

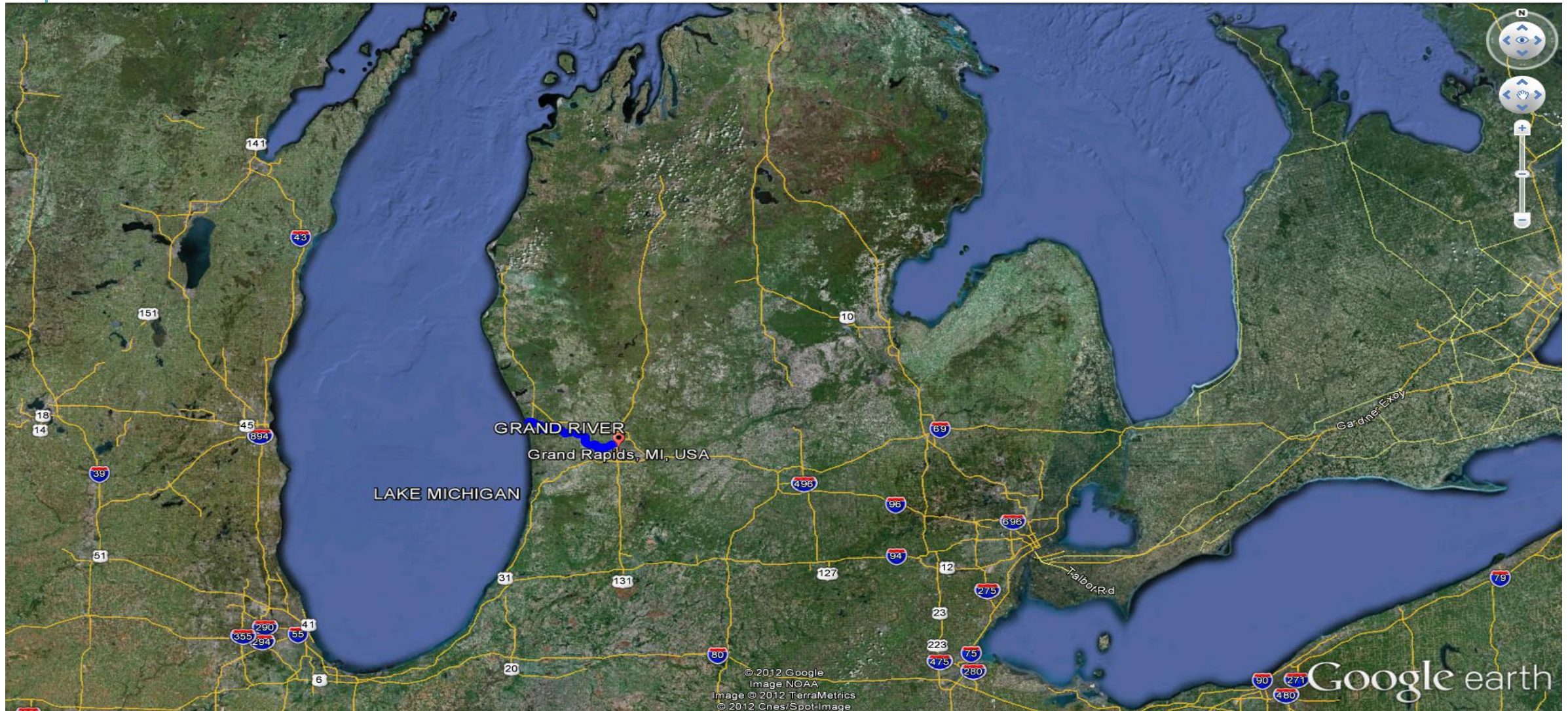


GRAND RAPIDS RESTORATION

RETURNING THE RAPIDS TO THE GRAND

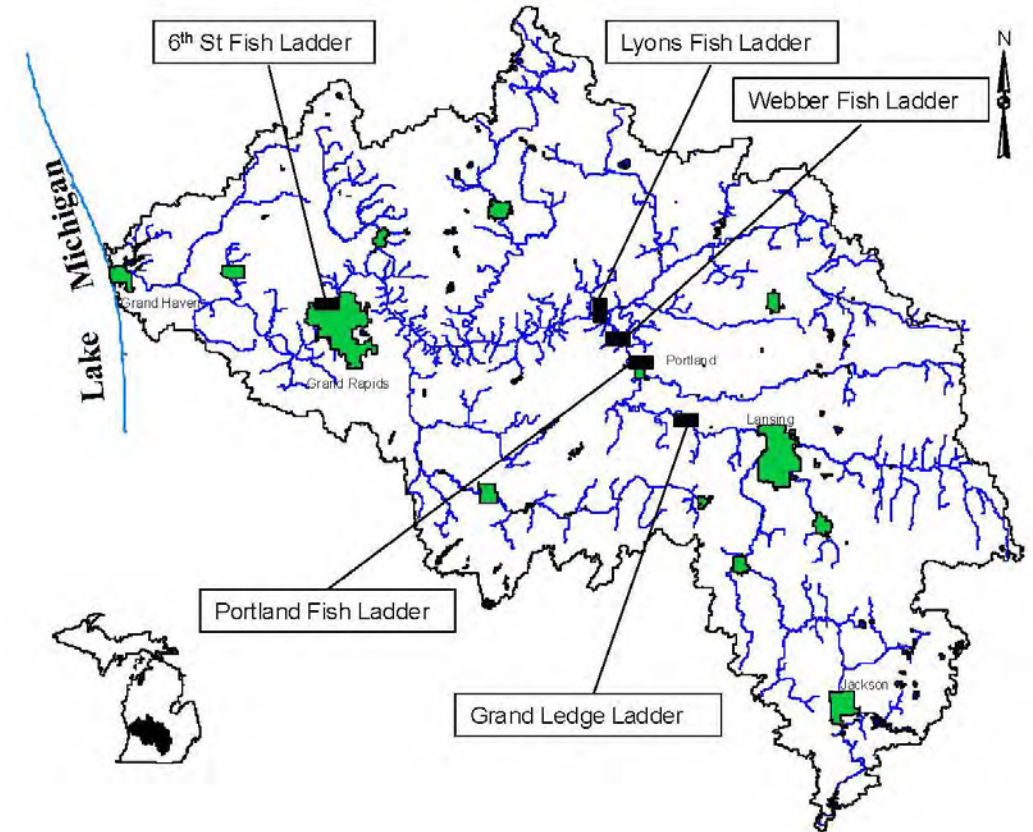
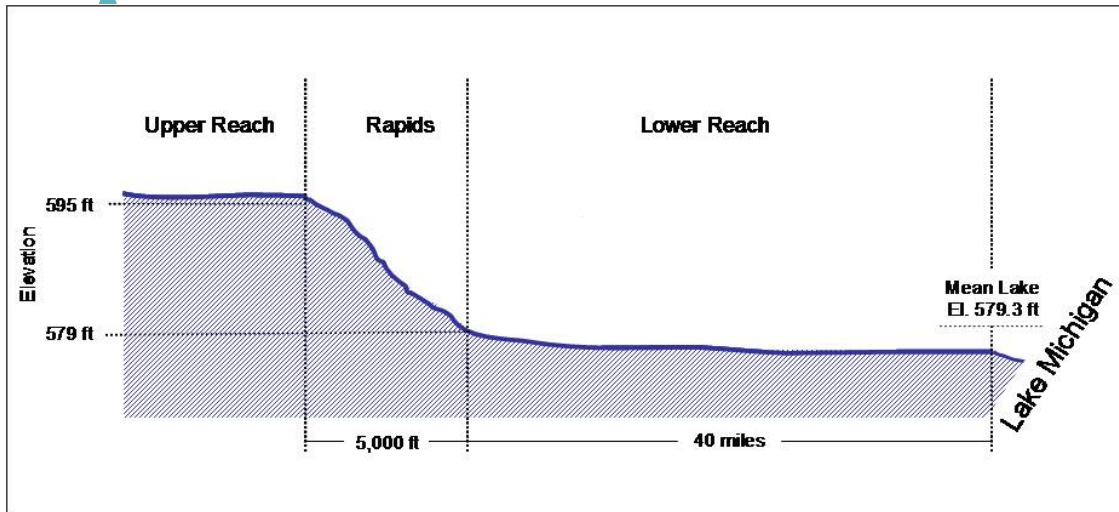
Chris Muller & Mark Van Putten, Co-Ambassadors



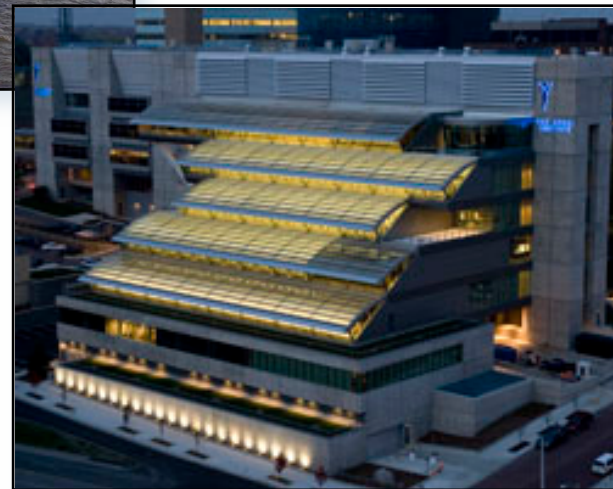


GRAND RIVER

- Longest river in Michigan
- First major barrier to upstream migration
- 17' drop as river passes through Grand Rapids



WHY IS THIS PLACE CALLED GRAND RAPIDS?



Why This Place is Called Grand Rapids

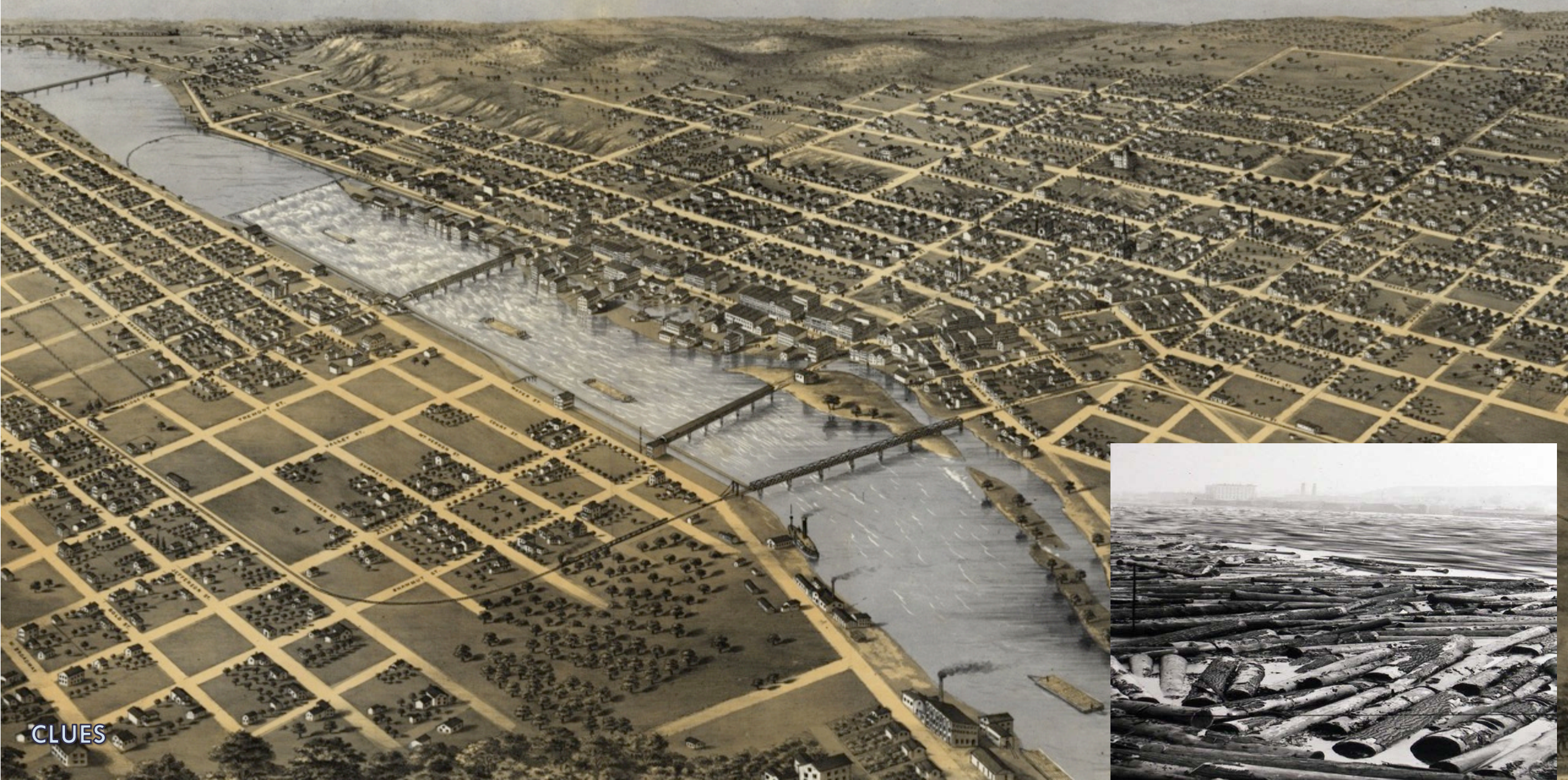
Many people living in Grand Rapids have given little thought to the origin of the name of their home city. There is nothing in the present aspect of the river itself to suggest any rapids, to say nothing of any grand rapids. In the very early days the river presented a much different aspect than it does now. Then there were some very grand rapids—rushing waters that extended from near Sixth Street to Wealthy Street. To give one an idea of the great decline or fall in the river bed, we have only to compare it with the rapids at Sault Ste. Marie.

The Soo Rapids have a fall of 20.6 feet in approximately three miles, and the rushing waters near the International Bridge are a source of interest to the many visitors that go to that part of Michigan.

The fall in the river bed at Grand Rapids from Sixth Street to Wealthy Street is 17.4 feet, or only an approximate of four feet less than the fall that covers three miles and more at Sault Ste. Marie.

This sharp fall or decline in the river bed at Grand Rapids is disguised because of the power canals on each side of the river which take up the water and carry it through many factories and out through numerous tail races, so that the name "Grand Rapids" is not suggested any more by the present appearance of the river.

1868



CLUES

THE GRAND RIVER TODAY



GREEN GRAND RAPIDS

Community driven process resulting in update to City Master Plan in 2012:

“Focus on the importance of green infrastructure, sustainability and quality of life in maintaining the city’s livability and competitive edge.”

“As Grand Rapids’ most significant natural asset, the Grand River can and should play an increasingly important role in enhancing the city’s quality of life

“We will recreate the rapids in the river as a reminder of our heritage.”





WBUR
Cohasset, ME
Co. H. Press 9/16/12 Front Page



Keith Winn, of Catalyst Partners, left, and Chris Muller, of M Retail Solutions, stand at 502 Second Street NW. The building has won the highest LEED rating in the world.

Little building gets world's highest LEED rating

West Side office has all the latest in energy-efficient engineering

BY JIM HARGER
HARGER@MIVE.COM

istry

ermakers opened on the present spids Press cat school her the city 0. that point first bottle only there it de. "You sit low, nobody dnce the guy pitched it." gnature piece lection of anes, is on dis- two months as (Rapids Public nk You, Beer!" rinally opened nd.

SEE REER, A8

GRAND RAPIDS — OF all the energy-efficient and LEED-certified buildings in the world, a little brick office building at 502 Second Street NW stands as the LEED champ.

The owners of Catalyst Partners and M Retail Solutions said Monday their 95-year-old office building has earned a LEED Platinum certification from the U.S. Green Building Council, with 66 of 69 points awarded.

It's the most points to date of any project in the world under the "LEED for New Construction v2.2 Rating System," according to Catalyst Partners President Keith Winn and M Retail Solutions President Chris Muller.

"The cool part is that this

little building can achieve such a distinction," said Muller, sitting in a roomy conference area that once housed a tool and die shop and before that, a flour mill.

"Grand Rapids was known to have the highest number of LEED-certified projects per capita, and now we have the honor of having the project with the highest number of LEED points in the world within our city limits," said Mayor George Heartwell, in a news release.

"This LEED Platinum project, located in the city's West Side neighborhood, will continue to serve as a catalyst for sustainable and restorative development in Grand Rapids and the West Michigan area for many years to come," Heartwell said.

Built 95 years ago as a "fire-proof" building for the Watkins Higgins Milling Co., the structure now is chock full of the latest in energy-efficient engineering while retaining a cool, loft-style ambiance.

It features a state-of-the-art geothermal heating and cooling system, solar panels on the roof and re-purposed materials that

SEE LEED, A2

PROJECT GOALS

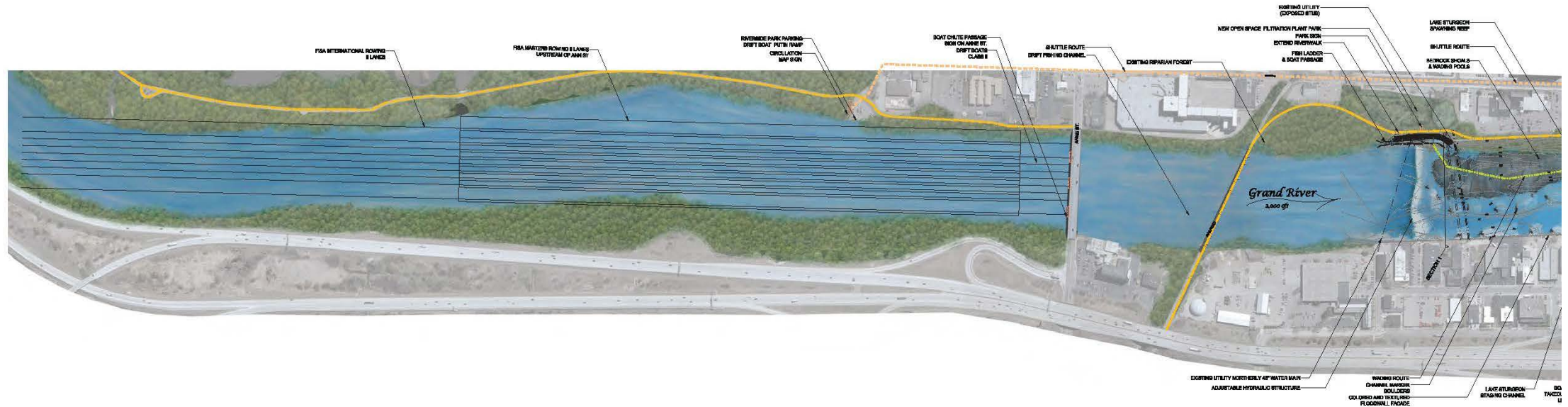
- Restore the rapids to the Grand River for everyone, with enhanced access and recreational opportunities
- Improve habitat and connectivity, water quality, riparian functions and aesthetics
- Create economic opportunities, enhance underserved communities and instill stewardship ethic





MULTIPLE BENEFITS

CONCEPT PLAN (UPPER REACH)



← IMPROVE THE ROWING POOL

MASTER PLAN



STRENGTH IN DIVERSITY

ECONOMIC IMPACT STUDY

- Ecological, economic, recreational, and community benefits
- Expanded recreational use estimates net new economic impact estimated at \$15.9 M to \$19.1 M per year
- Includes recreational activity such as kayaking, fly-fishing, rafting, SUP and other forms of water and riverfront recreation
- Improved riverfront property utilization and taxable values could increase by \$117.7 M
- Additional economic benefits to be identified through GR Forward process





RIVER RESTORATION STEERING COMMITTEE

Co-Chairs:

Fred Keller, CEO, Cascade Engineering

Joe Jones, President, Grand Rapids Urban League



PURPOSE

- Development of Guiding Principles
- Guide efforts associated with the restoration of the Grand River and riverbank development
- Ensure effective communication between studies, plans, projects and initiatives related to the Grand River
- Cultivate widespread support from key public and private sectors for a comprehensive river restoration vision that includes diverse community interests
- Encourage coordination of fundraising through federal and state grants and private funding
- Explore potential organizational models for long-term management and programming

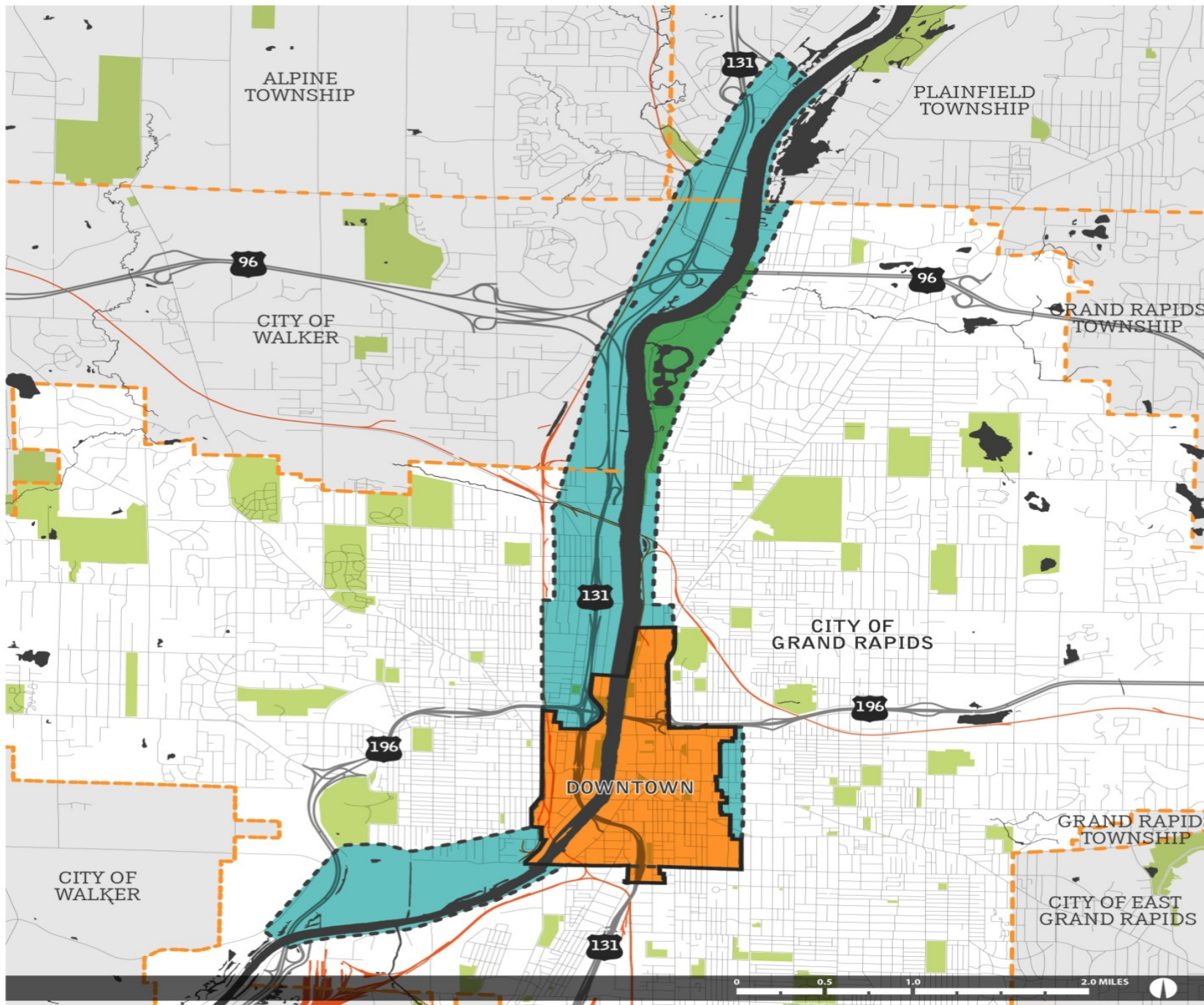
GUIDING PRINCIPLES

- Recognize that the Grand River belongs to everyone and contributes to our quality of life
- The Grand River as it flows through Grand Rapids is part of a watershed that has regional implications
- Every action should improve the ecological condition of the watershed and be an exemplar for others
- Seek to balance human interaction, commercial investment, and environmental considerations
- Consider future generations by ensuring that actions are sustainably designed, well-managed, responsibly assessed, continuously evaluated, and corrective action taken as necessary
- Preserve and restore habitat for desirable species and deter invasive species

GUIDING PRINCIPLES (CONT'D)

- Direct and develop the capacity and resources (people, organizations, and finances) necessary to enhance all human and natural habitats
- Encourage innovation, the leveraging of resources, and shared accountability by engaging residents, businesses, government, education, philanthropy, and non-governmental organizations
- Celebrate our history and cultural diversity
- Ensure that future development of the river and its edges contributes to the local economy by creating wide-ranging investment, recreation, and employment opportunities for all
- Develop the programming of places and activities to be accessible and safe for everyone; being mindful of social and/or physical barriers
- Use intentionally inclusive and transparent decision-making to foster ownership of a re-imagined Grand River watershed that serves as a beacon for civic identity

CONTEXT MAP



- RAIL
- HIGHWAY
- STREETS
- CITY / TOWN BORDER
- RIVER STUDY AREA
- DOWNTOWN STUDY AREA

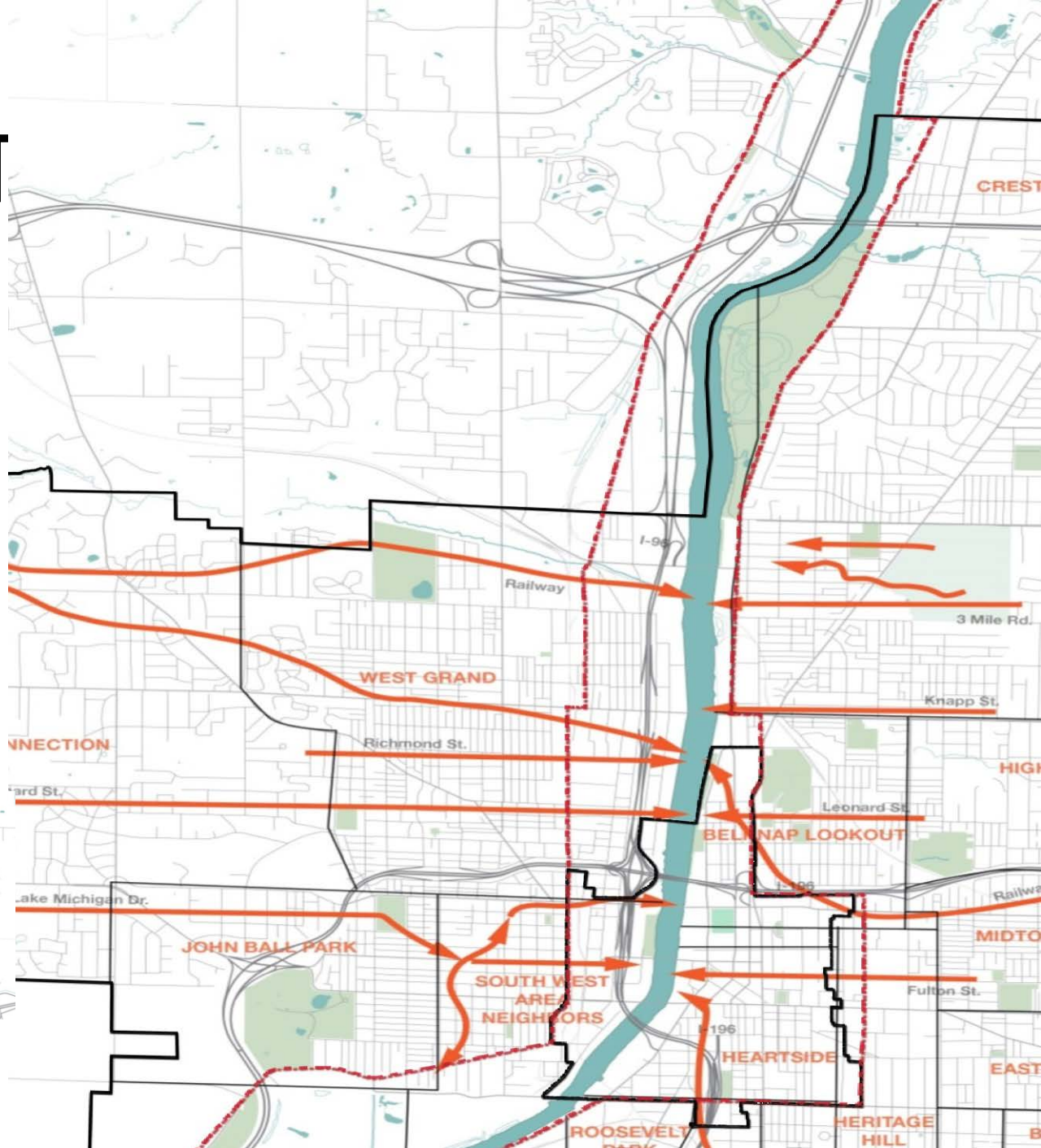
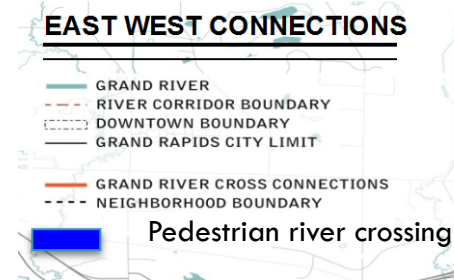
RIVER CORRIDOR PLAN COMMITTEE ROLE

- Ensure effective coordination related to the riverbanks, which will complement the downtown and river restoration
- Provide a regular public forum for information exchange
- Cultivate widespread support for a comprehensive riverbank vision
- Encourage communication and alignment on a shared riverbank and river restoration vision.
- Provide recommendations for implementation.



CREATE CONNECTIONS BETWEEN NEIGHBORHOODS

- Improve access to the river.
- Improve access to parks.
- Improve access between east and west sides of the river.
- Only two pedestrian-only crossings of the river.
- Increase access to parks and the river, specifically on the west side where lacking.



PUBLIC OUTREACH STRATEGIES

- GR Forward Open House
- Hosting events
- Surveys
- Conducting focus groups
- Speaker Series
- Social Media
- Interactive mapping
- Meeting with neighborhoods, business associations, regional partners, and many more!



Downtown Committee

- Public participation strategies
- Ensure comprehensive stakeholder engagement
- Participate in developing plan recommendations that will contribute to project deliverables.

SUPPORTING STAFF: DGRI, GRForward Consultants

River Corridor Committee

- Public participation strategies
- Ensure comprehensive stakeholder engagement
- Participate in developing plan recommendations that will contribute to project deliverables.

SUPPORTING STAFF: Planning Department, GRForward Consultants

River Restoration Committee

- Explore potential organizational models and processes for the long-term operation, management and programming of river improvements
- Cultivate and inspire widespread participation and support of the project
- Advocate for resources on the Local, Federal, State and Regional levels

SUPPORTING STAFF: Planning Department, GRWW River Restoration Org.



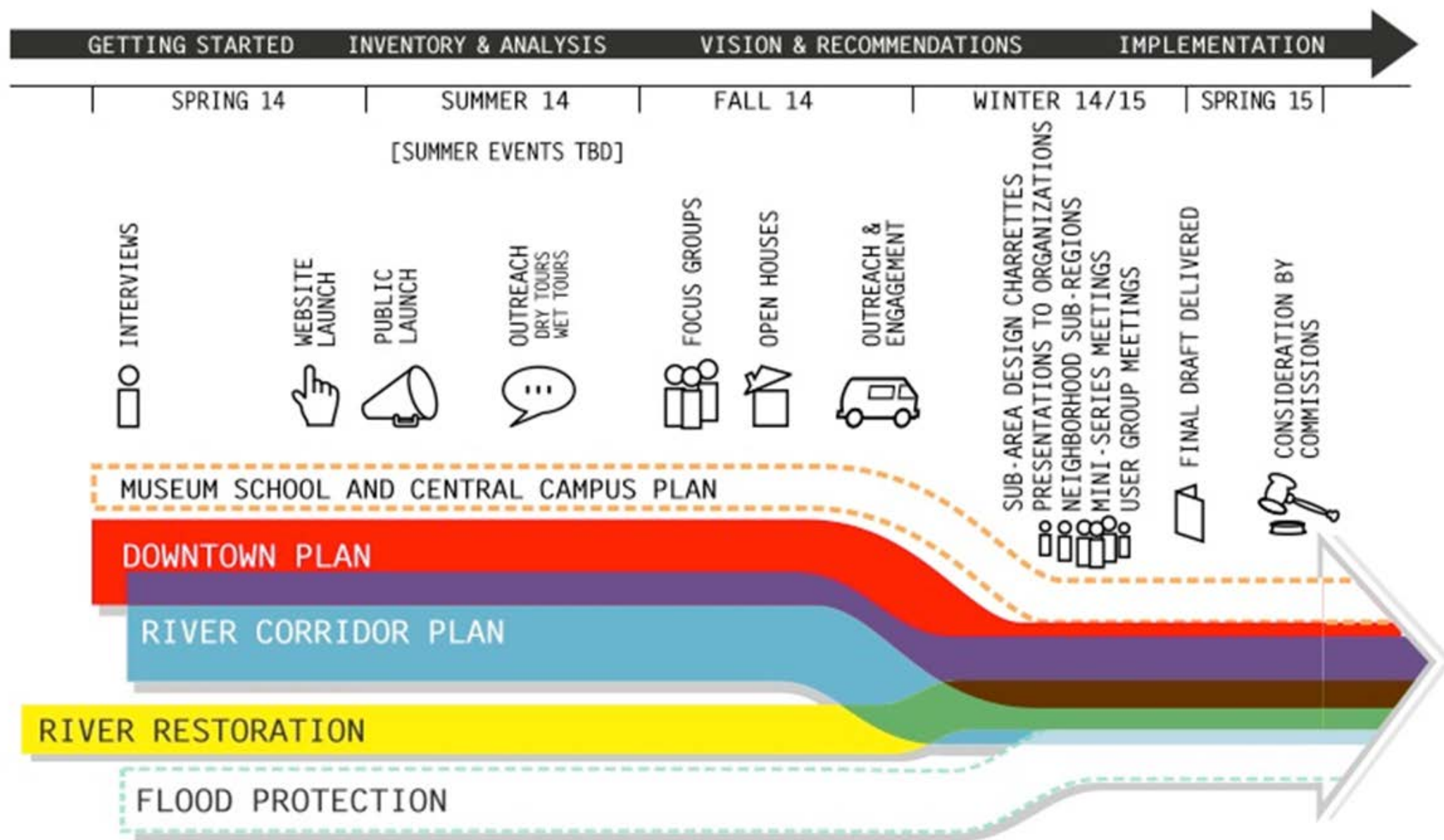
DOWNTOWN AND RIVER PROCESS DIAGRAM (DRAFT)

PLANNING COMMISSION

- Public hearings
- Plan review
- Make recommendations to the City Commission

GRAND RAPIDS CITY COMMISSION

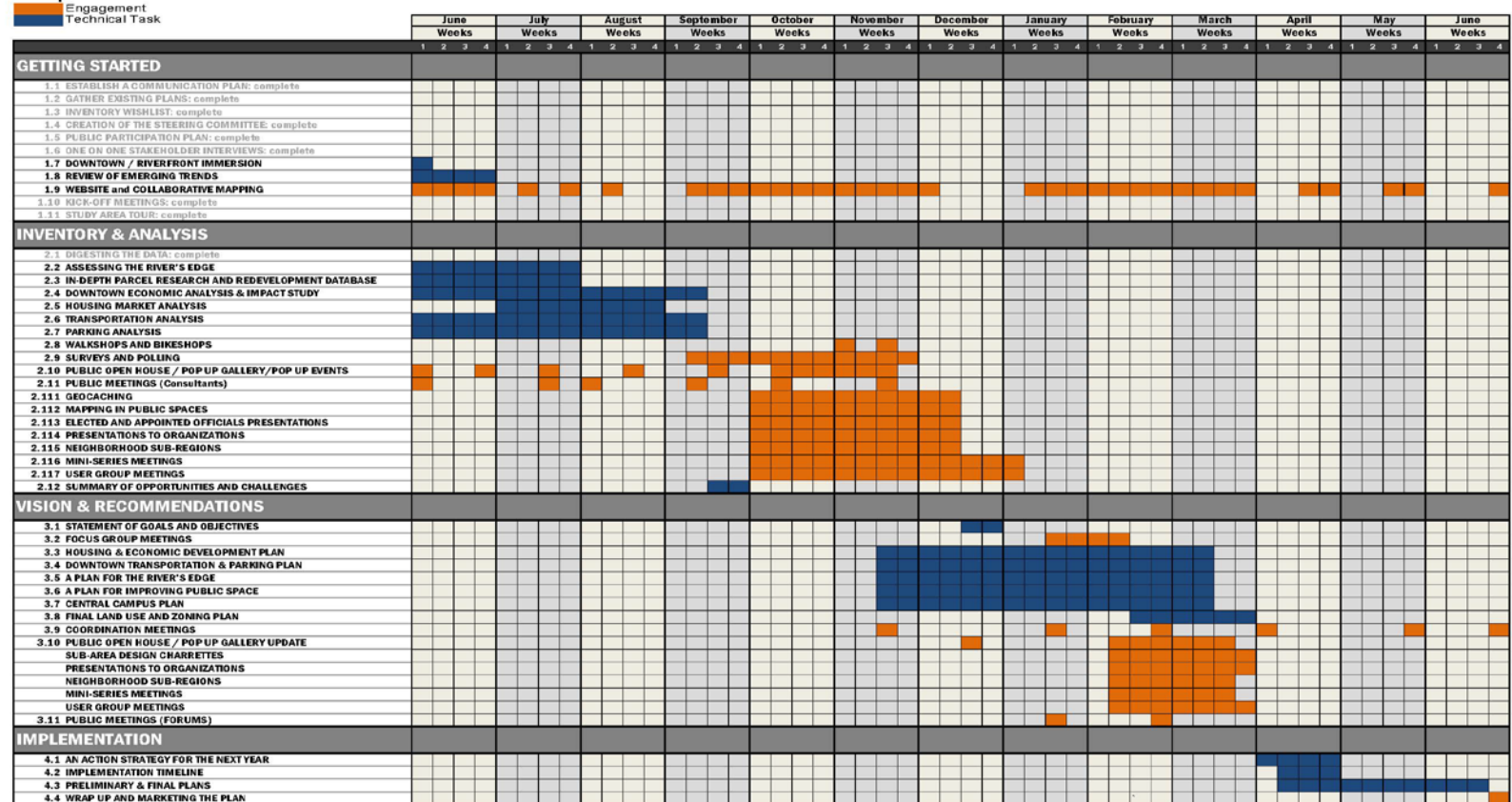
- Public hearings
- Final plan adoption
- Final permit application approval



SCHEDULE AND COORDINATION

- Permits Submission - Summer 2015
 - Resource Agency Coordination
 - Engineering Design
- Community and Steering Committee Coordination- ongoing
- River Corridor Steering Committee Plan Expected- Spring 2015
- Long Term Management Plan - Spring 2015
- Fundraising- ongoing

Proposed Work Schedule



FOLLOW-UP UWFP CONTACTS

Urban Waters DOI Co-Leads	Urban Waters USDA Co-Leads	Urban Waters Ambassador
Scott Hicks , Field Supervisor East Lansing Field Office Fish and Wildlife Service Scott_hicks@fws.gov	Kristian Williams , Resource Conservationist Natural Resources Conservation Service kristian.williams@mi.usda.gov	Chris Muller Grand Rapids Whitewater Chris@mretail.com
Mark Holey , Project Leader Green Bay Fish and Wildlife Conservation Office Fish and Wildlife Service mark_holey@fws.gov	Gary Lee , State Conservationist Natural Resources Conservation Service 517-324-5277 gary.lee@mi.usda.gov	Mark Van Putten Wege Foundation mvp@conservationstrategy.com