

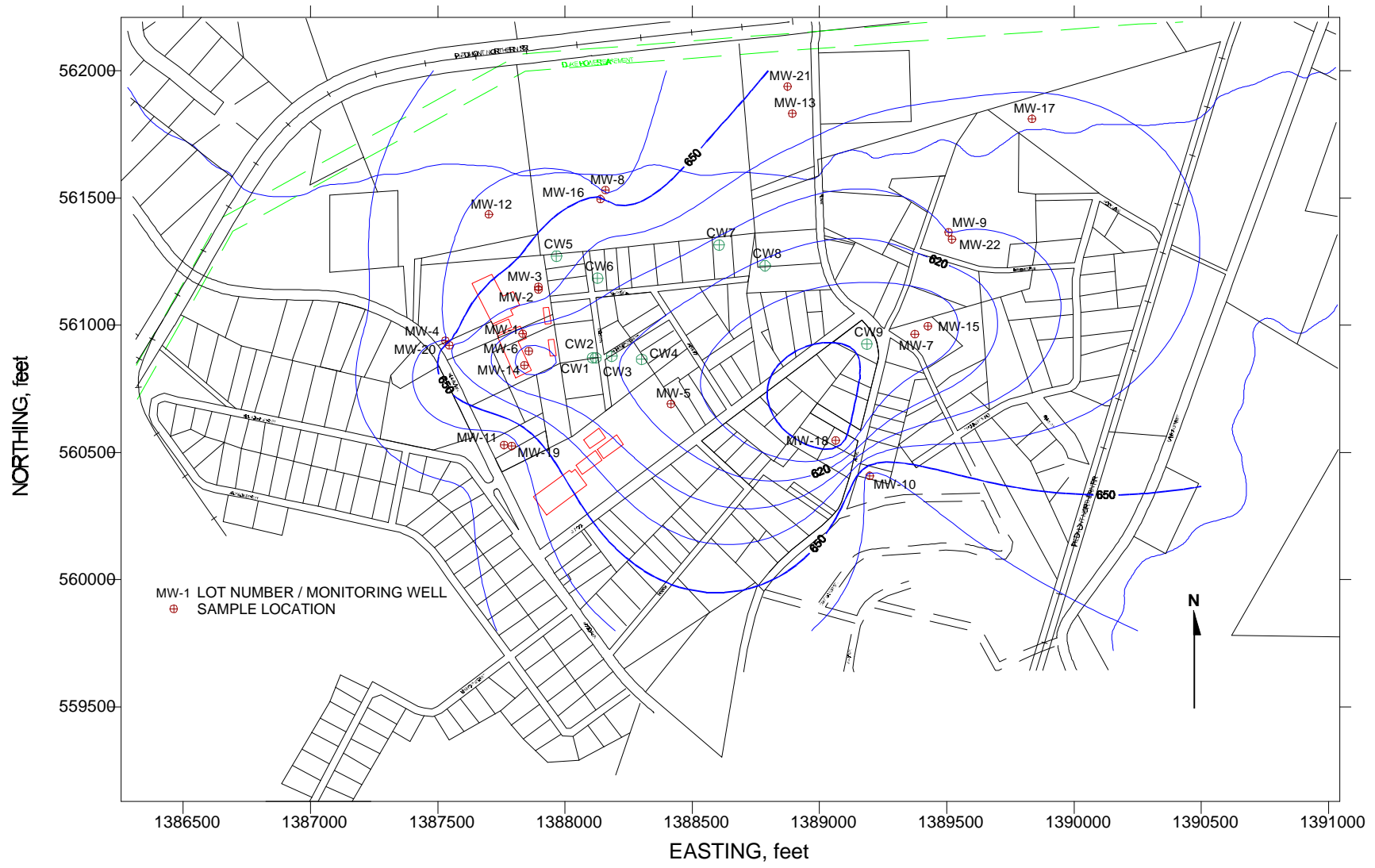
FILE: N:\04400\02\04400-14.DWG

SOURCE: FIELD INVESTIGATION REPORT, NORTH BELMONT PCE SUPERFUND SITE, GASTON COUNTY, BELMONT, NORTH CAROLINA, ROY F. WESTON, INC., FEBRUARY 1997.



FIGURE 3-6
GEOLOGIC CROSS SECTION C-C', AUG 1996
REMEDIAL INVESTIGATION REPORT
NORTH BELMONT PCE SUPERFUND SITE
NORTH BELMONT, GASTON COUNTY, NC
SESD PROJECT No. 96S-058, JUNE 1997

D:\RIF-36.DWG

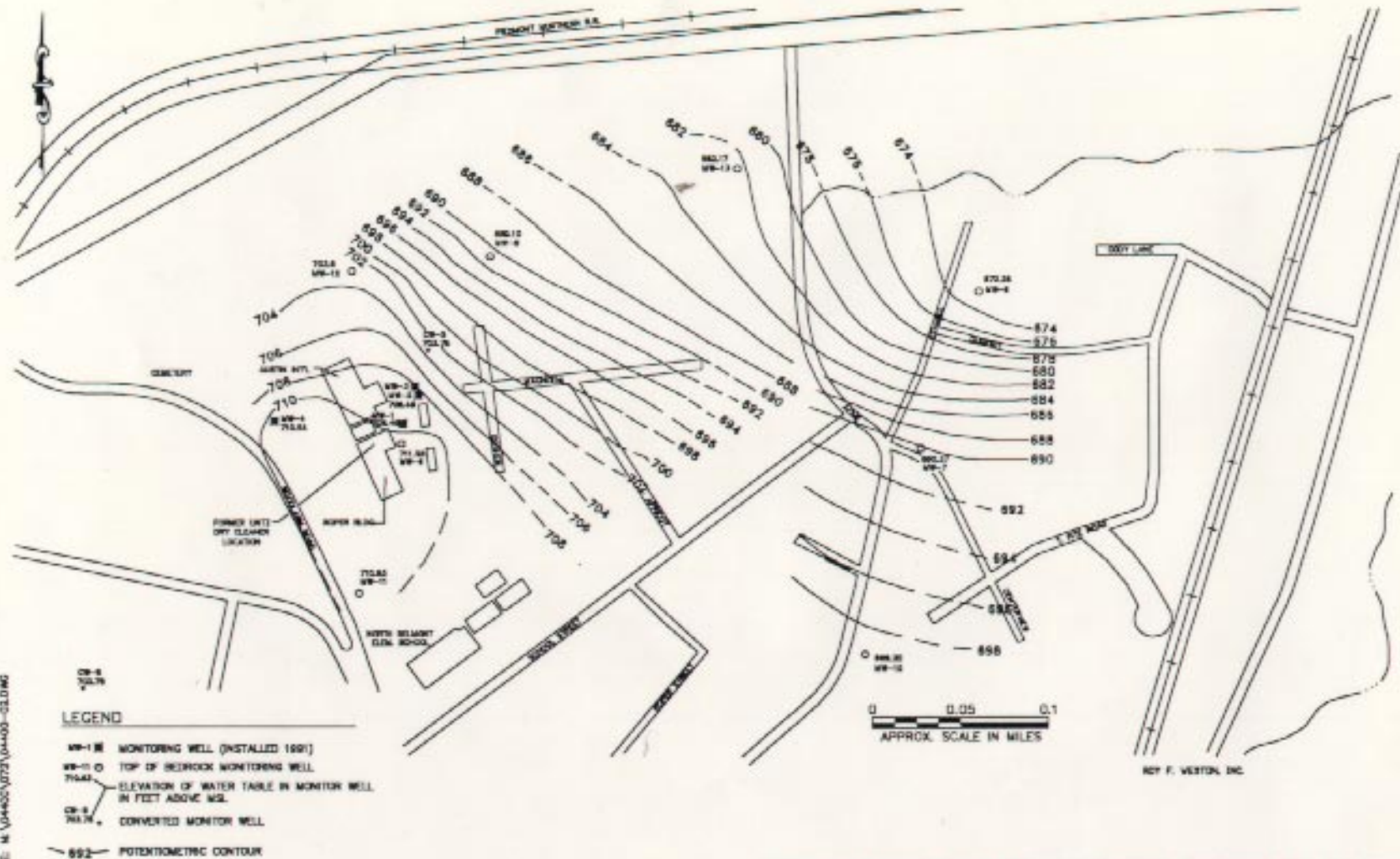


DGR1937.CDR

FIGURE 3-7 TOP OF BEDROCK CONTOURS, AUGUST 1996
 REMEDIAL INVESTIGATION REPORT
 NORTH BELMONT PCE SUPERFUND SITE
 NORTH BELMONT, GASTON COUNTY, NC
 SESD PROJECT No. 96S-058, JUNE 1997

NOT TO SCALE





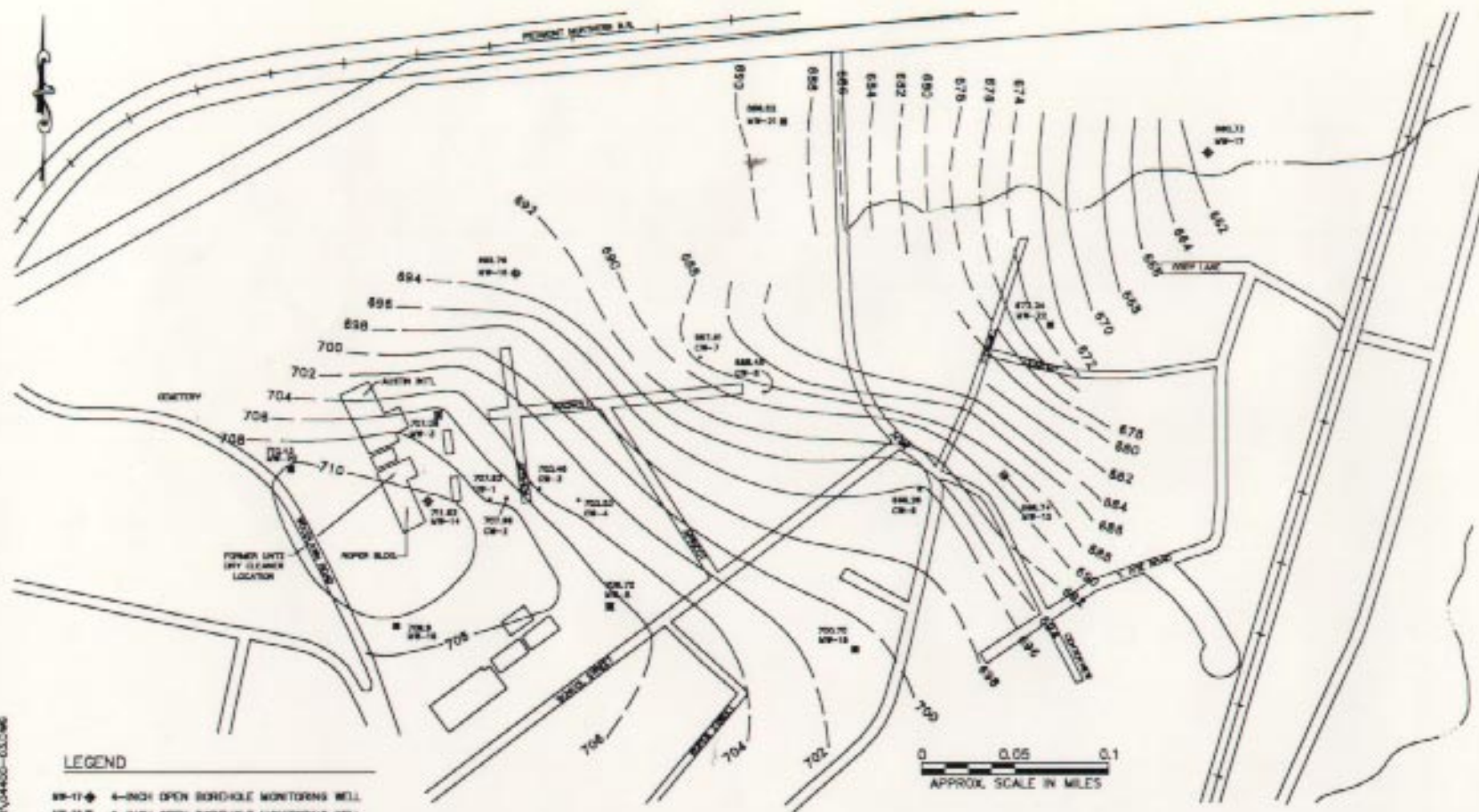
ROY F. WESTON, INC.

SOURCE: FIELD INVESTIGATION REPORT, NORTH BELMONT PCE SUPERFUND SITE, GASTON COUNTY, BELMONT, NORTH CAROLINA, ROY F. WESTON, INC., FEBRUARY 1997.



FIGURE 3-8
 SAPROLITE AQUIFER, POTENTIOMETRIC MAP
 OCTOBER 1996
 REMEDIAL INVESTIGATION REPORT
 NORTH BELMONT PCE SUPERFUND SITE
 NORTH BELMONT, GASTON COUNTY, NC
 SESD PROJECT No. 96S-058, JUNE 1997

FILE: N:\64480\373\0480-03.DWG



LEGEND

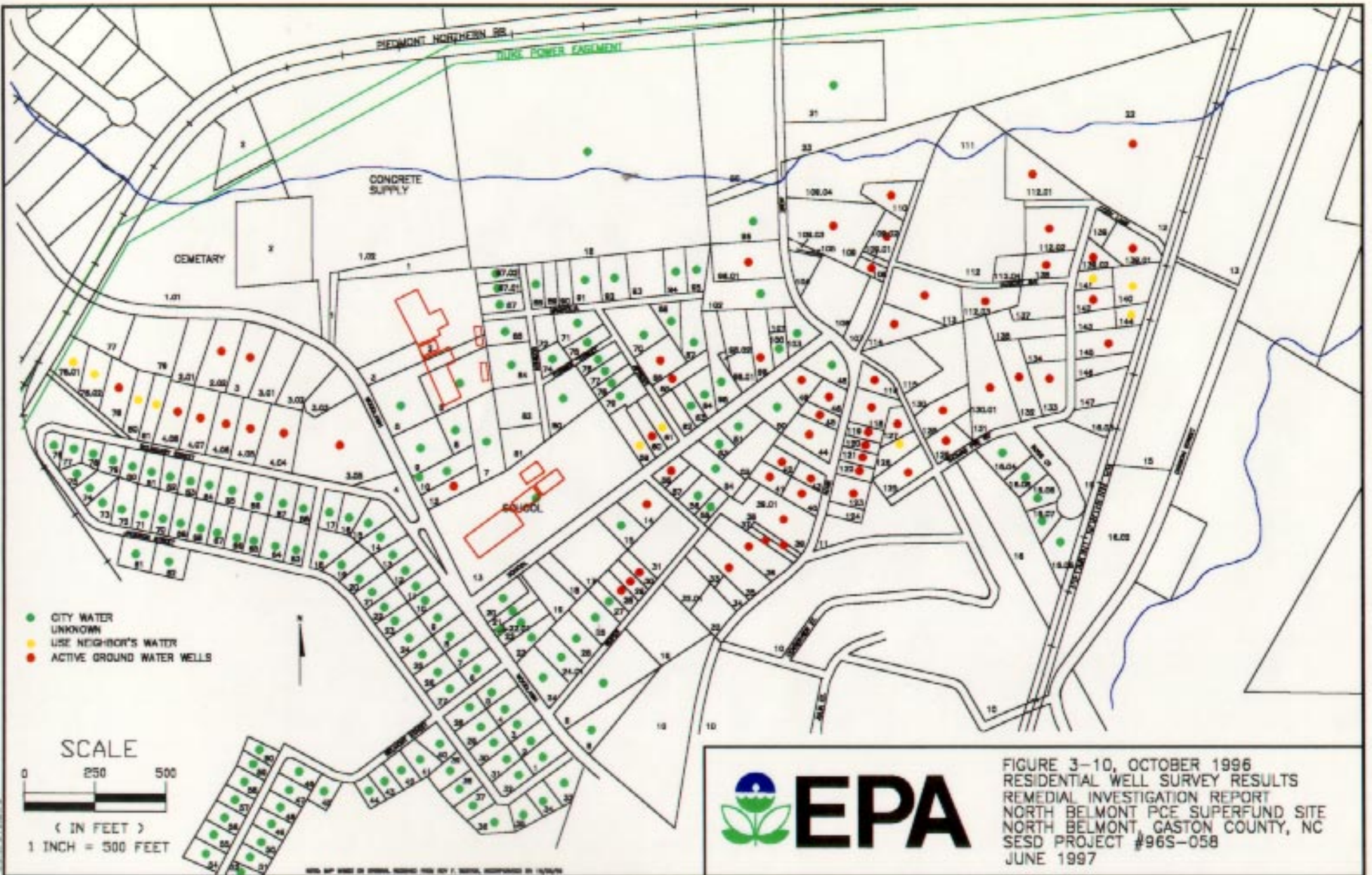
- MW-11 4-INCH OPEN BORED-HOLE MONITORING WELL
- MW-14 5-INCH OPEN BORED-HOLE MONITORING WELL
- MW-15 ELEVATION OF WATER TABLE IN MONITOR WELL IN FEET ABOVE MSL
- MW-16
- MW-17
- MW-18
- MW-19
- MW-20
- MW-21
- MW-22
- MW-23
- MW-24
- MW-25
- MW-26
- MW-27
- MW-28
- MW-29
- MW-30
- MW-31
- MW-32
- MW-33
- MW-34
- MW-35
- MW-36
- MW-37
- MW-38
- MW-39
- MW-40
- MW-41
- MW-42
- MW-43
- MW-44
- MW-45
- MW-46
- MW-47
- MW-48
- MW-49
- MW-50
- MW-51
- MW-52
- MW-53
- MW-54
- MW-55
- MW-56
- MW-57
- MW-58
- MW-59
- MW-60
- MW-61
- MW-62
- MW-63
- MW-64
- MW-65
- MW-66
- MW-67
- MW-68
- MW-69
- MW-70
- MW-71
- MW-72
- MW-73
- MW-74
- MW-75
- MW-76
- MW-77
- MW-78
- MW-79
- MW-80
- MW-81
- MW-82
- MW-83
- MW-84
- MW-85
- MW-86
- MW-87
- MW-88
- MW-89
- MW-90
- MW-91
- MW-92
- MW-93
- MW-94
- MW-95
- MW-96
- MW-97
- MW-98
- MW-99
- MW-100
- 708 POTENTIOMETRIC CONTOUR



SOURCE: FIELD INVESTIGATION REPORT, NORTH BELMONT PCE SUPERFUND SITE, GASTON COUNTY, BELMONT, NORTH CAROLINA, NOV. F. WESTON, INC., FEBRUARY 1997.



FIGURE 3-9
OCTOBER 1996
BEDROCK AQUIFER, POTENTIOMETRIC MAP
REMEDIAL INVESTIGATION REPORT
NORTH BELMONT PCE SUPERFUND SITE
NORTH BELMONT, GASTON COUNTY, NC
SESD PROJECT No. 96S-05B, JUNE 1997



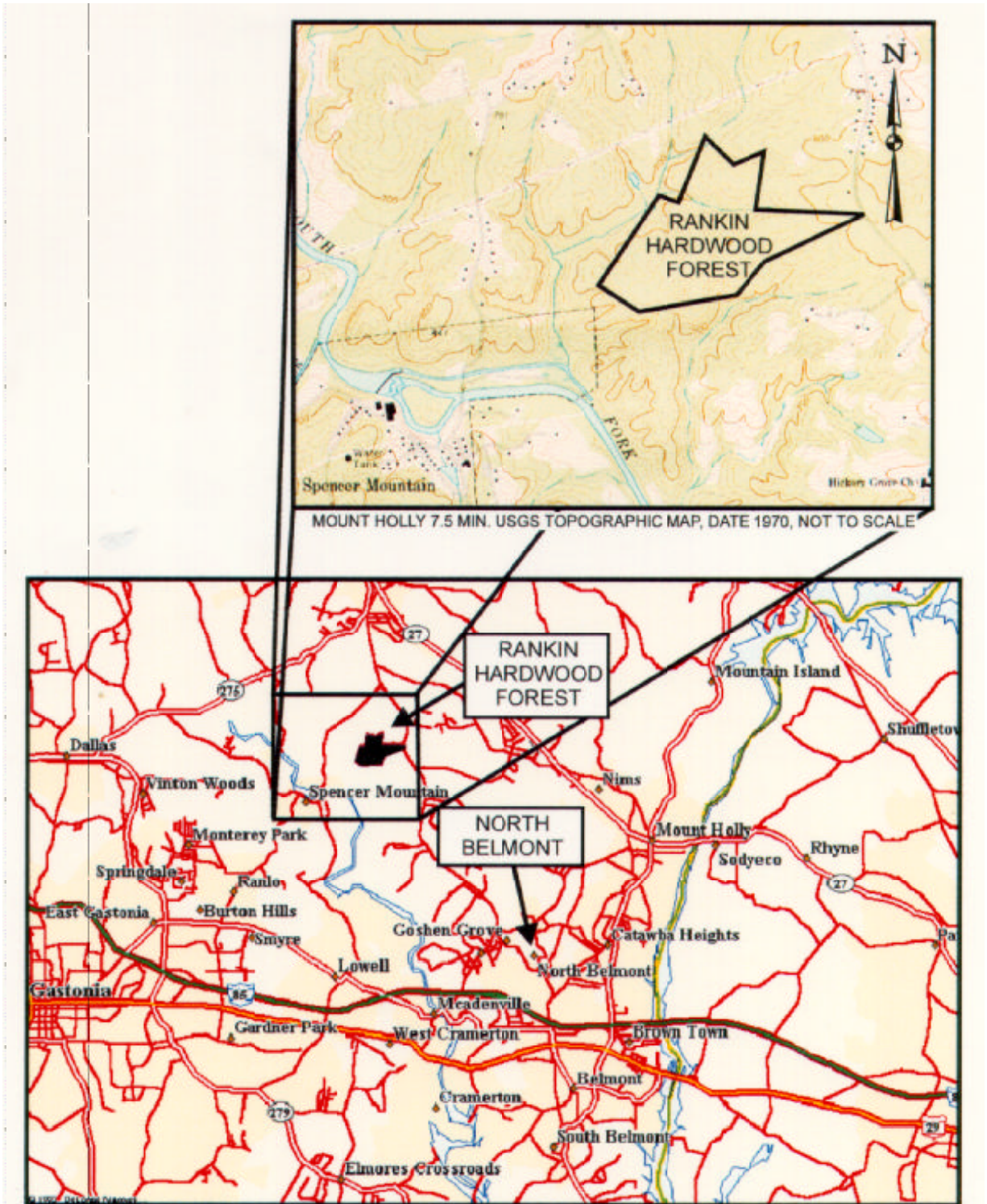
- CITY WATER UNKNOWN
- USE NEIGHBOR'S WATER
- ACTIVE GROUND WATER WELLS

SCALE
 0 250 500
 (IN FEET)
 1 INCH = 300 FEET



FIGURE 3-10, OCTOBER 1996
 RESIDENTIAL WELL SURVEY RESULTS
 REMEDIAL INVESTIGATION REPORT
 NORTH BELMONT PCE SUPERFUND SITE
 NORTH BELMONT, GASTON COUNTY, NC
 SESD PROJECT #96S-058
 JUNE 1997

MAP NOT MADE TO SCALE. DISTANCES MAY VARY. DISTANCES SHOWN ON THIS MAP ARE APPROXIMATE.



SOURCE: DeLORME MAP EXPERT

FIGURE 3-11 LOCATION OF RANKIN HARDWOOD FOREST
 REMEDIAL INVESTIGATION REPORT
 NORTH BELMONT PCE SUPERFUND SITE
 NORTH BELMONT, GASTON COUNTY, NC
 SESD PROJECT No. 96S-058, JUNE 1997



DGRIF311.CDR