



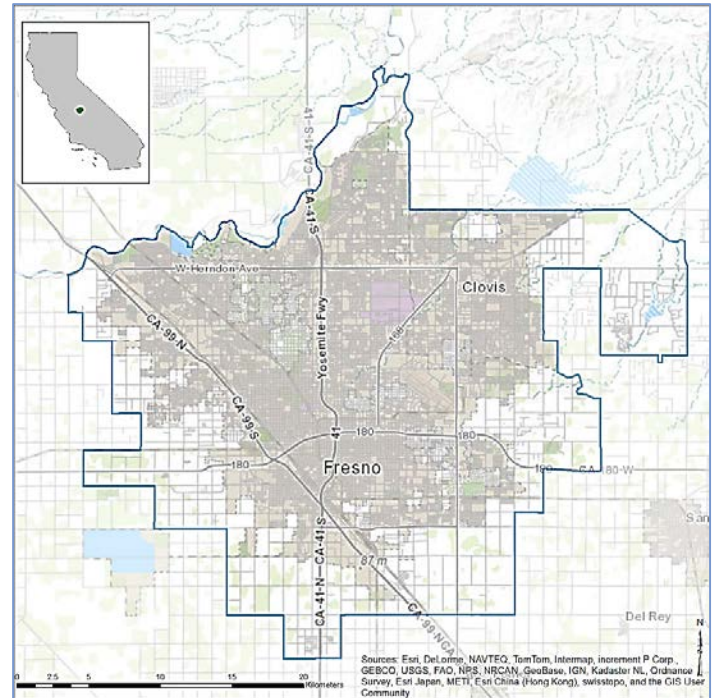
Fresno, CA and surrounding area

Towns and cities rely on clean air, clean water, green space, and other natural amenities for economic sustainability and quality of life, yet their benefits are not always fully understood or considered in local decisions. EPA and its partners are producing EnviroAtlas to help communities better use environmental assets for public good.

EnviroAtlas includes an online interactive mapping application that anyone can use. The interactive map contains over 200 maps available for the U.S., as well as 100+ fine-scale maps for selected U.S. communities about existing and potential benefits from the local natural environment. The EnviroAtlas community component is based on 1-meter resolution land cover data. Information derived from these data is summarized by census block groups; more spatially explicit map layers are also provided. This fact sheet highlights some of the many community data layers available for the featured area of Fresno, California.

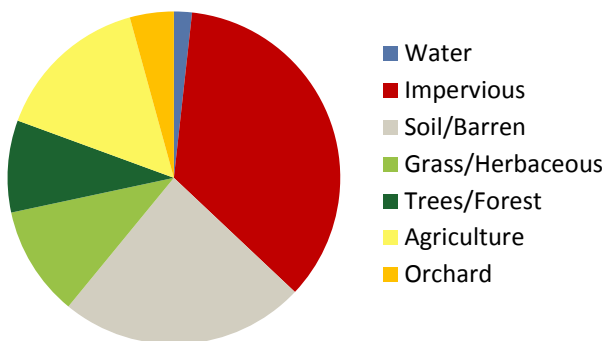
Background

The Fresno, California area was chosen as an EnviroAtlas community because it offers several opportunities to leverage existing research and community engagement activities. It has also received poor air quality ratings that can be evaluated from a green infrastructure perspective. The EnviroAtlas boundary for the Fresno, California area was determined using the 2010 Census definition of an Urban Area. It includes the greater Fresno area, as well as Clovis and other portions of Fresno County. The area measures 597 square kilometers, and encompasses 405 census block groups.



The Fresno, California area is in the Central California Valley ecoregion. It has a mild mid-latitude climate with long, hot, dry summers and slightly wet winters. The region was once vegetated with extensive grasslands but has mostly been converted into agriculture with some urban and suburban development. The leading industries in the area are agriculture and healthcare. Community and Saint Agnes Medical Centers, the City of Fresno, and Kaiser Permanente are among largest employers in the area. The demographics of the Fresno community area indicate that the potential exists for income and other disparities in the distribution of environmental assets. EnviroAtlas includes demographic maps that can help screen for potential health and well-being disparities resulting from disproportionate

Percent Land Cover in Community Area



Fresno Area Demographics
2010 Census

| | |
|-------------------------------|---------|
| Total population | 659,628 |
| Under 13 years old | 21.05% |
| Over 70 years of age | 7.15% |
| Other than white/non-Hispanic | 64.33% |
| Below twice the poverty level | 44.47% |

distribution of “green infrastructure.”

Ecosystem Services Overview

In EnviroAtlas, the benefits humans receive from nature are grouped into seven categories that demonstrate the interconnectedness of these ecosystem services:

- Clean air
- Clean and plentiful water
- Natural hazard mitigation
- Climate stabilization
- Recreation, culture, and aesthetics
- Biodiversity conservation
- Food, fuel, and materials (data available only for communities with farm land)

Examples of some of the data included in EnviroAtlas are detailed below:

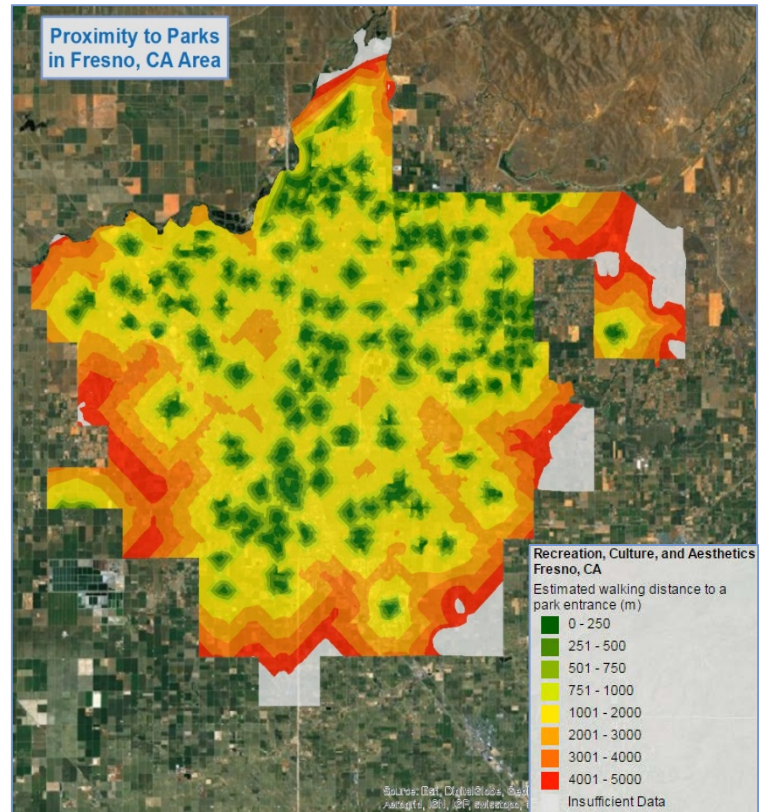
Access to Parks

Parks provide access to green space, encourage physical activity, and improve the livability and aesthetics of urban areas. Those who live closer to parks may be more likely to receive multiple benefits associated with this proximity.

- An estimated 14 percent of the Fresno area is located within easy walking distance (500 meters) of a park entrance (dark and medium green areas in figure at right).
- An estimated 6 percent of the Fresno area does not have a park entrance within 5 kilometers (grey areas in figure at right).

Stream and Lake Buffers

Natural land cover adjacent to streams and rivers, sometimes called the riparian area or zone, helps protect



water quality and supply for drinking, recreation, and aquatic habitat.

The EnviroAtlas community component analyzes stream and lake buffers in widths of 15 and 50 meters.

- An estimated 1.8 percent of Fresno’s land area is within 50 meters of a stream or lake.
- 14 percent of Fresno’s 50 meter stream and lake buffers are forested.
- 17 percent of Fresno’s 50 meter stream and lake buffers are impervious.

EnviroAtlas Tools and Features

- Learn more about and download EnviroAtlas data: <https://www.epa.gov/enviroatlas/enviroatlas-data>
- Search our data layers and access their fact sheets: <https://www.epa.gov/enviroatlas/enviroatlas-dynamic-data-matrix>
- Explore data for the Fresno community area in our interactive mapping application: <https://www.epa.gov/enviroatlas/enviroatlas-interactive-map>
- Use our Eco-Health Relationship Browser to explore ecosystems, the services they provide, and their benefits to human health and well-being: <https://www.epa.gov/enviroatlas/enviroatlas-eco-health-relationship-browser>
- Contact us with questions about EnviroAtlas: <https://www.epa.gov/enviroatlas/forms/contact-enviroatlas>

EnviroAtlas combines maps, graphs, and other analysis tools, fact sheets, and downloadable data into an easy-to-use, web-based educational and decision-support tool. EnviroAtlas helps users understand the connections between the benefits we derive from ecosystem services and the natural resources that provide them. For more information, please visit www.epa.gov/enviroatlas.