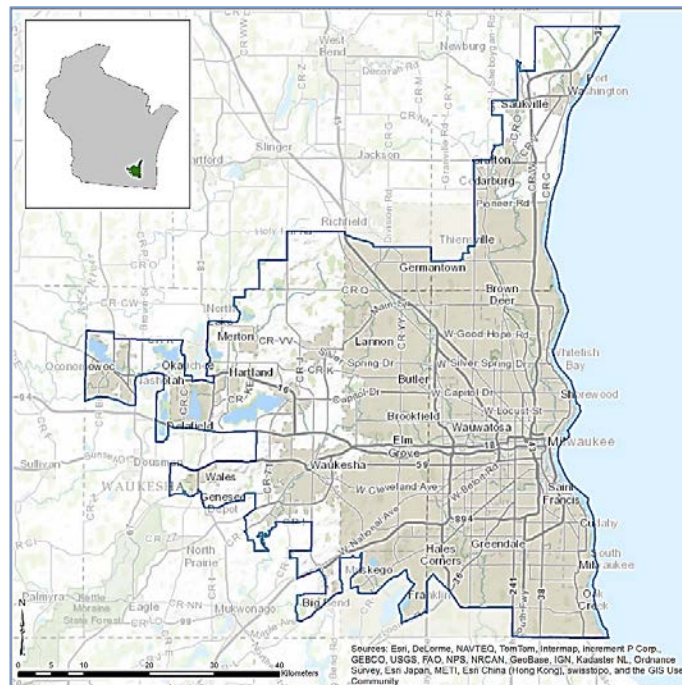




Milwaukee, WI and surrounding area

Towns and cities rely on clean air, clean water, green space, and other natural amenities for economic sustainability and quality of life, yet their benefits are not always fully understood or considered in local decisions. EPA and its partners are producing EnviroAtlas to help communities better use environmental assets for public good.

EnviroAtlas includes an online interactive mapping application that anyone can use. The interactive map contains over 200 maps available for the U.S., as well as 100+ fine-scale maps for selected U.S. communities about existing and potential benefits from the local natural environment. The EnviroAtlas community component is based on 1-meter resolution land cover data. Information derived from these data is summarized by census block groups; more spatially explicit map layers are also provided. This fact sheet highlights some of the many community data layers available for the featured area of Milwaukee, Wisconsin.



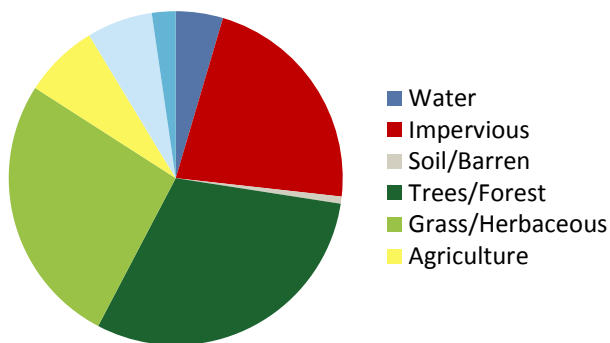
Background

The Milwaukee, Wisconsin area was chosen as an EnviroAtlas pilot community in order to contribute to the [Midwest Spatial Decision Support System](#). The EnviroAtlas boundary for the Milwaukee area was determined using the 2010 Census definition of an Urban Area. It includes the greater Milwaukee area, as well as portions of Waukesha, Washington, and Ozaukee counties. The area measures 1,799 square kilometers, and encompasses 1,175 census block groups.

The Milwaukee area is in the Southeastern Wisconsin Till

Plain ecoregion. It has a severe, humid continental climate with warm summers and harsh winters. The vegetation transitions from hardwood forests and oak savannahs to tall grass prairies; some of the area has been converted to agricultural use. The community has a very diverse economy with service, managerial, and healthcare as the largest industries. The largest employers include Aurora Health Care, Wheaton Franciscan Healthcare and Kohl's Department Stores. The demographics of the Milwaukee community area indicate that the potential exists for income and other disparities in the distribution of environmental assets. EnviroAtlas includes demographic maps that can help screen for potential health and well-being disparities resulting from disproportionate distribution of "green

Percent Land Cover in Community Area



Milwaukee Area Demographics
2010 Census

Total population	1,373,711
Under 13 years old	17.61%
Over 70 years of age	9.09%
Other than white/non-Hispanic	34.45%
Below twice the poverty level	30.31%

infrastructure.”

Ecosystem Services Overview

In EnviroAtlas, the benefits humans receive from nature are grouped into seven categories that demonstrate the interconnectedness of these ecosystem services:

- Clean air
- Clean and plentiful water
- Natural hazard mitigation
- Climate stabilization
- Recreation, culture, and aesthetics
- Biodiversity conservation
- Food, fuel, and materials (data available only for communities with farm land)

Examples of some of the data included in EnviroAtlas are detailed below:

Green Space and Trees

Research indicates that physical and visual access to trees and other green space has positive physiological, cognitive, and emotional benefits. In the Milwaukee community area:

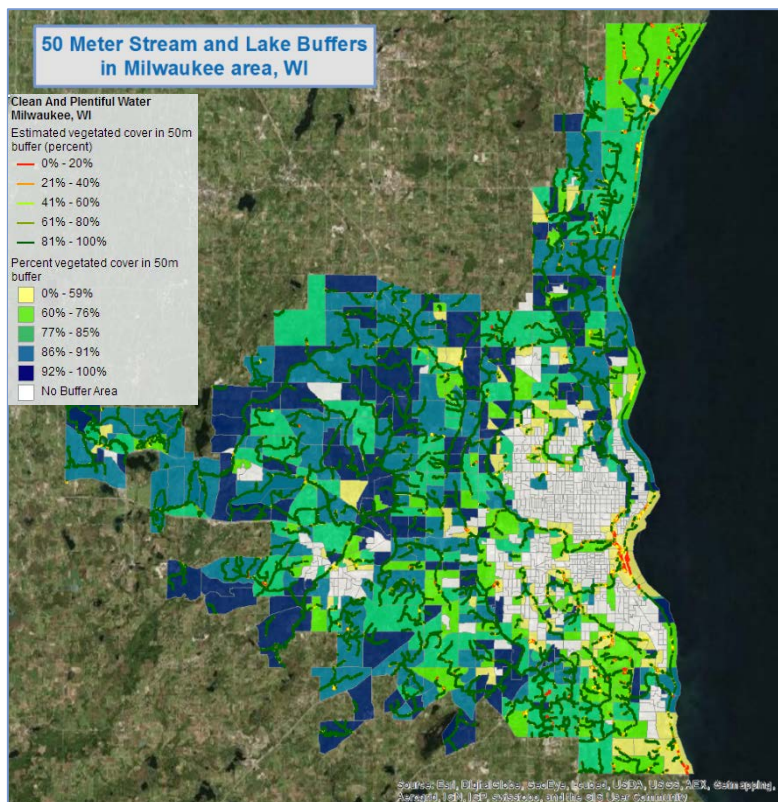
- There are 1,097 square meters of green space per person.
- 101 out of 716 K-12 Schools have less than 25% green space within 100 meters.
- There are 5,064,353 tons of carbon stored in the local tree biomass with an additional 148,176 tons sequestered annually.
- 2,220 kilograms of ozone are removed from the air by local tree canopy every year.

Stream and Lake Buffers

Natural land cover adjacent to streams and rivers,

EnviroAtlas Tools and Features

- Learn more about and download EnviroAtlas data: <https://www.epa.gov/enviroatlas/enviroatlas-data>
- Search our data layers and access their fact sheets: <https://www.epa.gov/enviroatlas/enviroatlas-dynamic-data-matrix>
- Explore data for the Milwaukee community area in our interactive mapping application:
- Use our Eco-Health Relationship Browser to explore ecosystems, the services they provide, and their benefits to human health and well-being: <https://www.epa.gov/enviroatlas/enviroatlas-eco-health-relationship-browser>
- Contact us with questions about EnviroAtlas: <https://www.epa.gov/enviroatlas/forms/contact-enviroatlas>



sometimes called the riparian area or zone, helps protect water quality and supply for drinking, recreation, and aquatic habitat. The EnviroAtlas community component analyzes stream and lake buffers with widths of 15 and 50 meters.

- An estimated 8.3% of Milwaukee’s land area is within 50 meters of a stream or lake.
- 83 percent of Milwaukee’s 50 meter stream and lake buffers are vegetated (shorelines indicated by red to green lines in the figure above).

EnviroAtlas combines maps, graphs, and other analysis tools, fact sheets, and downloadable data into an easy-to-use, web-based educational and decision-support tool. EnviroAtlas helps users understand the connections between the benefits we derive from ecosystem services and the natural resources that provide them. For more information, please visit www.epa.gov/enviroatlas.