



This PDF file is an excerpt from the EPA guidance document entitled *National Management Measures to Control Nonpoint Source Pollution from Urban Areas* (November 2005, EPA-841-B-05-004). The full guidance can be downloaded from <http://www.epa.gov/owow/nps/urbanmm/index.html>.

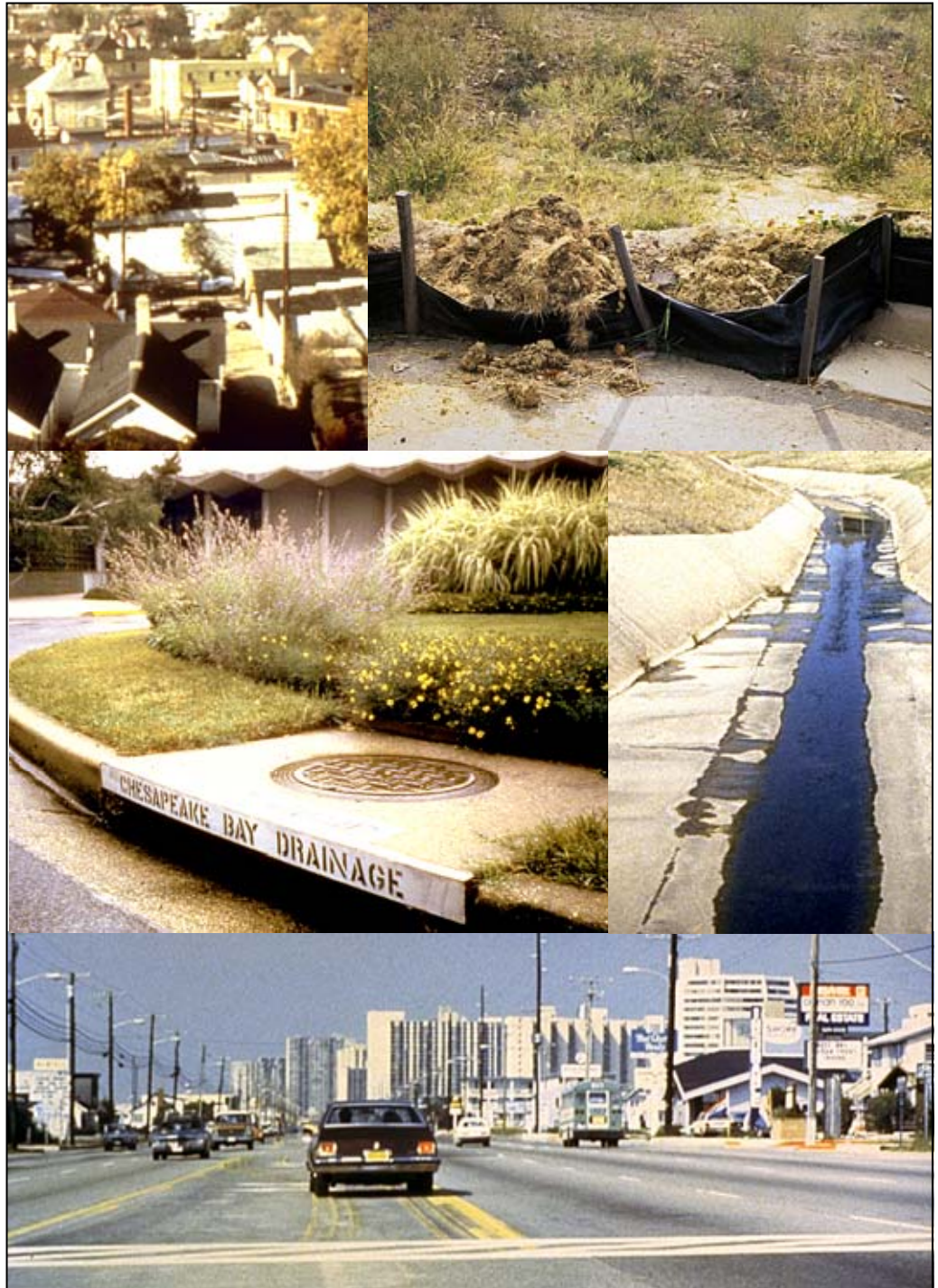
# **National Management Measures to Control Nonpoint Source Pollution from Urban Areas**

**Cover, Disclaimer, and Table of Contents**

November 2005



# National Management Measures to Control Nonpoint Source Pollution from Urban Areas





United States Environmental Protection Agency  
Office of Water  
Washington, DC 20460  
(4503F)

EPA-841-B-05-004  
November 2005

## **Disclaimer**

This document provides guidance to States, Territories, authorized Tribes, and the public regarding management measures that may be used to reduce nonpoint source pollution from urban areas. This document refers to statutory and regulatory provisions which contain legally binding requirements. This document does not substitute for those provisions or regulations, nor is it a regulation itself. Thus, it does not impose legally-binding requirements on EPA, States, Territories, authorized Tribes, or the public and may not apply to a particular situation based upon the circumstances. EPA, State, Territory, and authorized Tribe decision makers retain the discretion to adopt approaches on a case-by-case basis that differ from this guidance where appropriate. Interested parties are free to raise questions and objections about the appropriateness of the application of the guidance to a particular situation, and EPA will consider whether or not the recommendations in this guidance are appropriate in that situation. EPA may change this guidance in the future.

## Table of Contents

List of Figures .....	xiv
List of Tables .....	xv
0 Introduction.....	0-1
0.1 Purpose and Scope of the Guidance.....	0-1
0.1.1 Management Measures .....	0-3
0.1.2 Document Organization.....	0-5
0.2 Origin and Regulatory Context.....	0-6
0.2.1 Origin of This Guidance .....	0-6
0.2.2 Regulatory Context .....	0-7
0.3 Key Concepts.....	0-12
0.3.1 Watershed Approach.....	0-12
0.3.2 Stream Network .....	0-13
0.3.3 Impervious and Pervious Surfaces in the Urban Landscape.....	0-16
0.3.4 Impervious Cover Model .....	0-18
0.3.5 Changes in the Watershed Due to Increased Imperviousness .....	0-21
0.3.6 Nonpoint Source Pollutants and Their Impacts .....	0-28
0.3.7 Nonpoint Source Pollutant Loading.....	0-35
0.3.8 Other Impacts of Urban Runoff.....	0-35
0.3.9 Management Practices .....	0-36
0.4 Information Resources.....	0-38
0.5 References.....	0-40
1 Management Measure 1: Program Framework and Objectives.....	1-1
1.1 Management Measure.....	1-1
1.2 Management Measure Description and Selection.....	1-1
1.2.1 Description.....	1-1
1.2.1.1 Role of federal government .....	1-1
1.2.1.2 Role of state government .....	1-1
1.2.1.3 Role of regional authorities.....	1-2
1.2.1.4 Role of local government.....	1-2
1.2.2 Management Measure Selection .....	1-4
1.3 Management Practices .....	1-4
1.3.1 Establish Legal Authority .....	1-4
1.3.1.1 Examine existing laws and regulations.....	1-5
1.3.1.2 Develop or improve ordinances for water quality enhancement .....	1-8

1.3.1.3	Explore market-based regulatory approaches .....	1-15
1.3.2	Develop an Institutional Structure .....	1-16
1.3.2.1	Establish a watershed baseline.....	1-16
1.3.2.2	Set up an institutional structure.....	1-21
1.3.2.3	Determine budgetary resources available for watershed planning ..	1-23
1.3.2.4	Project future land use change in the watershed/subwatershed .....	1-24
1.3.2.5	Develop subwatershed plan .....	1-25
1.3.2.6	Adopt and implement the watershed plan.....	1-27
1.3.2.7	Revisit and update the watershed and subwatershed plan .....	1-27
1.3.3	Provide Adequate Funding and Staffing.....	1-27
1.3.3.1	Taxes and fees.....	1-28
1.3.3.2	Bonds .....	1-29
1.3.3.3	Leases.....	1-30
1.3.3.4	Intergovernmental transfers and assistance .....	1-30
1.3.3.5	Public-private partnerships .....	1-31
1.3.4	Foster Input from Technical Experts, Citizens, and Stakeholders.....	1-31
1.3.4.1	Technical committees .....	1-31
1.3.4.2	Citizen committees.....	1-31
1.3.4.3	Stakeholder committees .....	1-32
1.3.5	Establish Intergovernmental Coordination .....	1-33
1.3.6	Develop Training and Education Programs and Materials .....	1-34
1.4	Information Resources.....	1-36
1.5	References.....	1-39
2	Management Measure 2: Watershed Assessment.....	2-1
2.1	Management Measure.....	2-1
2.2	Management Measure Description and Selection.....	2-1
2.2.1	Description.....	2-1
2.2.2	Management Measure Selection .....	2-1
2.2.2.1	Overview.....	2-1
2.2.2.2	Examples of monitoring and assessment programs and methodologies .....	2-2
2.3	Management Practices .....	2-3
2.3.1	Characterize Watershed Conditions.....	2-3
2.3.1.1	Establish a reference condition .....	2-3
2.3.1.2	Model pollutant sources and loads.....	2-4
2.3.1.3	Model receiving water quality .....	2-8
2.3.2	Assess Cumulative Effects.....	2-10
2.3.3	Estimate the Effectiveness of Treatment Programs .....	2-10
2.3.4	Establish a Set of Watershed Indicators.....	2-12
2.3.5	Establish Water Quality Indicators .....	2-13

2.3.6	Establish Physical and Hydrological Indicators .....	2-16
2.3.7	Establish Biological Indicators .....	2-18
2.3.8	Establish Programmatic Indicators .....	2-22
2.3.9	Develop a Suite of Social Indicators.....	2-22
2.4	Information Resources .....	2-23
2.5	References.....	2-27
3	Management Measure 3: Watershed Protection .....	3-1
3.1	Management Measure .....	3-1
3.2	Management Measure Description and Selection.....	3-1
3.2.1	Description.....	3-1
3.2.2	Management Measure Selection .....	3-2
3.3	Management Practices .....	3-3
3.3.1	Resource Inventory and Information Analysis .....	3-3
3.3.1.1	Identify environmentally sensitive, critical conservation areas .....	3-4
3.3.1.2	Identify and protect drinking water sources.....	3-5
3.3.2	Development of Watershed Management Plan.....	3-7
3.3.3	Implement the Plan .....	3-9
3.3.3.1	Develop ordinances or regulations requiring nonpoint source pollution controls for new development and redevelopment.....	3-9
3.3.3.2	Plan infrastructure.....	3-9
3.3.3.3	Revise local zoning ordinances.....	3-10
3.3.3.3.1	Performance-based zoning.....	3-11
3.3.3.3.2	Overlay zones.....	3-11
3.3.3.3.3	Bonus or incentive zoning .....	3-11
3.3.3.3.4	Large-lot zoning.....	3-12
3.3.3.3.5	Farmland preservation zoning.....	3-12
3.3.3.3.6	Watershed-based zoning .....	3-13
3.3.3.3.7	Urban growth boundaries.....	3-14
3.3.3.4	Establish limits on impervious surfaces, encourage open space, and promote cluster development .....	3-15
3.3.3.5	Revitalize existing developed areas .....	3-16
3.3.3.6	Establish setback (buffer zone) standards.....	3-16
3.3.3.6.1	Buffer ordinance .....	3-18
3.3.3.6.2	Vegetative and use strategies within management zones .....	3-19
3.3.3.6.3	Provisions for buffer crossings .....	3-19
3.3.3.6.4	Integration of structural runoff management practices where appropriate.....	3-19
3.3.3.6.5	Development of buffer education and awareness programs .....	3-20
3.3.3.7	Establish slope restrictions.....	3-20

3.3.3.8	Promote urban forestry .....	3-20
3.3.3.9	Use site plan reviews and approval.....	3-21
3.3.3.10	Designate an entity or individual responsible for maintaining the infrastructure, including urban runoff management systems.....	3-22
3.3.3.11	Use official mapping.....	3-22
3.3.3.12	Require environmental impact assessment statements .....	3-22
3.3.4	Cost of Planning Programs .....	3-22
3.3.5	Land or Development Rights Acquisition Practices.....	3-23
3.3.5.1	Fee simple acquisition/conservation easements.....	3-24
3.3.5.2	Leases, deed restrictions, and covenants.....	3-24
3.3.5.3	Transfer of development rights.....	3-25
3.3.5.4	Purchase of development rights .....	3-27
3.3.5.5	Land trusts.....	3-27
3.3.5.6	Agricultural and forest districts .....	3-27
3.3.5.7	Cost and effectiveness of land acquisition programs.....	3-27
3.4	Information Resources .....	3-29
3.5	References.....	3-33
4	Management Measure 4: Site Development.....	4-1
4.1	Management Measure.....	4-1
4.2	Management Measure Description and Selection.....	4-1
4.2.1	Description.....	4-1
4.2.2	Management Measure Selection.....	4-3
4.3	Management Practices .....	4-3
4.3.1	Site Planning Practices.....	4-5
4.3.1.1	Select site designs that preserve or minimize impacts to predevelopment site hydrology and topography.....	4-5
4.3.1.2	Protect environmentally sensitive areas.....	4-5
4.3.1.3	Practice site fingerprinting.....	4-6
4.3.1.4	Use cluster development.....	4-6
4.3.1.5	Create open space .....	4-8
4.3.2	On-Lot Impervious Surfaces.....	4-16
4.3.2.1	Reduce the hydraulic connectivity of impervious surfaces .....	4-16
4.3.2.2	Practice rooftop greening.....	4-18
4.3.2.3	Relax frontage and setback requirements .....	4-22
4.3.2.4	Modify sidewalk standards .....	4-22
4.3.2.5	Modify driveway standards.....	4-23
4.3.3	Residential Street and Right-of-Way Impervious Surfaces.....	4-23
4.3.3.1	Decrease street pavement width and length.....	4-23
4.3.3.2	Decrease street right-of-way width.....	4-23
4.3.3.3	Use alternative cul-de-sac designs .....	4-24



4.3.4	Parking Lot Impervious Surfaces.....	4-25
4.3.5	Xeriscaping Techniques.....	4-27
4.4	Information Resources.....	4-30
4.5	References.....	4-32
5	Management Measure 5: New Development Runoff Treatment.....	5-1
5.1	Management Measure.....	5-1
5.2	Management Measure Description and Selection.....	5-2
5.2.1	Description.....	5-2
5.2.1.1	Pollutants and total suspended solids.....	5-3
5.2.1.2	Runoff.....	5-5
5.2.2	Management Measure Selection.....	5-6
5.2.3	General Categories of Urban Runoff Control.....	5-9
5.2.3.1	Infiltration practices.....	5-9
5.2.3.2	Filtration practices.....	5-12
5.2.3.3	Detention/retention practices.....	5-12
5.2.3.4	Evaporation practices.....	5-13
5.3	Management Practices.....	5-13
5.3.1	Infiltration Practices.....	5-13
5.3.1.1	Infiltration basins.....	5-13
5.3.1.2	Infiltration trenches.....	5-15
5.3.1.3	Pervious or porous pavements.....	5-15
5.3.2	Vegetated Open Channel Practices.....	5-19
5.3.3	Filtering Practices.....	5-22
5.3.3.1	Filtration basins and sand filters.....	5-22
5.3.3.2	Media filtration units.....	5-28
5.3.3.3	Bioretention systems.....	5-29
5.3.4	Detention and Retention Practices.....	5-34
5.3.4.1	Detention ponds and vaults.....	5-34
5.3.4.2	Retention ponds.....	5-34
5.3.4.3	Constructed wetlands.....	5-38
5.3.5	Other Practices.....	5-44
5.3.5.1	Water quality inlets.....	5-45
5.3.5.2	Hydrodynamic devices.....	5-45
5.3.5.3	Baffle boxes.....	5-46
5.3.5.4	Catch basin inserts.....	5-46
5.3.5.5	Alum.....	5-47
5.3.5.6	Vegetated filter strips.....	5-47
5.3.5.7	Street surface and subsurface storage.....	5-49
5.3.5.8	On-lot storage practices.....	5-49
5.3.5.9	Microbial disinfection.....	5-53

---

5.4	Performance and Cost Information for Management Practices .....	5-54
5.5	Managing Structural Controls to Reduce Mosquito-Breeding Habitat.....	5-62
5.6	Information Resources .....	5-67
5.7	References.....	5-71
6	Management Measure 6: New and Existing On-Site Wastewater Treatment Systems .....	6-1
6.1	Management Measure .....	6-1
6.2	Management Measure Description.....	6-2
6.2.1	Description.....	6-2
6.2.2	Management Measure Selection .....	6-6
6.3	Management Practices .....	6-6
6.3.1	Permitting and Installation Programs.....	6-6
6.3.1.1	Planning activities.....	6-7
6.3.1.1.1	Comprehensive planning .....	6-7
6.3.1.1.2	Wastewater treatment continuum concept .....	6-8
6.3.1.1.3	Centralized sewage treatment .....	6-9
6.3.1.2	System selection, site evaluation, design, and installation .....	6-10
6.3.1.2.1	Performance-based programs.....	6-10
6.3.1.2.2	Modeling system performance and impacts .....	6-12
6.3.1.2.3	Applying system siting criteria .....	6-13
6.3.1.2.4	Site evaluations that assess suitability for specific technologies .....	6-14
6.3.1.3	Education, training, licensing, and/or certification programs.....	6-18
6.3.1.4	Inspection of new on-site wastewater treatment systems .....	6-21
6.3.1.5	Installation of conventional or alternative systems.....	6-22
6.3.1.5.1	Pollutant removal processes for conventional systems..	6-24
6.3.1.5.2	Septic tanks .....	6-26
6.3.1.5.3	Subsurface wastewater infiltration systems .....	6-27
6.3.1.5.4	Leaching chambers .....	6-28
6.3.1.5.5	Alternative systems.....	6-29
6.3.1.5.6	Elevated systems.....	6-31
6.3.1.5.7	Intermittent sand/media filters .....	6-32
6.3.1.5.8	Recirculating sand/media filters .....	6-33
6.3.1.5.9	Anaerobic upflow filters .....	6-33
6.3.1.5.10	Cluster systems .....	6-34
6.3.1.5.11	Constructed wetlands .....	6-34
6.3.1.5.12	Sequencing batch reactors.....	6-35
6.3.1.5.13	Aerobic treatment units.....	6-36
6.3.1.5.14	Fixed film systems .....	6-36
6.3.1.5.15	Pressure distribution systems.....	6-37
6.3.1.5.16	Evapotranspiration .....	6-37
6.3.1.5.17	Spray irrigation .....	6-37

6.3.1.5.18	Disinfection devices.....	6-38
6.3.1.5.19	Water separation systems.....	6-38
6.3.1.5.20	Vaults or holding tanks.....	6-38
6.3.2	Operation and Maintenance Programs.....	6-38
6.3.2.1	Development of system inventories and assessment of maintenance needs.....	6-40
6.3.2.2	Management, operation, and maintenance policies.....	6-42
6.3.2.2.1	Voluntary Management.....	6-45
6.3.2.2.2	Regulatory Management.....	6-45
6.3.2.2.3	Direct management.....	6-46
6.3.2.3	Inspection and monitoring programs.....	6-47
6.3.2.3.1	System inspections.....	6-48
6.3.2.3.2	Improving system effectiveness through water conservation and pollutant reduction.....	6-50
6.3.2.4	Management of residuals to ensure that they do not present significant risks to human health or water resources.....	6-51
6.4	Information Resources.....	6-54
6.5	References.....	6-55
7	Management Measure 7: Bridges and Highways.....	7-1
7.1	Management Measure.....	7-1
7.2	Management Measure Description and Selection.....	7-1
7.2.1	Description.....	7-1
7.2.2	Management Measure Selection.....	7-6
7.3	Management Practices.....	7-7
7.3.1	Site Planning and Design Practices.....	7-7
7.3.2	Soil Bioengineering and Other Runoff Controls for Highways.....	7-8
7.3.2.1	Live stakes.....	7-8
7.3.2.2	Fascines.....	7-8
7.3.2.3	Brushlayers.....	7-8
7.3.2.4	Branchpacking.....	7-8
7.3.2.5	Live gully repair.....	7-9
7.3.2.6	Live cribwalls.....	7-9
7.3.2.7	Vegetated rock gabions.....	7-9
7.3.2.8	Vegetated rock walls.....	7-9
7.3.2.9	Joint planting.....	7-9
7.3.2.10	Other runoff and sediment controls for highways.....	7-9
7.3.3	Structural Runoff Controls for Bridges.....	7-10
7.3.3.1	Scupper drains with runoff conveyance systems.....	7-10
7.3.3.2	Other runoff treatment practices.....	7-11
7.3.4	Bridge Operation and Maintenance Controls.....	7-11
7.3.4.1	Enclosures.....	7-12

---

7.3.4.2	Containment and collection .....	7-13
7.3.5	Nonstructural Runoff Control Practices.....	7-13
7.3.5.1	Implement street sweeping .....	7-13
7.3.5.2	Consider alternatives to curbs.....	7-15
7.3.5.3	Install catch basin inserts .....	7-15
7.3.5.4	Control litter and debris on roadsides .....	7-15
7.3.5.5	Manage pesticide and herbicide use .....	7-16
7.3.5.6	Reduce fertilizer use .....	7-16
7.3.5.7	Reduce direct discharges.....	7-16
7.3.5.8	Practice dewatering.....	7-16
7.3.5.9	Practice spill prevention and control.....	7-16
7.3.5.10	Properly handle and dispose of concrete and cement .....	7-16
7.3.5.11	Manage contaminated soil and water.....	7-17
7.3.5.12	Practice environmentally friendly winter road maintenance .....	7-17
7.4	Information Resources .....	7-20
7.5	References.....	7-23
8	Management Measure 8: Construction Site Erosion, Sediment, and Chemical Control .....	8-1
8.1	Management Measure.....	8-1
8.2	Management Measure Description and Selection.....	8-1
8.2.1	Description.....	8-1
8.2.1.1	Sediment .....	8-2
8.2.1.2	Pesticides.....	8-3
8.2.1.3	Petroleum products .....	8-4
8.2.1.4	Fertilizers .....	8-4
8.2.1.5	Solid wastes .....	8-4
8.2.1.6	Construction chemicals.....	8-4
8.2.1.7	Contaminated soils.....	8-5
8.2.2	Management Measure Selection.....	8-5
8.3	Management Practices .....	8-6
8.3.1	Erosion and Sediment Control Programs.....	8-6
8.3.1.1	Prepare erosion and sediment control plans.....	8-6
8.3.1.2	Provide education and training opportunities for construction personnel .....	8-9
8.3.1.3	Establish plan review and modification procedures .....	8-10
8.3.1.4	Assess ESC practices after storm events .....	8-10
8.3.1.5	Ensure ESC plan implementation .....	8-11
8.3.2	Erosion Control Practices .....	8-12
8.3.2.1	Schedule projects so clearing and grading are done during the time of minimum erosion potential.....	8-12
8.3.2.2	Phase construction .....	8-12
8.3.2.3	Practice site fingerprinting.....	8-14

---

8.3.2.4	Locate potential pollutant sources away from steep slopes, water bodies, and critical areas .....	8-14
8.3.2.5	Route construction traffic to avoid existing or newly planted vegetation .....	8-14
8.3.2.6	Protect natural vegetation with fencing, tree armoring, and retaining walls or tree wells .....	8-14
8.3.2.7	Protect environmentally sensitive areas .....	8-14
8.3.2.8	Stockpile topsoil and reapply as a soil amendment to reestablish vegetation .....	8-15
8.3.2.9	Cover or stabilize soil stockpiles .....	8-16
8.3.2.10	Use wind erosion controls .....	8-16
8.3.2.11	Intercept runoff above disturbed slopes and convey it to a permanent channel or storm drain .....	8-16
8.3.2.12	On long or steep, disturbed, or man-made slopes, construct benches, terraces, or ditches at regular intervals to intercept runoff .....	8-16
8.3.2.13	Use retaining walls .....	8-16
8.3.2.14	Provide linings for urban runoff conveyance channels .....	8-16
8.3.2.15	Use check dams .....	8-17
8.3.2.16	Seed disturbed areas .....	8-17
8.3.2.17	Use mulches .....	8-18
8.3.2.18	Use sodding for permanent stabilization .....	8-18
8.3.2.19	Install erosion control blankets .....	8-19
8.3.2.20	Use chemicals such as PAM to stabilize soils .....	8-20
8.3.2.21	Use wildflower cover .....	8-22
8.3.3	Sediment Control Practices .....	8-22
8.3.3.1	Install sediment basins .....	8-22
8.3.3.2	Use modified risers and skimmers .....	8-24
8.3.3.3	Install sediment traps .....	8-25
8.3.3.4	Use silt fence .....	8-25
8.3.3.5	Install compost filter berms .....	8-27
8.3.3.6	Establish inlet protection .....	8-27
8.3.3.7	Designate and reinforce construction entrances .....	8-27
8.3.3.8	Install vegetated filter strips .....	8-28
8.3.3.9	Use vegetated buffers .....	8-28
8.3.4	Develop and Implement Programs to Control Chemicals and Other Construction Materials .....	8-28
8.3.4.1	Develop and implement a materials management program .....	8-28
8.3.4.2	Develop and implement a spill control plan .....	8-30
8.3.4.3	Develop and implement a waste disposal program .....	8-31
8.4	Information Resources .....	8-34
8.5	References .....	8-37
9	Management Measure 9: Pollution Prevention .....	9-1

---

9.1	Management Measure .....	9-1
9.2	Management Measure Description and Selection.....	9-1
9.2.1	Description.....	9-1
9.2.1.1	Household chemicals .....	9-2
9.2.1.2	Failing septic systems .....	9-3
9.2.1.3	Lawn and garden activities .....	9-3
9.2.1.4	Commercial activities .....	9-4
9.2.1.5	Pet wastes.....	9-5
9.2.1.6	Trash .....	9-5
9.2.2	Management Measure Selection .....	9-6
9.3	Management Practices .....	9-6
9.3.1	Household Chemicals .....	9-6
9.3.1.1	Educate the public on proper storage and disposal of household chemicals.....	9-7
9.3.1.2	Conduct storm drain marking .....	9-7
9.3.1.3	Encourage responsible car washing practices.....	9-7
9.3.2	Lawn, Garden, and Landscape Activities .....	9-8
9.3.2.1	Lawn conversion.....	9-9
9.3.2.2	Soil building.....	9-10
9.3.2.3	Grass selection .....	9-10
9.3.2.4	Mowing and thatch management .....	9-11
9.3.2.5	Yard waste management .....	9-11
9.3.2.6	Minimal fertilization .....	9-12
9.3.2.7	Weed control and tolerance .....	9-13
9.3.2.8	Pest management .....	9-13
9.3.2.9	Point-of-sale education .....	9-16
9.3.2.10	Sensible irrigation .....	9-17
9.3.3	Commercial Activities .....	9-18
9.3.3.1	Detect and eliminate illicit connections.....	9-18
9.3.3.2	Encourage good housekeeping practices at commercial facilities...	9-21
9.3.3.3	Provide training and education for employees and customers.....	9-21
9.3.3.4	Devise spill prevention, control, and clean-up plans .....	9-22
9.3.3.5	Conduct an environmental audit .....	9-22
9.3.3.6	Practice safe equipment washing and maintenance .....	9-22
9.3.3.7	Use care when performing construction, repairs, or remodeling.....	9-23
9.3.3.8	Proper disposal of pet waste .....	9-23
9.3.4	Trash .....	9-24
9.3.5	Nonpoint Source Pollution Education for Citizens.....	9-25
9.3.5.1	Use multilingual nonpoint source messages.....	9-26
9.3.5.2	Use classroom education to deliver nonpoint source messages.....	9-26
9.4	Information Resources .....	9-28
9.4.1	General.....	9-28

9.4.2	Yards: General Resources.....	9-32
9.4.3	Yard Resources for Homeowners .....	9-32
9.4.4	Yard Resources for Lawn Care Professionals .....	9-32
9.5	References.....	9-34
10	Management Measure 10: Existing Development.....	10-1
10.1	Management Measure.....	10-1
10.2	Management Measure Description.....	10-1
10.2.1	Description.....	10-1
10.2.2	Management Measure Selection.....	10-3
10.3	Management Practices .....	10-4
10.3.1	Identify, Prioritize, and Schedule Retrofit Opportunities .....	10-4
10.3.1.1	Evaluate existing data .....	10-4
10.3.1.2	Choose appropriate management practices based on site conditions.....	10-5
10.3.1.3	Incorporate low-impact development practices into existing development.....	10-5
10.3.1.4	Identify undeveloped and privately owned land for acquisition.....	10-6
10.3.1.5	Use routine maintenance as an opportunity for retrofitting existing infrastructure .....	10-6
10.3.2	Implement Retrofit Projects as Scheduled.....	10-7
10.3.2.1	Retrofit existing runoff management facilities .....	10-7
10.3.2.2	Modify the upstream end of road culverts .....	10-8
10.3.2.3	Modify storm drainage pipe outfalls.....	10-9
10.3.2.4	Add retention structures to channelized streams .....	10-9
10.3.2.5	Install runoff management practices in or adjacent to large parking areas .....	10-10
10.3.2.6	Construct new practices in highway rights-of-way .....	10-10
10.3.2.7	Install trash-capturing devices .....	10-10
10.3.2.8	Install inlet and grate inserts .....	10-10
10.3.3	Restore and Limit the Destruction of Natural Runoff Conveyance Systems.....	10-10
10.3.3.1	Disconnect impervious areas .....	10-11
10.3.3.2	Encourage overland sheet flow.....	10-12
10.3.3.3	Increase flow path.....	10-12
10.3.3.4	Use open swales in place of traditional storm drain systems.....	10-12
10.3.3.5	Establish vegetation throughout the site .....	10-12
10.3.3.6	Reestablish ground water recharge .....	10-13
10.3.3.7	Protect sensitive areas .....	10-14
10.3.4	Restore Natural Streams .....	10-14
10.3.4.1	Partially restore the predevelopment hydrologic regime .....	10-15
10.3.4.2	Stabilize channel morphology.....	10-15

---

10.3.4.3	Restore instream habitat structure.....	10-16
10.3.4.4	Reestablish riparian cover.....	10-16
10.3.4.5	Protect critical stream substrates.....	10-18
10.3.4.6	Promote recolonization of the aquatic community.....	10-18
10.3.4.7	Daylight streams.....	10-18
10.3.5	Preserve, Enhance, or Establish Buffers.....	10-19
10.3.6	Redevelop Urban Areas to Decrease Runoff-Related Impacts.....	10-20
10.3.6.1	Encourage infill development.....	10-20
10.3.6.2	Assess vacant, abandoned lots and areas of potentially contaminated soils to promote redevelopment.....	10-20
10.4	Information Resources.....	10-22
10.5	References.....	10-24
11	Management Measure 11: Operation and Maintenance.....	11-1
11.1	Management Measure.....	11-1
11.2	Management Measure Description and Selection.....	11-1
11.2.1	Description.....	11-1
11.2.2	Management Measure Selection.....	11-2
11.3	Management Practices.....	11-3
11.3.1	Establishing an Operation and Maintenance Program.....	11-3
11.3.2	Source Control Operation and Maintenance.....	11-7
11.3.3	Treatment Control Operation and Maintenance.....	11-9
11.4	Information Resources.....	11-17
11.5	References.....	11-18
12	Management Measure 12: Evaluate Program Effectiveness.....	12-1
12.1	Management Measure.....	12-1
12.2	Management Measure Description and Selection.....	12-1
12.2.1	Description.....	12-1
12.2.2	Management Measure Selection.....	12-1
12.3	Management Practices.....	12-1
12.3.1	Assess the Runoff Management Program Framework.....	12-1
12.3.1.1	Qualitative measures.....	12-2
12.3.1.2	Quantitative measures.....	12-3
12.3.1.3	Quality assurance/quality control.....	12-3
12.3.2	Track Management Practice Implementation.....	12-4
12.3.2.1	Track permits.....	12-4
12.3.2.2	Use operation and maintenance records.....	12-4
12.3.2.3	Use geographic information systems.....	12-5



12.3.2.4	Develop surveys.....	12-5
12.3.2.5	Consider expert evaluations.....	12-6
12.3.3	Gauge Improvements in Water Quality Resulting from Management Practice Implementation .....	12-6
12.3.3.1	Conduct trend monitoring.....	12-9
12.3.3.2	Conduct effectiveness monitoring .....	12-9
12.3.4	Develop and Implement a Schedule to Improve the Management Program Framework.....	12-10
12.4	Information Resources.....	12-11
12.5	References.....	12-12

## List of Figures

Figure 0.1:	Components of a comprehensive runoff management program.....	0-2
Figure 0.2:	Twelve management measures associated with the runoff management program cycle.....	0-4
Figure 0.3:	Scales of watershed management units.....	0-16
Figure 0.4:	Impacts of urbanization on the water cycle .....	0-22
Figure 0.5:	Changes in stream flow hydrograph as a result of urbanization.....	0-23
Figure 0.6:	Response of stream geometry to urbanization.....	0-23
Figure 0.7:	Relationship between impervious cover and aquatic insect diversity in Anacostia River subwatersheds .....	0-27
Figure 0.8:	Fish diversity in four subwatersheds of different impervious cover in the Maryland Piedmont.....	0-28
Figure 1.1:	Adopted watershed protection plan for the City of High Point, North Carolina....	1-7
Figure 1.2:	Example of part of a subwatershed base map.....	1-17
Figure 2.1:	Conceptual process for assessing cumulative effects .....	2-11
Figure 2.2:	Conceptual diagram of the stressor identification process .....	2-20
Figure 4.1:	Schematic of a residential cluster development.....	4-7
Figure 4.2:	Schematic of a rural cluster development.....	4-7
Figure 4.3:	Development of a conservation subdivision.....	4-12
Figure 4.4:	Schematic drawings of conventional (a), parkway (b), and clustered (c) development scenarios for the Chapel Run subdivision.....	4-13
Figure 4.5:	Schematic representation of directly connected and not-directly connected impervious areas. ....	4-16
Figure 4.6:	Components of the vegetated roof cover.....	4-18
Figure 4.7:	Runoff attenuation efficiency for a 0.4-inch rainfall event with saturated Media .....	4-19
Figure 4.8:	Five turnaround options at the end of a residential street.....	4-25

Figure 4.9: Impervious cover created by each turnaround option shown in Figure 4.8.....	4-26
Figure 5.1: Schematic of an infiltration basin .....	5-14
Figure 5.2: Schematic of an infiltration trench.....	5-16
Figure 5.3: Photo showing several types of pervious modular pavement installations.....	5-17
Figure 5.4: Schematic of a grass channel. ....	5-20
Figure 5.5: Schematic of a dry swale. ....	5-21
Figure 5.6: Schematic of a surface sand filter. ....	5-24
Figure 5.7: Schematic of an underground sand filter. ....	5-25
Figure 5.8: Schematic of a perimeter sand filter. ....	5-26
Figure 5.9: Schematic of an organic media filter. ....	5-27
Figure 5.10: Schematic of a multi-chambered treatment train .....	5-28
Figure 5.11: Schematic of a bioretention system. ....	5-30
Figure 5.12: Schematic of a bioretention parking lot island. ....	5-31
Figure 5.13: Schematic of a dry extended detention pond .....	5-35
Figure 5.14: Schematic of a wet pond.....	5-36
Figure 5.15: Schematic of a shallow wetland.....	5-39
Figure 5.16: Schematic of a vegetated filter strip.....	5-48
Figure 5.17: Runoff pooling on a street surface designed for temporary storage. ....	5-49
Figure 5.18: A rain barrel that collects runoff from a roof gutter downspout.....	5-50
Figure 6.1: Conventional on-site wastewater treatment system. ....	6-4
Figure 6.2: Septic tank detail.....	6-22
Figure 6.3: Leaching chamber subsurface wastewater infiltration system.....	6-29
Figure 6.4: Schematic of a typical mound system.....	6-32
Figure 6.5: Components of a vegetated submerged bed.....	6-35
Figure 7.1: Median hydrocarbon concentrations by land use.....	7-2
Figure 8.1: Schematic of the basic polymer treatment system. ....	8-21

## List of Tables

Table 0.1: Leading sources of water quality impairment related to human activities for rivers, lakes, and estuaries.....	0-1
Table 0.2: Key differences between the <i>Guidance Specifying Management Measures for Sources of Nonpoint Pollution in Coastal Waters</i> and <i>National Management Measures to Control Nonpoint Source Pollution from Urban Areas</i> . ....	0-7
Table 0.3: Comparison of management measures to the six minimum control measures of NPDES Phase II.....	0-9
Table 0.4: National stream order statistics.....	0-14

Table 0.5:	Idealized characteristics of five watershed management units with respect to size and the influence of impervious cover .....	0-20
Table 0.6:	Characteristics of aquatic integrity in urban watersheds. ....	0-21
Table 0.7:	Impacts from increases in impervious surfaces .....	0-24
Table 0.8:	Summary of case studies linking urbanization to hydrological impacts on streams .....	0-24
Table 0.9:	Typical pollutant concentrations found in urban storm water .....	0-29
Table 1.1:	Summary of the Randleman Lake water supply watershed protection rules .....	1-6
Table 1.2:	Redesign analyses comparing impervious cover and storm water runoff from conventional and open space subdivisions.....	1-9
Table 1.3:	Elements of three watershed management structures .....	1-22
Table 1.4:	Types of taxes and fees that can be used to raise money for storm water management programs .....	1-29
Table 3.1:	Cost comparison of stream preservation vs. stream restoration .....	3-3
Table 3.2:	Types of lands that should be preserved for watershed protection .....	3-5
Table 4.1:	Theoretical comparison of conventional and low-impact alternative designs for the Chapel Run site. ....	4-14
Table 4.2:	Theoretical comparison of itemized costs for conventional and low-impact alternative designs for the Chapel Run site.....	4-15
Table 5.1:	Sediment particle size distribution.....	5-4
Table 5.2:	Select local and state programs with TSS performance standards .....	5-6
Table 5.3:	Select local programs with peak discharge and/or runoff volume performance standards .....	5-7
Table 5.4:	Pollutant removal efficiencies for the compost storm water treatment facility from 1991 to 1994.....	5-29
Table 5.5:	Design considerations for ponds and wetlands .....	5-37
Table 5.6:	Advantages and disadvantages of management practices .....	5-54
Table 5.7:	Regional, site-specific, and maintenance considerations for management practices. ....	5-57
Table 5.8:	Effectiveness of management practices for runoff control .....	5-59
Table 5.9:	Costs of selected management practices.....	5-61
Table 6.1:	Common causes of OWTS failure .....	6-2
Table 6.2:	Pollutants of concern for OWTSs.....	6-3
Table 6.3:	Site features that should be evaluated before OWTS design and installation. ....	6-16
Table 6.4:	Practices to characterize surface and subsurface features of proposed OWTS sites .....	6-16
Table 6.5:	Practices to characterize subsurface conditions through test pit inspection. ....	6-17
Table 6.6:	Survey of state certification and licensing programs for onsite wastewater service providers .....	6-19
Table 6.7:	Treatment technologies for OWTSs. ....	6-23

---

Table 6.8:	Wastewater constituents of concern and representative estimates of concentrations in the effluent of various treatment units.....	6-26
Table 6.9:	Summary of estimated capital and operation and maintenance costs for OWTSs.....	6-30
Table 6.10:	Guidelines for OWTS management programs under a tiered approach.....	6-43
Table 6.11:	Program elements and functional responsibilities example matrix. ....	6-44
Table 6.12:	Comparison of current and federally mandated flow rates and flush volumes.....	6-51
Table 6.13:	Residential wastewater pollutant contributions by source.....	6-51
Table 7.1:	Primary sources of highway runoff pollutants.....	7-4
Table 7.2:	Range of average values for runoff contaminant concentration for selected highway contaminants.....	7-4
Table 7.3:	Results of three studies that analyzed chemical and physical parameters of snowmelt.....	7-6
Table 7.4:	Street dirt chemical quality.....	7-14
Table 7.5:	Advantages and disadvantages of road salt and alternative deicing chemicals....	7-18
Table 8.1:	Erosion and sediment associated with construction.....	8-3
Table 8.2:	ESC plan requirement for selected states.....	8-7
Table 8.3:	Cost and effectiveness of selected erosion control practices.....	8-13
Table 8.4:	Summary of operating performance data for six test sites.....	8-21
Table 8.5:	Cost and effectiveness for selected sediment control practices.....	8-23
Table 8.6:	Sediment retention efficiency of sediment basins.....	8-25
Table 9.1:	Mowing heights for various grass types.....	9-11
Table 9.2:	Select cost and audience information for various outreach techniques.....	9-25
Table 11.1:	Properties of urban storm water solids/residuals.....	11-6
Table 11.2:	Street sweeper O&M costs.....	11-8
Table 11.3:	Maintenance costs, activities, and schedules for runoff control practices in 1998 dollars.....	11-9
Table 11.4:	Typical O&M equipment and material costs.....	11-15
Table 12.1:	Examples of variables that can be measured to assess changes in management practice implementation and water quality.....	12-8

