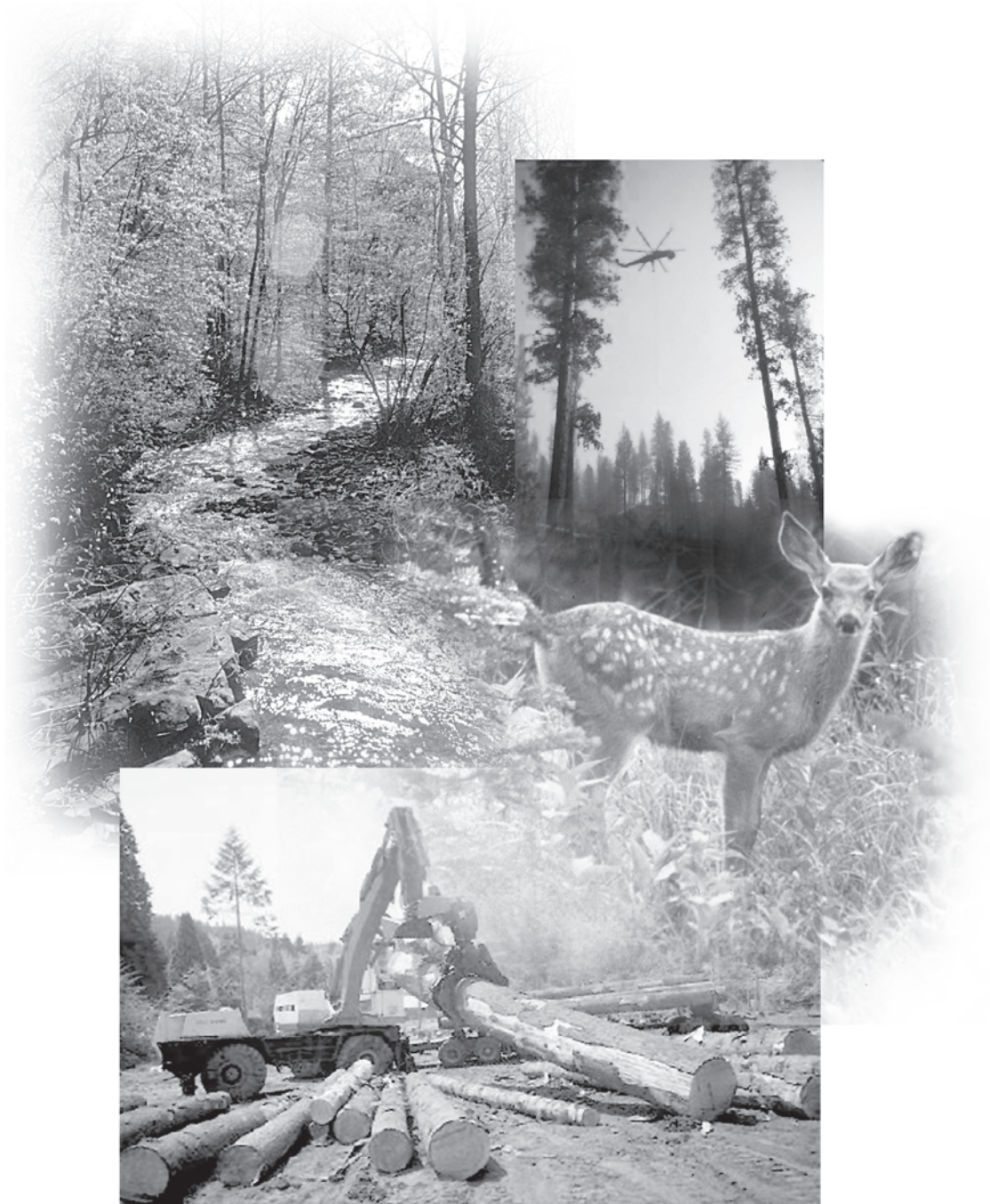




National Management Measures to Control Nonpoint Source Pollution from Forestry





United States Environmental Protection Agency
Office of Water
Washington, DC 20460
(4503F)

EPA-841-B-05-001

April 2005

National Management Measures to Control Nonpoint Source Pollution from Forestry

Nonpoint Source Control Branch
Office of Wetlands, Oceans and Watersheds
Office of Water
U.S. Environmental Protection Agency

April 2005

DISCLAIMER

This document provides guidance to States, Territories, authorized Tribes, commercial and non-industrial private forest owners and managers, and the public regarding management measures that may be used to reduce nonpoint source pollution from forestry activities. At times this document refers to statutory and regulatory provisions which contain legally binding requirements. This document does not substitute for those provisions or regulations, nor is it a regulation itself. Thus, it does not impose legally-binding requirements on EPA, States, Territories, authorized Tribes, or the public and may not apply to a particular situation based upon the circumstances. EPA, State, Territory, and authorized Tribe decision makers retain the discretion to adopt approaches to control nonpoint source pollution from forestry activities on a case-by-case basis that differ from this guidance where appropriate. EPA may change this guidance in the future.

CONTENTS

CHAPTER 1: INTRODUCTION	1-1
The Purpose and Scope of This Guidance	1-1
What Is Nonpoint Source Pollution?	1-4
Programs to Control Nonpoint Source Pollution	1-5
Coastal Nonpoint Pollution Control Program	1-6
Nonpoint Source Program—Section 319 of the Clean Water Act	1-6
National Estuary Program—Section 320 of the Clean Water Act	1-7
Section 404 of the Clean Water Act	1-7
Total Maximum Daily Loads—Section 303 of the Clean Water Act	1-9
Forest Stewardship	1-10
CHAPTER 2: WATER QUALITY AND FORESTRY ACTIVITIES	2-1
Forested Watershed Hydrology	2-2
Forestry Activities and Forest Hydrology	2-3
Road Construction and Road Use	2-4
Timber Harvesting	2-5
Site Preparation and Forest Regeneration	2-7
Prescribed Burning	2-8
Forestry Pollutants and Water Quality Effects	2-8
Sediment	2-9
Increased Temperature	2-11
Nutrients	2-12
Organic Debris	2-12
Forest Chemicals	2-13
Hydrologic Modifications	2-13
Physical Barriers	2-14
Cumulative Effects	2-15
Mechanisms to Control Forestry Nonpoint Source Pollution	2-16
Management Measures	2-17
Best Management Practices	2-17
Best Management Practice Systems	2-18
Cost Estimates for Forest Practice Implementation	2-19

CHAPTER 3: MANAGEMENT MEASURES	3-1
Scope of This Chapter	3-1
Management Measure Effectiveness	3-2
Examples of Management Measure Effectiveness	3-3
3A: PREHARVEST PLANNING	3-5
Management Measure Description	3-6
Benefits of Preharvest Planning	3-7
Best Management Practices	3-9
Harvest Planning Practices	3-9
Road System Planning Practices	3-9
Road Location Practices	3-9
Road Design Practices	3-12
Road Surfacing Practices	3-14
Road Stream Crossing Practices	3-14
Scheduling Practices	3-16
Preharvest Notification Practices	3-16
3B: STREAMSIDE MANAGEMENT AREAS	3-17
Management Measure Description	3-17
Benefits of Streamside Management Areas	3-19
Best Management Practices	3-23
3C: ROAD CONSTRUCTION/RECONSTRUCTION	3-25
Management Measure Description	3-25
General Road Construction Considerations	3-25
Road Surface Shape and Composition	3-27
Slope Stabilization	3-32
Road Construction, Fish Habitat, Stream Crossings, and Fish Passage	3-34
Wetland Road Considerations	3-36
Benefits of Road Construction Practices	3-37
Road Construction and Stream Crossing BMP Costs	3-38
Best Management Practices	3-39
Road Surface Construction Practices	3-39
Road Surface Drainage Practices	3-41
Road Slope Stabilization Practices	3-47
Stream Crossing Practices	3-48
Fish Passage Practices	3-54
3D: ROAD MANAGEMENT	3-57
Management Measure Description	3-57
Road Reconstruction	3-58
Road Decommissioning	3-59
Benefits of Road Management	3-59

Best Management Practices	3-61
Road Maintenance Practices	3-61
Wet and Winter Road Practices	3-63
Stream Crossing and Drainage Structure Practices	3-64
Road Decommissioning, Obliteration, and Closure Practices	3-64
3E: TIMBER HARVESTING	3-69
Management Measure Description	3-69
Benefits of Timber Harvesting Practices	3-72
Best Management Practices	3-73
Harvesting Practices	3-73
Practices for Landings	3-74
Ground Skidding Practices	3-75
Cable Yarding Practices	3-76
Other Yarding Methods	3-77
Winter Harvesting	3-79
Petroleum Management Practices	3-80
3F: SITE PREPARATION AND FOREST REGENERATION	3-81
Management Measure Description	3-81
Mechanical Site Preparation in Wetlands	3-84
Benefits of Site Preparation Practices	3-84
Best Management Practices	3-86
Site Preparation Practices	3-86
Forest Regeneration Practices	3-87
3G: FIRE MANAGEMENT	3-89
Management Measure Description	3-89
Cost of Prescribed Burning	3-90
Best Management Practices	3-90
Prescribed Fire Practices	3-90
Prescribed Fire in Wetlands	3-90
Wildfire Practices	3-91
Fireline Practices	3-91
Fireline Rehabilitation	3-92
3H: REVEGETATION OF DISTURBED AREAS	3-93
Management Measure Description	3-93
Benefits and Costs of Revegetation Practices	3-93
Best Management Practices	3-95
3I: FOREST CHEMICAL MANAGEMENT	3-99
Management Measure Description	3-99
Cost of Forest Chemical Applications	3-102

Best Management Practices	3-103
3J: WETLANDS FOREST MANAGEMENT	3-107
Management Measure Description	3-107
Forestry in Wetlands: Section 404	3-108
Code of Federal Regulations, Title 40, section 232.3: Activities Not Requiring a Section 404 Permit	3-109
Best Management Practices	3-110
Wetland Harvesting Practices	3-110
Wetland Road Design and Construction Practices	3-112
Practices for Crossing Wetlands in Winter	3-115
Wetland Site Preparation and Regeneration Practices	3-116
Wetland Fire Management Practices	3-117
Chemical Management Practices	3-118
EPA and Corps of Engineers Memorandum to the Field	3-118
Mechanical Site Preparation Activities and CWA Section 404	3-118
Circumstances in Which Mechanical Site Preparation Activities Require a Section 404 Permit	3-119
Circumstances in Which Mechanical Site Preparation Activities Do Not Require a Section 404 Permit	3-120
Best Management Practices	3-121

CHAPTER 4: USING MANAGEMENT MEASURES TO PREVENT AND SOLVE NONPOINT SOURCE POLLUTION PROBLEMS IN WATERSHEDS .. 4-1

The EPA Watershed Approach	4-2
Cumulative Effects	4-3
Definition	4-3
The Importance of Considering and Analyzing Cumulative Effects	4-4
Problems in Cumulative Effects Analysis	4-5
Approaches to Cumulative Effects Analysis	4-7
1. EPA The Synoptic Approach	4-8
Synoptic Indices	4-8
Landscape Indicators	4-9
2. Washington State Watershed Analysis	4-9
3. Water Resources Evaluation of Nonpoint Silvicultural Sources (WRENSS) ..	4-9
4. California Department of Forestry Questionnaire	4-10
5. Phased Approach to Cumulative Effects Assessment	4-10
Forest Watershed Management: An Example	4-13
1. Inventory Basic Watershed Resources	4-13
2. Apply Best Management Practices	4-13
3. Monitor and Analyze Results	4-14

CHAPTER 5: MONITORING AND TRACKING TECHNIQUES	5-1
Overview	5-1
Monitoring Program Fundamentals	5-2
Monitoring BMP Implementation	5-4
Monitoring BMP Effectiveness	5-5
Importance of BMP Monitoring	5-6
Quality Assurance and Quality Control	5-6
Definitions of Quality Assurance and Quality Control	5-6
Importance of Quality Assurance and Quality Control Programs	5-6
EPA Quality Policy	5-7
Review of State Management Practice Monitoring Programs	5-7
Objectives of the Audits	5-7
Criteria Used to Choose the Audit Sites	5-8
Geographic Distribution	5-9
Time Since Harvest	5-9
Minimum Size	5-9
Proximity to Watercourse	5-10
Representation of Ownership	5-10
Randomness	5-10
Audit Focus: BMP Implementation and BMP Effectiveness	5-10
Number of Sites Investigated	5-10
Number of BMPs Evaluated	5-11
Composition of the Investigation Teams	5-11
BMP Implementation and Effectiveness Rating Systems	5-12
Audit Results	5-12
EPA Recommendations for Forestry Practice Audits	5-13
Volunteer Water Monitoring	5-14
Volunteer Monitoring Resources	5-15
Best Management Practices Evaluation Program: U.S. Forest Service, Pacific Southwest Region	5-16
Important Points to Note About the BMPEP	5-18
REFERENCES	R-1
GLOSSARY	G-1
APPENDICES	
Appendix A: EPA Forestry Resources	A-1
Appendix B: Sources of Technical Assistance	B-1
Appendix C: Forest Management Certification Programs	C-1
Appendix D: Non-Industrial Private Forest (NIPF) Management	D-1
Appendix E: State and Private Forestry Programs	E-1

FIGURES

Figure 1-1. Timberland ownership by region	1-10
Figure 1-2. Forested lands in the United States	1-11
Figure 2-1. Distribution of the cost of regulatory programs among different groups in representative states	2-22
Figure 3-1. Comparison of sediment concentrations in runoff from various forest conditions to drinking water standard	3-8
Figure 3-2. An example of laying out sample road systems for comparison purposes	3-11
Figure 3-3. Maximum recommended stable angles for (a) backslopes and (b) fill slopes	3-13
Figure 3-4. Alternative water crossing structures	3-15
Figure 3-5. Calculation of slope—an important step in determining SMA width	3-18
Figure 3-6. Mitigation techniques used for controlling erosion and sediment to protect water quality and fish habitat	3-28
Figure 3-7. Illustration of road structure terms	3-29
Figure 3-8. Types of road surface shape	3-29
Figure 3-9. Comparison of sedimentation rates (as tons of sediment in runoff per acre per inch of rainfall) from different forest road surfaces	3-31
Figure 3-10. Percent reduction in sediment runoff from a forest road surface with different treatments	3-31
Figure 3-11. Sediment yield from plots using various forms of ground covering	3-32
Figure 3-12. Culvert conditions that block fish passage	3-35
Figure 3-13. Multiple culverts for fish passage in streams that have a wide range of flows	3-35
Figure 3-14. Broad-based dip installation	3-41
Figure 3-15. Typical road profiles for drainage and stability	3-42
Figure 3-16. Design and installation of relief culvert	3-43
Figure 3-17. Details of installation of open-top and pole culverts	3-44
Figure 3-18. Grading and spacing of road turnouts	3-44
Figure 3-19. Sediment trap constructed to collect runoff from ditch along cutslope	3-45
Figure 3-20. Brush barrier placed at toe of fill to intercept runoff and sediment	3-46
Figure 3-21. Silt fence installation	3-46
Figure 3-22. Protective filter strip maintained between road and stream to trap sediment and provide shade and streambank stability	3-47
Figure 3-23. Details of hay bale installation, used to prevent sediment from skid trails and roads from entering surface waters	3-48

Figure 3-24. Portable bridge for temporary stream crossing	3-50
Figure 3-25. A stream ford. Hard and stable approaches to a ford are necessary	3-50
Figure 3-26. Design and installation of pipe culvert at stream crossing	3-51
Figure 3-27. Proper installation of culvert in the stream is critical to preventing plugging or undercutting	3-52
Figure 3-28. Procedure for installing culvert when excavation in channel section of stream could cause sediment movement and increase turbidity	3-53
Figure 3-29. Details of ice bridge construction for temporary stream crossing in winter	3-54
Figure 3-30. Road-related storm damage by type in the Detroit Ranger District	3-62
Figure 3-31. Install visible traffic barriers where appropriate to prevent off-road vehicle and other undesired disturbance to recently stabilized roads	3-66
Figure 3-32. Construct trails using the same drainage structures as closed forest roads ...	3-66
Figure 3-33. Broad-based dips reduce the potential for erosion	3-67
Figure 3-34. General large woody debris stability guide based on Salmon Creek, Washington	3-75
Figure 3-35. Typical cable yarding operation	3-77
Figure 3-36. Common pattern of shovel logging operations	3-78
Figure 3-37. Balloon harvesting practices on a steep slope	3-79
Figure 3-38. Deposited, suspended, and total sediment losses in experimental watersheds during water years 1976 and 1977 for various site preparation techniques	3-82
Figure 3-39. Predicted erosion rates using various site preparation techniques for physiographic regions in the southeastern United States	3-83
Figure 3-40. Erosion rates for site preparation practices in selected land resource areas in the Southeast	3-83
Figure 3-41. Sediment loss (kg/ha) in stormflow by site treatment from January 1, to August 31, 1981	3-84
Figure 3-42. Nutrient loss (kg/ha) in stormflow by site treatment from January 1, to August 31, 1981	3-84
Figure 3-43. Comparison of the effectiveness of seed, fertilizer, mulch, and netting in controlling cumulative erosion from treated plots on a steep road fill in Idaho	3-94
Figure 3-44. Soil losses from a 35-foot-long slope	3-96
Figure 3-45. Establish buffer zones of appropriate width during aerial applications of forest chemicals to protect water quality, people, and animals	3-103
Figure 3-46. Comparison of impervious (a) and pervious (b) roadfill sections	3-115
Figure 3-47. Elements of a road crossing through a swamp wetland, cross section	3-116
Figure 4-1. Representation of MacDonald's process for assessing cumulative effects	4-11
Figure E-1. Ratings of the effectiveness of various types of programs for accomplishing specific forestry objectives	E-5

TABLES

Table 1-1.	Leading Pollutants and Sources Causing Impairment in Assessed Rivers, Lakes, and Estuaries	1-2
Table 1-2.	Miles of Rivers and Streams Affected by Sources	1-3
Table 2-1.	Advantages and Disadvantages of Stream Crossing Structures	2-11
Table 2-2.	Estimations of Overall Cost of Compliance with State Forestry BMP Programs by Program Type	2-20
Table 2-3.	Estimations of Implementation Costs by Management Measure in the Southeast and Midwest	2-21
Table 2-4.	Estimations of Construction and Implementation Costs for Individual BMPs, by Region	2-23
Table 3-1.	Comparison of the Effect of Conventional Logging System and Cable Miniyarder on Soil in Georgia	3-6
Table 3-2.	Recommended Minimum SMZ Widths	3-18
Table 3-3.	Recommendations for Filter Strip Widths	3-18
Table 3-4.	Storm Water Suspended Sediment Delivery for Treatments	3-20
Table 3-5.	Average Changes in Total Coarse and Fine Debris of a Stream Channel After Harvesting	3-20
Table 3-6.	Comparison of Effects of Two Methods of Harvesting on Water Quality	3-20
Table 3-7.	Average Estimated Logging and Stream Protection Costs per MBF	3-21
Table 3-8.	Cost Estimates (and Cost as a Percent of Gross Revenues) for Streamside Management Areas	3-22
Table 3-9.	Cost Effects of Three Alternative Buffer Strips	3-22
Table 3-10.	Goals of Two Main Types of LWD Projects	3-24
Table 3-11.	Effects of Several Road Construction Treatments on Sediment Yield in Idaho	3-26
Table 3-12.	Effectiveness of Road Surface Treatments in Controlling Soil Losses in West Virginia	3-31
Table 3-13.	Reduction in the Number of Sediment Deposits More Than 20 Feet Long by Grass and Forest Debris	3-32
Table 3-14.	Comparison of Downslope Movement of Sediment from Roads for Various Roadway and Slope Conditions	3-33
Table 3-15.	Effectiveness of Surface Erosion Control on Forest Roads	3-33
Table 3-16.	Cost Estimates (and Cost as a Percent of Gross Revenues) for Road Construction	3-38
Table 3-17.	Cost of Gravel and Grass Road Surfaces	3-38

Table 3-18. Costs of Erosion Control Measures in Idaho	3-38
Table 3-19. Sediment Loss Reduction from Reinforcement at Road Stream Crossings	3-53
Table 3-20. Comparison of Road Repair Costs for a 20-Year Period With and Without BMPs	3-60
Table 3-21. Analysis of Costs and Benefits of Watershed Treatments Associated with Roads	3-60
Table 3-22. Comparative Costs of Reclamation of Roads and Removal of Stream Crossing Structures	3-61
Table 3-23. Example of Recommended Water Bar Spacing by Soil Type and Slope	3-67
Table 3-24. Soil Disturbance from Roads for Alternative Methods of Timber Harvesting	3-71
Table 3-25. Soil Disturbance from Logging by Alternative Harvesting Methods	3-72
Table 3-26. Relative Effects of Four Yarding Methods on Soil Disturbance and Compaction in Pacific Northwest Clear-cuts	3-73
Table 3-27. Percent of Land Area Affected by Logging Operations	3-73
Table 3-28. Skidding/Yarding Method Comparison	3-73
Table 3-29. Costs Associated with Various Methods of Yarding	3-79
Table 3-30. Analysis of Two Management Schedules Comparing Cost and Site Productivity in the Southeast	3-85
Table 3-31. Site Preparation Comparison	3-85
Table 3-32. Comparison of Costs of Yarding Unmerchantable Material (YUM) vs. Broadcast Burning	3-86
Table 3-33. Range of Prescribed Fire Costs	3-90
Table 3-34. Economic Impact of Implementation of Proposed Management Measures on Road Construction and Maintenance	3-94
Table 3-35. Cost Estimates (and Cost as a Percent of Gross Revenues) for Seed, Fertilizer, and Mulch	3-94
Table 3-36. Estimated Costs for Revegetation	3-95
Table 3-37. Peak Concentrations of Forest Chemicals in Soils, Lakes, and Streams After Application	3-100
Table 3-38. Nitrogen Losses from Two Subwatersheds in the Umpqua Experimental Watershed	3-102
Table 3-39. Average Costs for Chemical Management.....	3-103
Table 3-40. Recommended Harvesting Systems by Forested Wetland Site	3-111
Table 3-41. Temporary Wetland Crossing Options	3-113
Table 3-42. Recommended Regeneration Systems by Forested Wetland Type	3-117

