

The Lower Rio Grande/Río Bravo Water Quality Initiative (LRGWQI):

September 22, 2015

National Coordinators Meeting

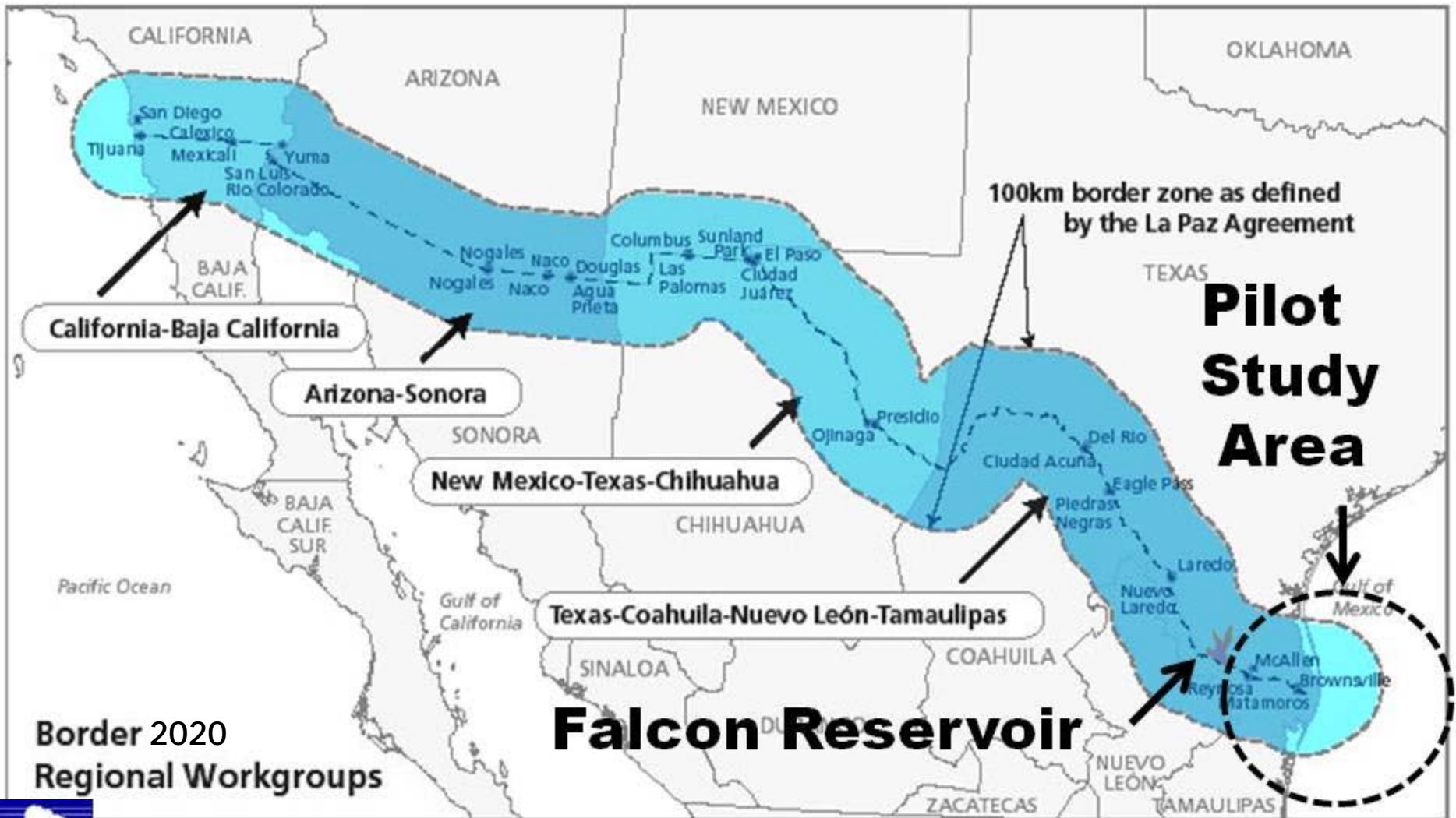
Water Policy Forum

Roger Miranda

Texas Commission on Environmental Quality

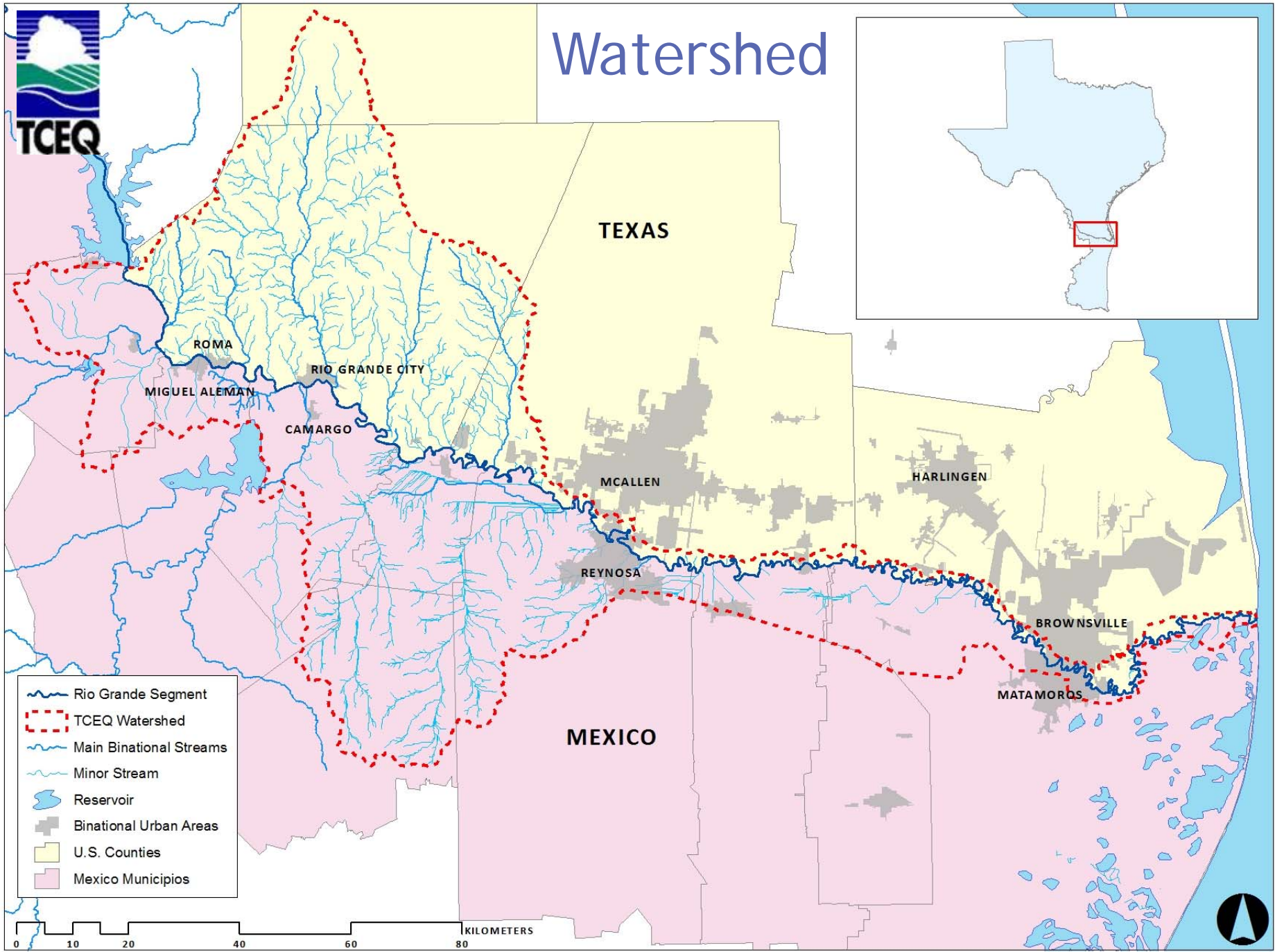
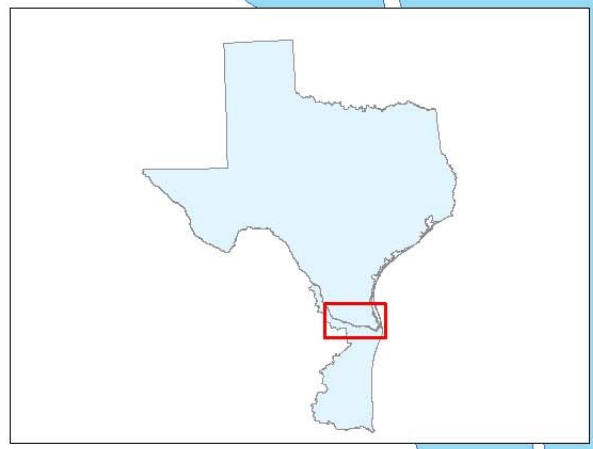


Pilot Study Area





Watershed

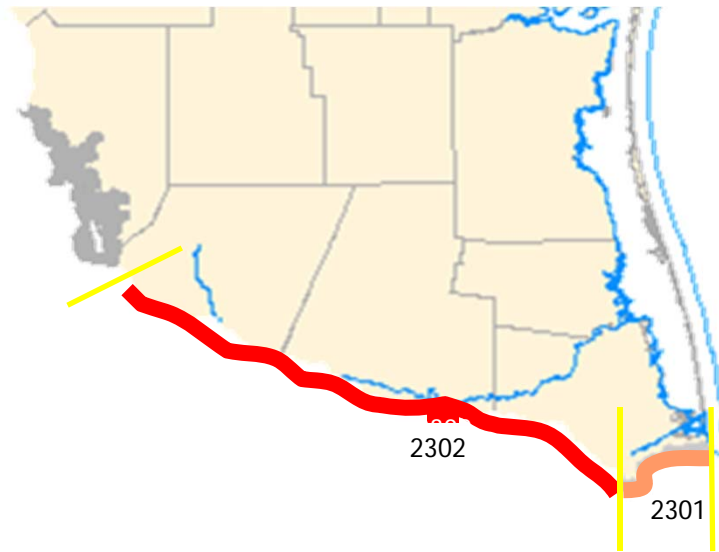


- Rio Grande Segment
- - - TCEQ Watershed
- Main Binational Streams
- Minor Stream
- Reservoir
- Binational Urban Areas
- U.S. Counties
- Mexico Municipios

0 10 20 40 60 80 KILOMETERS



What is wrong with the Lower Rio Grande/Rio Bravo?



Summary of Water Quality Assessment Results : Lower Rio Grande From TCEQ's 2012 Integrated Report

Segment Number	Segment Description	Impairment	Year Listed	Concerns
2302	Rio Grande Below Falcon Reservoir	Bacteria	1996	Ammonia Bacteria Nutrients Diss .Oxygen Mercury in Fish
2301	Rio Grande Tidal	NA	NA	Bacteria Nutrients





Structure **16**. Four large drain pipes on bank. Border Patrol mentioned this has “green stuff” discharging at night. Parts of pipes have fallen off. Two pipes discharging, the other 2 wet.



Structure **12**. Large drain cement structure with metal gates, which have a permanent rusted hole at bottom. Discharging.

(From Spring 2010 IBWC CRP Bacteria Characterization Study - Near Brownsville)



Synoptic Survey of Steady-State
Nonpoint Sources in Selected Areas
of the Lower Rio Grande/Río Bravo
IBWC - US Section, . February 2014

The Lower Rio Grande/Río Bravo Water Quality Initiative

- * Binational effort to restore and protect water quality in the Lower Rio Grande/Río Bravo
- * Conducted under the auspices of the International Boundary and Water Commission (IBWC)
- * Six agencies involved, two US federal agencies (IBWC, USEPA) and the TCEQ, two Mexican federal agencies (CONAGUA, CILA) and CEAT



LRGWQI Objectives

- Address current and future water quality issues
- Evaluate management strategies for point sources
- Evaluate other mechanisms and strategies to improve water quality under steady-state conditions, including salinity management
- Suggest implementation strategies

Technical Approach

- Binational Data Exchange
- Historical Data Review
- Identification of Data Gaps
- Data Collection
- Data Analysis and Modeling

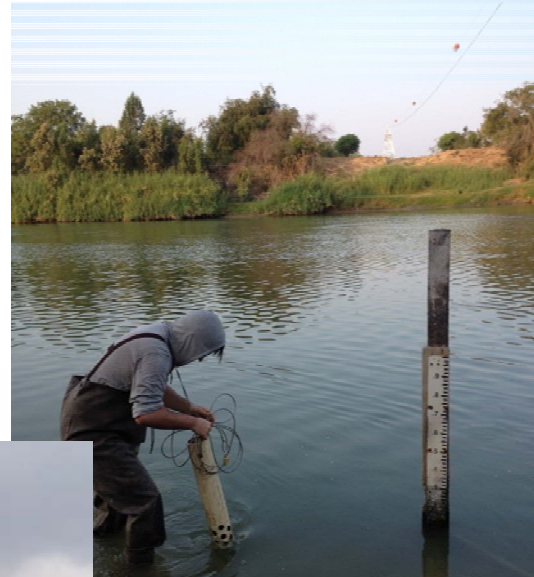
Capacity Building - Monitoring Methods



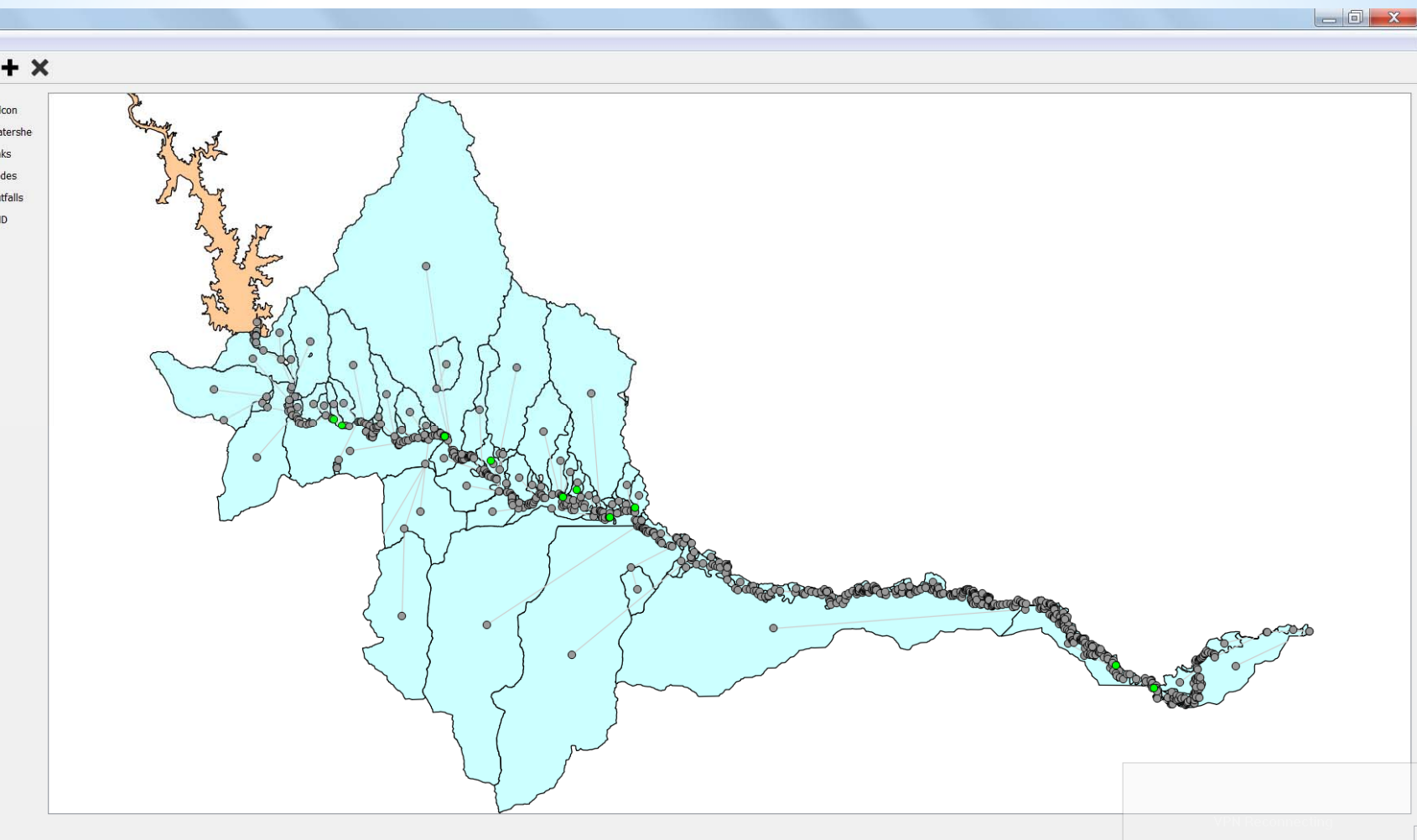
Monitoring Site Reconnaissance



Monitoring in 2014 and 2015



Modeling and Decision Support System Development



Roger Miranda

roger.miranda@tceq.texas.gov

(512)239-6278

<http://www.tceq.texas.gov/waterquality/tmdl>

