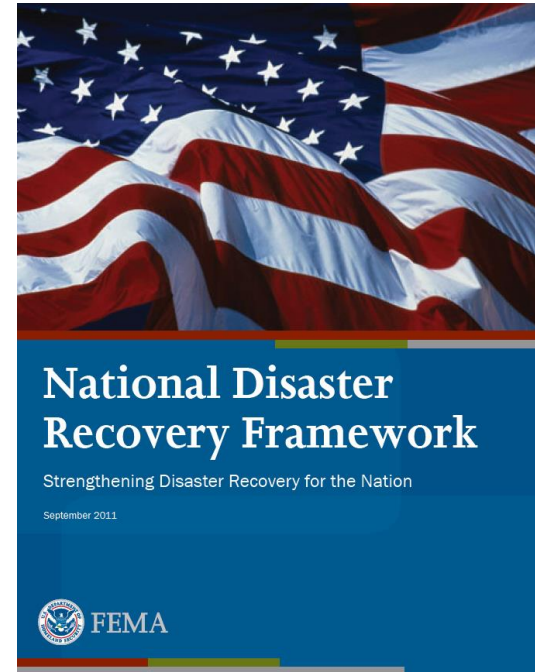


National Disaster Recovery Framework

Charlie Cook
Region 6
Community Planning



FEMA

HURRICANE KATRINA



FEMA

Region 6

Blanco River Basin



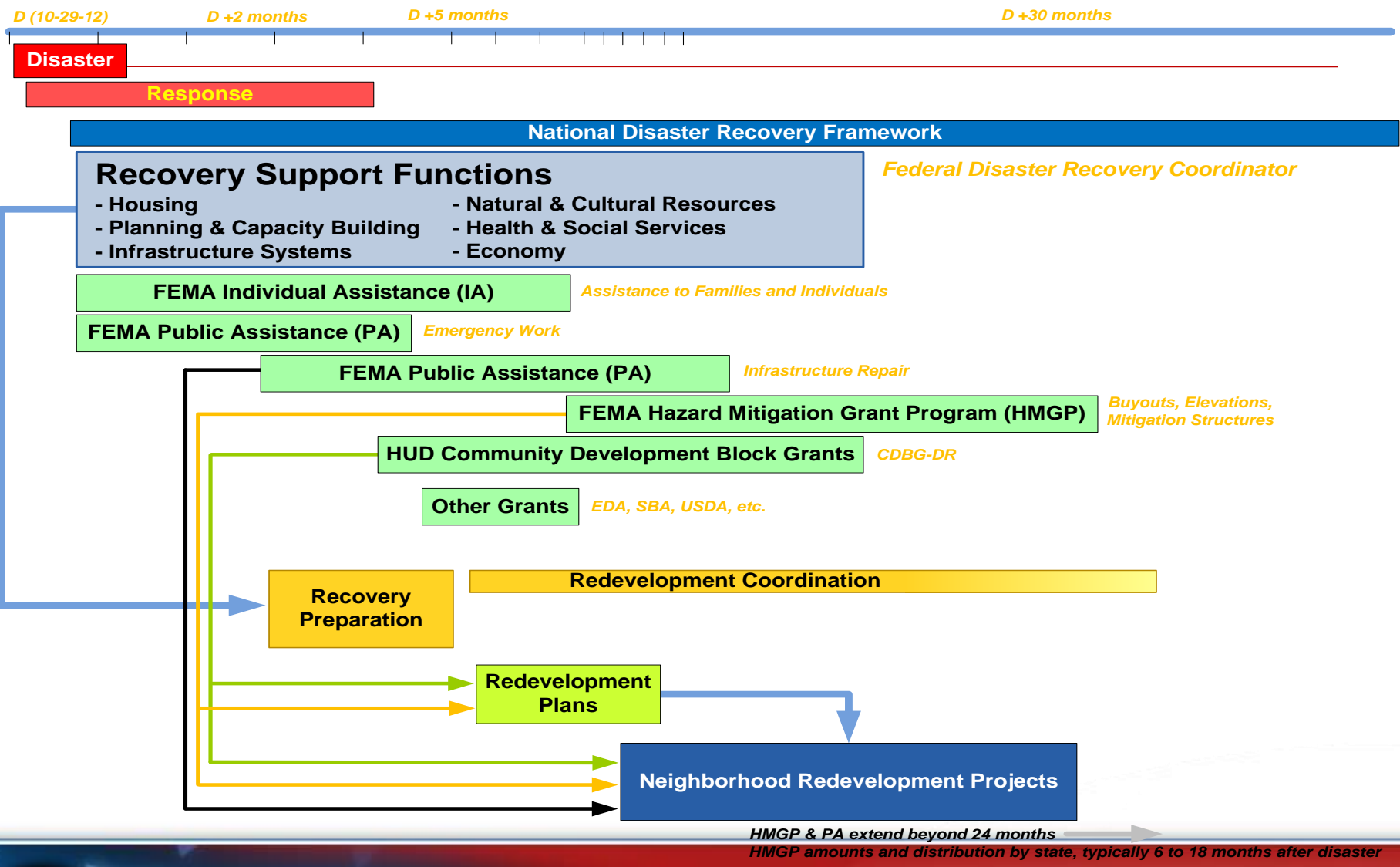
FEMA

Washita River Basin



FEMA

Recovery Planning Schematic Timeline



FEMA

Public Assistance Grant Program



FEMA

Public Assistance Mitigation

- **Mitigation measures in conjunction with the repair of disaster-damaged facilities eligible for Public Assistance Program funding.**
- **Mitigation funding opportunities:**
 - **15% of total eligible costs**
 - **Up to 100% of certain mitigation measures listed in RP9526.1, Appendix A**
 - **For measures that exceed the above costs, the Grantee or subgrantee must demonstrate through an acceptable benefit/cost analysis methodology that the measure is cost effective.**



Alternative Procedures Pilot Program

- **Grants Based on Fixed Estimates**
- **Acceptance of Subgrantee Cost Estimates**
- **Referral of Cost Estimates to Expert Panel**
- **Consolidated Subgrants**
- **Elimination of Alternate Project Penalty**
- **Use of Excess Funds**

Subgrantee is responsible for costs above the fixed estimate

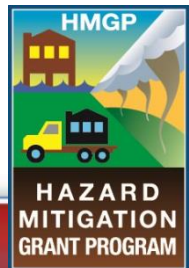
Subgrantee has flexibility in use of funds within the fixed estimate



FEMA

HMGP Overview

- **HMGP may become available after a Presidential Major Disaster Declaration**
- **Provides 75% federal funding to implement long-term, cost-effective mitigation measures**
- **Applicants set application priorities prior to submitting applications to FEMA**



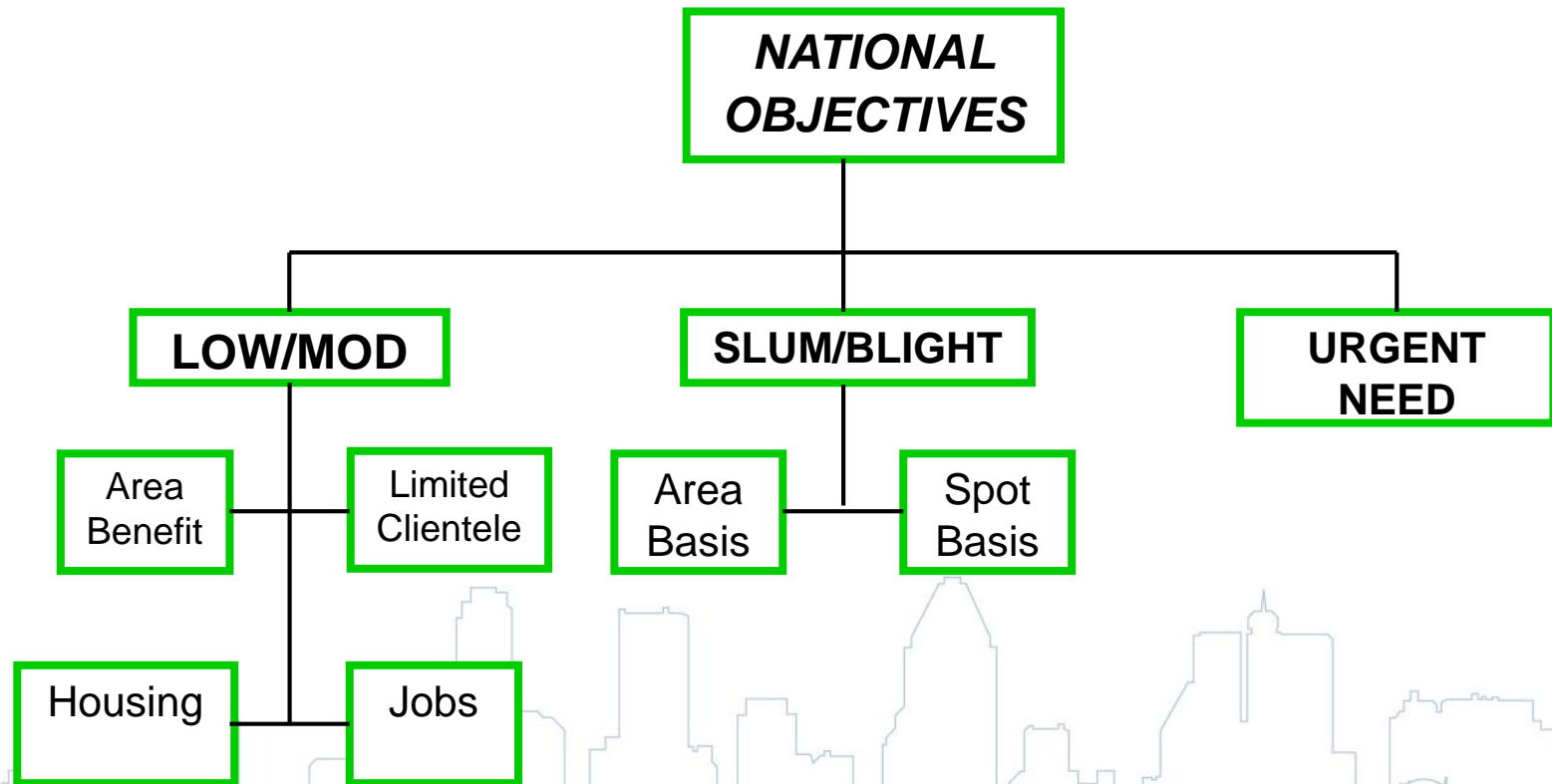
FEMA



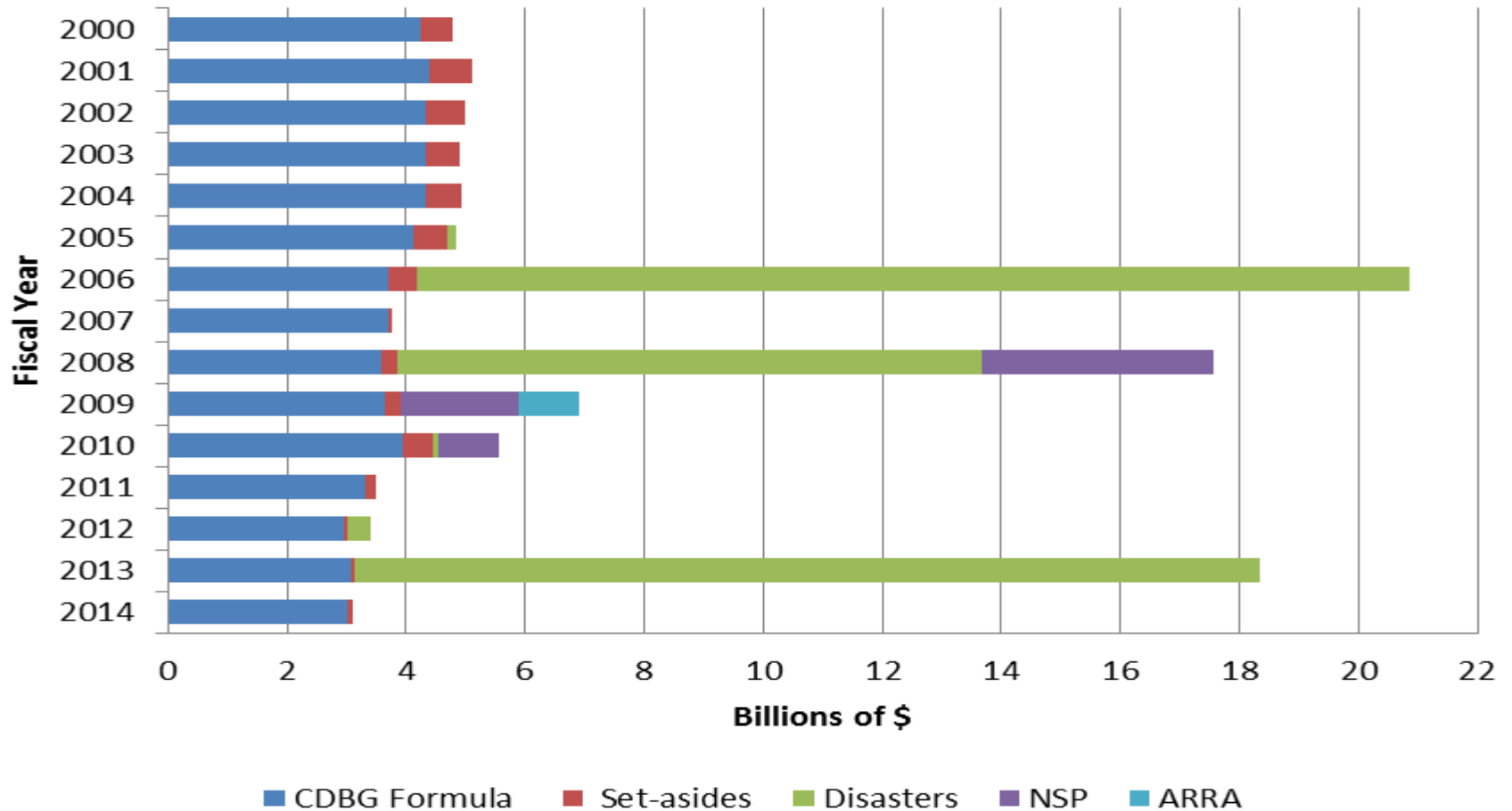
CDBG Disaster Recovery



NATIONAL OBJECTIVES



CDBG EXPENDITURES



FEMA

Plaquemines Parish



FEMA

Region 6

Louisiana CDBG allocation

Allocations	Total Allocation	% of Allocation
St. John the Baptist Parish	\$32,674,000	50.8%
Plaquemines Parish	\$16,953,000	26.3%
FEMA Cost-Share	\$5,886,000	9.1%
LMI HMA Cost-Share	\$4,446,000	6.9%
State Administration, Planning and Program Delivery	\$3,320,000	5.2%
Parish Recovery Priority Projects	\$1,100,000	1.7%
Total	\$64,379,000	100.0%



FEMA



FEMA

Region 6

Jamestown bridge



FEMA

Region 6

Jamestown bridge after the storm



FEMA

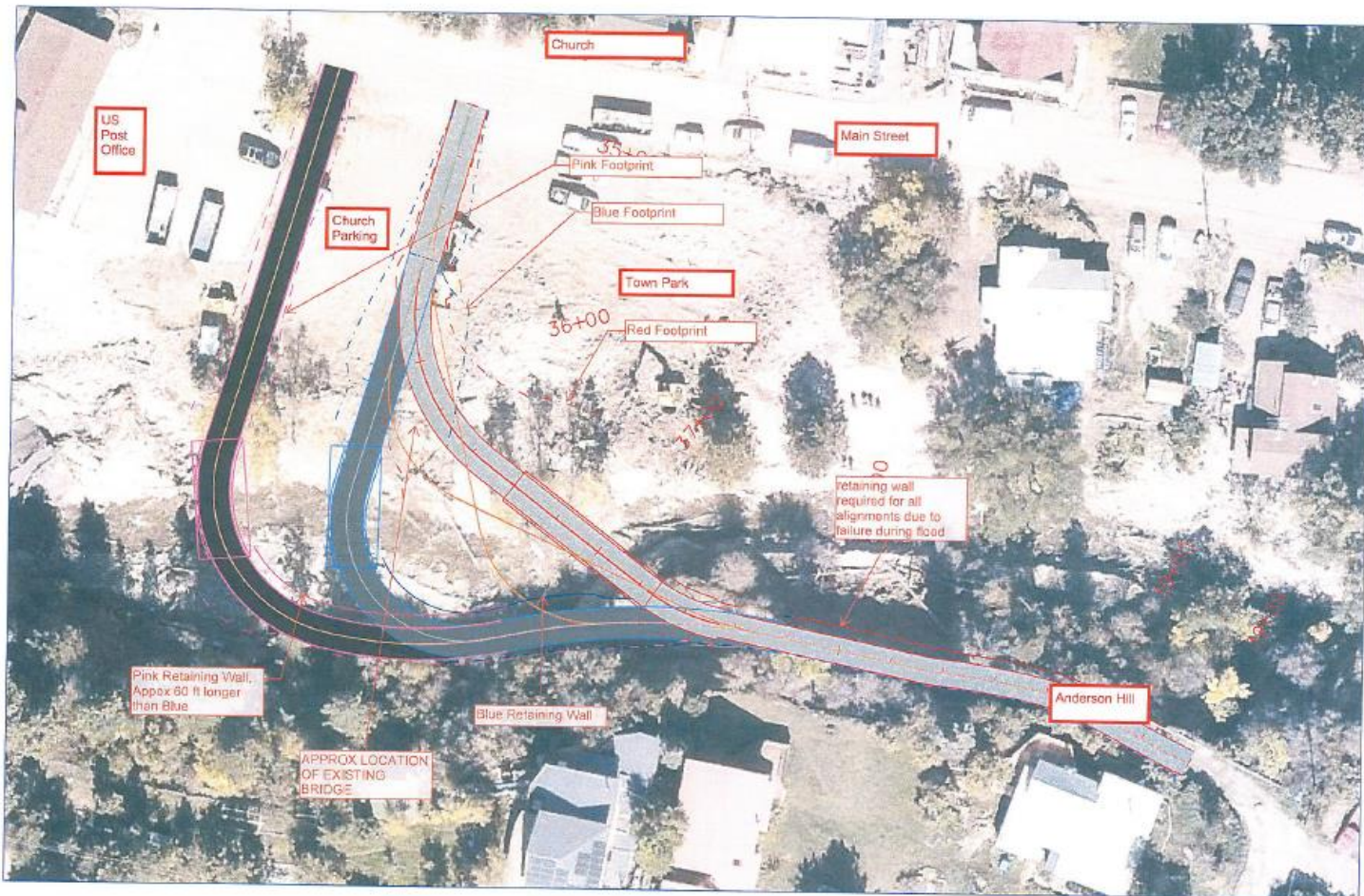
Jamestown community meeting



FEMA

Region 6

Jamestown Colorado



FEMA

Region 6

Main Street Vilonia, Arkansas



FEMA

Main Street Vilonia, Arkansas



FEMA

VILONIA ARKANSAS

Tornadoes, Floods, & Severe Storm Event on April 27, 2014

- **12 fatalities**
- **91 injuries**
- **71% of businesses were directly impacted, many were destroyed.**



FEMA

VILONIA ARKANSAS

- **Vilonia's local government is small, including a part time mayor.**
- **population of 4,226 (2013 U.S. Census Bureau estimate), Vilonia is a “bedroom community,” or a commuter hub to nearby Conway and Little Rock.**
- **population quadrupled between 1940 and 1990 and then doubled again during the 1990s.**



FEMA

Marty Knight



FEMA



FEMA

Vilonia Development



Pre-Existing Site Condition **Vilonia, Arkansas**



FEMA

Dream big



FEMA

FEMA



EDA

**Arkansas
Department
of Emergency
Management**

**Arkansas
Economic
Development
Corporation**

**City of
Vilonia**
Mayor
City Council
Planning
Commission
Rebuild Vilonia

Churches

Schools

Utilities

Businesses

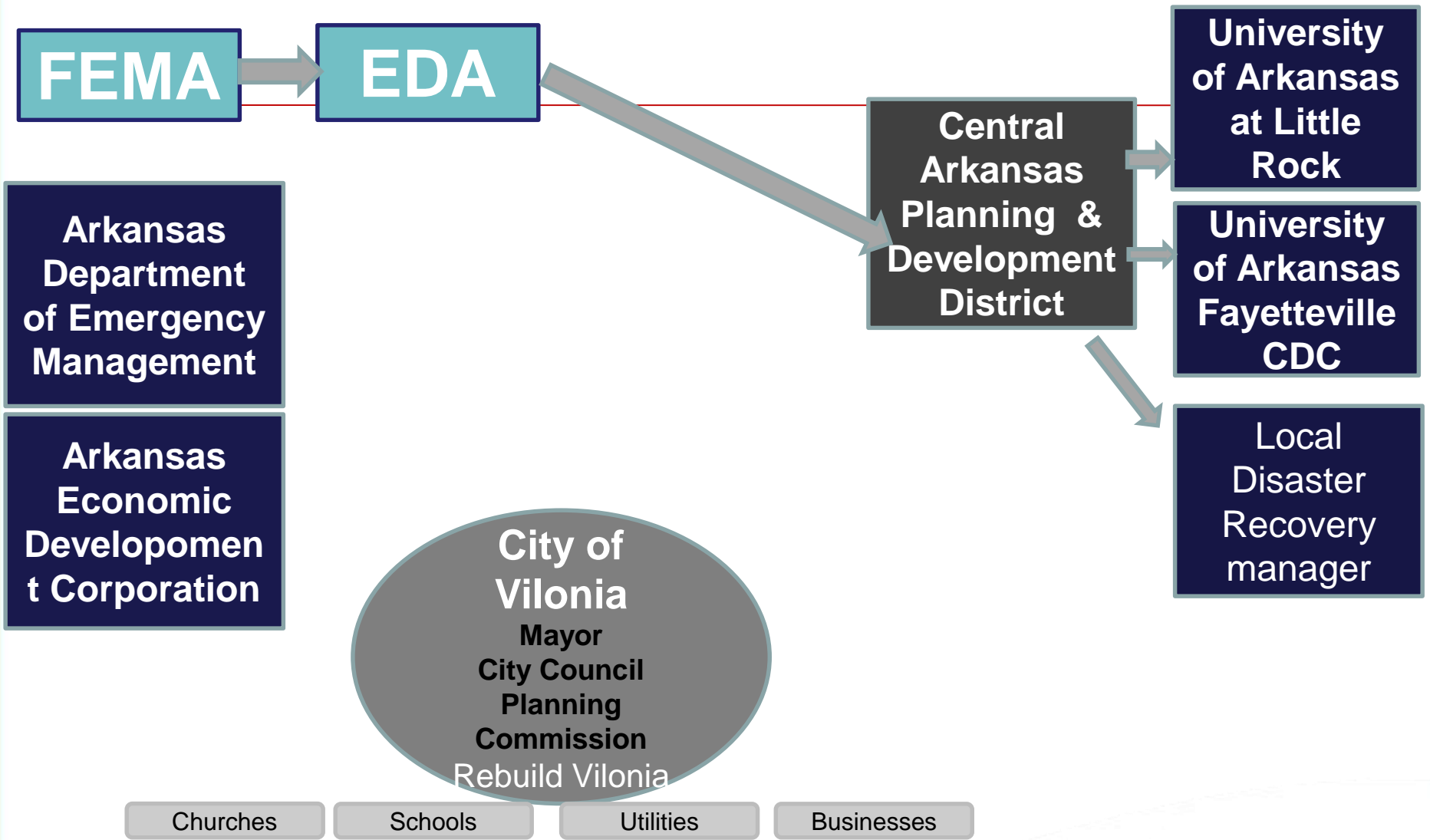


FEMA

ECONOMIC DEVELOPMENT ADMINISTRATION

- \$1.1 million grant in Mayflower, Arkansas for the construction of water and sewer improvements
- \$300,000 grant
 - Hire a Disaster Coordinator
 - Conduct pre- and post-disaster recovery planning for Faulkner County

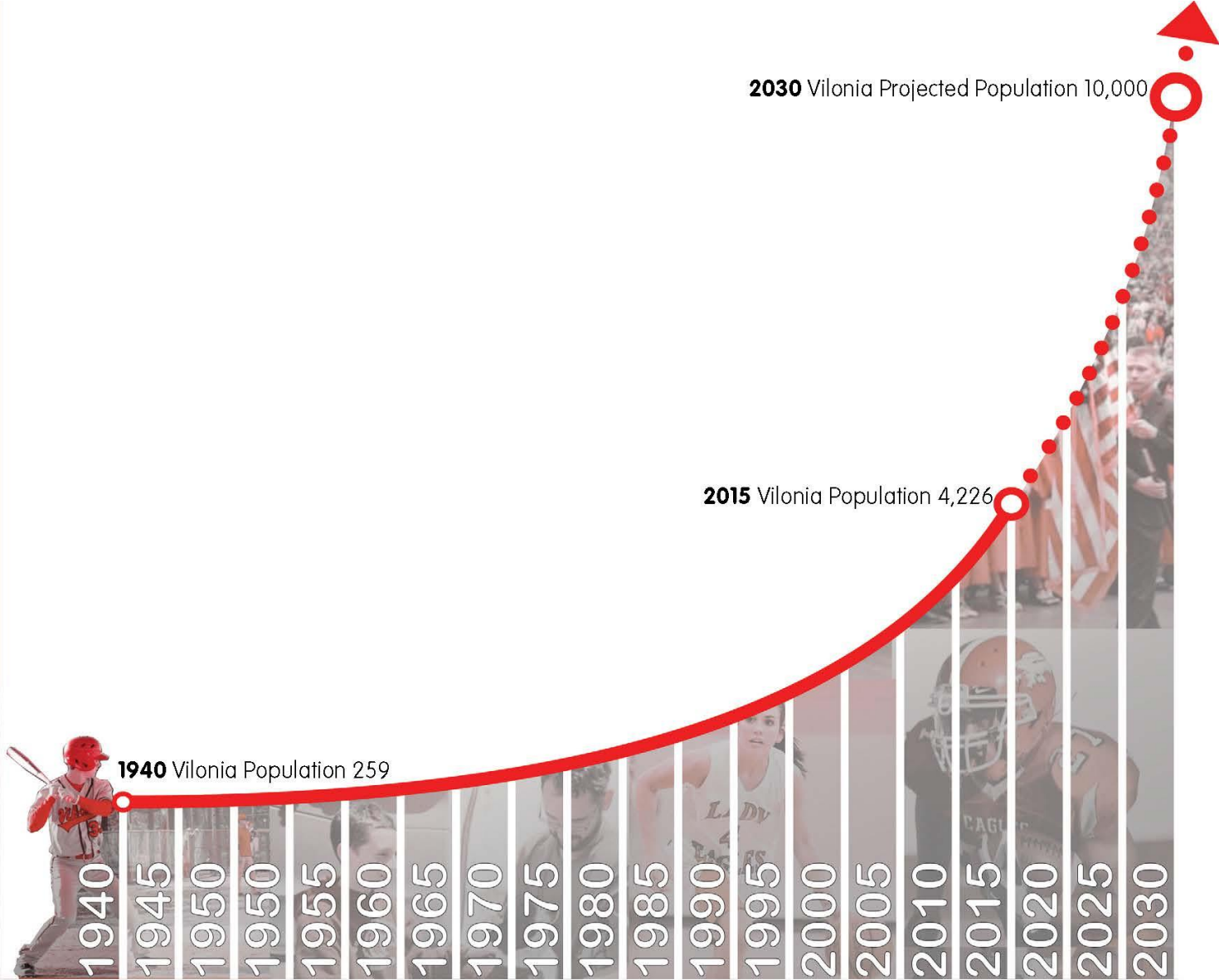




FEMA

Vilonia as Future-Oriented 1

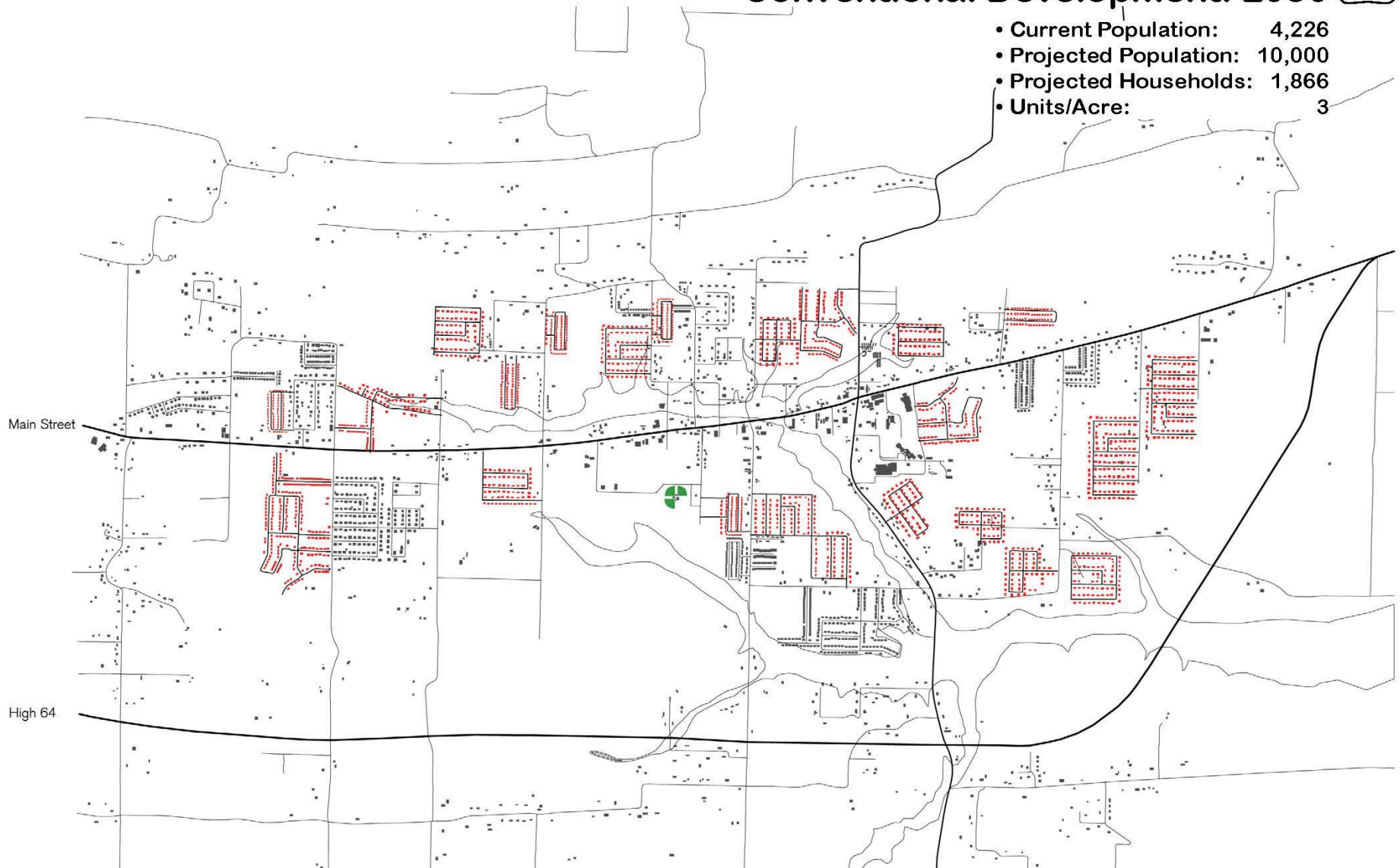
shaping the type of place in which you would like to live



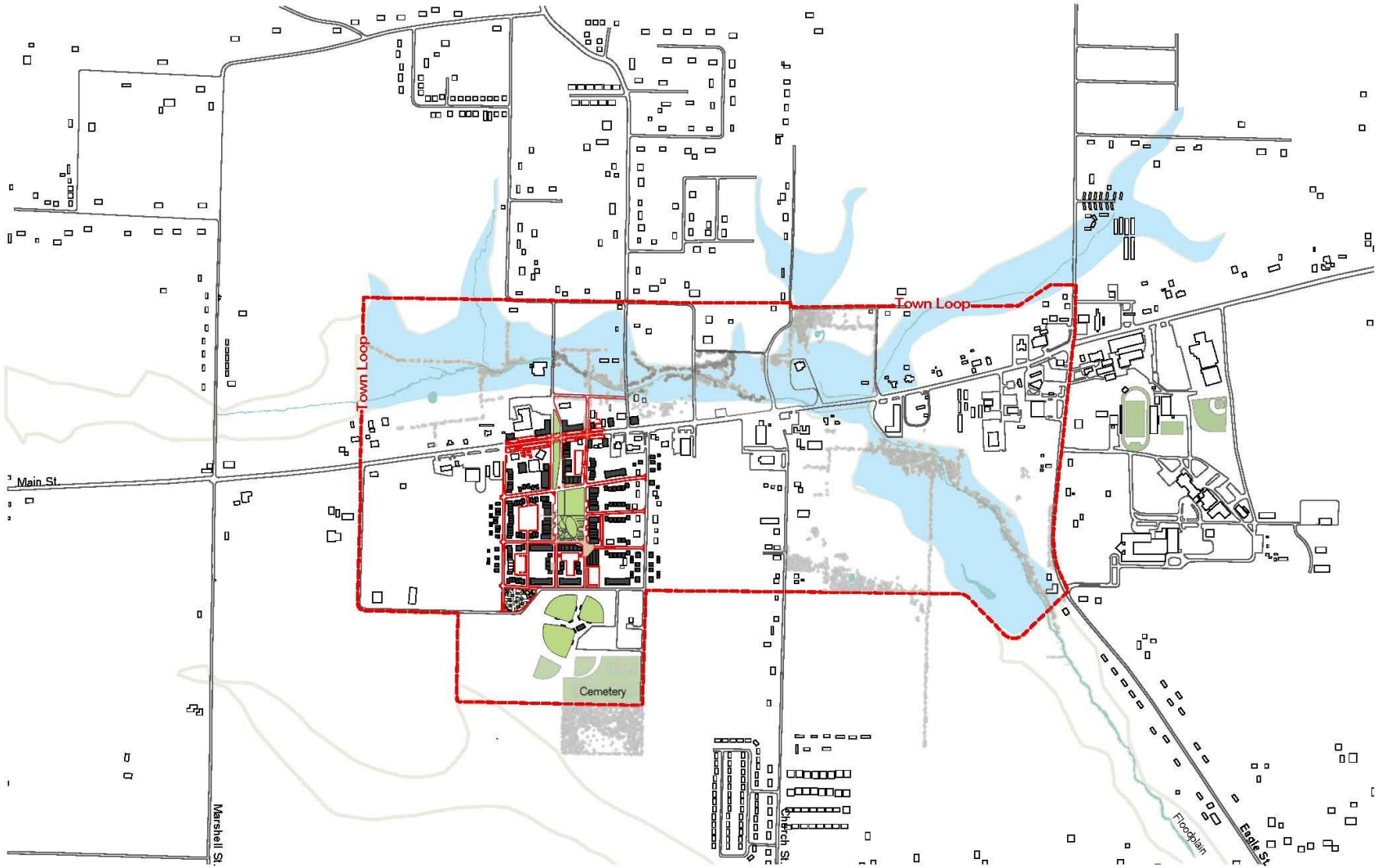
Conventional Development: 2030

1

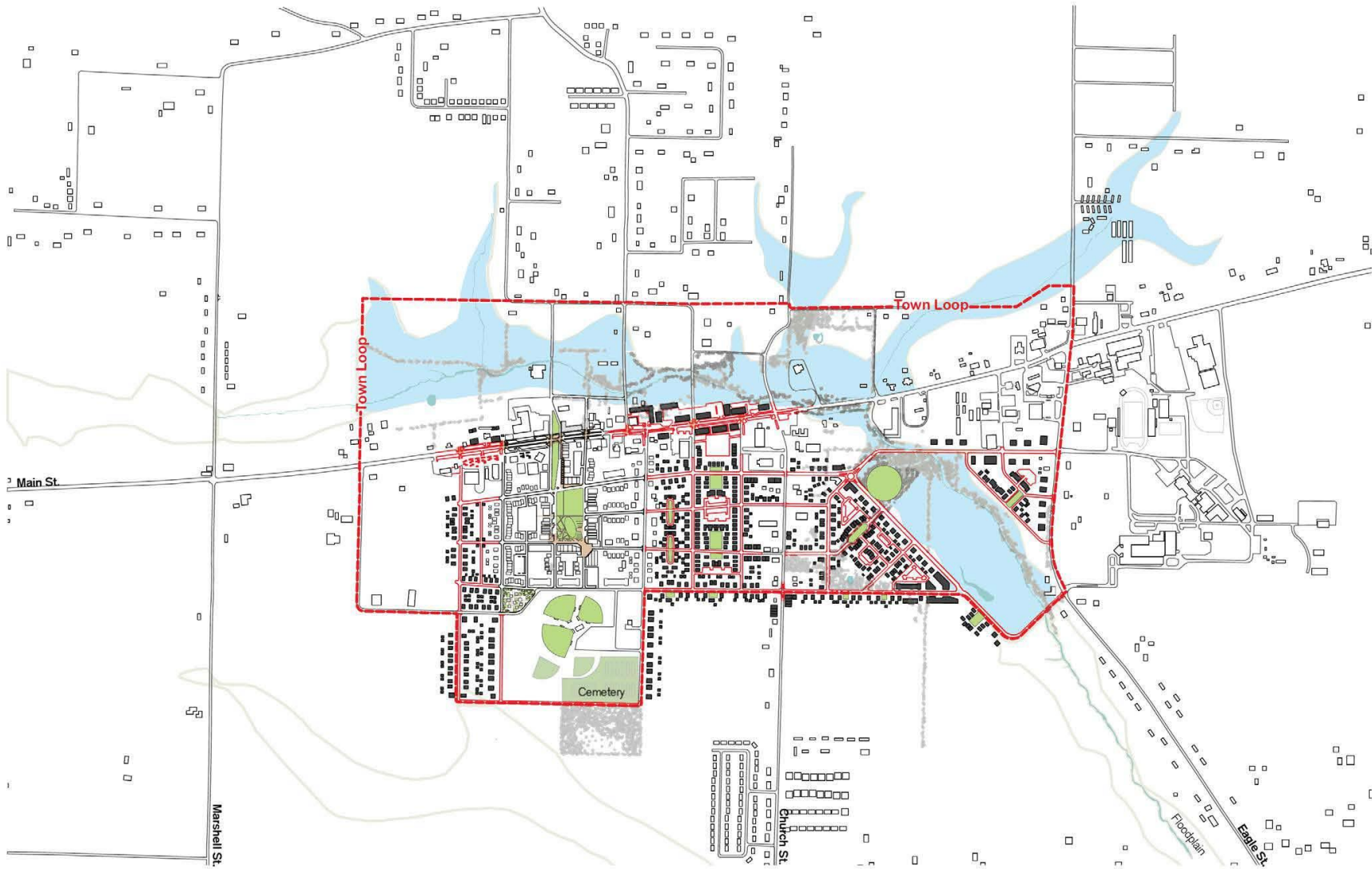
- Current Population: 4,226
- Projected Population: 10,000
- Projected Households: 1,866
- Units/Acre: 3



Town Plan: Phase 1

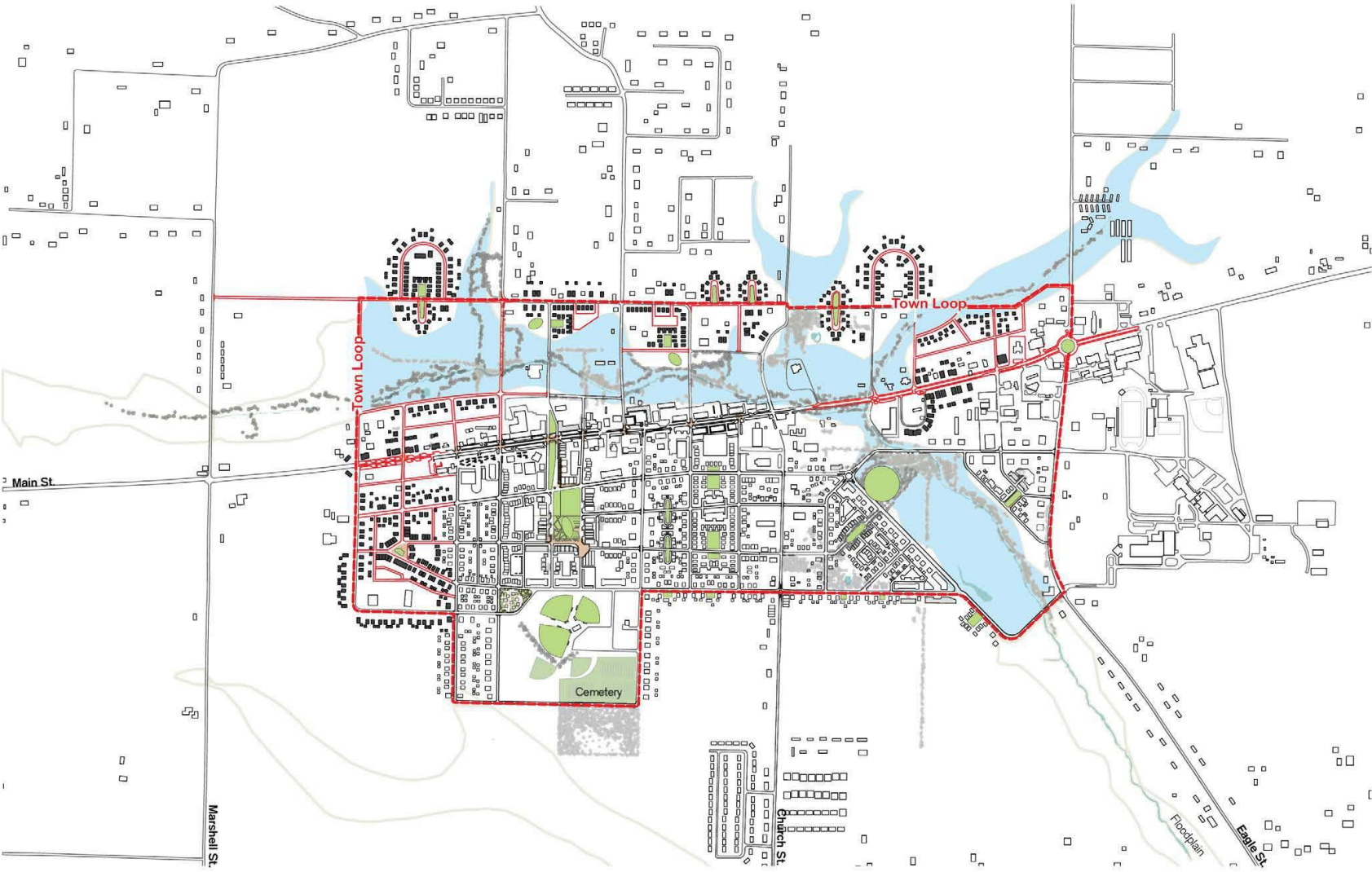


Expansion of Downtown Neighborhoods: Phase 2



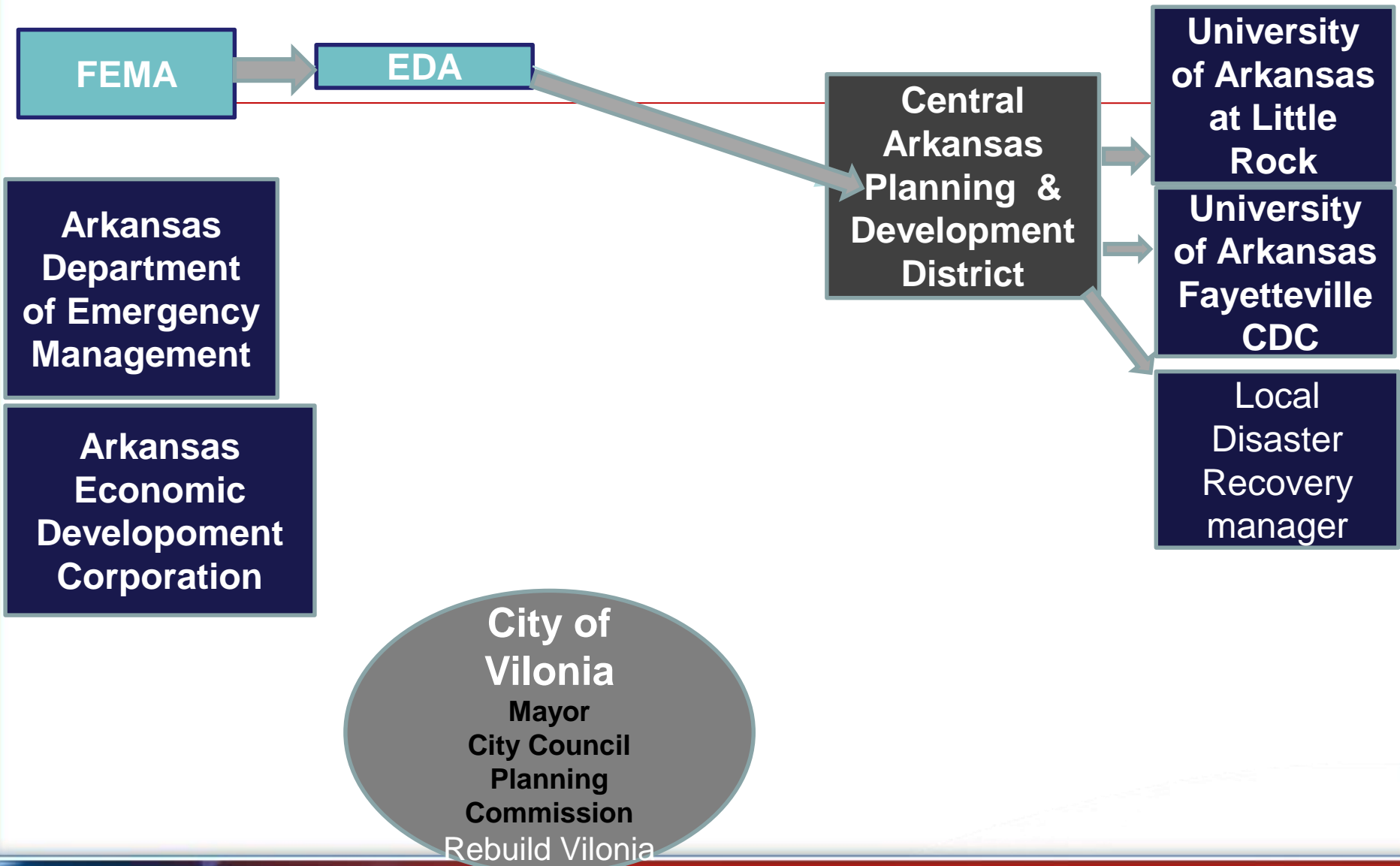
Completion of Town Loop: Phase 3

1



Making a Town Square **1**





FEMA

Churches

Schools

Utilities

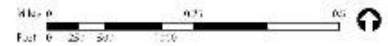
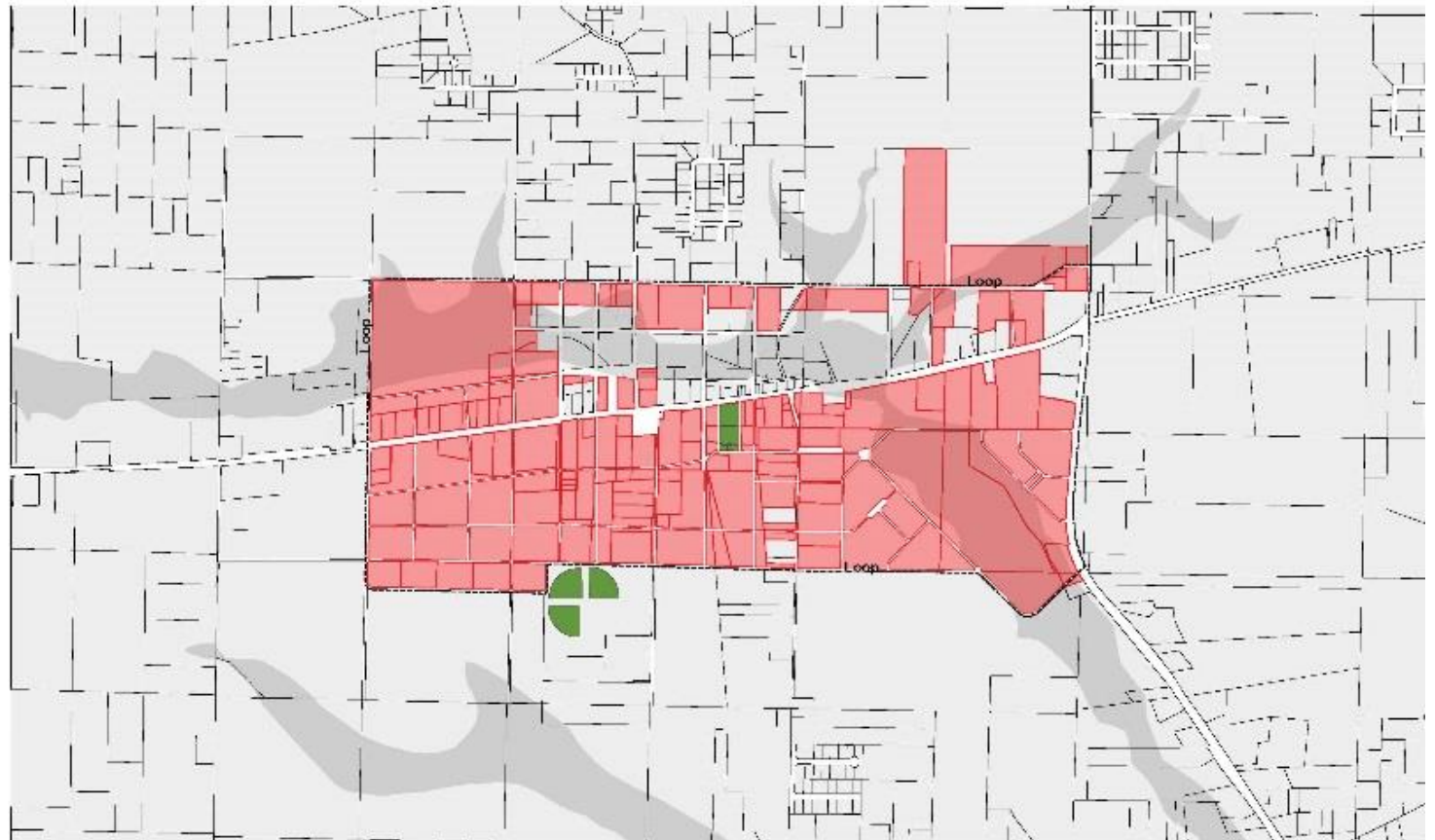
Businesses

Vilonia 2030

University of Arkansas Community Design Center
Vilonia, Arkansas

Existing Property Parcels and Proposed Town Loop

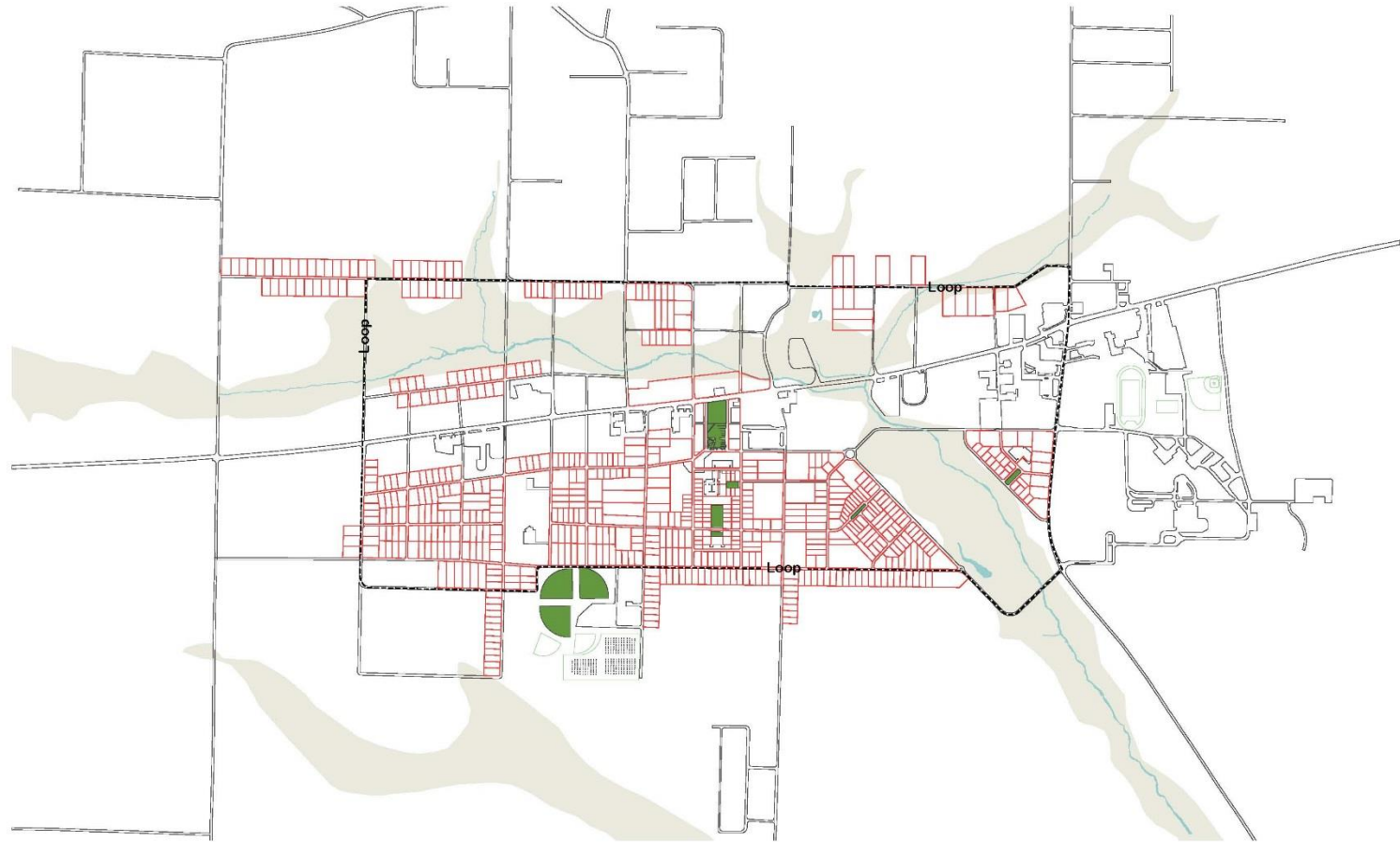
- Existing Parcels, No Change
- New / Modified Parcels



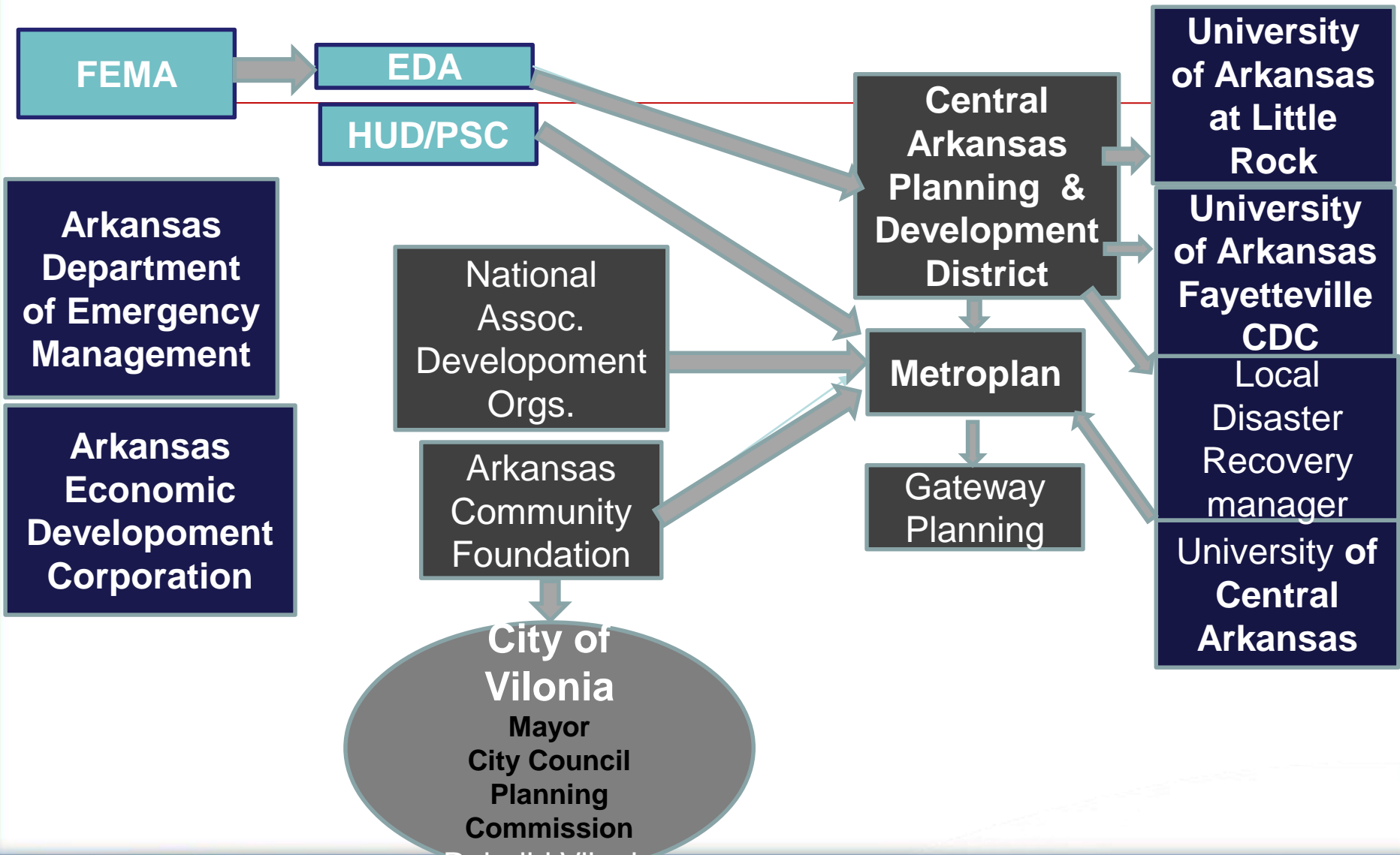
FEMA

New Property Layout Based on the Town Loop Plan

 New Property Parcelization



FEMA



City of Vilonia
 Mayor
 City Council
 Planning Commission

Rebuild Vilonia



FEMA

Churches

Schools

Utilities

Businesses

Questions?

Charlie Cook
Community Planning &
Capacity Building Coordinator

Charles.Cook4@FEMA.DHS.Gov
940-268-9952



FEMA