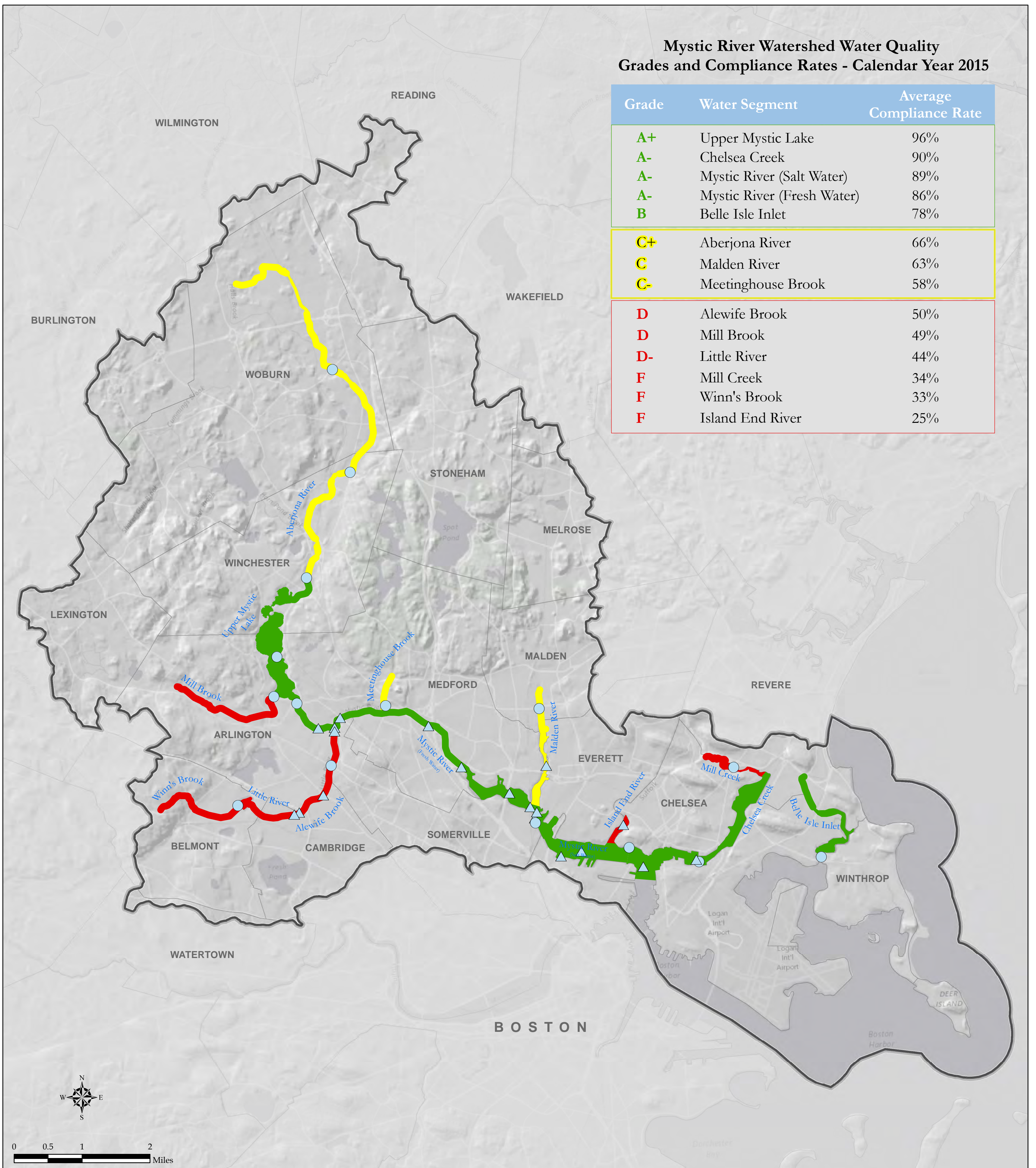


## Mystic River Watershed Water Quality Grades and Compliance Rates - Calendar Year 2015

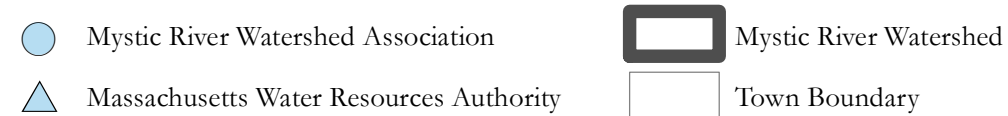
Grade	Water Segment	Average Compliance Rate
A+	Upper Mystic Lake	96%
A-	Chelsea Creek	90%
A-	Mystic River (Salt Water)	89%
A-	Mystic River (Fresh Water)	86%
B	Belle Isle Inlet	78%
C+	Aberjona River	66%
C	Malden River	63%
C-	Meetinghouse Brook	58%
D	Alewife Brook	50%
D	Mill Brook	49%
D-	Little River	44%
F	Mill Creek	34%
F	Winn's Brook	33%
F	Island End River	25%



### Average Compliance Rates for Swimming and Boating Standards



### Monitoring Points



# 2015 Mystic River Watershed Report Card

(based on 2013-2015 bacterial data)

