



NEW HAVEN GREEN MAP

3rd Edition

Courtesy of Mayor John DeStefano, Jr., the New Haven Urban Resources Initiative, the Hixon Center for Urban Ecology at the Yale School of Forestry and Environmental Studies, and the New Haven City Plan Department

NEW HAVEN WATERSHEDS

Do you live in a watershed? The answer for everyone is, "Yes", because anyone who lives on land lives in a watershed. Watersheds are the area of land that water flows over or through to a common water body.

The City of New Haven lies within the watersheds of three rivers and several smaller streams. The West River watershed, the Mill River watershed and the Quinnipiac River watershed extend far beyond the City boundaries, with the Quinnipiac, the largest, extending all the way north to town of Farmington in Hartford County.



Park Ranger Dan Barvir paddles the Mill River with East Rock Elementary School students.



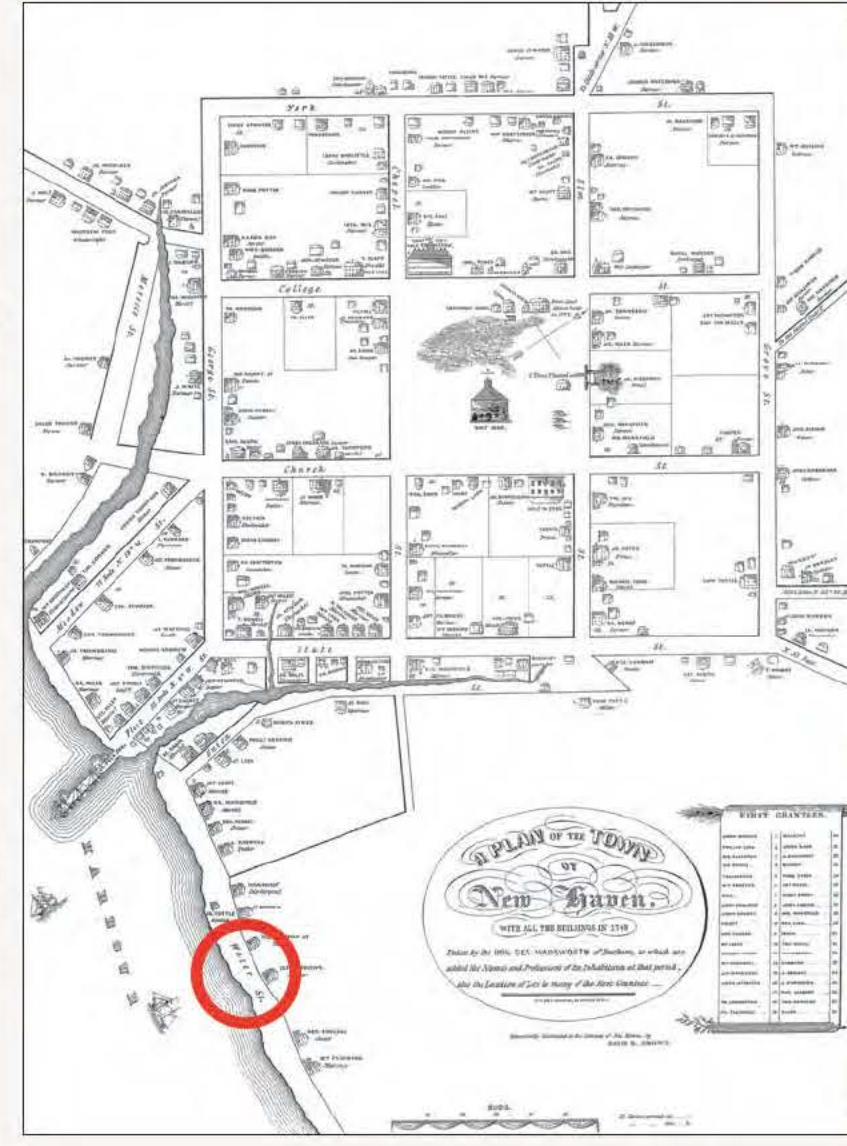
The schooner Quinnipiac sails past Lighthouse Point.



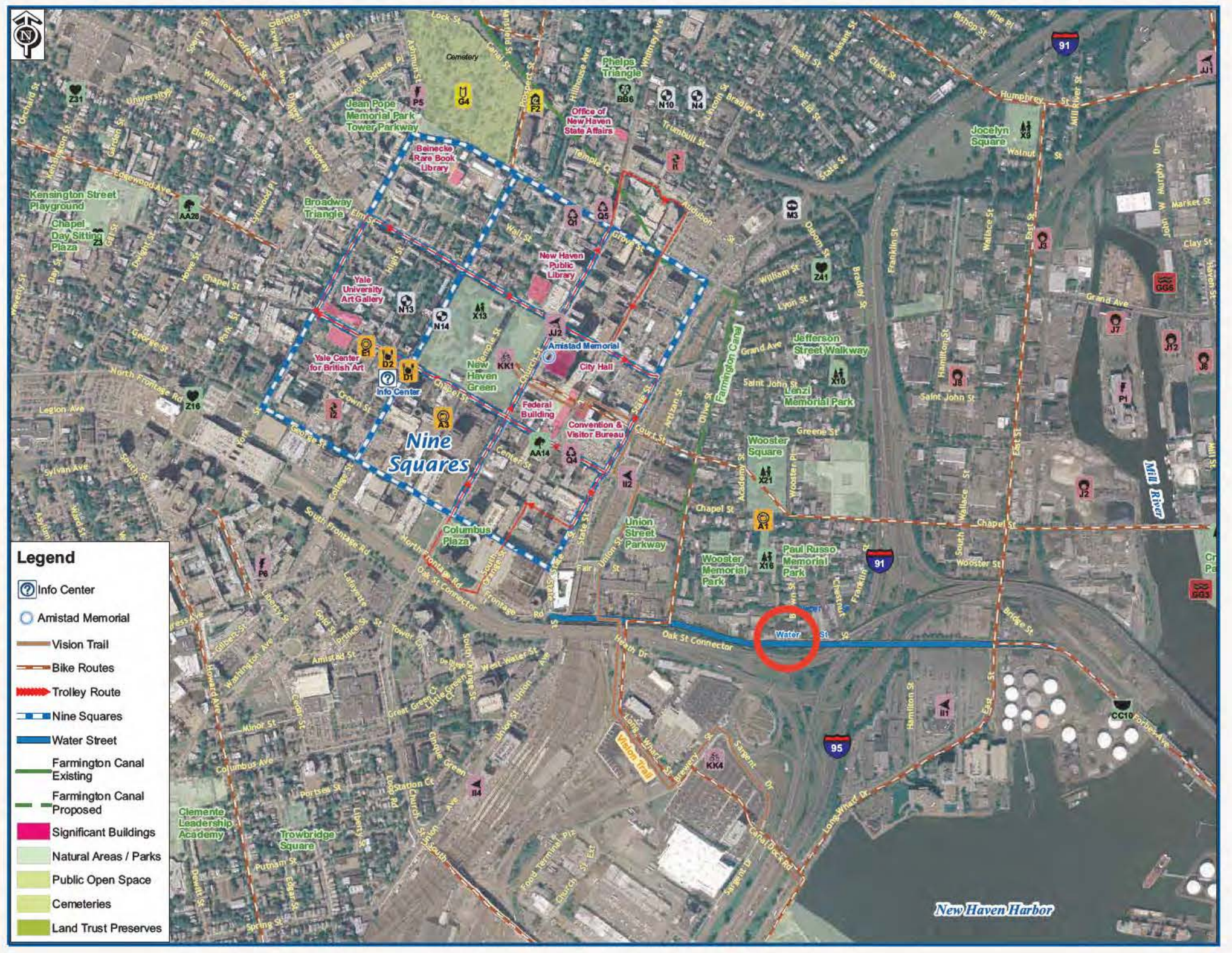
DOWNTOWN NEW HAVEN PAST AND PRESENT

Downtown New Haven still embodies the first settlers' original design. The seventeenth century Puritan founders chose a clearly organized, nine square plan, with streets and house lots surrounding a Public Square.

For three hundred years, the Green and waterfront were very closely connected. This relationship was lost due to the post World War II interstate highway system and a large harbor dredging project.



Right: 1748 Plan of New Haven. Far Right: Satellite image of downtown New Haven today.



Need More Green Maps?

The New Haven Green Map, 3rd edition, can be downloaded from the internet at www.cityofnewhaven.com.

The Green Map System

The Green Map System is a globally connected eco-cultural program for community sustainability. Green Maps (both printed and online) utilize icons to chart the sites of environmental significance here in New Haven and around the world.

THE NATURE OF NEW HAVEN

East Rock

One of the best bird's-eye views of New Haven and its harbor can be found at the summit of East Rock Park, a crown jewel of the City of New Haven's Department of Parks, Recreation and Trees.



Reclipse Trail, West Rock Ridge, State Park

West Rock



East Rock Park

West Rock Ridge State Park, on the west side of New Haven and extending north into Hamden and beyond, is another prominent traprock ridge that rises nearly 300 feet higher than East Rock.

Predators avoid this little salamander much in the way that predators avoid poison dart frogs in tropical America.



Red eft, terrestrial stage of the red-spotted newt (Notopthalmus viridescens)

Lighthouse Point

A tour of the New Haven parks would not be complete without a stop at Lighthouse Point Park. In addition to the historic lighthouse, working carousel, and well-kept beach, Lighthouse Point Park is one of the best hawk watching sites in New England.



Red-tailed hawk (Buteo jamaicensis)

East Rock Park is home to a number of native amphibians, which are attracted to its vernal pools, temporary bodies of water that typically form in shallow depressions in wooded or semi-wooded areas and catch rain and snow melt in the spring.

While most amphibians and reptiles spend the cold months of winter deep underground, buried in mud, or in a shelter such as a cave or rock pile, others spend the winter under leaf litter or just barely under the surface soil.



Wood frog (Rana sylvatica)

In addition to being a very large piece of undeveloped, wooded open space within the New Haven city limits, East Rock is recognized as one of the best places in this part of the state to observe warblers during their annual spring migration.



Trillium grandiflorum

Every spring Connecticut wildflowers come alive with an explosion of color: Large-flowered trillium, bloodroot, blue cohosh and Dutchman's breeches are just a few of the many plants that can be found growing in forests, along streams and on ridge tops in parks like West Rock and East Rock.

The red eft, the adolescent stage of the Eastern Red-spotted Newt, is often seen after summer rains in West Rock Park. The life history of this species is unique among New England salamanders.



The harbor seal is generally found swimming in the ice-free northern waters of eastern Canada and Maine, but as winter approaches it migrates southward.

During the winter months harbor seals can be seen along the Connecticut coast in small groups lounging on sandbars, rocks or remote beaches.



Lighthouse Point

Recreation

Canoe New Haven

A community initiative linked by New Haven's rivers. Programs include canoe and kayak excursions, river cleanups, demonstrations and walks.

Farmington Canal Rail-to-Trail Association
A nonprofit group made up of volunteers from communities that are connected by the trail.

New Haven Bird Club
NHBC is dedicated to the conservation of the area's natural resources in order to make available more opportunities for recreation and education in bird watching.

New Haven Inner City Outings
A volunteer organization that provides trained leaders, equipment, and transportation to help children get outdoors and experience nature.

Environmental Education

New Haven Ecology Project

358 Springdale Ave. Seeks to cultivate healthy living habits and sustainable practices. NHEP offers environmental education programs, demonstrating environmentally appropriate practices.

Yale Peabody Museum of Natural History
170 Whitney Ave. Offers a window of discovery to our world's natural heritage—its flora, fauna, geology, and people.

Schooner, Inc.
60 South Water St. Dedicated to promoting environmental awareness and personal growth by providing educational experiences in marine science, sailing and the history of Long Island Sound and its watershed.

Solar Youth, Inc.

54 Wayfarer St. Provides opportunities for young people to develop a positive sense of self and connection and commitment to other through environmental exploration, leadership and community service programs.

Whitney Water Center

945 Whitney Ave. Hamden. An innovative education center created by the Regional Water Authority. Offers water science programs to school classes, scouts and other groups.

Urban Agriculture

CitySeed

CitySeed seeks to grow an equitable, local food system that promotes economic development, community development and sustainable agriculture.

Yale Sustainable Food Project Farm

Edwards St. between St. Roman and Prospect St. This one-acre organic garden serves as a year-round educational resource for Yale students as well as New Haven school groups.

Environment

Connecticut Fund for the Environment

720 Edgewood Ave. A New Haven parks advocacy group working to promote, protect and serve the interests of the New Haven parks system and its constituents.

Elm City Parks Conservancy

205 Whitney Ave. Uses science and law to advocate for sound environmental policies, monitor government agency implementation of state and federal statutes, and educate citizens about environmental issues.

SIGNIFICANT ORGANIZATIONS

Environment Northeast

101 Whitney Ave. Environment Northeast is a non-profit research and advocacy organization that implements environmentally and economically sustainable solutions to energy, climate and air quality issues in New England and the Eastern Canadian Provinces.

The Garden Club of New Haven

Founded in 1924, and a member of the Garden Club of America and the Federated Garden Clubs of Connecticut, the purpose of the Club is to create interest in and promote knowledge of gardening, preservation of natural resources and horticulture work in the greater New Haven area.

Mill River Watershed Association

PO Box 6642, Hamden CT, 06517. MRWA is a broad-based collaborative that exists to promote the effective stewardship of the watershed through conservation and restoration.

New Haven Environmental Justice Network

NH-EJN promotes environmental justice through education and activism. Its goals are to safeguard the health of New Haven residents and reduce illness from environmental pollution.

New Haven Urban Resources Initiative

230 Prospect St. URI is a not-for-profit/university partnership whose mission is to foster community-based land stewardship, promote environmental education and advance the practice of urban forestry.

New Haven Land Trust

205 Whitney Ave. A non-profit land trust dedicated to land conservation, community gardens and environmental education.

Quinnipiac River Watershed Association

99 Colony St. Meriden, CT 06450. Dedicated to the preservation of the Quinnipiac River and its watershed, which extends from Plainville south to New Haven Harbor.

City Government

City Plan Department

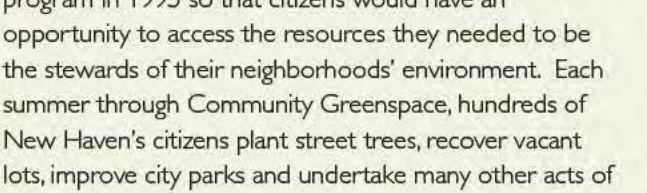
165 Church Street, 5th Floor. City Plan facilitates the physical development of the City and encourages the development of sustainable land use, economic and social policy.

Community Services (CSA)

165 Church St. CSA's mission is to improve the health and quality of life for all New Haven residents.

COMMUNITY GREENSPACES AND GARDENS

NEW HAVEN URBAN RESOURCES INITIATIVE (URI) believes that people who live in cities must take action to protect, restore, and enhance the environment, which they live in. Through our Community Greenspace program, URI advocates that people are the primary drivers and beneficiaries of the urban ecosystem and thus should be engaged along with city agencies to manage and improve our environment.

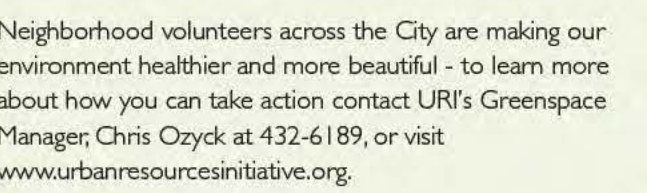


Tree planting at Water and Pine greenspace



ly Narrow greenspace

stewardship. City residents identify projects they would like to do and URI provides the plant materials and technical guidance needed to implement the projects.



Watering flowers at May and State greenspace



Tree planting, Newhallville greenspace

The Community Greenspace program is primarily supported through a partnership between the Community Foundation for Greater New Haven, the City of New Haven and the New Haven Urban Resources Initiative at the Yale School of Forestry and Environmental Studies.



Pumpkin party



View from Long Wharf Preserve

THE NEW HAVEN LAND TRUST, INC. was founded in 1982 with the goal of open space preservation. Through land acquisition, the Land Trust established six nature preserves encompassing a variety of habitats.



View from Long Wharf Preserve



View from Long Wharf Preserve



View from Long Wharf Preserve

Livable City Initiative

165 Church St. LIC removes blighted buildings, reduces neighborhood density, promotes homeownership, and prevents the spread of blight.

New Haven Parks, Recreation and Trees

720 Edgewood Avenue. Responsible for the stewardship of New Haven's entrusted assets for the enhancement of the City and the enjoyment of its citizens, and for initiating and conducting recreational programs and activities.

Sierra Club

The Sierra Club's members are encouraged through group activities to explore and enjoy the environment so that they will be motivated to protect it.

Trust for Public Land

101 Whitney Ave. A national non-profit organization dedicated to conserving land for people to enjoy as parks and open space.

Yale Green Corps

Yale Greencorps is committed to working towards a more just local environment through grassroots organizing and collaboration with state legislators.

Yale Student Environmental Coalition

YSEC is committed to improving the environment at Yale, in New Haven and around the world.

The Watershed Partnership, Inc.

155 White Birch Drive, Guilford 06437. An organization for clean water, healthy watersheds, and safe, healthy, livable communities.

Department of Agriculture

Connecticut Agricultural Experiment Station, 123 Huntington St. Research station that investigates plants, insects, soils and water, and analyzes food, pesticides, fertilizers and other products for the benefit of the general public.

Department of Environmental Protection

79 Elm St. Hartford. The mission of the Department of Environmental Protection (DEP) is to conserve, improve and protect the natural resources and environment of the State of Connecticut.

From here, the CARE program intends to continue implementation of the air toxics initiative; enhance the City's environmental planning capacity specifically tasked to improve toxic-related land use decision-making; and initiate an on-site pollution prevention and best practices program for city residential, commercial, institutional and industrial facilities.

For more information or to participate in the program, please visit www.cityofnewhaven.com or www.epa.gov.

Printed on 100% post-consumer recycled, processed chlorine free, FSC certified paper.