

greatlakesmonitoring.org team

- EPA-GLNPO
 - Paul Horvatin, MIRB Branch Chief
 - Program leads – Eric Osantowski and Glenn Warren, Limnology; Beth Murphy Fish Monitoring; Todd Nettesheim, IADN
- NCSA
 - Developers: Luigi Marini, Barbara Minsker, Nick Tenczar, Rob Kooper, Brock Angelo, Eugene Roeder
 - Designer – Lisa Gatzke
- IL – IN Sea Grant
 - Brian Miller, Kristin Tepas



Corpus Christi Bay (CCBay)

Dimensions

N to S ~ 12 mi

E to W ~ 18 mi

Average depth ~ 9 ft

Adjacent bays:

Oso Bay, Laguna

Madre, Nueces Bay,

Redfish Bay



Hypoxia

Dissolved oxygen < 30 % saturation (~2mg/L)

Occurs episodically in CCBay during summer months

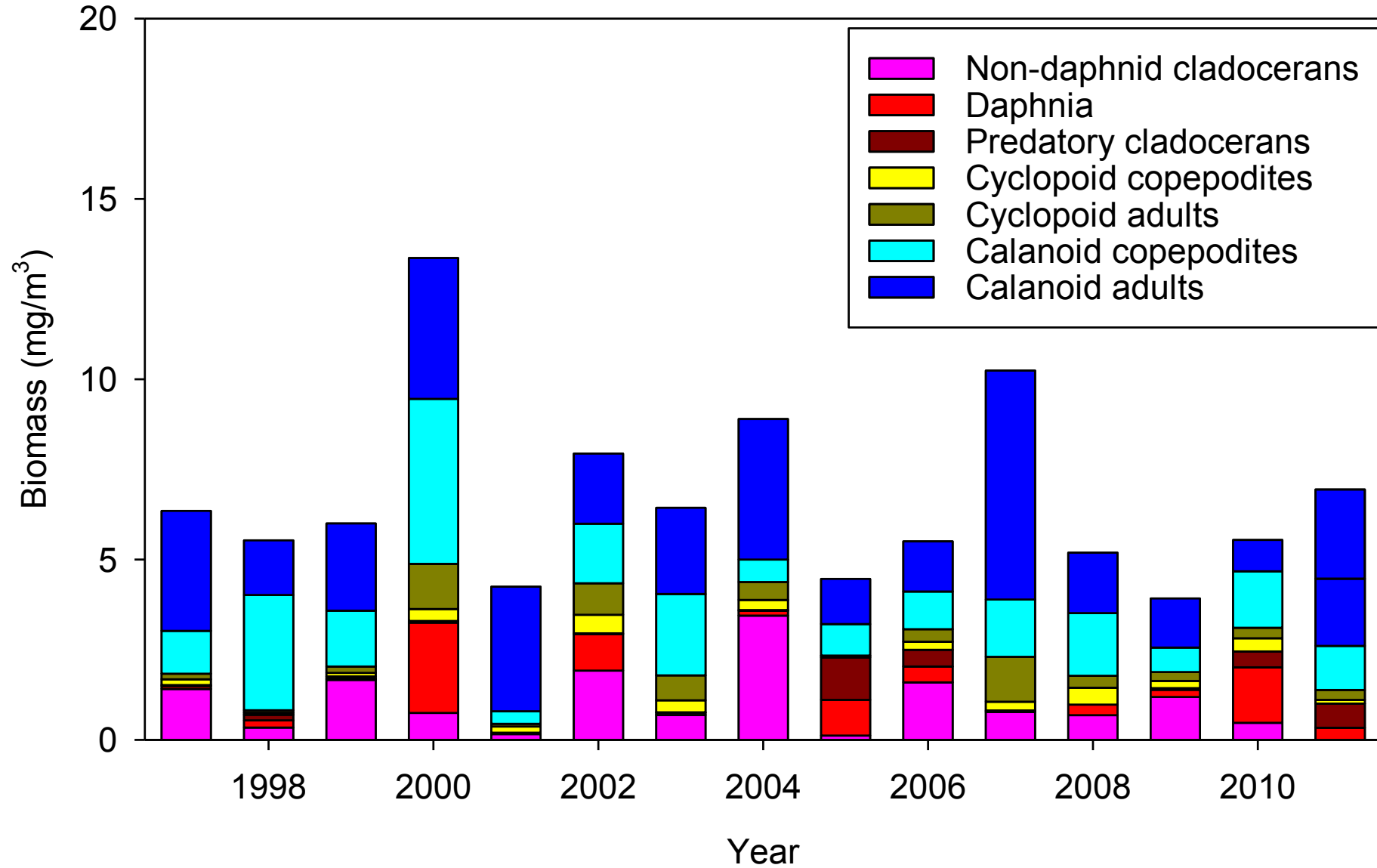
Results in ten-fold reduction in stock and diversity of benthic organisms.

glm demo

Future steps

- Automate data ingestion:
 - USGS stream gauges
 - STORET and WQP
 - MI-DEQ a

August crustacean zooplankton biomass
Station SU 10, 1997-2011
153 um mesh, 100 m tows

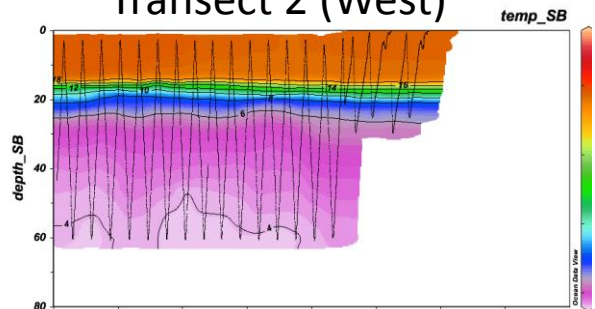


Future steps

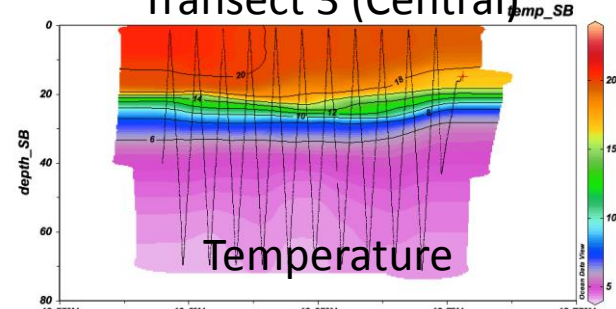
- Automate data ingestion:
 - USGS stream gauges
 - STORET and WQP
 - MI-DEQ
- Increase flexibility of data views
- Additional data views:
 - GLNPO Biology program

Night Transects

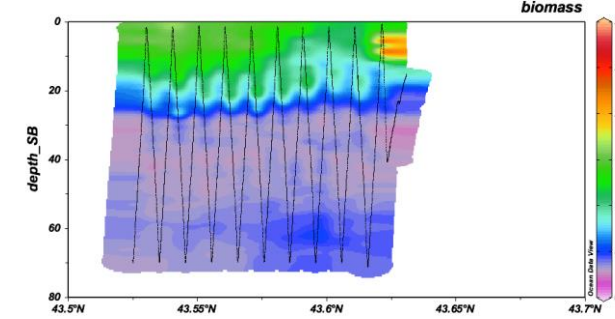
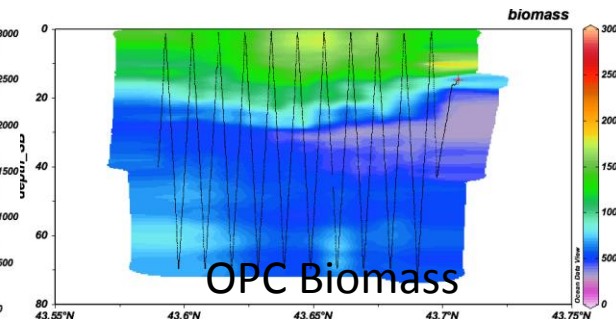
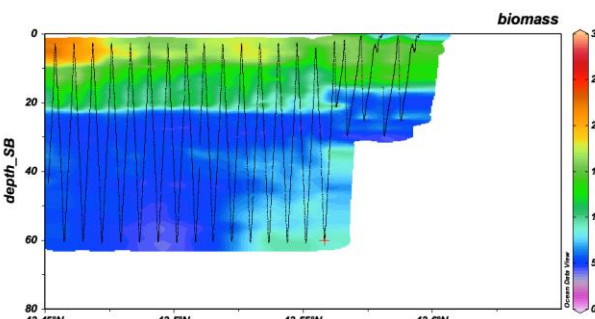
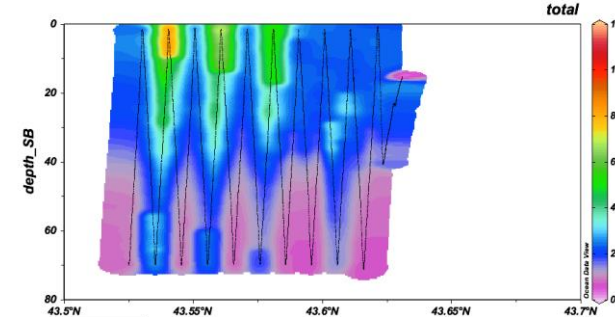
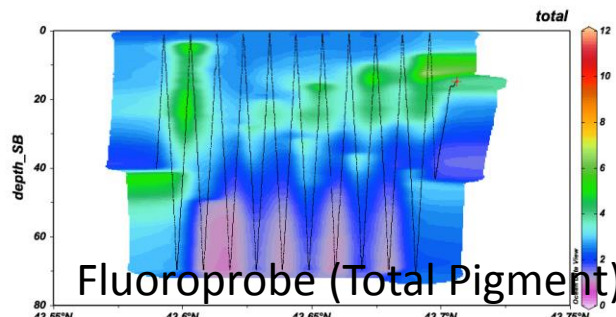
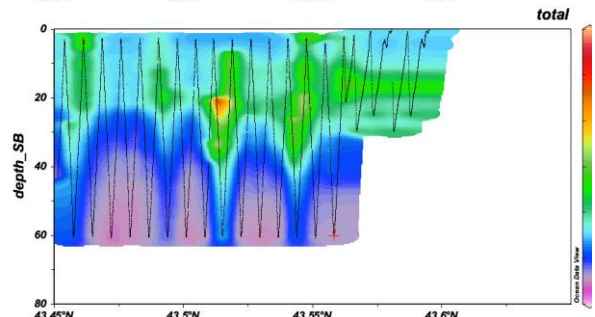
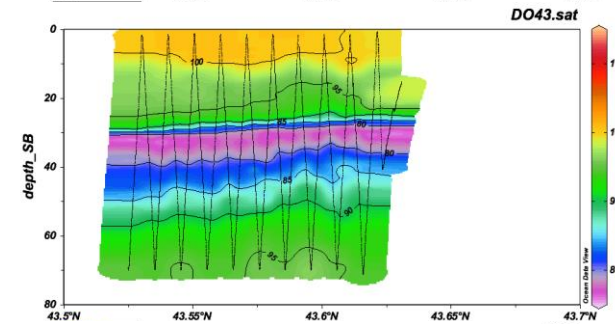
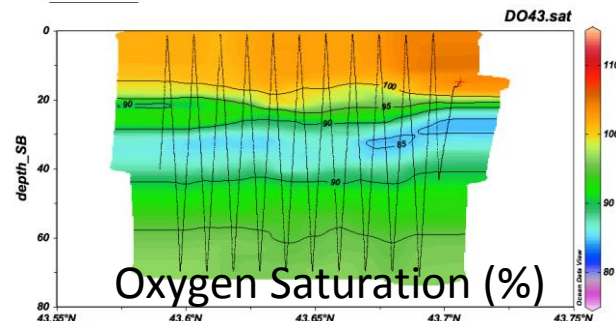
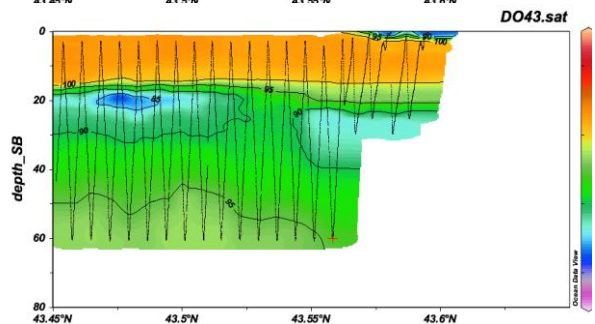
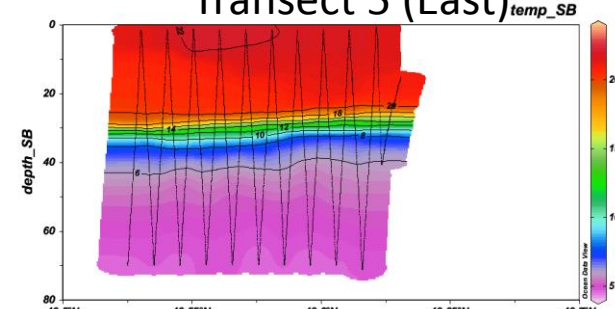
Transect 2 (West)



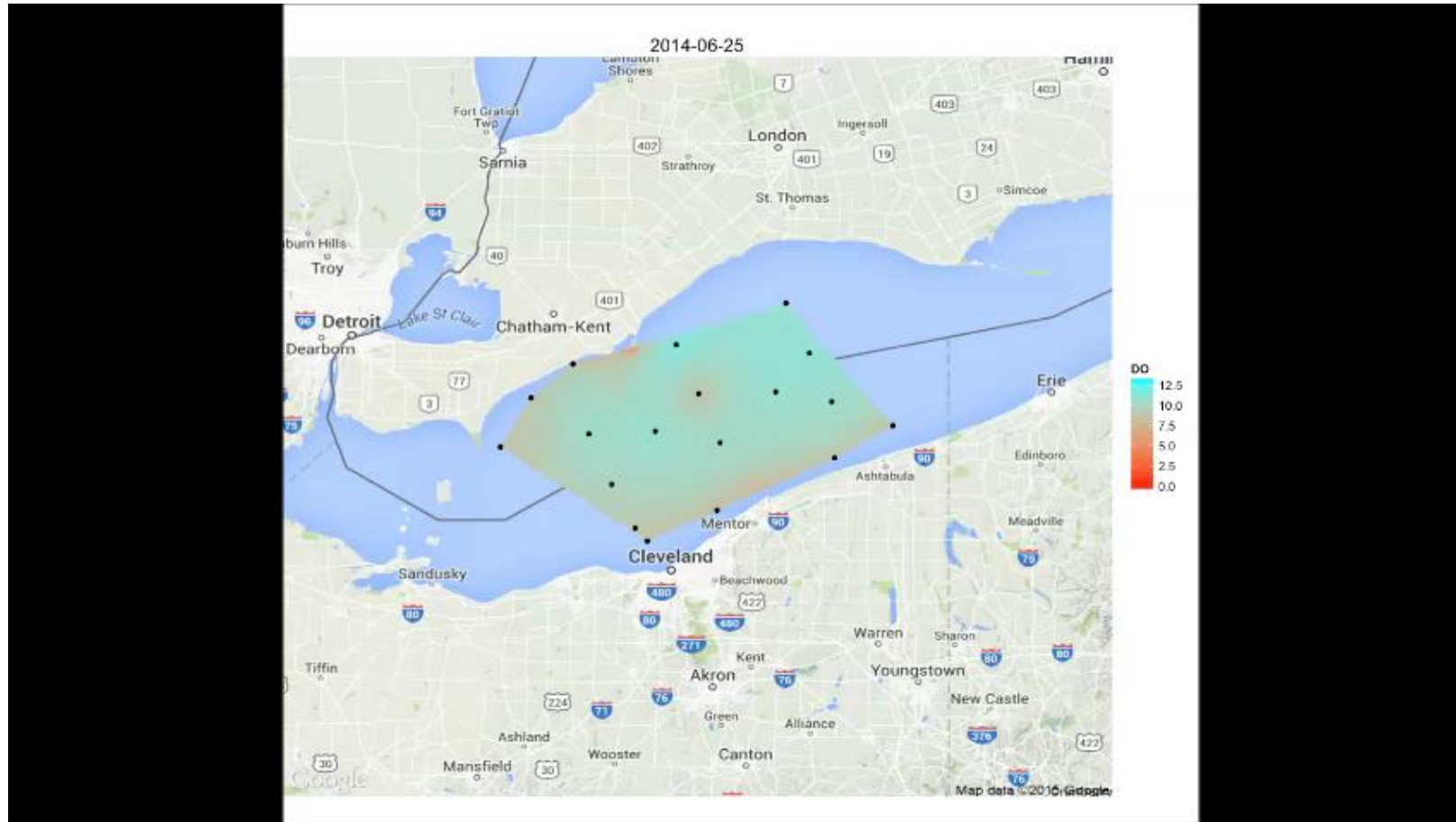
Transect 3 (Central)



Transect 5 (East)



Lake Erie – D.O.



Data requirements for glm.org

- Long term data sets
 - > 10 years
 - Likelihood of continuous monitoring
- Published QA/QC
- Sufficient metadata