

Lake Superior Environmental Monitoring Collaborative



Minnesota
Pollution
Control
Agency



November 19-20, 2014

US EPA Office of Research & Development
MED Conference Center, Duluth

State of Minnesota Monitoring Data

Data Sharing: MN Examples

- ❑ Web access to data
- ❑ State agency partnership

The screenshot displays the Minnesota Pollution Control Agency (MPCA) website. The header includes the MPCA logo, the text "Minnesota Pollution Control Agency", and a search bar. Below the header is a navigation menu with tabs for Home, Air, Water, Waste, Regulations, Living Green, Quick Links, Data, and About MPCA. The "Water" tab is selected, and the "Watersheds" sub-section is active. The main content area features the heading "Minnesota Watersheds" and a "NEW Twin Cities Metro Watersheds" banner. A search bar prompts users to "Find your watershed by city or town:" with a "GO" button. To the right is a "What is a watershed?" link with a small image. Below this is a map of Minnesota with several watersheds highlighted in orange. One watershed is specifically highlighted in a darker orange, and a text box to its right provides details about the "St. Louis River" watershed, stating it flows 195 miles and is highly fragmented by tributaries.

Minnesota Pollution Control Agency

Home | Air | **Water** | Waste | Regulations | Living Green | Quick Links | Data | About MPCA

Water Types and Programs | Permits and Rules | Monitoring and Reporting | Publications | Training | Pollution Prevention

Home > Water > Water Types and Programs > Watersheds

Minnesota Watersheds

NEW Twin Cities Metro Watersheds

Find your watershed by city or town: **GO**

[What is a watershed?](#)

Minnesota has 81 major watersheds. Each is defined by rivers, streams, lakes, and wetlands.

St. Louis River

The St. Louis River flows in a circuitous course for 195 miles from its source at Seven Beaver Lake to Lake Superior at the Duluth-Superior harbor. The St. Louis River watershed is highly fragmented by small, short tributaries. Two major tributaries drain a substantial portion of the watershed: the Cloquet River and the Whiteface River.

MPCA Watershed Web Pages & EDA

index.php/water/water-types-and-programs/watersheds/st-louis-river.html

ate.mn.us

Metropolitan Council - A... US EPA PPCP Research Phar... Home - Minnesota Polluti...

St. Louis River Watershed

Overview Restoration and protection Contacts **Maps**

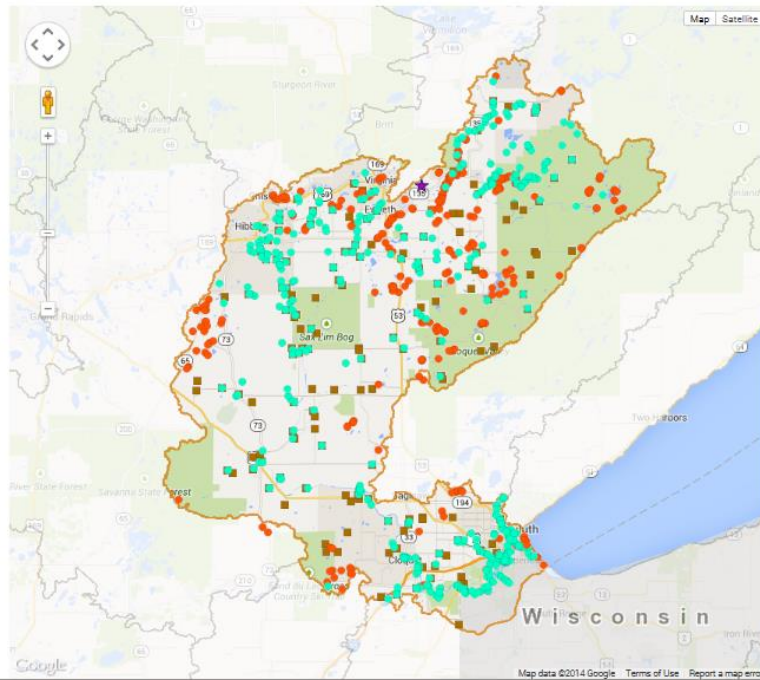
Watershed Map

Many of Minnesota's lakes and streams do not currently meet water-quality standards because of pollution such as excess sediment or nutrients, bacteria or mercury. These waters are considered "impaired." For more information, visit the impaired waters page.

The toggles show impaired waters and monitoring stations. Click on a site for more information.

Impairments in this watershed, listed by lake or stream segment
Generally, a waterbody has an impairment when it exceeds a particular pollutant standard.

[Toggle Impaired Waters](#) [Toggle Monitoring Stations](#)



IP/eda/stationInfo.php?ID=09LS110&ORG=MPCAB

Metropolitan Council - A... US EPA PPCP Research Phar... Home - Minnesota Polluti...

Environmental Data Access

[Print Report](#) [New Search](#)



Metropolitan Council - A... US EPA PPCP Research Phar... Home - Minnesota Polluti...

Environmental Data Access

[Print Report](#) [New Search](#)



Biological Station Information

Stream Name:	JOULA CREEK
Waterbody Name:	Joula Creek
Data Steward Org:	MPCA
Station ID:	09LS110
Hydrologic Unit Code (HUC):	04010201
Assessment Unit:	04010201-A16
Period of Record:	2009 through 2009
Predominant substrate:	
Mean Depth (cm):	
Mean Width (meters):	
Drainage Area (square miles)	13.87

Land Use

Agricultural	0.1%
Forest	26.5%
Range	3.2%
Urban	0.5%
Water	0.1%
Wetland	69.6%
Other	0.0%

Lat/Lon

47.0551,-92.93598333

Index of Biological Integrity

Site Index of Biological Inte

Visit Year
Fish IBI
Fish Rating
Invertebrate IBI
Invertebrate Rating

Index of Biological Integrity Chemical Projects Aquatic Life Species Attributes

Data collected from June 30, 2009

Site Visit Date	30-JUN-09
Water Temperature °C	14.9°
Conductivity µmhos/cm	115.7
Field Turbidity NTU	
Dissolved Oxygen mg/L	4.38
PH	6.98
Flow m ³ /sec	



WIMN: What's in My Neighborhood

Home > Data

tinyURL : enzq1422 | ID : 2761

Data

IN THIS SECTION

e-Services

Air quality

Contaminated Sites

Petroleum storage tanks

Recycling and pollution prevention

Spatial data

Hazardous waste

Solid waste

Groundwater data

▶ Surface water

WIMN: What's in My Neighborhood

RELATED TOPICS

Home

Air

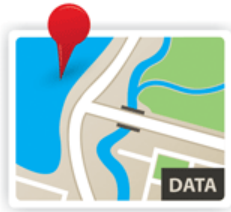
Water

Waste

Regulations

Living Green

Surface water data



Lakes and streams

Search for data about water health and projects

All of this data is now accessible through a new search tool



Lake and stream stations

Citizen monitoring stations

Pollutant load monitoring

Impaired waters

Surface water assessments

Watershed (WRAPS) and TMDL projects

Permit, licenses and certifications

- **Construction stormwater permit data.** Find information about permits for discharging stormwater from construction sites.
- **Industrial stormwater permit information access.** Find information about industrial stormwater discharge permittees and their permits.
- **What's in My Neighborhood.** Find information about regulated facilities or sites in an area of interest, including the site types listed below. To list sites of a given type, choose the "text search" option, then select the appropriate "activity type."
 - Construction stormwater projects
 - Feedlots
 - Industrial stormwater dischargers
 - MS4 (municipal separate storm sewer system) projects
 - Wastewater dischargers

DNR Cooperative Stream Gaging Site

http://www.dnr.state.mn.us/waters/csg/index.html

DNR/MPCA Cooperative St...

File Edit View Favorites Tools Help

US EPA 100th Blog Post Harnessin... Home RII Metropolitan Council - A... US EPA PPCP Research Phar... Home - Minnesota Polluti...

Minnesota
Department of Natural Resources

events | a-z list | newsroom | about DNR | search | contact us

Recreation | Destinations | Nature | Education / safety | Licenses / permits / regs.

Home > Ecological and Water Resources (Waters) >

DNR/MPCA Cooperative Stream Gaging

Map View Table View Search Links Help

Legend

Sites:

- Flooding (Q10), > 90th pctile
- High Flow (Q25), 76th - 90th pctile
- High Normal, 51st - 75th pctile
- Low Normal, 26th - 50th pctile
- Low Flow (Q75), 11th - 25th pctile
- Critical Flow (Q90), <= 10th pctile
- Not Ranked
- No Telemetry Data

site filters

has telemetry data: yes

has archive data: ---

has water chemistry: ---

is CWL site: ---

is flood warning gage: ---

has gagings: ---

has photos: ---

provider: all providers

Update Reset

Overlay layers:

- DNR Obwell Inventory
- NEXRAD Mosaic (WMS)
- NWS State Weather Roundup

Downloads: map | georss | kml (all sites) | kml (telemetry/refreshing) | shapefile | csv

100%

3:36 PM 11/14/2014

ural Resources

eve

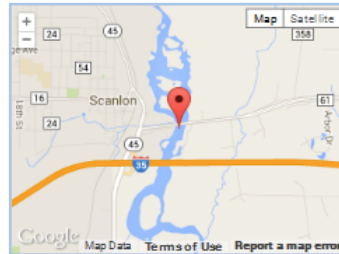
Recreation | Destinations | Nature | Education / safety | Licenses / permits / regs.

Home > Ecological and Water Resources (Waters) > Stream Gaging - Cooperative DNR/MPCA >

Site report

St. Louis River at Scanlon, MN (03174001)

USGS ID: [04024000](#), Water Chemistry ID: [S005-089](#), NWS AHPS: [scnm5](#)
Provider: USGS

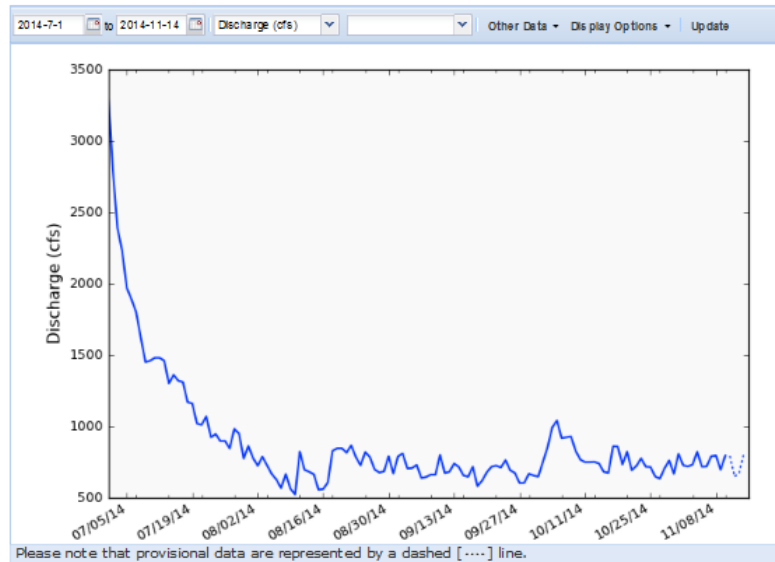


Most Recent Data

Stage: 2.97 ft at Nov 14, 2014 13:30 CST
Flow: 806 ft³/sec at Nov 14, 2014 13:30 CST

Period of Record

Telemetry data: 2014-11-11 to 2014-11-14
Available data: all telemetry variables
Archive data: 1908-01-01 to 2014-11-10
Available data: daily discharge




Download: [pdf version of above hydrograph](#)

[all water chemistry data](#) (csv) | [water chemistry data for above period](#) (csv)

[all hydro data](#) (csv) | [data for above period](#) (csv)

[all year and summary data](#) (html)

MDH Environmental Public Health Tracking Portal



Minnesota Department of Health

Minnesota Public Health Data Access

Home & Topics
Asthma
Change Geography

Asthma Hospitalizations: All Ages, 2007 - 2011 | Age-adjusted rates per 10,000

Select Map
Legend
Data Information
Map Tools

Legend

Age-adjusted rates per 10,000

- 1.8 - 7.4
- 7.5 - 12.8
- 12.9 - 20.9
- 21.0 - 43.1
- Unstable rate*
- Data not shown**
- MSP Airport

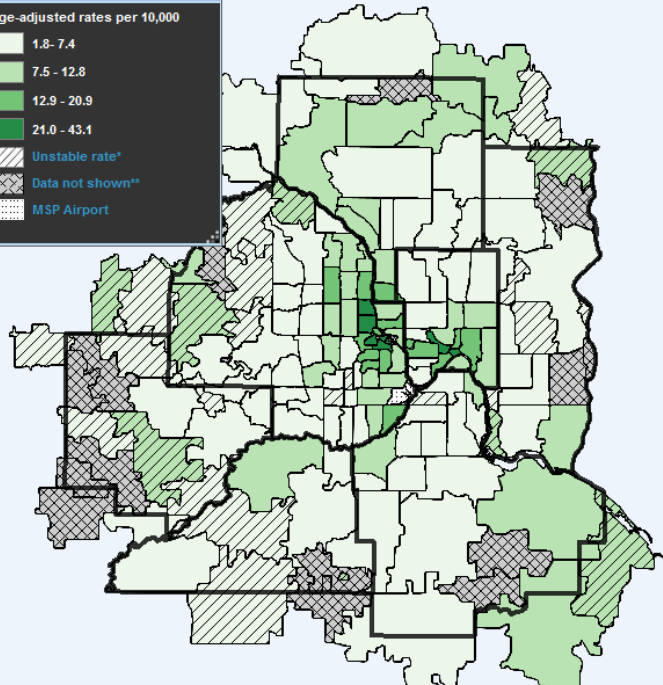


Table
About the Map Data
Help

Asthma Hospitalizations: All Ages, 2007 - 2011

Age-adjusted Rates per 10,000

Region	Rate	95% CI	5-Year Count	Population	Age under 18	Age over 65
7-County Metro Area	8.5	(8.1 - 8.8)	11,394	2,824,804	24.7%	10.6%
Minnesota	7.4	(7.2 - 7.7)	19,785	5,294,141	24.1%	12.7%

ZIP Code	Rate	95% CI	5-Year Count	Population	Age under 18	Age over 65
55057	6.1	(5.5 - 6.7)	68	24,368	19.5%	11.5%
55065**	**	**	**	1,103	25.8%	8.7%
55068	6.6	(6.1 - 7.1)	89	26,844	30.5%	7.4%
55070	6.3	(5.2 - 7.4)	24	7,262	29.2%	6.5%
55071*	7.8	(6.5 - 9.2)	19	5,619	26.7%	11.0%
55073*	7.8	(4.4 - 12.9)	9	2,936	24.9%	16.0%
55075	8.7	(8.0 - 9.4)	83	20,295	24.0%	11.8%
55076	6.3	(5.7 - 6.8)	62	20,700	21.2%	13.9%
55077	6.9	(6.0 - 7.8)	40	12,958	29.0%	8.4%
55079	7.9	(6.8 - 9.1)	27	7,490	23.5%	7.3%
55082	2.1	(2.0 - 2.3)	39	34,578	24.8%	13.7%
55088**	**	**	**	1,486	25.8%	12.1%
55089*	8.9	(7.0 - 11.3)	8	1,868	23.4%	9.9%
55092	9.7	(8.5 - 11.1)	50	11,153	27.1%	9.8%
55101	29.2	(17.2 - 46.3)	43	5,666	5.5%	11.2%
55102	16.9	(15.2 - 18.5)	125	16,669	15.1%	12.9%
55103	25.2	(22.8 - 27.6)	146	12,938	31.1%	7.4%
55104	14.6	(13.9 - 15.3)	287	42,521	22.9%	8.0%
55105	3.3	(3.0 - 3.6)	41	27,107	17.4%	9.9%

Download Data

Surface water

[Metropolitan Council Environmental Information Management System](#)

[Expand for more information...](#) **Provider:** Metropolitan Council Environmental Services (MCES)

Interactive webpages that allow professionals, students, researchers, and citizens access to water quality-related data and information from the Minneapolis-St. Paul area rivers, streams, lakes, and wastewater treatment plants, as well as precipitation data from various locations.

[Lake Finder](#)

[Hide extra information...](#) **Provider:** Minnesota Department of Natural Resources

Type of information provided	Summarized Information/ Reports/ Maps
Format of the information	Web page with maps and graphs
Type of user the site is designed for	General public looking for information related to recreation, fishing, water quality and fish consumption advisory
Typical uses for the site's information	Fish consumption advisories, Lake Maps, Water Quality, water clarity, lake surveys (fisheries)
Category of water	Lakes and some parts of large river system
How often is the information updated	Variable based on the harvested data maintenance schedule

[Hide extra information...](#)

Lakefinder is a web application targeted to the general public interested in information about a specific lake. Not all lakes have been surveyed.

[Streamflow Gauging](#)

[Expand for more information...](#) **Provider:** Minnesota Department of Natural Resources

A joint effort between the USGS, National Weather Service, MPCA, and the Minnesota Department of Natural Resources, this site provides access to river and stream gauge information across the state.

[Watershed webpages – a variety of data and information on Minnesota's watersheds](#)

[Expand for more information...](#) **Provider:** Minnesota Pollution Control Agency (MPCA)

An interactive map interface allowing citizen and professional users to access data and information on Minnesota's watersheds, water monitoring, and management activities going on in them.

[Impaired Waters List](#)