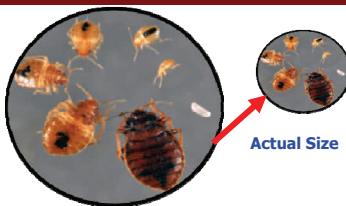




735-F 11-008

## Bed Bug Card



### Bed Bug Identification

- ◆ Eggs are tiny, white, and glued to surfaces.
- ◆ Oval shaped, flattened with six legs.
- ◆ Nymphs are light colored, from 1/16".
- ◆ Adults are rusty red, apple seed sized, 1/4-3/8".
- ◆ Do not jump or fly, but are good runners.
- ◆ Tend to congregate together.

### Signs of Bed Bugs

- ◆ Small black droppings, blood stains or shed skins on bottom bed sheet.
- ◆ Red, itchy rashes from bites.

For more information on bed bugs and Integrated Pest Management (IPM) go to:  
[www.epa.gov/bedbugs](http://www.epa.gov/bedbugs)

## Early detection and prompt response can avoid larger problems

### Where to Look

- ◆ Behind bed head boards.
- ◆ Along mattress seams.
- ◆ In bed box springs.
- ◆ Along room base boards.
- ◆ In or under other furniture.



### Additional Facts

- ◆ Adults can survive months without feeding.
- ◆ Never proven to transmit human disease.
- ◆ Active and feed mostly at night.
- ◆ They may be spread via used furniture, especially mattresses.
- ◆ Bite "sensitivity" varies from severe to no reaction.

### I Have Bed Bugs, Now What?

- ◆ Capture it in a clear zip bag for proper ID.
- ◆ Educate yourself & your children on controls
- ◆ Do not panic & throw out furniture or items.
- ◆ Install mattress encasements & interceptors
- ◆ Practice Integrated Pest Management.
- ◆ Consult a pest management professional.
- ◆ Use only EPA registered pesticides for bed bugs.