

Groundwater Flow Model Progress Report 03, Red Hill Bulk Fuel Storage Facility

JOINT BASE PEARL HARBOR-HICKAM, O‘AHU, HAWAI‘I

Administrative Order on Consent in the Matter of Red Hill Bulk Fuel Storage
Facility, EPA Docket Number RCRA 7003-R9-2015-01 and
DOH Docket Number 15-UST-EA-01, Attachment A, Statement of Work
Section 6.2, Section 7.1.2, Section 7.2.2, and Section 7.3.2

December 3, 2017
Revision 00



Comprehensive Long-Term Environmental Action Navy
Contract Number N62742-12-D-1829, CTO 0053

This page intentionally left blank

1 **Groundwater Flow Model Progress**
2 **Report 03, Red Hill Bulk Fuel**
3 **Storage Facility**

4 **JOINT BASE PEARL HARBOR-HICKAM, O'AHU, HAWAI'I**

5 **Administrative Order on Consent in the Matter of Red Hill Bulk Fuel Storage**
6 **Facility, EPA Docket Number RCRA 7003-R9-2015-01 and**
7 **DOH Docket Number 15-UST-EA-01, Attachment A, Statement of Work**
8 **Section 6.2, Section 7.1.2, Section 7.2.2, and Section 7.3.2**

9 **December 3, 2017**
10 **Revision 00**

11 Prepared for:

12 **Defense Logistics Agency Energy**
13 **8725 John J Kingman Rd Suite 4950**
14 **Fort Belvoir, VA 22060-6222**

15 Prepared by:

16 **AECOM Technical Services, Inc.**
17 **1001 Bishop Street, Suite 1600**
18 **Honolulu, HI 96813-3698**

19 Prepared under:



21 **Comprehensive Long-Term Environmental Action Navy**
22 **Contract Number N62742-12-D-1829, CTO 0053**

This page intentionally left blank

1	CONTENTS	
2	Acronyms and Abbreviations	v
3	1. Introduction	1
4	2. Work Completed This Period	1
5	2.1 Current Status	1
6	2.1.1 Technical Progress	6
7	2.1.2 Technical Issues	11
8	2.2 Submittal of Modeling Deliverables	11
9	3. Anticipated Work Next Reporting Period	12
10	4. References	13
11	FIGURES	
12	1 Current and Previous Groundwater Model Areas	3
13	2 Water Supply Wells within the Model Area	7

This page intentionally left blank

1		ACRONYMS AND ABBREVIATIONS
2	AOC	Administrative Order on Consent
3	BWS	Board of Water Supply, City and County of Honolulu
4	CF&T	contaminant fate and transport
5	CSM	conceptual site model
6	CWRM	Commission on Water Resource Management, State of Hawai'i
7		Department of Land and Natural Resources
8	DLNR	Department of Land and Natural Resources, State of Hawai'i
9	DOH	Department of Health, State of Hawai'i
10	EPA	Environmental Protection Agency, United States
11	ft	foot/feet
12	GWFMWG	Groundwater Flow Model Working Group
13	HGU	hydrogeologic unit
14	SOW	scope of work
15	SWAP	Source Water Assessment Program
16	TPH	total petroleum hydrocarbons
17	TUA	Tank Upgrade Alternatives
18	USGS	United States Geological Survey
19	WP	work plan

This page intentionally left blank

1. Introduction

This *Groundwater Flow Model Progress Report 03* is the third in a series of modeling progress reports that describes the technical status of the groundwater flow modeling effort being conducted for the Investigation and Remediation of Petroleum Product Releases and Groundwater Protection and Evaluation project at the Red Hill Bulk Fuel Storage Facility (“Facility”), Joint Base Pearl Harbor-Hickam, O’ahu, Hawai’i. The progress report is a component of the overall project reporting as specified in the project *Work Plan/Scope of Work* (WP/SOW) (DON 2017a). The WP/SOW presents the process, tasks, and deliverables that address the goals and requirements of Statement of Work Sections 6 and 7 of the *Administrative Order on Consent* (AOC) *In the Matter of Red Hill Bulk Fuel Storage Facility* (EPA Docket No: RCRA 7003-R9-2015-01; DOH Docket No: 15-UST-EA-01) (EPA Region 9 and DOH 2015). Submittal of groundwater flow model progress reports at a minimum of every 4 months is stipulated in AOC Statement of Work Section 7.1.2.

The objective of the AOC is to take steps to ensure the groundwater resource in the vicinity of the Facility is protected and to ensure that the Facility is operated and maintained in an environmentally protective manner. Work to support Section 6 of the AOC Statement of Work is being conducted in response to the January 2014 release from Tank 5 and to evaluate potential remediation methods for the January 2014 Tank 5 release and any future releases. Work to support Section 7 of the AOC Statement of Work is being conducted to monitor and characterize the flow of groundwater around the Facility and includes groundwater modeling. The collective work conducted under Section 7 will be used to inform changes to the *Groundwater Protection Plan* (DON 2014).

Reporting Period 03 covered in this report represents progress for the third 4-month period (August 5 – December 3, 2017) following conditional approval of the project WP/SOW by the Regulatory Agencies, which was received by the Navy on December 5, 2016 (EPA Region 9 and DOH 2016). *Groundwater Flow Model Progress Report 01* and *Report 02* were submitted on April 5, 2017, and August 4, 2017, respectively.

2. Work Completed This Period

2.1 CURRENT STATUS

The Groundwater Flow Model Working Group (GWFMWG) met three times during this reporting period, on August 17, September 22, and November 17, 2017. The GWFMWG is composed of representatives from the Navy, United States Geological Survey (USGS), United States Environmental Protection Agency (EPA), State of Hawai’i Department of Health (DOH), State of Hawai’i Department of Land and Natural Resources (DLNR) Commission on Water Resource Management (CWRM), City and County of Honolulu Board of Water Supply (BWS), and the University of Hawai’i. The working group was formed to coordinate the development of accurate and reliable groundwater flow and contaminant fate and transport (CF&T) models.

Groundwater flow modeling is being conducted to improve the understanding of the direction and rate of groundwater flow around the Facility. CF&T modeling is being conducted to improve the understanding of the potential fate and transport, degradation, and transformation of contaminants that have been or could be released from the Facility. The groundwater modeling will help ascertain potential risk to water supply wells as a result of a potential range of releases from the Facility under a range of reasonable pumping conditions within the model area. The results of this modeling effort will then be used to:

1. Inform decisions related to the Tank Upgrade Alternatives (TUA), and
2. Inform decisions related to identification and selection of potential remedial alternatives

1 The focus of the ongoing and upcoming groundwater modeling is to improve understanding of
2 groundwater flow direction and rates in the Facility area to provide a basis for evaluating potential
3 contaminant migration. Groundwater modeling work completed during this reporting period included
4 obtaining and evaluating additional hydrologic and geologic data and developing the conceptual site
5 model (CSM) for groundwater flow and contaminant transport. Boundaries for the model area were
6 discussed and refined based on working group member comments during the August 17, 2017,
7 meeting (see Figure 1).

8 A *Groundwater Model Evaluation Plan* (DON 2017f) and an *Attenuation Evaluation Plan* (DON
9 2017c) were prepared by the Navy and submitted for review by the AOC Parties.

10 During the September 22 GWFMWG meeting, additional working group member comments on the
11 modeling evaluation plan and attenuation evaluation plan were discussed, which prompted additional
12 review and evaluation by the Navy. During the November 17 meeting, detailed technical responses
13 to all the major comments from BWS were provided by the Navy. Additional draft in-progress work
14 products were presented during the November 17 meeting, including geologic, groundwater flow,
15 and water chemistry information currently being compiled and integrated in the CSM. Newly
16 acquired geologic data showing the estimated depth of saprolite in RHMW11 were provided. New
17 groundwater data and updated hydrogeologic cross sections were also presented by the Navy and
18 discussed during the November meeting.

19 Currently available data within the model area are sufficient to calibrate the numerical groundwater
20 model. Relevant hydrogeologic information and groundwater data include borehole geologic logs,
21 the geologic log of the Red Hill water development tunnel, time-series hydrographs of groundwater
22 levels, barrel logs, borehole geophysical logs, pumping tests, synoptic monitoring data, geologic
23 cross-sections, hydrogeologic unit (HGU) properties, hydraulic gradients, and the hydrologic
24 components of the model area groundwater balance.

25 Available hydrogeologic data in previous reports and borehole geologic logs from deep wells were
26 evaluated to develop a conceptual understanding of the subsurface geology surrounding Red Hill.
27 Geologic logging of new well RHMW11 indicates that upper basalt layers have been transformed *in*
28 *situ* by weathering into a low-permeability clayey material (saprolite) beneath valley fill. This
29 saprolite zone at this well location extends to at least 70 feet (ft) below the water table, which is on
30 the north side of South Hālawa Stream. This weathered basalt (saprolite clay) will likely act as a
31 barrier to both groundwater flow and potential contaminant migration from Red Hill to BWS wells
32 located farther to the north.

33 Additional wells and seismic studies are planned for both North and South Hālawa Valleys to
34 confirm presence and extent of hydraulic barriers. These wells will also provide water level data to
35 further define hydraulic gradients. Completion of the new wells will also allow testing of discrete
36 depth intervals to evaluate hydraulic conductivity utilizing the planned wells' multi-level monitoring
37 system, which will further support the evaluation of barriers.

38 The 2006 and 2015 synoptic pumping/water level data for Navy Red Hill Shaft and BWS Hālawa
39 Shaft pumping tests by the USGS have been compiled and will be used for model calibration. Soon
40 additional data will also be available from the 2017 synoptic pumping/water level study currently
41 being conducted by the USGS, which will be used to further evaluate hydraulic properties of the
42 aquifer in the study area.

\\honolulu\Honolulu\Projects\NAVFAC PAC\CLEAN\160481245CTO 00531900-Work\920 GIS\02_Maps\Model Progress Report 03\Fig1_Current-Previous_Model_Areas.mxd 12/1/2017

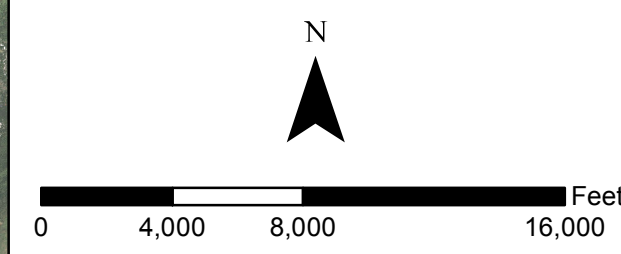
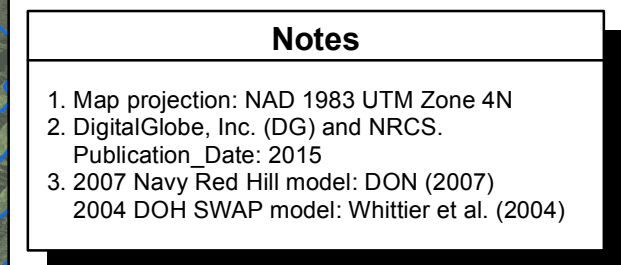
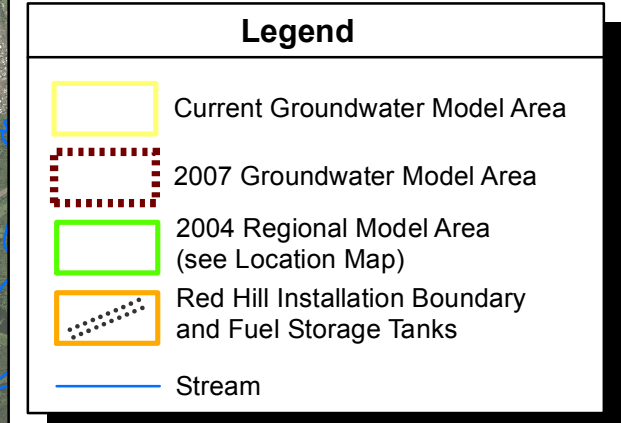
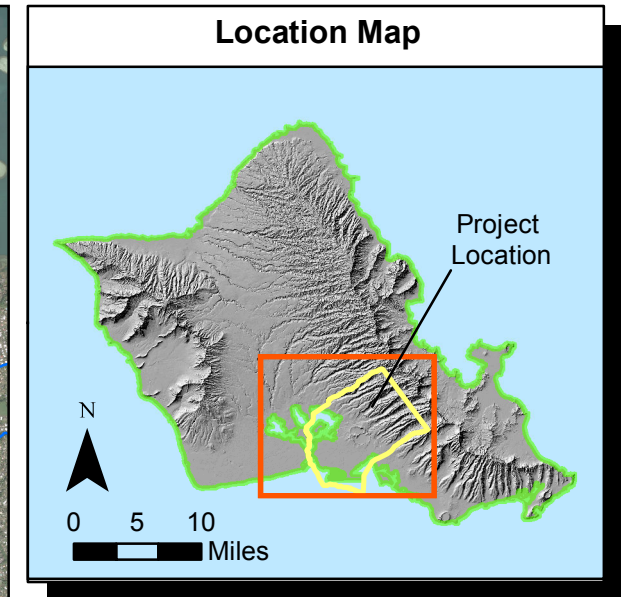


Figure 1
Current and Previous Groundwater Model Areas
Groundwater Model Progress Report 03
Red Hill Bulk Fuel Storage Facility
JBPHH, O'ahu, Hawai'i

This page intentionally left blank

1 Natural attenuation studies currently underway by the Navy are providing additional information on
2 physical, chemical, and microbial processes that cause the weathering and degradation of organic
3 constituents (e.g., fuel) that are released into the environment. Data collected to date indicate that
4 natural attenuation is actively occurring at the site. Site activities conducted in October 2017
5 included temperature profiling, carbon dioxide measurements in groundwater, soil gas measurements
6 (methane, carbon dioxide, oxygen, compounds associated with total petroleum hydrocarbons [TPH]),
7 and sampling for microbial analyses.

8 A high-precision topographic survey using Second Order, Class I techniques of the groundwater
9 measuring points for wells in the Red Hill groundwater monitoring network was recently completed.
10 The survey data provide consistent elevations to within 1-millimeter accuracy for evaluating
11 groundwater elevations and flow directions. These new data will accurately establish groundwater
12 elevations for determining hydraulic gradients and groundwater flow directions. The Navy intends to
13 expand the precision topographic survey to include additional wells in the vicinity of Red Hill.
14 A gyroscopic survey of the current monitoring well network was completed in November 2017 to
15 determine if correction factors need to be applied when groundwater elevations are calculated;
16 preliminary results are being evaluated and reviewed by the National Geodetic Survey.

17 The preliminary results of the high-precision topographic survey indicate no significant differences
18 with previously reported groundwater elevations for key well locations, suggesting that newly
19 calculated hydraulic heads will be similar to those reported by previous studies at the Facility. The
20 new data add confidence that hydraulic gradients and flow directions can be reasonably determined.
21 In addition, data from new wells will provide groundwater elevations and geological information at
22 additional locations and thus will be instrumental in evaluating both horizontal and vertical hydraulic
23 gradients and flow directions surrounding the Facility, particularly between Red Hill and North
24 Hālawā Valley.

25 During the meetings, the Navy further explained the technical approach for the groundwater
26 modeling, including detailed discussions of the following points:

- 27 • Sentry wells, which may include existing or new (future) monitoring well locations, will be
28 used to provide early detection of potential future releases, and facilitate additional measures
29 for containment if needed.
- 30 • Extensive regional groundwater level data are available, which can be used to estimate
31 long-term trends in water levels and seasonal fluctuations.
- 32 • Calibrating a transient model to long-term available data is not necessary to develop a better
33 model to meet the project objectives. Information has been extracted from available data on
34 model-wide trends and monthly variations.

35 To evaluate uncertainty, a sensitivity analysis of the model will be performed consistent with ASTM
36 International guidance (ASTM 2002). This analysis will focus on how varying model input
37 parameters within reasonable ranges will affect modeling results. The sensitivity analysis results will
38 be conservatively evaluated with respect to remedial alternatives for protection of potential receptors.
39 A constrained Monte Carlo uncertainty analysis is not planned because it will not add meaningful
40 information relative to key factors (e.g., groundwater flow direction and rate).

1 2.1.1 Technical Progress

2 During this period, the Navy made substantial progress in collecting additional hydrogeologic data,
3 drilling and installing monitoring well RHMW11, preparing the updated CSM document, setting up
4 the groundwater model, and planning for a seismic study.

5 Collecting and evaluating the additional hydrogeologic data are underway to support the
6 groundwater modeling. Immediately prior to the August 17 meeting, the Navy obtained geospatial
7 data sets from the USGS, which were previously developed by the USGS to accompany recent
8 technical reports (Engott et al. 2015; Izuka et al. 2016). The Navy used these USGS data to define
9 the 3D geometry of the Caprock HGU and Basalt HGU throughout the model area. The Navy
10 presented graphics from different perspectives to illustrate the HGU geometry. Updated geospatial
11 data for groundwater recharge rates were also obtained from the USGS and processed by the Navy
12 for input to the groundwater model. Other activities conducted by the Navy during this reporting
13 period include:

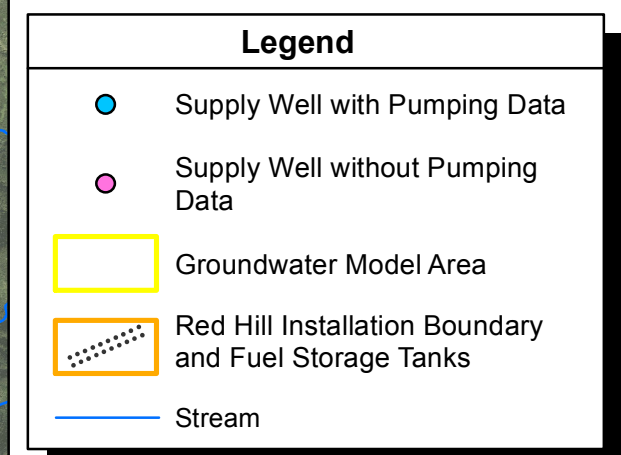
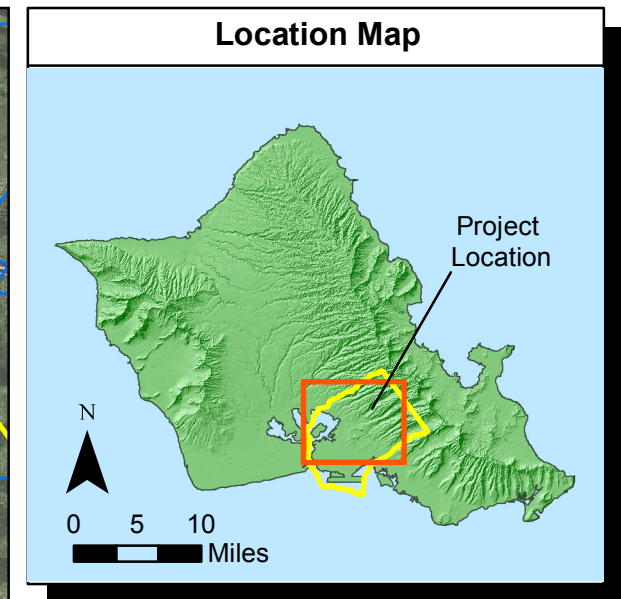
- 14 • Compiled and evaluated data from the May 2015 Hālawā Shaft pumping and USGS
15 monitoring study
- 16 • Obtained high-precision survey data of wellhead measurement point elevations.
- 17 • Re-calculated groundwater elevations from the monitoring wells in the area of interest based
18 on the new survey data.
- 19 • Prepared a map of groundwater elevations using the synoptic measurements collected by the
20 Navy and USGS on November 18, 2016.
- 21 • Evaluated hydraulic conditions along the updated perimeter boundaries based on available
22 data, as described in the *Groundwater Model Evaluation Plan* (DON 2017f).
- 23 • Acquired additional field data to evaluate natural attenuation.
- 24 • Completed drilling and coring at RHMW11, establishing depths of valley fill sediments and
25 sapolite underlying South Hālawā Stream.

26 The USGS began synoptic monitoring of water levels in mid-July 2017 by installing pressure
27 transducers in wells within the area of interest. The monitoring period planned for this study extends
28 through December; however, it may be extended to accommodate periods of controlled pumping in
29 local water supply wells so that the effects of pumping individual wells can be further evaluated.

30 The BWS provided information for water supply wells within the model area. The Navy prepared
31 maps that show the water supply wells and annual pumping rates of the supply wells located within
32 the model area and outside the boundaries (see Figure 2).

33 The Navy is planning to conduct a seismic study in December 2017. Two to three transects are
34 planned across each valley. The proposed surveys are intended to increase understanding of geologic
35 structures within the valleys bordering Red Hill. The characterization results will be used to further
36 develop the CSM for the area in support of the project's groundwater flow and CF&T modeling
37 effort.

\\honorolulu\honorolulu\Projects\NAVFAC PAC\CLEAN\160481245CTO 00531900-Work\920 GIS\02_Maps\Model Progress Report 03\Fig2_SupplyWells.mxd 11/27/2017



Notes

1. Map projection: NAD 1983 UTM Zone 4N
2. DigitalGlobe, Inc. (DG) and NRCS.
Publication_Date: 2015

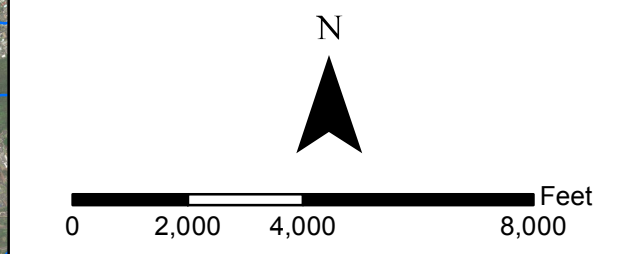


Figure 2
Water Supply Wells within the Model Area
Groudwater Model Progress Report 03
Red Hill Bulk Fuel Storage Facility
JBP HH, O'ahu, Hawai'i

This page intentionally left blank

1 **August 17 meeting:** The Navy presented detailed geologic cross sections showing the basalt layers
2 and other subsurface features at the facility. For the entire model area, the Navy showed the
3 geometry of the HGUs in 3D via interactive computer output from the conceptual model based on
4 the available data. Well locations available for model calibration, including the well intake
5 elevations, were also presented on the 3D visualizations relative to the hydrogeologic units and land
6 surface topography. The plan for establishing the numerical model layers and model bottom were
7 presented and discussed. The Navy presented an overview of the CSM of natural attenuation
8 processes and planned data collection. Scheduled field activities for the additional hydrogeologic
9 data collection were also presented, including precision re-surveying of measurement points, drilling,
10 and monitoring well installation.

11 Additional monitoring well locations are planned, which will be completed with several different
12 intake intervals isolated by external casing packers and depth-discrete sampling ports (Westbay
13 system). The wells will be completed in this manner to measure hydraulic head with depths and
14 establish vertical hydraulic gradients, to determine hydraulic conductivity of the sample zone, and to
15 obtain water quality data from the sample zones.

16 **September 22 meeting:** The Navy presented the planned approach and timeline for interim
17 groundwater modeling. Presentations by the Navy included the following topics:

- 18 • Groundwater modeling objectives and purpose of the working group meetings
- 19 • Responses to various issues raised by other working group members and action items from
20 previous meetings
- 21 • Plans for natural attenuation data collection at Red Hill and current status
- 22 • Updated boundaries and layers for the groundwater model
- 23 • Technical approach for uncertainty analysis of the groundwater model
- 24 • Hydrogeologic unit geometry and hydraulic properties
- 25 • USGS synoptic water level study progress
- 26 • Land surveying of wellhead measurement point elevations
- 27 • Plan for TUA decision support document
- 28 • BWS well data requests

29 At the end of the meeting, the Navy provided the following summary:

- 30 • Data from natural attenuation and geologic analyses will be not be incorporated into the
31 interim model but will be used on a general basis and will be incorporated into the fate and
32 transport modeling effort.
- 33 • Different model scenarios (e.g., pumping rates) will be solicited by the Navy from members
34 of the GWFMWG prior to running the model.
- 35 • Groundwater flow barriers (e.g., valley fill) will not be modeled if there is no evidence that
36 they exist.
- 37 • Sensitivity analyses will be conducted to determine the appropriate bounds for key
38 groundwater parameters (e.g., recharge and hydraulic conductivity), and evaluate the
39 model's boundaries.

- 1 • Synoptic groundwater elevation data will be used to determine the direction of groundwater
2 flow within the model area, and to evaluate the effect of different pumping scenarios on flow
3 direction.
- 4 • Navy, BWS, and EPA will work together in their Data Sharing Group to finalize a data
5 sharing agreement and the details of the Geographic Information System database.
- 6 • The CSM will be presented at the next GWMWG meeting.
- 7 • The TUA Decision support document and interim model will be submitted electronically in
8 March 2018.

9 **November 17 meeting:** In this meeting, the Navy addressed working group member comments from
10 the September 22 meeting, presented the CSM for groundwater flow and described the interim
11 groundwater modeling activities currently underway. Specifically, the presentations by Navy
12 included:

- 13 • Responses to the top five issues raised by the working group members to date
- 14 • Planned surface geophysical surveys
- 15 • Data collection activities currently in progress for evaluating natural attenuation
- 16 • Groundwater quality monitoring status and results
- 17 • Results to date and plans for high-precision land surveys of additional well heads
- 18 • Gyroscopic well survey status
- 19 • Forensic chemical analysis of fuels and meaning of total petroleum hydrocarbons reported
20 by labs, including chromatograms from Red Hill groundwater sample analyses
- 21 • Lines of evidence that natural attenuation processes are active at Red Hill tank farm area
- 22 • Historical photos and geologic logs of Red Hill Water Development Tunnel (the 2254-01
23 supply well's infiltration gallery)
- 24 • Detailed schedule for interim modeling
- 25 • Geologic log of core boring RHMW11 showing that saprolite extends to 70 ft below the
26 water table
- 27 • Updated north-south hydrogeologic cross-section extending from Hālawa Shaft through Red
28 Hill and southward (including the extent of valley fill/saprolite barriers in both North and
29 South Hālawa Valleys)
- 30 • Areas of higher groundwater recharge at Hawaiian Cement's Hālawa Quarry
- 31 • Map of borehole locations where perched water has been found above the water table
- 32 • Groundwater level hydrographs showing similarity of temporal fluctuations at RHMW07
33 and other Red Hill monitoring wells
- 34 • Groundwater budgets for current model area derived from previous Source Water
35 Assessment Program (SWAP) (Whittier et al. 2004) and USGS models and updated
36 conceptual model of groundwater budget
- 37 • Groundwater recharge in model area and uphill of northeast model boundary calculated from
38 most recent USGS recharge rate data

- 1 • Supply well pumping and spring discharge rates within model area
- 2 • Multiple lines of evidence showing groundwater flow is southwestward from the Red Hill
- 3 tank farm area
- 4 • Graphics showing 50% isochlor interface location, hydraulic conductivity, and water levels
- 5 for base case conditions simulated by the SUTRA groundwater model (Oki 2005)
- 6 • Evaluation of transient groundwater model calibration match to May 2006 pumping test data
- 7 (DON 2007)
- 8 • Conclusions from 2007 Red Hill model in light of new data
- 9 • Results of hypothesis testing of deepening the freshwater-saltwater interface depth using
- 10 2007 Red Hill model
- 11 • Statistical analysis of trends of groundwater level data available for the model area
- 12 • Reconfirmation of technical approach for modeling of freshwater-saltwater interface
- 13 • Maps and 3D graphics showing updated boundaries and subsurface geometry of
- 14 hydrogeologic unit layers in interim model
- 15 • Calibration targets and weights for updated model
- 16 • Website information with downloadable MODFLOW USG transport code
- 17 • Summary of planned next steps for the interim modeling

18 **2.1.2 Technical Issues**

19 The work performed so far has revealed several uncertainties and limitations in the available data,
20 including:

- 21 • The elevation of the water level measurement point for Hālawā Shaft has not been obtained;
22 this is critical information for evaluating water level data used in the upcoming modeling
23 effort.
- 24 • BWS has indicated they have provided all available data requested by the Navy; however,
25 some data such as water level measurements and water quality data for Hālawā Shaft have
26 not been obtained.
- 27 • The complete data set will not be available from the USGS synoptic monitoring study within
28 the timeframe required for modeling input to the TUA decision. At this point, it appears that
29 only the initial data set will be available from USGS, which includes data collected in the
30 initial phase of the study through October 2017.
- 31 • Sparse data for some hydrologic components create uncertainties in the conceptual
32 groundwater balance for the model area. For instance, submarine groundwater seepage
33 cannot be measured directly.
- 34 • If the additional monitoring wells are not installed within the next reporting period, it is
35 anticipated that the data from these wells will not likely be incorporated in the Section 7
36 *Groundwater Flow Modeling Report* due in December 2018.

37 **2.2 SUBMITTAL OF MODELING DELIVERABLES**

38 Relevant deliverables submitted during this reporting period:

- 1 • *Monitoring Well Installation Work Plan Addendum 02*, August 25, 2017 (DON 2017b)
- 2 • *Sampling and Analysis Plan Addendum 01*, September 3, 2017 (DON 2017e)
- 3 • *Conceptual Site Model Development and Update Plan*, September 3, 2017 (DON 2017d)
- 4 • *Attenuation Evaluation Plan*, September 3, 2017 (DON 2017c)
- 5 • *Groundwater Model Evaluation Plan*, September 8, 2017 (DON 2017f)
- 6 • *Final Third Quarter 2017 - Quarterly Groundwater Monitoring Report*, October 2017 (DON
- 7 2017g)

8 Additional deliverables being prepared at the time of this report's writing include:

- 9 • *Digital Leveling Survey Report* presenting results of high-precision survey of Red Hill
- 10 monitoring well elevations by Second Order, Class I techniques
- 11 • *Sampling and Analysis Plan Addendum 02* presenting plan for seismic surveys in Hālawā
- 12 and Moanalua Valleys)

13 Additional deliverables due for submittal during the next 4-month reporting period include:

- 14 • *Risk-Based Decision Criteria Development Plan* (December 11, 2017)
- 15 • *Sentinel Well Network Development Plan* (December 11, 2017)
- 16 • *Final Fourth Quarter 2017 - Quarterly Groundwater Monitoring Report* (January 2018)
- 17 • *Technical Memorandum, Groundwater Protection and Evaluation Considerations for Tank*
- 18 *Upgrade Alternatives Decision* (March 2018)

19 **3. Anticipated Work Next Reporting Period**

20 Anticipated work for Reporting Period 04 (December 4, 2017 – April 2, 2018) includes:

- 21 • GWFMWG meetings planned for December 20, 2017 (webinar) and January 11, 2018
- 22 (face-to-face)
- 23 • Further refining the hydrogeologic unit framework to be used as the interim model layers
- 24 • Setting up the interim flow model grid, boundary conditions, initial hydraulic parameter
- 25 values and calibration targets for 2006, 2015, and 2017 annual average steady-state
- 26 conditions
- 27 • Calibrating the interim steady-state flow model with 2006, 2015, and 2017 annual average
- 28 water levels and pumping rates
- 29 • Setting up and calibrating the transient model for 2006 and 2015 synoptic water level studies
- 30 • Performing particle tracking analysis for the capture zones under various pumping scenarios
- 31 to support the TUA decision process
- 32 • Preparing a draft modeling report to summarize the development of the interim model and
- 33 calibration processes
- 34 • Installing pressure transducers in newly installed well RHMW11 in early December 2017 to
- 35 collect water level data within several discrete zones within the Westbay system. Preliminary
- 36 results will be discussed.

4. References

- 1
2 ASTM International. 2002. *Standard Guide for Conducting a Sensitivity Analysis for a Ground-*
3 *Water Flow Model Application*. D5611-94(2002). West Conshohocken, PA.
- 4 Department of the Navy (DON). 2007. *Red Hill Bulk Fuel Storage Facility Final Technical Report,*
5 *Pearl Harbor, Hawaii*. Prepared by TEC Inc., Honolulu, HI. Pearl Harbor, HI: Naval Facilities
6 Engineering Command, Pacific. August.
- 7 ———. 2014. *Interim Update, Red Hill Bulk Fuel Storage Facility Final Groundwater Protection*
8 *Plan, Pearl Harbor, Hawaii. (January 2008)*. Pearl Harbor, HI: Naval Facilities Engineering
9 Command, Pacific. August.
- 10 ———. 2017a. *Work Plan / Scope of Work, Investigation and Remediation of Releases and*
11 *Groundwater Protection and Evaluation, Red Hill Bulk Fuel Storage Facility, Joint Base Pearl*
12 *Harbor-Hickam, O'ahu, Hawai'i; January 4, 2017, Revision 02*. Prepared by AECOM Technical
13 Services, Inc., Honolulu, HI. Prepared for Defense Logistics Agency Energy, Fort Belvoir, VA,
14 under Naval Facilities Engineering Command, Hawaii, JBPHH HI.
- 15 ———. 2017b. *Monitoring Well Installation Work Plan Addendum 02, Investigation and*
16 *Remediation of Releases and Groundwater Protection and Evaluation, Red Hill Bulk Fuel*
17 *Storage Facility, Joint Base Pearl Harbor-Hickam, O'ahu, Hawai'i; August 25, 2017, Revision*
18 *00*. Prepared by AECOM Technical Services, Inc., Honolulu, HI. Prepared for Defense Logistics
19 Agency Energy, Fort Belvoir, VA, under Naval Facilities Engineering Command, Hawaii,
20 JBPHH HI.
- 21 ———. 2017c. *Attenuation Evaluation Plan, Investigation and Remediation of Releases and*
22 *Groundwater Protection and Evaluation, Red Hill Bulk Fuel Storage Facility, Joint Base Pearl*
23 *Harbor-Hickam, O'ahu, Hawai'i; September 1, 2017, Revision 00*. Prepared by AECOM
24 Technical Services, Inc., Honolulu, HI. Prepared for Defense Logistics Agency Energy, Fort
25 Belvoir, VA, under Naval Facilities Engineering Command, Hawaii, JBPHH HI.
- 26 ———. 2017d. *Conceptual Site Model Development and Update Plan, Investigation and*
27 *Remediation of Releases and Groundwater Protection and Evaluation, Red Hill Bulk Fuel*
28 *Storage Facility, Joint Base Pearl Harbor-Hickam, O'ahu, Hawai'i; September 1, 2017,*
29 *Revision 00*. Prepared by AECOM Technical Services, Inc., Honolulu, HI. Prepared for Defense
30 Logistics Agency Energy, Fort Belvoir, VA, under Naval Facilities Engineering Command,
31 Hawaii, JBPHH HI.
- 32 ———. 2017e. *Sampling and Analysis Plan Addendum 01, Investigation and Remediation of*
33 *Releases and Groundwater Protection and Evaluation, Red Hill Bulk Fuel Storage Facility,*
34 *Joint Base Pearl Harbor-Hickam, O'ahu, Hawai'i; September 1, 2017, Revision 00*. Prepared by
35 AECOM Technical Services, Inc., Honolulu, HI. Prepared for Defense Logistics Agency
36 Energy, Fort Belvoir, VA, under Naval Facilities Engineering Command, Hawaii, JBPHH HI.
- 37 ———. 2017f. *Groundwater Model Evaluation Plan, Investigation and Remediation of Releases*
38 *and Groundwater Protection and Evaluation, Red Hill Bulk Fuel Storage Facility, Joint Base*
39 *Pearl Harbor-Hickam, O'ahu, Hawai'i; September 8, 2017, Revision 00*. Prepared by AECOM
40 Technical Services, Inc., Honolulu, HI. Prepared for Defense Logistics Agency Energy, Fort
41 Belvoir, VA, under Naval Facilities Engineering Command, Hawaii, JBPHH HI.

- 1 ———. 2017g. *Final Third Quarter 2017 - Quarterly Groundwater Monitoring Report, Red Hill*
2 *Bulk Fuel Storage Facility, Joint Base Pearl Harbor-Hickam, O'ahu, Hawai'i*. Prepared by
3 AECOM Technical Services, Inc. JBPHH HI: Naval Facilities Engineering Command, Hawaii.
4 July.
- 5 Engott, J. A., A. G. Johnson, M. Bassiouni, and S. K. Izuka. 2015. *Spatially Distributed*
6 *Groundwater Recharge for 2010 Land Cover Estimated Using a Water-Budget Model for the*
7 *Island of O'ahu, Hawai'i*. Scientific Investigations Report 2015–5010. Prepared in cooperation
8 with the State of Hawai'i Commission on Water Resource Management and the City and County
9 of Honolulu Board of Water Supply. U.S. Geological Survey.
- 10 Environmental Protection Agency, United States, Region 9; and Department of Health, State of
11 Hawaii (EPA Region 9 and DOH). 2015. *Administrative Order on Consent In the Matter of Red*
12 *Hill Bulk Fuel Storage Facility, EPA Docket No: RCRA 7003-R9-2015-01; DOH Docket No: 15-*
13 *UST-EA-01*. September.
- 14 ———. 2016. “Conditional Approval of Red Hill AOC SOW Deliverable under Sections 6 & 7 -
15 Work Plan/Scope of Work, Investigation and Remediation of Releases and Groundwater
16 Protection and Evaluation, Red Hill Bulk Fuel Storage Facility, November 5, 2016 Revision 01.”
17 Letter from Bob Pallarino, EPA Red Hill Project Coordinator, and Steven Chang, DOH Red Hill
18 Project Coordinator, to: Captain Richard D. Hayes, Navy Region Hawaii. December 2, 2016.
- 19 Izuka, S. K., J. A. Engott, M. Bassiouni, A. G. Johnson, L. D. Miller, K. Rotzoll, and A. Mair. 2016.
20 *Volcanic Aquifers of Hawai'i—Hydrogeology, Water Budgets, and Conceptual Models*.
21 Scientific Investigations Report 2015–5164. Water Availability and Use Science Program. U.S.
22 Geological Survey.
- 23 Oki, D. S. 2005. *Numerical Simulation of the Effects of Low-Permeability Valley-Fill Barriers and*
24 *the Redistribution of Ground-Water Withdrawals in the Pearl Harbor Area, Oahu, Hawaii*.
25 Scientific Investigations Report 2005-5253. U.S. Geological Survey.
- 26 Whittier, R. B., K. Rotzoll, S. Dhal, A. I. El-Kadi, C. Ray, G. Chen, and D. Chang. 2004. *Hawaii*
27 *Source Water Assessment Report*. Prepared for the Hawai'i Department of Health, Safe Drinking
28 Water Branch. University of Hawai'i, Water Resources Research Center.