

Update | February 2018



## EnviroAtlas Update Bulletin

Keep up with the latest in EnviroAtlas news

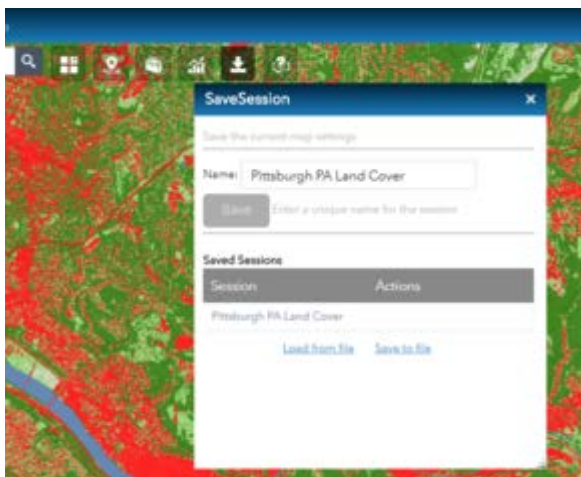
---

### IN THIS UPDATE

- Save Your Map Session | Now available
- Resources | EnviroAtlas & HIA, Educational Lesson Plan on Watersheds
- New Data | Vacancy Rate, Quality of Life, Nutrients from Ag Fields and More

---

### Save Your Map Session



In the Interactive Map, you can now save a session that you are working on and come back to it later, or download that session and send it to someone else who can load it into the map.

No login is required - *Save Session* uses your browser cache to remember you and the EnviroAtlas data layers you saved.

[Try Save Session now >>](#)

---

### New Resources for EnviroAtlas Users

#### Using EnviroAtlas in a Health Impact Assessment (HIA)

Use cases provide examples of how EnviroAtlas data and tools can be used in different decision contexts. Our latest use case explores the use of EnviroAtlas in an HIA evaluating a proposed policy to promote physical fitness in public parks in the Town 'n' Country area of Tampa, Florida.

[Learn more >>](#)

## Educational Lesson Plan: "Exploring Your Watershed"

*Exploring Your Watershed* is a three-part lesson module that gets students outdoors, mapping, and simulating a watershed. In this K-6 lesson, students will learn to:

- Describe a watershed and how it works
- Describe characteristics of ecosystems
- Explain how humans can change their behavior to protect their local watershed



[Access the module >>](#)

---

Esri's Joseph Kerski shared his thoughts on Teaching with EnviroAtlas. [Check out his blog >>](#)

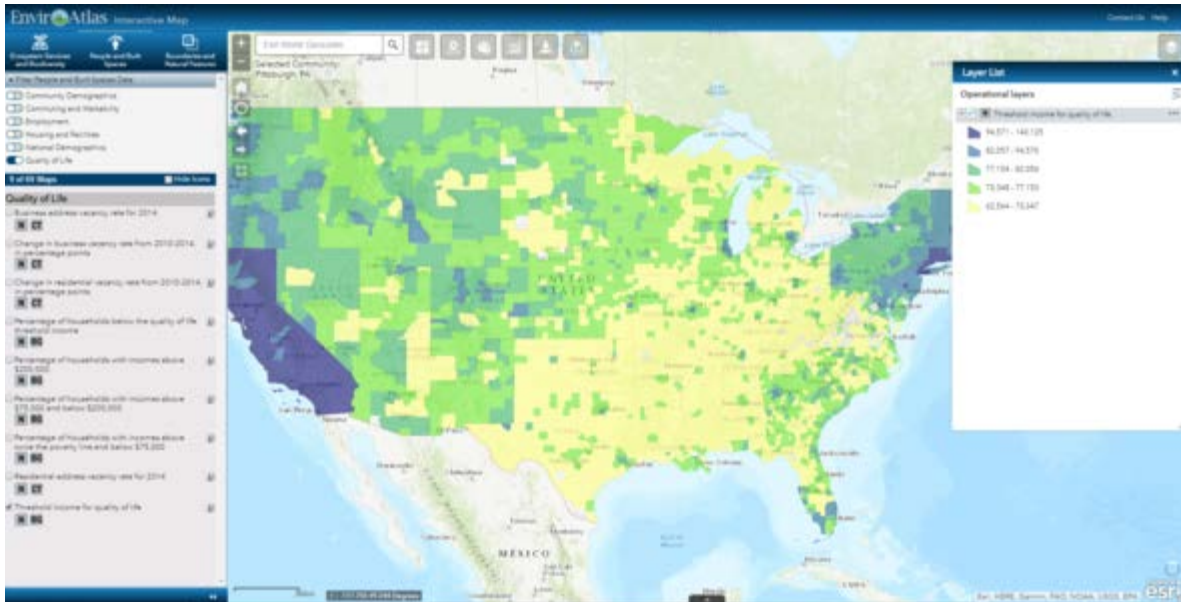
---

## New Data

### Quality of Life

This is a new data topic found under the *People and Built Spaces* data tab in the Interactive Map. This topic includes nine new metrics on vacancy rates and income thresholds for quality of life. These data are available by census block group for the nation.

- Percentage of households with incomes above twice the poverty line and below \$75,000
- Percentage of households with incomes above \$75,000 and below \$200,000
- Percentage of households with incomes above \$200,000.
- Percentage of households below the quality of life threshold income
- Threshold income for quality of life (shown below)
- Business address vacancy rate for 2014
- Change in business vacancy rate from 2010-2014, in percentage points
- Residential address vacancy rate for 2014
- Change in residential vacancy rate from 2010-2014, in percentage points



Threshold income for quality of life (household), based on national value adjusted to reflect county cost of living (2008-2012).

New data also include suites of metrics related to farmland rental rates, drainage and nutrients from agricultural fields, and land types on steep slopes. All data layers are available for the nation. Headers below indicate the *Topic* under which the data can be found in the Interactive Map.

[Learn more about EnviroAtlas data organization>>](#)

### Crop Productivity

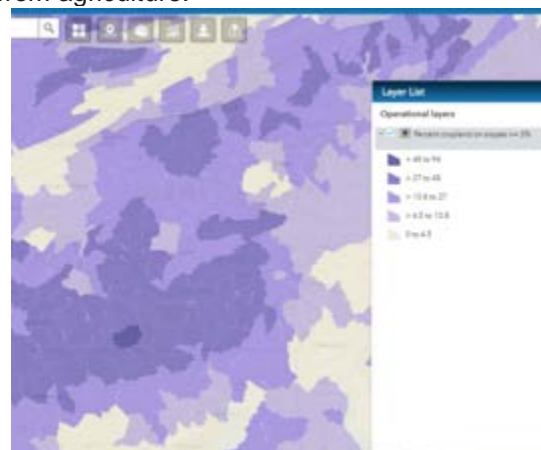
- Mean rental rate per acre for farm land, 2008-2016 Irrigated
- Mean rental rate per acre for farm land, 2008-2016 Non-irrigated
- Mean rental rate per acre for farm land, 2008-2016 Pasture

### Land Cover: Near Water

- Average width of stream buffers downstream from agriculture.

### Land Cover: Type

- Cropland on slopes (*Shown on the right*)
- Pasture on slopes



### Pollutant Reduction: Water

- Percent of agriculture that is buffered
- Net agricultural phosphorus balance (kg P/ha/yr)
- Crop phosphorus removal (kg P/ha/yr)

### Pollutants: Nutrients

- Percent non-buffered agriculture
- Dissolved nitrogen in non-tile drain subsurface flow from agricultural fields (tons)
- Dissolved nutrients in surface runoff from agricultural fields (tons): Nitrogen & Phosphorus

- Dissolved nutrients in tile drain subsurface flow from agricultural fields (tons): Nitrogen & Phosphorus
- Nutrients attached to eroding surface soil from agricultural fields (tons): Nitrogen & Phosphorus
- Dissolved nutrients in leachate from agricultural fields (tons): Nitrogen & Phosphorus
- Phosphorus fertilizer application (kg P/ha/yr)
- Phosphorus application as manure (kg P/ha/yr)

#### **Water Supply, Runoff, and Flow**

- Subsurface water flow through agricultural tile drainage systems (mm)
- Non-tile drainage system subsurface water flow from agricultural lands (mm)
- Percolation from agricultural lands (mm)
- Surface runoff from agricultural land (mm)
- Surface sediment erosion from agricultural lands (tons)

#### **Landscape Pattern**

- Candidate Ecological Restoration Areas (polygons)
- Candidate Ecological Restoration Areas Per square Kilometer

**[Explore these data in the Interactive Map >>](#)**

---

**Have question or comments for the EnviroAtlas team? [Contact us!](#)**

---