



HON. NORBERTO SOTO FIGUEROA
ALCALDE MUNICIPIO DE PATILLAS

"Un mejor pueblo,
para un mejor País"

14 de mayo de 2018

Carmen R. Guerrero-Pérez
Director
Caribbean Environmental Protection Division

cc: Sr. Sergio Bosques
Regional Stormwater Coordinator
USEPA
Caribbean Environmental Protection Division
PRR040078

2018 MAY 25 AM 11:10
RECEIVED
USEPA

Saludos cordiales señora Guerrero-Pérez,

En carta recibida y dirigida al señor Alcalde, Norberto Soto Figueroa, donde describe información relacionado con el NOI en cuanto a la renovación, hicimos lo pertinente para poder cumplir al respecto.

Adjunto encontrara información de nuestro trabajo realizado acorde con el asunto señalado. Lo sometemos mucho antes de la fecha señalada que son 150 días por si hubiese algo que corregir tener el tiempo necesario para poder trabajarlo.

De tener cualquier duda con la información expuesta favor de comunicarse al 787 839-4120 con el Hon. Norberto Soto Figueroa.

Hon. Norberto Soto Figueroa
Ejecutivo Municipal

United States Environmental Protection Agency
National Pollutant Discharge Elimination System
Notice of Intent (NOI) for coverage under the Small Municipal Separate
Storm Sewer System (MS4) General Permit (PRR040000) for Puerto Rico

Part A. General Information

1. Name of Municipality or Organization: Municipality of Patillas
2. Type: Federal State Municipality Other: _____
3. Existing Permittee: Yes No If yes, provide EPA NPDES Permit Number: P R R 0 4 _____
4. Location Address:
 - a. Street: Calle Muños Rivera num. 17
 - b. City: Patillas State: PR Zip Code: 00723
5. Mailing Address:
 - a. Street: P O Box 698
 - b. City: Patillas State: PR Zip Code: 00723
6. Telephone Number: (787) 839-4120 Fax: _____
7. E-mail: wilma.lugo@municipiopatillas.com secpatillas@gmail.com
8. Standard Industrial Classification (SIC) Code (see instructions for common codes): 9 1 9 9
9. Latitude: (use the format provided.) Longitude: (use the format provided.)
Approximate center of the regulated portion of the MS4.
1 8 ° 0 0 ' 2 0 " N (degrees, minutes, seconds) 6 6 ° 0 0 ' 5 2 " W (degrees, minutes, seconds)
Or
_____ ° N (degrees decimal) _____ ° W (degrees decimal)

Part B. Primary MS4 Program Manager Contact Information

1. Name: Sra. Wilma Lugo
2. Position Title: Municipal Chief of Staff
3. Stormwater Management Program (SWMP) Location (web address or physical location): Calle Muñoz Rivera num. 17
4. Mailing Address:
 - a. Street: PO BOX 698
 - b. City: Patillas State: PR Zip Code: 00723

United States Environmental Protection Agency
National Pollutant Discharge Elimination System
Notice of Intent (NOI) for coverage under the Small Municipal Separate
Storm Sewer System (MS4) General Permit (PRR040000) for Puerto Rico

5. Telephone Number: 787-839-4120
6. E-mail: wilma.lugo@municipiopatillas.com secpatillas@gmail.com

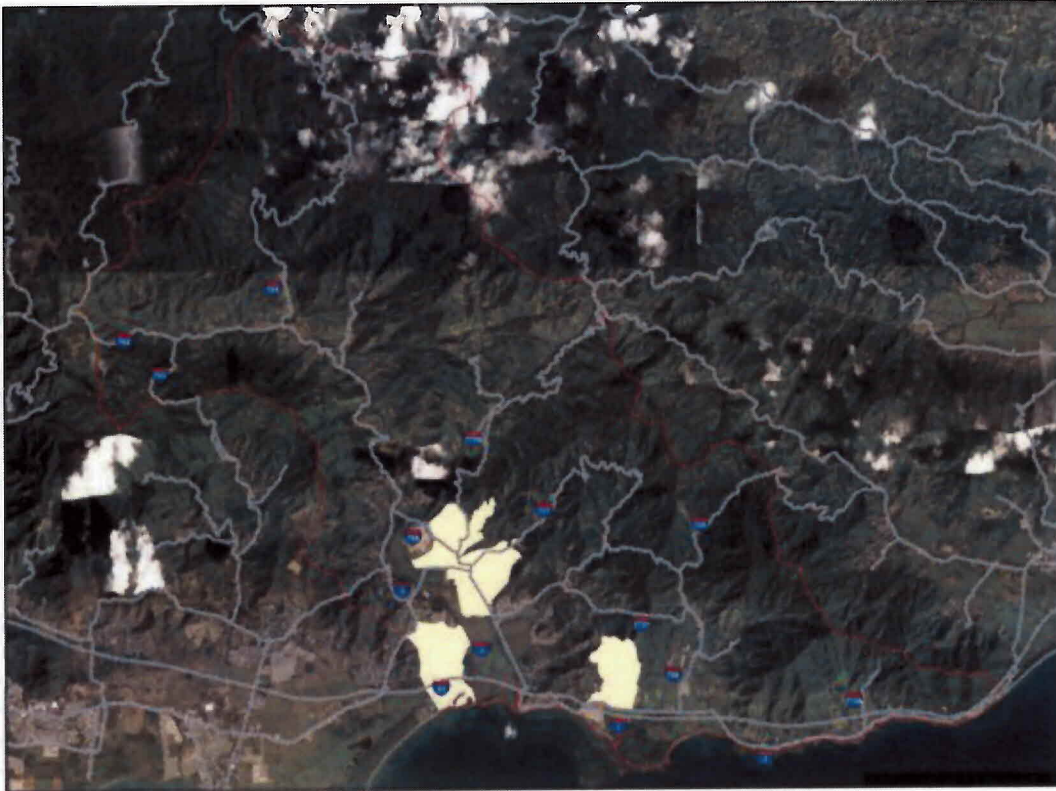
Part C. Eligibility Determination

1. Endangered Species Act (ESA) determination complete? (X) Yes No
- a. Eligibility Criteria (check all that apply): A (X) B C D E **Refer to appendix A**
2. National Historic Preservation Act (NHPA) determination complete? (X) Yes No
- a. Eligibility Criteria (check all that apply): (X) A B C D **Refer to appendix B**

Part D. Map/Boundaries

1. MS4/Organization Description of regulated boundaries (narrative): The Municipality covers an area of approximately 48.3 square miles of which 1.1 square miles are classified as urban area (for purposes of our +MS4 management plan, only the delineated urban area is considered the service area of the municipality storm sewer system.
2. Location Map/Boundaries. A location map must be attached showing the pertinent city, town, wards, or boundaries, the boundaries of the Small MS4, including surface water body(s), and the "urbanized area" (UA) when applicable.
- Is map attached? (X) Yes No

United States Environmental Protection Agency
National Pollutant Discharge Elimination System
Notice of Intent (NOI) for coverage under the Small Municipal Separate
Storm Sewer System (MS4) General Permit (PRR040000) for Puerto Rico



Part E. MS4 Infrastructure (if covered under the 2006 general permit)

1. Estimated Percent of Outfall Map Complete? (*Part 4.2.3 of 2006 general permit*): 0 %

a. If 100% of 2006 requirements are not met, enter an estimated date of completion:

JUL/2020

The local Department of Public Works does not own storm sewer infrastructure maps for the urban area of Patillas. As part of the proposed activities in the Storm Water Pollution Prevention Plan, a storm drain system map will be developed during the first four years of the implementation. Several communities with more than 500 people per site are known to exist in Patillas. The communities are Providencia, Palma, Lamboglia and Playa and most of them were established 1.5 miles from the Pueblo Ward. All these settlements have storm sewers and may have an impact in the Patillas Beach or nearby water bodies during significant rain events (more than 3 inches/24 hours period). Due to the high costs associated with this task, the Municipal Government of Patillas is proposing a five (5) year calendar to complete this action. Once completed, this map will aid the municipality in targeting outfalls with dry weather flows and other suspicious discharges for more in-depth inspection. Also this action will promote monitoring will help coordinate management activities to remove illicit connections and track storm drain system maintenance.

(MM/DD/YYYY)

b. Web address where MS4 map is published: N/A

United States Environmental Protection Agency
National Pollutant Discharge Elimination System
 Notice of Intent (NOI) for coverage under the Small Municipal Separate
 Storm Sewer System (MS4) General Permit (PRR040000) for Puerto Rico

If outfall map is unavailable on the internet an electronic or paper copy of the outfall map must be included with NOI submission.

Part F. Bylaw/Ordinance Development (if covered under the 2006 general permit)

1. Illicit Discharge Detection and Elimination (IDDE) authority adopted? Yes No
 - a. Effective Date or Estimated Date of Adoption: September/2010
(MM/DD/YYYY)

2. Construction/Erosion and Sediment Control authority adopted? Yes No
 - a. Effective Date or Estimated Date of Adoption: September/2010
(MM/DD/YYYY)

3. Post-Construction Stormwater Management adopted? Yes No
 - a. Effective Date or Estimated Date of Adoption: September/2010
(MM/DD/YYYY)

Part G. Receiving Waters

List the names of all surface waterbody segments to which your MS4 discharges. For each waterbody segment, please report the number of outfalls discharging into it and, if applicable, any impairments. You may attach additional information.

Waterbody Segment that receives flow from the MS4	Number of Outfalls into receiving waterbody segment	Have any monitoring been performed to outfalls? (Yes/No)	List of Pollutant(s) causing impairment (if applicable)	List of TMDL Pollutant (s) (if any)
Rio Grande de Patillas	9	NO		
Rio Marin	2	NO		
Rio Chico	2	NO		
Rio Jacoboa	2	NO		

United States Environmental Protection Agency
National Pollutant Discharge Elimination System
 Notice of Intent (NOI) for coverage under the Small Municipal Separate
 Storm Sewer System (MS4) General Permit (PRR040000) for Puerto Rico

Part H. Summary of Stormwater Management Program (SWMP) under the 2006 Small MS4 General Permit

For every measurable goal and associated Best Management Practice (BMP) listed in the adopted program, provide the following information (You may include additional pages):

BMP Description or BMP ID (e.g. MCM-1)	Goal Achieved? (Yes/No)	Continued in next permit cycle? (Yes/No)	Who was the targeted audience? Explain reason for not achieving goal.	Modification(s) to goals or BMP for next permit cycle
Storm water Education Brochure Distribution Campaign	NO	YES	General Public Goal was not reached due to lack of personnel and resources	Identify funds and staff to achieve the goal
Development of Educational and Outreach Material	NO	YES	General Public Goal was not reached due to lack of personnel and resources	Identify funds and staff to achieve the goal
Environmental Fair	NO	YES	General Public Goal was not reached due to lack of personnel and resources	Identify funds and staff to achieve the goal
Municipality Web page	NO	YES	General Public Goal was not reached due to lack of personnel and resources	Identify funds and staff to achieve the goal
Waterbodies cleanup	YES	YES	Municipal employees Department of Public Works	NO
Conferences to workshop	NO	YES	General Public Goal was not reached due to lack of personnel and resources	Identify funds and staff to achieve the goal
Illicit discharge and dumping training	NO	YES	General Public Goal was not reached due to lack of personnel and resources	Identify funds and staff to achieve the goal

United States Environmental Protection Agency
National Pollutant Discharge Elimination System
 Notice of Intent (NOI) for coverage under the Small Municipal Separate
 Storm Sewer System (MS4) General Permit (PRR040000) for Puerto Rico

Part I. 2016 Stormwater Management Program (SWMP) Summary

Public Education and Outreach (See Part 2.4.2 for detailed information of required BMPs):

BMP Description or BMP ID (e.g. MCM-1)	Education Topic (Identify the issue your BMP is educating the public about.)	Outreach Method (Describe the method used to convey this topic, e.g. mailing, events, school, etc.)	Measurable Goal (What is the end result of this program? What indicator will determine the goal has been met? (e.g., number mailing sent, people at event, class participation, etc.)
Municipal Environmental Committee	Storm Water Management	Train the personal in BMP's to help educate other employees	
Radio Public Announcement	Storm Water Management Program	Orientations through programs and radio interviews	
Storm Water Interagency Committee	Create an interagency committee to involve agencies in the planning and implementation process of the Storm Water Management Program.		

Part I. 2016 Stormwater Management Program (SWMP) Summary (continued)

Public Involvement and Participation (See Part 2.4.3 for detailed information of required BMPs):

BMP Description or BMP ID (e.g. MCM-1)	Program Description (Describe the program and how it will inspire public participation, e.g. special events, volunteer sampling and monitoring efforts, household hazardous waste recycling, etc.)	Measurable Goal (What is the end result of this program? What indicator will determine the goal has been met? (e.g., participation, amount of sampling performed, waste collected, etc.)
Storm Water Interagency Committee	Create an interagency committee to involve agencies in the planning and implementation process of the Storm Water Management Program.	Achieve the creation of projects in conjunction with the involved agencies, (DRNA, JP, and others)

United States Environmental Protection Agency
National Pollutant Discharge Elimination System
 Notice of Intent (NOI) for coverage under the Small Municipal Separate
 Storm Sewer System (MS4) General Permit (PRR040000) for Puerto Rico

Storm Water Volunteer Group	The municipality will recruit volunteers and train them to help sampling and identifying illegal discharges.	At least five participants
------------------------------------	---	-----------------------------------

Part I. 2016 Stormwater Management Program (SWMP) Summary (continued)

Illicit Discharge Detection and Elimination (See Part 2.4.4 for detailed information of required BMPs):

BMP Description or BMP ID (e.g. MCM-1)	Program Description (Describe the program and how it will identify and remove illicit connections from the MS4, e.g. new regulations, investigation practices, removal of illicit connections, etc.)	Measurable Goal (What is the end result of this program? What indicator will determine the goal has been met? (e.g., adoption of bylaws/ordinances, amount of investigation performed, identified and removed illicit connections, etc.)
Legal Prohibition and Enforcement	Locate problem areas, find the source, remove or correct illicit connections and document the course of action.	Maintain a record of the illicit discharges detected and removed/connected.
Plan to detect and eliminate illegal discharges	Provide to the community tools to denounce the situation such as telephone numbers and electronic address. Conduct field inspections. The information that this produces will be registered in the municipality. If there are illegal acts in water discharges this information will be used to reduce or stop the problem	It will be measured with the information of persons or entities that we identify
Legal Prohibition and Enforcement	Locate problem areas, find the source, remove or correct illicit connections and document the course of action.	Maintain a record of the illicit discharges detected and removed/connected.

United States Environmental Protection Agency
National Pollutant Discharge Elimination System
 Notice of Intent (NOI) for coverage under the Small Municipal Separate
 Storm Sewer System (MS4) General Permit (PRR040000) for Puerto Rico

Part I. 2016 Stormwater Management Program (SWMP) Summary (continued)

Construction Site Stormwater Runoff Control (See Part 2.4.5 for detailed information of required BMPs):

BMP Description or BMP ID (e.g. MCM-1)	Program Description (Describe the program and how it will help control stormwater runoff at construction sites, e.g. new regulations, construction practices, inspection protocols, etc.)	Measurable Goal (What is the end result of this program? What indicator will determine the goal has been met? (e.g., adoption of bylaws/ordinances, amount of inspections performed and sites actively regulated, etc.)
Implement of Erosion Control and sedimentation Prevention Measures	For any construction project with an greater than 900 meters must submit a control of erosion and sedimentation Plan. The measures in the Plan must be approved by the Environmental Quality Board.	Amount of side inspection s. Public ordinance in place procedures for site inspection implemented. Reduction of sedimentation of water bodies.
Project Inspections	Members of the Environmental Committee and other agencies may perform inspections on every project.	Amount of inspections per year made.

Part I. 2016 Stormwater Management Program (SWMP) Summary (continued)

Post-Construction Stormwater Management in New Development and Redevelopment (See Part 2.4.6 for detailed information of required BMPs):

BMP Description or BMP ID (e.g. MCM-1)	Program Description (Describe the program and how it will control stormwater runoff from properties after they are developed, e.g. new regulations, practices, or resources for contractors to use Low Impact Development (LID), etc.)	Measurable Goal (What is the end result of this program? What indicator will determine the goal has been met? (e.g., adoption of bylaws/ordinances, amount of implemented practices, development of capacity building resources, etc.)
Detention of infiltration	Collect and gather runoff and slowly realizing it to receiving waters or drainage system A group of employees will be oriented to verify the establishment of BMP in the projects in operation	Train all staff that will be performing inspections. All the private and Municipal projects must implement BMP's correctly. List of projects and inspection forms for when inspection and orientations are conducted for BMPs establishments.

United States Environmental Protection Agency
National Pollutant Discharge Elimination System
 Notice of Intent (NOI) for coverage under the Small Municipal Separate
 Storm Sewer System (MS4) General Permit (PRR040000) for Puerto Rico

Part I. 2016 Stormwater Management Program (SWMP) Summary (continued)

Good Housekeeping and Pollution Prevention in Municipal Operations (See Part 2.4.7 for detailed information of required BMPs):

BMP Description or BMP ID (e.g. MCM-1)	Program Description (Describe the program and how it will mitigate stormwater runoff at municipal properties or through municipal activities, e.g. installation of structural stormwater controls on the municipal properties, new practices to reduce pollutant exposure to rain events, runoff management, trainings, etc.)	Measurable Goal (What is the end result of this program? What indicator will determine the goal has been met? (e.g., structural BMPs installed, SOPs developed and implemented, etc.)
Develop and implement an operation and maintenance program with good housekeeping measures	Training programs for employees in charge of maintenance and management of Municipal Public Works Department. Perform inspections an Municipal facilities.	Train all the municipal employees of the Municipal Public Works Department.

Part J. Application Certification and Signature

I certify under penalty of law that this document and all attachments were prepared under my direction or supervision in accordance with a system designed to assure that qualified personnel properly gathered and evaluated the information submitted. Based on my inquiry of the person or persons who manage the system, or those persons directly responsible for gathering the information, the information submitted is, to the best of my knowledge and belief, true, accurate, and complete. I am aware that there are significant penalties for submitting false information, including the possibility of fine and imprisonment for knowing violations.

Signature of Mayor/Elected Official: 

Print Name of Mayor/Elected Official: Hon. Norberto Soto Figueroa

Title: Mayor of Patillas

Date: 23/may/18

United States Environmental Protection Agency

National Pollutant Discharge Elimination System

Notice of Intent (NOI) for coverage under the Small Municipal Separate
Storm Sewer System (MS4) General Permit (PRR040000) for Puerto Rico

Appendix A



United States Department of the Interior



FISH AND WILDLIFE SERVICE
Caribbean Ecological Services Field Office
Post Office Box 491
Boqueron, PR 00622-0491
Phone: (787) 851-7297 Fax: (787) 851-7440
<http://www.fws.gov/caribbean/es>

In Reply Refer To:
Consultation Code: 04EC1000-2018-SLI-0358
Event Code: 04EC1000-2018-E-00581
Project Name: Municipality of Patillas

May 02, 2018

Subject: List of threatened and endangered species that may occur in your proposed project location, and/or may be affected by your proposed project

To Whom It May Concern:

THE FOLLOWING SPECIES LIST IS NOT A SECTION 7 CONSULTATION. PLEASE CONTACT OUR OFFICE TO COMPLETE THE CONSULTATION PROCESS

The purpose of the Endangered Species Act (Act) is to provide a means whereby threatened and endangered species and the ecosystems upon which they depend may be conserved. Under sections 7(a)(1) and 7(a)(2) of the Act and its implementing regulations (50 CFR 402 et seq.), Federal agencies are required to utilize their authorities to carry out programs for the conservation of threatened and endangered species and to determine whether projects may affect those species and/or their designated critical habitat.

Federal agencies are required to "request of the Secretary of Interior information whether any species which is listed or proposed to be listed may be present in the area of a proposed action". The enclosed species list provides information to assist with the consultation process with the U.S. Fish and Wildlife Service (Service) under section 7 of the Act. However, the enclosed species list **does not complete the required consultation process**. The species list identifies threatened, endangered, proposed and candidate species, as well as proposed and designated critical habitats, that may occur within the boundary of your proposed project and/or may be affected by your proposed project.

A discussion between the Federal agency and the Service should include what types of listed species may occur in the proposed action area, and what effect the proposed action may have on those species. This process initiates informal consultation.

When a Federal agency, after discussions with the Service, determines that the proposed action is not likely to adversely affect any listed species, or adversely modify any designated critical habitat, and the Service concurs, the informal consultation is complete and the proposed project moves ahead. If the proposed action is suspected to affect a listed species or modify designated critical habitat, the Federal agency may then prepare a Biological Assessment (BA) to assist in its determination of the project's effects on species and their habitat.

However, a BA is required for construction projects (or other undertakings having similar physical impacts) that are major Federal actions significantly affecting the quality of the human environment as defined in the National Environmental Policy Act (42 U.S.C. 4332(2) (c)). For projects other than major construction activities, the Service suggests that a biological evaluation similar to a BA where the agency provides the Service with an evaluation on the likely effects of the action to determine whether the project may affect listed or proposed species and/or designated or proposed critical habitat. Recommended contents of a BA are described at 50 CFR 402.12.

If a Federal agency determines, based on its BA or biological evaluation, that listed species and/or designated critical habitat may be affected by the proposed project, the agency is required to further consult with the Service pursuant to 50 CFR 402. In addition, the Service recommends that candidate species, proposed species, and proposed critical habitat be addressed within the consultation process.

More information on the regulations and procedures for section 7 consultation, including the role of permit or license applicants, can be found in the "Endangered Species Consultation Handbook" at:

<http://www.fws.gov/endangered/esa-library/pdf/TOC-GLOS.PDF>

New information based on updated surveys, changes in the abundance and distribution of species, changed habitat conditions, or other factors could change this list. Please feel free to contact us if you need more current information or assistance regarding the potential impacts to federally proposed, listed, and candidate species and federally designated and proposed critical habitat. Please note that under 50 CFR 402.12(e) of the regulations implementing section 7 of the Act, the accuracy of this species list should be verified after 90 days. This verification can be completed formally or informally as desired. The Service recommends that verification be completed by visiting the ECOS-IPaC website at regular intervals during project planning and implementation for updates to species lists and information. An updated list may be requested through the ECOS-IPaC system by completing the same process used to receive the enclosed list.

Additionally, wind energy projects should follow the wind energy guidelines (<http://www.fws.gov/windenergy/>) for minimizing impacts to migratory birds and bats.

Guidance for minimizing impacts to migratory birds for projects including communications towers (e.g., cellular, digital television, radio, and emergency broadcast) can be found at:

<http://www.fws.gov/migratorybirds/CurrentBirdIssues/Hazards/towers/towers.htm>; <http://www.towerkill.com>; and <http://www.fws.gov/migratorybirds/CurrentBirdIssues/Hazards/towers/comtow.html>.

We appreciate your concern for threatened and endangered species. The Service encourages Federal agencies to include conservation of threatened and endangered species into their project planning to further the purposes of the Act. Please include the Consultation Tracking Number in the header of this letter with any request for consultation or correspondence about your project that you submit to our office.

For more information:

U.S. Fish and Wildlife Service

Caribbean Ecological Services Field Office

Road 301, Km. 5.1 / Bo. Corozo

Boquern, PR 00622

Telephone: (787) 851-7297

Fax: (787) 851-7440

Email: caribbean_es@fws.gov

<http://www.fws.gov/caribbean/es>

Send all documents to:

U.S. Fish and Wildlife Service

P.O. Box 491

Boquern, Puerto Rico 00622

Attachment(s):

- Official Species List
- USFWS National Wildlife Refuges and Fish Hatcheries
- Migratory Birds
- Wetlands

Official Species List

This list is provided pursuant to Section 7 of the Endangered Species Act, and fulfills the requirement for Federal agencies to "request of the Secretary of the Interior information whether any species which is listed or proposed to be listed may be present in the area of a proposed action".

This species list is provided by:

Caribbean Ecological Services Field Office

Post Office Box 491

Boqueron, PR 00622-0491

(787) 851-7297

Project Summary

Consultation Code: 04EC1000-2018-SLI-0358

Event Code: 04EC1000-2018-E-00581

Project Name: Municipality of Patillas

Project Type: ** OTHER **

Project Description: EPA NPDES MS4 NOI

Project Location:

Approximate location of the project can be viewed in Google Maps: <https://www.google.com/maps/place/17.99465021610275N66.0067449685564W>



Counties: Arroyo, PR | Patillas, PR

Endangered Species Act Species

There is a total of 9 threatened, endangered, or candidate species on this species list.

Species on this list should be considered in an effects analysis for your project and could include species that exist in another geographic area. For example, certain fish may appear on the species list because a project could affect downstream species.

IPaC does not display listed species or critical habitats under the sole jurisdiction of NOAA Fisheries¹, as USFWS does not have the authority to speak on behalf of NOAA and the Department of Commerce.

See the "Critical habitats" section below for those critical habitats that lie wholly or partially within your project area under this office's jurisdiction. Please contact the designated FWS office if you have questions.

-
1. [NOAA Fisheries](#), also known as the National Marine Fisheries Service (NMFS), is an office of the National Oceanic and Atmospheric Administration within the Department of Commerce.

Mammals

NAME	STATUS
West Indian Manatee <i>Trichechus manatus</i> There is final critical habitat for this species. Your location is outside the critical habitat. <i>This species is also protected by the Marine Mammal Protection Act, and may have additional consultation requirements.</i> Species profile: https://ecos.fws.gov/ecp/species/4469	Threatened

Birds

NAME	STATUS
Puerto Rican Broad-winged Hawk <i>Buteo platypterus brunnescens</i> No critical habitat has been designated for this species. Species profile: https://ecos.fws.gov/ecp/species/5512	Endangered
Puerto Rican Sharp-shinned Hawk <i>Accipiter striatus venator</i> No critical habitat has been designated for this species. Species profile: https://ecos.fws.gov/ecp/species/604	Endangered

Reptiles

NAME	STATUS
<p>Hawksbill Sea Turtle <i>Eretmochelys imbricata</i></p> <p>There is final critical habitat for this species. Your location is outside the critical habitat. Species profile: https://ecos.fws.gov/ecp/species/3656 General project design guidelines: https://ecos.fws.gov/ipac/guideline/design/population/153/office/41430.pdf</p>	Endangered
<p>Leatherback Sea Turtle <i>Dermochelys coriacea</i></p> <p>There is final critical habitat for this species. Your location is outside the critical habitat. Species profile: https://ecos.fws.gov/ecp/species/1493 General project design guidelines: https://ecos.fws.gov/ipac/guideline/design/population/154/office/41430.pdf</p>	Endangered
<p>Puerto Rican Boa <i>Epicrates inornatus</i></p> <p>No critical habitat has been designated for this species. Species profile: https://ecos.fws.gov/ecp/species/6628 General project design guidelines: https://ecos.fws.gov/ipac/guideline/design/population/156/office/41430.pdf</p>	Endangered

Amphibians

NAME	STATUS
<p>Guajon <i>Eleutherodactylus cooki</i></p> <p>There is final critical habitat for this species. Your location is outside the critical habitat. Species profile: https://ecos.fws.gov/ecp/species/6963</p>	Threatened

Flowering Plants

NAME	STATUS
<p>Palo De Jazmin <i>Styrax portoricensis</i></p> <p>No critical habitat has been designated for this species. Species profile: https://ecos.fws.gov/ecp/species/7496</p>	Endangered
<p>Uvillo <i>Eugenia haematocarpa</i></p> <p>No critical habitat has been designated for this species. Species profile: https://ecos.fws.gov/ecp/species/4279</p>	Endangered

Critical habitats

THERE ARE NO CRITICAL HABITATS WITHIN YOUR PROJECT AREA UNDER THIS OFFICE'S JURISDICTION.

USFWS National Wildlife Refuge Lands And Fish Hatcheries

Any activity proposed on lands managed by the [National Wildlife Refuge](#) system must undergo a 'Compatibility Determination' conducted by the Refuge. Please contact the individual Refuges to discuss any questions or concerns.

THERE ARE NO REFUGE LANDS OR FISH HATCHERIES WITHIN YOUR PROJECT AREA.

Migratory Birds

Certain birds are protected under the Migratory Bird Treaty Act¹ and the Bald and Golden Eagle Protection Act².

Any person or organization who plans or conducts activities that may result in impacts to migratory birds, eagles, and their habitats should follow appropriate regulations and consider implementing appropriate conservation measures, as described [below](#).

-
1. The [Migratory Birds Treaty Act](#) of 1918.
 2. The [Bald and Golden Eagle Protection Act](#) of 1940.
 3. 50 C.F.R. Sec. 10.12 and 16 U.S.C. Sec. 668(a)

THERE ARE NO FWS MIGRATORY BIRDS OF CONCERN WITHIN THE VICINITY OF YOUR PROJECT AREA.

Migratory Birds FAQ

Tell me more about conservation measures I can implement to avoid or minimize impacts to migratory birds.

[Nationwide Conservation Measures](#) describes measures that can help avoid and minimize impacts to all birds at any location year round. Implementation of these measures is particularly important when birds are most likely to occur in the project area. When birds may be breeding in the area, identifying the locations of any active nests and avoiding their destruction is a very helpful impact minimization measure. To see when birds are most likely to occur and be breeding in your project area, view the Probability of Presence Summary. [Additional measures](#) and/or [permits](#) may be advisable depending on the type of activity you are conducting and the type of infrastructure or bird species present on your project site.

What does IPaC use to generate the migratory birds potentially occurring in my specified location?

The Migratory Bird Resource List is comprised of USFWS [Birds of Conservation Concern \(BCC\)](#) and other species that may warrant special attention in your project location.

The migratory bird list generated for your project is derived from data provided by the [Avian Knowledge Network \(AKN\)](#). The AKN data is based on a growing collection of [survey, banding, and citizen science datasets](#) and is queried and filtered to return a list of those birds reported as occurring in the 10km grid cell(s) which your project intersects, and that have been identified as warranting special attention because they are a BCC species in that area, an eagle ([Eagle Act](#) requirements may apply), or a species that has a particular vulnerability to offshore activities or development.

Again, the Migratory Bird Resource list includes only a subset of birds that may occur in your project area. It is not representative of all birds that may occur in your project area. To get a list of all birds potentially present in your project area, please visit the [E-bird Explore Data Tool](#).

What does IPaC use to generate the probability of presence graphs for the migratory birds potentially occurring in my specified location?

The probability of presence graphs associated with your migratory bird list are based on data provided by the [Avian Knowledge Network \(AKN\)](#). This data is derived from a growing collection of [survey, banding, and citizen science datasets](#).

Probability of presence data is continuously being updated as new and better information becomes available. To learn more about how the probability of presence graphs are produced and how to interpret them, go to the Probability of Presence Summary and then click on the "Tell me about these graphs" link.

How do I know if a bird is breeding, wintering, migrating or present year-round in my project area?

To see what part of a particular bird's range your project area falls within (i.e. breeding, wintering, migrating or year-round), you may refer to the following resources: [The Cornell Lab of Ornithology All About Birds Bird Guide](#), or (if you are unsuccessful in locating the bird of interest there), the [Cornell Lab of Ornithology Neotropical Birds guide](#). If a bird on your migratory bird species list has a breeding season associated with it, if that bird does occur in your project area, there may be nests present at some point within the timeframe specified. If "Breeds elsewhere" is indicated, then the bird likely does not breed in your project area.

What are the levels of concern for migratory birds?

Migratory birds delivered through IPaC fall into the following distinct categories of concern:

1. "BCC Rangewide" birds are [Birds of Conservation Concern](#) (BCC) that are of concern throughout their range anywhere within the USA (including Hawaii, the Pacific Islands, Puerto Rico, and the Virgin Islands);
2. "BCC - BCR" birds are BCCs that are of concern only in particular Bird Conservation Regions (BCRs) in the continental USA; and
3. "Non-BCC - Vulnerable" birds are not BCC species in your project area, but appear on your list either because of the [Eagle Act](#) requirements (for eagles) or (for non-eagles) potential susceptibilities in offshore areas from certain types of development or activities (e.g. offshore energy development or longline fishing).

Although it is important to try to avoid and minimize impacts to all birds, efforts should be made, in particular, to avoid and minimize impacts to the birds on this list, especially eagles and BCC species of rangewide concern. For more information on conservation measures you can implement to help avoid and minimize migratory bird impacts and requirements for eagles, please see the FAQs for these topics.

Details about birds that are potentially affected by offshore projects

For additional details about the relative occurrence and abundance of both individual bird species and groups of bird species within your project area off the Atlantic Coast, please visit the [Northeast Ocean Data Portal](#). The Portal also offers data and information about other taxa besides birds that may be helpful to you in your project review. Alternately, you may download the bird model results files underlying the portal maps through the [NOAA NCCOS Integrative Statistical Modeling and Predictive Mapping of Marine Bird Distributions and Abundance on the Atlantic Outer Continental Shelf](#) project webpage.

Bird tracking data can also provide additional details about occurrence and habitat use throughout the year, including migration. Models relying on survey data may not include this information. For additional information on marine bird tracking data, see the [Diving Bird Study](#) and the [nanotag studies](#) or contact [Caleb Spiegel](#) or [Pam Loring](#).

What if I have eagles on my list?

If your project has the potential to disturb or kill eagles, you may need to [obtain a permit](#) to avoid violating the Eagle Act should such impacts occur.

Proper Interpretation and Use of Your Migratory Bird Report

The migratory bird list generated is not a list of all birds in your project area, only a subset of birds of priority concern. To learn more about how your list is generated, and see options for identifying what other birds may be in your project area, please see the FAQ “What does IPaC use to generate the migratory birds potentially occurring in my specified location”. Please be aware this report provides the “probability of presence” of birds within the 10 km grid cell(s) that overlap your project; not your exact project footprint. On the graphs provided, please also look carefully at the survey effort (indicated by the black vertical bar) and for the existence of the “no data” indicator (a red horizontal bar). A high survey effort is the key component. If the survey effort is high, then the probability of presence score can be viewed as more dependable. In contrast, a low survey effort bar or no data bar means a lack of data and, therefore, a lack of certainty about presence of the species. This list is not perfect; it is simply a starting point for identifying what birds of concern have the potential to be in your project area, when they might be there, and if they might be breeding (which means nests might be present). The list helps you know what to look for to confirm presence, and helps guide you in knowing when to implement conservation measures to avoid or minimize potential impacts from your project activities, should presence be confirmed. To learn more about conservation measures, visit the FAQ “Tell me about conservation measures I can implement to avoid or minimize impacts to migratory birds” at the bottom of your migratory bird trust resources page.

Wetlands

Impacts to [NWI wetlands](#) and other aquatic habitats may be subject to regulation under Section 404 of the Clean Water Act, or other State/Federal statutes.

For more information please contact the Regulatory Program of the local [U.S. Army Corps of Engineers District](#).

Please note that the NWI data being shown may be out of date. We are currently working to update our NWI data set. We recommend you verify these results with a site visit to determine the actual extent of wetlands on site.

ESTUARINE AND MARINE DEEPWATER

- [M1RF1/AB3L](#)
- [E1UBL](#)
- [M1AB3/UB2L](#)

ESTUARINE AND MARINE WETLAND

- [E2FO3N](#)
- [E2EM1N](#)
- [E2FO3M](#)
- [E2EM1P](#)
- [E2USP](#)
- [M2AB3/US2M](#)

FRESHWATER EMERGENT WETLAND

- [PEM1A](#)
- [PEMIC](#)

FRESHWATER FORESTED/SHRUB WETLAND

- [PFO3A](#)
- [PSS3/EM1A](#)

FRESHWATER POND

- [PUBh](#)
- [PUB](#)

LAKE

- [L1UBHh](#)
- [L](#)

RIVERINE

- [R4SBC](#)

Species determinations

For listed species¹ not covered by determination keys, an impact analysis should be performed to reach a conclusion about how this project will impact the species.

These conclusions will result in *determinations* for each species, which will be used in consultation with the U.S. Fish and Wildlife Service.

Mammals

West Indian Manatee Trichechus manatus	None
---	------

Birds

Puerto Rican Broad-winged Hawk Buteo platypterus brunnescens	None
---	------

Puerto Rican Sharp-shinned Hawk Accipiter striatus venator	None
---	------

Reptiles

Hawksbill Sea Turtle Eretmochelys imbricata	None
--	------

Leatherback Sea Turtle Dermochelys coriacea	None
--	------

Puerto Rican Boa Epicrates inornatus	None
---	------

Amphibians

Guajon

Eleutherodactylus cooki

None

Flowering Plants

Palo De Jazmin

Styrax portoricensis

None

Uvillo

Eugenia haematocarpa

None

Critical habitats

THERE ARE NO CRITICAL HABITATS AT THIS LOCATION.

1. Species listed under the Endangered Species Act are threatened or endangered; IPaC also shows species that are candidates, or proposed, for listing. See the listing status page for more information.

United States Environmental Protection Agency
National Pollutant Discharge Elimination System
Notice of Intent (NOI) for coverage under the Small Municipal Separate
Storm Sewer System (MS4) General Permit (PRR040000) for Puerto Rico

Appendix B

**NATIONAL REGISTER
HOME**

[About Us »](#)

[NR Fundamentals »](#)

[How to List a Property »](#)

[Weekly List »](#)

[Database / Research »](#)

[Publications »](#)

[Guidance »](#)

[Frequently Asked Questions
»](#)

[Features / What's New »](#)

[Sample Nominations »](#)

[Preservation Links »](#)

[Contact Us »](#)

[For Travelers »](#)

[For Teachers »](#)

Search

CONNECT WITH US

National Register

[Facebook](#)

[Flickr](#)

**NATIONAL PARK
SERVICE**

[Facebook](#)

[iTunes](#)

[Twitter](#)

[YouTube](#)

National Register of Historic Places Program: Telling Stories of All Americans

The National Register of Historic Places is the official list of the Nation's historic places worthy of preservation. Authorized by the National Historic Preservation Act of 1966, the National Park Service's National Register of Historic Places is part of a national program to coordinate and support public and private efforts to identify, evaluate, and protect America's historic and archeological resources.

The United States of America is the most culturally diverse nation on earth. People from all over the world have come together to create this country, and they continue to arrive here from many corners of the earth. The National Register of Historic Places recognizes the historic places and stories of this diverse cultural heritage.

New National Register listings that highlight the stories of all Americans

From weekly list of June 7, 2013

VIRGINIA, NOTTOWAY COUNTY,

Hyde Park,

6808 W. Courthouse Rd.,

Burkeville, 13000341,

LISTED, 5/28/13

Associated with Jewish and Polish Heritage

From weekly list of May 3, 2013

NEBRASKA, KEARNEY COUNTY,

Bethphage Mission,

1044 23rd Rd.,

Axtell vicinity, 13000199,

LISTED, 4/24/13

Associated with disabled Americans

From weekly list of April 19, 2013

NEW HAMPSHIRE, GRAFTON COUNTY,

Camp Ossipee,

11 & 13 Porter Rd.,

Holderness, 13000154,

LISTED, 4/10/13

(Squam MPS)

From weekly list of April 26, 2013

CONNECTICUT, WINDHAM COUNTY,

Temple Beth Israel,

39 Killingly Dr.,

Danielson, 13000162,

LISTED, 4/16/13

Associated with Jewish Heritage

From weekly list of April 19, 2013

CALIFORNIA, PLACER COUNTY,

Burns, Irene, House,

405 Linden Ave.,

Auburn, 13000141,

LISTED, 4/09/13

(Auburn, CA MPS)

Associated with Women's History

From the weekly list of December 21, 2012

GUAM, GUAM COUNTY,
Agat World War II Amtrac,
Address Restricted
Agat vicinity, 11000880,
LISTED, 12/13/11

PENNSYLVANIA, CHESTER COUNTY,
St. Paul African Methodist Episcopal Church,
703 Merchant St.,
Coatesville, 12001042,
LISTED, 12/12/12

WEST VIRGINIA, GREENBRIER COUNTY,
Edgefield,
461 Brownstown Rd.,
Renick, 12001047,
LISTED, 12/12/12

Highlighted in our weekly feature

From the weekly list of December 14, 2012

AMERICAN SAMOA, WESTERN DISTRICT,
Afao Beach Site,
Afao Beach,
Afao vicinity, 12000916,
LISTED, 11/14/12

AMERICAN SAMOA, WESTERN DISTRICT,
Poloa Defensive Fortifications,
Poloa Beach,
Poloa vicinity, 12000917,
LISTED, 11/14/12

From the weekly list of December 7, 2012

AMERICAN SAMOA, EASTERN DISTRICT,
Masefau Defensive Fortifications,
Masefau Beach,
Masefau vicinity, 12000919,
LISTED, 11/14/12
GUAM, GUAM COUNTY,

Malesso Japanese Rice Mill,
Jesus Barcinas Rd.,
Merizo, 12000973,
LISTED, 11/28/12

From the weekly list of November 23, 2012

PUERTO RICO, AGUAS BUENAS MUNICIPALITY,
Parque de Bombas Maximiliano Merced,
42 Munoz Rivera St.,
Aguas Buenas, 12000934,
LISTED, 11/14/12
(Fire Stations in Puerto Rico MPS)


PUERTO RICO, FLORIDA MUNICIPALITY,
De Luxe Florida,
PR 642, KM 11.1,
Florida vicinity, 12000935,
LISTED, 11/14/12
(Early Prototypes for Manufacturing Plants in Puerto Rico, 1948-1958 MPS)

PUERTO RICO, GUAYANILLA MUNICIPALITY,
Padre Nazario School,
4 Concepcion St.,
Guayanilla, 12000936,

LISTED, 11/14/12
(Early 20th Century Schools in Puerto Rico MPS)

PUERTO RICO, JUNCOS MUNICIPALITY,
Gallardo, Jose Miguel, School,
Jct. of Paseo Escute Final & Algarin St.,
Juncos vicinity, 12000937,
LISTED, 11/14/12
(Early 20th Century Schools in Puerto Rico MPS)

PUERTO RICO, LUQUILLO MUNICIPALITY,
Williams Products Corporation,
PR 992, KM 0.3,
Luquillo vicinity, 12000938,
LISTED, 11/14/12
(Early Prototypes for Manufacturing Plants in Puerto Rico, 1948-1958 MPS)

 PUERTO RICO, PATILLAS MUNICIPALITY,
Semidey, Maria Davila, School,
300 Munoz Rivera St.,
Patillas vicinity, 12000939,
LISTED, 11/14/12
(Early 20th Century Schools in Puerto Rico MPS)

PUERTO RICO, PENUELAS MUNICIPALITY,
Webster, Daniel, School,
255 Luis Munoz Rivera St.,
Penuelas vicinity, 12000940,
LISTED, 11/14/12
(Early 20th Century Schools in Puerto Rico MPS)

National Historic Landmarks Designated October 17/2012

Including:

César E. Chávez National Monument at Nuestra Señora Reina de la Paz in Keene, Calif
The Drakes Bay Historic and Archeological District, Point Reyes Station, Calif.
The Hispanic Society of America Complex, New York City, N.Y.
San José de los Jémez Mission and Giusewa Pueblo Site, N.M.
Farragut, Admiral David Glasgow, Gravesite, Bronx County, N.Y.
The United States Post Office and Court House (the U.S. District Court for the Central District of California), Los Angeles, Calif.

From the weekly list of October 5, 2012

CALIFORNIA, LOS ANGELES COUNTY,
Yamashiro Historic District,
1999 N. Sycamore St.,
Los Angeles, 12000811,
LISTED, 9/25/12

MASSACHUSETTS, ESSEX COUNTY,
Pinkham, Lydia, House,
285 Western Ave.,
Lynn, 12000818,
LISTED, 9/25/12

From the weekly list of September 14, 2012:

NEW JERSEY, ESSEX COUNTY,
Woman's Club of Upper Montclair,
200 Cooper Ave.,
Montclair, 12000594,
LISTED, 9/04/12
(Clubhouses of New Jersey Women's Clubs)

PENNSYLVANIA, ALLEGHENY COUNTY,
Ursuline Young Ladies Academy,
201 S. Winebiddle St.,
Pittsburgh, 12000604,
LISTED, 9/04/12

From the weekly list of September 7, 2012:

NORTH CAROLINA, FORSYTH COUNTY,
Hanes, Robert M., House,
140 N. Stratford Rd.,
Winston-Salem, 12000573,
LISTED, 8/28/12
(Significant for Ellen Biddle Shipman, landscape architect)
Highlighted as our Weekly Feature

PUERTO RICO, BARCELONETA MUNICIPALITY,
Maceira, Rafael Balseiro, School,
Georgetti St. No. 1,
Barceloneta vicinity, 12000583,
LISTED, 8/28/12
(Early Twentieth Century Schools in Puerto Rico TR)
Highlighted in our **"Back to School"** web feature

PUERTO RICO, CIDRA MUNICIPALITY,
La Bolero,
PR 173, 0.5km,
Cidra vicinity, 12000584,
LISTED, 8/28/12
(Early Prototypes for Manufacturing Plants in Puerto Rico, 1948-1958 MPS)

PUERTO RICO, MOROVIS MUNICIPALITY,
Fontan, Jose, School,
Del Carmen St. corner with calle principal final,
Morovis vicinity, 12000582,
LISTED, 8/28/12
(Early Twentieth Century Schools in Puerto Rico TR)
Highlighted in our **"Back to School"** web feature

TEXAS, TARRANT COUNTY,
Foster, Eldred W., House,
9608 Heron Dr.,
Fort Worth, 12000589,
LISTED, 8/28/12

Asian American/Pacific Islander Theme Study

The National Historic Landmarks Program is working with the Organization of American Historians on a theme study which will help the National Park Service to identify sites dealing with Asian American/Pacific Islander history which may have the potential to be designated as National Historic Landmarks or to be listed in the National Register of Historic Places.

Women's History:

The National Historic Landmarks Program is working with the National Collaborative for Women's History Sites to locate, research and prepare nominations for three sites dealing with women's history.

From the weekly list of August 31, 2012:

VIRGINIA, AUGUSTA COUNTY,
Mt. Airy,
Access Rd. off of Technology Dr.
Verona, 12000538,
LISTED, 8/22/12
(Grandma Moses House)
Highlighted as a Weekly Highlight

From the weekly list of August 24, 2012:

VIRGINIA, ALEXANDRIA INDEPENDENT CITY,
Contrabands and Freedmen Cemetery,
1001 S. Washington St.,
Alexandria (Independent City), 12000516,
LISTED, 8/15/12

From the weekly list of August 17, 2012:

PUERTO RICO, MULTIPLE COUNTIES,
Early Prototypes for Manufacturing Plants in Puerto Rico MPS,
64501150,
COVER DOCUMENTATION APPROVED, 8/07/12

PUERTO RICO, MULTIPLE COUNTIES,
Fire Stations in Puerto Rico MPS,
64501151,
COVER DOCUMENTATION APPROVED, 8/06/12

From the weekly list of August 10, 2012:

PUERTO RICO, MULTIPLE COUNTIES,
Early 20th Century Schools in Puerto Rico MPS,
64501149,
COVER DOCUMENTATION APPROVED, 8/02/12
Associated with Hispanic Heritage
Featured in our "Back to School" web feature

PUERTO RICO, SAN JUAN MUNICIPALITY,
Distrito Historico del Viejo San Juan—Old San Juan Historic District (Boundary Increase),
Roughly bounded by Avenidas Munoz Rivera & Ponce de Leon, Paseo de Covadonga and Calles J. A.
Corretejer, Recinto Sur,
San Juan, 12000465,
LISTED, 7/30/12

PUERTO RICO, SAN JUAN MUNICIPALITY,
Distrito Historico del Viejo San Juan—Old San Juan Historic District,
NW triangle of the islet of San Juan,
San Juan, 72001553,
ADDITIONAL DOCUMENTATION APPROVED, 7/30/12
Featured as our Weekly Highlight

From the weekly list of August 3, 2012:

MINNESOTA, HENNEPIN COUNTY,
Quinlan, Elizabeth C., House
1711 Emerson Ave., S.,
Minneapolis, 12000428,
LISTED, 7/25/12
Featured as our Weekly Highlight

From the weekly list of July 13, 2012:

COLORADO, HUERFANO COUNTY,
Montoya Ranch,
19176 CO 69,
Farrista, 12000377,
LISTED, 7/03/12

Web Features

The National Register website has "feature months" that highlight the different kinds of communities represented throughout the United States:

African American History Month (February)

Visit this National Register feature that showcases publications, historic properties listed in the National Register, and National Park units commemorating the events and people, the designs and achievements that help illustrate African American contributions to American history.

Women's History Month (March)

This National Register feature showcases historic properties listed in the National Register, National Register publications, and National Park units commemorating the events and people, as well as the designs and achievements illustrating the contribution of women to American history.

Asian Pacific American Heritage Month (May)

In this National Register feature, learn about historic places listed in the National Register, just a few of the publications, and National Park units significant for their association with the remarkable history and achievements of Asian and Pacific Americans.

Jewish American Heritage Month (May)

The National Register of Historic Places is pleased to promote awareness of and appreciation for the historical accomplishments of Jewish Americans during Jewish American Heritage Month.

Hispanic Heritage (September 15–October 15)

Visit this National Register feature highlighting various publications, properties listed in the National Register, and National Parks that deal directly with the ingenuity, creativity, and cultural and political experiences of Hispanic Americans.

Explore American Indian Heritage Month (November)

This feature highlights various publications, properties listed in the National Register, and National Parks that recognize the events and lifeways, the designs and achievements of American Indians.

Quicklinks

[Search the National Register Database](#)

[Find out what we listed this past week](#)

[What's New / Features](#)



nps.gov

EXPERIENCE YOUR AMERICA™

[Site Index](#) [Frequency Asked Questions](#) [Contact Us](#) [Disclaimer](#) [Accessibility](#)
[Visual Heritage](#) [Privacy](#) [FOIA](#) [Policies](#) [USA](#) [USA.gov](#) [No Fear Act](#) [OmniBus](#)

[U.S. Department of the Interior](#) [National Park Service](#) [Home](#)

National Register of Hist...

National Park Service
U.S. Department of the Interior

Public, non-restricted data depicting National Register spatial dat...

