

Modified Health Impact Assessments (HIA) for Two Environmental Justice Communities in New Orleans, Louisiana and Mobile, Alabama

*Joey Danielle Batts - Chemistry Major - Junior
Tennessee State University*



Purpose and Objectives

- To Identify
- To inform
- To provide possible resolution



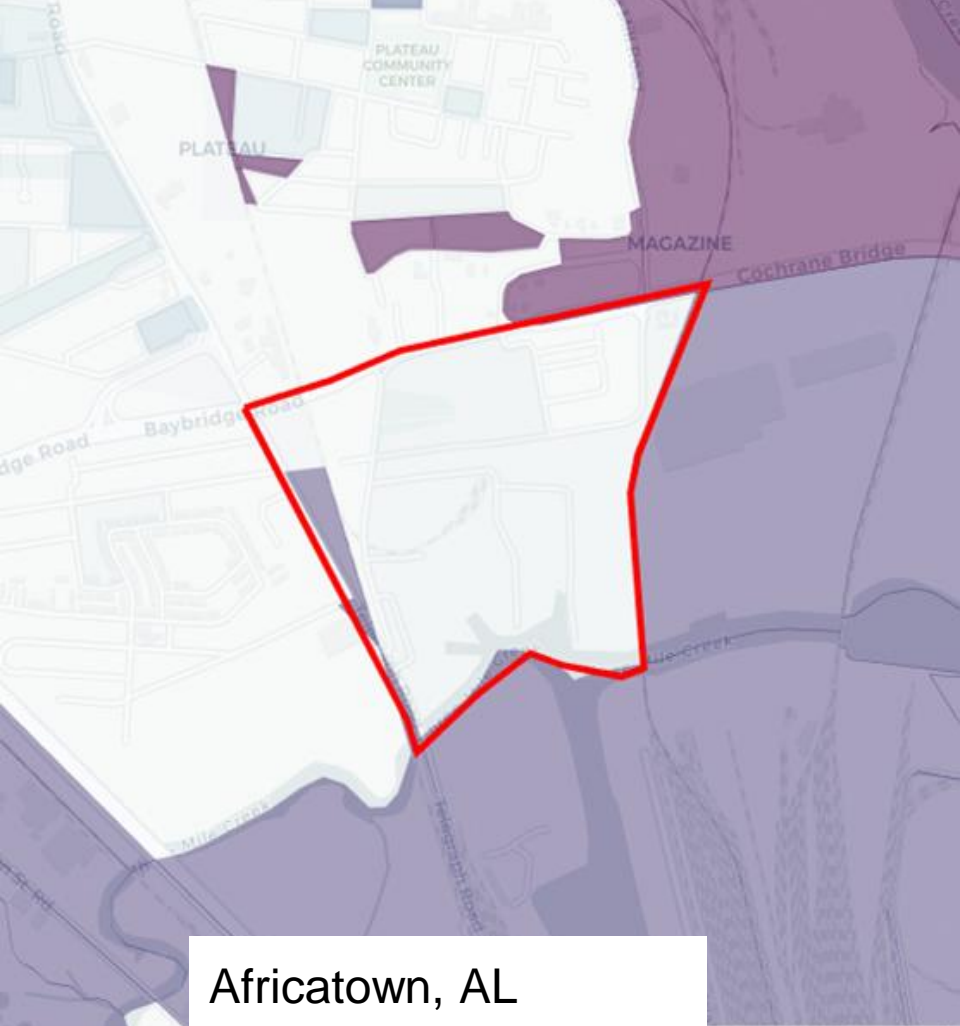
Background - The Lower 9th Ward

- Located in New Orleans, LA
- Hurricane Katrina in 2006
- Worst place hit
- Rebuilding



Background - Africatown

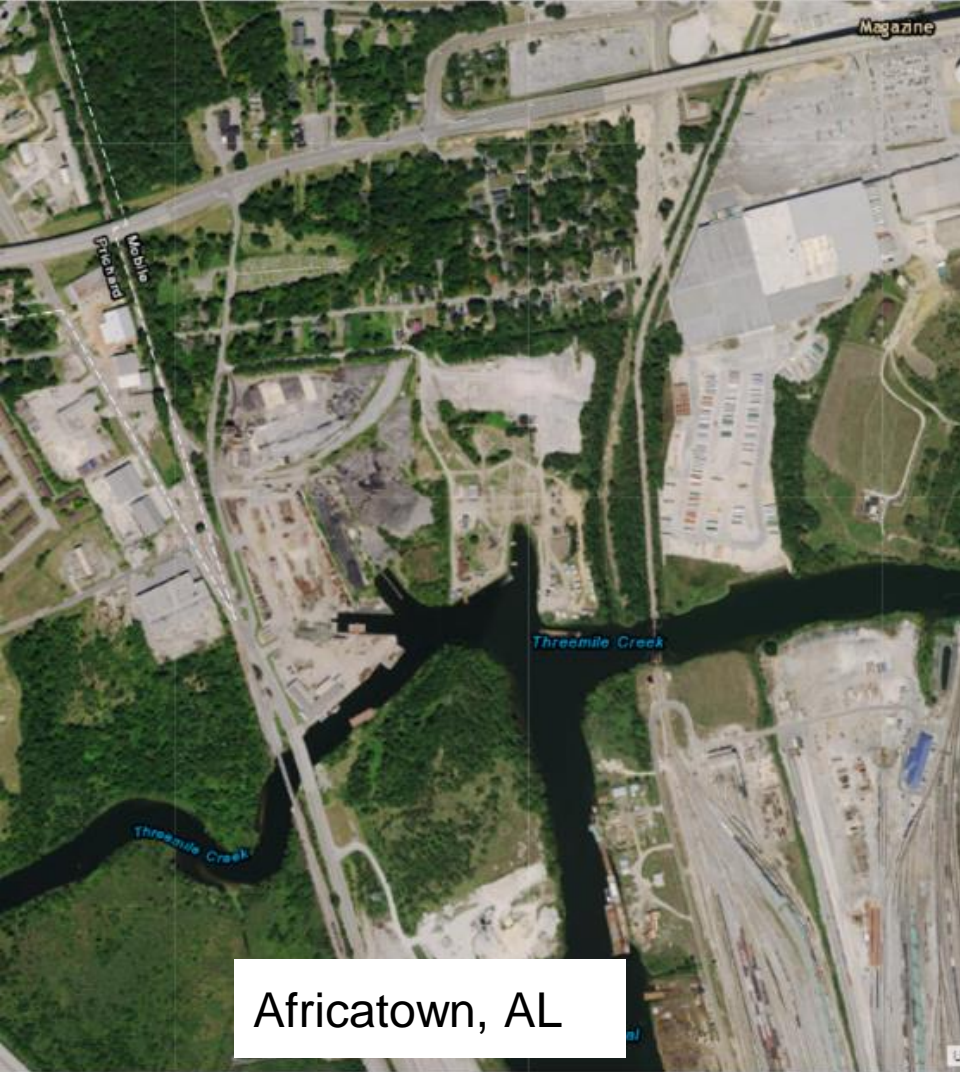
- Located in Mobile, AL
- Founded by shipment of slaves
- Brought by Timothy Meaher
- Industrialization



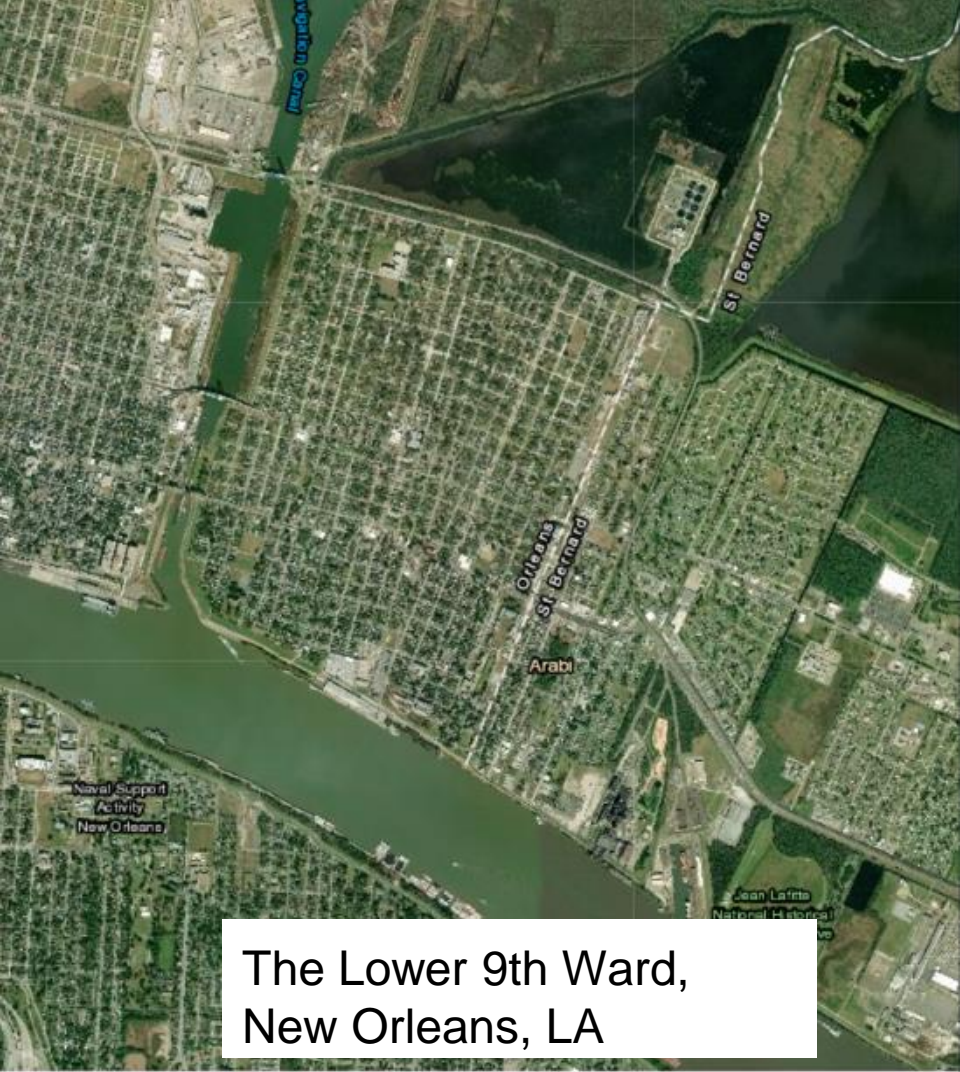
Africatown, AL



The Lower 9th Ward, New Orleans, LA



Africatown, AL



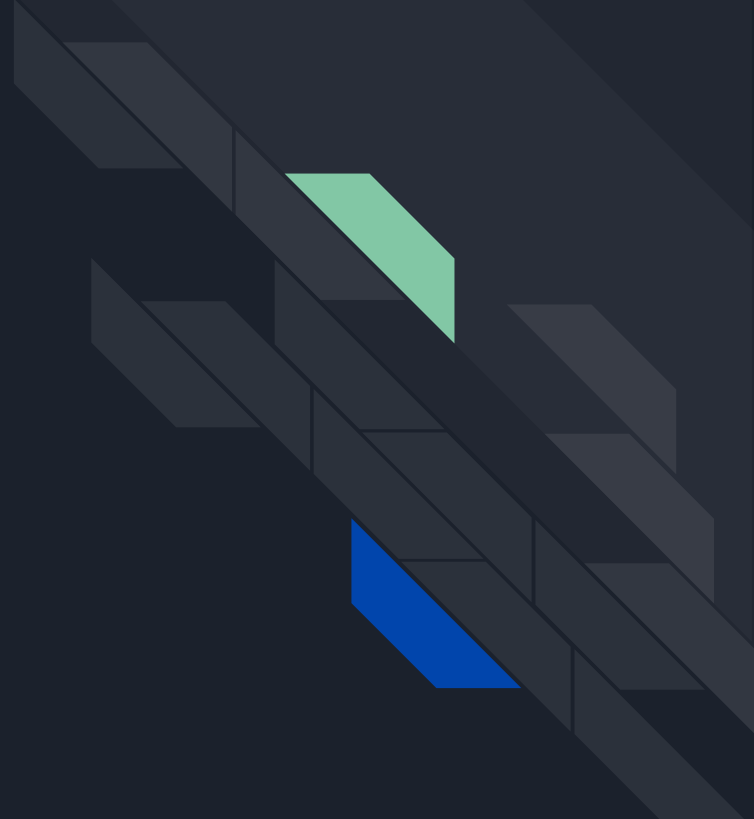
The Lower 9th Ward,
New Orleans, LA



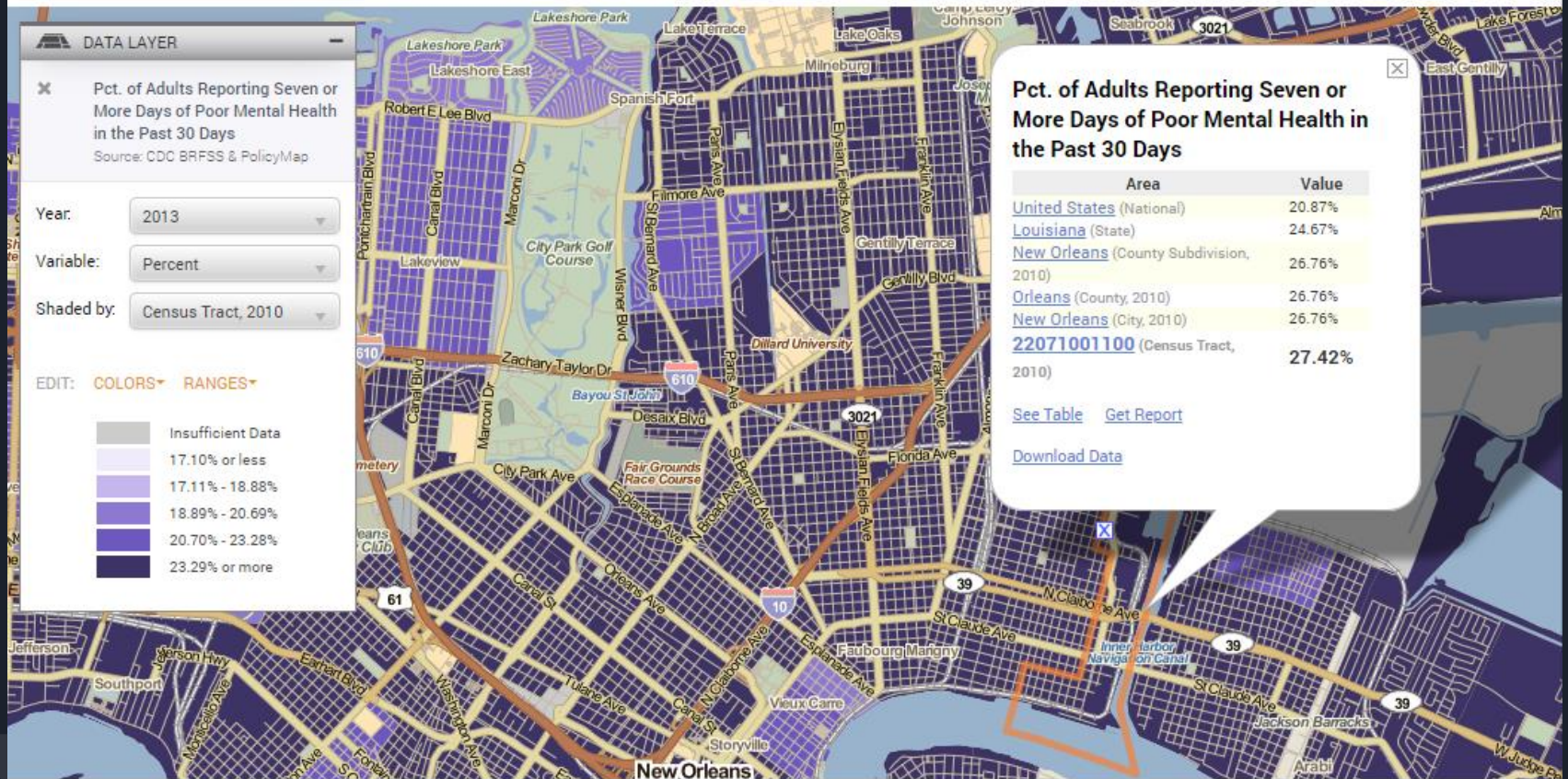
What is a Health Impact Assessment?

- A compilation of procedures that determines the possible effects on the health of a population, if any
- “A tool that can help communities, decision makers, and practitioners make choices that improve public health through community design”

The Lower 9th Ward, New Orleans, LA



Estimated percent of adults reporting seven or more days of poor mental health in the past 30 days in 2013. ▾

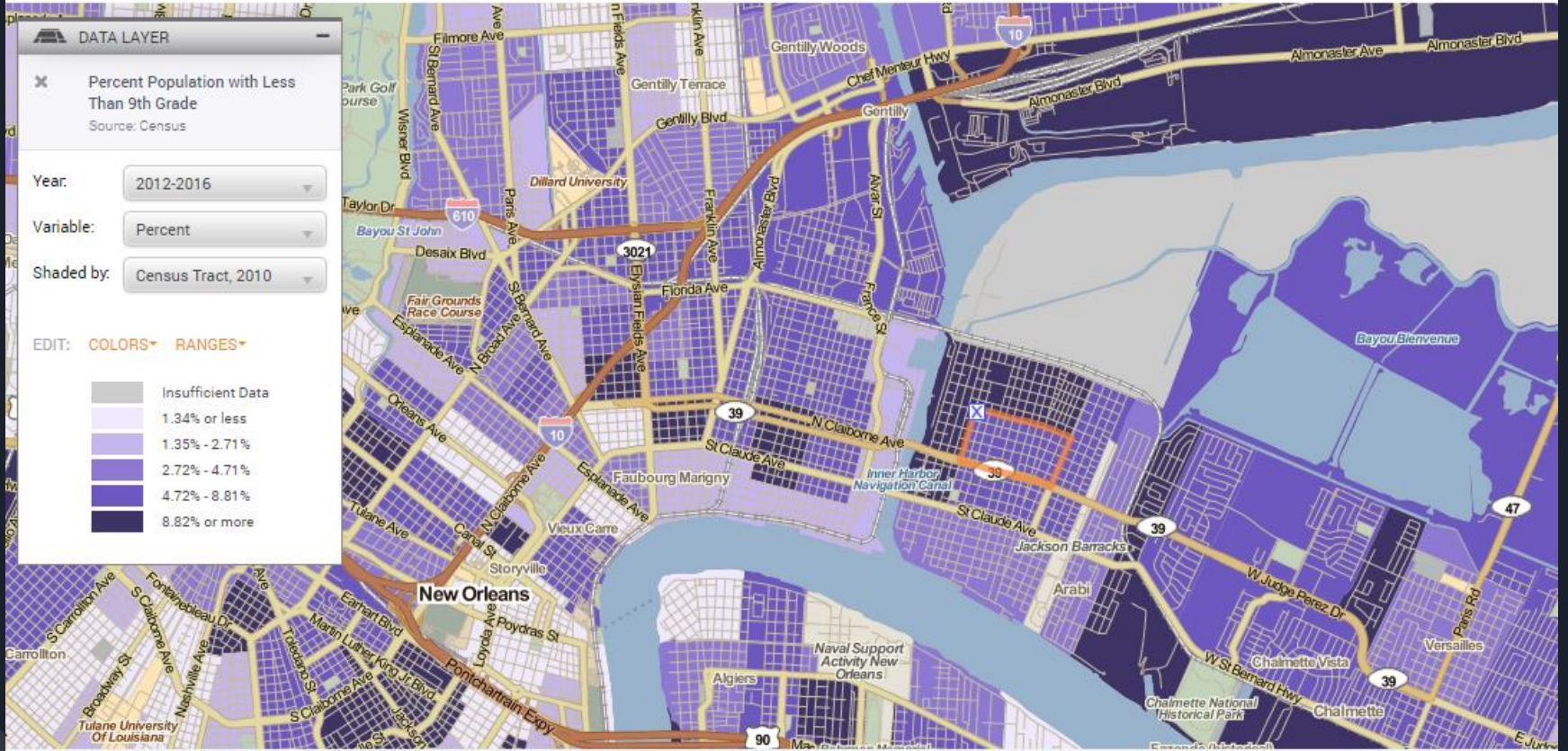


Mental Health in the Lower 9th Ward-New Orleans



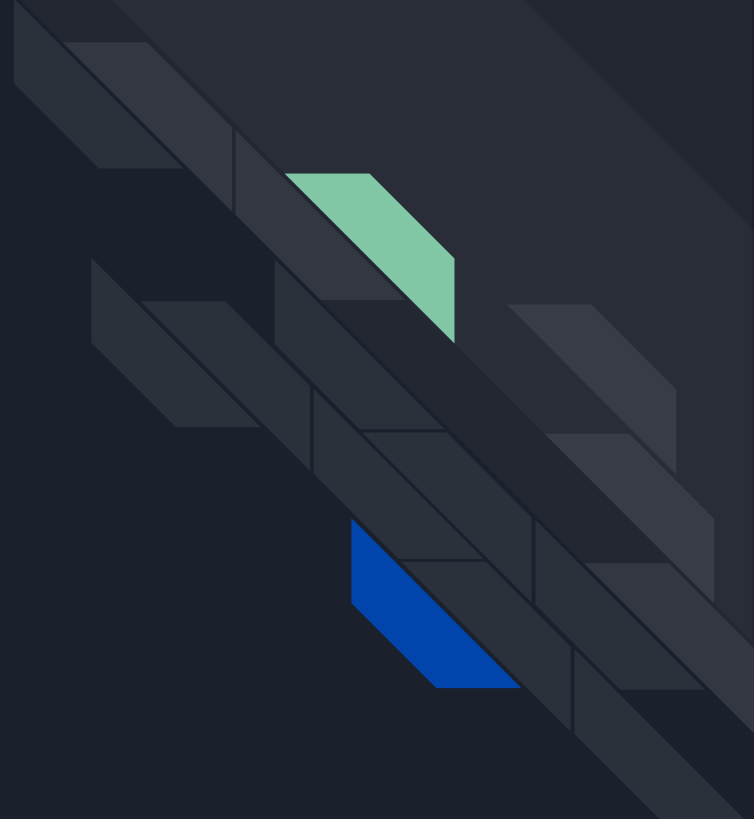
Low Income Population in the Lower 9th Ward- New Orleans

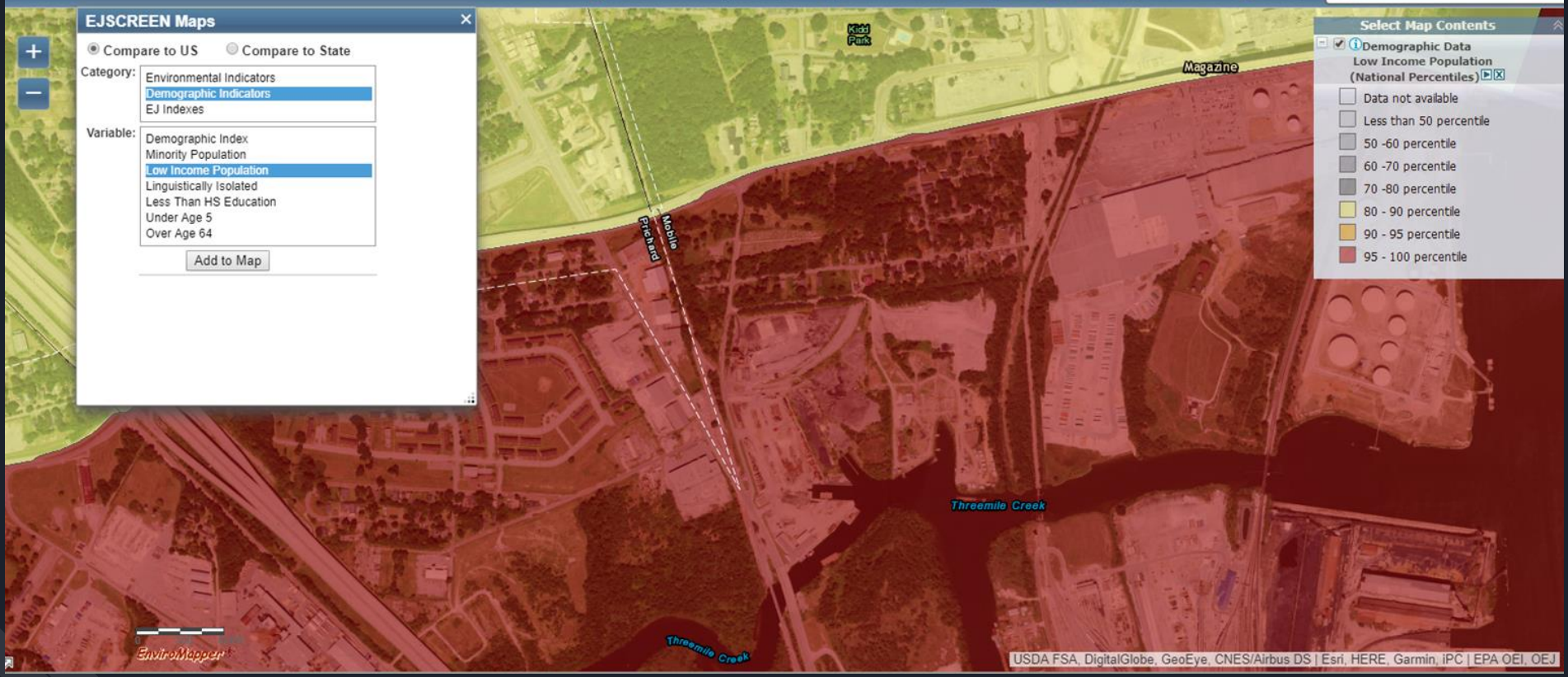
Estimated percent of population with less than a 9th grade education between 2012-2016. ▾



Education in the Lower 9th Ward-New Orleans

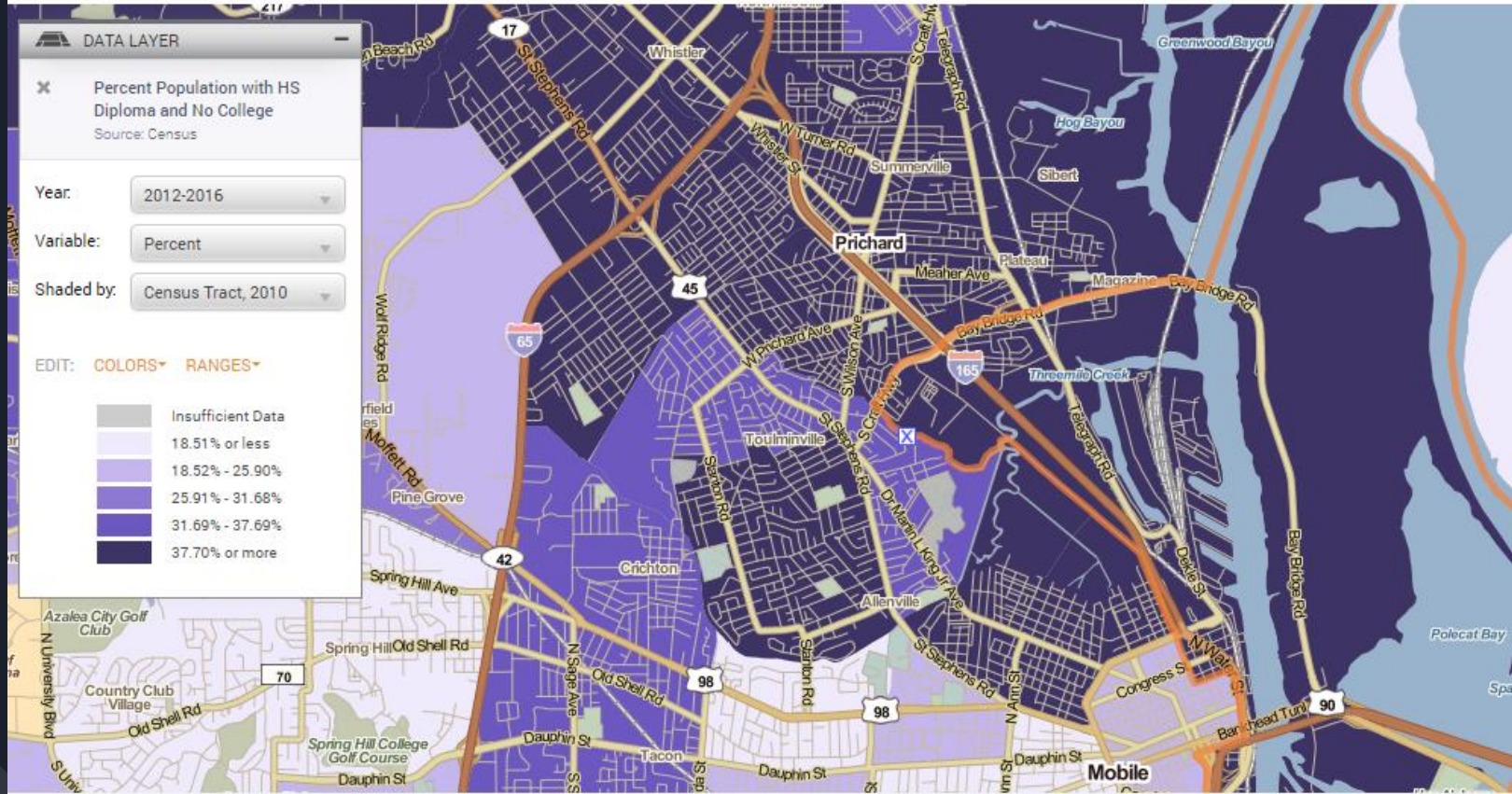
Africatown, Mobile, AL



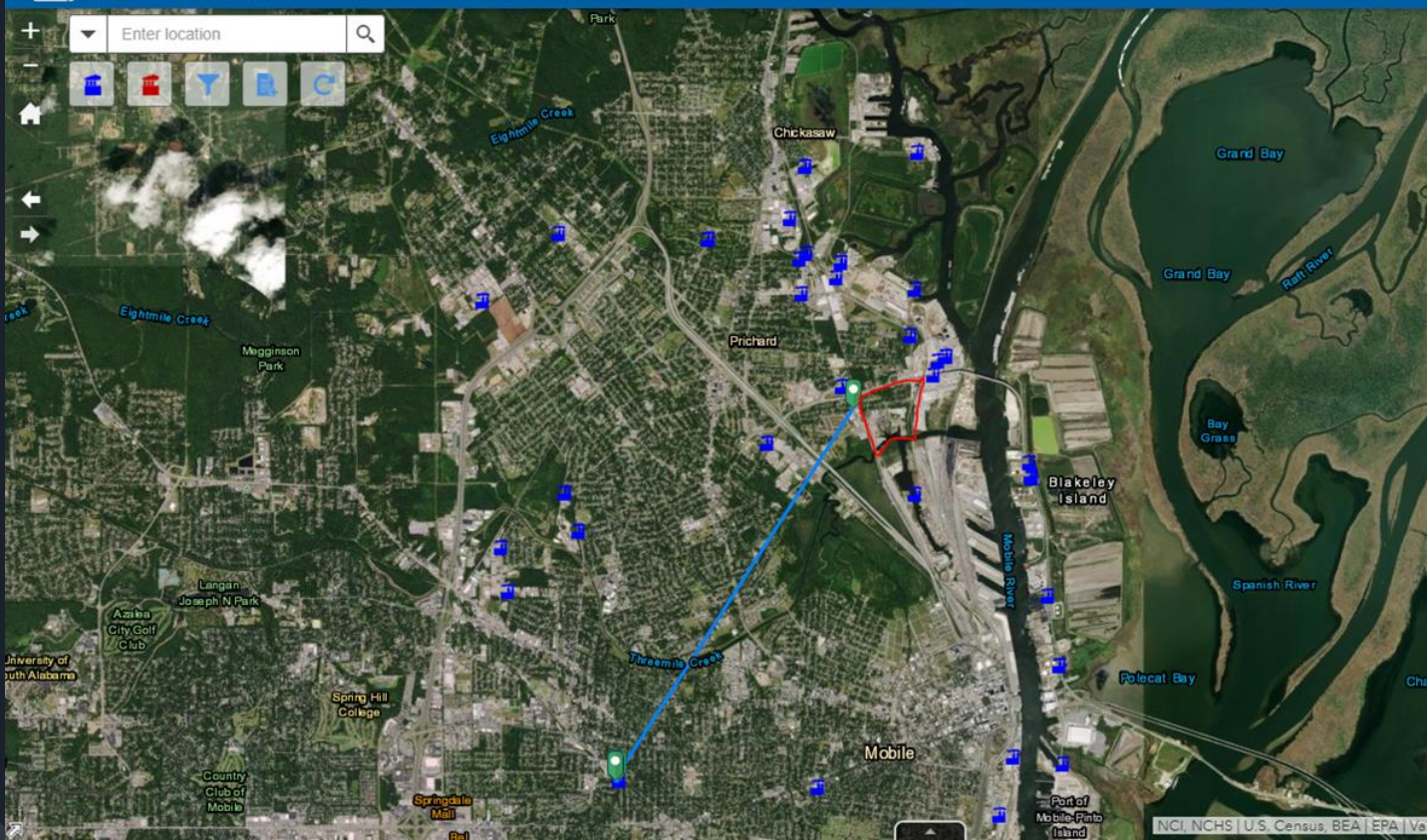


Low Income Population in Africatown- Mobile

Estimated percent of people with a high school diploma and no college between 2012-2016. ▾



Education in Africatown-Mobile



Measurement

Measurement Result

3.96 Miles

Scale: Miles

Source: NCI, NCHS | U.S. Census, BEA | EPA | Var

TOXMAP of Africatown- Mobile



References

- “Preventing Chronic Disease.” Centers for Disease Control and Prevention, Centers for Disease Control and Prevention, 13 Feb. 2015, www.cdc.gov/pcd/issues/2015/14_0376a.htm.**
- EPA, Environmental Protection Agency, myrtk.epa.gov/.**
- EPA, Environmental Protection Agency, enviroatlas.epa.gov/enviroatlas/interactivemap.**
- “City-Data.com - Stats about All US Cities - Real Estate, Relocation Info, Crime, House Prices, Cost of Living, Races, Home Value Estimator, Recent Sales, Income, Photos, Schools, Maps, Weather, Neighborhoods, and More.” City-Data, www.city-data.com/.**
- “EJSCREEN: Environmental Justice Screening and Mapping Tool.” EPA, Environmental Protection Agency, 2 Aug. 2018, www.epa.gov/ejscreen.**
- “TOXMAP.” U.S. National Library of Medicine, National Institutes of Health, toxmap.nlm.nih.gov/toxmap/app/.**



Acknowledgements

A special thank you to:

Dr. David Padgett
Tennessee State University

Dr. Lonnie Sharpe

Mr. Joe Womack

Mr. Arthur Johnson

Mr. Happy Johnson

U.S Department of Energy