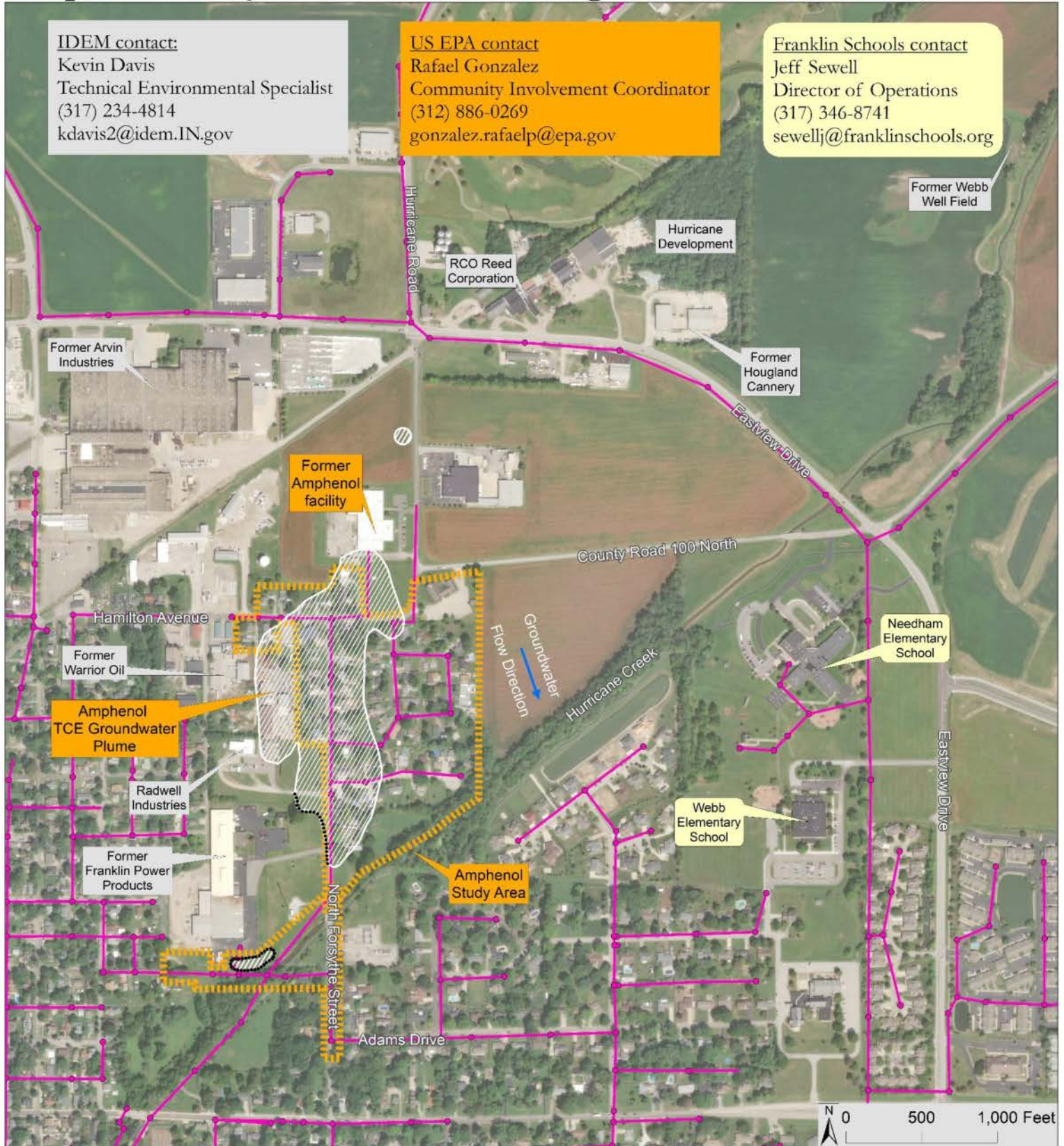


Amphenol Study Area and Surrounding Locations Franklin, Indiana


IDEM contact:
 Kevin Davis
 Technical Environmental Specialist
 (317) 234-4814
 kdavis2@idem.IN.gov

US EPA contact
 Rafael Gonzalez
 Community Involvement Coordinator
 (312) 886-0269
 gonzalez.rafaelp@epa.gov

Franklin Schools contact
 Jeff Sewell
 Director of Operations
 (317) 346-8741
 sewellj@franklinschools.org



 Study Area

 Sanitary Sewer Lines

 Amphenol TCE Groundwater Plume (TCE concentrations > 1.2 ug/L)

 Tentative Plume Boundary

Sources:
 Johnson Co, IN Sewer data 5/19
 TCE concentrations - IWM Consulting 4/3/19
 ESRI Imagery layer 2019
 US EPA R5 LCD: LS 6/3/19