

*Presented below are water quality standards that are in effect for Clean Water Act purposes.*

*EPA is posting these standards as a convenience to users and has made a reasonable effort to assure their accuracy. Additionally, EPA has made a reasonable effort to identify parts of the standards that are not approved, disapproved, or are otherwise not in effect for Clean Water Act purposes.*



# FLORIDA DEPARTMENT OF ENVIRONMENTAL PROTECTION

## Waters with Site Specific Alternative Criteria

[Home](#) » [Divisions](#) » [Division of Environmental Assessment and Restoration](#) » [Water Quality Standards](#) » Waters with Site Specific Alternative Criteria

### Waters with Site Specific Alternative Criteria

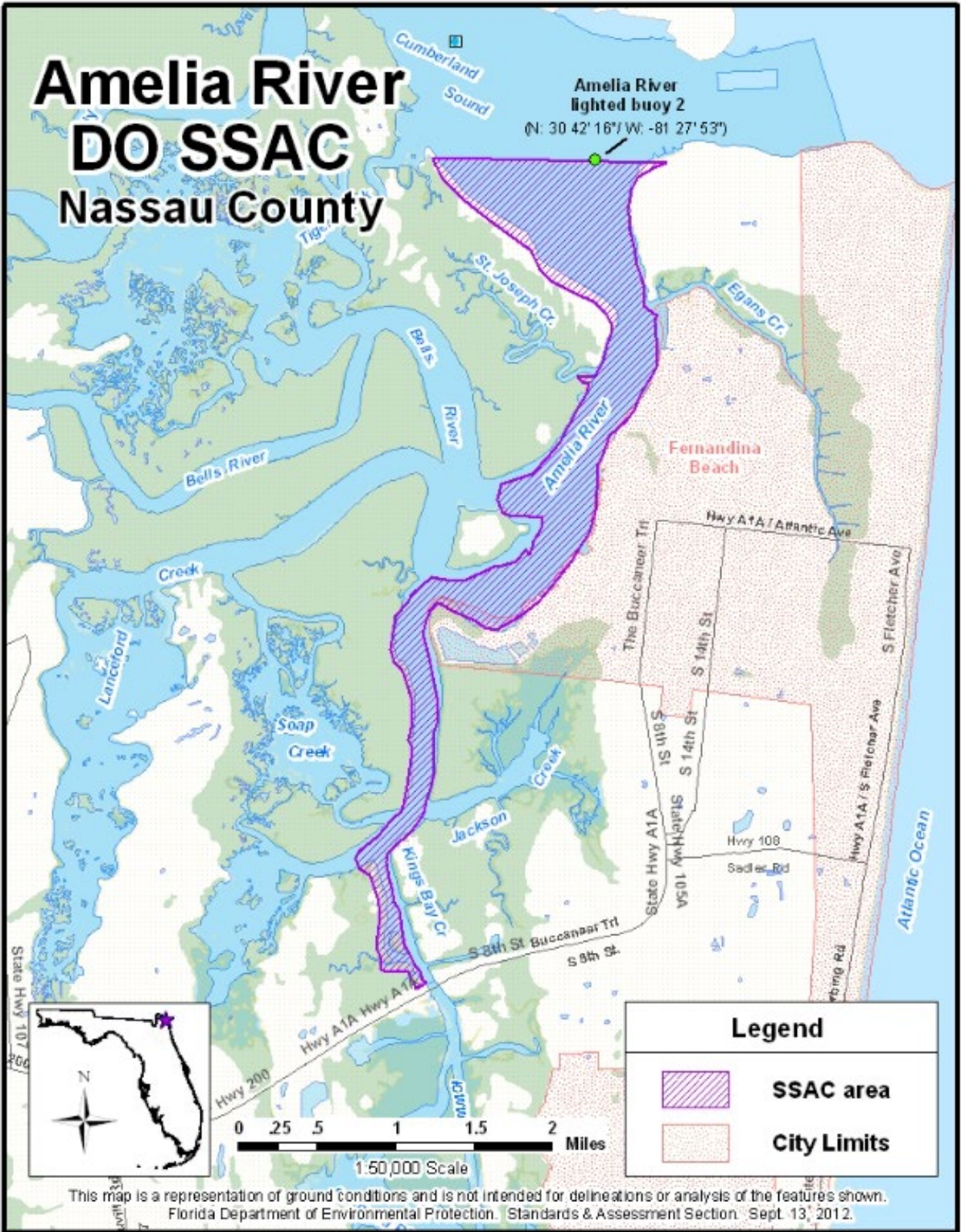
Water Body and Classification	Type I Site Specific Alternative Criteria For SSACs with seasonal limits, the default criteria in Rule 62-302.530, F.A.C., apply at other times of the year.	County(ies)
<b>Amelia River</b> Segment between the northern mouth of the river and the A1A crossing. Class III(m).	Dissolved Oxygen of 3.2 mg/L as a minimum during low tide from July 1 through September 30, and not below 4.0 mg/L during all other conditions. The 24-hr. average shall be greater than or equal to 5.0 mg/L. Applies July 1 through Sept. 30th.	Nassau
<b>Crystal River Canal System</b> Portions of the Main Channel, East and West Canals. Class III(f).	Dissolved Oxygen of 0.1 mg/L as a minimum. Applies year round.	Citrus
<b>Everglades Protection Area</b> As defined in Section 373.4592(2)(i), F.S., and includes Water Conservation Areas 1, 2A, 2B, 3A, 3B, the Arthur R. Marshall National Wildlife Refuge, and Everglades National Park. Class III(f). <b>Note:</b> this SSAC applies to fresh waters within the described area.	Dissolved Oxygen shall be evaluated based on an algorithm that uses sample collection time and water temperature to model the observed natural sinusoidal diel cycle and seasonal variability. This model provides a lower DO limit (DOL) for an individual monitoring station and is described by the equation: $DOL_i = [-3.70 - \{1.50 \cdot \sin(2\pi/1440 \cdot t_i) - (0.30 \cdot \sin[4\pi/1440 \cdot t_i])\}] + 1/(0.0683 + 0.00198 \cdot C_i + 5.24 \cdot 10^{-6} \cdot C_i^2) - 1.1$ Where: <b>DOL<sub>i</sub></b> = lower limit for the i <sup>th</sup> annual DO measurement in milligrams per liter (mg/L) <b>t<sub>i</sub></b> = sample collection time in minutes (Eastern Standard Time) since midnight of the i <sup>th</sup> annual DO measurement <b>C<sub>i</sub></b> = water temperature associated with the i <sup>th</sup> annual DO measurement in °C Compliance with the SSAC is assessed based on a comparison between the annual average measured DO concentration and the average of the corresponding DO limits specified by the above equation. Applies year round.	Palm Beach Broward Dade Monroe
<b>Fenholloway River</b> From river mile -0.1 to river mile 3.5. Class III(m).	Iron - No more than 10% of the iron measurements in this reach of the river shall be above 1.06 mg/L. Applies year round.	Taylor
<b>Hillsboro Canal Tributary</b> Belle Glade - canal receiving wastewater discharge from Sugar Cane Growers Cooperative Labor Camp #3 (NW corner Section 11, Range 37 East, Township 44 South, on NE side of Hillsboro Canal). Class IV.	Dissolved Oxygen of 2.6 mg/L annual average with 0.3 mg/L as a minimum. Applies year round.	Palm Beach
<b>Holmes Creek</b> From the confluence with Little Creek to the SR 277 Creek crossing. Class III(f).	Dissolved Oxygen of 4.0 mg/L as a minimum from June 1 through September 30.	Jackson Holmes
<b>Myrtle Slough</b> SSAC 1 - In sections 19, 29, 30, 31, and 32, Township 40 south, Range 24 east. Class III(f). SSAC 2 - Between stations 1 and 3 as identified on the image. Class III(f).	SSAC 1 - Dissolved Oxygen of 2.5 mg/L, applicable June through September. SSAC 2 - Dissolved Oxygen level of 1.5 mg/L annual average with normal daily, seasonal and climatic fluctuations including natural excursions to a minimum of 0.1 mg/L. Applies year round.	Charlotte
<b>Peace Creek Canal</b> Lake Wales SSAC - South from SR 60 to the western section line of Section 15, Township 30 South, Range 27 East. Class III(f). Winter Haven SSAC - Downstream from SR 60. Class III(f).	Lake Wales SSAC - Dissolved Oxygen of 3.0 mg/L as a minimum. Applies year round. Winter Haven SSAC - Dissolved Oxygen of 3.0 mg/L, maintaining normal daily and seasonal fluctuations. Applies 3 miles downstream from SR 60 for June, July and September, and 5 miles downstream during August.	Polk
<b>Spring Creek</b> Headwater to River Mile 2.5. Class III(f).	Dissolved Oxygen of 2.5 mg/L as a minimum. Applies year round.	Taylor
<b>Thomas Creek</b> Including tributaries, from its headwaters to the downstream location where Thomas Creek becomes predominantly marine (1500 mg/L chloride concentration), at N 30.56603 latitude, W -81.72888 longitude. Class III (f).	Annual average Dissolved Oxygen of 2.6 mg/L, with no more than 10 percent of the individual Dissolved Oxygen measurements below 1.6 mg/L on an annual basis.	Duval Nassau
<b>Turkey Creek</b> Including tributaries to the confluence with the South Prong of the St. Marys River, and the South Prong of the St. Marys River (including tributaries) from its headwaters to U.S. Route 90. Class III(f).	Annual average Dissolved Oxygen of 3.0 mg/L, with no more than 10% of the individual Dissolved Oxygen measurements below 1.35 mg/L on an annual basis. Applies year round.	Baker

<b>Water Body and Classification</b>	<b>Type I Site Specific Alternative Criteria</b> For SSACs with seasonal limits, the default criteria in Rule 62-302.530, F.A.C., apply at other times of the year.	<b>County(ies)</b>
<b>Withlacoochee River</b> (Northern) (River Miles 19-25). Class III(f).	Dissolved Oxygen of 4.0 mg/L as a minimum from June 1 through October 30.	Hamilton

<b>Water Body and Classification</b>	<b>Type II Site Specific Alternative Criteria</b> For SSACs with seasonal limits, the default criteria in Rule 62-302.530, F.A.C., apply at other times of the year.	<b>County(s)</b>
<b>Fenholloway River</b> (Transparency-Phytoplankton) From river mile -0.1 to river mile 3.5. Class III(f & m).	The annual average compensation depth for photosynthetic activity for phytoplankton shall not be decreased greater than 44.3 percent from background conditions as determined by an annual average compensation depth of at least 0.66 meters at river mile 0.53 (station F06). This value must be based on a minimum of 12 measurements during times when the average flow at Coeey Island Bridge at river mile 7.15 (USGS gage 02325532) measures less than 200 cubic feet per second. Applies year round.	Taylor
<b>Fenholloway River (Nearshore)</b> Coastal waters (Apalachee Bay) as spatially defined by the coordinates (83° 49' 29.95" W, 29° 59' 38.70" N), (83° 45' 3.61" W, 29° 57' 22.10" N), (83° 47' 23.50" W, 29° 54' 5.01" N), and (83° 51' 45.47" W, 29° 56' 25.71" N). Class III(m).	The average of the growing season (May 1 – October 31) average light (as photosynthetically active radiation between 400 and 700 nm) at 1 m depth at stations F10 (83° 47' 6.60" W, 29° 57' 4.20" N) and F11 (83° 48' 27.00" W, 29° 57' 38.40" N) shall be 36 percent or more of surface values based on a minimum of 12 measurements and will only apply during years in which the growing season average flow at Hampton Springs Bridge (USGS gage 02325000 near Perry) is less than or equal to 60 cubic feet per second (after subtracting flows from permitted point sources).	Taylor
<b>Orange County</b> Eastern Water Reclamation Facility discharge wetlands. Class III(f).	PH of not greater than 8.5 standard units. Applies year round.	Orange
<b>Pace Swamp</b> The freshwater forested wetlands located primarily in Township 1 North, Range 29 West, Section 19, near the City of Pace	pH shall not exceed 7.0 standard units in more than 10 percent of the measurements collected in a calendar year, nor vary below natural background.	Santa Rosa
<b>St. Johns River</b> Marine portions of the Lower St. Johns River and its tributaries between Julington Creek and the mouth of the river. Class III(m).	Dissolved Oxygen not less than a minimum concentration of 4.0 mg/L, and a Total Fractional Exposure not greater than 1.0 over an annual evaluation period as defined by the following equation: Total Fractional Exposure = (Days between 4.0 and <4.2 mg/L ÷ 16 day Max) + (Days between 4.2 and <4.4 mg/L ÷ 21 day Max) + (Days between 4.4 and <4.6 mg/L ÷ 30 day Max) + (Days between 4.6 and <4.8 mg/L ÷ 47 day Max) + (Days between 4.8 and <5.0 mg/L ÷ 55 day Max) or alternate view	Duval Clay

Last Modified April 19, 2019 - 3:25pm

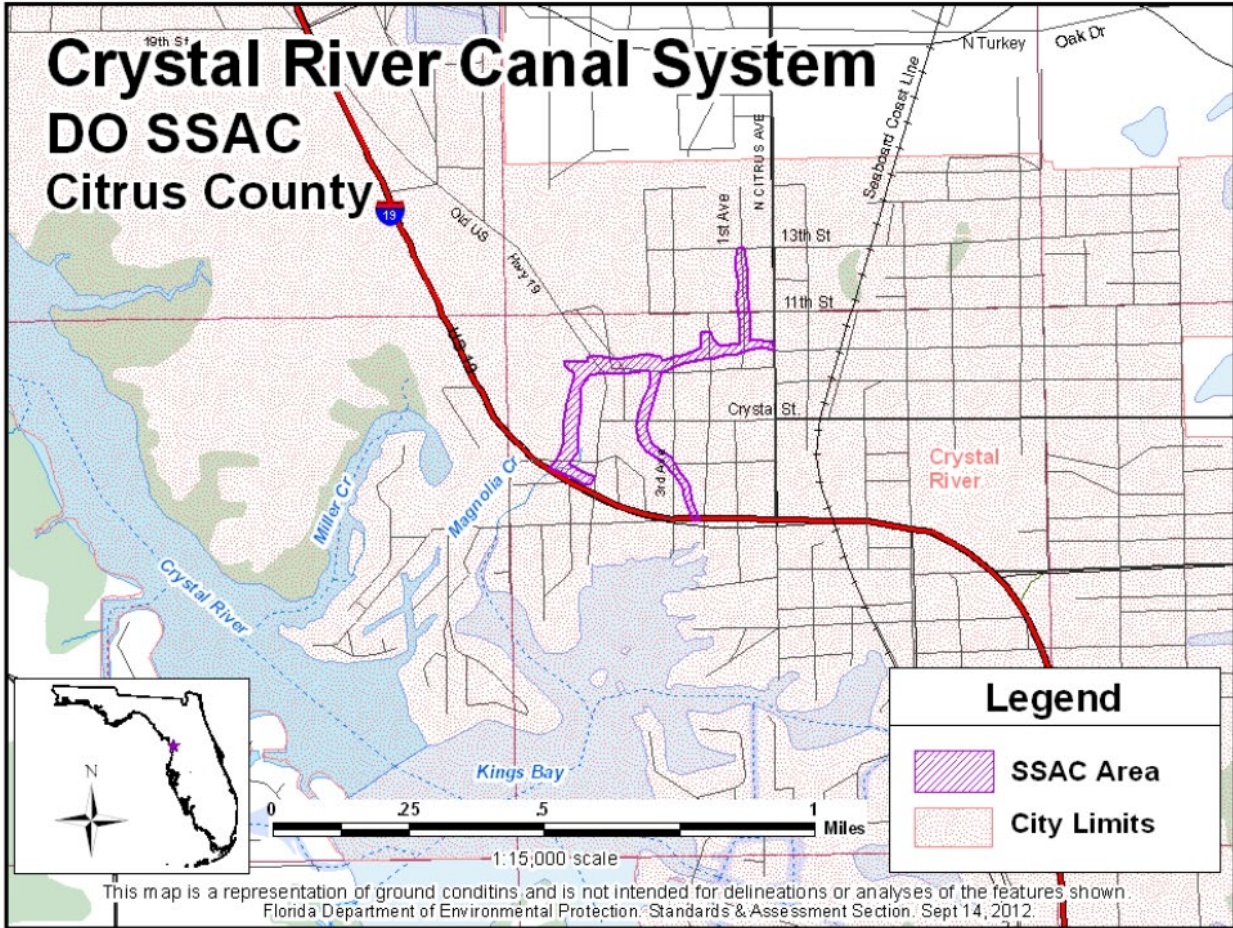
Maps of Waters with Site Specific Alternative Criteria



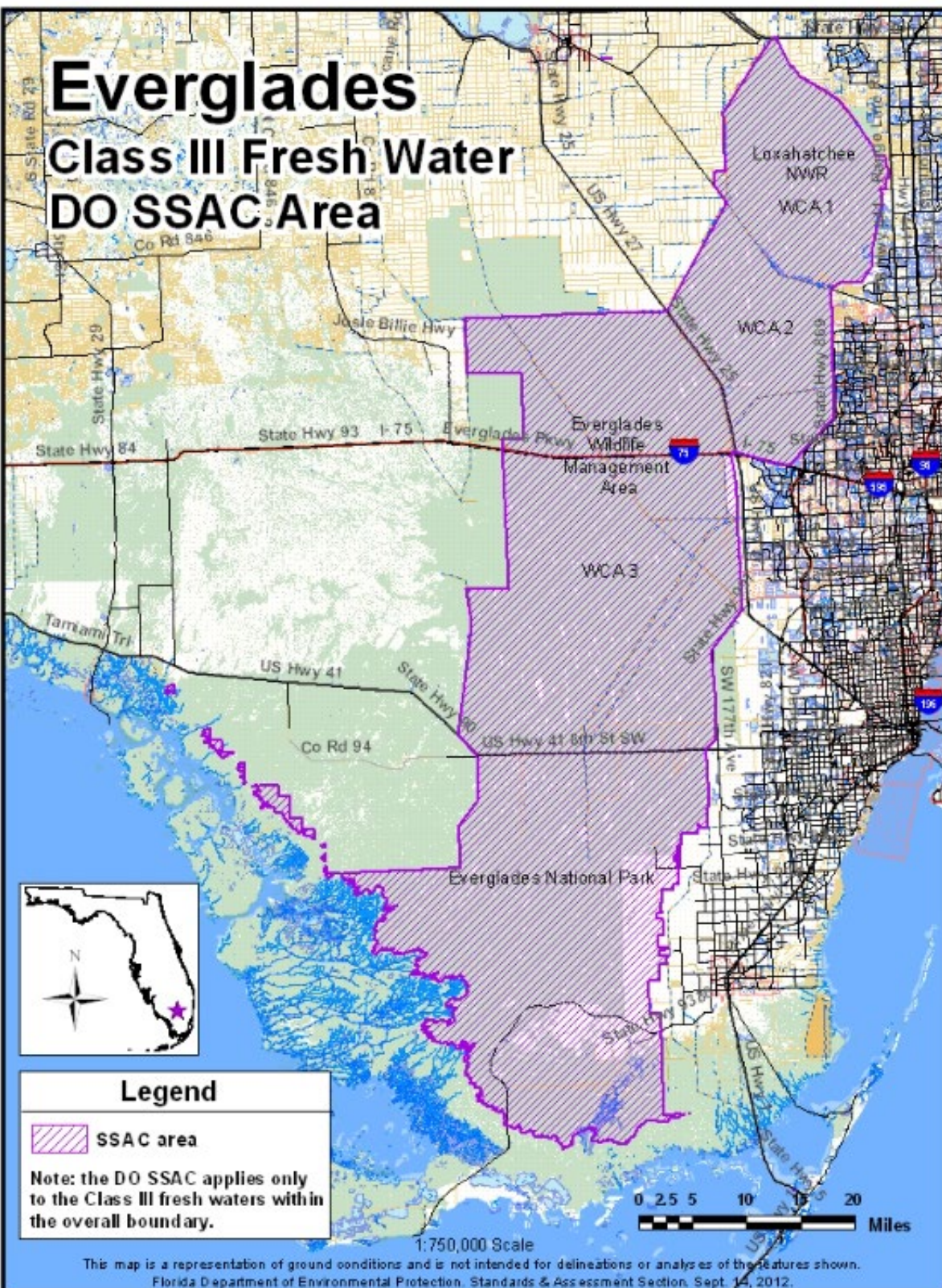
# Crystal River Canal System

## DO SSAC

### Citrus County



# Everglades Class III Fresh Water DO SSAC Area



## Legend

 SSAC area

Note: the DO SSAC applies only to the Class III fresh waters within the overall boundary.

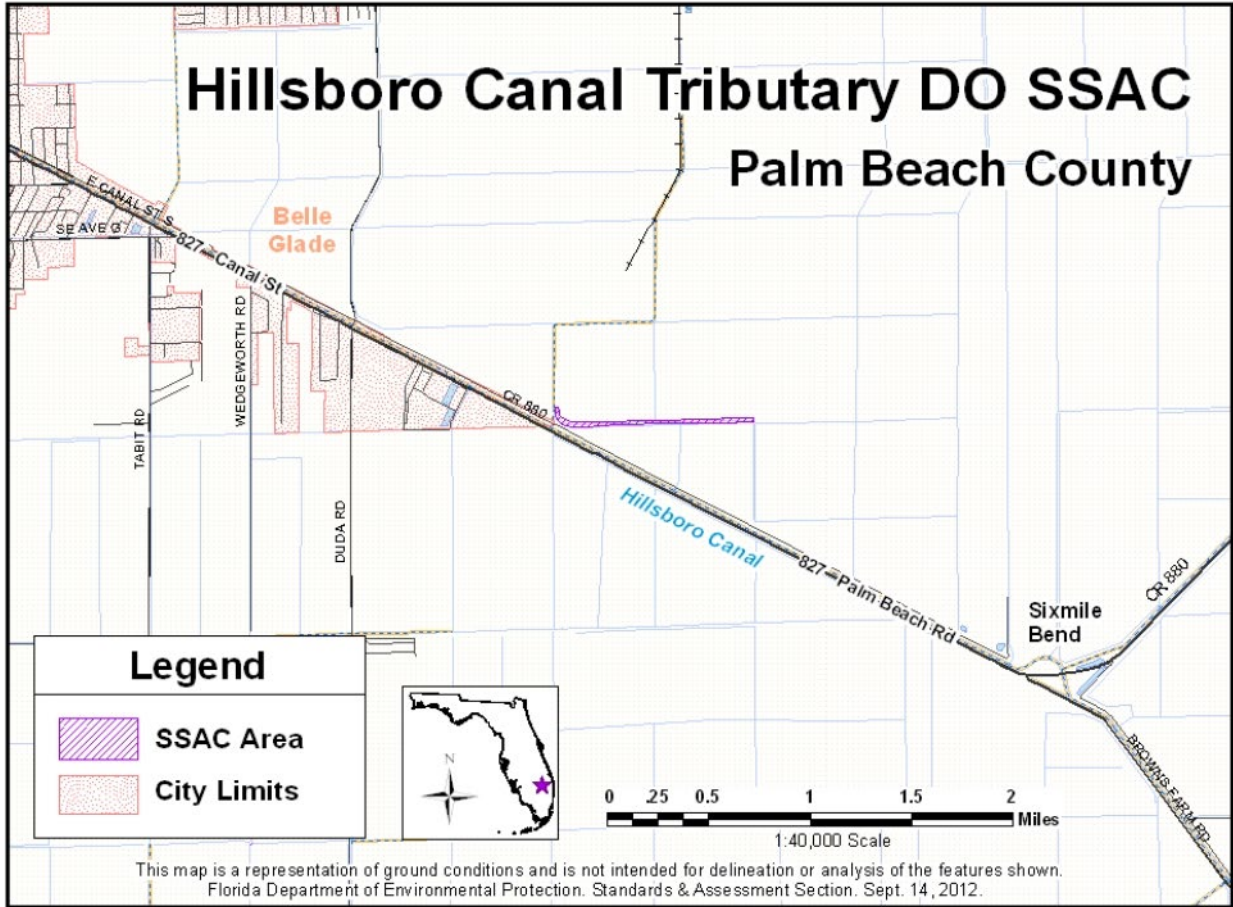
1:750,000 Scale

This map is a representation of ground conditions and is not intended for delineations or analyses of the features shown.  
Florida Department of Environmental Protection, Standards & Assessment Section, Sept. 14, 2012.

# Lower Fenholloway River Iron SSAC Area Taylor County



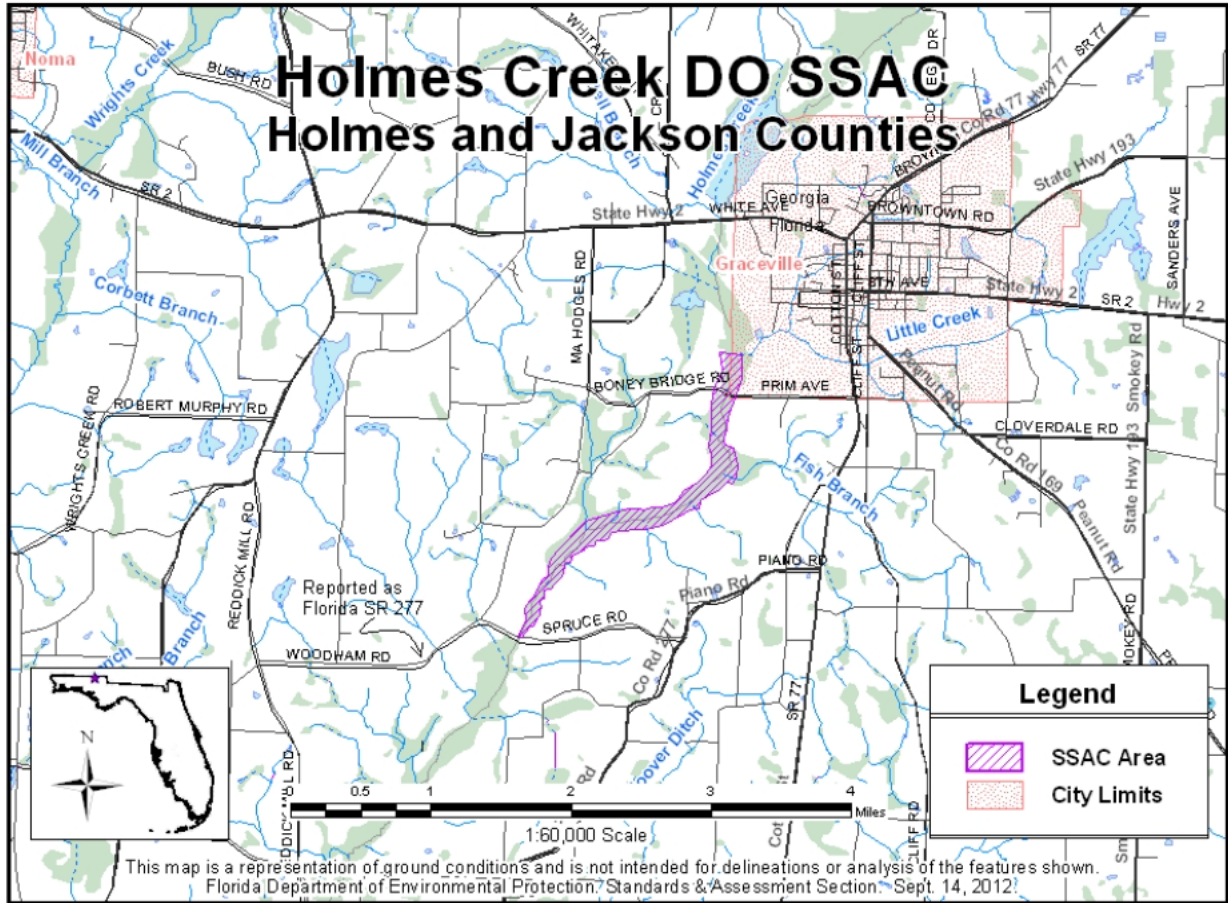
# Hillsboro Canal Tributary DO SSAC Palm Beach County



This map is a representation of ground conditions and is not intended for delineation or analysis of the features shown.  
Florida Department of Environmental Protection, Standards & Assessment Section, Sept. 14, 2012.

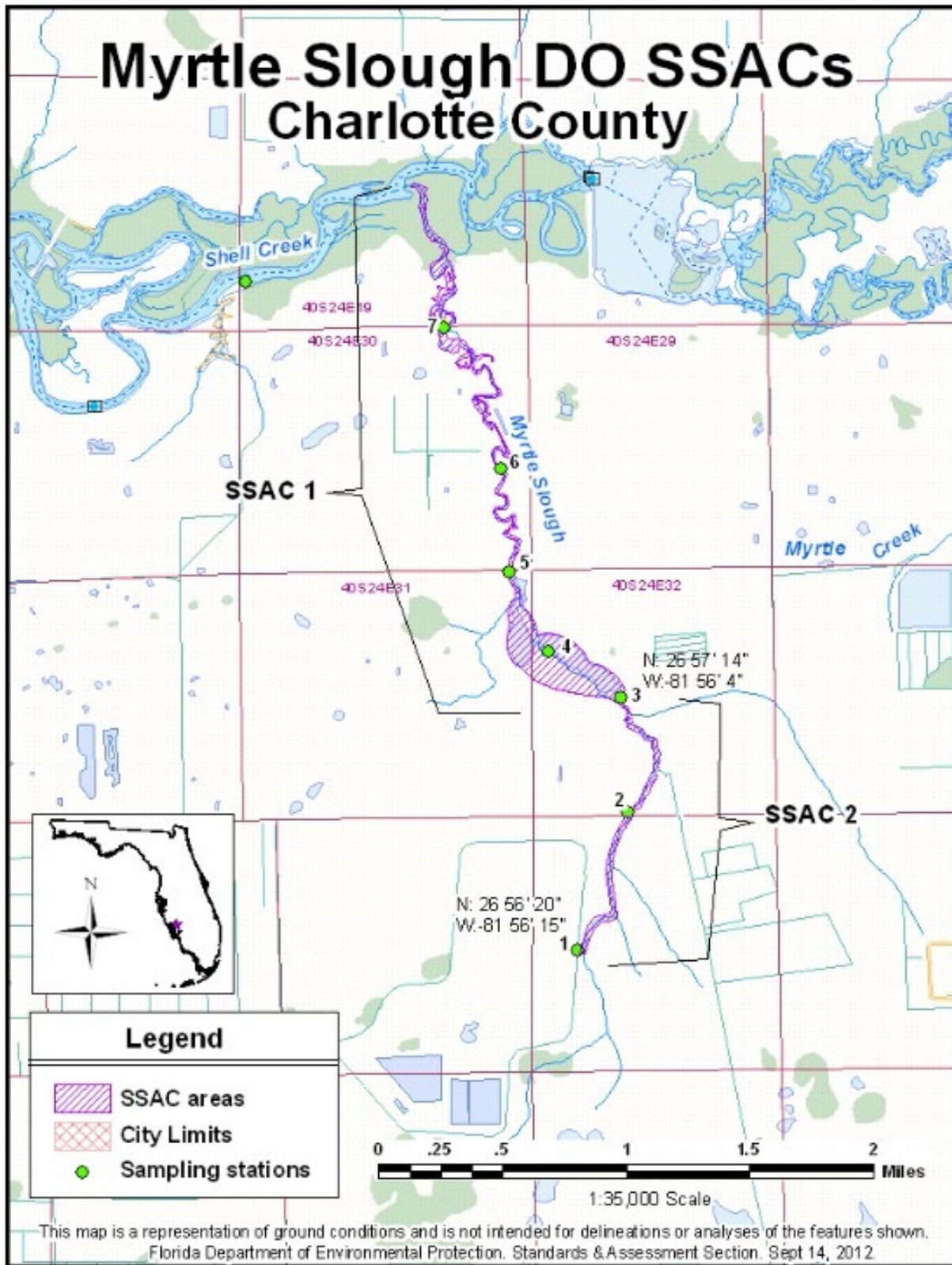


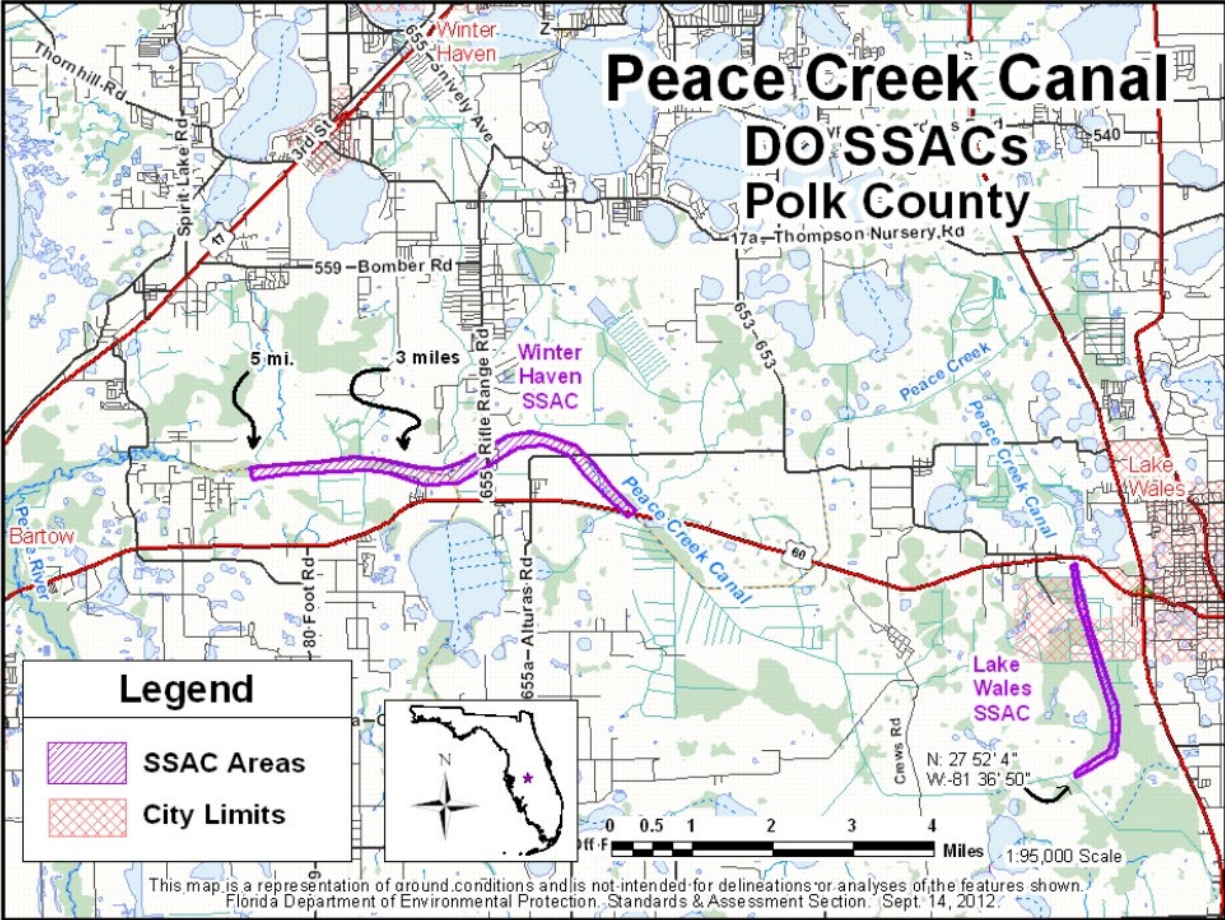
# Holmes Creek DO SSAC Holmes and Jackson Counties



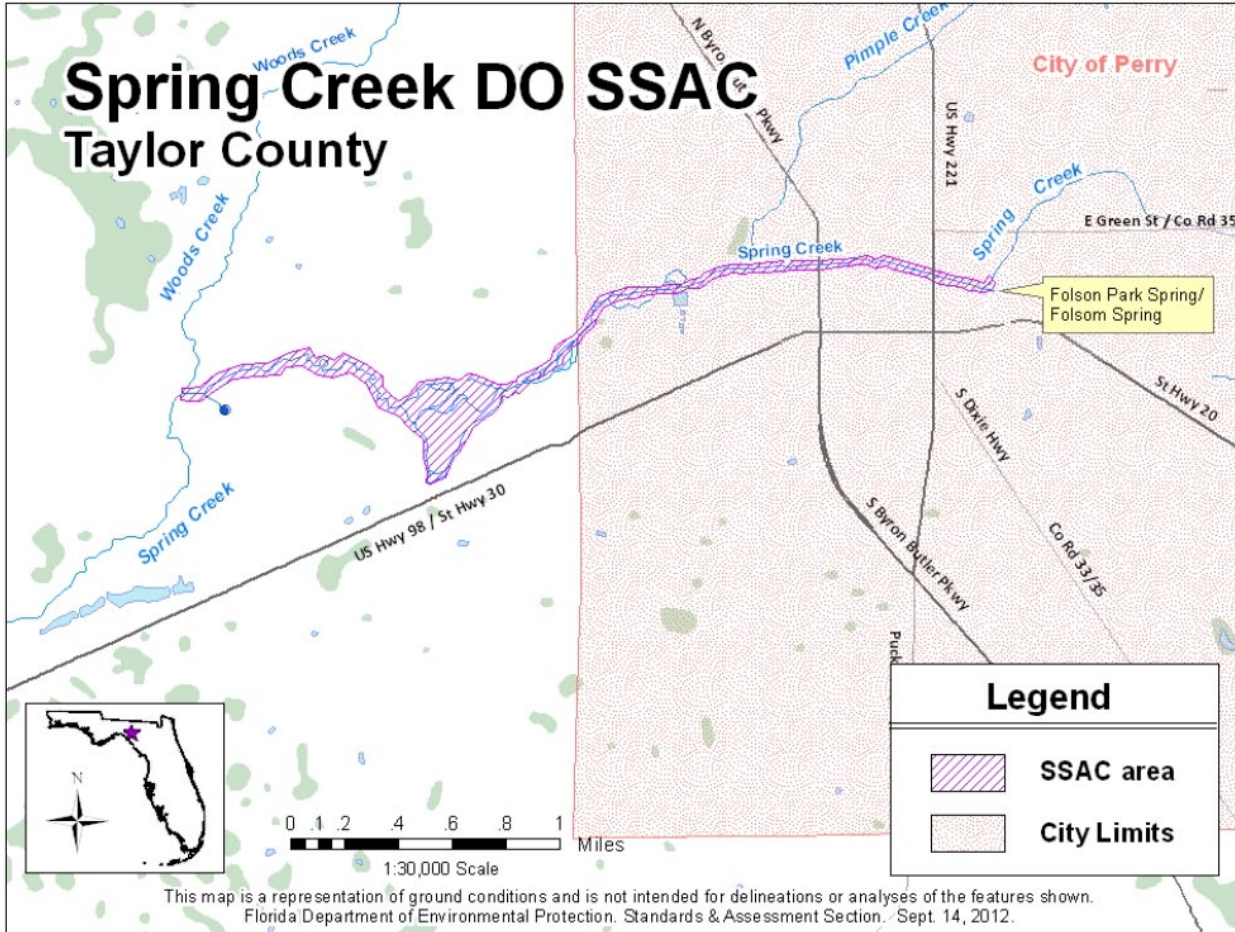
This map is a representation of ground conditions and is not intended for delineations or analysis of the features shown.  
 Florida Department of Environmental Protection, Standards & Assessment Section, Sept. 14, 2012

# Myrtle Slough DO SSACs Charlotte County

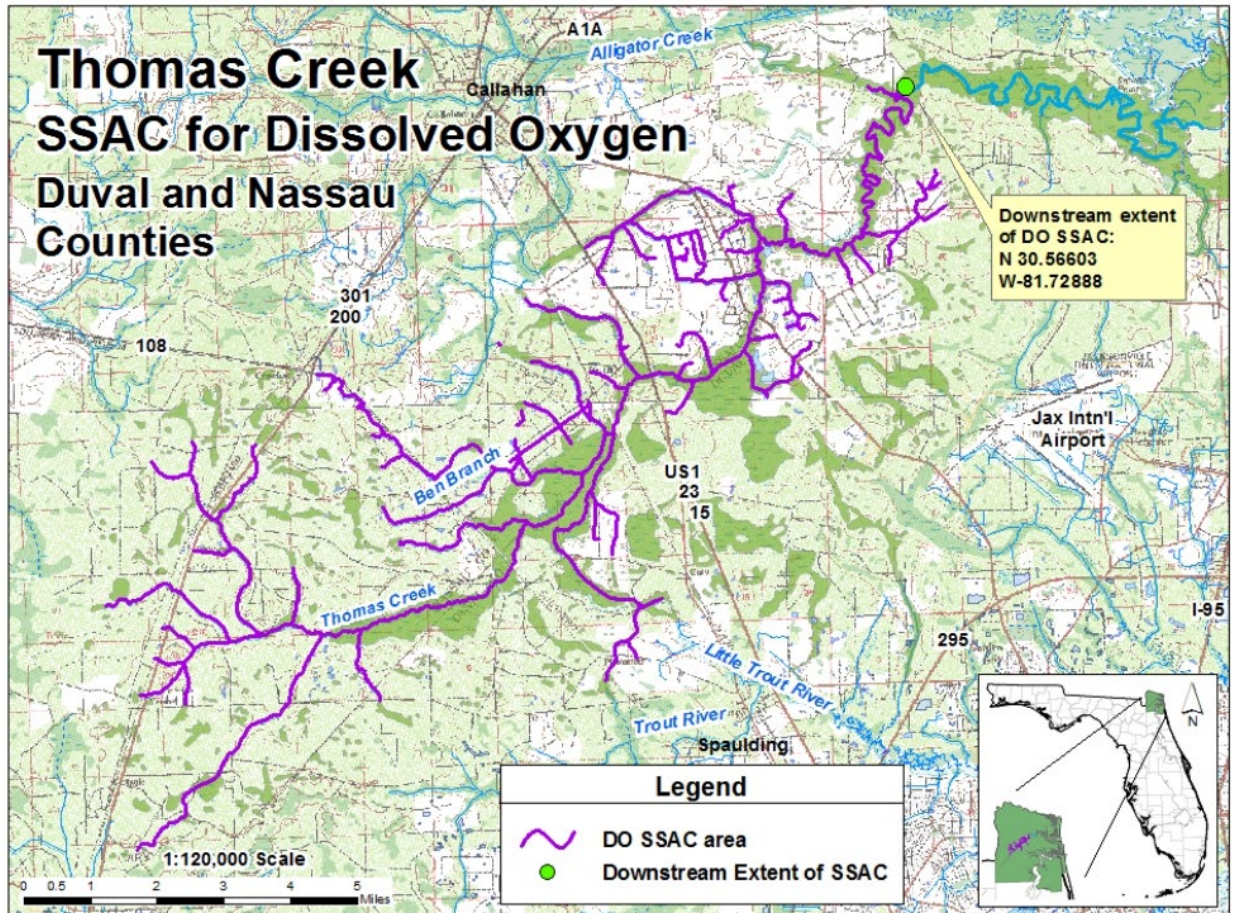




# Spring Creek DO SSAC Taylor County

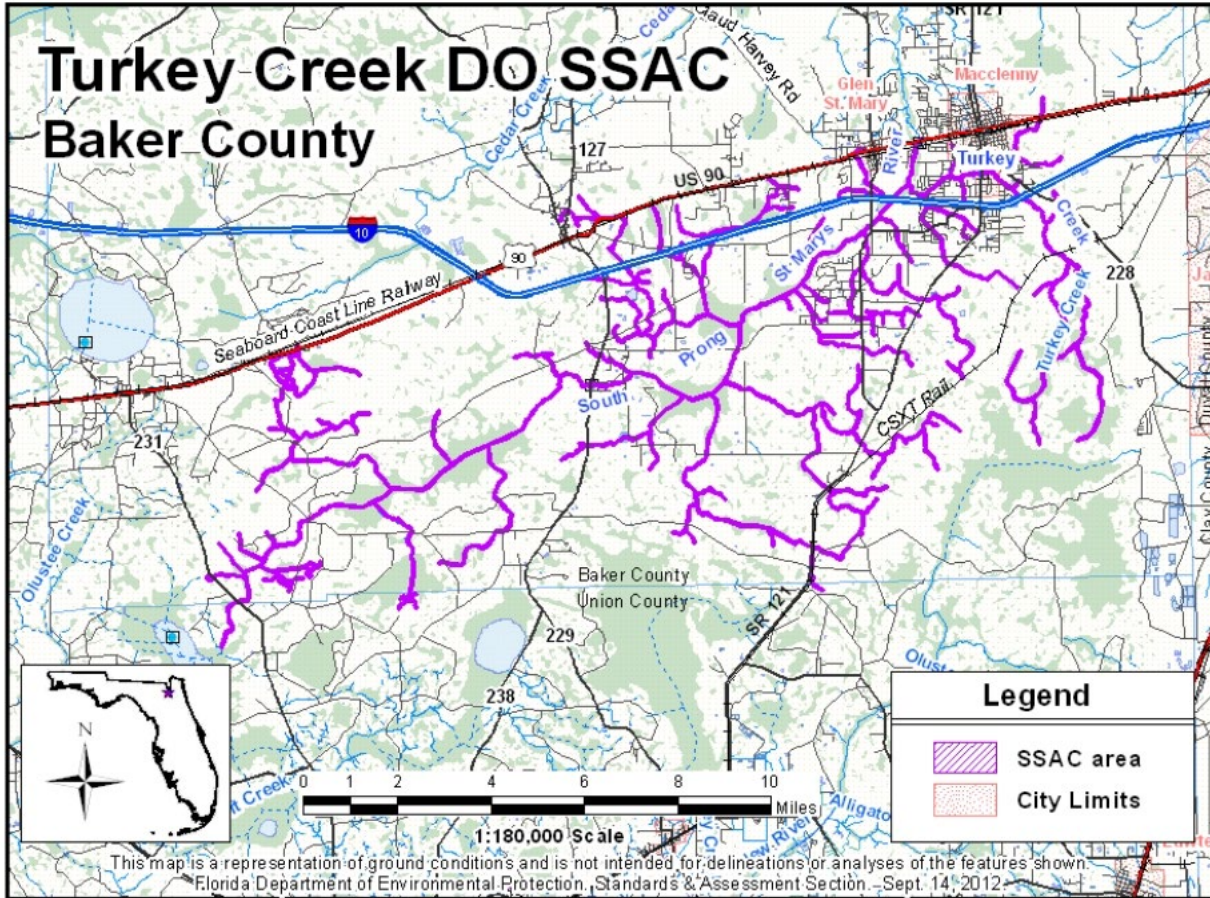


# Thomas Creek SSAC for Dissolved Oxygen Duval and Nassau Counties

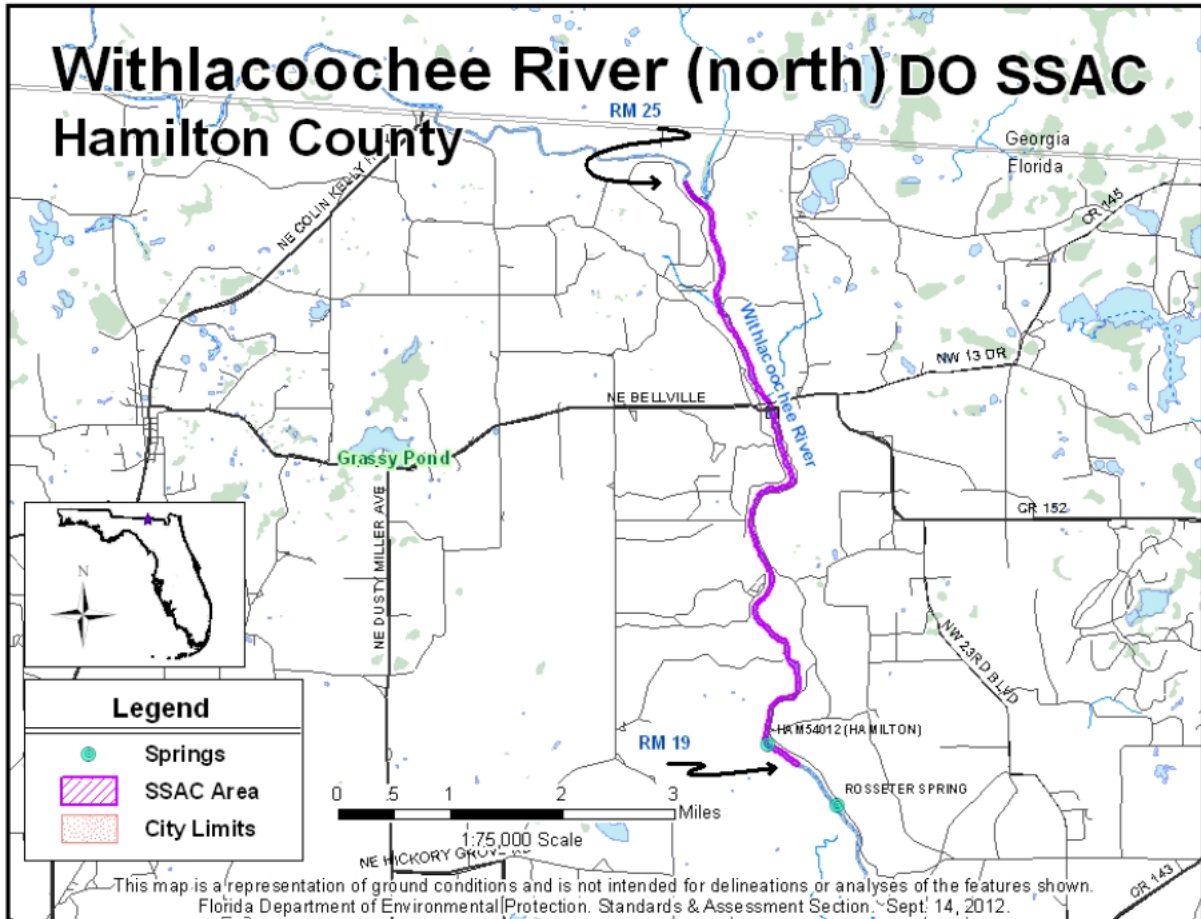


This map is for general display purposes only, not for analysis. Florida Department of Environmental Protection. Water Quality Standards Program. June 16, 2014.

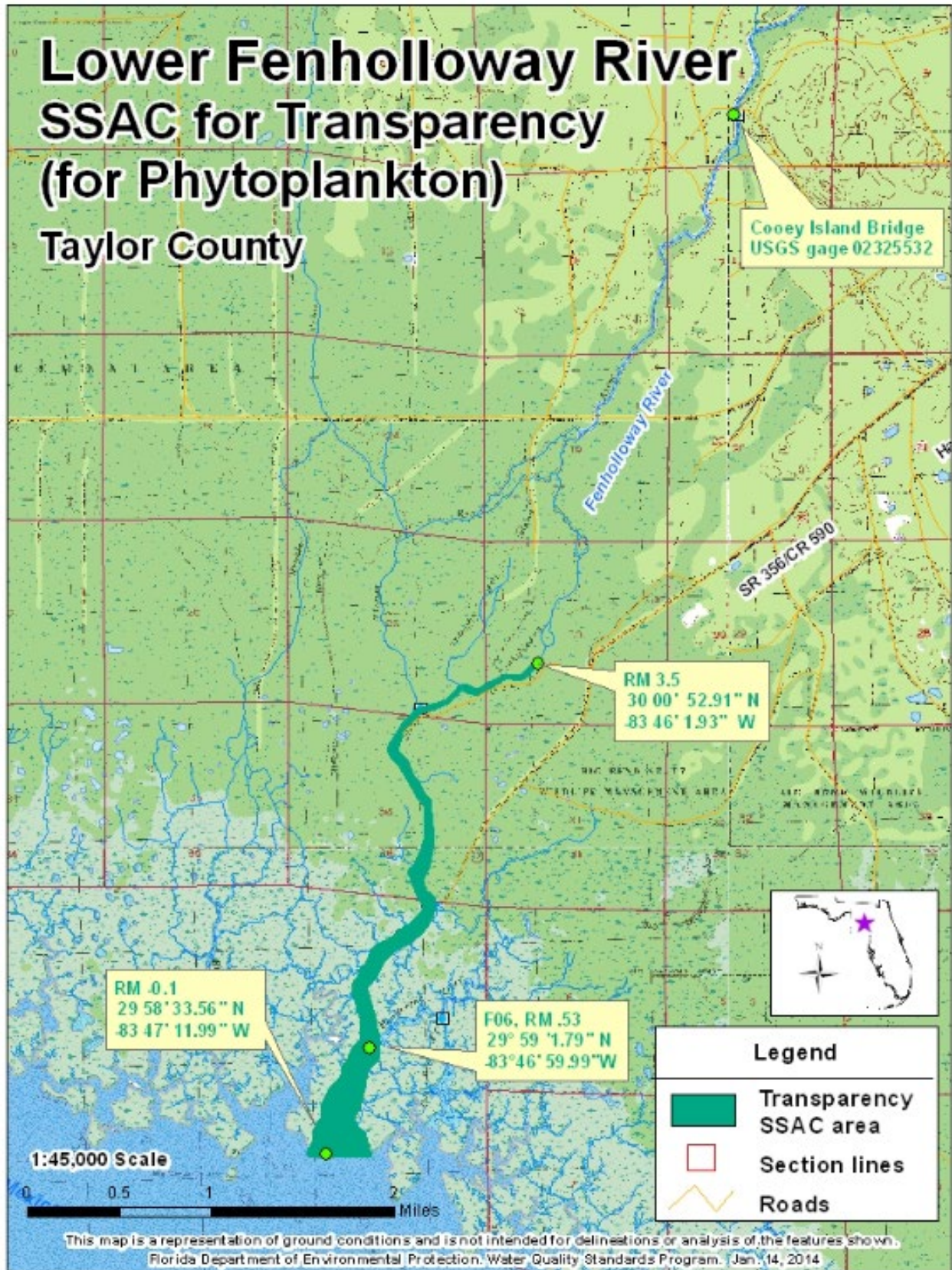
# Turkey Creek DO SSAC Baker County



# Withlacoochee River (north) DO SSAC Hamilton County

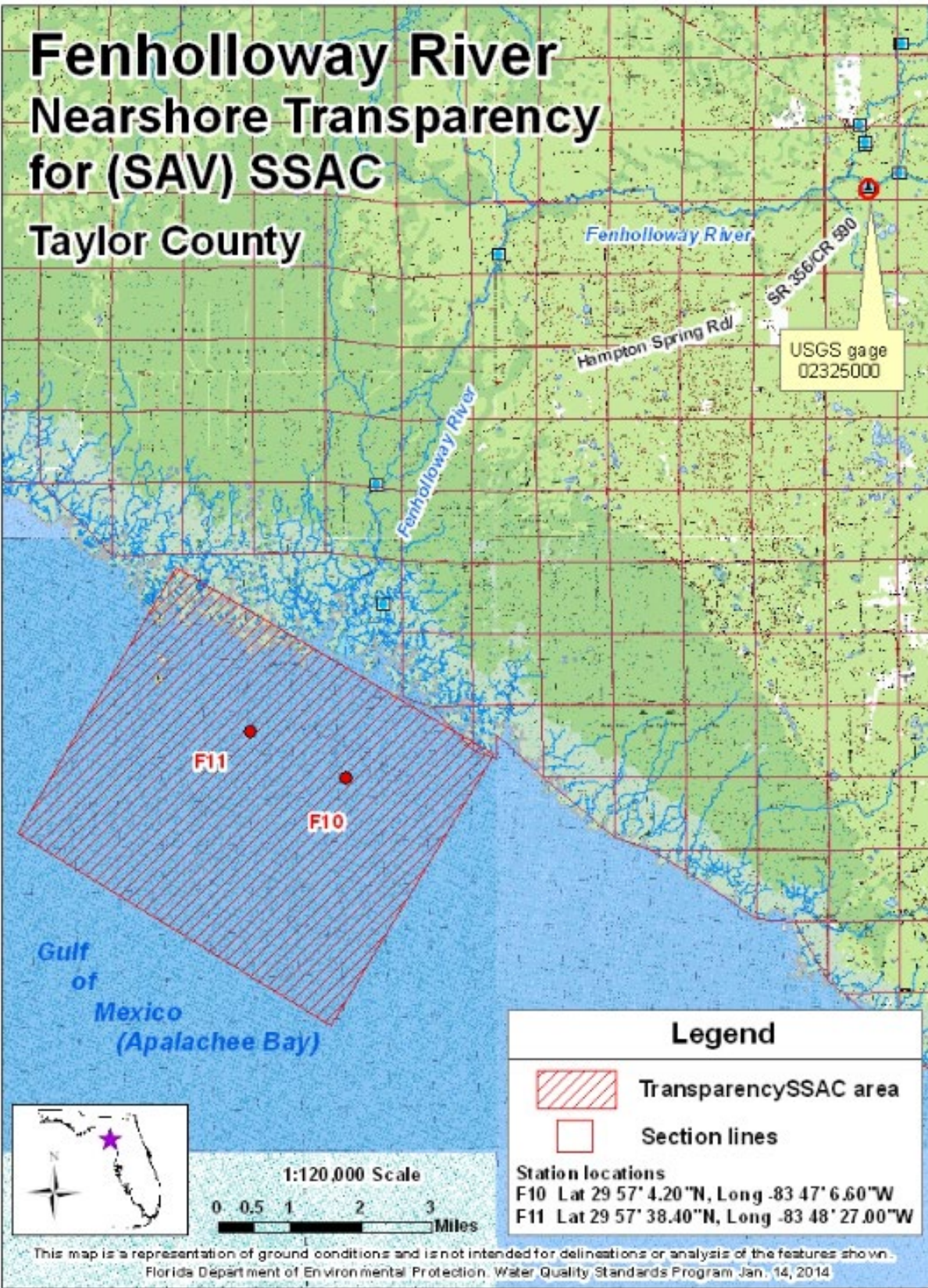


# Lower Fenholloway River SSAC for Transparency (for Phytoplankton) Taylor County

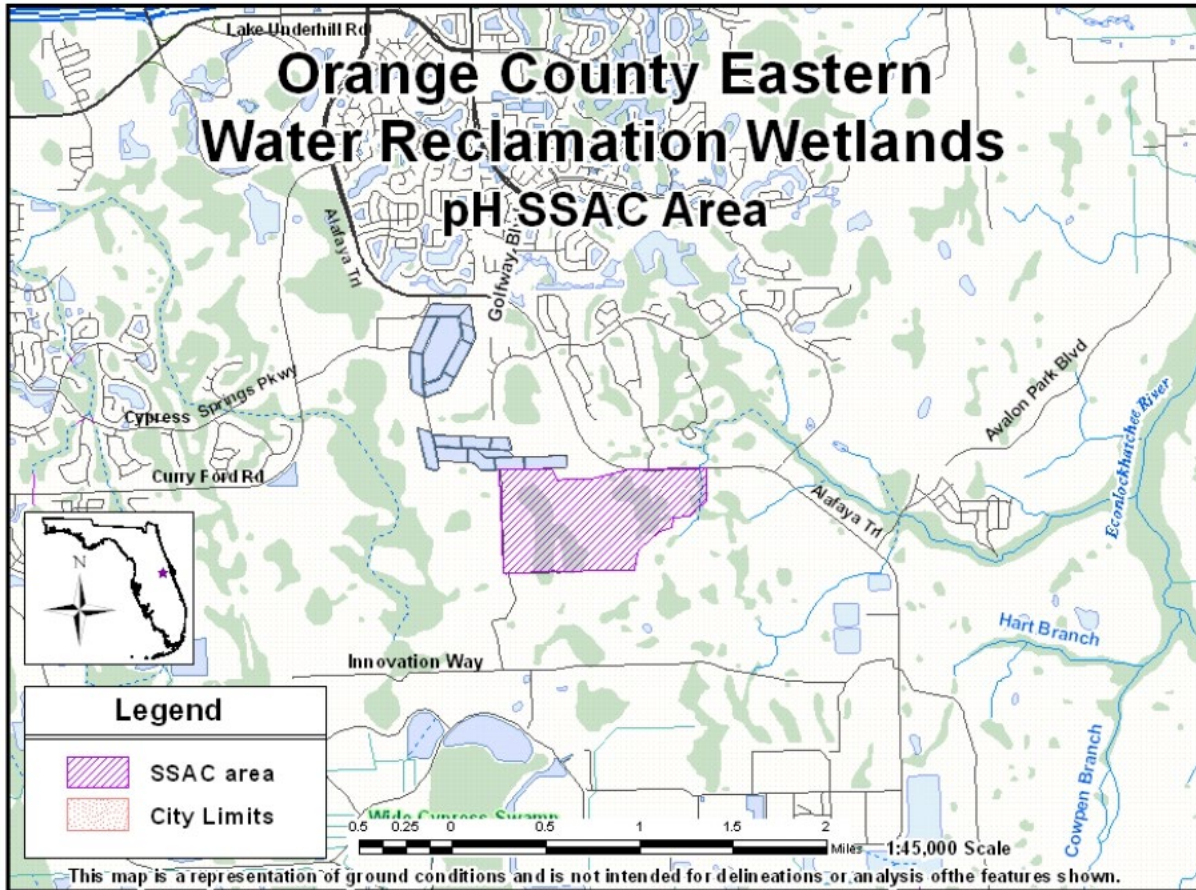




# Fenholloway River Nearshore Transparency for (SAV) SSAC Taylor County



# Orange County Eastern Water Reclamation Wetlands pH SSAC Area



## Pace Swamp pH Site Specific Alternative Criterion Boundary



Map of Pace Wetland with monitoring sites indicated.  
Discharge to the wetland is via a spreader system.  
Santa Rosa County, Florida  
July 1, 2014



# Lower St. Johns River Marine and Estuarine DO SSAC Area

