

## Contents

Part A. General Information.....	2
Part B. Primary MS4 Program Manager Contact Information .....	2
Part C. Eligibility Determination .....	3
Part D. Map/Boundaries.....	3
Part E. MS4 Infrastructure (if covered under the 2006 general permit) .....	5
Part F. Bylaw/Ordinance Development (if covered under the 2006 general permit) .....	5
Part G. Receiving Waters.....	6
Part H. Summary of Stormwater Management Program (SWMP) under the 2006 Small MS4 General Permit .....	6
Part I. 2016 Stormwater Management Program (SWMP) Summary.....	11
Part J. Application Certification and Signature .....	18

**United States Environmental Protection Agency**  
**National Pollutant Discharge Elimination System**  
 Notice of Intent (NOI) for coverage under the Small Municipal Separate  
 Storm Sewer System (MS4) General Permit (PRR040000) for Puerto Rico

**Part A. General Information**

1. Name of Municipality or Organization: Municipality of Utuado
2. Type:  Federal  State  Municipality  Other: \_\_\_\_\_
3. Existing Permittee:  Yes  No If yes, provide EPA NPDES Permit Number: PRR040073
4. Location Address:
  - a. Street: Casa Alcaldia
  - b. 8-26 Cll Dr Betances
  - c. City: Utuado  
 State: PR Zip Code: 00641
5. Mailing Address:
  - a. Street: P.O. Box 190
  - b. City: Utuado State: PR Zip Code: 00641
6. Telephone Number: 787-894-3505 Fax: 787-894-0920
7. E-mail: [secretariamunicipalutuado2021@gmail.com](mailto:secretariamunicipalutuado2021@gmail.com)
8. Standard Industrial Classification (SIC) Code (see instructions for common codes): 9199
9. Latitude: (use the format provided.) Longitude: (use the format provided.)  
 2.2.4.2 *Approximate center of the regulated portion of the MS4.*  
 18° 15 ' 56 ' ' N (degrees, minutes, seconds) 66° 42 ' 02 ' ' W (degrees, minutes, seconds)

**Part B. Primary MS4 Program Manager Contact Information**

1. Name: Bolívar Bermudez Rosado
2. Position Title: Vice-Mayor
3. Stormwater Management Program (SWMP) Location (web address or physical location): Casa Alcaldía, City Administrator, 8-26 Cll Dr Betances, Utuado, 00641.
4. Mailing Address:
  - a. Street: P.O. Box 190

- b. City: Utuado State: PR Zip Code: \_\_00641
5. Telephone Number: 787-487-0684
6. E-mail: [secretariamunicipalutuado2021@gmail.com](mailto:secretariamunicipalutuado2021@gmail.com)

### Part C. Eligibility Determination

1. Endangered Species Act (ESA) determination complete?  Yes  No
- a. Eligibility Criteria (check all that apply)  A  B  C  D  E  F
2. National Historic Preservation Act (NHPA) determination complete? Yes  No
- a. Eligibility Criteria (check all that apply)  A  B  C  D

### Part D. Map/Boundaries

1. MS4/Organization Description of regulated boundaries (narrative):

The Utuado MS4 is currently owned and operated by the municipality under the direction of its mayor, Hon. Jorge Pérez. The Vice-Mayor and City Administration officer will be the responsible to implement and uphold the proposed storm water program. Mr. Bolívar Bermudez, will be the person responsible for assuring the program and maintain its proposed schedule.

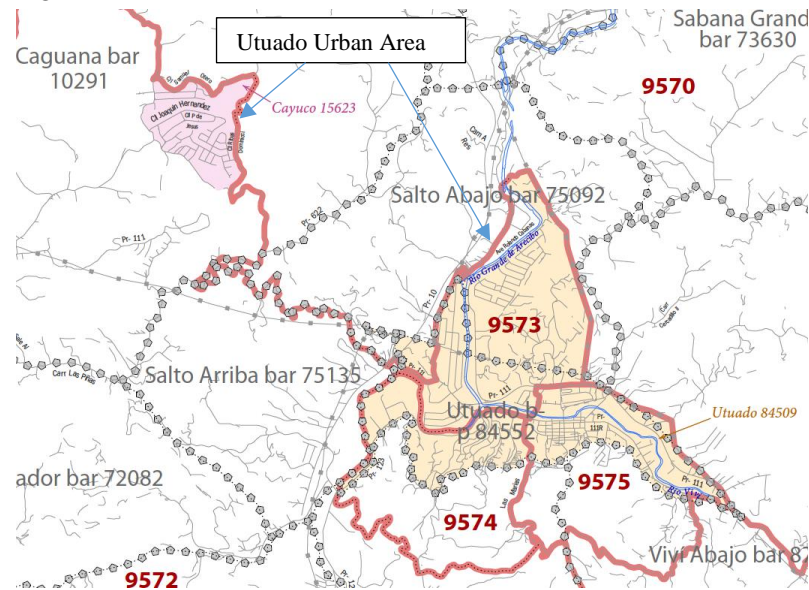
The Municipality of Utuado is one of the municipalities of Puerto Rico and is located in the central / western mountainous region of the island known as the central mountain range at latitude 18 ° 15 '56' 'N and longitude 66 ° 42' 02 " W, and it occupies approximately 115 square miles (mi<sup>2</sup>), or 297.83 square kilometers (km<sup>2</sup>). It is located north of Adjuntas and Ponce; south of Hatillo and Arcibo; east of Lares; and west of Ciales and Jayuya. The name Utuado derives from the Taino word "Otoao", which means "between the mountains".

In terms of land area, it is the third largest municipality in Puerto Rico (after Arcibo and Ponce). According to the 2010 United States Census, the municipality has a population of 33,149 distributed in 24 neighborhoods, including the neighborhood of the town of Utuado (the downtown area and the administrative center of the city). Estimates from the 2017 Community Survey (ACS), administered by the Census Bureau, estimated a population of 30,209 people. The 24 neighborhoods of the Municipality of Utuado are Ángeles, Arenas, Caguana, Caníaco, Caonillas Abajo, Caonillas Arriba, Consejo, Don Alonso, Guaonico, Las Palmas, Limón, Mameyes Abajo, Paso Palma, Río Abajo, Roncador, Sabana Grande, Salto Abajo , Salto Arriba, Santa Isabel, Santa Rosa, Tetuán, Utuado Pueblo, Viví Abajo, and Viví Arriba.

The most important rivers crossing the urban area (the regulated area) are (Figure 1):

- Río Grande de Arecibo which enters the Municipality of Utuado from the south, between the Arenas and Guaonico neighborhoods, flowing north where it empties into the Atlantic Ocean. It defines the west border of the urban area.
- Viví River (7.9 km), which receives water from several streams, including the Utuado stream enters the urban area from the east and joins the Río Grande de Arecibo close to PR-111 road.
- 

Figure 1. Utuado Urban Area (based on the 2010 Census Tract).



On May 26, 2021, using the Information for Planning and Consultation (IPaC) system, it has been determined that the proposed project has **no effect** on the identified species since the project is limited to urban areas, and there will be no expansion or new construction. Per the information provided and after evaluating all the information available, the project area existing conditions does not harbor suitable habitat for the species. Therefore, we believe that there would be no effects. No further consultation is needed.

Finally, In the previous consultation to the Puerto Rico State Historic Preservation Office (PR\_SHPO) under the National Historic Preservation Act it was found that the MS4 operated by Utuado meets Criteria B of the General Permit which states that the storm water discharges from the Municipality of Utuado do not affect a property that is listed or is eligible for listing on the National Register of Historic Places as maintained by the Secretary of the Interior. On May 25, 2021, a second consultation has been done to SHPO and we are waiting for their response which we don't expect to be different.

2. Location Map/Boundaries. A location map must be attached showing the pertinent city, town, wards, or boundaries, the boundaries of the Small MS4, including surface water body(s), and the "urbanized area" (UA) when applicable.

Is map attached?  Yes  No

**Part E. MS4 Infrastructure (if covered under the 2006 general permit)**

1. Estimated Percent of Outfall Map Complete? (*Section 4.2.3 of 2006 general permit*): 10%
- a. If 100% of 2006 requirements are not met, enter an estimated date of completion: 12/30/2021  
(MM/DD/YYYY)
- b. Web address where MS4 map is published: See attached maps (Attachment A)  
*If outfall map is unavailable on the internet an electronic or paper copy of the outfall map must be included with NOI submission.*

**Part F. Bylaw/Ordinance Development (if covered under the 2006 general permit)**

1. Illicit Discharge Detection and Elimination (IDDE) authority adopted?  Yes  No
- a. Effective Date or Estimated Date of Adoption: 06.20.2021  
(MM/DD/YYYY)
2. Construction/Erosion and Sediment Control authority adopted?  Yes  No
- a. Effective Date or Estimated Date of Adoption: 06.20.2021  
(MM/DD/YYYY)

3. Post-Construction Stormwater Management adopted?  Yes  No

a. Effective Date or Estimated Date of Adoption: 06.20.2021  
(MM/DD/YYYY)

**Part G. Receiving Waters**

List the names of all surface waterbody segments to which your MS4 discharges. For each waterbody segment, please report the number of outfalls discharging into it and, if applicable, any impairments. You may attach additional information.

Waterbody Segment that receives flow from the MS4	Number of Outfalls into receiving waterbody segment	Have any monitoring been performed to outfalls? (Yes/No)	List of Pollutant(s) causing impairment (if applicable)	List of TMDL Pollutant (s) (if any)
Rio Grande de Arecibo	18	No	Low Dissolved Oxygen (1200) Turbidity (2500) Copper (0530) Lead (0550) Total Coliforms (1700) Turbidity (2500)	Lead 0.2656 lbs/day Cooper 0.0793 lbs/day
Rio Vivi	23	No		

**Part H. Summary of Stormwater Management Program (SWMP) under the 2006 Small MS4 General Permit**

For every measurable goal and associated Best Management Practice (BMP) listed in the adopted program, provide the following information (You may include additional pages):

BMP Description or BMP ID (e.g. MCM-1)	Goal Achieved (Yes/No)	Continued in next permit cycle? (Yes/No)	Who was the targeted audience? Explain reason for not achieving goal.	Modification(s) to goals or BMP for next permit cycle
<b>Public Education and Outreach</b>				
1. Increase public awareness using media	No	Yes	Builders contractors and developers, municipal workers, landscaping companies, public. Lack of resources and personnel.	Due to the restrictions on meeting and gatherings by COVID19, expand the use to social media.
2. Develop educational material as displays, pamphlets, and booklets.	No	Yes	Schools and public. Lack of resources and personnel.	Include this material on social media, available for downloading.
3. Develop educational campaigns on specific topics as: Landscaping and lawn care, pest control, pet waste, car washing, trash and debris, water conservation and automobile maintenance.	No	Yes	Municipal personnel, public, business, contractors, and industries. Lack of resources and personnel.	Include this material on social media, available for downloading
BMP Description or BMP ID (e.g. MCM-1)	Goal Achieved (Yes/No)	Continued in next permit cycle? (Yes/No)	Who was the targeted audience? Explain reason for not achieving goal.	Modification(s) to goals or BMP for next permit cycle
<b>Public Participation and Involvement</b>				

1. Promote adopt-a-stream and reforestation programs	No	Yes	Community leaders, public, students, business, and	Due to the restrictions on meeting and gatherings by COVID19, expand the use to social media.
2. Promote the participation and volunteers among the community for the implementation (stream clean up, monitoring, and reforestation) of the SWM program.	No	Yes	Community leaders, public, students, business, and	Due to the restrictions on meeting and gatherings by COVID19, expand the use to social media.
<b>BMP Description or BMP ID (e.g. MCM-1)</b>	<b>Goal Achieved (Yes/No)</b>	<b>Continued in next permit cycle? (Yes/No)</b>	<b>Who was the targeted audience? Explain reason for not achieving goal.</b>	<b>Modification(s) to goals or BMP for next permit cycle</b>
<b>Illicit Discharge Detection and Elimination Program</b>				
1. Prepare the stormwater sewer map	No	Yes	Permit area. Regulated community. Lack of resources.	Use of existing digital information (projects), Google Earth and AutoCAD to produce the map. Field confirmation. Incorporate field inspectors.
2. Develop an Ordinance to identified and eliminate illegal discharges.	No	Yes	Public, regulated community.	Include the erosion and sediment control section.
3. Inspection to identify and eliminate illegal discharges to the Stormwater system.	No	Yes	Permit area. Lack of resources and personnel.	Inspection of all projects and activities with the potential of illegal discharges.



4. Training on the program and the ordinance.	No	Yes	Municipal personnel. Lack of resources and personnel.	Develop a training for the municipal personnel.
<b>BMP Description or BMP ID (e.g. MCM-1)</b>	<b>Goal Achieved (Yes/No)</b>	<b>Continued in next permit cycle? (Yes/No)</b>	<b>Who was the targeted audience? Explain reason for not achieving goal.</b>	<b>Modification(s) to goals or BMP for next permit cycle</b>
<b>Construction Site Storm Water Runoff</b>				
1. Develop the erosion and sediment control Ordinance	No	Yes	Public, regulated community. Municipal inspectors. Lack of resources and personnel.	
2. Inspection of erosion and sedimentation controls in construction projects	No	Yes	Municipal personnel. Lack of resources and personnel.	Inspection of all projects and activities with the potential of discharging
3. Develop a protocol to received complaints from the public.	No	Yes	Municipal personnel. Lack of resources and personnel.	Due to the restrictions on meeting and gatherings by COVID19, expand the use to social media.
<b>BMP Description or BMP ID (e.g. MCM-1)</b>	<b>Goal Achieved (Yes/No)</b>	<b>Continued in next permit cycle? (Yes/No)</b>	<b>Who was the targeted audience? Explain reason for not achieving goal.</b>	<b>Modification(s) to goals or BMP for next permit cycle</b>
<b>Post Construction</b>				

<b>1. Develop and apply a protocol to inspect completed projects</b>	No	Yes	Regulated Community. Project development. Lack of resources.	
<b>2. Perform project inspection and maintenance</b>	No	Yes	Regulated Community. Project development. Lack of resources.	
<b>BMP Description or BMP ID (e.g. MCM-1)</b>	<b>Goal Achieved (Yes/No)</b>	<b>Continued in next permit cycle? (Yes/No)</b>	<b>Who was the targeted audience? Explain reason for not achieving goal.</b>	<b>Modification(s) to goals or BMP for next permit cycle</b>
<b>Pollution Prevention/Good housekeeping</b>				
<b>1. Develop inspection and maintenance procedures</b>	No	Yes	Municipal personnel. Lack of resources and personnel.	
<b>2. Prevent pollution at municipal facilities and operations</b>	No	Yes	Municipal personnel. Lack of resources and personnel.	
<b>3. Develop SOPs for critical operations</b>	No	Yes	Municipal personnel. Lack of resources and personnel.	
<b>4. Develop a spill respond and prevention program</b>	No	Yes	Municipal personnel. Lack of resources and personnel.	
<b>5. Train municipal public works employees</b>	Yes	Yes	Municipal personnel	

**Part I. 2016 Stormwater Management Program (SWMP) Summary****Public Education and Outreach (See Section 2.4.2 for detailed information of required BMPs):**

BMP Description or BMP ID (e.g. MCM-1)	Program Description (Describe the program and how it will inspire public participation, e.g. special events, volunteer sampling and monitoring efforts, household hazardous waste recycling, etc.)	Measurable Goal (What is the end result of this program? What indicator will determine the goal has been met? (e.g., participation, amount of sampling performed, waste collected, etc.)
<b>1. Public Education and Outreach</b>	An educated and informed population is crucial for successful implementation and success of this program. If the public understands the importance of the program the municipality will have the support to achieve compliance. Public participation is vital to develop support and a sense of responsibility, to implement the plan according to the itinerary, to provide economic benefits, and to increase the participation in others municipal programs.	
2. Assure public access to SWMP material.	Maintain all documents pertaining the SWMP available to public consulting at an identified location in the municipal building. Notify this on the website	At least one hard copy of the relevant documents of the program (SWMP, Annual reports, educational material, brochures, among others. Electronic files will be available.
3. Maintain a municipal personnel Training Program	Continue offering training on SWMP to the Municipality personnel.	Train 100% of required personnel.
4. Keep an education program for children and youth.	Continue with workshops targeted at school children as well as participants of the summer camps (following COVID19 protocol) sponsored by the municipal government. Due to the COVID19 restrictions, recorded sessions and virtual workshops could be organized to complement the regular sessions until face to face reunions are approved.	Number of participants attending summer camps to be identify by year of attendance and place where the workshop was offered (Following COVID19 protocol).  Number of summer camp offered every year. (Following COVID19 protocol).  Number of virtual sessions & number of participants during virtual sessions.

5. Maintain presence on internet (webpage and/or Social Networks)	Include information and educational messages of the SWMP on the webpage and social networks of the municipality.	Number of posts related to the SWMP Number of comments related to these posts or stormwater issues and activities.

**Public Involvement and Participation** (See Section 2.4.3 for detailed information of required BMPs):

BMP Description or BMP ID (e.g. MCM-1)	Program Description (Describe the program and how it will inspire public participation, e.g. special events, volunteer sampling and monitoring efforts, household hazardous waste recycling, etc.)	Measurable Goal (What is the end result of this program? What indicator will determine the goal has been met? (e.g., participation, amount of sampling performed, waste collected, etc.)
Public Participation and Involvement	Public participation is vital to develop support and a sense of responsibility, to implement the plan according to the itinerary, to provide economic benefits, and to increase the participation in others municipal programs.	
1. Include a Stormwater booth in local fairs.	Sponsor a booth with information on SWMP in at least one major event such as Earth Day, health fairs, local celebrations, among others.  Promote virtual events including at least one related to SWMP topic.	Number of visitors to the booth Number of events  Number of virtual events and participants.
2. Post messages in social networks	Post news and articles related to SWMP Program in the Municipality web page and social media networks.	Number of posts related to the SWMP Number of comments related to these posts or stormwater issues and activities.
3. Manage public complains related to Stormwater	Develop a complain system to attend regular public in topics and issues related to stormwaters.	Number of complaints by the public. Number of solved cases.

**Illicit Discharge Detection and Elimination** (See Section 2.4.4 for detailed information of required BMPs):

BMP Description or BMP ID (e.g. MCM-1)	Program Description (Describe the program and how it will identify and remove illicit connections from the MS4, e.g. new regulations, investigation practices, removal of illicit connections, etc.)	Measurable Goal (What is the end result of this program? What indicator will determine the goal has been met? (e.g., adoption of bylaws/ordinances, amount of investigation performed, identified and removed illicit connections, etc.)
<b>Illicit Discharge Detection and Elimination</b>	Illicit discharges are considered “illicit” because MS4s are not designed to accept, process, or discharge such non-storm water wastes. By reducing illicit discharges storm waters are protected from pollutants.	
1. Reduce organic discharges to the water bodies through the Stormwater system.	Focus on lowering the load of fecal coliforms carry by storm waters, fields inspections will be continued in those areas that lack a sanitary sewer system and use septic tanks for wastewater disposal.	Reduce waste water discharge to the storm water system 100% at the end of the period.
2. <b>Keep monitoring dischargers during dry weather</b>	Create a program to record any discharge during dry weather	Document each discharge and eliminate the discharge.
3. <b>Continue inspections of business to detect illegal discharges</b>	Continue to update the list of the establishments in Utuado and perform periodic inspections of them to assure no illicit connections exist	Inspect 100% of business at the end of the period.
4. <b>Apply the municipal ordinances</b>	Apply the ordinance that establishes penalties and fines to the construction sites found in non-compliance with the Phase II NPDES permit requirements	Number of open and closed cases. Closing 100% of reported illicit discharges.
5. <b>Train the personnel to identify and eliminate illegal discharges.</b>	Continue with the training to the municipality public work personnel, municipality employees and the community on the hazards caused by improper waste disposal. Continue to investigate and carry out an action plan to eliminate all illicit discharges reported.	Number of trainings to be offered. Number of participants.

6. Mapping the stormwater system.	Develop a mapping program of the SW system in the urban areas, including inlets and outlets/outfalls.	Percentage of coverage. Number of inlets, outlets and outfalls.
-----------------------------------	---	--

**Construction Site Stormwater Runoff Control** (See Section 2.4.5 for detailed information of required BMPs):

BMP Description or BMP ID (e.g. MCM-1)	Program Description (Describe the program and how it will help control stormwater runoff at construction sites, e.g. new regulations, construction practices, inspection protocols, etc.)	Measurable Goal (What is the end result of this program? What indicator will determine the goal has been met? (e.g., adoption of bylaws/ordinances, amount of inspections performed and sites actively regulated, etc.)
<b>Construction Sites Run-Off Control</b>	Polluted storm water runoff from construction sites often flows to MS4s and ultimately is discharged into local rivers and streams. The resulting contribution of other pollutants from construction sites can cause physical, chemical, and biological harm to waterways. The Program focus on preventing pollutants from reaching storm waters.	
1. <b>Revise the actual ordinance or create a new one for erosion and sedimentation.</b>	Develop an Ordinance to control erosion and sedimentation.	A revise or new ordinance.
2. <b>Interagency liaison.</b>	Establish liaison with local agencies as PRASA, and DRNE to attend violations to the MS4 permit.	Process 100% of the violations.
3. <b>Maintain inspections on the non-municipal construction activities.</b>	Inspect and report constructions activity causing sediments going to the stormwater system (Prevention of erosion).	Perform a site visit to 100% of the construction projects over 1 hectare.
4. <b>Train personnel and contractors on the SWMP</b>	Provide training to those contractors retained by the municipal government on SWMP and best management practices	Number of trainings offered Number of participants.

<b>5. Maintain inspections on the municipal construction activities.</b>	Carry out field inspections to those construction projects in the municipality of Utuado	Inspect 100% of the projects at least once during the phase of construction.
--	--	--

**Post-Construction Stormwater Management in New Development and Redevelopment** (See Section 2.4.6 for detailed information of required BMPs):

BMP Description or BMP ID (e.g. MCM-1)	Program Description (Describe the program and how it will control stormwater runoff from properties after they are developed, e.g. new regulations, practices, or resources for contractors to use Low Impact Development (LID), etc.)	Measurable Goal (What is the end result of this program? What indicator will determine the goal has been met? (e.g., adoption of bylaws/ordinances, amount of implemented practices, development of capacity building resources, etc.)
<b>Post-Construction Run-Off Control</b>	By developing, implementing, and enforcing a program to address discharges of post-construction storm water runoff from new development and redevelopment areas pollutants reaching storm water can be reduce. Applicable controls could include preventative actions such as protecting sensitive areas (e.g., wetlands) or the use of structural controls	
<b>1. Revise the actual ordinance or create a new one for erosion and sedimentation.</b>	Develop an Ordinance to control erosion and sedimentation.	A revise or new ordinance.
<b>2. Follow up inspections on developed areas</b>	Maintain inspection of the developed areas to monitor the operation of the Stormwater system.	Number of inspections Number of complaints

**Good Housekeeping and Pollution Prevention in Municipal Operations** (See Section 2.4.7 for detailed information of required BMPs):

BMP Description or BMP ID (e.g. MCM-1)	Program Description (Describe the program and how it will mitigate stormwater runoff at municipal properties or through municipal activities, e.g. installation of structural stormwater controls on the municipal properties, new practices to reduce pollutant exposure to rain events, runoff management, trainings, etc.)	Measurable Goal (What is the end result of this program? What indicator will determine the goal has been met? (e.g., structural BMPs installed, SOPs developed and implemented, etc.)
<b>Pollution Prevention/ Good Housekeeping</b>	By implementing a program focus on reducing the amount and type of pollution that collects on streets, parking lots, open spaces, storage and vehicle maintenance areas privation is achieved in discharging pollutants into local waterways; and on cleaning and adequate maintenance to municipality outdoors.	
<b>1. Maintain the stormwater system with emphasis on the key areas.</b>	Clean critical portions of the Utuado storm sewer system at least once per year.	Clean 100% of the critical stormwater drainages.
<b>2. Maintain sweeping activities</b>	Maintain a program of sweeping the streets of Utuado.	Number of areas served Amount of debris removal.
<b>3. Promote waste collection and recycling.</b>	Assist the community by providing waste collection.	Number of services provided. Establish a route and public schedule for debris collection Amount of debris removal.
<b>4. Prepare procedures for key operations.</b>	Develop an SOPs for the handling of wastes, oil, debris and sediments generated during the Municipality operations (Public Works)  Perform periodic inspections to Utuado facilities to verify their compliance with the SWMP.	Number of SOP developed  Number of inspections



<p>5. Maintain water bodies cleaning campaign</p>	<p>Develop a program to clean and remove debris at the Utuado water bodies.</p>	<p>Cleaning at least once per year each water body, and at least twice to those in flooding areas.</p>
<p>6. <b>Train the municipal personnel in key procedures.</b></p>	<p>Train the municipal operations personnel in good housekeeping practices during routine activities such as oil/used oil management, painting, gardening, waste management, cleaning, etc.</p>	<p>Number of trainees per year Train 100% of the municipal operations on the SOP for material and waste storage, handling, and disposal.</p>

**Part I. 2016 Stormwater Management Program (SWMP) Summary (continued)****Part J. Application Certification and Signature**

I certify under penalty of law that this document and all attachments were prepared under my direction or supervision in accordance with a system designed to assure that qualified personnel properly gathered and evaluated the information submitted. Based on my inquiry of the person or persons who manage the system, or those persons directly responsible for gathering the information, the information submitted is, to the best of my knowledge and belief, true, accurate, and complete. I am aware that there are significant penalties for submitting false information, including the possibility of fine and imprisonment for knowing violations.

Signature of Mayor/Elected Official: \_\_\_\_\_



Print Name of Mayor/Elected Official: \_\_\_\_\_

Jorge A. Pizarro Hernandez

Title: \_\_\_\_\_

Alcalde de Utuado

Date: \_\_\_\_\_

27/Mayo/2021.



Edwin E. Muñiz  
 Field Supervisor  
 U.S. Fish and Wildlife Service  
 PO Box 491  
 Boquerón, Puerto Rico 00622  
 Email: [caribbean\\_es@fws.gov](mailto:caribbean_es@fws.gov)

Dear Mr. Muñiz:

The Municipality of Utuado is requesting informal consultation under Section 7 (a)(2) of the Endangered Species Act (Act) (87 Stat. 884, as amended; 16 United States Code 1531 *et seq.*) for the proposed project Municipal Separated Storm Sewer System under EPA permit No. PRR040073, located in the urban areas of the Municipality of Utuado (18° 15 ' 56 ' ' N; 66° 42 ' 02 ' ' W).

The proposed project consists of implementing a Stormwater Management Program (SWMP) through six elements as: public education, public participation, illegal discharge detection and elimination, construction and post-construction runoff management, and pollution prevention of municipal operations.

Using the Information for Planning and Consultation (IPaC) system, we have determined that the proposed project lies within the range of the following federally listed species and critical habitats.

SPECIES (COMMON NAME)	SCIENTIFIC NAME	LISTING STATUS	PRESENT IN ACTION AREA	EFFECT DETERMINATION
<a href="#">Cordia bellonis</a>	Cordia bellonis	Endangered	No	NE
<a href="#">Palo De Nigua</a>	Cornutia obovata	Endangered	No	NE
<a href="#">Puerto Rican Boa</a>	Epicrates inornatus	Endangered	Yes	NE
<a href="#">Puerto Rican Broad-winged Hawk</a>	Buteo platypterus brunnescens	Endangered	No	NE
<a href="#">Puerto Rican Parrot</a>	Amazona vittata	Endangered	No	NE
<a href="#">Puerto Rican Plain Pigeon</a>	Columba inornata wetmorei	Endangered	No	NE

Based on the nature of the project, scope of work, information available, and a careful analysis of the IPaC analysis, we made the following effects determination: the renovation of the MS4 and the fact that since there is no expansion or new construction, and it is limited to urban areas, there are **No Effects (NE)** on the Puerto Rico Boa.



Sonia Cosme <soniacosme@edspuertorico.com>

---

## Solicitud de endoso permiso MS4 del Municipio de Utuado

---

PRSHPO Submissions <submissions@prshpo.pr.gov>  
To: Sonia Cosme <soniacosme@edspuertorico.com>

Wed, May 26, 2021 at 10:53 AM



GOBIERNO DE PUERTO RICO  
OFICINA ESTATAL DE CONSERVACIÓN HISTÓRICA

Saludos!

Acusamos el recibo de su correo electrónico, próximamente uno de nuestros especialistas evaluará su proyecto.

Cordialmente,

**Solimar Resto Feliciano**  
**Asistente Administrativa**  
**Subdelegada Compradora**  
*Administrative Assistant*  
**P.O. BOX 00902-3935**  
**San Juan, P.R. 00902-3935**  
**T. (787) 721-3737 x.2015**  
**F.(787) 7213773**



---

**From:** Sonia Cosme <soniacosme@edspuertorico.com>  
**Sent:** Tuesday, May 25, 2021 7:03 PM  
**To:** PRSHPO Submissions <submissions@prshpo.pr.gov>  
**Subject:** Solicitud de endoso permiso MS4 del Municipio de Utuado

[Quoted text hidden]

---

**Carta SPHO UTUADO consulta.pdf**  
56K

25 de mayo de 2021



Sr. Carlos Rubio Cancela  
Director Ejecutivo  
Oficina Estatal de Conservación Histórica  
P.O. Box 9023935  
San Juan, P. R. 00902-3936

Estimada señor Rubio Cancela:

**RE: Solicitud de Endoso de Aguas de Escorrentías al sistema de Alcantarillado Pluvial del Municipio de Utuado**

El Municipio de Utuado está sometiendo a la Agencia de Protección Ambiental (US EPA por sus siglas en inglés) la notificación de intención (NOI) para la renovación del permiso de descarga de aguas de escorrentías (Permiso Municipal Separated Stormwater Sewer System, MS4, por sus siglas en inglés)(#PRR040073).

Como requisito, la EPA requiere se solicite a la Oficina Estatal de Conservación Histórica una carta de endoso donde concurren con las determinaciones de los criterios del permiso relacionado al National Historic Preservation Act.

Según el mapa donde se señalan los puntos de descarga para el Municipio de Utuado, no se identifica que estas descargas afecten las estructuras registradas en el Registro Nacional de Edificios Históricos para Utuado.

Solicitamos de su oficina un endoso para el Municipio de Utuado, dónde se certifique que el Municipio cumple con el criterio B de la notificación de intención (NOI) de Plan Para el Manejo de Aguas de Escorrentías.

En el Criterio B se establece que no hay propiedades históricas o propiedades elegibles para su inclusión en el Registro Nacional de Edificios Históricos dentro de la zona de los efectos potenciales.

Agradecemos toda la atención que nos brinde en este asunto. EDS es la empresa consultora que asiste al Municipio de Utuado en la preparación de la NOI ante la EPA.

Para cualquier información adicional puede comunicarse con nosotros al 7874136017 o al correo electrónico: [soniacosme@edspuertorico.com](mailto:soniacosme@edspuertorico.com).

Cordialmente,

Sonia Cosme  
Presidente

XC: Catherine Portalatín Pérez  
Oficina Secretaria Municipal  
Apartado 190, Utuado, PR 00641  
Tlf. 787-894-3505 Ext. 2302  
[registrocontratosutu@gmail.com](mailto:registrocontratosutu@gmail.com)

Mr. Edwin Muñiz  
May 25, 2021  
Page 2

To complete the informal consultation process, we are requesting your concurrence for the NLAA determination included in the letter.

Attached to this letter, we are including the documents used to reach our effect determination for the listed species. If more information is required, please contact Sonia Cosme, environmental consultant of the Municipality of Utuado, to [soniacosme@edspuertorico.com](mailto:soniacosme@edspuertorico.com), or 787-4136017.

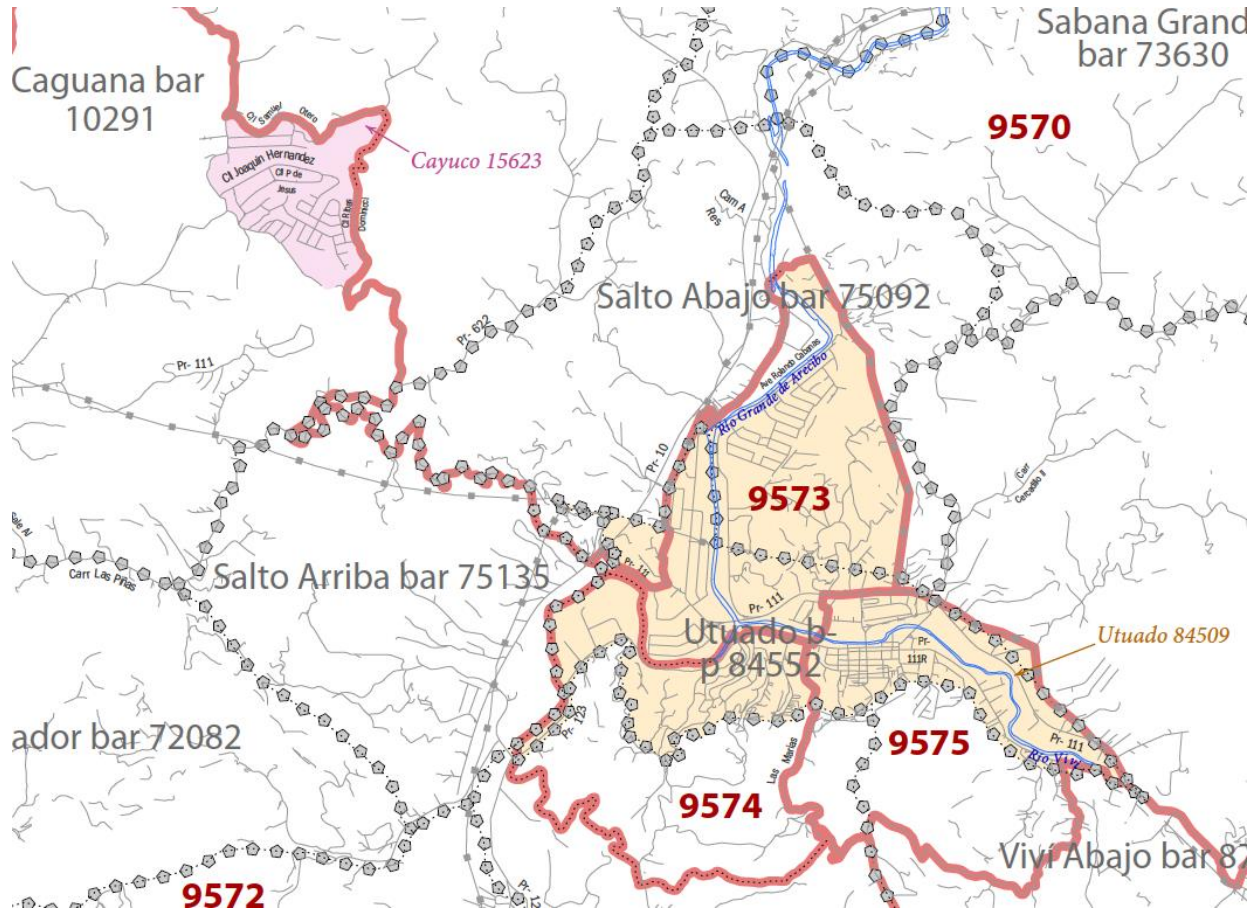
Best Regards,

A handwritten signature in blue ink, appearing to read "Sonia", is centered on a light-colored rectangular background.

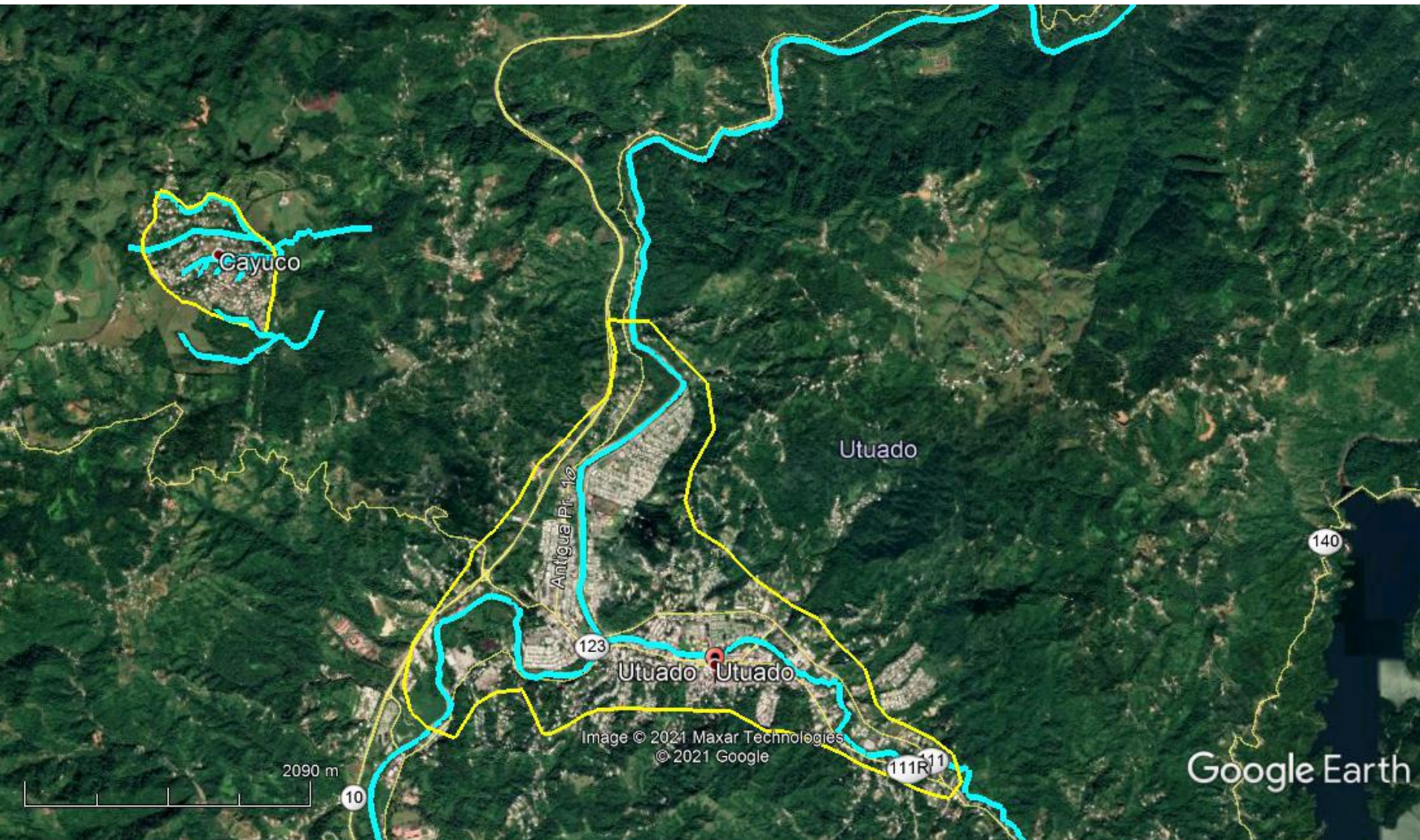
Sonia Cosme  
President

XC: Catherine Portalatín Pérez  
Oficina Secretaria Municipal  
Apartado 190, Utuado, PR 00641  
Tlf. 787-894-3505 Ext. 2302  
[registrocontratosutu@gmail.com](mailto:registrocontratosutu@gmail.com)

UTUADO URBAN AREAS (UTUADO AND CAYUCO POLYGONS) BASED ON CENSUS 2010 TRACK MAP



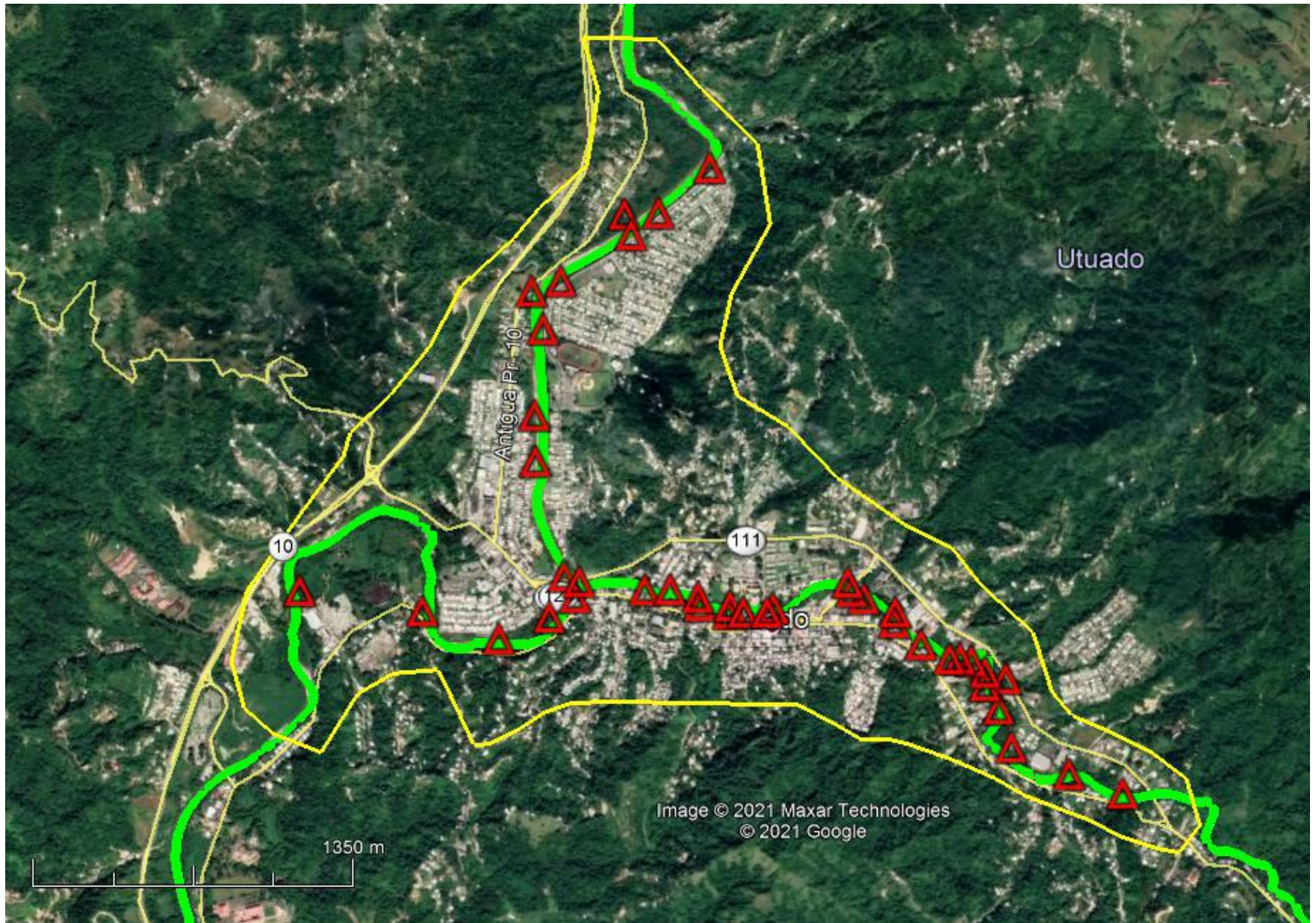
## Map #2. Municipality of Utuado Urban Areas



2010 Census - Census Tract Reference Map overlapping Satellite Image from Google Earth

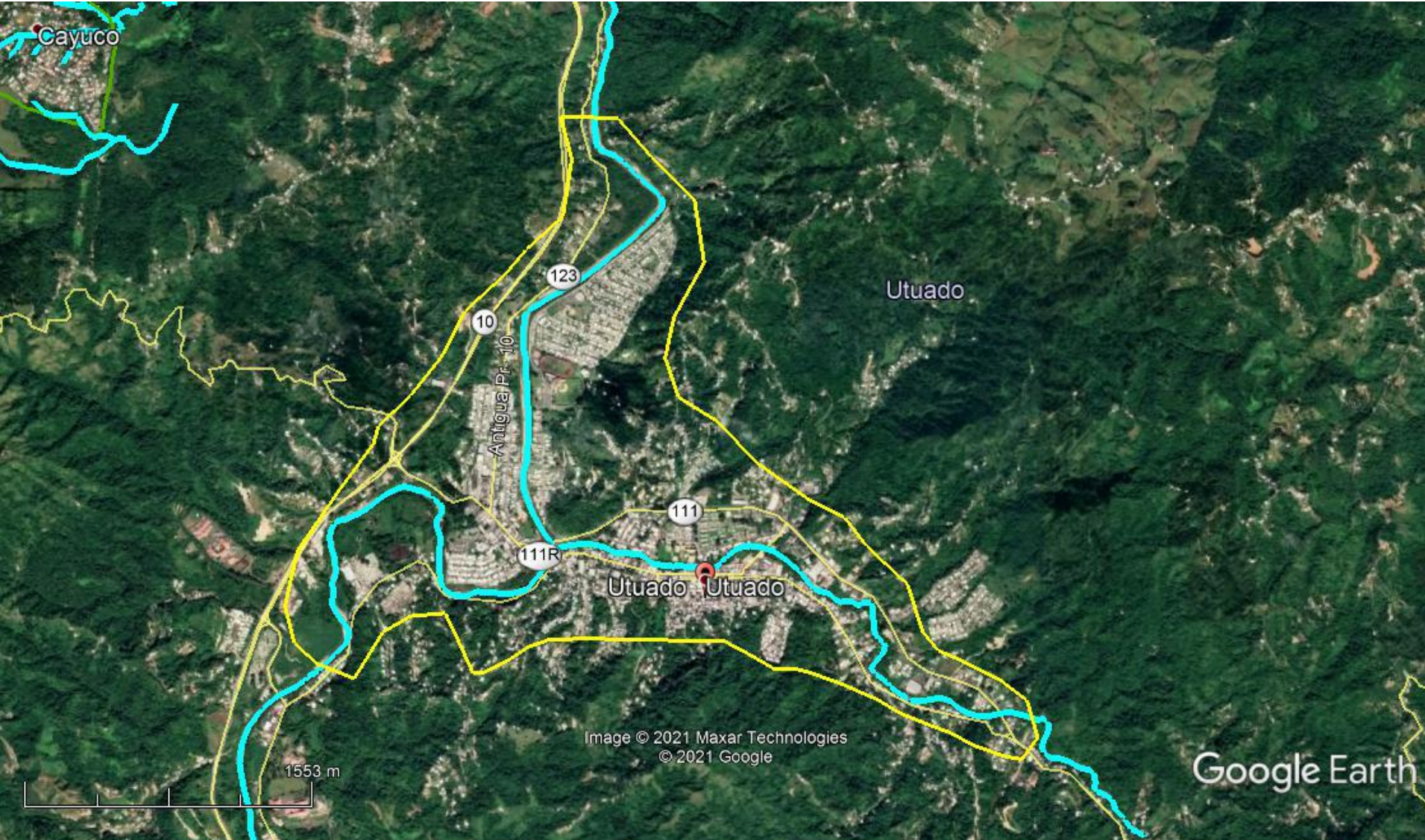


# Map #5. Municipality of Utuado. Number of Outfalls into Receiving Water Segment



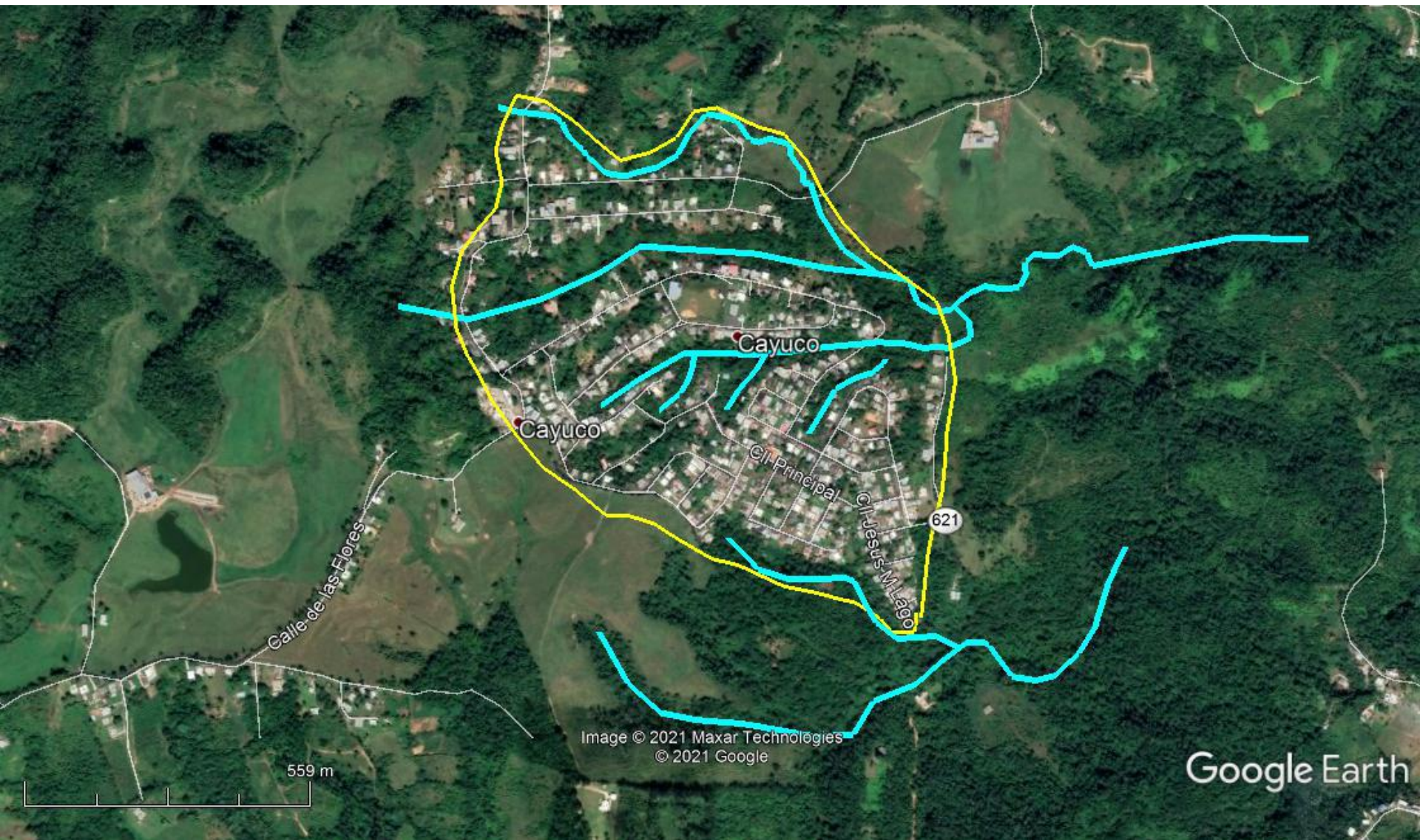
**△ Outfalls (41) located over Rio Grande de Arecibo (18) and over Rio Vivi (23)**

Map #3. Municipality of Utuado Urban Areas: Utuado town polygon and Rio Grande de Arecibo and Rio Vivi (blue line)



2010 Census - Census Tract Reference Map overlapping Satellite Image from Google Earth

Map #4. Municipality of Utuado Urban Areas: Cayuco polygon and streams (blue lines)



2010 Census - Census Tract Reference Map overlapping Satellite Image from Google Earth