

Update | January 2021



EnviroAtlas Update Bulletin

Keep up with the latest in EnviroAtlas news

IN THIS UPDATE

- [New Quick-Start Infographic](#)
- [New Featured Collection](#)
- [Tool Updates | HUC Navigator](#)
- [Eco-Health Browser Updates](#)
- [New Publications](#)

Need a refresher on EnviroAtlas? Check out this infographic!

Been a while since you've checked out the Interactive Map? Use the linked infographic below as a quick refresher, or share it with your friends!

Tips on how to use EPA's EnviroAtlas Interactive Map



Search for data.

Add your own data or find additional data.

Search for your location.

Looking to do more? Analysis Tools can be found here, in this order: Map Tools, ECAT Change Analysis, Compare My Area, Watershed Navigation, Raindrop, Elevation Profile, Save Session, Select

Change your basemap (satellite, etc.).

Use these two buttons to find data layers. The apple-globe icon has environmental data and the house icon has demographic data.

Click the "f" button for a Fact Sheet about each layer.

Ready to use the map you've made? Use the "Snipping Tool" on your computer to take a screenshot.

After you've searched for your location, use these three dots to "Add a Marker."

You can do so much in the Layer List!

- View the legend for your layer by clicking on it
- Use the three dots to the right to alter transparency and/or draw other layers on top

Sample data layers/maps:

Source	Category	Variable
EnviroAtlas Data	Land Cover: Type	Percent Wetlands
EnviroAtlas Data	Hydrologic Features	NHDPlus V2 Features (waterbodies)
EnviroAtlas Data	Political Boundaries	State & County lines
2012-2016 ACS	Income/Poverty	Households below Poverty Level
2012-2016 ACS	Population	Percent population under age 18

Have additional questions? EnviroAtlas@epa.gov

Prefer a step-by-step document? <http://bit.ly/EnviroAtlasWebquest>

New Featured Collection: Metrics for Planning Healthy Communities

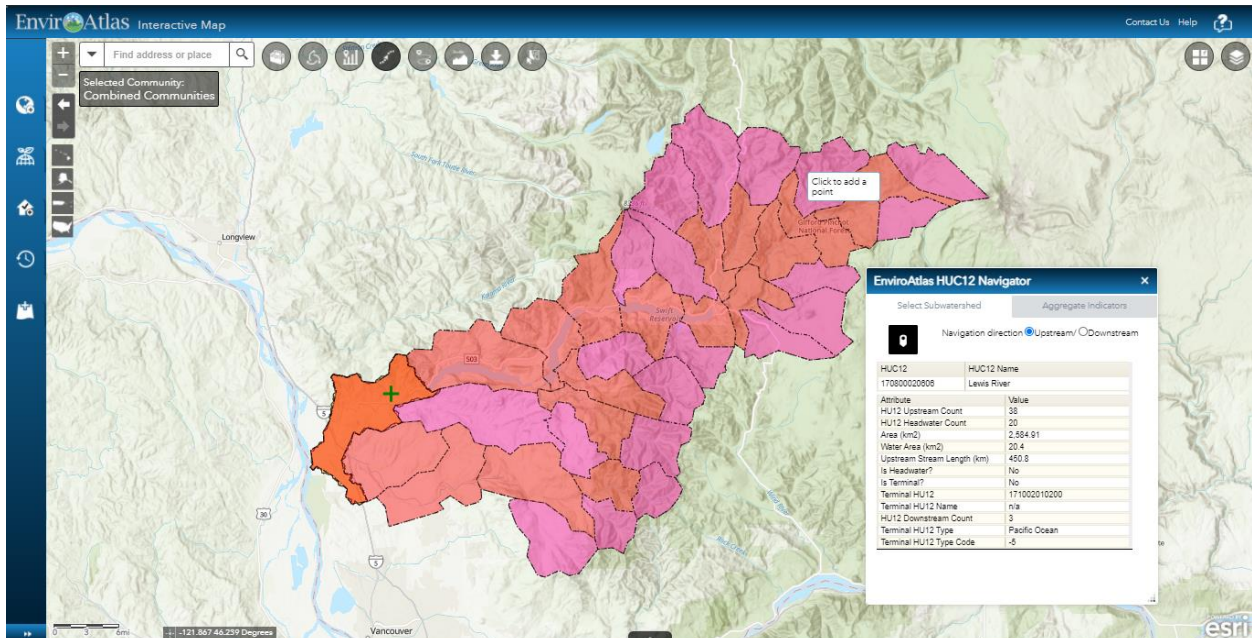
[This featured collection](#) encompasses a suite of EnviroAtlas layers that can be used to complement American Planning Association (APA) "[Metrics for Planning Healthy Communities](#)". These layers specifically orient users toward considering aspects of public health and health inequities in decision-making contexts. Affected areas in a community that lack sufficient resources for healthy living can be quickly prioritized for revitalization efforts and planning proposals.



Tool Updates

The HUC Navigator is more powerful than ever! Updates include:

- Aggregate Indicators - the ability to aggregate (summarize) indicators for the upstream or downstream area from a specific subwatershed (HUC12).
- Headwaters identification - Headwater subwatersheds (starting points) and terminus (ending points) are identified.



[Explore these updates and more in the EnviroAtlas Interactive Map >>](#)

Eco-Health Relationship Browser Updates

Expanded health topics include:

- ADHD
- Cardiovascular Disease
- Fatigue
- High Blood Pressure
- Mortality
- Obesity

The [Eco-Health Relationship Browser](#) also features a new linkage between Heat and Cognitive Function. Finally, the online Bibliography now surpasses 1,000 references.

Bibliography Eco-Health Relationship Browser: Public Health Linkages to Ecosystem Services **Cognitive Function**

Cognitive Function

Cognitive function refers to a person's ability to process thoughts. Cognition primarily refers to things like memory, the ability to learn new information, speech, and reading comprehension. Cognitive function can become impaired as a result of aging, head trauma or the presence of disease such as Alzheimer's.

Organ System

Nervous

Known Contributing Factors

Exercise, Diet, Sleep, Aging, Disease

Trend In Incidence

Cognitive function can become impaired as people grow older and may develop conditions such as dementia. Alzheimer's disease is the 5th leading cause of death among those 65 and older in the United States.

References

[Power and Weisskopf et al., 2010](#); [CDC](#)

New Publications

[New Science Matters article](#)

The EnviroAtlas team was recently featured in an article in the EPA's Science Matters blog series. Read ['Answering the Call'](#) to learn how the team has supported virtual learning during the COVID-19 pandemic!

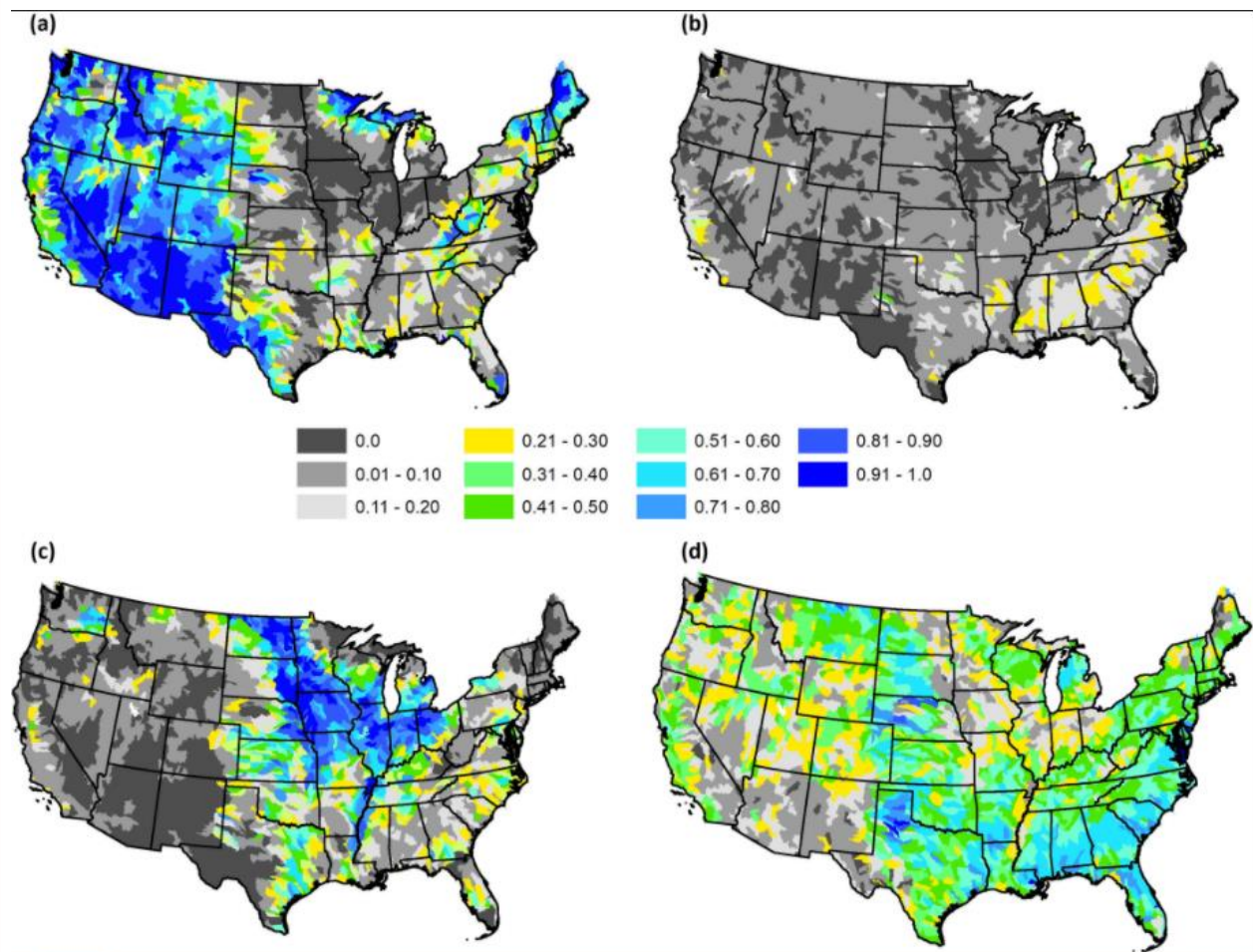
New Publications

EnviroAtlas team members collaborated with their symposium co-presenters to author a review paper following the 2020 annual meeting of the Ecological Society of America. The paper summarizes the findings of the ESA symposium "Integrating Human Health and Ecosystem Services".

Hahn, I., B. Dyson, A. Neale, R. Gould, P. Huber, K. Biedenweg, J. Hochard, and A. Geller. (2021). Review of ESA 2019 SYMP 8: Integrating Human Health with Ecosystem Services—Research to Provide Practical Tools for Healthier and More Resilient Communities. *Bulletin of the Ecological Society of America*, 102(1), e01786. <https://doi.org/10.1002/bes2.1786>

The EnviroAtlas team also has a new publication on the ecological conditions at stream confluences across the U.S., out in *Journal of the American Water Resources Association*.

Ebert, D., Wickham, J., Neale, A., and Mehaffey, M.. 2020. " A Landscape Assessment and Associated Dataset of Stream Confluences for the Conterminous U.S.." *Journal of the American Water Resources Association* 1– 13. <https://doi.org/10.1111/1752-1688.12899>.



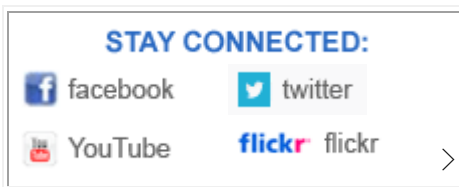
Proportion of confluences within 8-digit hydrologic units (HUC 8) in (a) good, (b) moderate, (c) poor, and (d) contrasting ecological conditions.

EnviroAtlas provides geospatial data, easy-to-use tools, and other resources related to ecosystem services, their stressors, and human health.

Have question or comments for the EnviroAtlas team? [Contact us!](#)



You can view or update your subscriptions or e-mail address at any time on your [Subscriber Preferences Page](#). All you will need is your e-mail address. If you have any questions or problems e-mail subscriberhelp.govdelivery.com for assistance.



This email was sent to jenkins.molly@epa.gov using GovDelivery Communications Cloud on behalf of: U.S. EPA Office of Research and Development · 1200 Pennsylvania Avenue NW · Washington DC 20460 · 202-564-4355

GOVDELIVERY