

Update | July 2021



EnviroAtlas Update Bulletin

Keep up with the latest in EnviroAtlas news

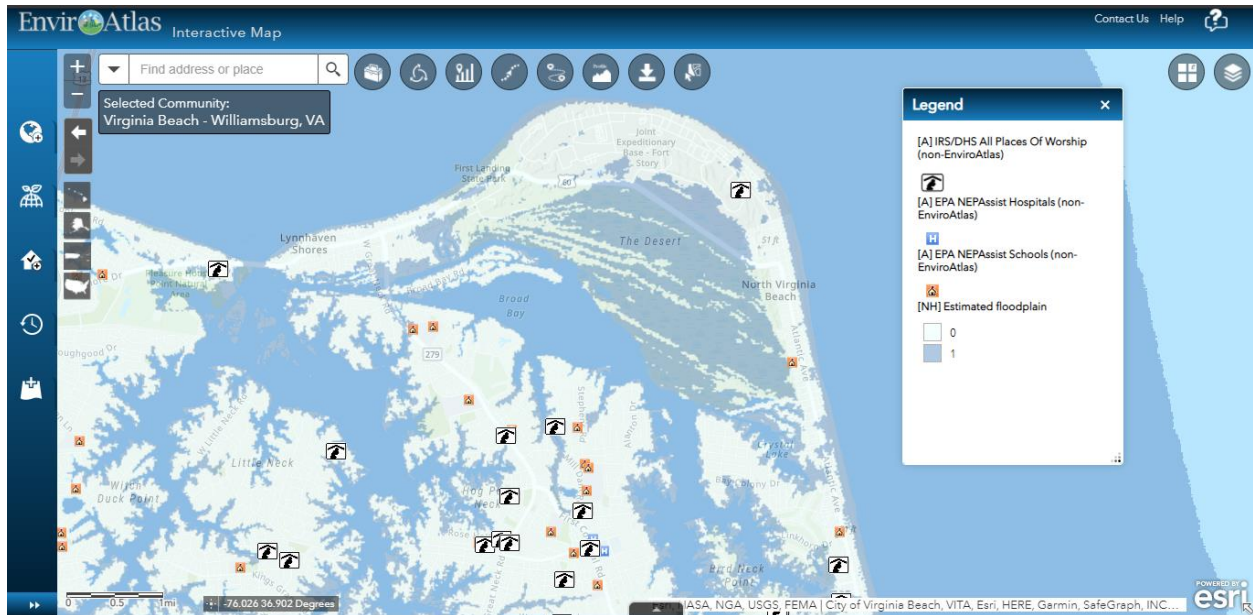
IN THIS UPDATE

- [New Tools & Data](#)
 - [Brownfields Section Highlight](#)
 - [New Publications](#)
 - [Updated HIA Guide](#)
-

New Tools & Data

New Resilience Featured Collection

The Community Resilience featured collection, centered on Virginia Beach, utilizes the framework developed in [EPA's Regional Resilience Toolkit](#) to highlight assets, vulnerabilities, and natural hazards across the U.S. to help communities self-assess for resilience. As communities make plans for resilience against natural disasters and other impacts of climate change, they can consider protective factors and vulnerabilities that affect how well they can successfully weather short-term challenges. The combination of data layers included in this collection allows communities in the U.S. to identify areas where residents may need extra help in times of crisis, where they have limited access to information, and the condition of the natural and built environments they live in. [Access the collection from the Featured Collections data tab in the Interactive Map.](#)



Updated Demographic Widget

The Demographic widget is now updated to incorporate 2014-2018 American Community Survey (ACS) data. The *Compare My Area* tool in EnviroAtlas reflects these updates to the demographic data. EnviroAtlas continues to update the demographic data as new data become available.

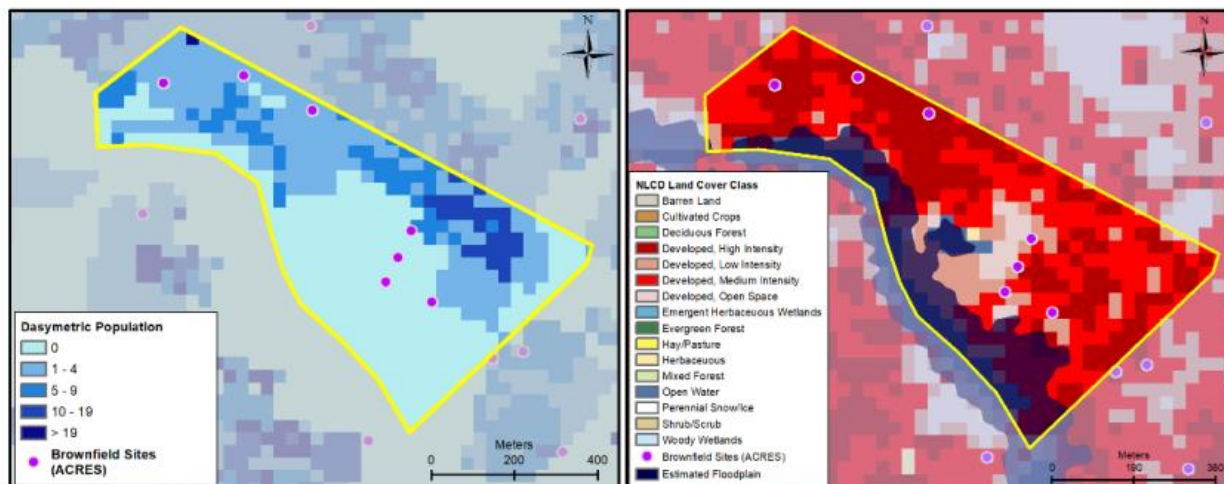
Updated Interactive Map Help

There is now an updated [Interactive Map Help page](#) with advanced guidance on features and functions. In conjunction with the tutorial story map and demonstration videos available from our [tutorials page](#), this new help page replaces the previous EnviroAtlas User's Guide.

[Explore these updates and more in the EnviroAtlas Interactive Map >>](#)

Brownfields Section Highlight

The [EnviroAtlas webpage on Brownfields](#) was developed specifically for using EnviroAtlas to aid in brownfields related decision making. The webpage centralizes brownfields-relevant EnviroAtlas data, maps and tools, and other resources to help aid communities in their assessment and redevelopment efforts. The EnviroAtlas team is currently working with stakeholders to refine these resources and explore additional needs.



Example EnviroAtlas maps in Wilmington, DE. Left: downscaled population and existing brownfield sites. Right: potential hotspots and flood-prone areas

New Publications

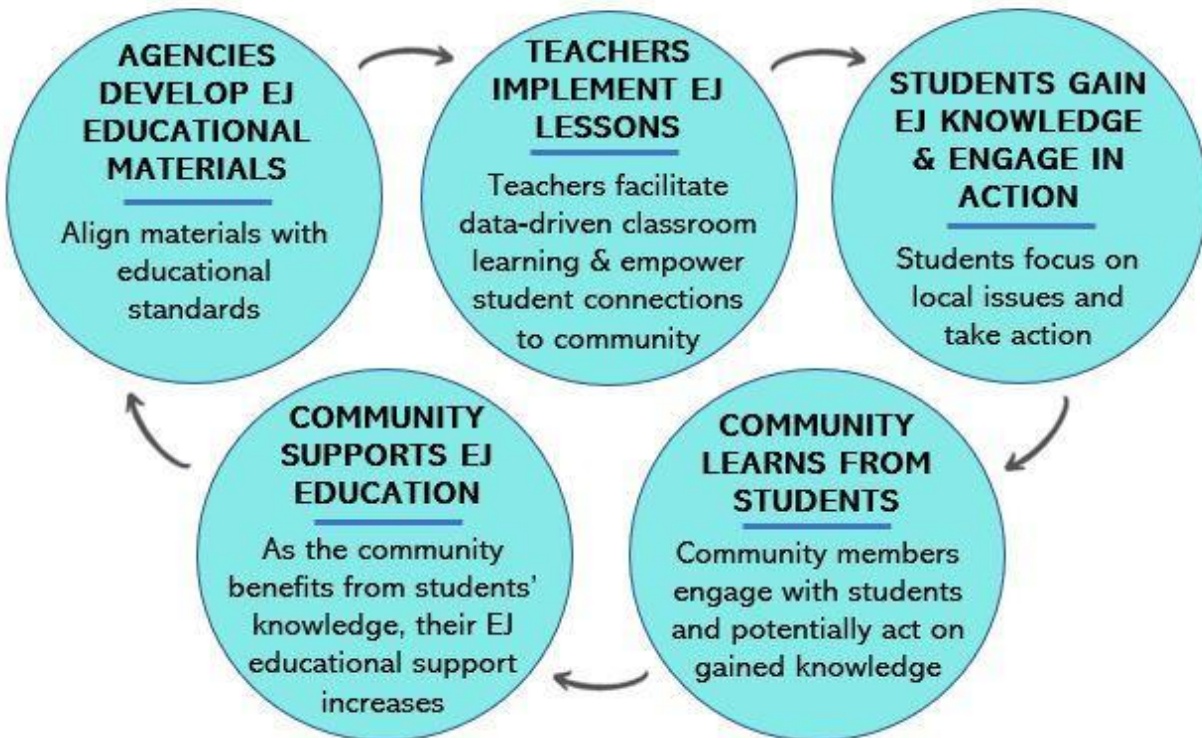
Neighborhood Greenery and Obesity in Women

Wei-Lun Tsai and several other EnviroAtlas team members published a new study examining women's health outcomes, specifically associating a decreased risk of obesity with neighborhood greenery. The article, titled "[Types and spatial contexts of neighborhood greenery matter in associations with weight status in women across 28 U.S. communities](#)" was published in the August 2021 edition of *Environmental Research*.

Environmental Justice Education and Mapping Tools

The EnviroAtlas team recently published "[Empowering environmental justice decision-makers: increasing educational resources for US EPA's mapping tools](#)" in the journal *Environmental Justice* along with co-authors from the EPA's Office of Environmental Justice (OEJ). The article addresses both the need and opportunity for increased environmental justice educational initiatives that leverage EPA mapping tools such as [EnviroAtlas](#) and [EJSCREEN](#).

Proposed Model for Youth-led EJ Action



Updated HIA Guide

Check it out! The [Health Impact Assessment](#) guide is updated to reflect the current version of the Interactive Map, including new features and built-in tools, and updates to the Eco-Health Relationship Browser. The majority of the original document text and its substance remains unchanged.

Health Impact Assessment (HIA) & EnviroAtlas



EnviroAtlas provides geospatial data, easy-to-use tools, and other resources related to ecosystem services, their stressors, and human health.

Have question or comments for the EnviroAtlas team? [Contact us!](#)



You can view or update your subscriptions or e-mail address at any time on your [Subscriber Preferences Page](#). All you will need is your e-mail address. If you have any questions or problems e-mail subscriberhelp.govdelivery.com for assistance.

STAY CONNECTED:



facebook



twitter



This email was sent to jenkins.molly@epa.gov using GovDelivery Communications Cloud on behalf of: U.S. EPA Office of Research and Development · 1200 Pennsylvania Avenue NW · Washington DC 20460 · 202-564-4355

