

Update | October 2020



## EnviroAtlas Update Bulletin

Keep up with the latest in EnviroAtlas news

---

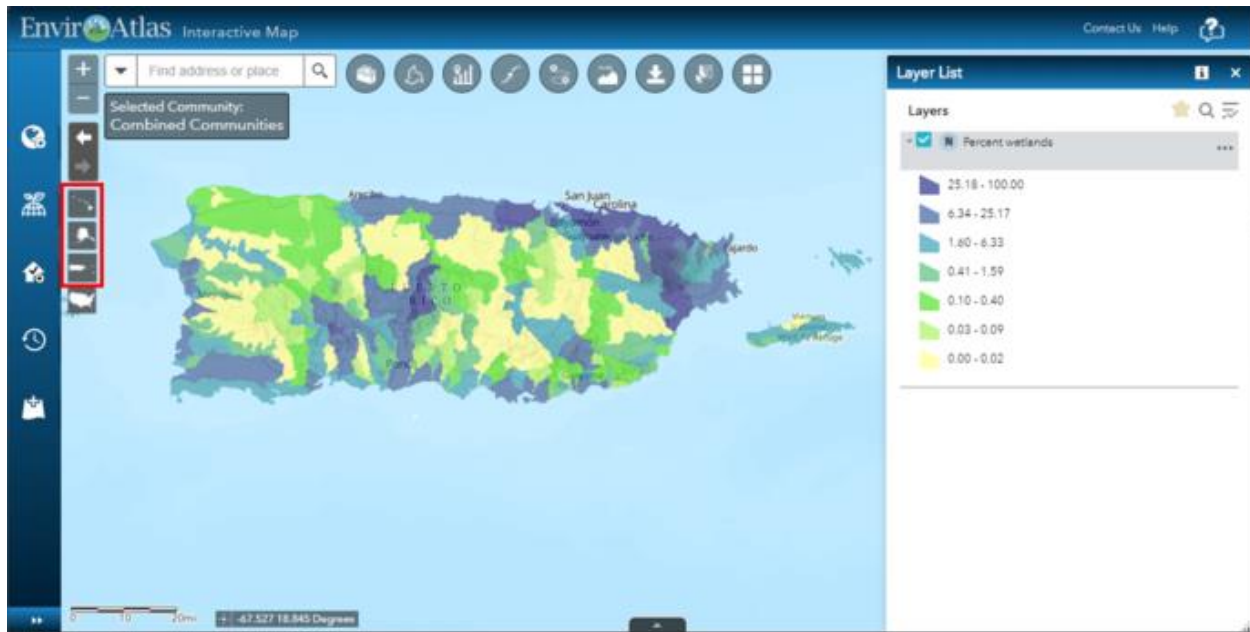
### IN THIS UPDATE

- [Tool Updates & Additions](#)
  - [New Publications](#)
  - [Eco-Health Browser Updates](#)
  - [Data Matrix Updates](#)
  - [Join the EnviroAtlas Team!](#)
- 

### Tool Updates & Additions in the Interactive Map

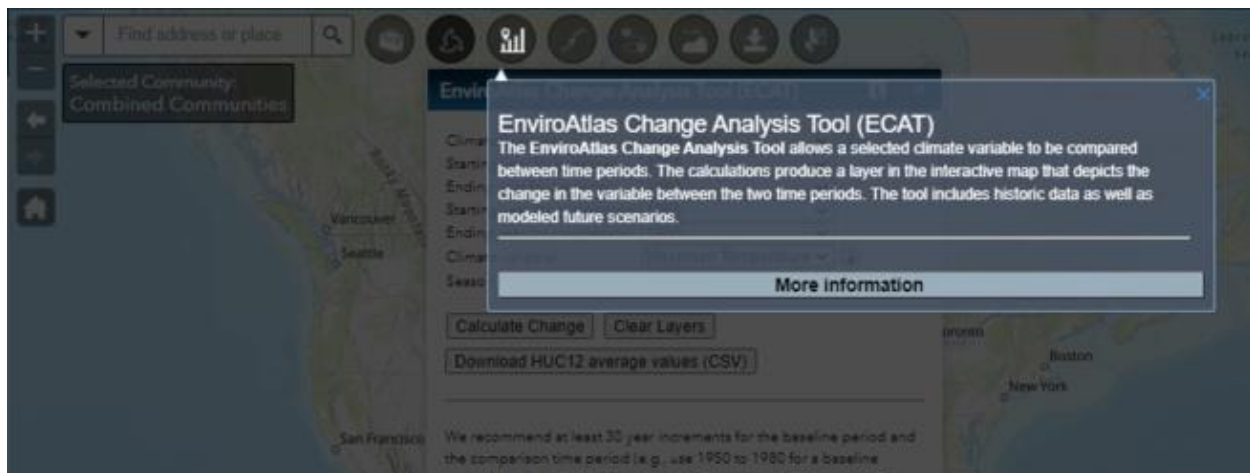
#### Alaska, Hawaii, Puerto Rico & US Virgin Islands data

The latest update includes the addition of a subset of data (~30 layers) in the mapping application for Alaska, Hawaii, Puerto Rico, and the US Virgin Islands. In the mapping application, select the extent using the new widgets to the left (highlighted in red below) to subset the data layers to those available for HI, AK, PR or USVI.



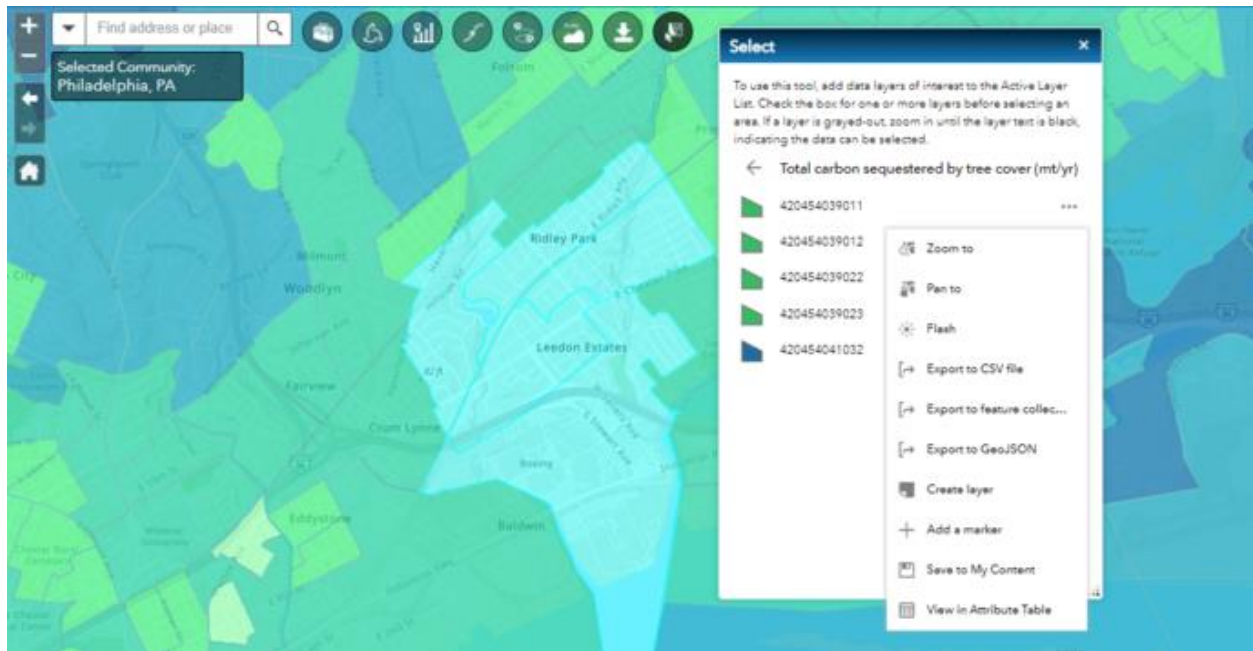
## Help tool updates

All of the tabs and widgets in the Interactive Map now feature extended help documentation. Click on a widget or tab and locate the "i" icon; clicking it will open help documentation and links to video tutorials on how to use that tool or feature.



## Did you know?

The *Select* tool in EnviroAtlas enables users to visually hone in on data in the map associated with a particular location. Users can subset data by geographic location prior to download, cutting down file sizes and download times.



[Explore the tools in the EnviroAtlas Interactive Map >>](#)

## New Publications



The EnviroAtlas team has published two new papers recently, on 1) women's general health and 2) sediment retention. Check out the full citations below!

1. Tsai, W.L., Silva, R.A., Nash, M.S., Cochran, F.V., Prince, S.E., Rosenbaum, D.J., D'Aloisio, A.A., Jackson, L.E., Mehaffey, M.H., Neale, A.C. and Sandler, D.P. (2020). How do natural features in the residential environment influence women's self-reported general health? Results from cross-sectional analyses of a US national cohort. *Environmental Research*, [109176](#).

2. Woznicki, S. A., Cada, P., Wickham, J., Schmidt, M., Baynes, J., Mehaffey, M., & Neale, A. (2020). Sediment retention by natural landscapes in the conterminous United States. *Science of The Total Environment*, 745, [140972](#).

## Eco-Health Browser Updates

The Eco-Health Relationship Browser has revised and expanded content, and now includes summaries of research through 2018 on:

- Air quality impacts of trees
- Urban heat island mitigation
- Ecological water filtration
- Water quality links to health
- Birth outcomes and outdoor environments
- Vision - *new health outcome!*

The screenshot displays the 'Eco-Health Relationship Browser: Public Health Linkages to Ecosystem Services' interface. The main content area features a central 'Vision' node (represented by a person icon) connected to four surrounding nodes: 'Recreation & Physical Activity' (top), 'Aesthetics & Engagement With Nature' (left), 'Heat Hazard Mitigation' (right), and 'Water Quality' (bottom). Each connection is marked with a small 'i' icon. The right sidebar is titled 'Vision' and contains the following text:

**Vision**  
Vision difficulties can result in significant impacts on daily life activities. Vision problems include blindness, low vision, refractive errors (nearsightedness, farsightedness, astigmatism), and others.

**Organ System**  
Eyes and Vision

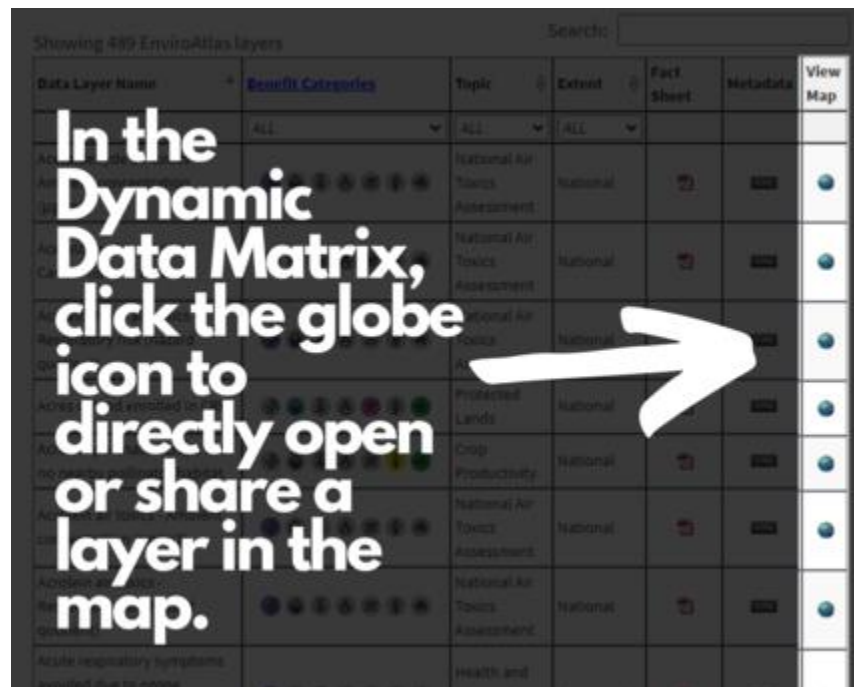
**Demographics**  
Many of the diseases that cause low vision are more common in older adults, for example glaucoma. Other causes of vision impairment, like myopia (nearsightedness), typically develop in childhood. The distribution of the various eye conditions varies by area of residence, income level, age and gender.

**Known Contributing Factors**  
Aging, genetics, infections, nutrition, smoking, UV exposure, pre-term birth and health conditions like diabetes. Development and progression of myopia (nearsightedness) may be impacted by near-work activity (reading, writing, computer use) and

[Explore the Eco-Health Relationship Browser now! >>](#)

[Updated data matrix](#)

The data matrix has been revised and now allows users to share and link directly to specific map layers. Click the globe in the View Map column to open the map directly. Interested in alerting a colleague to the green space per capita layer in the map? Right click. Copy link. Paste. It's that easy.



Data Layer Name	Benefit Categories	Topic	Extent	Fact Sheet	Metadata	View Map
National Air Toxics Assessment	ALL	National Air Toxics Assessment	National			
National Air Toxics Assessment	ALL	National Air Toxics Assessment	National			
National Air Toxics Assessment	ALL	National Air Toxics Assessment	National			
Protected Lands	ALL	Protected Lands	National			
Crop Productivity	ALL	Crop Productivity	National			
National Air Toxics Assessment	ALL	National Air Toxics Assessment	National			
National Air Toxics Assessment	ALL	National Air Toxics Assessment	National			
Acute respiratory symptoms	ALL	Health and				

[Try out the Dynamic Data Matrix! >>](#)

---

## Join the EnviroAtlas team!

Are you a fan of the EnviroAtlas project? Are you a recent grad (<2 years postgrad)? We are hosting a paid internship position through the ORAU program! Check out the link below and apply today!

- [GIS Support for the EnviroAtlas](#)

---

**EnviroAtlas provides geospatial data, easy-to-use tools, and other resources related to ecosystem services, their stressors, and human health.**

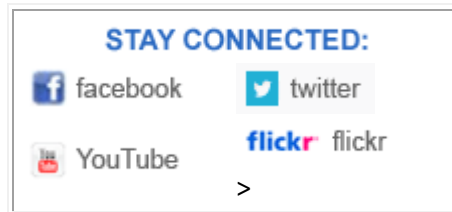
---

## Have question or comments for the EnviroAtlas team? [Contact us!](#)

---



You can view or update your subscriptions or e-mail address at any time on your [Subscriber Preferences Page](#). All you will need is your e-mail address. If you have any questions or problems e-mail [subscriberhelp.govdelivery.com](mailto:subscriberhelp.govdelivery.com) for assistance.



---

This email was sent to [jenkins.molly@epa.gov](mailto:jenkins.molly@epa.gov) using GovDelivery Communications Cloud on behalf of: U.S. EPA Office of Research and Development · 1200 Pennsylvania Avenue NW · Washington DC 20460 · 202-564-4355

