

# **Public Meeting to Discuss EPA's Proposed Remedy under the Corrective Action Program for MAX Environmental, Bulger PA**

**7:00pm Tuesday, October 5, 2021**

**CDR Griff Miller, EPA Remedial Project Manager**

**Alizabeth Olhasso, EPA Pennsylvania Remediation Branch Chief**

**Kinshasa Brown, EPA Communications Strategist**



# Agenda

- Welcome and Introduction
- Logistics and Instructions
- RCRA Background and EPA Role
- Presentation of EPA Proposed Remedy
- Questions and Answers



# **Welcome and Introduction**

**Elizabeth Olhasso**

Acting Branch Chief,  
EPA Pennsylvania Remediation



# **Logistics and Instructions**

**Kinshasa Brown**


Communications Strategist,  
EPA Region 3



This public meeting is being recorded.

 Show device settings


 Show meeting details

 Enter full screen

 Keypad

 Start recording

Your microphone

 Turn off incoming video

00:37




## Please read these **GROUND RULES** before we get started

Please mute your microphone  or telephone line and keep your webcam off  when you are not speaking.

If you encounter **technical difficulties** during the webinar, call the conference line to listen in.

**Questions (Q&A)** will be taken after all presentations have concluded.

Questions will be taken in the following order during the **designated Q&A** period:

1. 'Chat' box 
  - Type your question into the Chat area.
2. Identified speakers in 'Chat' box
  - If you prefer to speak, indicate in the 'Chat' box.
3. Telephone participants
  - For telephone participants, use \* 6 to unmute your telephone line during **designated Q&A** – one person at a time, please.

**Please note that any repeated disruptions during the meeting or Q&A may have to be removed from the Teams Meeting.**



# **RCRA Background and EPA Role**

**Alizabeth Olhasso**

Acting Branch Chief,  
EPA Pennsylvania Remediation



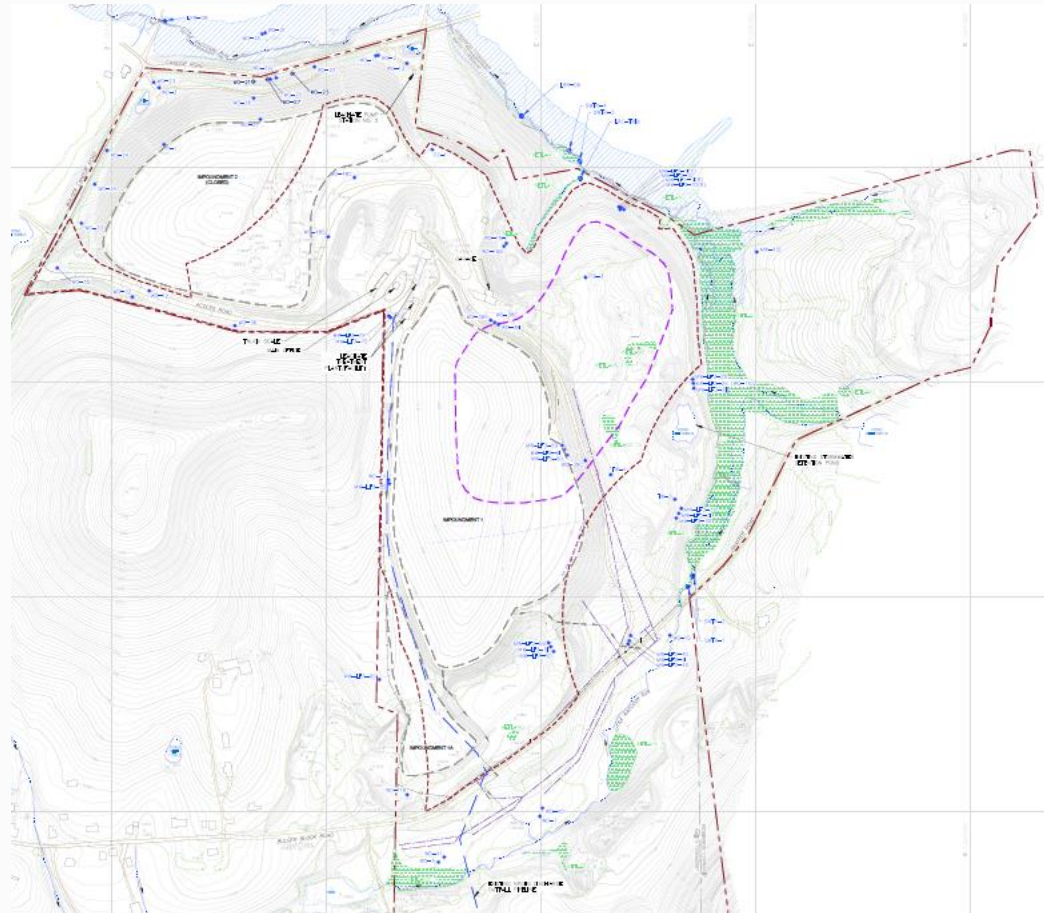
# **Presentation of EPA Proposed Remedy**

**CDR Griff Miller**  
Remedial Project Manager,  
EPA Region 3



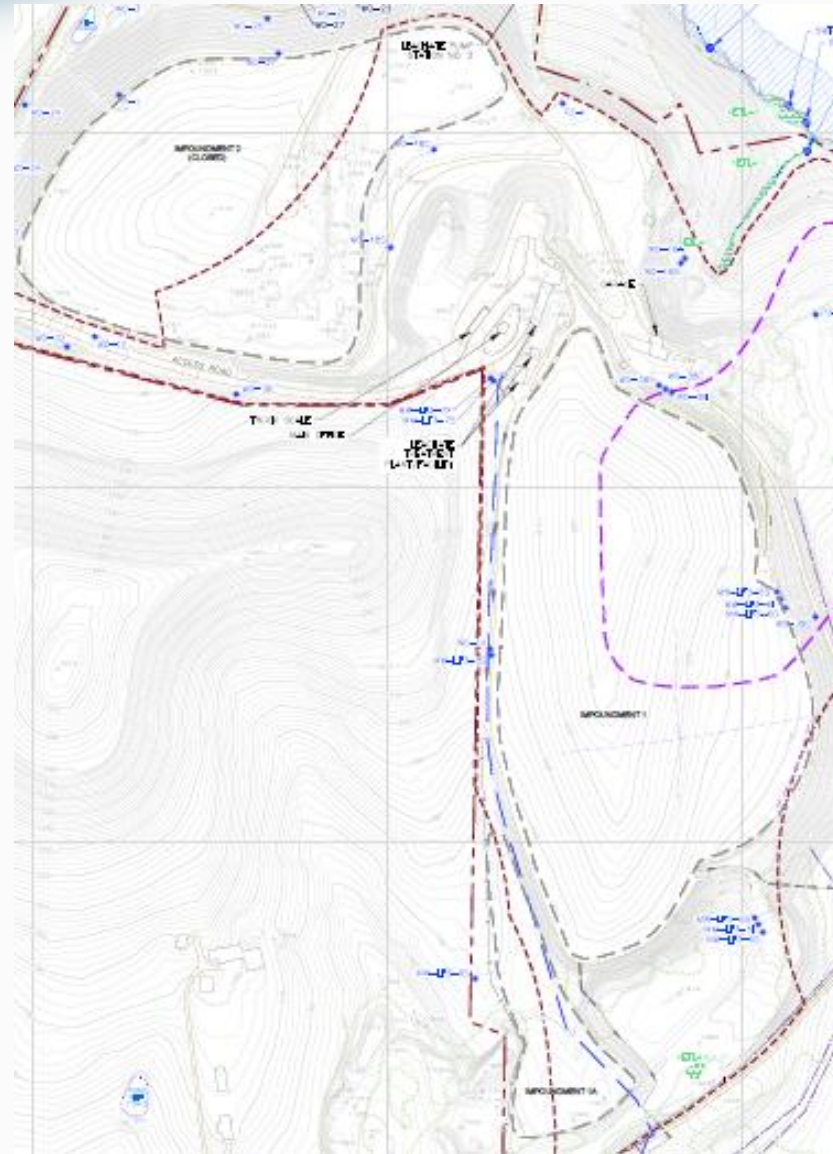
# Facility History and Background

- Began TSD operations in 1958
  - Received inorganic wastes, sludges, dusts, debris from iron/steel and metal finishing/manufacturing
  - Disposal operations ceased in 1987
  - Since 1990s receives primarily solids including slag, metal-impacted soils, and drill cuttings from oil & gas industry
  - Due to subsidence of original caps, some of treated residual wastes have been beneficially reused in impoundments as fill material to raise caps to appropriate grade
- Disposal areas
  - Impoundment 1: active 1958-79; closed w/waste in place in late 1970s, reclosure completed 2021
  - Impoundment 1A: active 1958-81; closed w/waste in place in early 1980s, reclosure expected complete by 2022
  - Impoundment 2: active 1981-88; closed w/waste in place in early 1990s, reclosure completed 2008
  - Landfill 3: proposed (under PADEP review)



# Soil

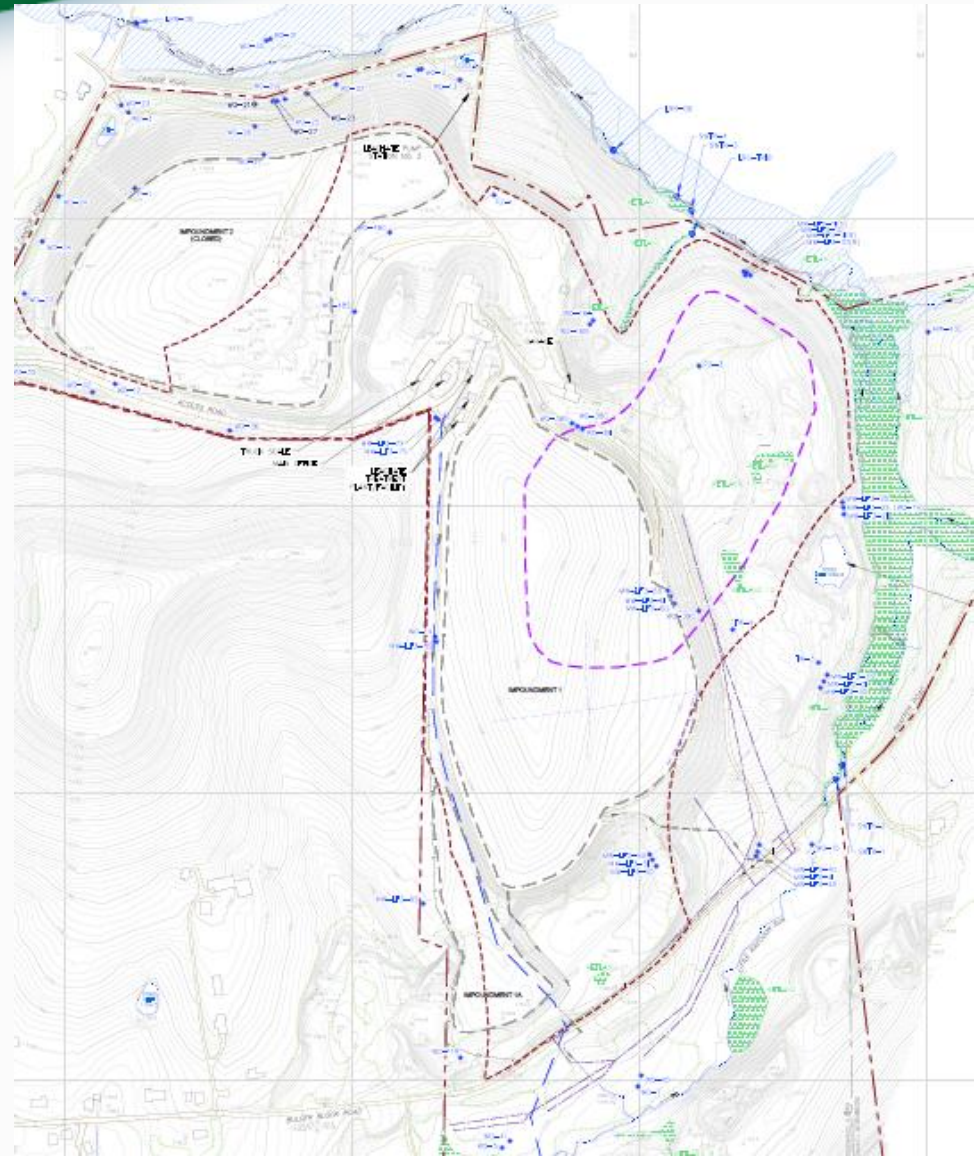
- Waste/soil disposed in impoundments
- Facility workers, construction workers, and trespassers potentially exposed to waste/soil
- Eliminated pathway by capping impoundments
  - Impoundment 1A reclosure expected complete next year





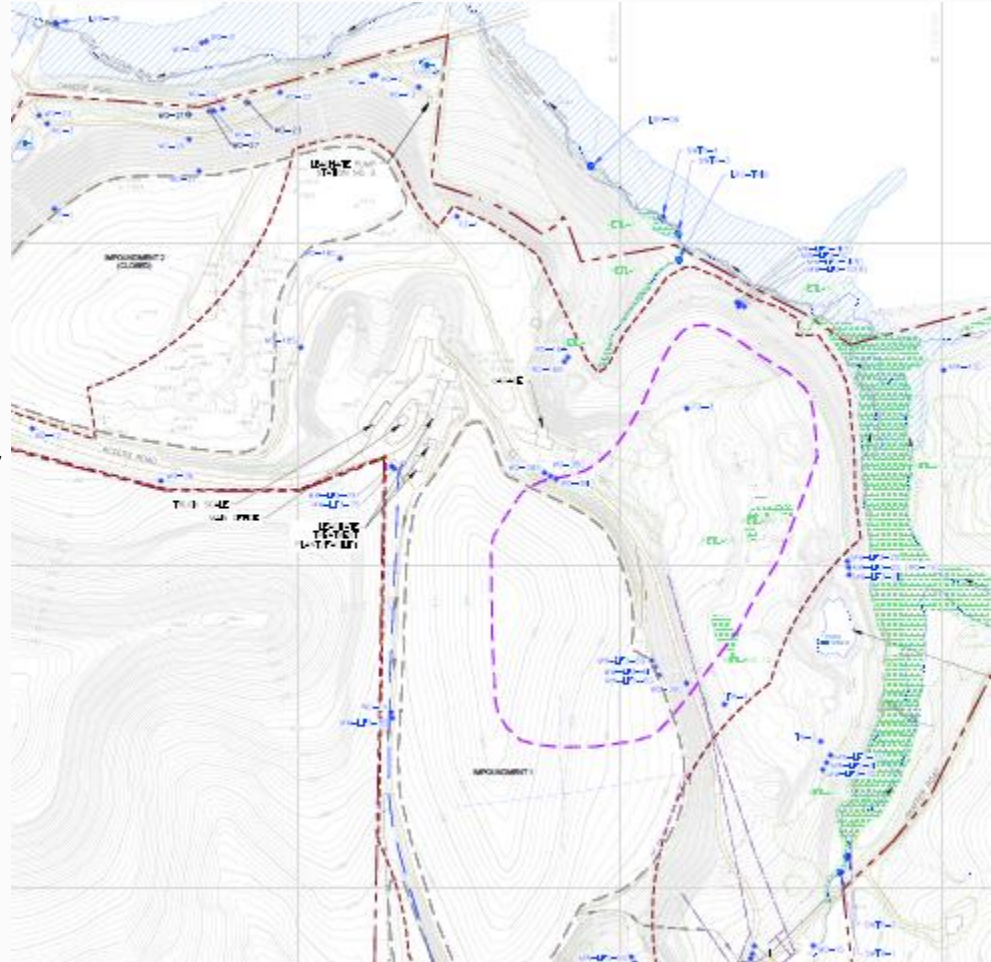
# Groundwater

- Three zones (shallow: Pittsburgh Limestone; intermediate/deep: Connelsville Sandstone/Clarksburg Member; deep: Morgantown Sandstone), which all flow radially to SE, E, and NE
  - Exceedances of metals and nitrate, primarily downgradient of Impoundments 1/1A
  - Leachate collection and groundwater pump-and-treat systems continue to improve groundwater quality downgradient of Impoundment 2
  - Groundwater sampling from two residences N of facility show no impact from facility
- Construction workers potentially exposed to shallow groundwater
- Results: low risk to potential receptors from exceedances in groundwater



# Surface Water

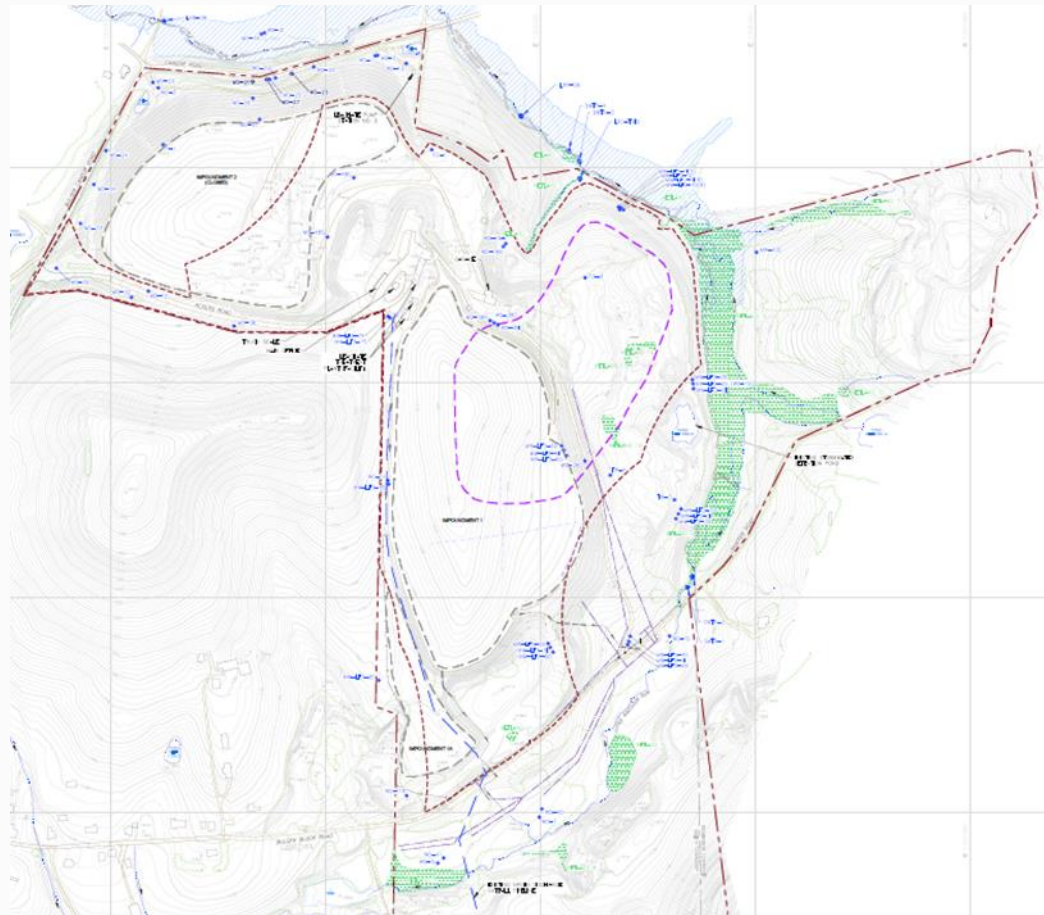
- Eight outfalls covered by NPDES permit
  - No effluent violations since 2019 but sporadic violations in past
- Five surface water monitoring locations
  - Minor exceedances of PA Surface Water Quality Criteria for chloride and manganese
- Recreators, trespassers and ecological organisms potentially exposed to surface water and sediment
- Low risk to potential receptors due to occasional minor exceedances





# EPA's Proposed Remedy

- Soil
  - Complete installation of RCRA cap of Impoundments 1 and 1A
  - Operate and maintain caps on Impoundments 1, 1A, and 2
  - Restriction on residential use of property
- Groundwater
  - Operate and maintain groundwater pump-and-treat and leachate collection systems
  - Monitored natural attenuation outside treatment system's zone of influence
  - Restriction on potable groundwater use
- Surface Water
  - Continued monitoring until Surface Water Quality Criteria met





# Questions/Discussion

Reminder: Public comment period ends  
Thursday, October 14, 2021

Contact Information:

CDR Griff Miller

215-814-3407

[miller.griff@epa.gov](mailto:miller.griff@epa.gov)