

## APPENDIX A:

### How to Find and Use EJSCREEN Data in your Request for RLF Supplemental Funding

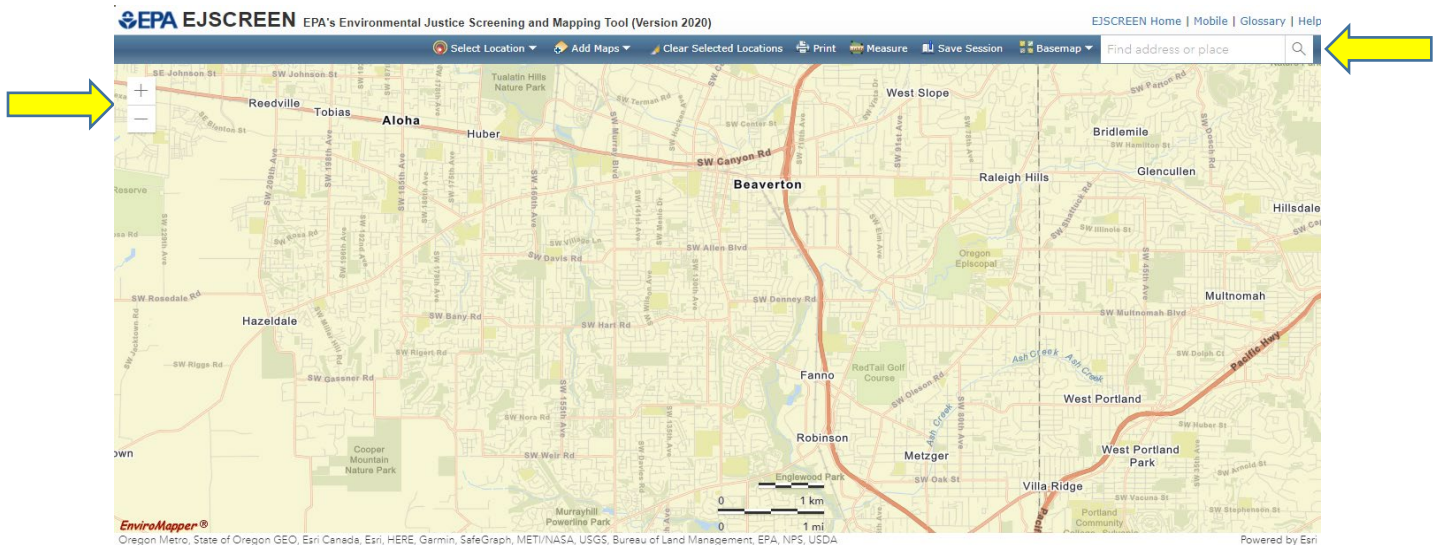
EPA's [EJSCREEN](#) is an environmental justice mapping and screening tool that provides EPA with a nationally consistent dataset and approach for combining environmental and demographic indicators. EJSCREEN users choose a geographic area; the tool then provides demographic and environmental information for that area. All of the EJSCREEN indicators are publicly available data. EJSCREEN provides a way to display this information and includes a method for combining environmental and demographic indicators into EJ indexes.

The information below explains how CARs can access reports for a geographic location or area using EJSCREEN. A brief video demonstration that walks through these steps is also available on [EPA's Brownfields Program website](#). Visit <https://www.epa.gov/ejscreen> to access EPA's EJSCREEN Tool and for additional information on EJSCREEN, general guidance on how to use the tool, understanding results, technical information, and more resources.

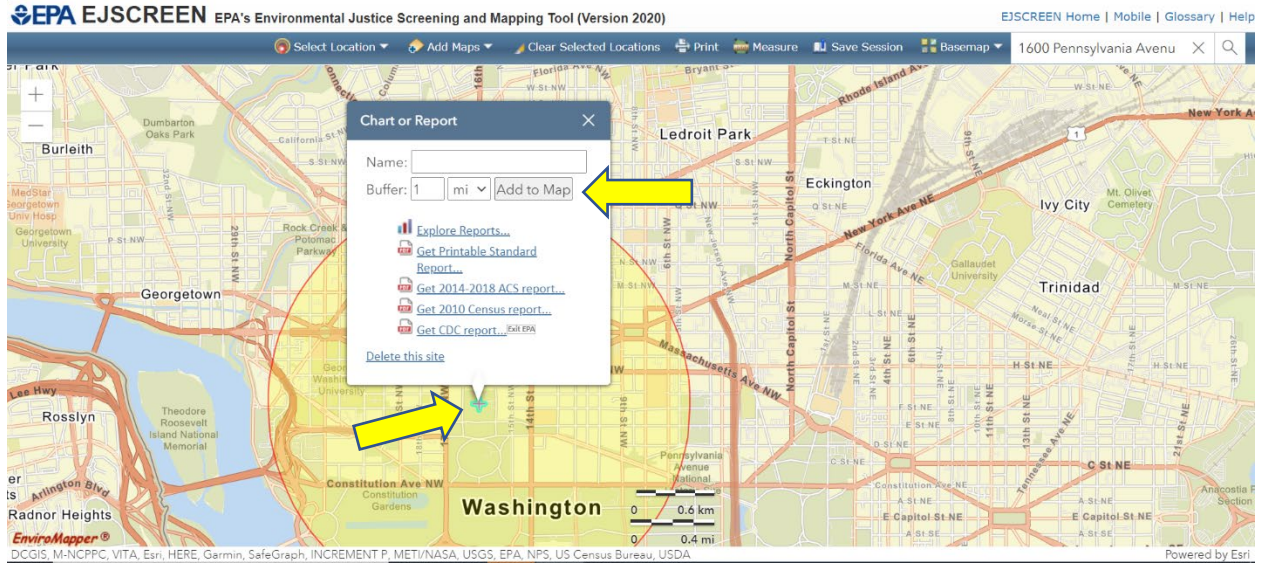
CARs can also contact their EPA [Technical Assistance to Brownfields Communities \(TAB\) Provider](#) for guidance on using EJSCREEN. Some TAB Providers are conducting additional EJSCREEN trainings. For example, see Kansas State University's (KSU) recent training materials on EJ [here](#).

#### Instructions:

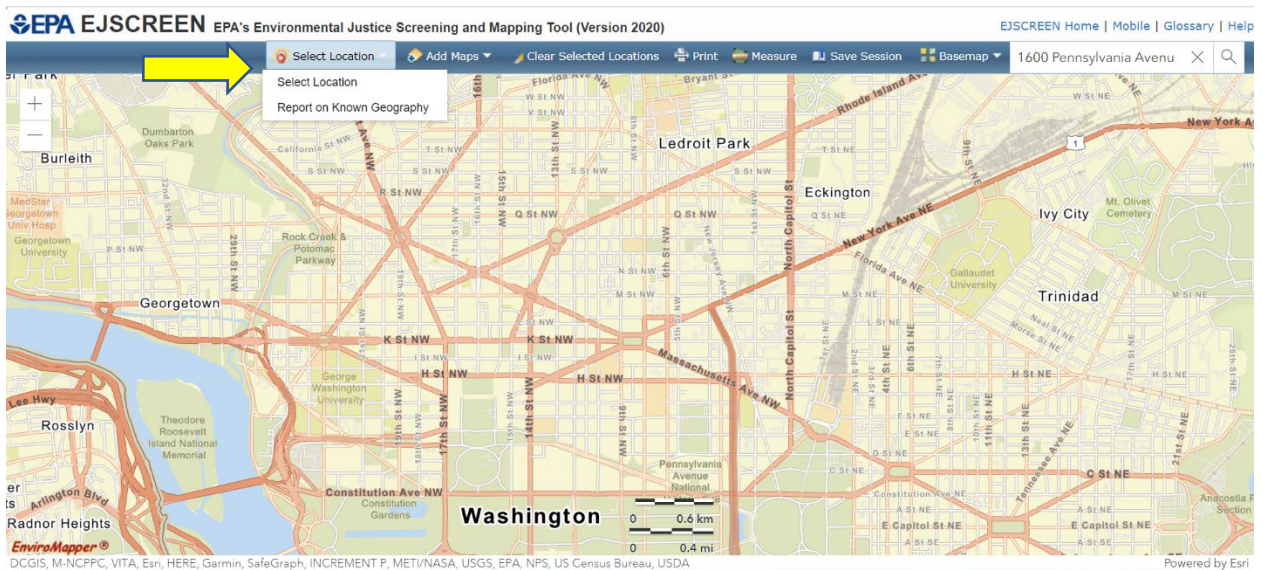
1. Use the search bar at the top right to find an address or place on the map. Use the plus (+) symbol in the top left to zoom in, or the minus (-) symbol to zoom out.



2. If you have an address for a proposed priority site, you can click on the plus (+) symbol that appears on the map and add an area buffer.

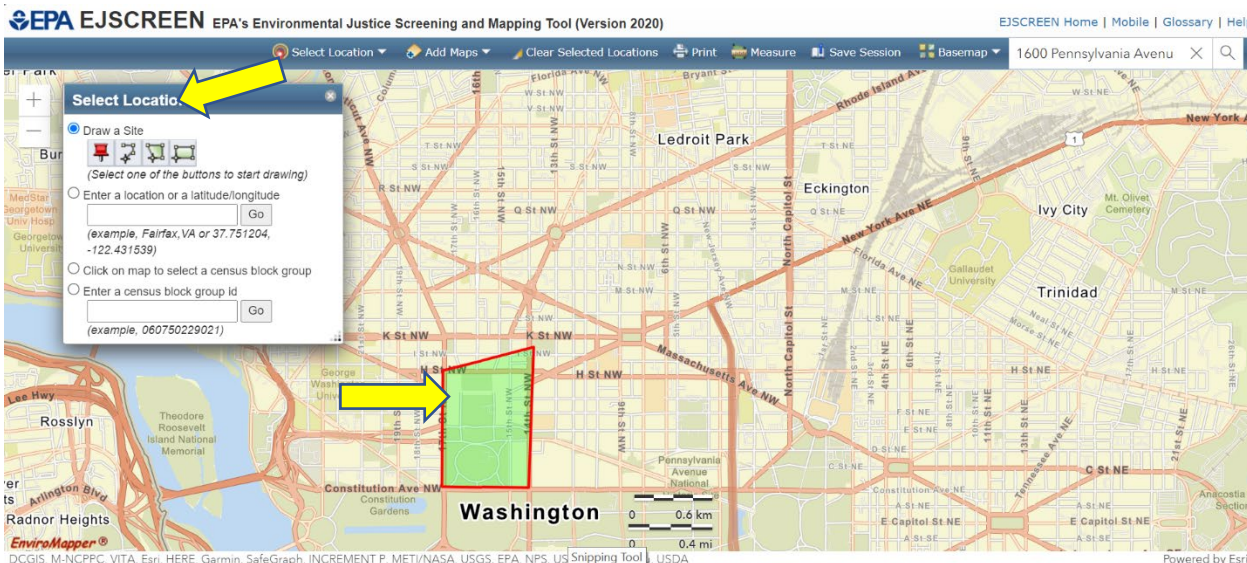


3. Another way to select an area is to click "Select Location" and then "Select Location" from the dropdown menu to draw your own area on the map. You can also select "Report on Known Geography" from the dropdown menu to select an area based on census block group(s), census tract(s), city(ies), or county(ies).

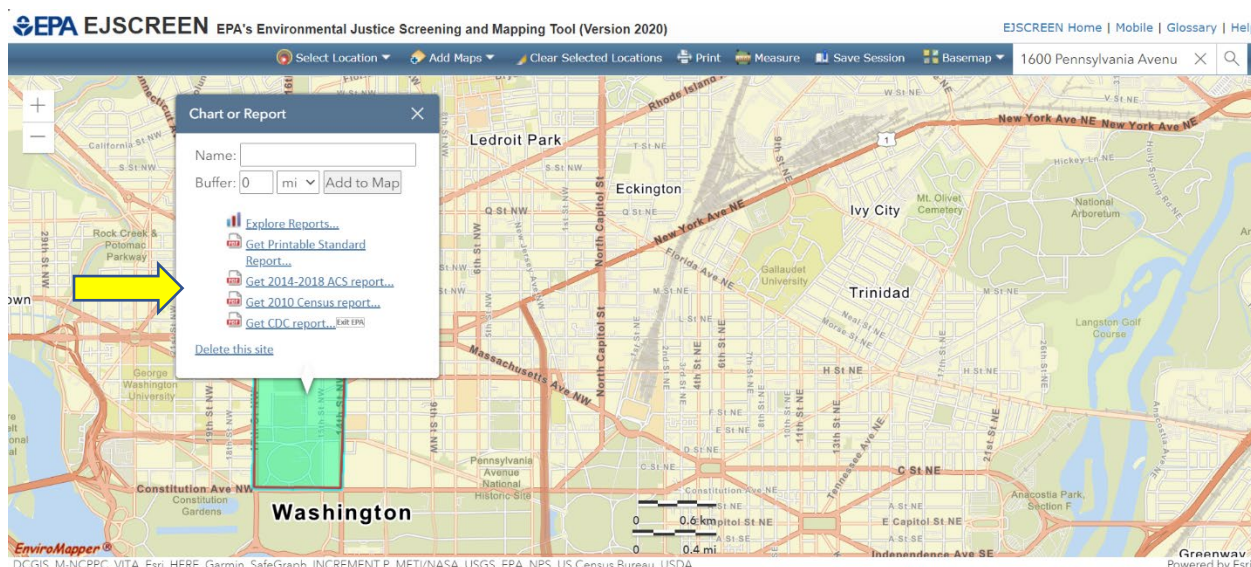




4. Draw an area by selecting the polygon shape and clicking on the map to encompass the desired area.



5. Click on the area, and in the pop-up select “Get Printable Standard Report...” for a summary of the EJ Indices, Environmental Indicators, and Demographic Indicators for your area. You can also click on “Get 2014-2018 ACS report...”, “Get 2010 Census report...”, and “Get CDC report...” for more statistics based on your selected area.



6. Include any information from these reports that may help characterize and describe the communities with EJ challenges where your sites are located.

Save as PDF



**EJSCREEN Report (Version 2020)**  
 the User Specified Area  
**DISTRICT OF COLUMBIA, EPA Region 3**  
 Approximate Population: 203  
 Input Area (sq. miles): 0.25

Selected Variables	Percentile in State	Percentile in EPA Region	Percentile in USA
<b>EJ Indexes</b>			
EJ Index for Particulate Matter (PM 2.5)	24	48	38
EJ Index for Ozone	24	50	39
EJ Index for NATA* Diesel PM	20	10	8
EJ Index for NATA* Air Toxics Cancer Risk	23	38	30
EJ Index for NATA* Respiratory Hazard Index	22	32	26
EJ Index for Traffic Proximity and Volume	4	0	0
EJ Index for Lead Paint Indicator	28	37	23
EJ Index for Superfund Proximity	16	22	15
EJ Index for RMP Proximity	16	23	20
EJ Index for Hazardous Waste Proximity	10	0	0
EJ Index for Wastewater Discharge Indicator	26	37	27

EJ Index for the Selected Area Compared to All People's Blockgroups in the State/Region/US

100

---

75

---