







EPA National Environmental Justice Community Engagement Call

March 15, 2022

1

Housekeeping

-  Please join by phone or computer, not both
-  You are on mute, please enter questions and comments into the Q&A pod
-  If selected to speak during dialogue, please limit comment to 1 minute
-  Recording and transcript will be available online in the near future

2

En Español

Tenemos interpretación en español disponible para aquellos que prefieren escuchar en español.

- Cómo cambiar el canal de audio en español
- Las personas pueden agregar preguntas en español al módulo de preguntas y respuestas
- Los materiales de la reunión estarán disponibles en español.



Spanish-language interpretation is available for those who prefer to listen in Spanish.

- How to switch to Spanish language audio channel*
- Individuals can add questions in Spanish to the Q&A Pod*
- Meeting materials will be made available in Spanish.*

3

Agenda

**Welcome
Mindfulness Moment**

EPA Leadership Updates

TRI National Analysis Report: Highlighting updates to TRI data

Air Toxics Screening Assessment (AirToxScreen): Introducing EPA's latest tool to assess risks to the public from air toxics

Engagement Session and Dialogue

Upcoming Engagement Opportunities

Closing Remarks

4



5


Leadership Updates

Matthew Tejada
DIRECTOR, EPA OFFICE OF ENVIRONMENTAL JUSTICE

ROBIN MORRIS-COLLIN
EPA SENIOR ADVISOR TO THE ADMINISTRATOR FOR ENVIRONMENTAL JUSTICE

The slide has a dark teal background with a large, semi-transparent circular graphic on the right side. The text is white and positioned in the lower half of the slide.

6



2020 Toxics Release Inventory National Analysis

Overview for National Environmental Justice Community Engagement Call

Caitlin S. Briere
Data Analysis and Dissemination Branch - Office of Pollution Prevention and Toxics

7

Overview

- ▶ Introduction to TRI
- ▶ Reporting Year 2020 TRI National Analysis
- ▶ Updated web-based report
- ▶ Custom data visualization
- ▶ Questions & Discussion

U.S. Environmental Protection Agency

8

8

Why was the Toxics Release Inventory Created?



Bhopal memorial for those killed and disabled by the 1984 toxic gas release

U.S. Environmental Protection Agency

Bhopal, India December 1984

- ▶ Methyl isocyanate gas released at a Union Carbide chemical plant
- ▶ Thousands died the first night
- ▶ Thousands more have died due to long-term health effects
- ▶ Survivors continue to suffer with permanent disabilities

Institute, West Virginia August 1985

- ▶ Chemical release at a similar facility in the U.S.
- ▶ Over 100 people hospitalized

Increased concern in the U.S. about chemical accident preparedness and availability of information on toxic chemical releases from industrial facilities

9

What is the Toxics Release Inventory (TRI)?

- ▶ TRI tracks the management of certain toxic chemicals that may pose a threat to human health and the environment.
- ▶ TRI includes information on:



Releases



Waste transfers



Recycling



Pollution prevention

And much more!

U.S. Environmental Protection Agency

10

10

What is a “release”?

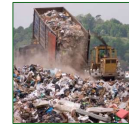
- ▶ A “release” refers to different ways that toxic chemicals from industrial facilities enter the:



Air



Water



Land

- ▶ The likelihood of residents coming into contact with toxic chemicals depends on the type of release and other factors

For more information, see “Factors to Consider when Using TRI Data” at <https://www.epa.gov/toxics-release-inventory-tri-program/factors-consider-when-using-toxics-release-inventory-data>

U.S. Environmental Protection Agency

11

11

Which facilities must report to TRI?

1. Facility must be in a TRI-covered industry sector or category, including:



Manufacturing

Coal/Oil
electricity
generationCertain Mining
FacilitiesHazardous
Waste
Management

Federal Facilities

2. Facility must have the equivalent of at least 10 full-time employees
3. Facility must manufacture, process, or otherwise use more than a certain threshold amount of a TRI-listed chemical per year

U.S. Environmental Protection Agency

12

12

Considerations when using TRI data

- ▶ The TRI Program covers many - but not all - industry sectors and chemicals
- ▶ The quantities of TRI chemical releases reported by facilities are not necessarily an indicator of potential human health risks posed by the chemicals
- ▶ Most TRI data reflect permitted industrial releases
- ▶ TRI data do not reflect all uses of a particular chemical
- ▶ TRI-reported releases may or may not be the largest source of chemical emissions in a particular location
- ▶ TRI reporting requirements, covered chemicals, and covered industry sectors have changed over time
- ▶ New TRI data are published each July and updated several times during the year
- ▶ TRI is one of many sources of environmental data collected by EPA
- ▶ In some rare instances, a facility may not be physically located in the city listed on its TRI reporting form

For more information, see “Factors to Consider when Using TRI Data” at <https://www.epa.gov/toxics-release-inventory-tri-program/factors-consider-when-using-toxics-release-inventory-data>

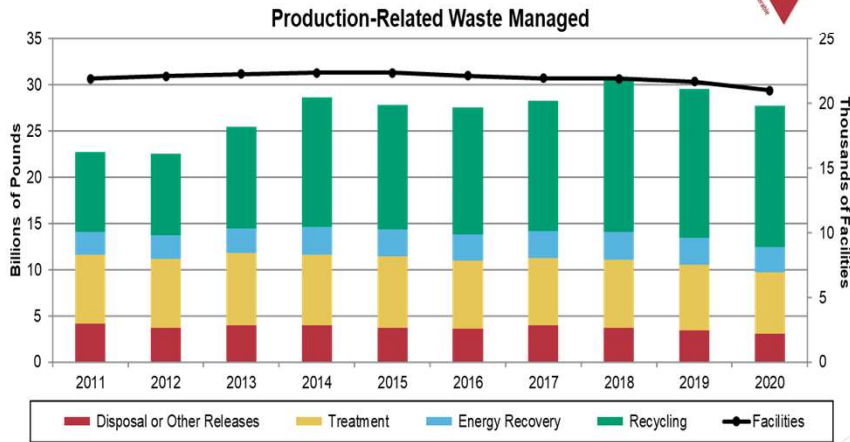
13

Key messages for the 2020 TRI National Analysis

- ▶ Facilities reduced their TRI waste managed and releases since last year
 - ▶ Waste managed decreased 7%; releases decreased 10%
 - ▶ Reductions in releases outpaced reduced economic activity: manufacturing value added decreased 2% while manufacturing releases decreased 9% from 2019 to 2020
 - ▶ TRI facilities implemented 2,779 new source reduction/pollution prevention activities in 2020
- ▶ Releases of TRI chemicals to air continue to decline
 - ▶ 2019-2020: Air releases decreased by 52 million pounds (9%)
 - ▶ 2011-2020: Air releases decreased by 277 million pounds (34%)
 - ▶ Almost every sector reduced its releases of TRI chemicals to air since 2011
- ▶ New this year:
 - ▶ Cross-border waste transfers added to data visualization dashboard
 - ▶ First year of TRI reporting for certain PFAS
 - ▶ “Community Profiles” layer in interactive mapping tool combines TRI data with demographic information, making it easy to overlay maps of facility locations with maps of overburdened and vulnerable communities

14

Trends in TRI waste managed

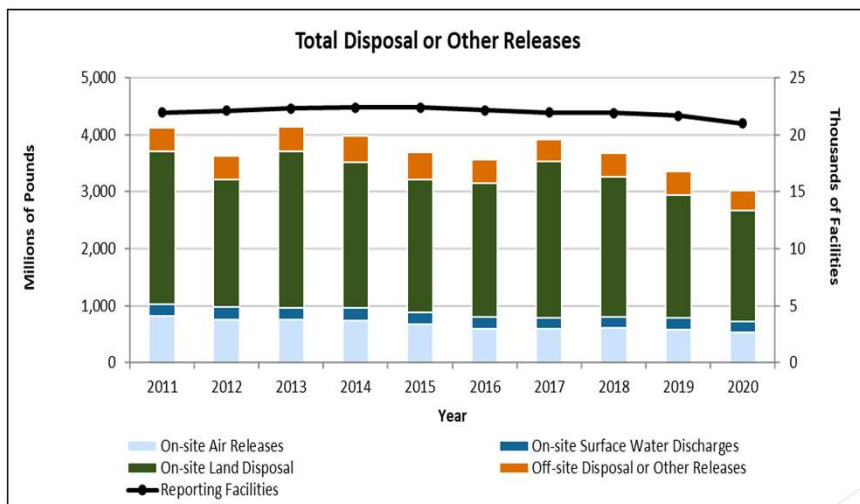


U.S. Environmental Protection Agency

15

15

Trends in TRI releases

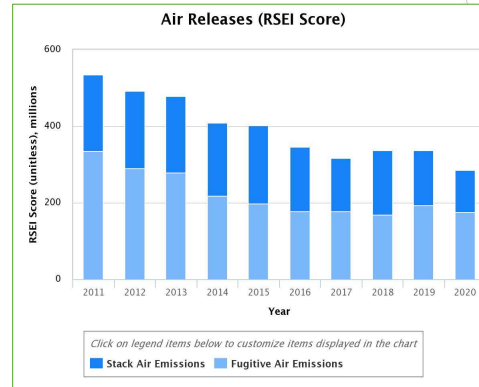
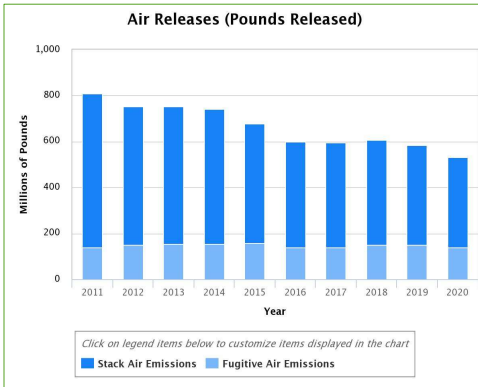


U.S. Environmental Protection Agency

16

16

Trends in TRI releases to air



- ▶ A RSEI Score is an estimate of relative potential human health risk. It is a unitless value that accounts for the magnitude of the release quantity of a chemical, the fate and transport of the chemical throughout the environment, the size and locations of potential exposed populations, and the chemical's inherent toxicity.

U.S. Environmental Protection Agency

17

17

New this year - cross-border transfers

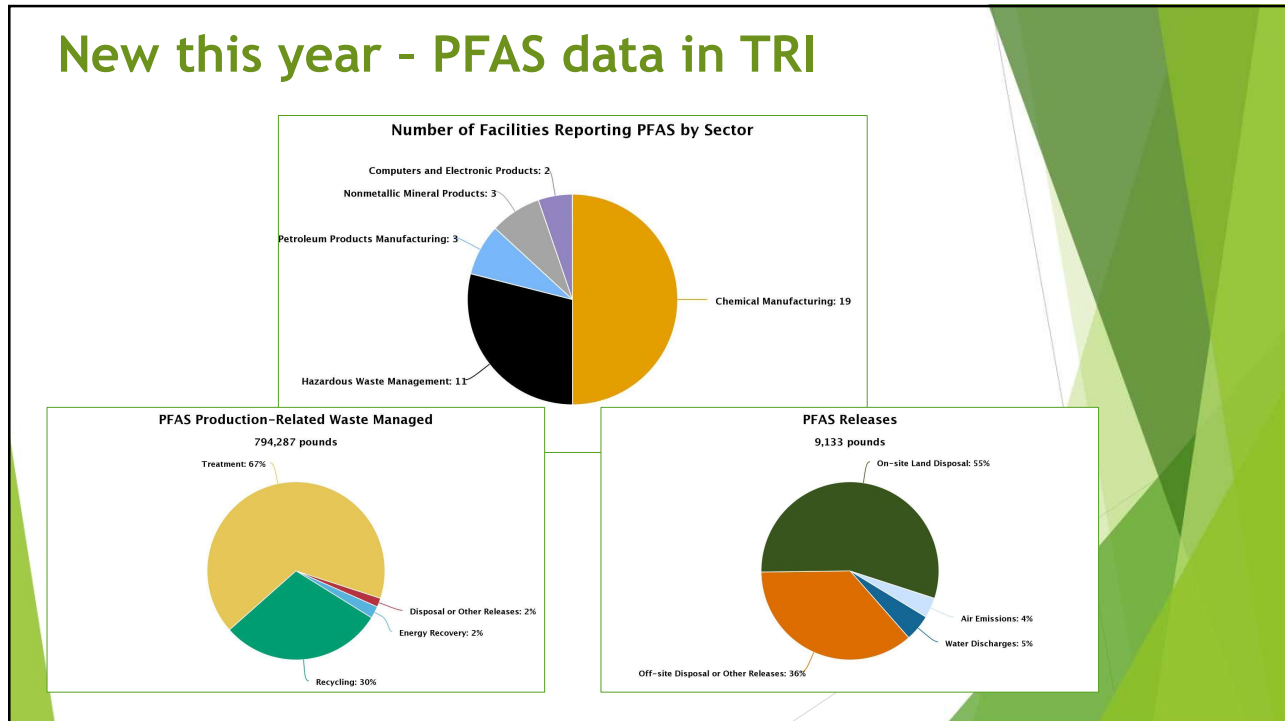
- ▶ New map in the data visualization dashboard shows international waste transfers
- ▶ Select a receiving country to view facilities shipping waste there
- ▶ Color-coded arrows indicate waste management activity and relative quantity



U.S. Environmental Protection Agency

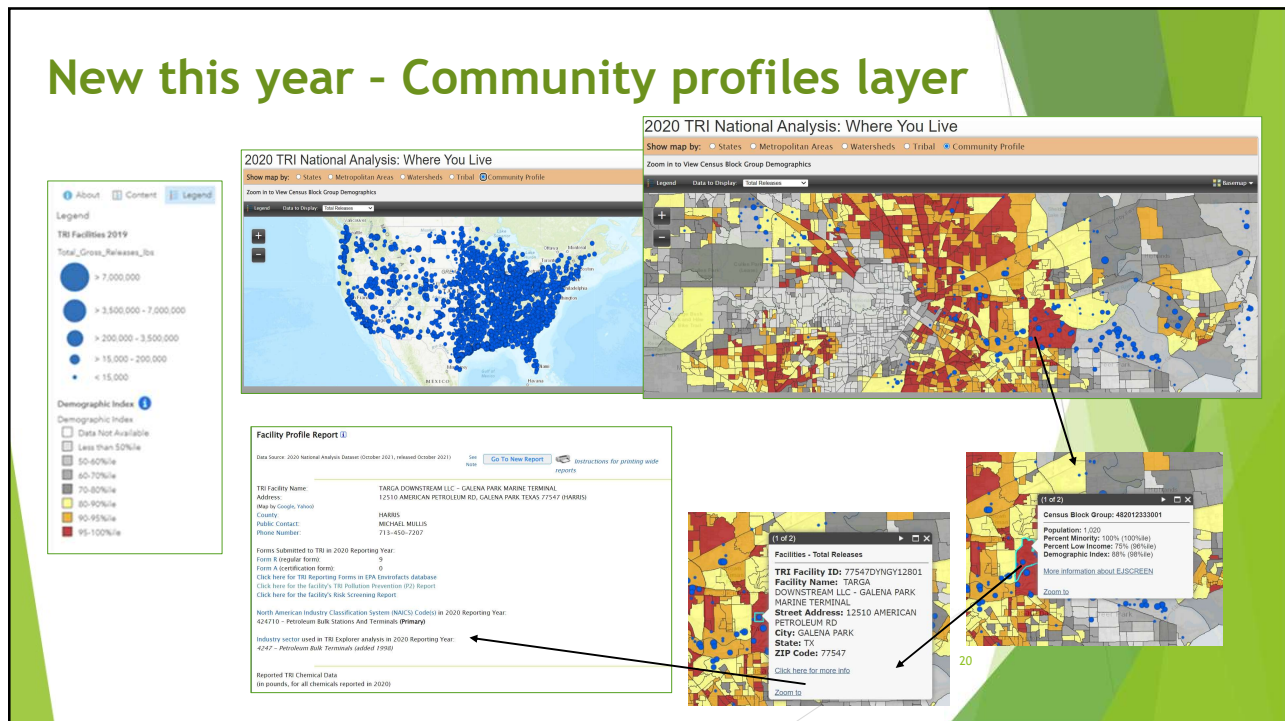
18

New this year - PFAS data in TRI



19

New this year - Community profiles layer




20



TRI National Analysis:
<https://www.epa.gov/trinationalanalysis>

For questions and follow-up: press@epa.gov

21



Overview of EPA's AirToxScreen for emissions year 2017

22

What is AirToxScreen?

- ▶ Screening-level characterization of air toxics across the nation
 - ▶ Nationwide assessment at census **tract** resolution
 - ▶ Based on air quality modeling of emissions
 - ▶ Cancer and noncancer risk estimates for more than 100 air toxics

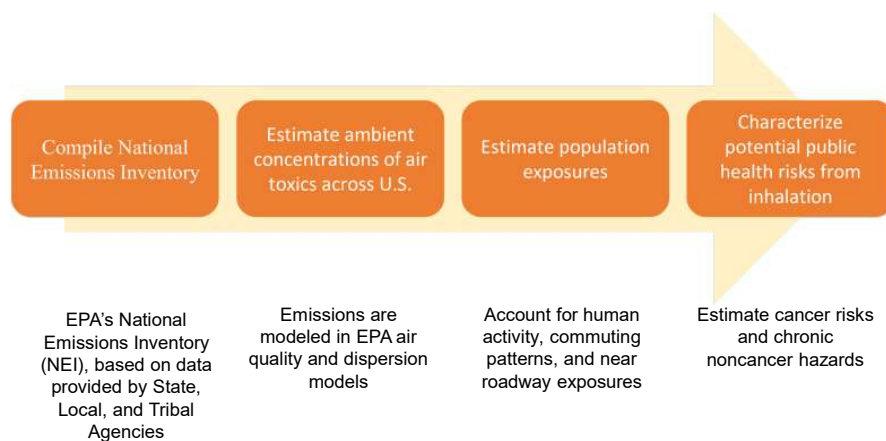
- ▶ How is AirToxScreen used?
 - ▶ Provide communities with information about health risks from air toxics
 - ▶ Planning tool for EPA, State/Local/Tribal Organizations
 - To identify locations of interest for further study
 - To prioritize pollutants and emission sources/types

- ▶ Replacement for the EPA's National Air Toxics Assessment (NATA)

23

23

AirToxScreen Steps

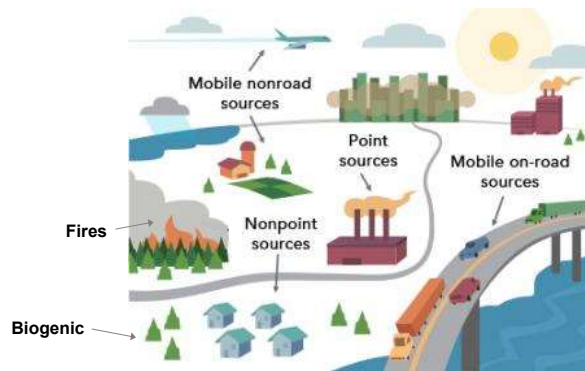


24

24

Sources of Emissions in AirToxScreen

- ▶ Point or stationary sources
- ▶ Nonpoint
- ▶ Mobile
 - ▶ Onroad
 - ▶ Nonroad
- ▶ Fires
- ▶ Biogenic
- ▶ Secondary
- ▶ Background

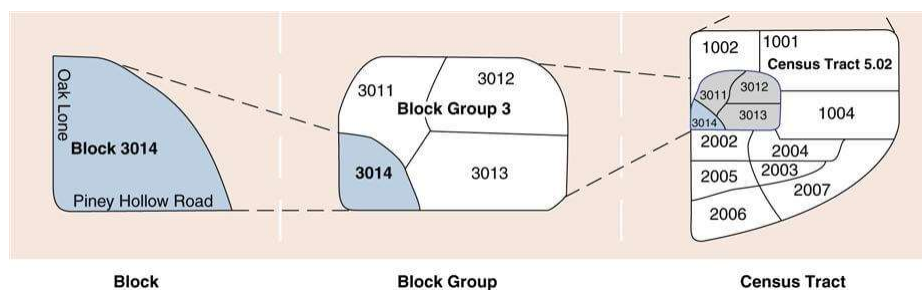


25

25

AirToxScreen Approach

- ▶ Results are provided at the Census Tract level
- ▶ Assume a 70-year lifetime exposure
- ▶ Current results based on 2017



26

26

AirToxScreen Results

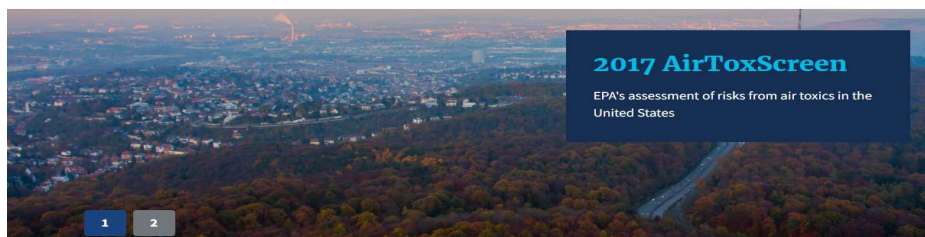
- ▶ Cancer
 - ▶ Combined cancer risk based on exposure to all air toxics from all outdoor sources
 - ▶ Presented as risk “in-1 million”
 - The national average for 2017 is 30-in-1 million
- ▶ Noncancer
 - ▶ Presented as a hazard index (HI)
 - ▶ Target organ specific (14 total)

27

27

Website: www.epa.gov/AirToxScreen

Air Toxics Screening Assessment



The Air Toxics Screening Assessment (AirToxScreen) is EPA's screening tool to provide communities with information about health risks from air toxics. AirToxScreen is part of EPA's [new approach to air toxics](#) that provides updated data and risk analyses on an annual basis, helping state, local and tribal air agencies, EPA, and the public more easily identify existing and emerging air toxics issues.

Learn About AirToxScreen

- [Overview](#)
- [Limitations](#)
- [Glossary of Terms](#)
- [Frequent Questions](#)

AirToxScreen 2017

- [2017 AirToxScreen](#)
- [2017 Assessment Results](#)
- [2017 AirToxScreen Mapping Tool](#)
- [2017 AirToxScreen Methods](#)

Quick Links

- [Previous air toxics assessments](#)
- [Learn about risk assessments](#)
- [Hazardous Air Pollutants website](#)
- [Ethylene Oxide website](#)
- [Urban Air Toxics website](#)
- [Other environmental screening tools](#)

28

28

AirToxScreen Mapping Tool

Air Toxics Screening Assessment

[CONTACT US](#)

- [AirToxScreen Home](#)
- [AirToxScreen Overview](#)
- [AirToxScreen Limitations](#)
- [Glossary of Terms](#)
- [Frequent Questions](#)
- [2017 AirToxScreen](#)
- [2017 AirToxScreen Results](#)
- [2017 AirToxScreen Mapping Tool](#)
- [2017 AirToxScreen Assessment Methods](#)

2017 AirToxScreen Mapping Tool

The AirToxScreen Mapping Tool displays cancer risks, emissions data, and other AirToxScreen data on a map. Users can "zoom" to areas of interest using the map's search tool, select census tracts to see summary level information about risk from air toxics, and view other AirToxScreen data and results.



The current version of the AirToxScreen Mapping Tool includes the following data layers:

- total cancer risks for each U.S. census tract
- cancer risks by pollutant and source
- emissions data for point-source sector emissions modeled in AirToxScreen
- air toxics monitoring sites with monitoring data

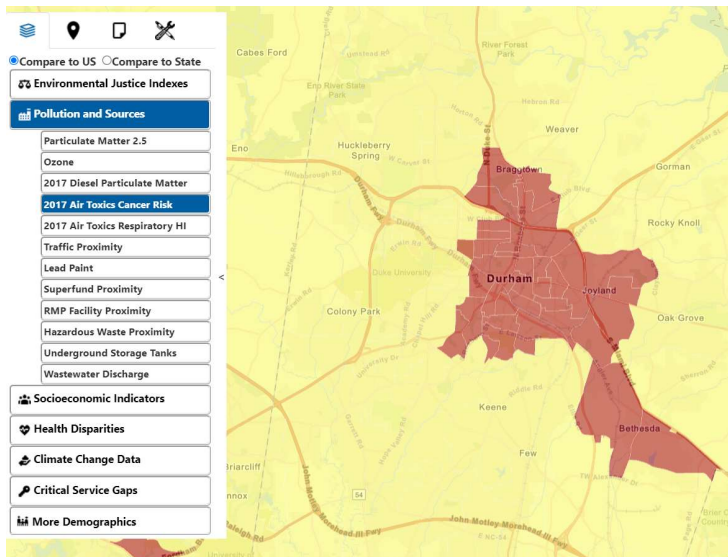
Upcoming updates to the Tool will include

- emissions data for all emission sources modeled in AirToxScreen
- chronic noncancer hazard indexes
- modeled ambient concentrations (tract-level)

You can use the AirToxScreen Mapping Tool on a computer or mobile device.

Please Note: EPA has posted information on this site as a convenience to the site's users. Although EPA has made every effort to ensure the accuracy of the information posted on this site, users of this site should not rely on information relating to environmental laws and regulations posted on this site. Portal users are solely responsible for ensuring that they are in compliance with all relevant environmental laws and regulations. In addition, EPA cannot attest to the accuracy of data provided by organizations outside of the federal government. By

AirToxScreen Results in EJScreen



Map Contents

- Pollution and Sources**
- 2017 Air Toxics Cancer Risk (National Percentiles)
- 95 - 100 percentile
- 90 - 95 percentile
- 80 - 90 percentile
- 70 - 80 percentile
- 60 - 70 percentile
- 50 - 60 percentile
- Less than 50 percentile
- Data not available

AIRTOXSCREEN MAPPING TOOL

31

OVERVIEW

- Purpose
- Phased Release Approach
- Current Tool's Functionality
- Mapping Tool

32

32

PURPOSE

OAQPS developed a tool to provide easy access to summary-level information to understand risk in a given area.

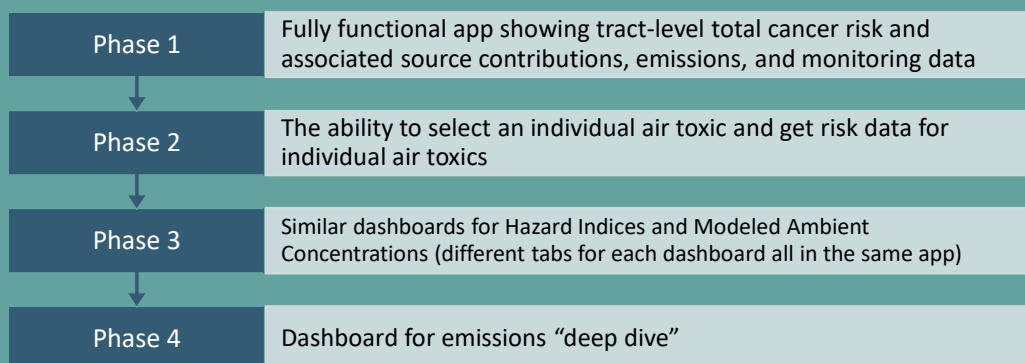
The tool equips users to answer the following questions:

- 1) What is the risk from air toxics in my area?
- 2) What pollutants drive those risks?
- 3) Where do those emissions come from?

33

33

PHASED RELEASE APPROACH

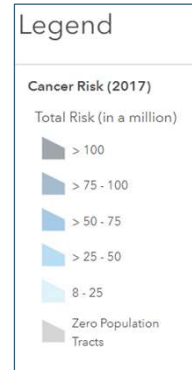


34

34

CURRENT FUNCTIONALITY

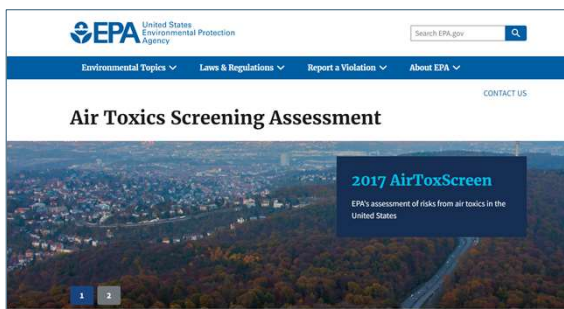
- Map total risk at tract level
- Map point sources and monitors
- Filter tracts by risk level and location
- View source type contribution to risk for selected tracts
- View pollutant contribution to risk for selected tracts
- View tracts and point sources where emissions have gone down since 2017



35

35

MAPPING TOOL:



<https://www.epa.gov/AirToxScreen>



<https://www.epa.gov/AirToxScreen/2017-airtoxscreen-mapping-tool>

36

36

AirToxScreen Mapping Tool (based on 2017 emissions)

Zoom to State(s): None Zoom to County(s): None Select Minimum Risk to Include: No number selected Select Only Tracts With Changes: None

To get started:

- Select tract(s) on map using selector tool in upper left corner of map. When tract(s) are selected, associated lists and charts will appear under the map.
- Zoom to a specific area using the search tool in the upper right of map by typing in a place name or by using the State and County selector tools above the map.
- Filter tracts by risk level

Legend

Cancer Risk (2017)

Total Risk (in a million)

- > 100 - 2,000
- > 75 - 100
- > 50 - 75
- > 25 - 50
- 0 - 25
- Zero Population Tracts

Tract Location Data
Selection required on one or more elements

Risk by Air Toxic
Selection required on one or more elements

Risk by Source Type
Selection required on one or more elements

Facility Emissions (2017 tons)
Selection required on one or more elements

Location Source Air Toxic

<https://epa.maps.arcgis.com/apps/dashboards/fb6e6b70c7e2480c8ef88cc8e9c061ac>

37

37

Listening Session & Dialogue

WRITE	RAISE	LIMIT
WRITE ANY COMMENTS/QUESTIONS IN THE Q&A POD	WHEN PROMPTED, RAISE YOUR HAND TO ASK A QUESTION OR PROVIDE INPUT <ul style="list-style-type: none"> USING A PHONE? PRESS *9 TO RAISE YOUR HAND 	PLEASE LIMIT QUESTIONS OR COMMENTS TO 1 MINUTE

38

Upcoming Engagement and Training Opportunities

39

White House Environmental Justice Advisory Council (WHEJAC) Public Meeting

- **March 30-31, 2022** (approximately 3:00 pm to 7:30 pm Eastern): This free meeting is open to all members of the public. Members of the public are encouraged to provide comments relevant to the beta version of the Climate and Economic Justice Screening Tool that was developed by the CEQ and federal government agencies implementation of the Justice40 Initiative.
- **Registration is required:** https://usepa.zoomgov.com/webinar/register/WN_wCwVP1dtT0auAR5kfucVtw. When registering, you will also have an opportunity to sign up to provide brief **verbal comments** during a meeting. Translations and disability access support can be requested during meeting registration as well. Registration to speak during the public comment period closes at 11:59 p.m. (ET), March 23, 2022.
- To learn more about the WHEJAC and the public meeting, please visit: <https://www.epa.gov/environmentaljustice/white-house-environmental-justice-advisory-council>

40

EPA Environmental Justice Webinar Series for Tribes and Indigenous Peoples

For questions about these webinars, or the EPA EJ Webinar Series for Tribes and Indigenous Peoples, please contact Danny Gogal (gogal.danny@epa.gov).

Advancing Considerations of Traditional Knowledge into Federal Decision Making

Date & Time: March 23, 2022
11:30 am-1:00 pm PT / 2:30 pm-4:00 pm
ET

Register Here:

https://usepa.zoomgov.com/webinar/register/WN_Pr8NnTJOQhSwWHAf74glmA

EJ Small Grants to Support Tribal Environmental Public Participation Processes & Other EPA EJ Financial Assistance Programs Available to Tribes & Indigenous Peoples

Date & Time: April 14, 2022
11:30 am-1:00 pm PT / 2:30 pm-4:00 pm ET

Register Here:

https://usepa.zoomgov.com/webinar/register/WN_f-Z4ZYkBQkqRJFBI41KbkQ

41

White House Council on Environmental Quality (CEQ) EJ Survey

The White House CEQ EJ Team is building an email listserv to share news alerts, funding notices, engagement opportunities, webinars, and other informative announcements from the White House and across the Federal government.

If you are interested in being a part of its EJ listserv, please complete this short online survey form by Friday, April 1.

Access the survey:

<https://www.surveymonkey.com/r/whceqej>

DOI Bureau of Ocean Energy Management Public Dialogues on Community Engagement for Offshore Wind

Register to attend a dialogue on the day that is most convenient for you -- the agenda will be the same for all three days.

March 21, 10:30 a.m. to Noon Eastern

https://bsee-gov.zoomgov.com/meeting/register/vJltc-qorDkvGEmOrCCF95raaDXWoFCFs_A

March 22, 10:30 a.m. to Noon Eastern

<https://bsee-gov.zoomgov.com/meeting/register/vJlsc-hrTwiG1kqBTtb5fSrQoZpo5nclmM>

March 24, 10:30 a.m. to Noon Eastern

<https://bsee-gov.zoomgov.com/meeting/register/vJlsdemrqDwjHij-K7aUBO9m-zWxBQBjHl4>

42

Closing

- ❑ **Next National EJ Community Engagement call:**
 - April 19, 2022, at 2 p.m. Eastern
<https://www.epa.gov/environmentaljustice/national-environmental-justice-community-engagement-calls>
- ❑ **Subscribe to EPA's Environmental Justice listserv:**
 - For up-to-date information about EJ funding opportunities, events, and webinars:
 - Send a blank email to: join-epa-ej@lists.epa.gov
- ❑ **Follow us on Twitter:**
 - @EPAEnvJustice
- ❑ **Send follow-up questions or comments to:**
 - Environmental-Justice@epa.gov

