



San Juan Long-Term Monitoring Project

Project Photo Log for the
Animas River

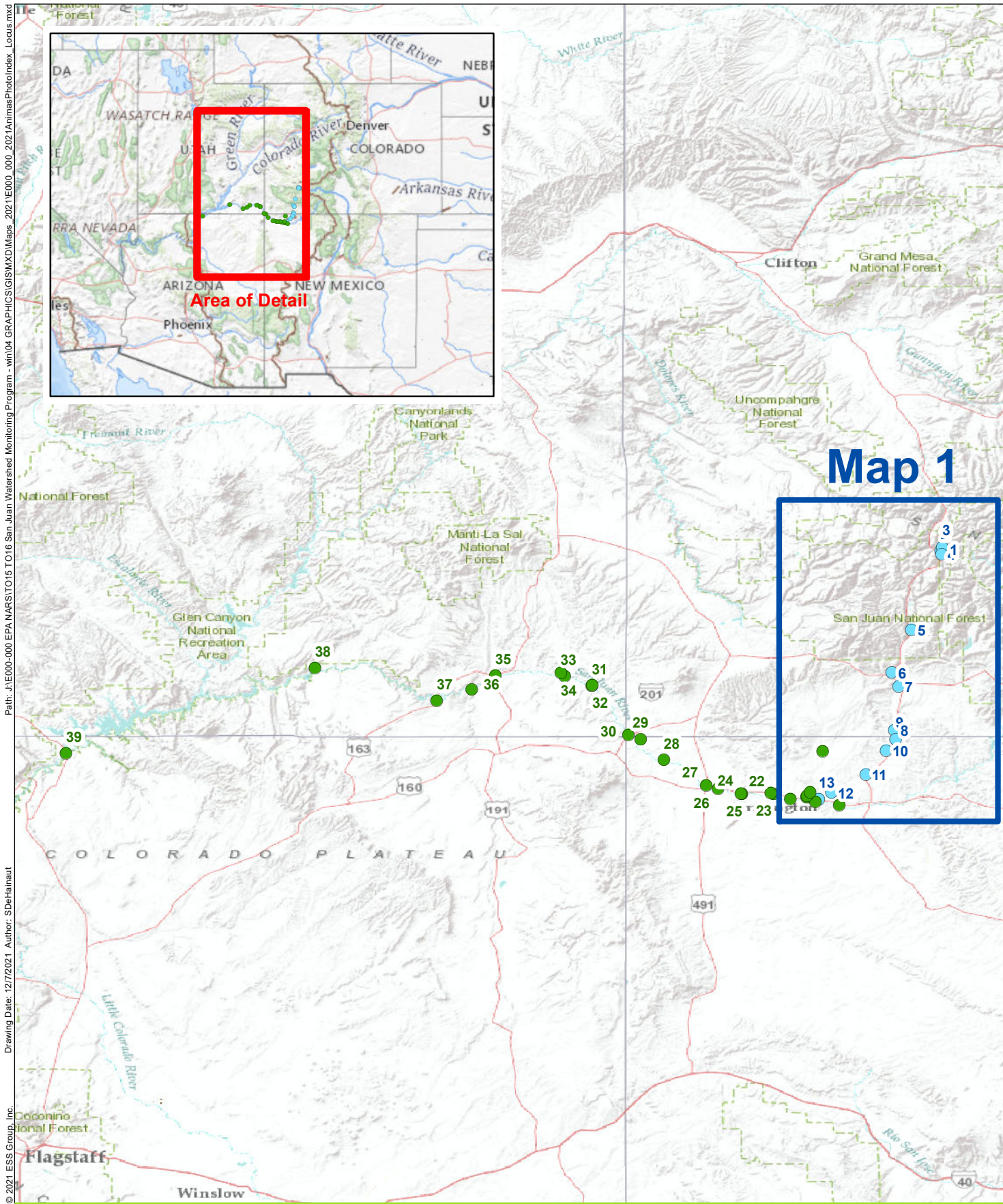




Photo Log Site Index

Site #	Site Name	Site Description	Page #
1	A68	Animas River Above Cement Creek	5
1	A68	Animas River Above Cement Creek (Abnormal Low Flow)	6
2	M34	Mineral Creek	7
2	M34	Mineral Creek (Abnormal Low Flow)	8
3	CC48	Cement Creek at Silverton CO	9
3	CC48	Cement Creek at Silverton CO (Abnormal Low Flow)	10
4	A72	Animas River Below Silverton CO	11
4	A72	Animas River Below Silverton CO (Abnormal Low Flow)	12
5	Bakers Bridge	Animas River at Bakers Bridge	13
5	Bakers Bridge	Animas River at Bakers Bridge (Abnormal Low Flow)	14
6	9423A	Animas River at 9th Street	15
6	9423A	Animas River at 9th Street (Abnormal Low Flow)	16
7	AR 19-3	Animas River at Southern Ute Tribe AR19-3	17
7	AR 19-3	Animas River at Southern Ute Tribe AR19-3 (Abnormal Low Flow)	18
8	AR 1-9		19
8	AR 1-9	(Abnormal Low Flow)	20
9	66Animas055.8	Animas River Below State Line (Estes Arroyo to SUIT Boundary)	21
9	66Animas055.8	Animas River Below State Line (Estes Arroyo to SUIT Boundary) (Abnormal Low Flow)	22
10	ADW-022	Animas River Near Cedar Hill, NM	23
10	ADW-022	Animas River Near Cedar Hill, NM (Abnormal Low Flow)	24
11	66Animas028.1	Animas River Above Estes Arroyo, Near Aztec	25
11	66Animas028.1	Animas River Above Estes Arroyo, Near Aztec (Abnormal Low Flow)	26
12	66Animas009.8	Animas River at CR 5000 Above Farmington	27
12	66Animas009.8	Animas River at CR 5000 Above Farmington (Abnormal Low Flow)	28
13	WIIN-13	Animas River at Boyd Park in Farmington	29
13	WIIN-13	Animas River at Boyd Park in Farmington (Abnormal Low Flow)	30

Click the site in the list above to navigate to that page



Path: J:\E000-000 EPA NARS\TO15 TO16 San Juan Watershed Monitoring Program - win04 GRAPHC\GIS\MXD\Maps_2021\E000_000_2021AnimasPhotoIndex_Locus.mxd
 Drawing Date: 12/7/2021 Author: SDeHainaut
 © 2021 ESS Group, Inc.

San Juan Watershed Long Term Monitoring Project
 Animas and San Juan Rivers with Tributaries
 AZ, CO, NM, UT, Navajo Nation, Ute Mountain
 Ute, and Southern Ute Indian Tribe

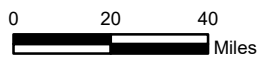
**Sample Locations
 Within the San Juan Watershed
 Locus Map**

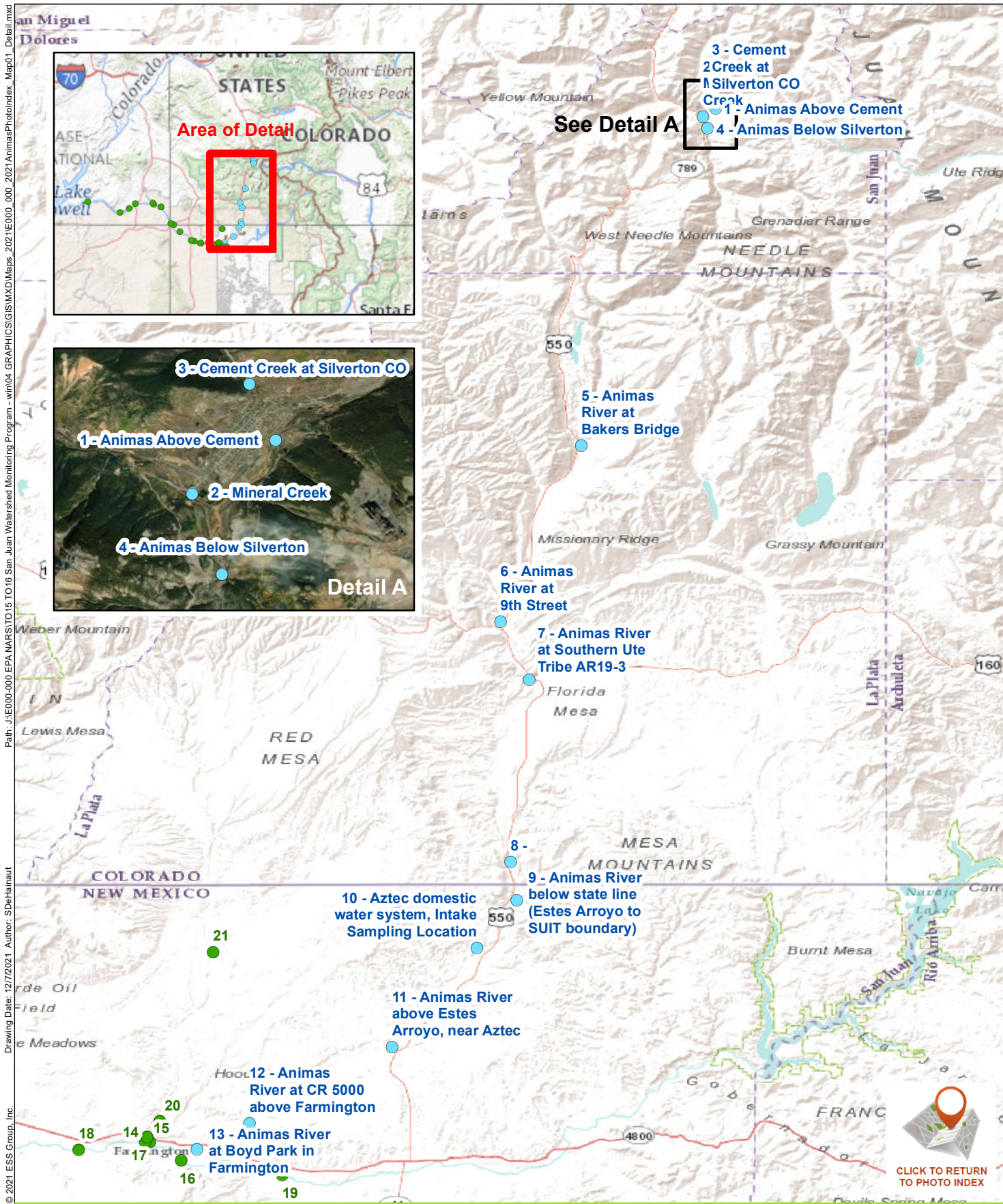
Legend

- Animas River and Tributaries Site
- San Juan River and Tributaries Site

Source:
 ESRI/USGS, National Map, 2021

**INSTRUCTIONS - CLICK MAP BOX
 FOR DETAIL OF THAT AREA**





Path: J:\E000-000 EPA NARS\TO15 TO16 San Juan Watershed Monitoring Program - win04 GRAPHIC\GIS\MXD\Maps_2021\E000_000_2021\AnimasPhotoIndex_Map01_Detail.mxd
 Drawing Date: 12/7/2021 Author: SDeHainaut
 © 2021 ESS Group, Inc.



San Juan Watershed Long Term Monitoring Project

Animas and San Juan Rivers with Tributaries
 AZ, CO, NM, UT, Navajo Nation, Ute Mountain
 Ute, and Southern Ute Indian Tribe

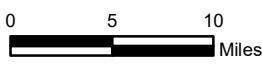
Source:
 ESRI/USGS, National Map, 2021

Legend

- Animas River and Tributaries Site
- San Juan River and Tributaries Site

**Animas River Sample Locations
 Within the San Juan Watershed**

**INSTRUCTIONS - CLICK MAP BOX
 FOR DETAIL OF THAT AREA**





Runoff Flow, Looking Upriver (May 2019)



Base Flow, Looking Upriver (October 2020)



Abnormal Low Flow, Looking Upriver (September 2021)



Base Flow, Looking Upriver (October 2020)



Runoff Flow, Looking Downriver (May 2019)



Base Flow, Looking Downriver (October 2019)



Abnormal Low Flow, Looking Downriver (September 2021)



Base Flow, Looking Downriver (October 2019)



Runoff Flow, Looking Upriver (May 2019)



Base Flow, Looking Upriver (October 2019)



Abnormal Low Flow, Looking Upriver (September 2021)



Base Flow, Looking Upriver (October 2019)



Runoff Flow, Looking Upriver (May 2019)



Base Flow, Looking Upriver (October 2019)



Abnormal Low Flow, Looking Upriver (September 2021)



Base Flow, Looking Upriver (October 2019)



Runoff Flow, Looking Upriver (May 2019)



Base Flow, Looking Upriver (February 2020)



Abnormal Low Flow, Looking Upriver (September 2021)



Base Flow, Looking Upriver (February 2020)



Runoff Flow, Looking Downriver (May 2019)



Base Flow, Looking Downriver (February 2020)



Abnormal Low Flow, Looking Downriver (September 2021)



Base Flow, Looking Downriver (February 2020)



San Juan Watershed Long Term Monitoring Project

Animas and San Juan Rivers with Tributaries
AZ, CO, NM, UT, Navajo Nation, Ute Mountain
Ute, and Southern Ute Indian Tribe



[CLICK TO RETURN TO PHOTO INDEX](#)

**Site 6
9423A
Animas River at 9th Street
(Abnormal Low Flow)**

[Click to View Normal Flow](#)



Runoff Flow, Looking Downriver (May 2019)



Base Flow, Looking Downriver (February 2020)



Abnormal Low Flow, Looking Downriver (September 2021)



Base Flow, Looking Downriver (February 2020)



Runoff Flow, Looking Upriver (May 2019)



Base Flow, Looking Upriver (February 2020)



Abnormal Low Flow, Looking Upriver (September 2021)



Base Flow, Looking Upriver (February 2020)



Runoff Flow, Looking Upriver (May 2019)



Base Flow, Looking Upriver (February 2020)



Abnormal Low Flow, Looking Upriver (September 2021)



Base Flow, Looking Upriver (February 2020)



Runoff Flow, Looking Upriver (May 2019)



Base Flow, Looking Upriver (February 2020)



Abnormal Low Flow, Looking Upriver (September 2021)



Base Flow, Looking Upriver (February 2020)



Runoff Flow, Looking Downriver (May 2019)



Base Flow, Looking Downriver (February 2020)



Abnormal Low Flow, Looking Downriver (September 2021)



Base Flow, Looking Downriver (February 2020)



Runoff Flow, Looking Upriver (May 2019)



Base Flow, Looking Upriver (February 2020)



San Juan Watershed Long Term Monitoring Project

Animas and San Juan Rivers with Tributaries
AZ, CO, NM, UT, Navajo Nation, Ute Mountain
Ute, and Southern Ute Indian Tribe



[CLICK TO RETURN
TO PHOTO INDEX](#)

**Site 12
66Animas009.8
Animas River at CR 5000
above Farmington NM**

[Click to View Abnormal Low Flow](#)



Abnormal Low Flow, Looking Upriver (September 2021)



Base Flow, Looking Upriver (February 2020)



Runoff Flow, Looking Across (May 2019)



Base Flow, Looking Across (February 2020)



Abnormal Low Flow, Looking Across (September 2021)



Base Flow, Looking Across (February 2020)