



San Juan Long-Term Monitoring Project

Project Photo Log for the
San Juan River

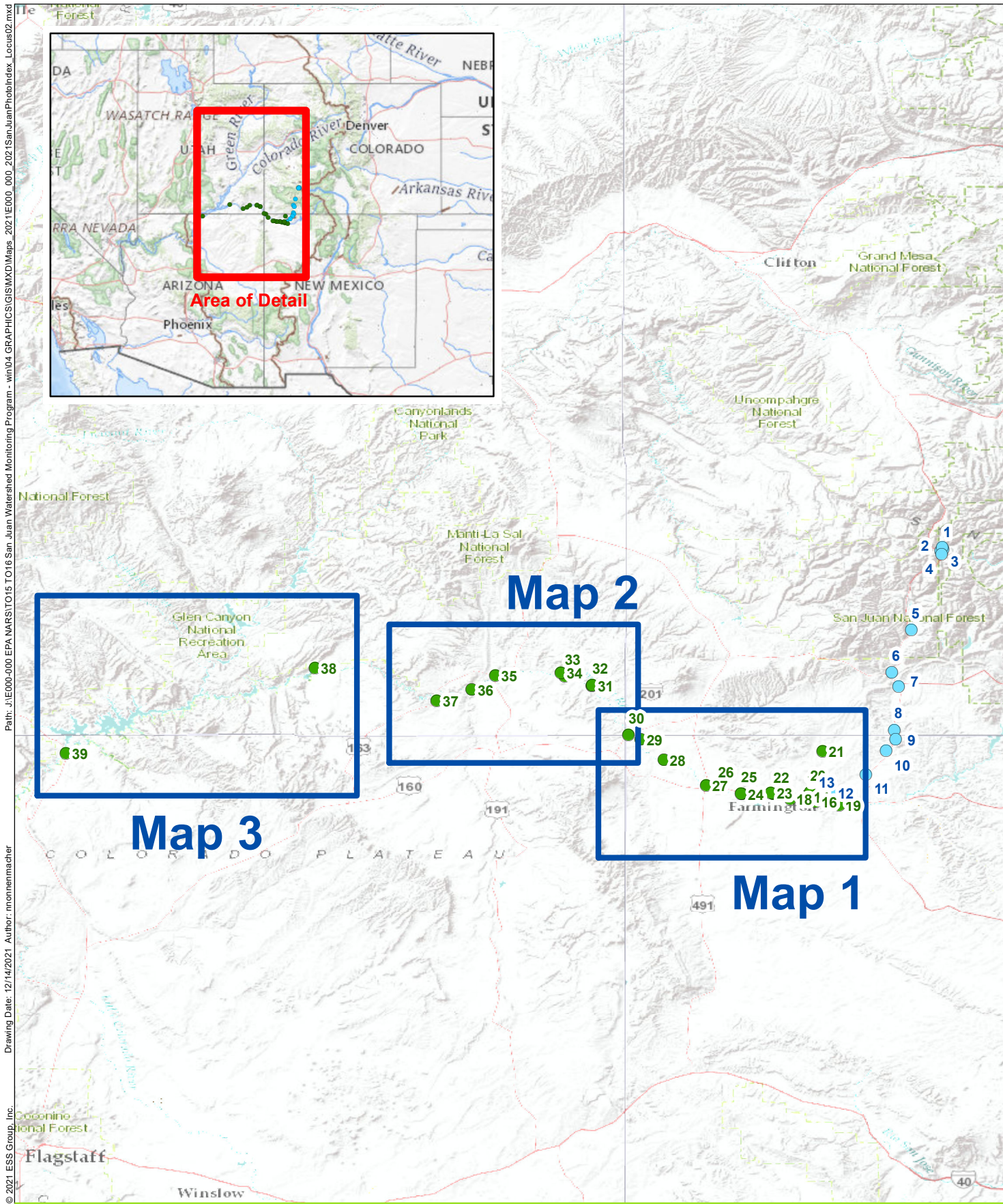




Photo Log Site Index

Site #	Site Name	Site Description	Page #
14	LVW-020	Lower Valley Water Users Association, Intake Sampling Location	7
15	10FRUCANAL40	Fruitland Canal at First Bridge Downstream from Headgate	8
16	64SanJua101.6	San Juan River Above Animas River	9
17	SJLP	San Juan River DS of the Animas Confluence	10
18	67SanJua088.1	San Juan River at Lions Park Near Kirtland	11
19	64Galleg000.4	Gallegos Canyon at San Juan River	12
20	67LaPlat002.3	La Plata River at Farmington City Park	13
21	67LaPlat024.8	La Plata River at La Plata, NM	14
22	67Steven000.7	Stevens Arroyo Below CR 6100	15
23	SJFP	San Juan River Upstream from PNM Fish Passage	16
24	10SANJUANR25	San Juan River at the Bottom of the Hogback Fish Passage	17
25	10HOGBACKC42	Hogback Canal Between Head Gate and First Waste Way	18
26	06CHACORIV04	Chaco River Near Mouth	19
27	SJSR	San Juan River at Shiprock Bridge	20
28	10SANJUANR26	San Juan River 15 Miles Downstream from Shiprock	21
29	07MANCOSRI01	Mancos River Near Mouth	22
30	SJ4C	San Juan River at US160 Xing in CO	23
31	02SANJUANR09	San Juan River at McElmo Creek	24
32	04MCELMOCR01	McElmo Creek at Highway U262 Xing	25
33	SJMC	San Juan River at U262 Xing Phillips Camp Road Xing (San Juan River at Town of Montezuma)	26
34	4953560	Montezuma Creek at U163 Xing	27
35	02SANJUANR08	San Juan River at Sand Island or San Juan at Bluff Bridge	28
36	01CHINLECR27	Chinle Creek Above Confluence with San Juan River	29
37	29SANJUANR05	San Juan River at Mexican Hat US163 Xing	30
38	SJCH	San Juan River at Clay Hills Boat Ramp	31
39	CGCLR713.70	USGS Gage 09379910 at Lees Ferry, Below Lake Powell on CO River	32

Click the site in the list above to navigate to that page



Path: J:\E000-000 EPA NARS\TO15 TO16\San Juan Watershed Monitoring Program - win\04 GRAPHICS\GIS\MXD\Maps - 2021\E000_000_2021SanJuanPhotoIndex_Locus02.mxd
 Drawing Date: 12/14/2021 Author: mnonnenmacher
 © 2021 ESS Group, Inc.

San Juan Watershed Long Term Monitoring Project

Animas and San Juan Rivers with Tributaries
 AZ, CO, NM, UT, Navajo Nation, Ute Mountain
 Ute, and Southern Ute Indian Tribe

**Sample Locations
 Within the San Juan Watershed
 Locus Map**

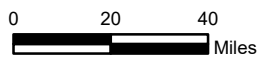


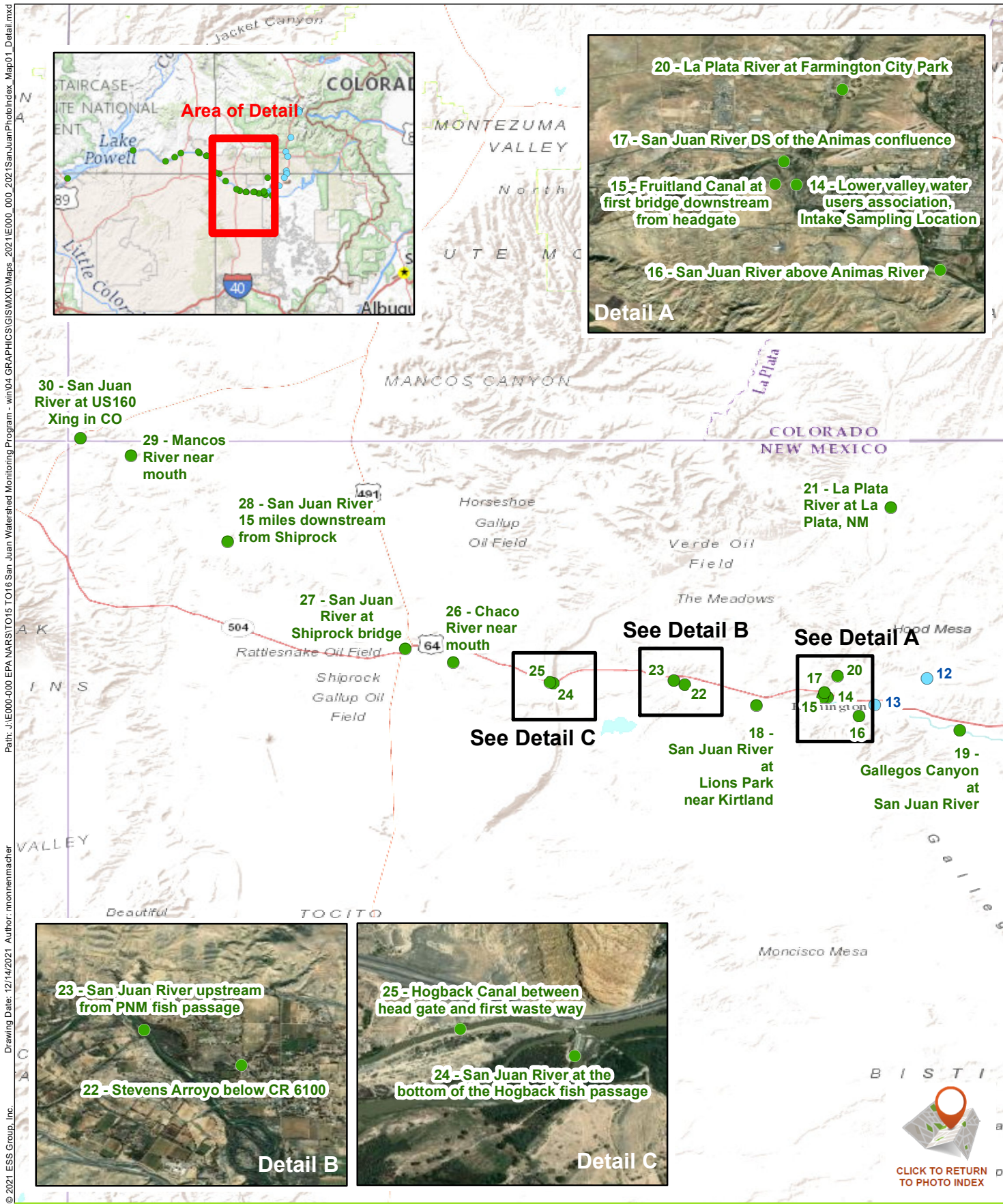
Legend

- Animas River and Tributaries Site
- San Juan River and Tributaries Site

Source:
 ESRI/USGS, National Map, 2021

**INSTRUCTIONS - CLICK MAP BOX
 FOR DETAIL OF THAT AREA**





Path: J:\E000-000-EPA-NARS\TO15 TO16 San Juan Watershed Monitoring Program - win04 GRAPHICS\GIS\MXD\Maps - 2021E000_000_2021SanJuanPhotoIndex_Map01_Detail.mxd
 Drawing Date: 12/14/2021 Author: mnonnenmacher
 © 2021 ESS Group, Inc.



San Juan Watershed Long Term Monitoring Project

Animas and San Juan Rivers with Tributaries
 AZ, CO, NM, UT, Navajo Nation, Ute Mountain
 Ute, and Southern Ute Indian Tribe

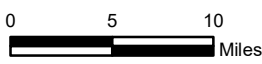
Source:
 ESRI/USGS, National Map, 2021

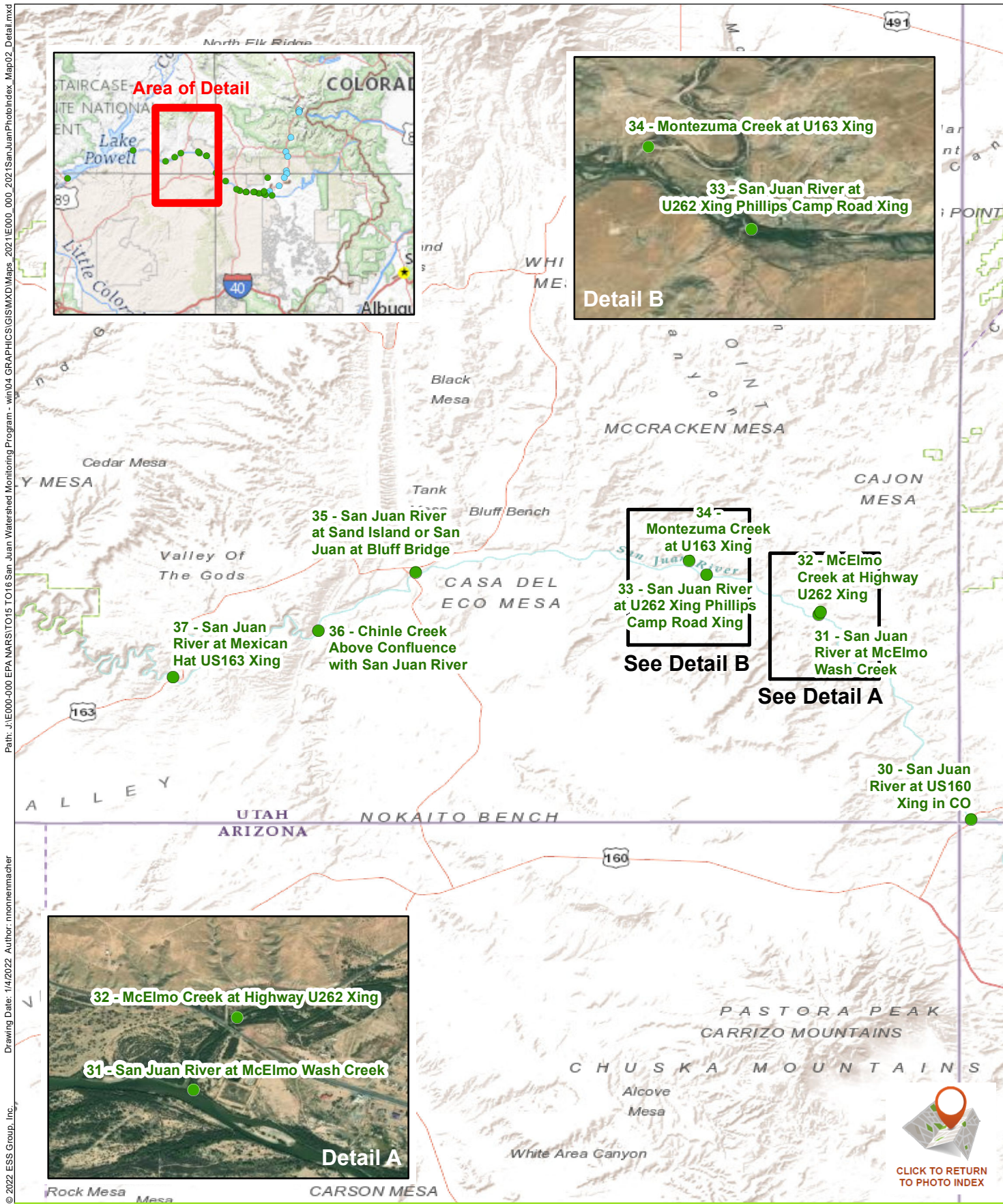
Legend

- Animas River and Tributaries Site
- San Juan River and Tributaries Site

San Juan River Sample Locations Within the San Juan Watershed

INSTRUCTIONS - CLICK MAP BOX FOR DETAIL OF THAT AREA





Path: J:\E000-000-EPA-NARS\TO15 TO16 San Juan Watershed Monitoring Program - win04 GRAPHICS\GIS\MXD\Maps - 2021E000_000_2021SanJuanPhotoIndex_Map02_Detail.mxd
 Drawing Date: 1/4/2022 Author: nnonnenmacher
 © 2022 ESS Group, Inc.

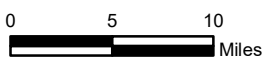


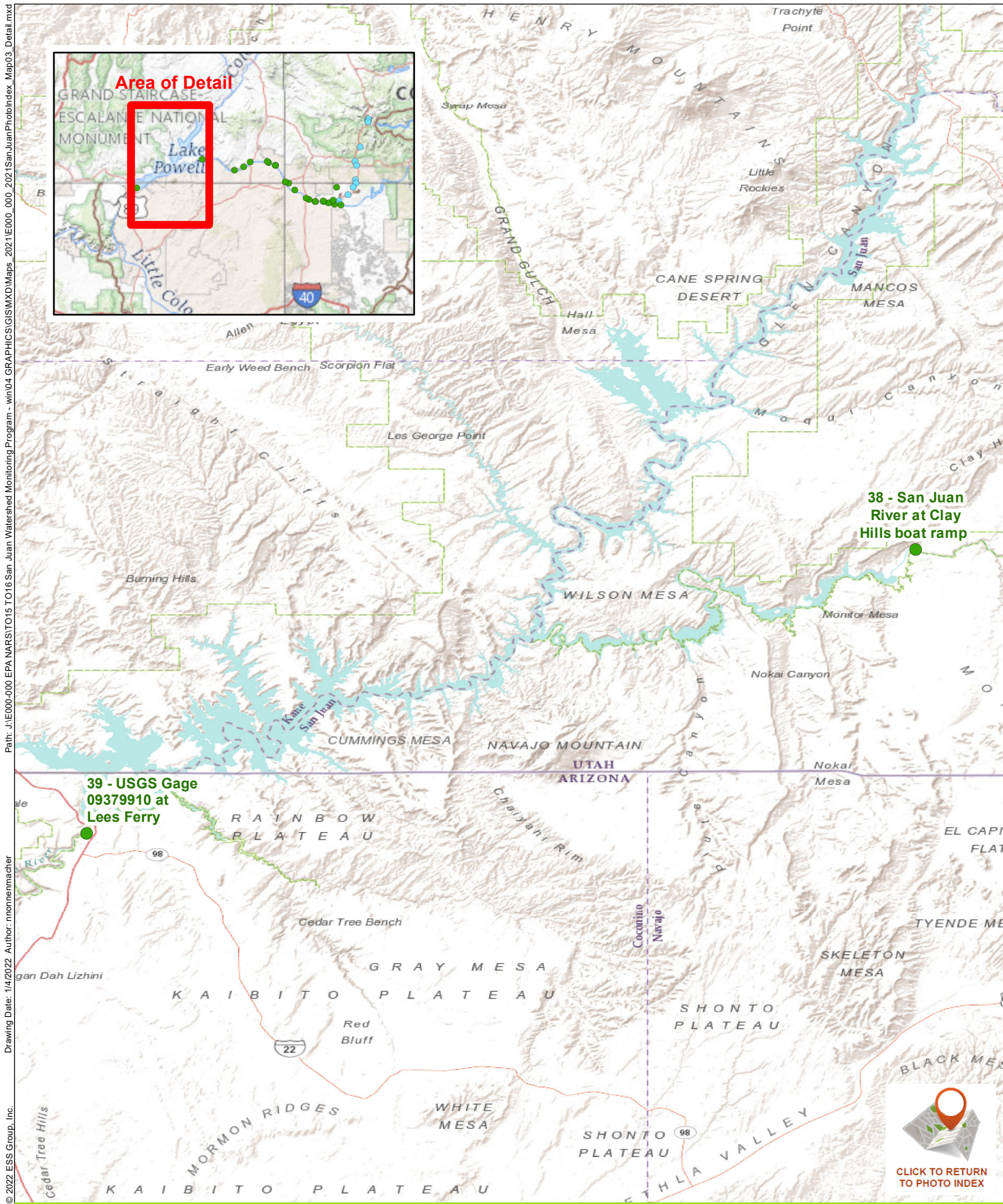
San Juan Watershed Long Term Monitoring Project

Animas and San Juan Rivers with Tributaries
 AZ, CO, NM, UT, Navajo Nation, Ute Mountain
 Ute, and Southern Ute Indian Tribe

**San Juan River Sample Locations
 Within the San Juan Watershed**

**INSTRUCTIONS - CLICK MAP BOX
 FOR DETAIL OF THAT AREA**





Path: J:\E000-000-EPA NARS\TO15 TO16\San Juan Watershed Monitoring Program - win94\GRAPHICS\GIS\MXD\Maps - 2021\E000_000_2021\SanJuanPhotoIndex_Map03_Detail.mxd
 Drawing Date: 1/4/2022 Author: mnonenmacher
 © 2022 ESS Group, Inc.

San Juan Watershed Long Term Monitoring Project
 Animas and San Juan Rivers with Tributaries
 AZ, CO, NM, UT, Navajo Nation, Ute Mountain
 Ute, and Southern Ute Indian Tribe

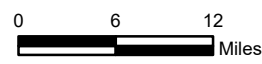
**San Juan River Sample Locations
 Within the San Juan Watershed**

Legend

- Animas River and Tributaries Site
- San Juan River and Tributaries Site

Source:
 ESRI/USGS, National Map, 2021

**INSTRUCTIONS - CLICK MAP BOX
 FOR DETAIL OF THAT AREA**





Runoff Flow, Looking Upriver (May 2021)



Base Flow, Looking Upriver (February 2020)



Runoff Flow, Looking Downriver (May 2019)



Base Flow, Looking Downriver (October 2019)



Runoff Flow, Looking Downriver (May 2019)



Base Flow, Looking Downriver (October 2019)



Runoff Flow, Looking Downriver (May 2019)



Base Flow, Looking Downriver (February 2020)



Runoff Flow, Looking Downriver (May 2021)



Base Flow, Looking Downriver (February 2020)



Runoff Flow, Looking Downriver (May 2019)



Base Flow, Looking Downriver (February 2020)



Runoff Flow, Looking Downriver (February 2020)



Base Flow, Looking Downriver (October 2019)



Runoff Flow, Looking Upriver (February 2020)



Base Flow, Looking Upriver (October 2019)



Runoff Flow, Looking Downriver (May 2019)



Base Flow, Looking Downriver (February 2020)



Runoff Flow, Looking Upriver (May 2021)



Base Flow, Looking Upriver (February 2020)



Runoff Flow, Looking Upriver (May 2019)



Base Flow, Looking Upriver (February 2020)



Runoff Flow, Looking Downriver (May 2019)



Base Flow, Looking Downriver (October 2019)



Runoff Flow, Looking Downriver (May 2019)



Base Flow, Looking Downriver (February 2020)



Runoff Flow, Looking Upriver (May 2019)



Base Flow, Looking Upriver (February 2020)



Runoff Flow, Looking Downriver (May 2019)



Base Flow, Looking Downriver (October 2019)



Runoff Flow, Looking Upriver (May 2019)



Base Flow, Looking Upriver (February 2020)



Runoff Flow, Looking Upriver (May 2021)



Base Flow, Looking Upriver (May 2021)



Runoff Flow, Looking Upriver (May 2021)



Base Flow, Looking Upriver (February 2020)



Runoff Flow, Looking Upriver (October 2019)



Base Flow, Looking Upriver (September 2021)



Runoff Flow, Looking Upriver (September 2021)



Base Flow, Looking Upriver (October 2019)



Runoff Flow, Looking Upriver (March 2019)



Base Flow, Looking Upriver (February 2020)



Runoff Flow, Looking Upriver (May 2021)



Base Flow, Looking Upriver (February 2020)



Runoff Flow, Looking Upriver (May 2019)



Base Flow, Looking Upriver (October 2020)



Runoff Flow, Looking Downriver (June 2019)



Base Flow, Looking Downriver (February 2020)



Runoff Flow, Looking Downriver (May 2021)



Base Flow, Looking Downriver (September 2021)



Runoff Flow, Looking Across (May 2019)



Base Flow, Looking Across (October 2019)