

The image features the OSHA logo prominently in the center. The logo consists of a stylized 'O' with a blue outer ring and a grey inner ring, followed by the letters 'S', 'H', and 'A' in a white, serif font with a slight shadow effect. The background is a close-up, slightly blurred view of the American flag, showing the stars and stripes in shades of red, white, and blue.

OSHA

adds value to business,
work and life.

Guidance on Security Screening X-ray Devices

Security Screening Equipment and Worker Protection

Doreen Hill, Ph.D.
Directorate of Standards and Guidance

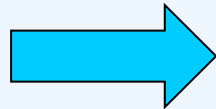
What?

- **The Occupational Safety and Health Administration (OSHA) is recommending policies and procedures that will eliminate unnecessary exposure to x-rays from security screening devices.**
 - ***Guidelines are advisory in nature and informational in content.***
 - ***Not a standard or regulation. Voluntary.***

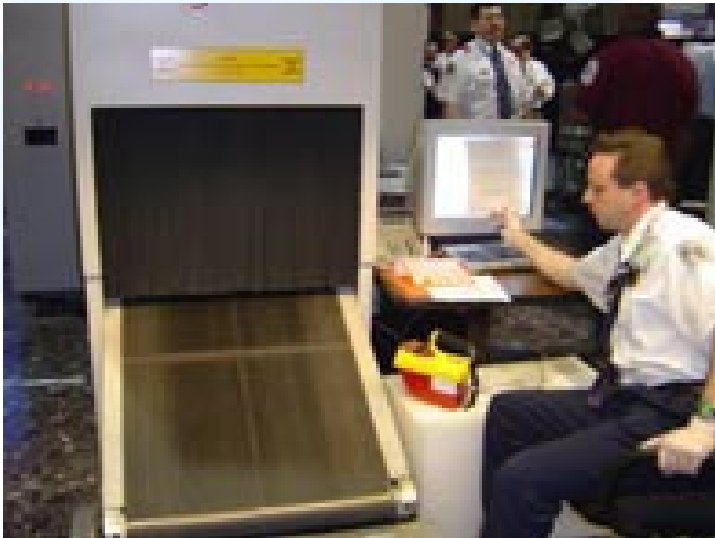


What?

Will describe



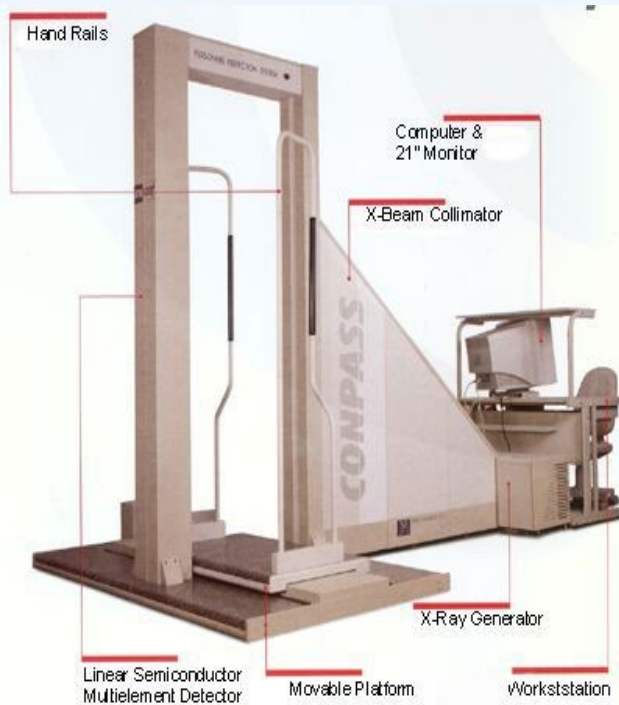
- **Potential risks and hazards**
- **Any regulatory requirements**
- **Good work practices**
- **Safety approaches and programs**



What?

- All types of uses:

***Baggage
Cargo
Personnel***



- Small and large systems

Why?

Technological developments and applications of x-ray machines for security screening have rapidly increased as our concern for national security and other risks has escalated.

Why?

- **More machines**
- **More screenings**
- **More workers potentially exposed**



- **Greater need to ensure good work practices while meeting our security requirements.**

Why?



References

- **NCRP Commentary No. 16 2003**
- **NCRP Commentary No. 20 2007**
- **ISCORS GUSSHUIR**
- **ANSI/IEEE 42.47-2010**
- **ANSI/IEEE 42.4006-2008**
- **ANSI/HPS N43.17-2009**
- **ANSI/HPS N43.16 (pending)**
- **NIOSH HETA #2003-0206-3067 (and other Health Hazard Evaluation reports**
- **Information from FDA**
- **Information from TSA**

Contents

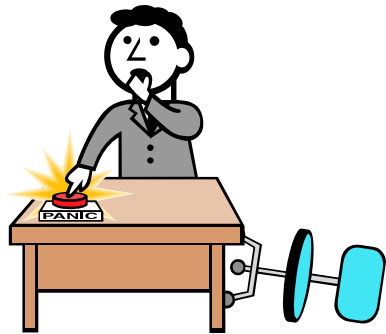
- **Executive Summary and Introduction**
- **What are X-ray screening devices?**
- **Radiation Safety**
- **What are the radiation doses?**
- **NIOSH study**
- **A process for protecting workers**
 - **Engineering and Administrative Controls**
- **Where to go for more information**
- **References and Appendices**

Audience and Stakeholders

- **Primarily Employers**
- **Should also be employee-friendly**
- **Organizations that use x-ray security screening equipment**
 - Federal government
 - State and local government
 - Private sector users, e.g. building managers, security firms, etc.

When?

- **Internal review draft completed**
- **Provide to ISCORS Guidance Subcommittee November 15**
- **ISCORS review simultaneous with OSHA/DOL review**
- **30 day comment period is the goal**
- **It is a short document -- no need to panic**



The background of the image is a close-up, slightly blurred view of the American flag, showing the stars and stripes. The OSHA logo is centered in the upper half of the image. The letter 'O' is a large, stylized circle with a blue outer ring and a grey inner ring. The letters 'S', 'H', and 'A' are white with a 3D effect and a drop shadow. The text 'OSHA' is in a large, bold, serif font.

OSHA

adds value to business,
work and life.