

PROP 68 TECHNICAL ASSISTANCE PROGRAM FOR TRIBAL GOVERNMENTS AND UNDERREPRESENTED COMMUNITIES

REGIONAL TRIBAL OPERATIONS COMMITTEE

JULY 28, 2022

PRESENTED BY JANE GRAY AND MATT NAFTALY

DUDEK

1

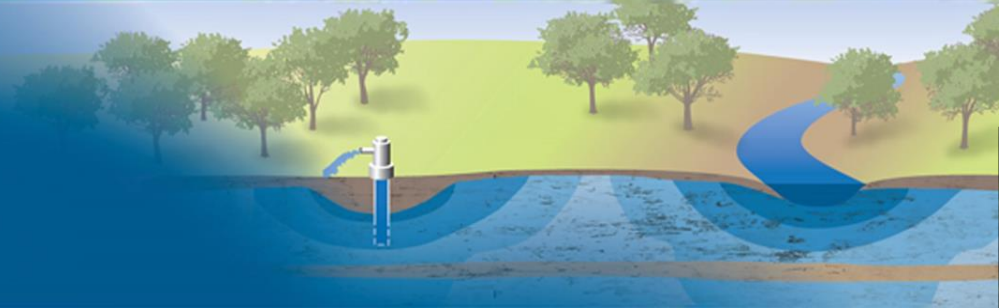
Overview and Purpose of the Technical Assistance Program



PROP 68 TECHNICAL ASSISTANCE
PROGRAM FOR TRIBAL
GOVERNMENTS
AND UNDERREPRESENTED
COMMUNITIES

DUDEK

Overview



- **Within the State of California, Tribes and Tribal Communities face multiple challenges regarding access to clean, affordable, and sustainable groundwater and water resources.**
- **Tribal communities are disproportionately impacted by water supply and water quality challenges, such as overdraft in basins and contamination, that is either anthropogenic or naturally occurring.**
- **Tribal Governments and Tribal Communities are not often at the table or in the discussion as it relates to decisions about water resources and water quality.**

Purpose of the Program

- **Communicate and Engage Tribal Governments and Tribal Communities in Sustainable Groundwater Management Act (SGMA) regulated Basins**
- **Listen to Tribal Governments and Tribal Communities to understand water related needs, concerns, risks and vulnerabilities**
- **Conduct water related needs, risk, and vulnerability assessments.**
- **Work with Tribes on technical assistance services to address needs, risks, and vulnerabilities in communities and water systems.**

2

Geographic Boundaries

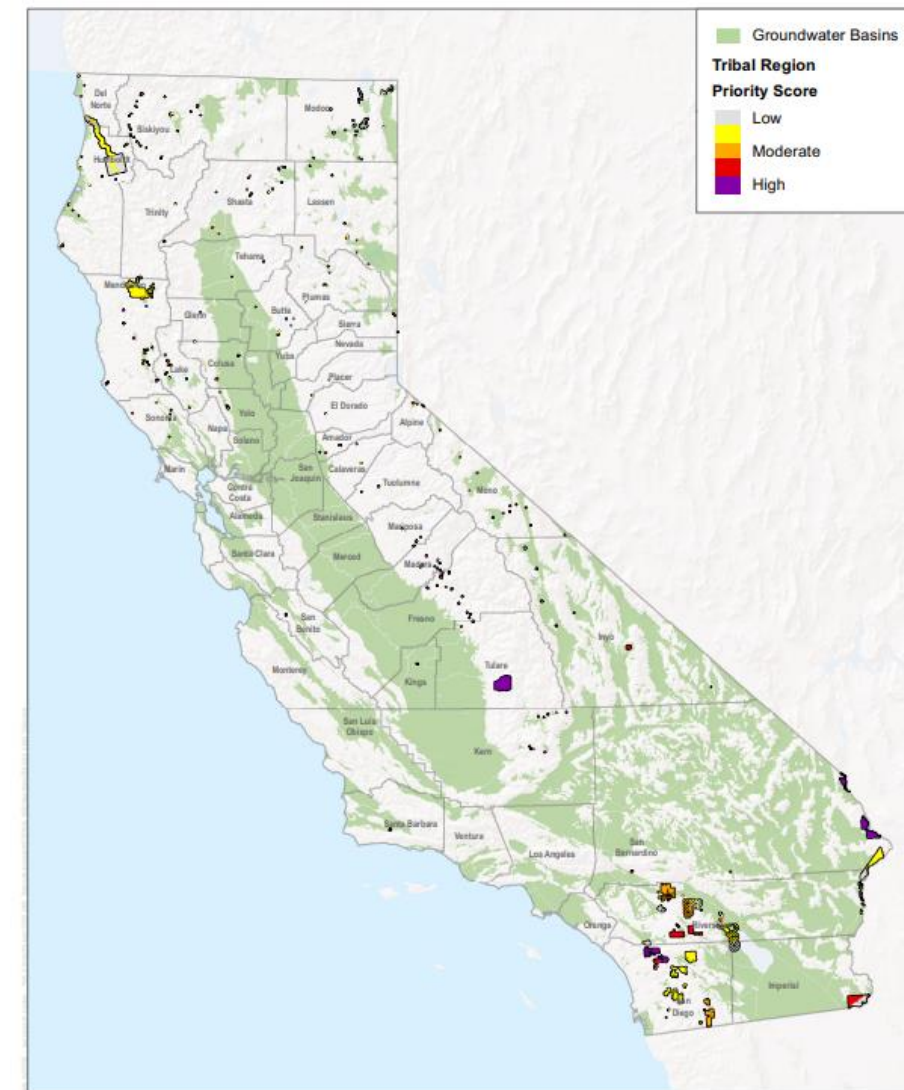


PROP 68 TECHNICAL ASSISTANCE
PROGRAM FOR TRIBAL
GOVERNMENTS
AND UNDERREPRESENTED
COMMUNITIES

DUDEK

Geographic Boundaries – Tribal Governments

All land within the State of California that is owned or subject to an ownership or possessory interest of the Tribe, land defined as “Indian Lands” by 25 USC 81 (a)(1), and land that is owned by a Tribal entity, or Tribe, within the external border of such Indian Lands.



3

Heat Mapping

PROP 68 TECHNICAL ASSISTANCE
PROGRAM FOR TRIBAL
GOVERNMENTS
AND UNDERREPRESENTED
COMMUNITIES

DUDEK

Heat Mapping

Established rubric for identifying highest priority Tribal Governments and for assistance based on relevant characteristics using a publicly available, transparent, and reproducible process.

The tools used are adaptable to changing conditions, data sources, and program priorities.

PROP 68 TECHNICAL ASSISTANCE
PROGRAM FOR TRIBAL
GOVERNMENTS
AND UNDERREPRESENTED
COMMUNITIES

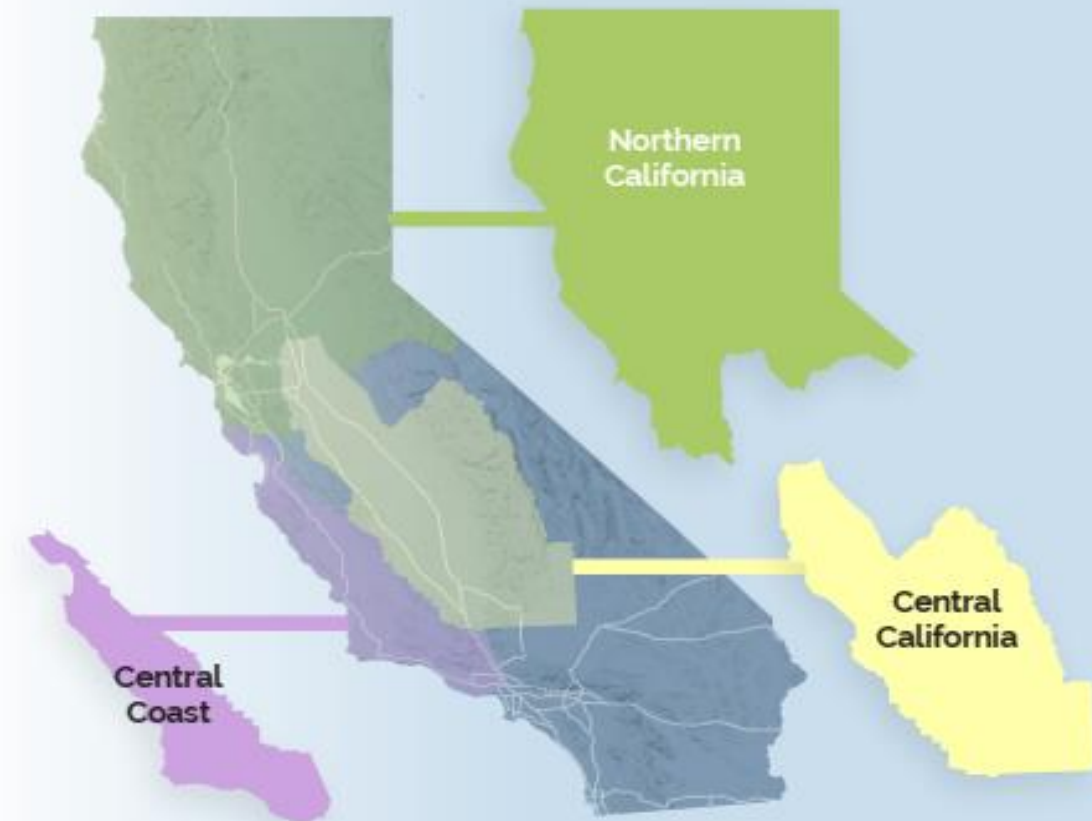


Mapping Water Supply Issues

The Technical Assistance Program will identify communities throughout California with water supply problems such as dry groundwater wells, water shortages, or poor water quality. Below is a step-by-step look at how DWR and Dudek used Geographic Information System (GIS) technology to find, rank, and map the Communities of greatest need.*

1 Collect data

Using publicly available data (listed below), DWR prepared a community identification tool (CIT) that collects relevant information for each census block within the State of California. The data includes, but is not limited to, Median Household Income (MHI), threats to groundwater, access to drinking water, and surface water quality. The information is stored in a database that is used to quantify areas of greatest water-related need and applied statewide for Tribal Communities and hydrologic regions including Northern California, Central California, and California's Central Coast.

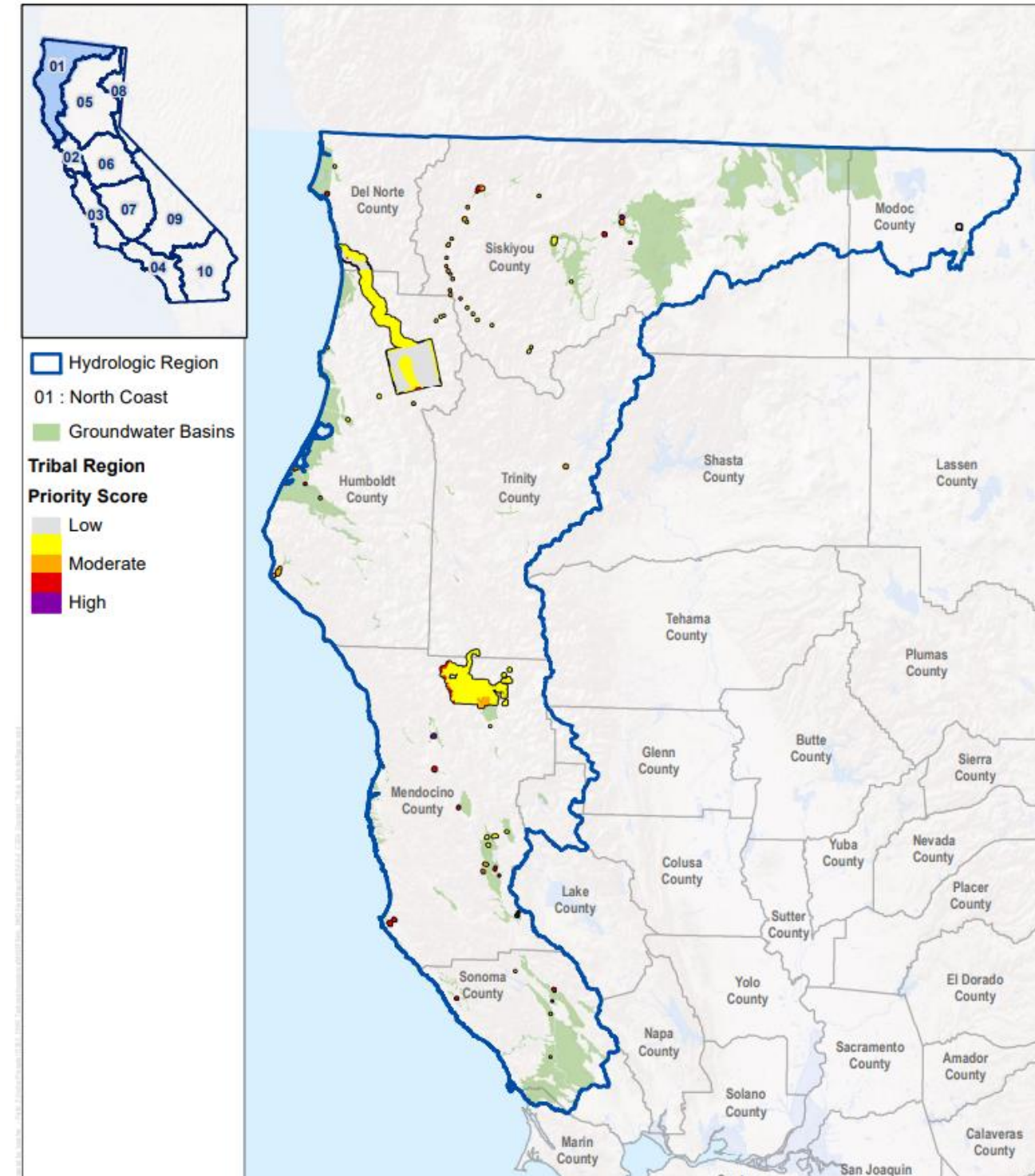


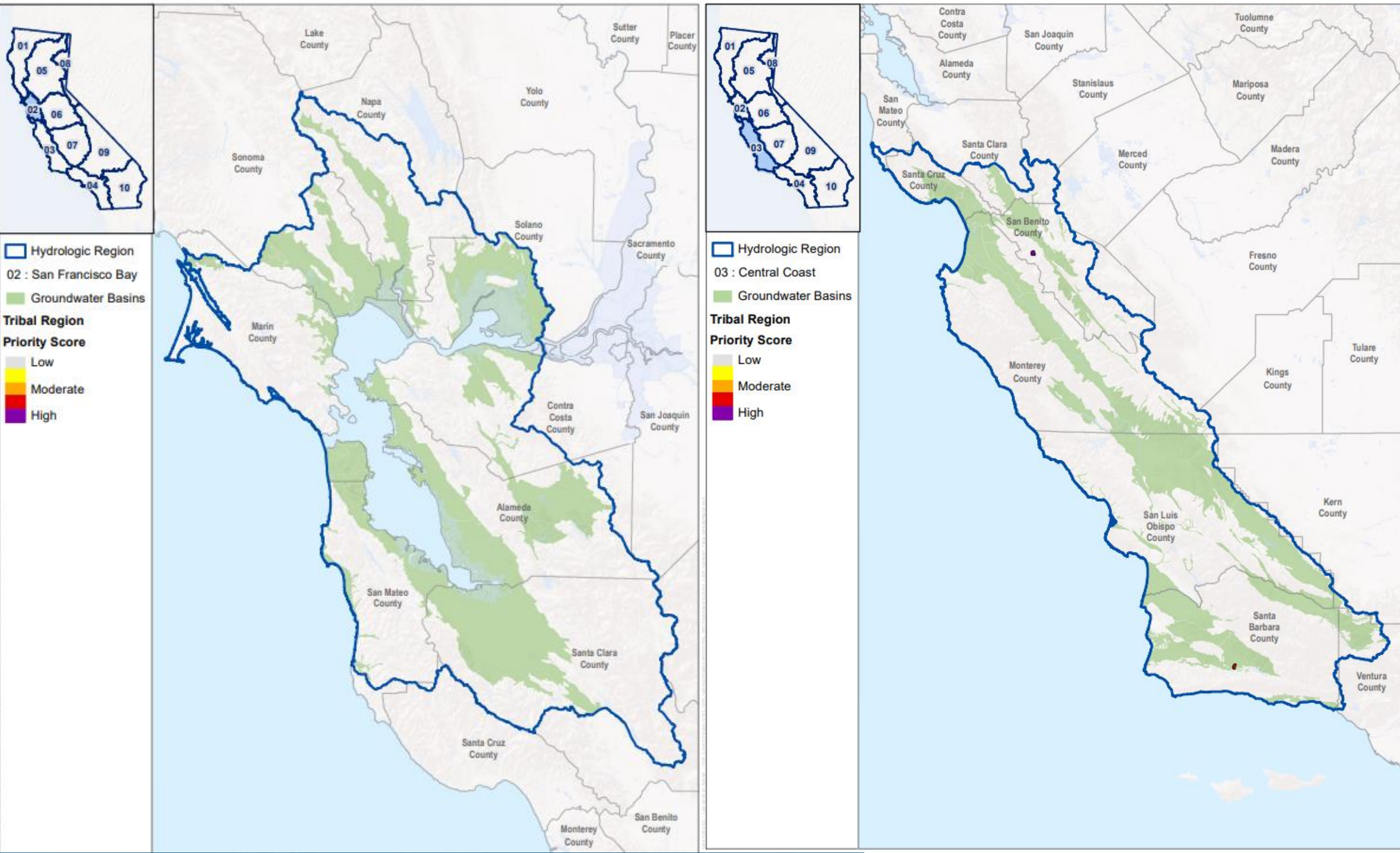
Heat Mapping and Tribal Engagement

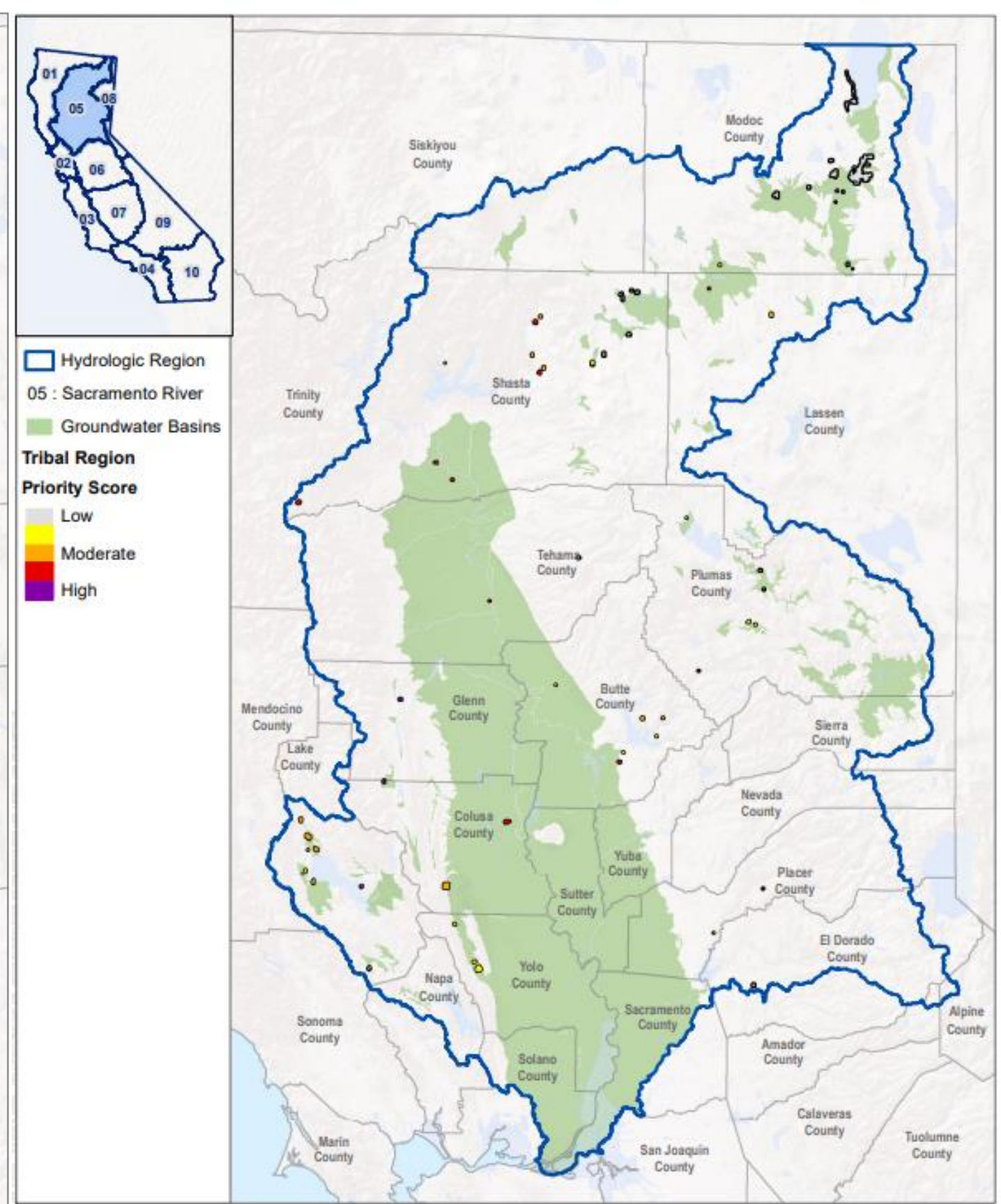
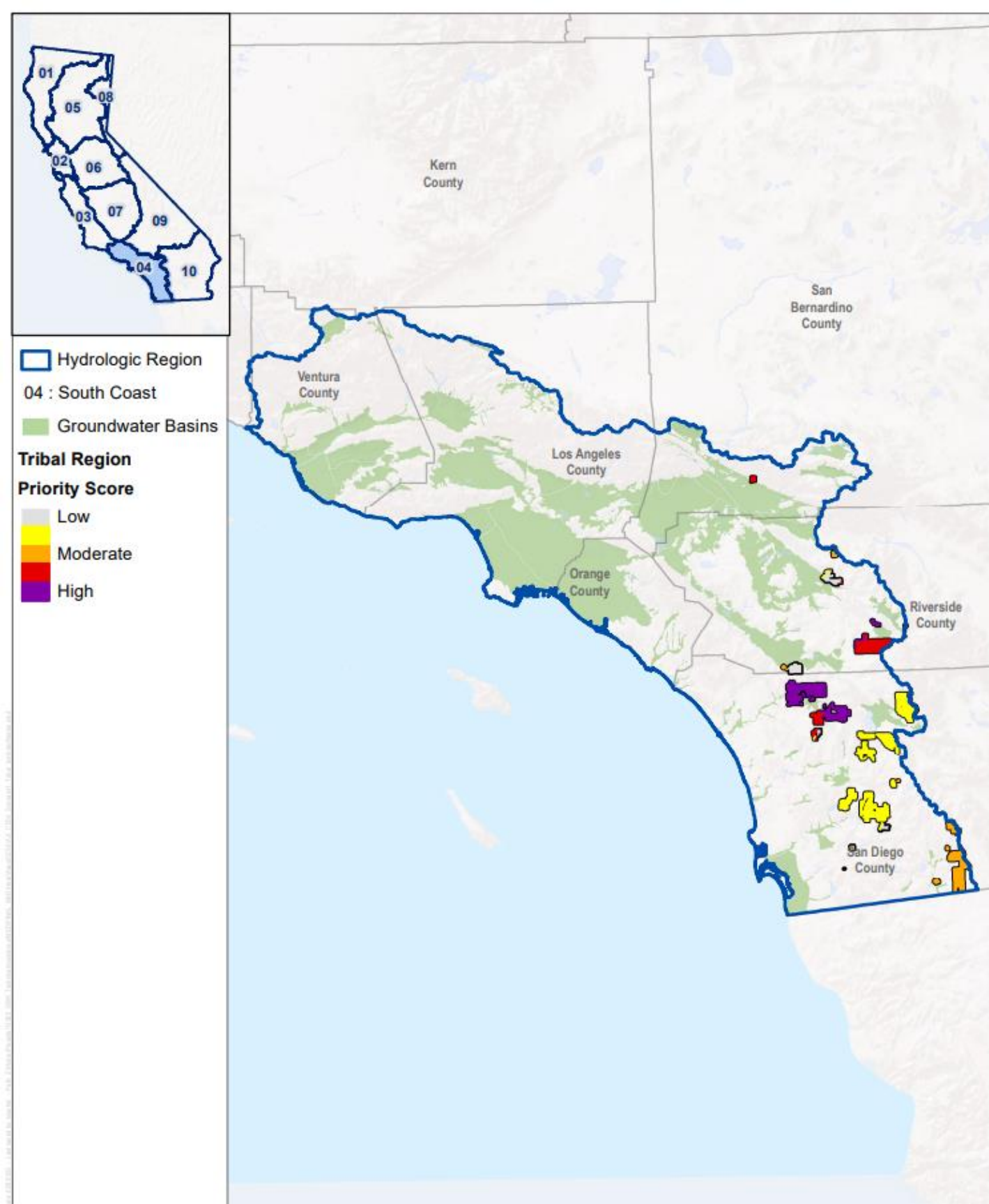
- **We would like to hear from you on:**
 - Program opportunities and messaging
 - Tribal governments and communities to collaborate with (Federally and Non-Federally recognized)
 - Presentation opportunities
 - Feedback on the mapping
 - Scoring rubric and criteria

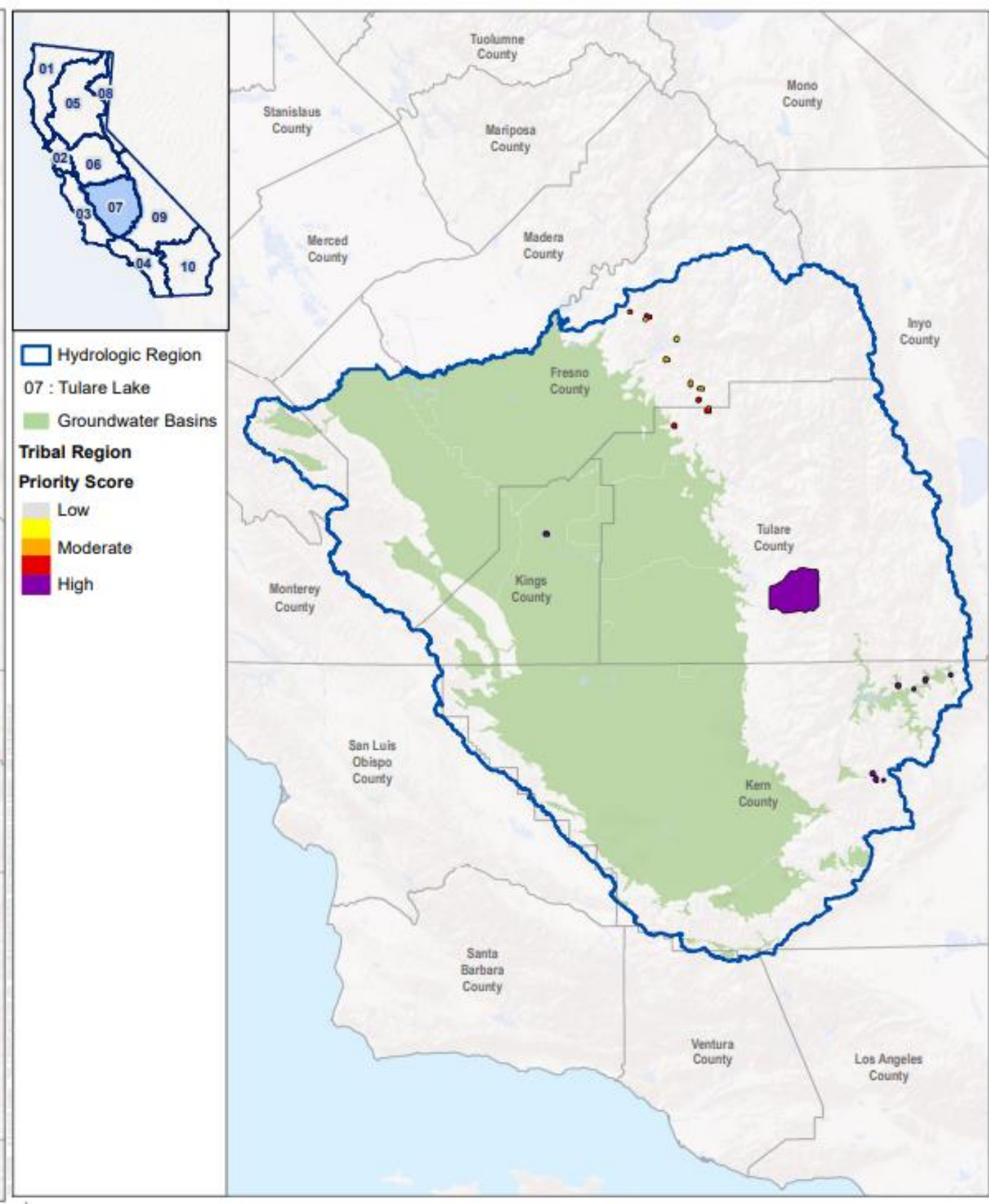
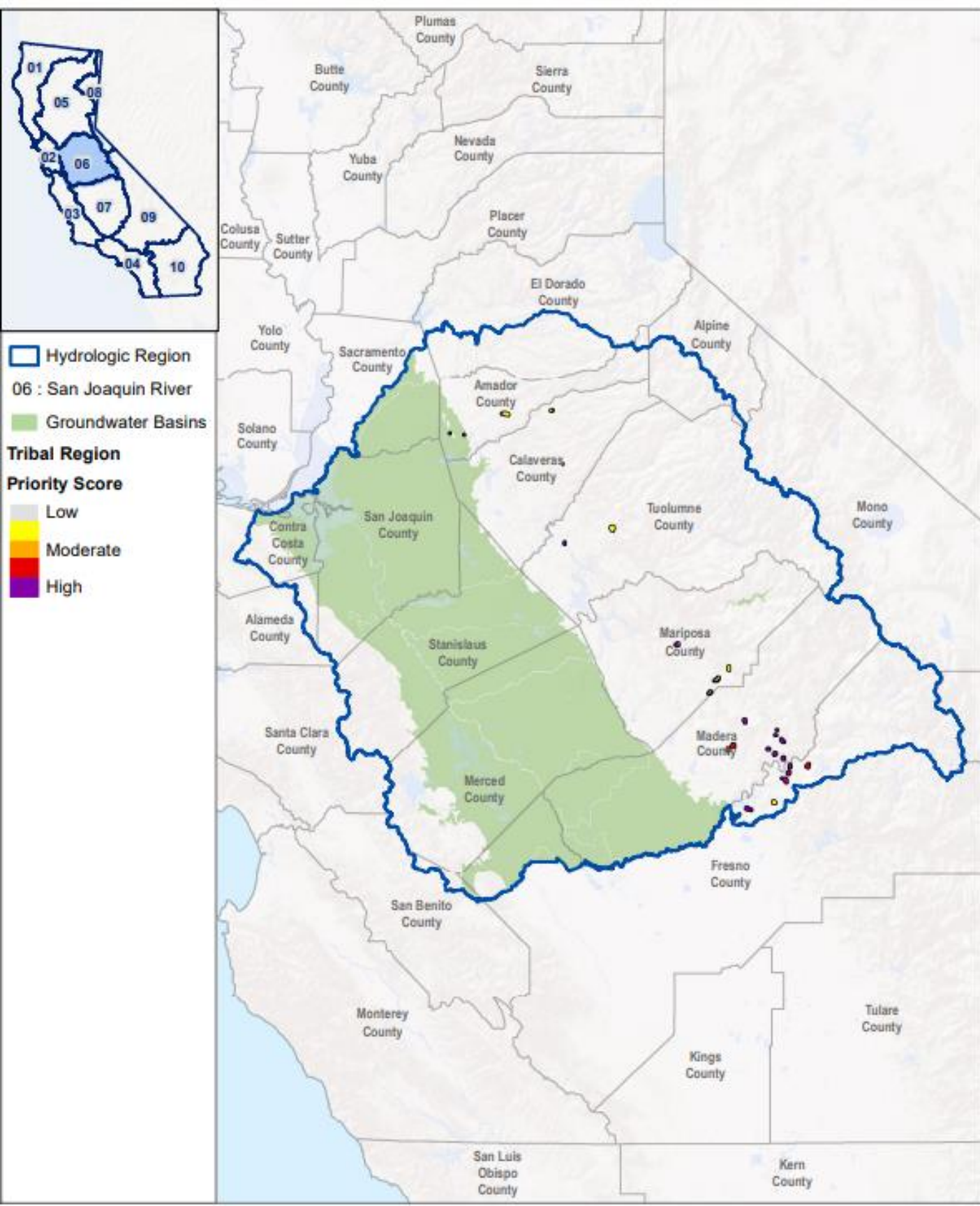
PROP 68 TECHNICAL ASSISTANCE
PROGRAM FOR TRIBAL
GOVERNMENTS
AND UNDERREPRESENTED
COMMUNITIES

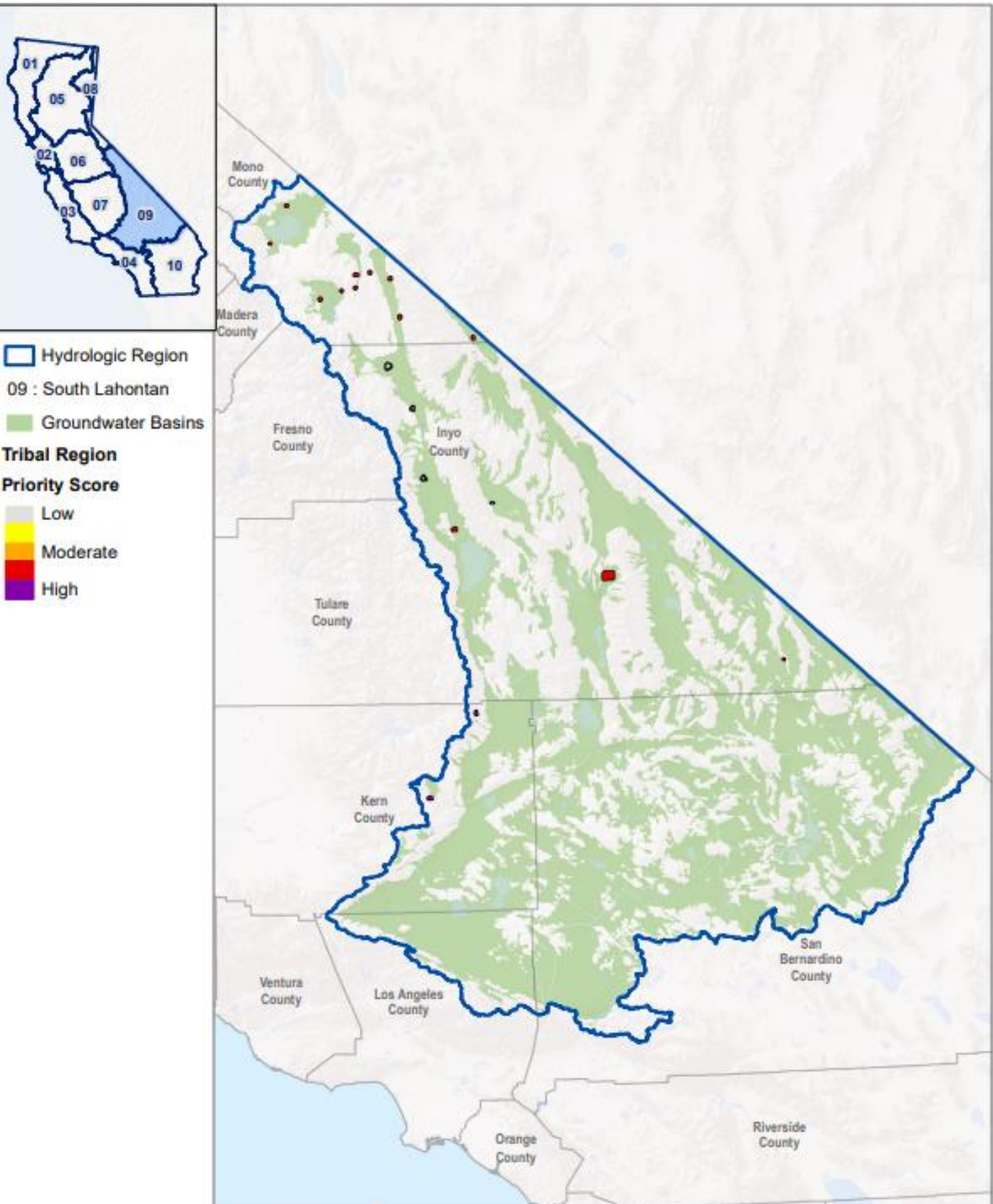
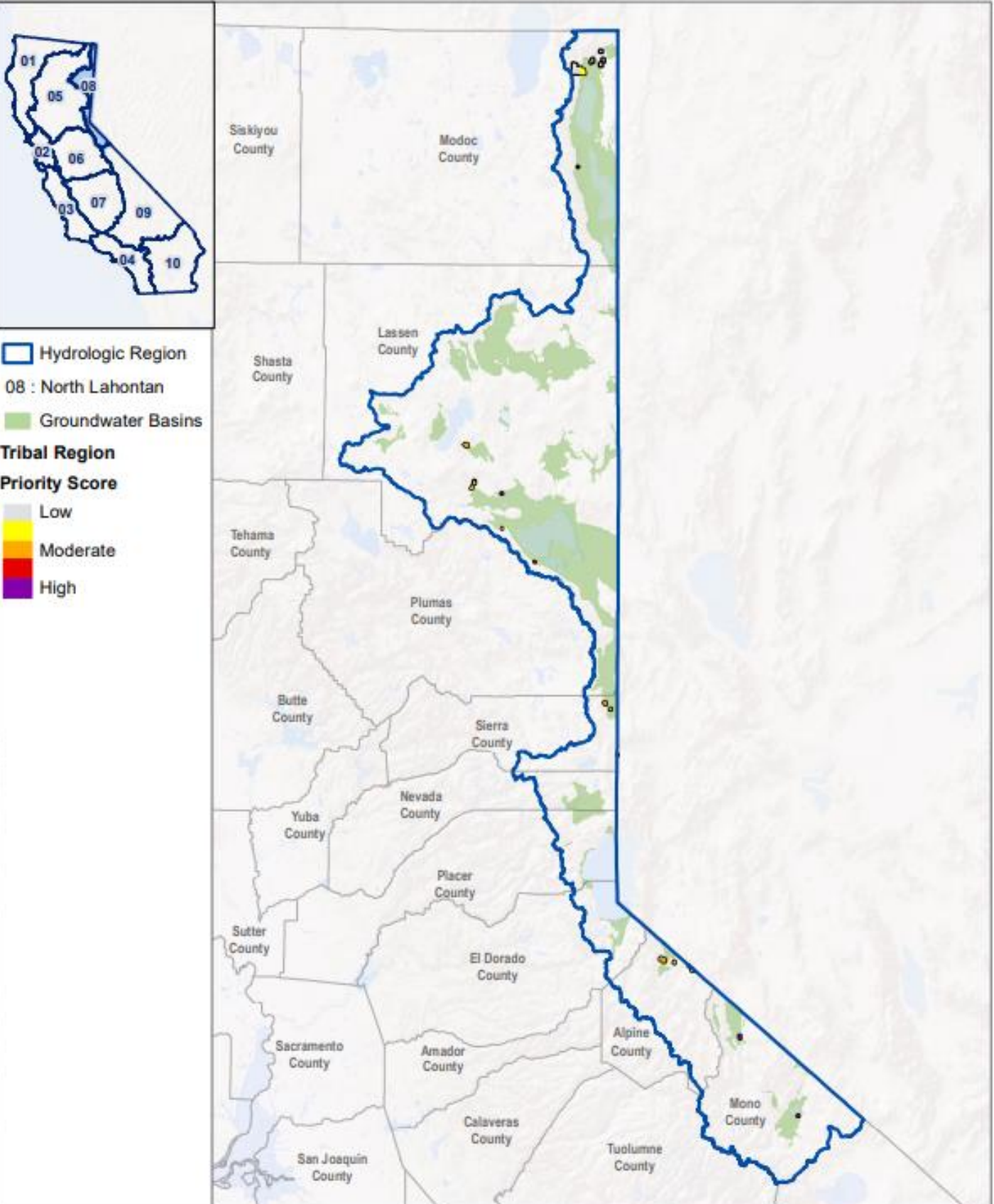
DUDEK











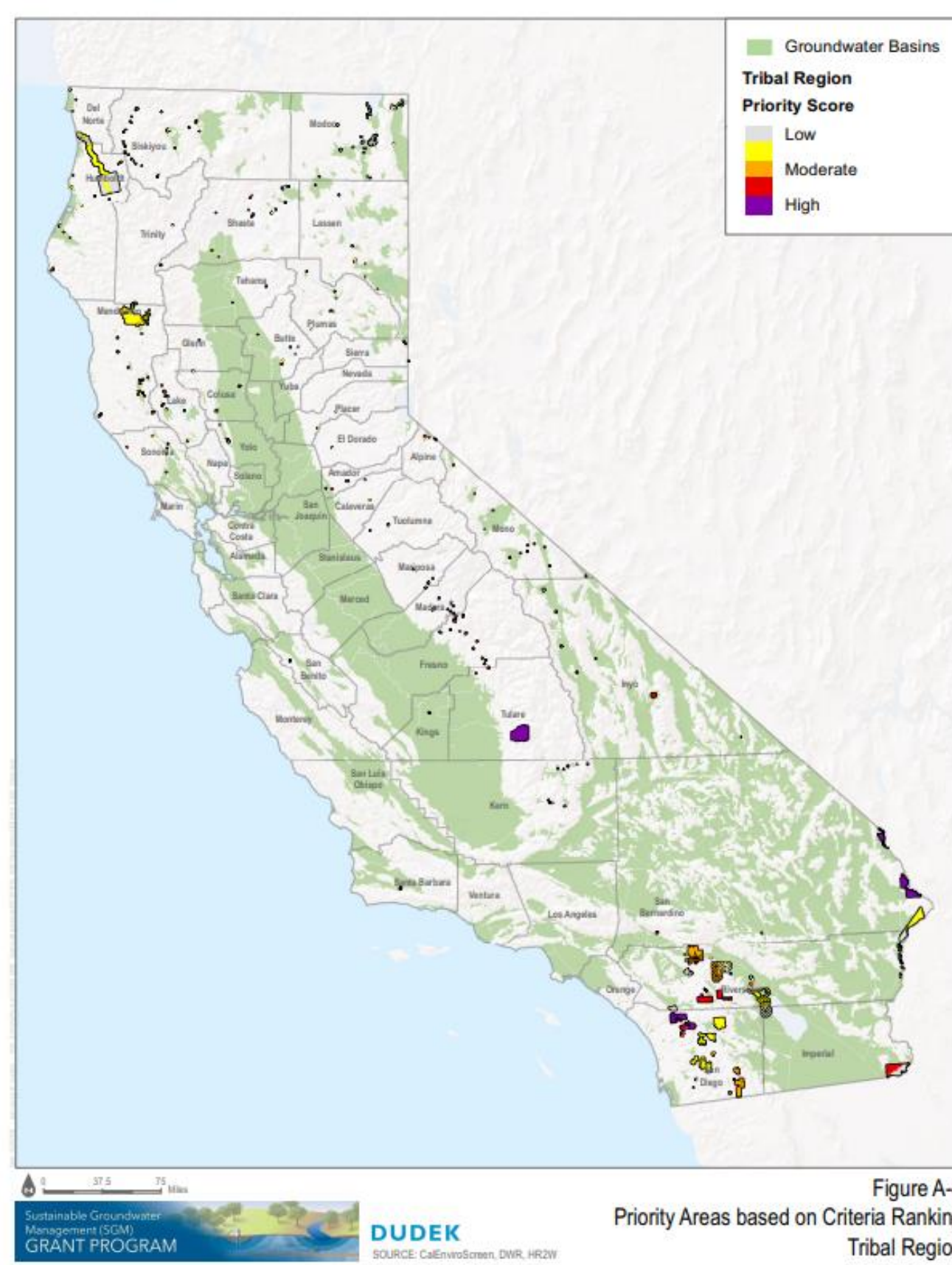
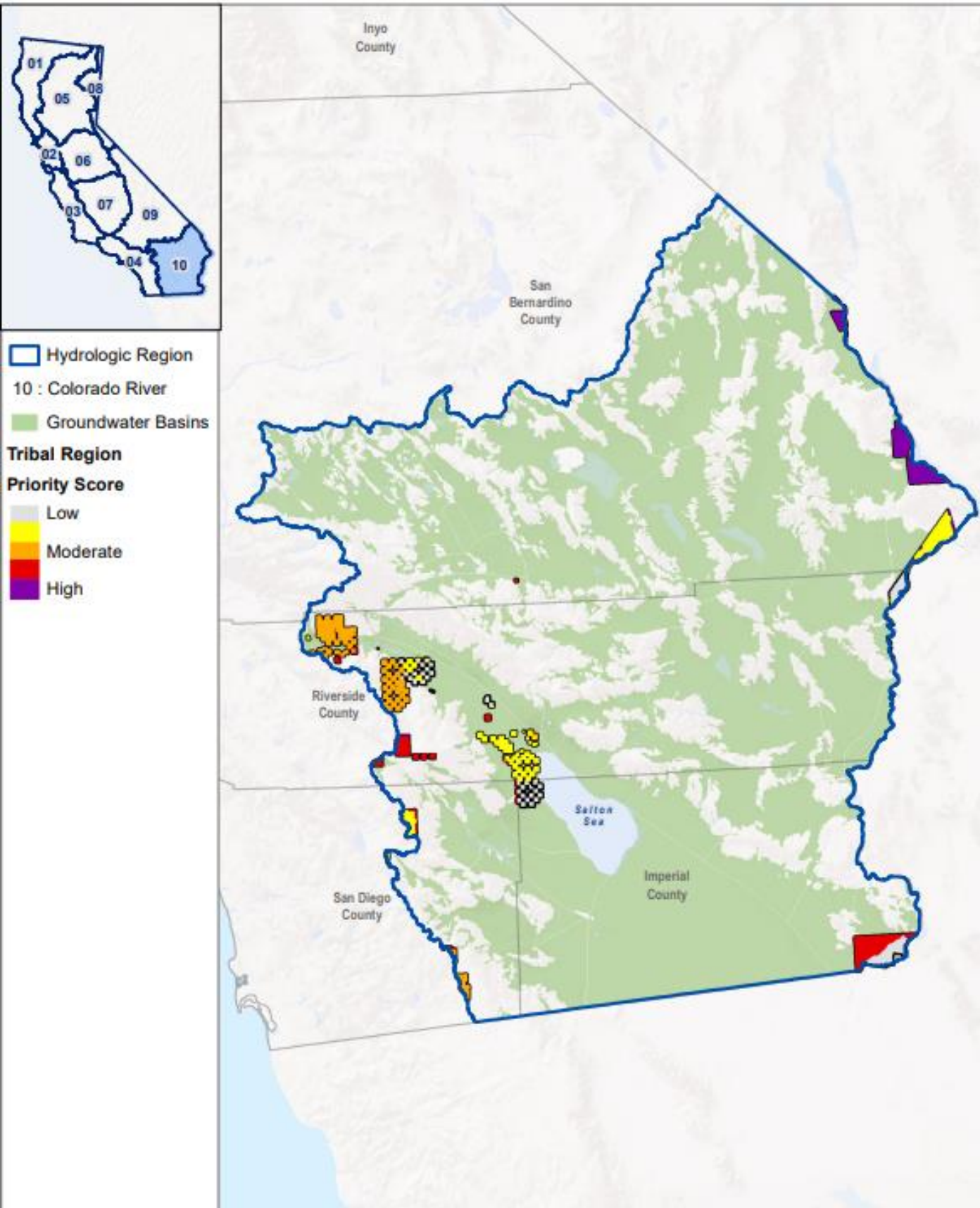


Figure A-4
Priority Areas based on Criteria Ranking
Tribal Region

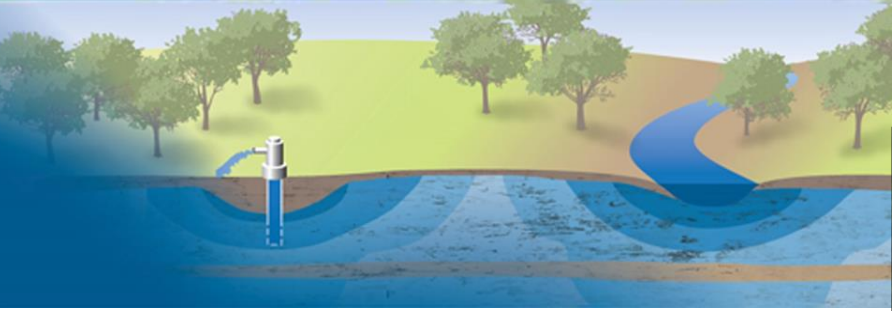
4

Communication & Engagement Plan

PROP 68 TECHNICAL ASSISTANCE
PROGRAM FOR TRIBAL
GOVERNMENTS
AND UNDERREPRESENTED
COMMUNITIES

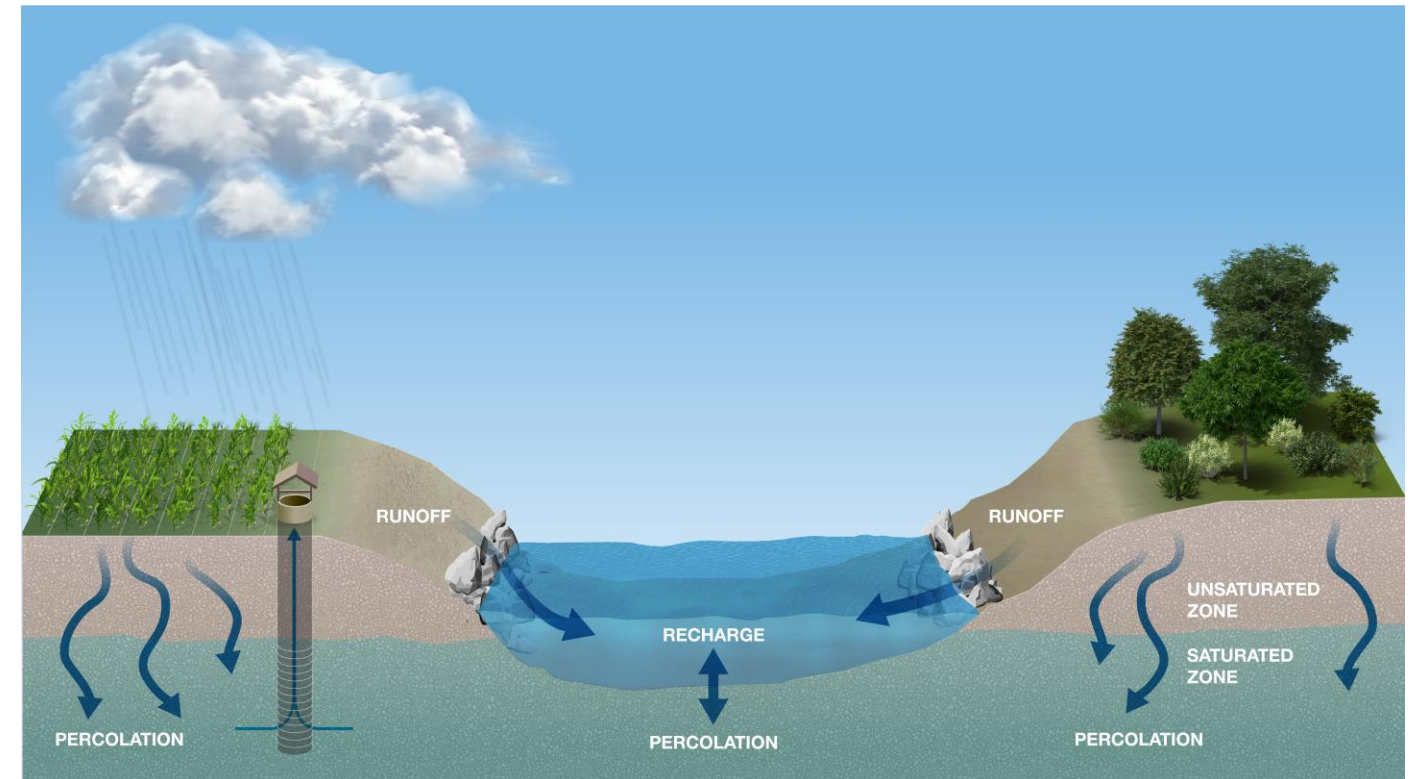
DUDEK

Communication and Engagement - Tools

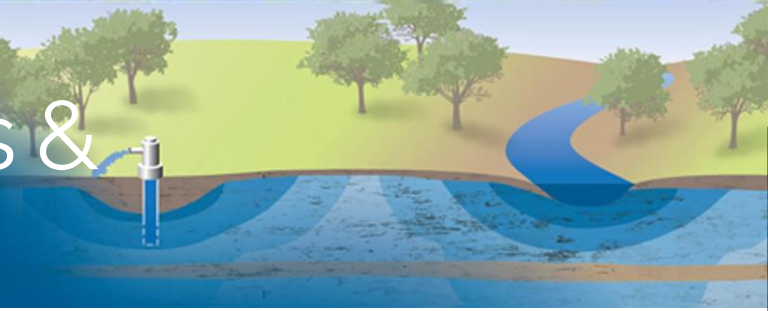


Language-appropriate
and culturally sensitive
materials including:

- Letters
- Emails
- Phone/Zoom Calls
- Videos
- Animations
- Radio content – PSAs
- Flyers and brochures
- Social Media Posts
 - Twitter
 - Facebook
 - Instagram
 - TikTok



Communication and Engagement – Presentations & Discussions



Project Team is:

- **Working with Tribal Governments and GSAs on Workshops**
- **Making presentations at GSA meetings, Advisory Committee Meetings**
- **Conducting Zoom conversations with NGOs, CBOs, GSA leadership, Elected Officials**
- **Coordinating In Person Workshops and Scheduling Needs/Risks/Vulnerability Assessments**

Needs/Risk/Vulnerability Assessment/Survey



Prop 68 Technical Assistance Program - Water Needs Assessment

Please select your language of choice for the survey.

[English](#)

[Español](#)

[简化中文](#)

[傳統漢語](#)

[Tagalog](#)

Done



PROP 68 TECHNICAL ASSISTANCE
PROGRAM FOR TRIBAL
GOVERNMENTS
AND UNDERREPRESENTED
COMMUNITIES

DUDEK

What We Are Hearing from Tribal Communities

- Importance of Groundwater Dependent Ecosystems
- Importance of inclusive water resources' planning and discussions with DWR with regard to land and trust issues
- Lack of access to ancestral lands and cultural resources
- Some Tribal communities are challenged with lack of access to reliable drinking water (dry wells, etc.)
- Water quality concerns in communities, including nitrates and pesticides

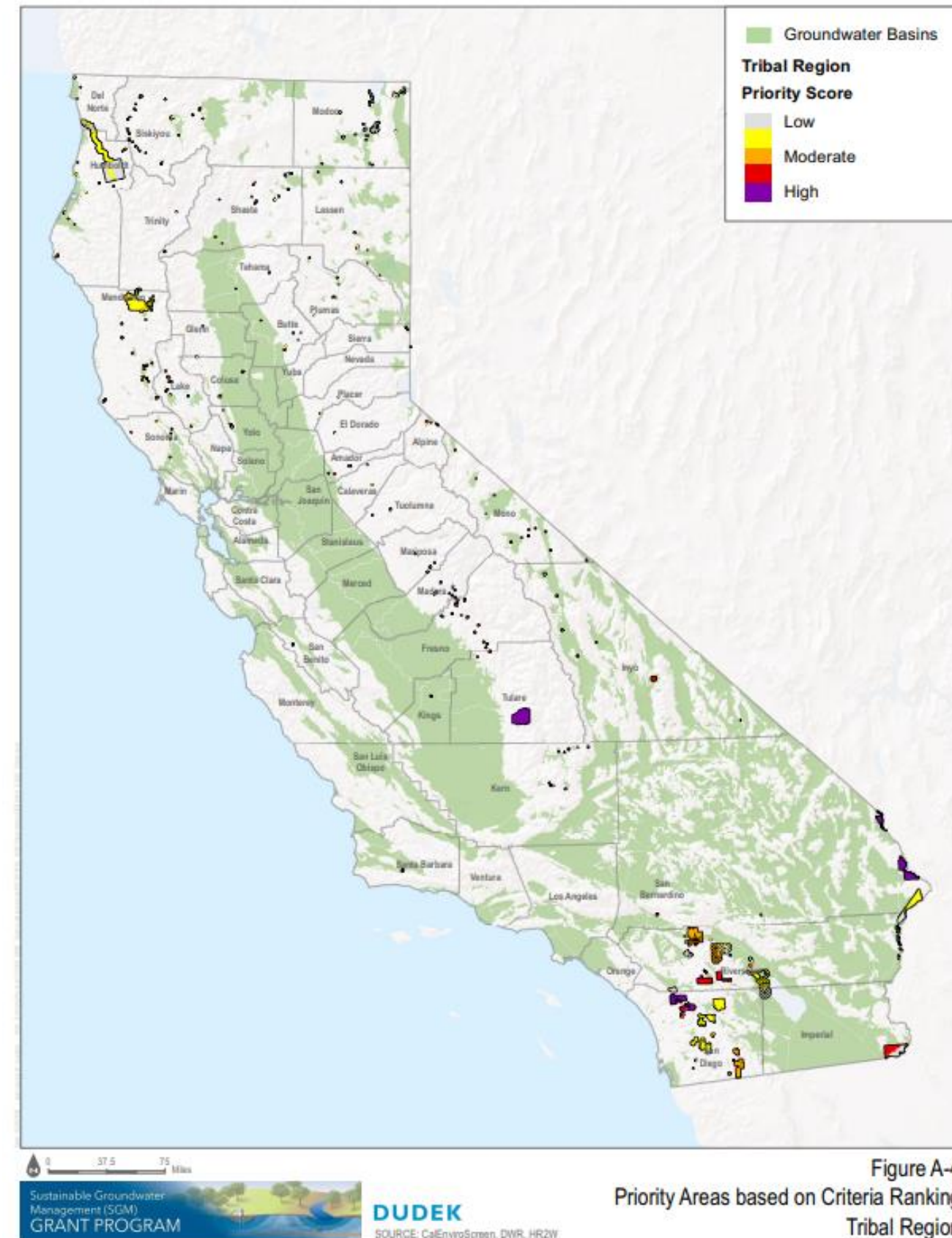


Figure A-4
Priority Areas based on Criteria Ranking
Tribal Region

5

Community Selection



PROP 68 TECHNICAL ASSISTANCE
PROGRAM FOR TRIBAL
GOVERNMENTS
AND UNDERREPRESENTED
COMMUNITIES

DUDEK

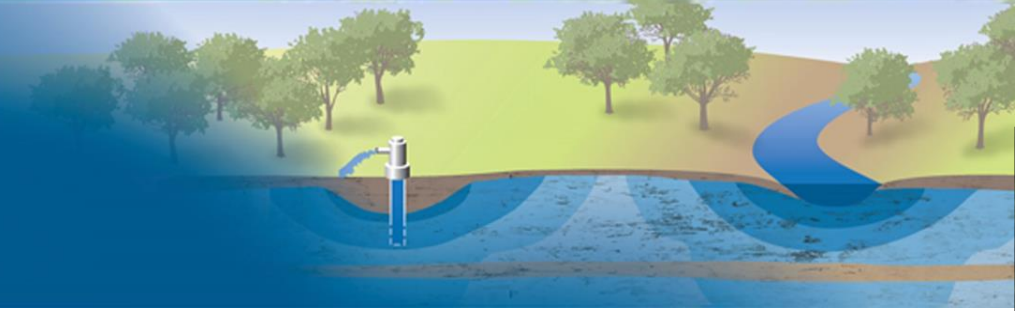
Records Review and Water System Representative Interviews



Project Team is conducting records searches and interviews to determine:

- **Water system background and development**
- **Service area demographic Information**
- **Water sources and water rights**
- **Groundwater basin information**
- **For groundwater wells:**
 - **Construction, extraction quantities, hydrographs, maintenance**
- **For water quality:**
 - **Contamination sources, compliance and violations, septic systems**
- **Backup water sources**

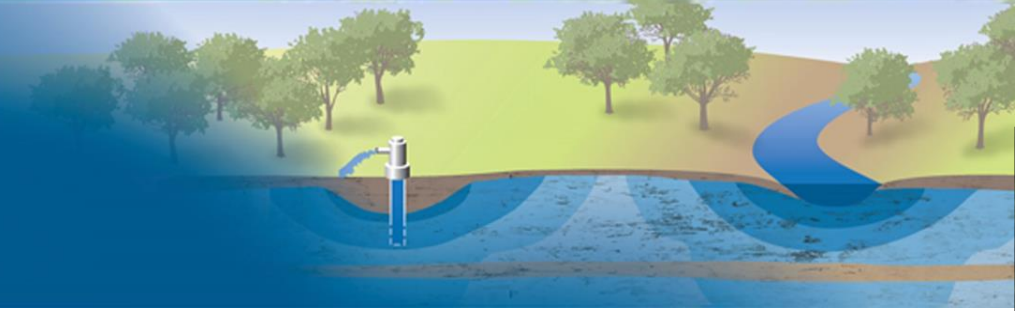
Site Reconnaissance and Evaluation



Project Team is conducting site reconnaissance and evaluation:

- Survey water system and connections
- Storage tanks and distribution condition
- Sample groundwater - analyze for potability (Title 22)
- Meet with water system operator
- For groundwater wells:
 - Record groundwater levels
 - Well and related equipment condition
 - Photographic documentation
 - Condition of pump and related appurtenances
 - Energy supply reliability

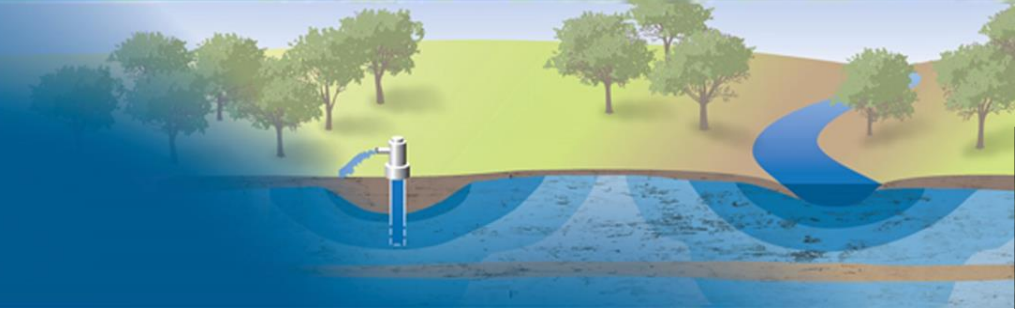
Preliminary Engineering Reports



Based on the records search, water system representative interview, and site reconnaissance, Project Team is preparing preliminary engineering reports documenting the results of all phases of the project, presenting project alternatives and recommending a preferred project alternative to ameliorate system problems.

The report will be designed for water system eligibility for various funding mechanisms.

Next Steps



- Heat Mapping - Identification of Priority Tribal and Underrepresented Communities * Updating continuously

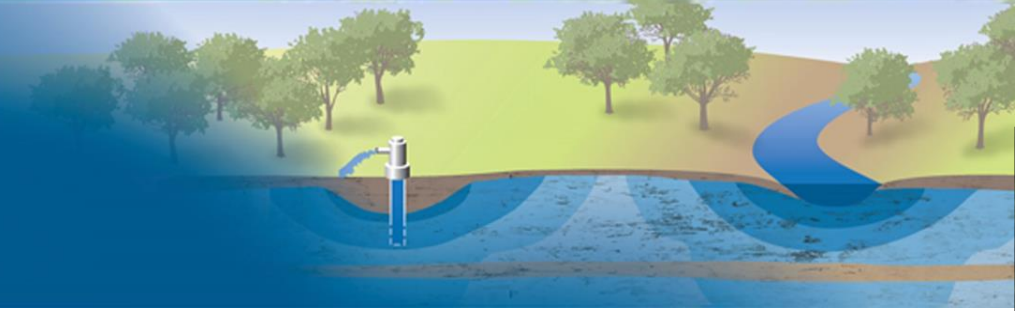
- Community/Water System Selection * Current Step

- Direct community outreach to discuss community/system needs and determine next steps for engagement* Current Step

- Coordinate with Tribal Governments and Communities on Listening Sessions, Assessments, Site Visits. * Current Step

- Community/Water System Preliminary Engineering Report Development * Current Step

Requests



The Project Team would like to hear from you on the Ranking Criteria and Heat Maps.

The Project Team is interested in engaging in listening sessions with Tribal Governments and Communities.

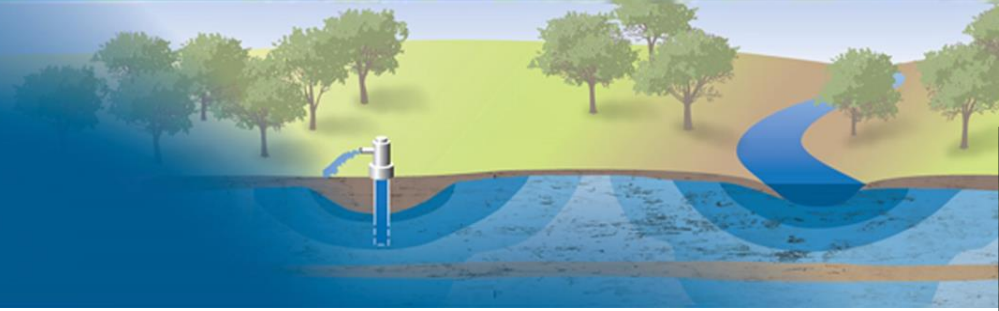
Project Team is would like to work with Tribal Governments and Communities on needs assessment and technical assistance.



PROP 68 TECHNICAL ASSISTANCE
PROGRAM FOR TRIBAL
GOVERNMENTS
AND UNDERREPRESENTED
COMMUNITIES

DUDEK

Survey



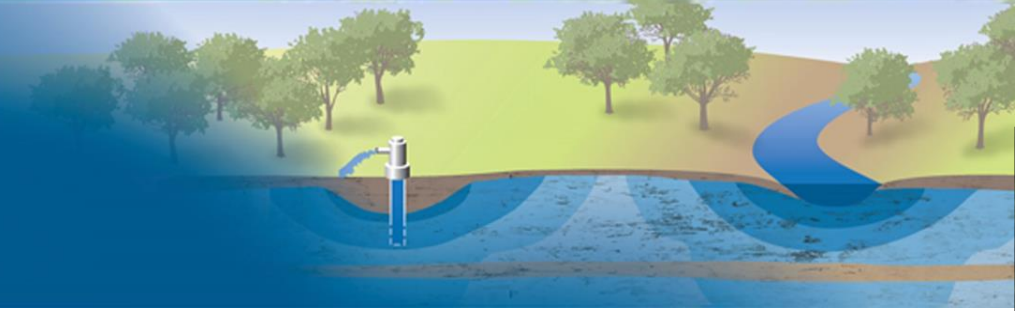
What values or concepts about water would like to see reflected in this Technical Assistance Program?

- Cultural practices**
- Holistic use of water**
- How tribes use water**
- Other – please describe**

On a scale of 1-5 (1 being the lowest, and 5 being the highest) please rate your tribe's relationship with DWR.

- 1 - Non-existent**
- 2 - Some communication but lacks interaction**
- 3 - Relationship is good, but could be better**
- 4 - Great relationship with DWR**

Survey



Are you interested in building or strengthening relationships with DWR?

Yes

No

Not sure

If yes, please briefly describe the best way that DWR can build or strengthen the relationship with your tribe (in-person interaction, attend local meetings, phone calls, other).

What types of water-related issues does your well or water system have?

Water quantity

Water quality

Not sure

PROP 68 TECHNICAL ASSISTANCE
PROGRAM FOR TRIBAL
GOVERNMENTS
AND UNDERREPRESENTED
COMMUNITIES

DUDEK

CONTACT US

SGM_TA@water.ca.gov

Derek.Cheung@water.ca.gov

jgray@dudek.com

mnaftaly@dudek.com



PROP 68 TECHNICAL ASSISTANCE
PROGRAM FOR TRIBAL
GOVERNMENTS
AND UNDERREPRESENTED
COMMUNITIES

DUDEK



Thank You!

Questions?

PROP 68 TECHNICAL ASSISTANCE
PROGRAM FOR TRIBAL
GOVERNMENTS
AND UNDERREPRESENTED
COMMUNITIES

DUDEK