

Ethylene Oxide and Risk in the Community of Laredo, TX



This Photo by Unknown Author is licensed under [CC BY-SA](https://creativecommons.org/licenses/by-sa/4.0/)



- EPA Region 6 Contact Information:
 - 800-887-6063 or 214-665-2760 (Outside of Region 6)
- EPA Website:
<https://www.epa.gov/eto/laredo>

Why we are here today

1

Pollution is increasing health risks in your community.

2

We are working to reduce this risk in three ways.

3

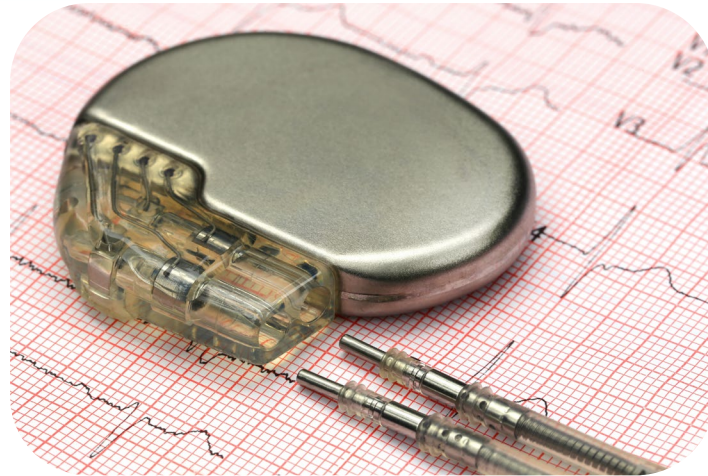
We want to hear from you.



What is Ethylene Oxide?

- **Gas**
- **Colorless**
- **Flammable**
- **Odorless**

*(in concentrations
we see in communities)*

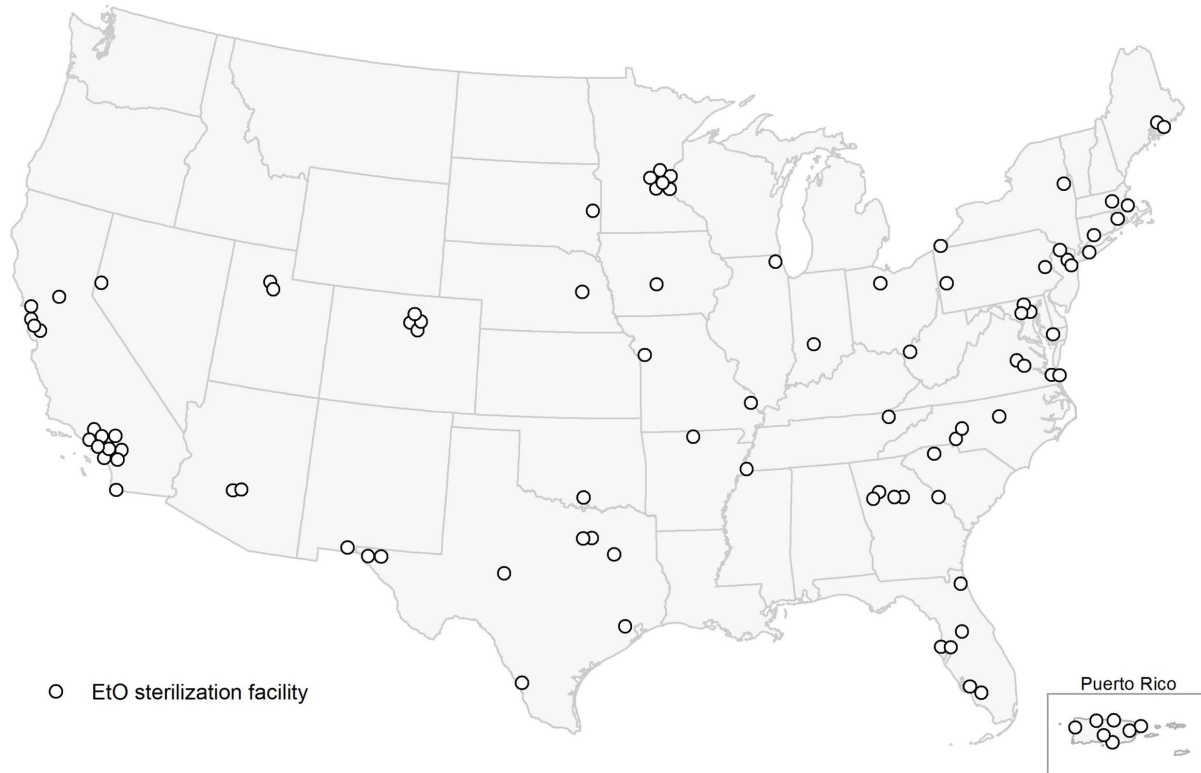


EtO Uses

- Makes Other Products
- Sterilizes



National Context



- Approximately **100** commercial sterilizers in the United States
- Midwest Sterilization is **one of 23** with the **highest risk**
- More information on all facilities at <https://www.epa.gov/eto>



Recent Steps Taken to Learn about Risk and Reduce It:

- July 2022: Complete analysis showing where, in which specific communities, risk is highest for people who live nearby.
- Continue to seek more immediate reductions of EtO coming out of facilities.

Previous work:

- 2016: Learn EtO is more dangerous when people breathe it in.
- 2018: Initial analysis showing that EtO might be causing risk near certain types of facilities.
- 2020-2022: Collect and verify data and complete analysis to understand more exactly where there is risk and why.

Current knowledge suggests these risks are not a concern

No indication of risk:

- From soil or water
- Acute or emergency health impacts
- From consumer use of products made with or sterilized with EtO



Over your lifetime

Breathing in EtO over
many years can cause
breast cancer and lymph
cancer.



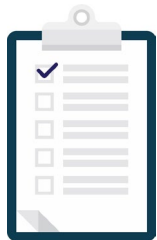
Special Considerations about Risk



Workers may be exposed at higher levels.



Children and babies may be at higher risk.



This risk assessment and the rule it supports are focused on community risk not worker risk.

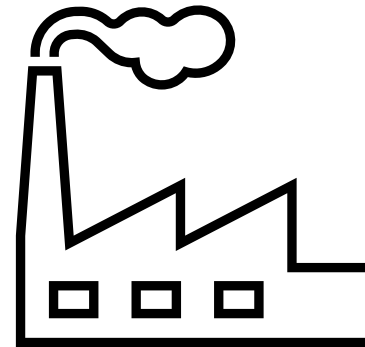
**Reducing EtO coming
out of facility is
the best way
to reduce risk.**



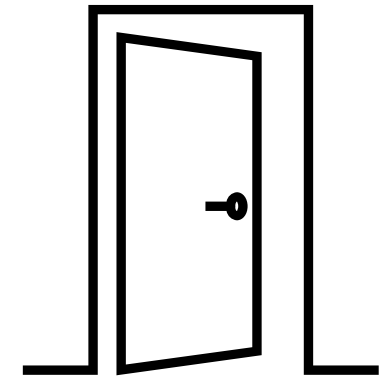
Where EtO Comes from at the Facility

There are two types of EtO emissions from facilities:

Controlled Emissions



Fugitive Emissions



In this community, the majority of the risk is being caused by fugitive emissions

Understanding Risk

How close?

How much?

How long?



For Updates and
to Learn More

<https://www.eto/laredo>



[This Photo](#) by Unknown Author is licensed under [CC BY-SA](#)

Location of Midwest Sterilization Corporation



EPA Headquarters Modeling Analysis

- EtO Uses
- Facility Processes
- Facility Equipment
- Weather
- Community Details

Modeling Analysis

**Maps Risk
Caused by EtO
from a Facility**

Midwest Sterilization Corporation Laredo, Texas

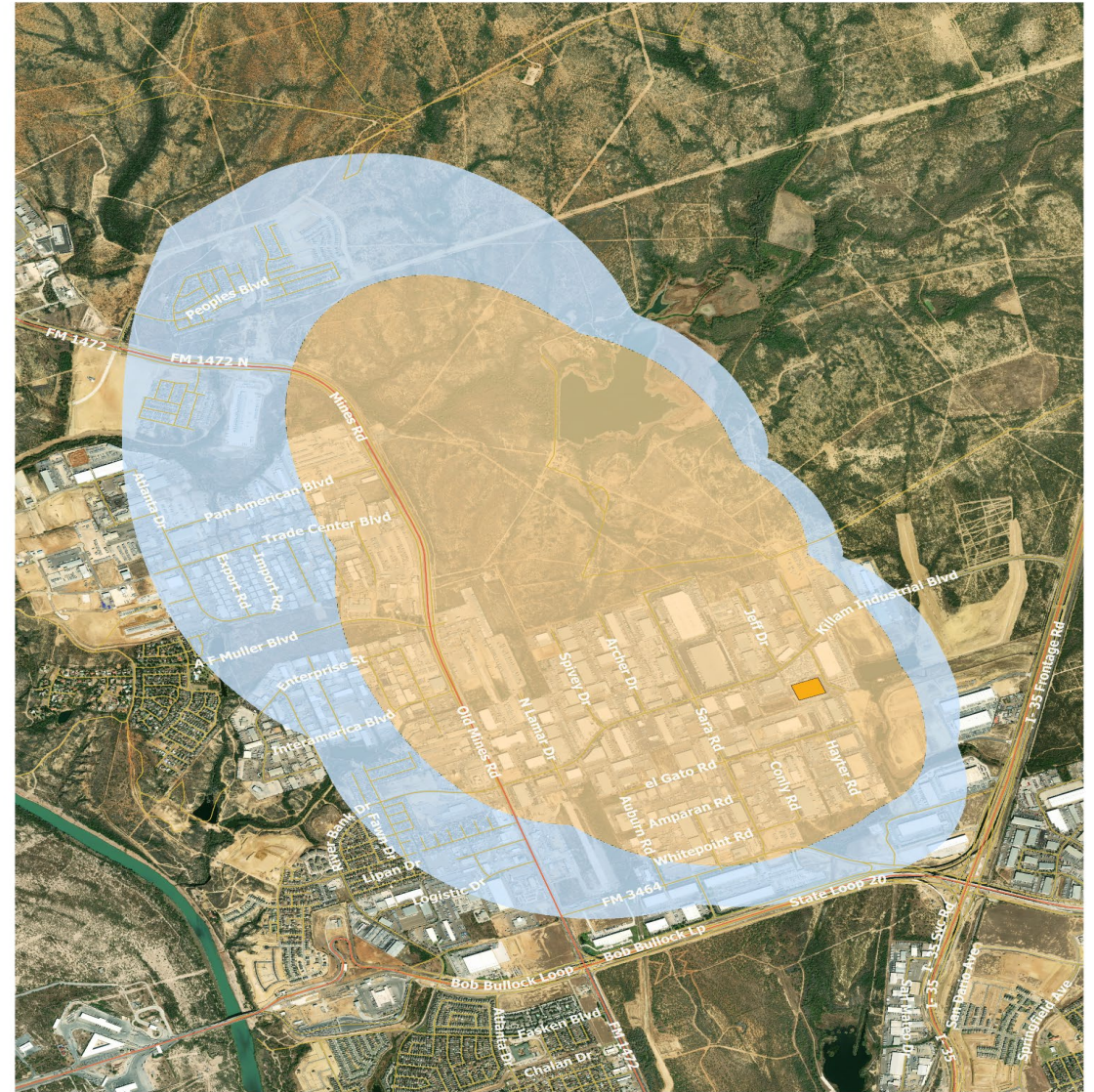
Maximum Risk Level: 100/Million:

Blue: Estimated lifetime cancer risks of 100 in a million.

Lifetime cancer risk - breathe air containing EtO at the level estimated at that location for 24 hours a day, every day for 70 years.

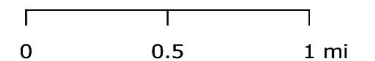
This estimated risk is in addition to cancer risk from other causes.

For more information and to view this map online: <https://www.epa.gov/eto/laredo>



EtO Sterilizer Facility
Non-Residential Area

Lifetime Residential Cancer Risk
(in a million)



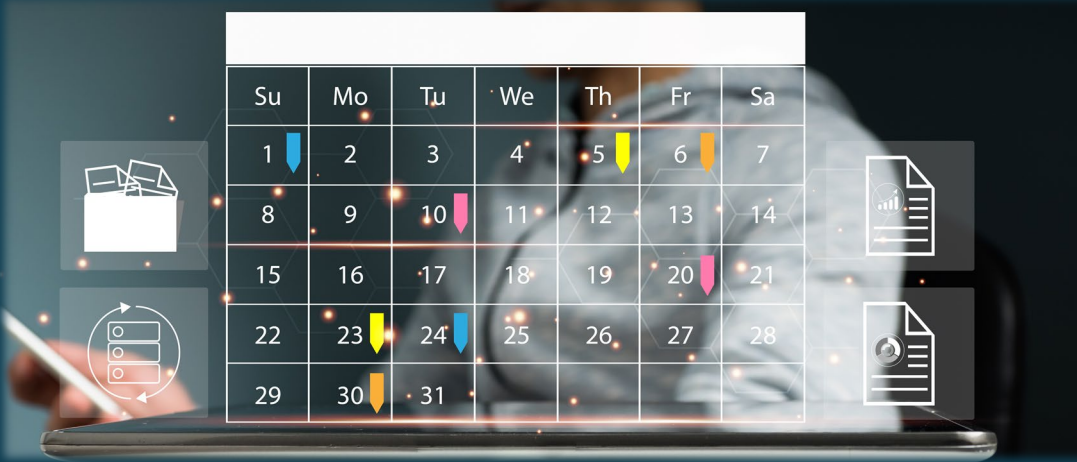
Work Conducted/Needed

- Some approved emission controls have been installed by the facility.
- Additional emissions controls are necessary.



Timeline

- New regulation to be proposed this year.
- The public comment period will last 60 days.
- Final rule is expected in 2023.
- Once the rule is final, facilities typically have 3 years to comply with new requirements.
- Additional resources on the comment process are available here:
<https://www.epa.gov/eto/comment>



Su	Mo	Tu	We	Th	Fr	Sa
1	2	3	4	5	6	7
8	9	10	11	12	13	14
15	16	17	18	19	20	21
22	23	24	25	26	27	28
29	30	31				

Key Points

EPA has learned that EtO is causing health risk in your community.

We are working to reduce this risk by:

1. Working across government and industry to reduce EtO coming from MSC.
2. We are updating air pollution regulations to be more protective of your health.
3. We are sharing these risk results with you, so you have the same information we have.

- Proceed to microphone or if you do not wish to speak at a microphone please write your question on the comment card and pass to any EPA representative. Questions provided on the cards will be read aloud by our moderator and responded to during the Q & A session.
- You may also submit questions to EPA via eto@epa.gov and EPA will respond via email after the meeting.



Next Steps



- Go to www.epa.gov/eto/laredo to learn more
- You can find more information about EtO at www.epa.gov/eto
- Sign up on the “Interested Individuals” list at the front to receive updates.