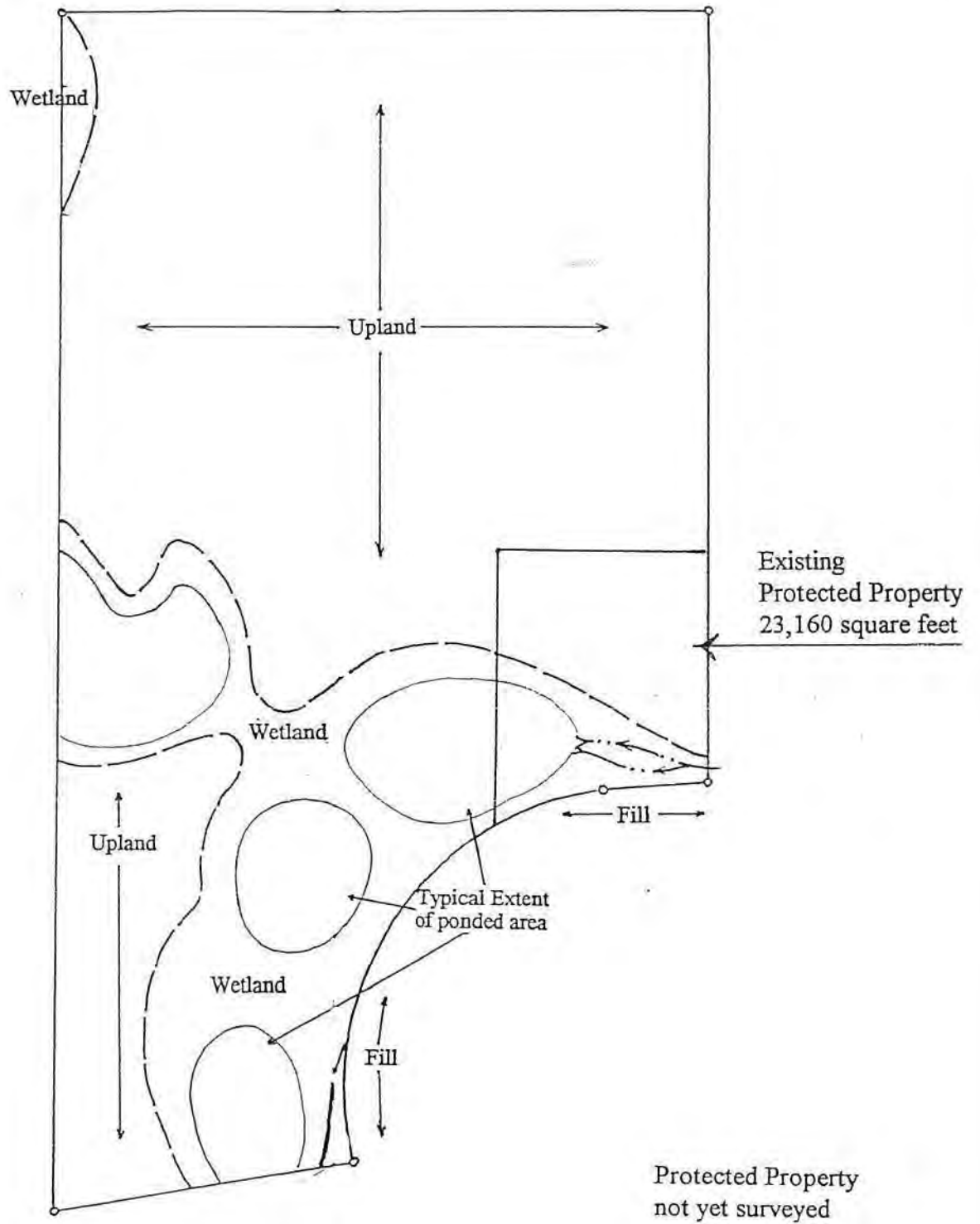


**STOKES
ENVIRONMENTAL
ASSOCIATES, LTD.**

TOPOGRAPHIC MAP

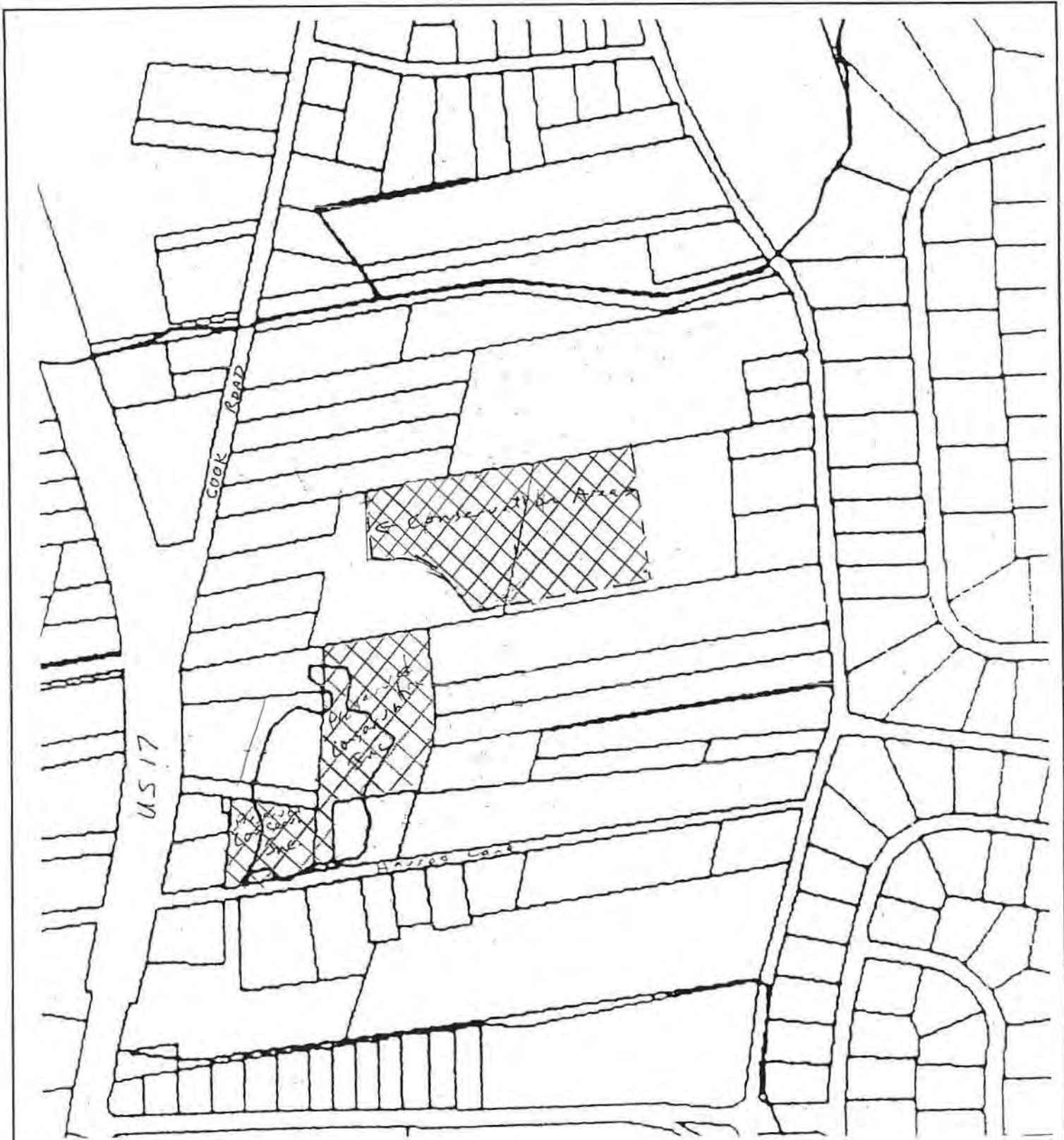
LOCALITY: Cook Road - Ballfield Mitigation Site
 York County, Virginia
 DATE: 1983, revised/inspected 1986
 SCALE: 1" = 2,000'
 SOURCE: Yorktown Quadrangle, Virginia 7.5 Minute Series



**STOKES
ENVIRONMENTAL
ASSOCIATES, LTD.**

WETLAND MAP

PROJECT NAME: COOK ROAD MITIGATION SITE
 DATE: July 1999
 SCALE: 1"=100'
 SOURCE: DAB



Cross hatched areas have been, or are available for preservation

**STOKES
ENVIRONMENTAL
ASSOCIATES, LTD.**

PRESERVATION AREAS SITE MAP

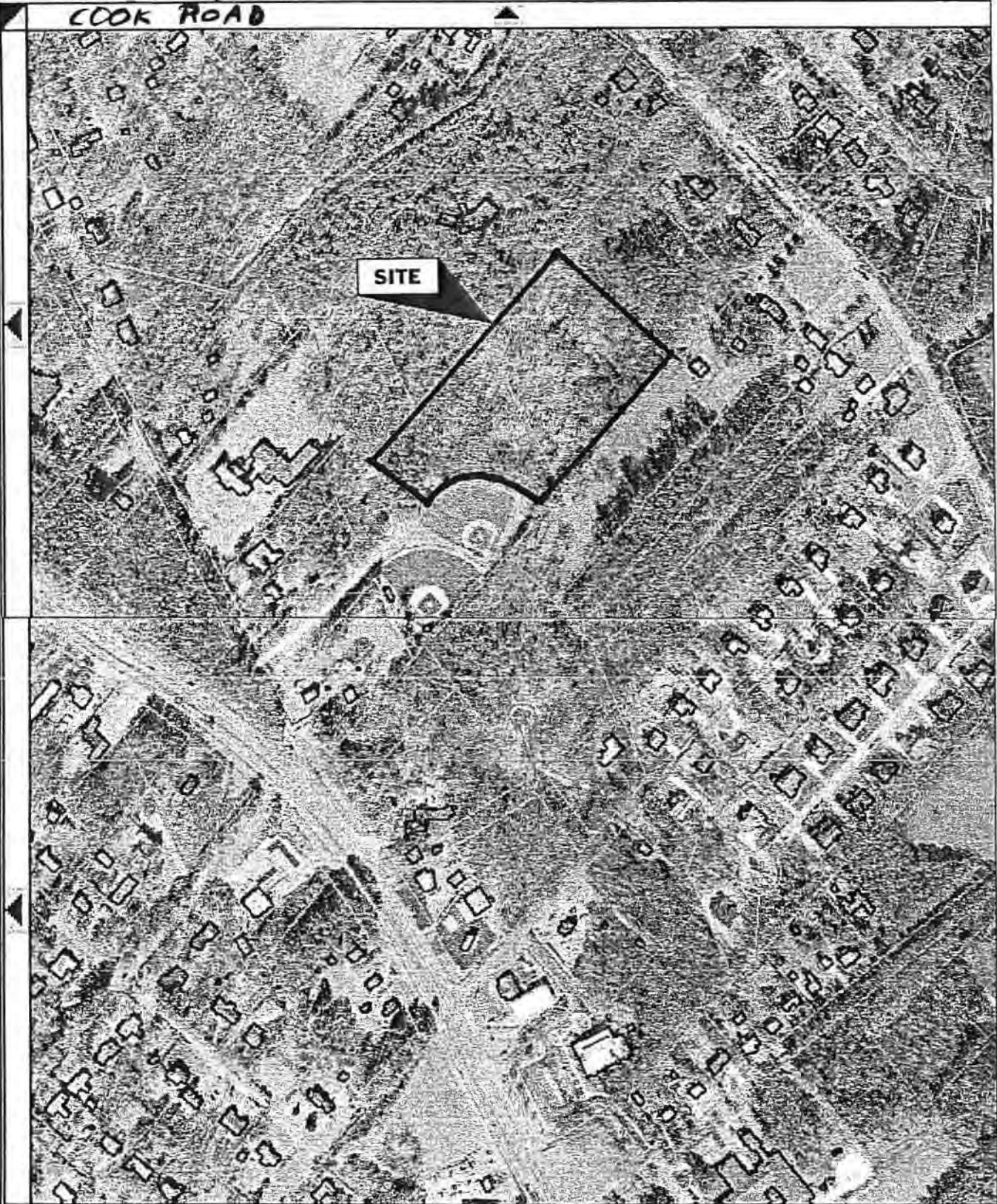
Grafton Pond Complex

SCALE: 1" = 400' approximate
SOURCE: York County Grafton Pond Study Map

Clicking the map will: **Select Parcel**

Select View: **Default View**

COOK ROAD



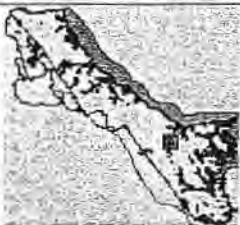
Click Arrows On Map Edge To Pan Map

Zoom In

Zoom Out

Default View

Full Extent



Search By Address

Search By PIN

Search By Owner

Find Intersection

Clear Selection

Print Preview

Setup Options

Help

Layer Setup **Apply**

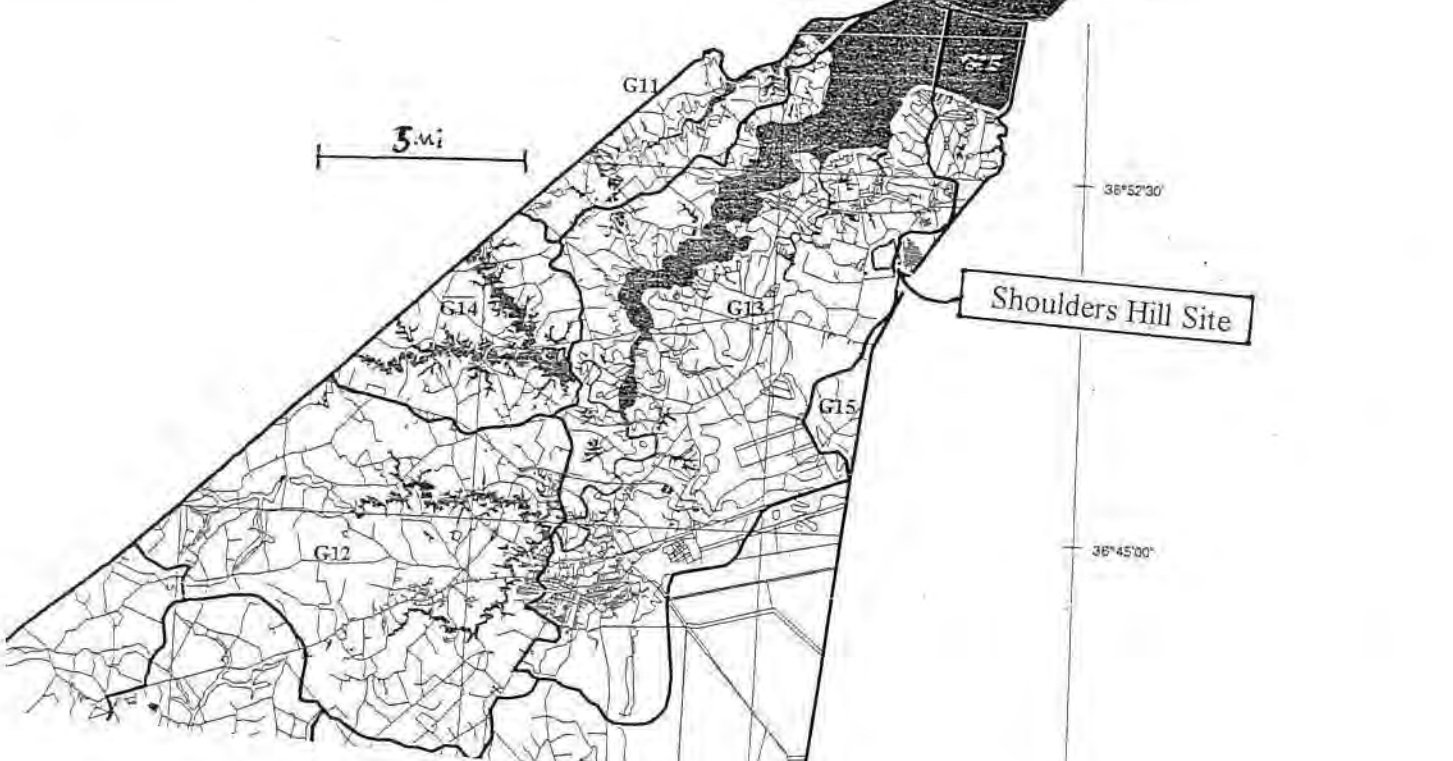
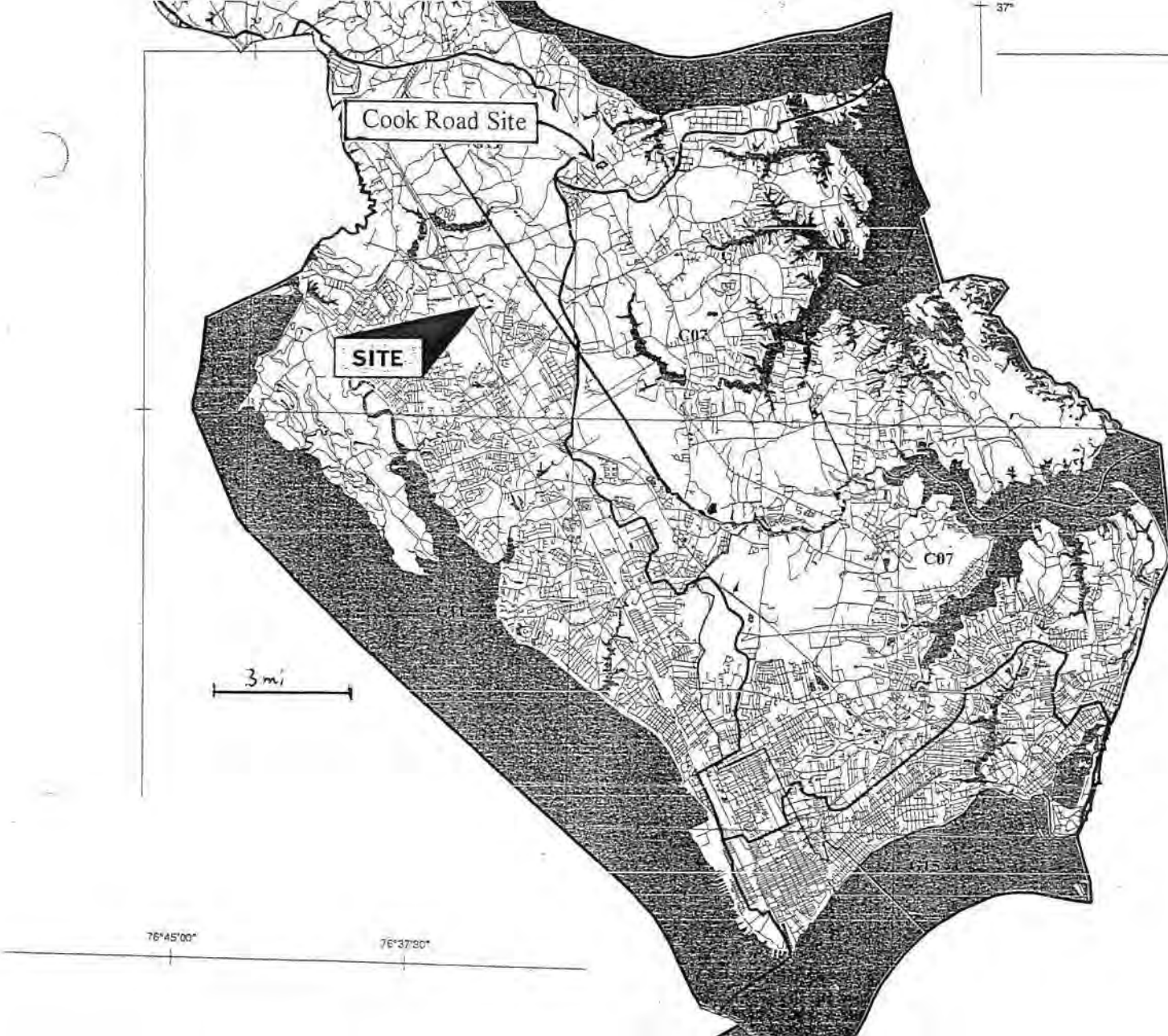
Check boxes are only available at visible scales

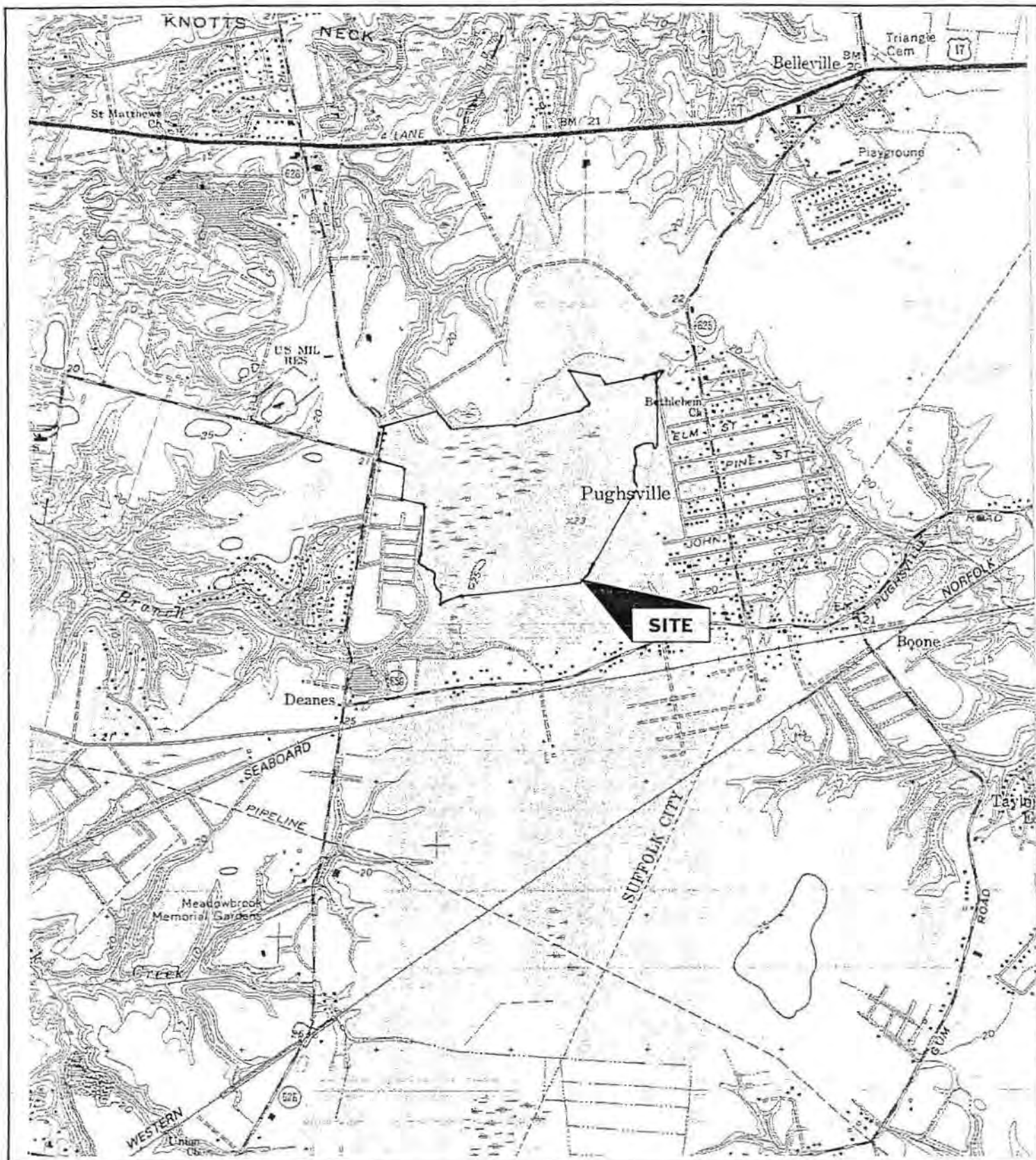
Dimensions

AE

Street Names

AE

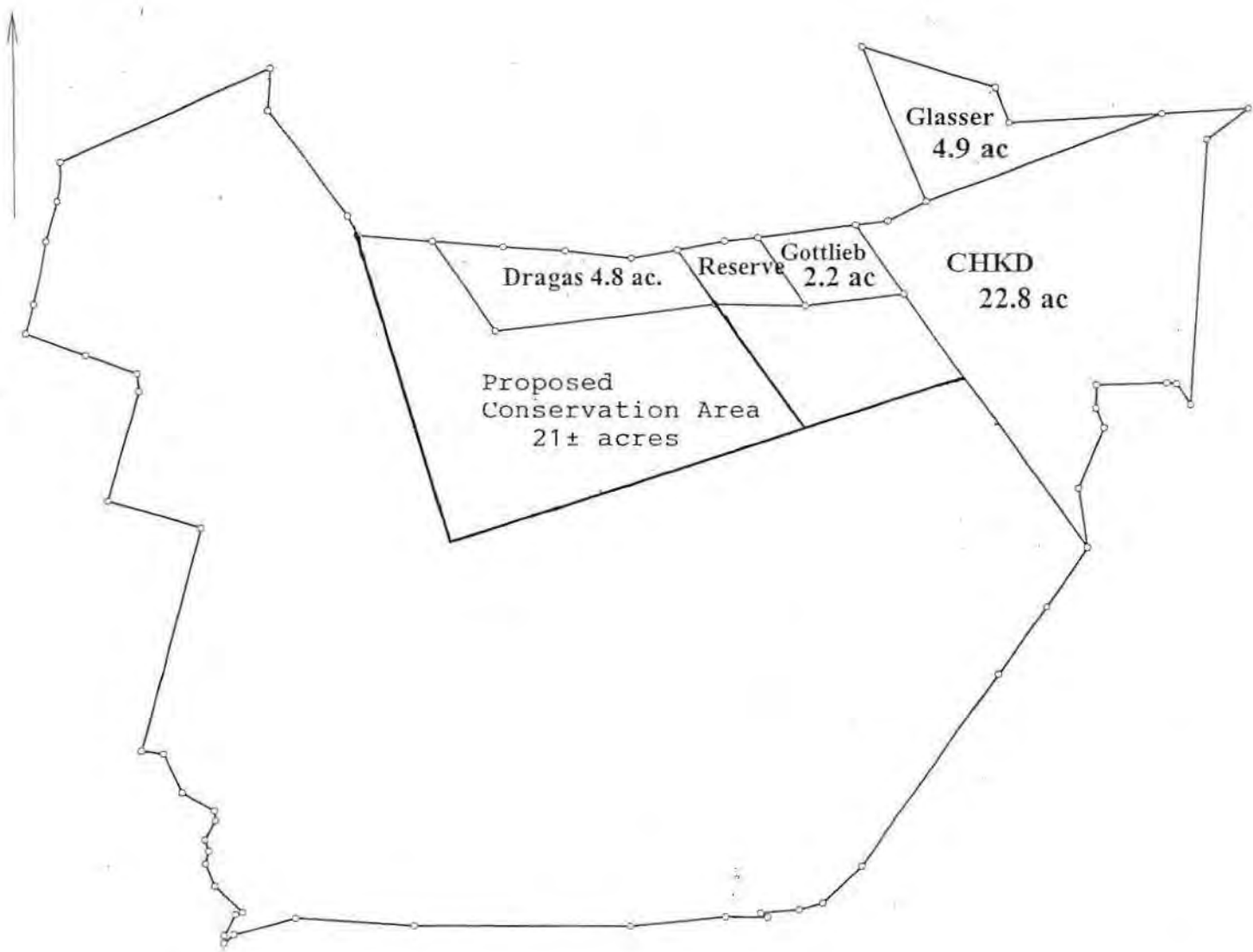




**STOKES
ENVIRONMENTAL
ASSOCIATES, LTD.**

TOPOGRAPHIC MAP

Shoulders Hill Mitigation Site
 LOCALITY: Suffolk, Virginia
 DATE: 1965, revised/inspected 1986
 SCALE: 1" = 2,000'
 SOURCE: Bowers Hill Quadrangle, Virginia 7.5 Minute Series



Title: Shoulders Hill Preservation Site		Date: 05-16-2000
Scale: 1 inch = 600 feet	File: Shoulders All Sites.des	