



# EJ Government-to-Government (EJG2G) Program

## Pre-application Assistance Webinar

EPA-R-OEJECR-OCS-23-02  
Office of Environmental Justice & External Civil Rights  
January 26, 2023

# Webinar Agenda

- A. Zoom Housekeeping, EPA Staff and Interpreters
- B. Purpose of the EJG2G program
- C. Definition of a CBO
- D. Funding & Award Information (Section II)
- E. Eligibility (Section III)
- F. Funding Opportunity Description (Section I)
- G. Contents of a Full Application Package (Section IV)
- H. Evaluation Criteria (Section V)
- I. General Q & A

# Zoom Meeting Best Practices

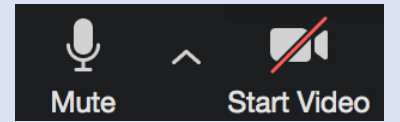
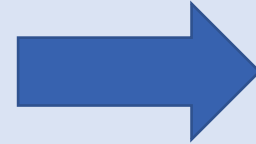


- *Use “raise hand”* or chat feature to indicate you would like to comment/speak
- Turn off microphone when you are not talking (Mute)

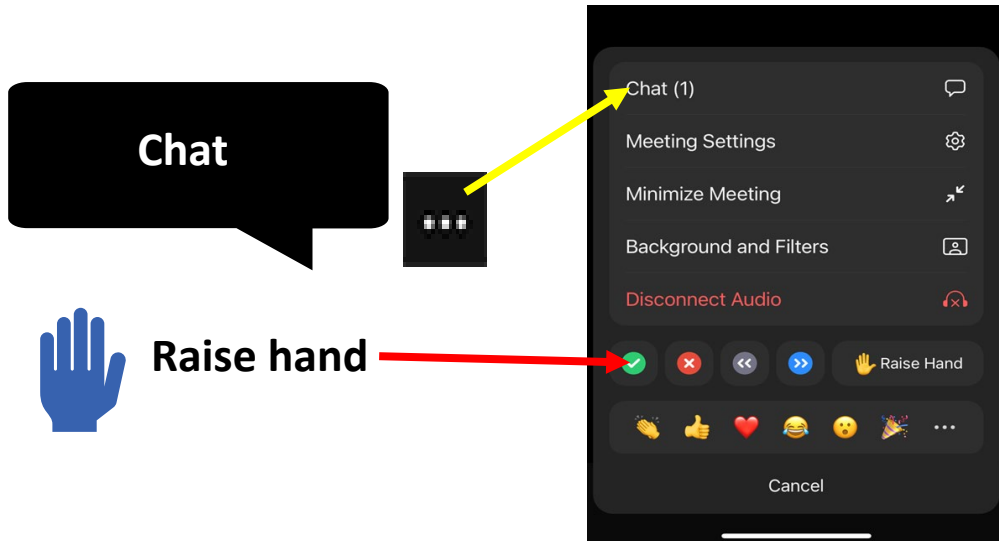
# Questions



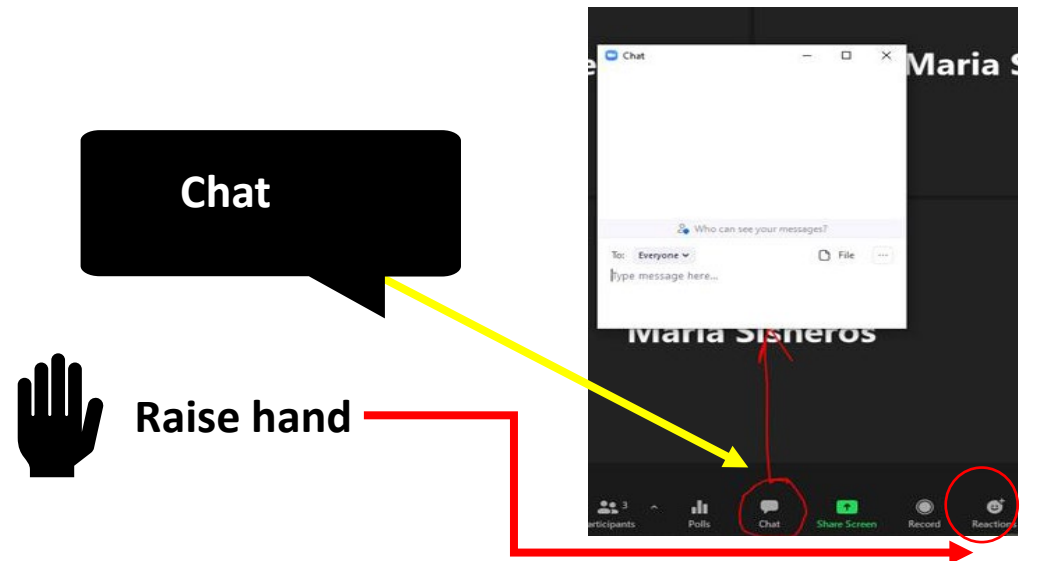
Use the toolbar to unmute



## Cellphone



## Computer



# Zoom Housekeeping

- A. This meeting is being recorded and will be posted on the [EJG2G](#) webpage
- B. Remember to keep your line muted if you're not asking a question
- C. Interpreter Channels for Spanish Speakers
- D. To ask Questions, please:
  - Raise your Hand using the Zoom Controls, then unmute when called on
  - Those with raised hands will be called on first before we go to the Chat
  - Option to type your question into the Chat
- E. Quick Introductions of EPA staff (OEJECR, OGC, and OGD) and Interpreters

# Topics to be covered in this section:

- Purpose of the EJG2G program
- Definition of a CBO
- Funding Totals and Award Information
- Set Asides
- Tribes Located in Remote Areas
- Eligibility – Who can apply directly for an EJG2G award
- Partnerships (IRA and/or Traditional EJ partnerships)
- SAM.gov and Grants.gov registration requirement

# Purpose of EJG2G Program

## **I. The newly named EJG2G Program features expanded eligibility to applicants from all levels of government:**

- a. States, tribal governments, local governments, US Territories, Freely Associated States and Puerto Rico.

## **II. Direct funding to Governmental Entities**

- a. The EJG2G program provides funding to governmental entities in support of the integration of EJ goals at all levels of government.
- b. If selected, an EPA Project Officer will plan and meet with you regularly.

## **III. Partnerships and coalition-building**

- a. Applicants must propose projects where they collaborate with community stakeholders (e.g., community-based nonprofit organizations (CBOs), local businesses and industry, local government, medical service providers, academia, etc.).
- b. Applicants from states, federally recognized tribal governments, and local governments must propose projects where they collaborate with **at least one CBO**.

# Purpose of EJG2G Program (cont.)

## III. Projects addressing disproportionate environmental/public health issues

- a. Projects should support and/or create model government activities that lead to measurable environmental or public health results in communities disproportionately burdened by environmental harms and risks.
- b. Models should leverage or utilize existing resources or assets of applicants to develop key tools and processes that integrate EJ considerations into all levels of government and government programs.
- c. Proposals must include relevant information such as demographics, geographic location, and community history.
- d. EPA **strongly** encourages the use of EPA's [EJSCREEN tool](#) (or other EJ- based mapping tool) to help you characterize and describe your target community. Data from other sources (e.g., studies, census, and third-party reports) can also be included to give a more complete picture of the impacted communities and populations.
- e. EJSCREEN Office Hours, Training Schedule, and Past Recordings are available here:  
<https://www.epa.gov/ejscreen/ejscreen-office-hours-training>



# Funding Opportunity (Section I)

pages 2 – 13 of the RFA

## I. Definition of a Community Based Nonprofit Organization (CBO):

- a. a public or private nonprofit organization that supports and/or represents a community and/or certain populations within a community through engagement, education, and other related services provided to individual community residents and community stakeholders. A “community” can be characterized by a particular geographic area and/or by the relationships among members with similar interests and can be characterized as part of a broader national or regional community where organizations can be focused on the needs of urban, rural, and/or tribal areas, farmworkers, displaced workers, children with high levels of lead, people with asthma, subsistence fishers, and other similar groups.

**CBOs are ineligible for direct funding under this RFA. CBOs may receive funding from an eligible applicant as a subaward.**

# Funding Opportunity (Section I)

pages 2 – 13 of the RFA

## **I. Inflation Reduction Act (IRA) funding**

- a. 2022 Inflation Reduction Act (IRA) created the Environmental and Climate Justice block grant program in section 138 of the Clean Air Act (CAA) and provided EPA with \$2.8 billion in grant funding for the program for projects to benefit disadvantaged communities.

## **II. Consolidated Appropriations Act, 2022**

- a. Congress provided EPA with both funding and expanded authority to further environmental justice through financial assistance programs in the Consolidated Appropriations Act, 2022 (Public Law 117-103), which provided funding for environmental justice implementation and training grants.

# Funding & Award Information (Section II)

pages 13 – 15 of RFA

## I. Total Funding

- a. Approximately \$70 million available for approximately 70 projects nationwide up to \$1 million per award

## II. Funding Breakdown/Number of Awards / Funding Tracks

- a. \$40,000,000 of Inflation Reduction Act (IRA) appropriations for local governments partnering with CBOs and tribal governments partnering with CBOs
- b. \$30,000,000 of annual appropriations for OEJCR for States partnering with CBOs and U.S. Territories, Freely Associated States, Puerto Rico, state recognized tribes, and tribes in remote areas (federally recognized or state recognized)

## III. Length of Project & Other Award Details

- a. Project Period is 3 years
- b. Applicants should plan for an October 1, 2023, start date
- c. All funds must be drawn down by the end of the 3-year project period
  - a. **No extensions are allowed!! (This is a statutory limitation)**
- d. Cooperative Agreements – substantial EPA involvement & oversight

# Funding & Award Information (Section II)

pages 13 – 15 of RFA

## I. Set Asides

- a. States – Approximately \$20M of annual appropriations funds
- b. Federally Recognized Tribal Governments – Approximately \$20M of CAA 138 IRA funds
- c. Local Government – Approximately \$20M of CAA 138 IRA funds
- d. U.S. Territories, Freely Associated States, Puerto Rico, State Recognized Tribal Governments, and Remote Tribal Governments (federally recognized or state recognized) – Approximately \$10M of annual appropriations funds

# Funding & Award Information (Section II)

pages 13 – 15 of RFA

## I. Tribes located in Remote Areas

- a. Defined as federally recognized or state recognized tribal governments located in rural areas with limited or no access to CBOs to partner with. Remote areas may also be characterized by limited access to public or private resources commonly found in metropolitan areas. Applicants must explain in their application why they qualify for remote status.
- b. Remote status is a subset of the special consideration for rural areas under this RFA.
- c. Remote federally recognized tribes that apply in partnership with CBOs will be placed in the federally recognized tribal government track featuring \$20 million of IRA funding.
- d. Remote state recognized tribes that that apply in partnership with CBOs are only eligible for the remote tribal government track featuring \$10 million in EPA appropriations funding. **Note: State recognized tribal governments are only eligible for the remote tribal government track.**

# Eligibility (Section III)

pages 15 – 19 of RFA

## I. Who is eligible to apply to the EJG2G program?

- a. a partnership between – a state and a CBO
- b. a partnership between – a federally recognized tribal government and a CBO
- c. a partnership between – local governments and a CBO
- d. Puerto Rico
- e. U.S. Territories
- f. Freely Associated States
- g. Tribal governments in remote areas (federally recognized or state recognized)
- h. State recognized tribes

***NOTE - The EJG2G opportunity is only for governmental entities to apply to directly***

# Eligibility (Section III)

pages 15 – 19 of RFA

- II. **Who is ineligible to apply directly?** (but applicants may collaborate with these entities)
  - a. Public and Nonprofit institutions of higher education, including state and tribal colleges and universities even if they are instrumentalities of state or tribal government
  - b. Hospitals and medical facilities even if they are instrumentalities of state, tribal or local governments
  - c. Non-profit organizations
  - d. For-profit businesses
  - e. Faith-based organizations and local houses of worships
  - f. Civic and philanthropic organizations
  - g. International Organizations
  - h. Individuals
- III. Although ineligible to apply directly, these entities can be partners on EJG2G projects via financial partnerships (subawards or contracts) or non-financial partnerships (in-kind work)

# Eligibility (Section III)

pages 15 – 19 of RFA

- I. Partnerships with CBOs (required) and other community stakeholders are strongly encouraged
  - a. A partnership between federally recognized tribal governments and a CBOs is required in the EJG2G Program
  - b. A partnership between local governments and CBOs is required in the EJG2G Program
  - c. A partnership between states and CBOs is required in the EJG2G Program
  - d. For all other applicants, partnerships are not required but are expected in the EJG2G Program
  - e. All Partnerships documented in the workplan should be accompanied with a Letter of Commitment



# Eligibility (Section III)

pages 15 – 19 of RFA

## I. Required Partnerships

- a. IRA-qualifying partnerships (FOR ELIGIBILITY PURPOSES) = partnerships where federally recognized tribal governments and local governments provide a subaward to the partnering CBO.
  - i. The Inflation Reduction Act legislation states that federally recognized tribal government partnerships with CBOs and local government partnerships with CBOs can receive IRA funds **(see RFA for more details)**
- b. Other qualifying partnerships (FOR ELIGIBILITY PURPOSES) = partnerships where states provide a subaward to the partnering CBO.
  - I. The consolidated appropriations act allows for funding and expanded authority for state partnerships with CBOs. **(see RFA for more details)**

# Eligibility (Section III)

pages 15 – 19 of RFA

## II. Other Types of Partnerships

### a. Traditional EJ Partnerships

- i. Financial relationship with CBOs (i.e., subawards or contracts)
- ii. Non-financial relationships with CBOs where a subaward is not present (i.e., in-kind services)
- iii. Financial relationships with non-CBOs (i.e., subawards or contracts)
- iv. Non-financial relationships with non-CBOs (i.e., in-kind services)

### b. Both IRA-qualifying partnerships, other qualifying partnerships, and Traditional EJ partnerships are encouraged in the EJG2G program

### c. EPA strongly recommends that applicants have THREE partners from THREE different stakeholder groups. **A partnership with a CBO counts as one stakeholder group.**

# Registering on SAM.gov and Grants.gov

pages 19 – 22 of the RFA

## **I. Applications must be submitted through Grants.gov**

- a. Applicants must register on SAM.gov and Grants.gov before you will be able to submit an application. These registrations are totally free!!
- b. If you have never applied to a federal grant before, you will need you will need to create an account using login.gov to complete your SAM.gov registration.. The process for entity registration includes obtaining an Unique Entity ID (UEI), a 12-character alphanumeric ID assigned an entity by SAM.gov, and requires assertions, representations and certifications, and other information about your organization.

## **II. Finalizing registration on SAM.gov and Grants.gov can take more than a month!!**

## **III. Do not wait!! Start registration now and/or check that your registrations are active and current**

# Questions on...

- Purpose of the EJG2G program
- Definition of a CBO
- Funding Totals and Award Information
- Set Asides
- Tribes Located in Remote Areas
- Eligibility – Who can apply directly for an EJG2G award
- Partnerships (IRA and/or Traditional EJ partnerships)
- SAM.gov and Grants.gov Requirement

# **Topics to be covered in this section:**

- Types of Eligible Projects and Project Activities
- Special Considerations
- Ineligible Activities

# Funding Opportunity (Section I) cont.

pages 2 – 13 of the RFA

## I. Types of Eligible Project Activities (not all inclusive):

- Research (incidental to an eligible project) and public education
- small-scale construction and demolition work (if needed for project)
- small-scale clean-ups
- installations of air or water filtration systems
- Disposal and energy recovery training
- building refurbishments that reduce greenhouse gas emissions and other pollutants
- mitigation and/or monitoring of sources of pollution of pollution
- remediation of lead or asbestos
- workforce development to support low and zero emission and resilient technologies that reduce greenhouse gas
- community revitalization planning in support of climate resiliency and adaptation
- efforts to improve equitable transportation and mobility including through efforts to address barriers of cost and safety related to walking, bicycling, and public transit in order to reduce air pollution
- development of disaster preparedness plans

# Funding Opportunity (Section I) cont.

pages 2 – 13 of the RFA

## I. 2023 Special Considerations and Priorities\*:

1. Projects addressing Climate Change, Disaster Resiliency, and/or Emergency Preparedness
2. Rural areas
  - Local areas with populations of 50,000 or less that have limited access to resources commonly found in metro areas
  - Community Network areas selected by the Rural Partners Network (See [rural.gov](https://www.rural.gov) for a complete list of communities)
  - Coal and Energy Communities (See [energycommunities.gov](https://www.energycommunities.gov) for a complete list of communities)
  - Applicants claiming rural status must provide sufficient detail (census data, population figures, descriptions of local resources, etc.) for EPA to validate the rural status of the underserved community.
3. [Health Impact Assessments](#) (HIA)
  - Projects that seek to determine the potential effects of a proposed environmental decision on the health of underserved and vulnerable communities and the distribution of those effects within the communities
  - Applicants proposing HIAs will be expected to lead and coordinate the HIA along with their partners. EPA staff may provide technical advice but will not lead implementation of the project or HIA.

*\*The special considerations listed above will only be considered as an “other factor” during selection decisions. Applicants do not get “extra” points for addressing one or more of the special considerations*

# Ineligible Activities (Section I)

pages 2 – 13 of the RFA

- Lobbying as restricted in 2 CFR 200.450.
- Legal advice, services, or representation
- Travel for federal employees
- Projects or programs that are not eligible for funding under section 138(b)(2) of the Clean Air Act or the environmental justice implementation and training grant authority in EPA's Fiscal Year 2022 Appropriation Act, Public Law 117-103.
  - (e.g.) projects that are not related to the environment and/or environmental issues



# Questions on...

- Types of Eligible Projects and Project Activities
- Special Considerations
- Ineligible Activities

# Topics to be covered in this section:

- Contents of an Application Package
- Evaluation Criteria
- Timeline

# Contents of an Application Package (Section IV)

## **Mandatory Forms and Documents:**

- 1) Application for Federal Assistance (SF-424)
- 2) Budget Information for Non-Construction Programs (SF-424A)
- 3) EPA Key Contacts Form 5700-54
- 4) EPA Form 4700-4 Preaward Compliance Review Report
- 5) Project Narrative Attachment Form for the Workplan (18-page limit)

## **Use Other Attachments Form for the following additional mandatory documents:**

- Itemized Budget Sheet (optional template in the Appendices)
- Environmental Results / Logic Model
- Letters of Commitment / Partnership Letters
- Resumes of the Project Manager (PM) and other key personnel

# Evaluation Criteria (Section V)

- **Each application passing Threshold Eligibility will be reviewed and scored by a review panel**
- **100 points maximum**
- **5 overarching Evaluation Criterion**
  - Program Objectives
  - Project Activities / Milestone Schedule / Detailed Budget Narrative
  - Environmental Results
  - Programmatic Capability
  - Past Performance

# Evaluation Criteria (Section V) cont.

- **1.0 Program Objectives (38 points)**
  - Project Summary Page (2 points)
  - Disproportionate Environmental and Public Health Issues Impacting Underserved Communities (12 points)
  - Organization's Recent Efforts to Directly Support Underserved Communities (12 points)
  - Project Linkages (2 points)
  - Partner and Collaborate (10 points)

# Evaluation Criteria (Section V) cont.

- **2.0 Project Activities / Milestone Schedule / Budget (28 points)**
  - Project Activities (12 points)
  - Milestone Schedule (4 points)
  - Itemized Budget Sheet / Budget Narrative (12 points)
    - Attach itemized budget sheet and budget narrative using the Other Attachments form
    - **States, federally recognized tribes, and local governments are strongly encouraged to budget a minimum of 20% of their proposed budget for partnering CBOs.**

NOTE – Budgets will be evaluated for reasonableness, allowability, and cost effectiveness

# Evaluation Criteria (Section V) cont.

- **3.0 Environmental Results – Outputs, Outcomes & Performance Measurement Plan (18 points)**
  - Environmental Results - Outputs/Outcomes (10 points)
  - Performance Measurement Plan (4 points)
  - Sustainability Plan and Environmental Justice Integration (4 points)

# Evaluation Criteria (Section V) cont.

- **4.0 Programmatic Capability (10 points)**
  - Organizational Experience (4 points)
  - Staff Experience/Qualifications of Project Manager (PM) (4 points)
    - It is not sufficient to only submit resumes and get full points here...
    - You should expound here in your narrative and use the resumes to support what you describe
  - Expenditure of Awarded Grant Funds (2 points)



# Evaluation Criteria (Section V) cont.

- **5.0 Past Performance (6 points)**
  - List of Past federal and/or non-federal grants (3 points)
    - Grants within last 3 years only
    - List no more than 5 agreements
    - Ideally list grants similar in size and scope to the EJG2G awards
    - **DO NOT list contracts**
  - Reporting History (3 points)
    - Description of your history meeting reporting requirements

# Evaluation Criteria (Section V) cont.

**Other Factors** - In addition to the final scores and ranks, the selection official may use the factors listed below to make final selection determinations amongst high-ranking applications:

- Special Considerations (Climate Change, Rural Areas, and/or Health Impact Assessments)
- Geographic Diversity
- EPA Programmatic Priorities
- Availability of funds

# Timeline

- January 10<sup>th</sup> – RFA opened
- **April 10<sup>th</sup> – RFA closes**
- April thru August '23 – Threshold and Scoring Reviews
- September '23 – Selectees will be contacted
- October '23 – National announcement for all EJG2G awards

# Questions on...

- Contents of an Application Package
- Evaluation Criteria
- Timeline

Feel free to raise virtual hand, unmute, and ask questions related to all components of the EJG2G program and the RFA...

## General Question & Answer



# Contact Information for EJG2G program

<b>Office of Environmental Justice and External Civil Rights</b>	<a href="mailto:Burney.Jacob@epa.gov">Burney.Jacob@epa.gov</a> , <a href="mailto:Burrell.Omari@epa.gov">Burrell.Omari@epa.gov</a>
<b>Region 1</b>	<a href="mailto:Norcross.Jeffrey@epa.gov">Norcross.Jeffrey@epa.gov</a>
<b>Region 2</b>	<a href="mailto:Frazier.Tasha@epa.gov">Frazier.Tasha@epa.gov</a>
<b>Region 3</b>	<a href="mailto:Scott.Gail@epa.gov">Scott.Gail@epa.gov</a>
<b>Region 4</b>	<a href="mailto:Thomas-Burton.Tami@epa.gov">Thomas-Burton.Tami@epa.gov</a>
<b>Region 5</b>	<a href="mailto:Triantafillou.Kathy@epa.gov">Triantafillou.Kathy@epa.gov</a>
<b>Region 6</b>	<a href="mailto:Acosta.Gerardo@epa.gov">Acosta.Gerardo@epa.gov</a>
<b>Region 7</b>	<a href="mailto:Espinosa.Monica@epa.gov">Espinosa.Monica@epa.gov</a>
<b>Region 8</b>	<a href="mailto:Heffernan.Daniel@epa.gov">Heffernan.Daniel@epa.gov</a>
<b>Region 9</b>	<a href="mailto:Capilla.Morgan@epa.gov">Capilla.Morgan@epa.gov</a>
<b>Region 10</b>	<a href="mailto:Chu.Rebecca@epa.gov">Chu.Rebecca@epa.gov</a>