

We are in the process of ensuring this document is accessible to all audiences. If you need assistance accessing this document, or any materials on the EPA East Palestine, Ohio emergency response webpages, please contact the Region 5 Public Information Officer on-call r5\_eastpalestine@epa.gov

Table 1  
Community Continuous Air Monitoring Results  
East Palestine Derailment Site  
East Palestine, Columbiana County, Ohio

Monitoring Period: 03/13/2023 00:00 through 03/14/2023 12:44

Air Monitoring Instrument: Serial Number	Analyte	Screening Level <sup>1</sup>	Screening Level Exceeded?	8-hour Period Concentration Range	Average of All 8-hour Periods
8533230503	PM <sub>2.5</sub> (mg/m <sup>3</sup> )	0.035 mg/m <sup>3</sup>	No	0.026 to 0.032	0.03
	PM <sub>10</sub> (mg/m <sup>3</sup> )	0.035 mg/m <sup>3</sup>	No	0.026 to 0.032	0.031
8533230504	PM <sub>2.5</sub> (mg/m <sup>3</sup> )	0.035 mg/m <sup>3</sup>	No	0.021 to 0.032	0.029
	PM <sub>10</sub> (mg/m <sup>3</sup> )	0.035 mg/m <sup>3</sup>	No	0.021 to 0.032	0.029
8533230702	PM <sub>2.5</sub> (mg/m <sup>3</sup> )	0.035 mg/m <sup>3</sup>	Yes <sup>2</sup>	0.027 to 0.036	0.034
	PM <sub>10</sub> (mg/m <sup>3</sup> )	0.035 mg/m <sup>3</sup>	Yes <sup>2</sup>	0.028 to 0.037	0.034
W01A00000609	VOC (ppm)	0.5 ppm	No	0.00 to 0.00	0.00
	CO (ppm)	9 ppm	No	0.00 to 0.00	0.00
	H <sub>2</sub> S (ppm)	0.1 ppm	No	0.00 to 0.00	0.00
	LEL (%)	> 5%	No	0.00 to 0.00	0.00
W01A00002173	VOC (ppm)	0.5 ppm	No	0.00 to 0.00	0.00
	CO (ppm)	9 ppm	No	0.00 to 0.00	0.00
	H <sub>2</sub> S (ppm)	0.1 ppm	No	0.00 to 0.00	0.00
	LEL (%)	> 5%	No	0.00 to 0.00	0.00
W01A00002175	VOC (ppm)	0.5 ppm	No	0.00 to 0.00	0.00
	CO (ppm)	9 ppm	No	0.00 to 0.00	0.00
	H <sub>2</sub> S (ppm)	0.1 ppm	No	0.00 to 0.00	0.00
	LEL (%)	> 5%	No	0.00 to 0.00	0.00
W01A00002181	VOC (ppm)	0.5 ppm	No	0.00 to 0.00	0.00
	CO (ppm)	9 ppm	No	0.00 to 0.00	0.00
	H <sub>2</sub> S (ppm)	0.1 ppm	No	0.00 to 0.00	0.00
	LEL (%)	> 5%	No	0.00 to 0.00	0.00
W01A00002182	VOC (ppm)	0.5 ppm	No	0.00 to 0.00	0.00
	CO (ppm)	9 ppm	No	0.00 to 0.00	0.00
	H <sub>2</sub> S (ppm)	0.1 ppm	No	0.00 to 0.00	0.00
	LEL (%)	> 5%	No	0.00 to 0.00	0.00
W01B00002162	VOC (ppm)	0.5 ppm	No	0.00 to 0.00	0.00
	CO (ppm)	9 ppm	No	0.00 to 0.00	0.00
	H <sub>2</sub> S (ppm)	0.1 ppm	No	0.00 to 0.00	0.00
	LEL (%)	> 5%	No	0.00 to 0.00	0.00
W01B00002164	VOC (ppm)	0.5 ppm	No	0.00 to 0.00	0.00
	CO (ppm)	9 ppm	No	0.00 to 0.00	0.00
	H <sub>2</sub> S (ppm)	0.1 ppm	No	0.00 to 0.00	0.00
	LEL (%)	> 5%	No	0.00 to 0.00	0.00
W01B00002170	VOC (ppm)	0.5 ppm	No	0.00 to 0.00	0.00
	CO (ppm)	9 ppm	No	0.00 to 0.01	0.00
	H <sub>2</sub> S (ppm)	0.1 ppm	No	0.00 to 0.00	0.00
	LEL (%)	> 5%	No	0.00 to 0.00	0.00
	HCN (ppm)	1 ppm	No	0.00 to 0.00	0.00

Table 1  
Community Continuous Air Monitoring Results  
East Palestine Derailment Site  
East Palestine, Columbiana County, Ohio

**Monitoring Period: 03/13/2023 00:00 through 03/14/2023 12:44**

<b>Air Monitoring Instrument: Serial Number</b>	<b>Analyte</b>	<b>Screening Level<sup>1</sup></b>	<b>Screening Level Exceeded?</b>	<b>8-hour Period Concentration Range</b>	<b>Average of All 8-hour Periods</b>
<b>W01B00002172</b>	VOC (ppm)	0.5 ppm	No	0.00 to 0.00	0.00
	CO (ppm)	9 ppm	No	0.00 to 0.00	0.00
	H <sub>2</sub> S (ppm)	0.1 ppm	No	0.00 to 0.00	0.00
	LEL (%)	> 5%	No	0.00 to 0.00	0.00
	HCN (ppm)	1 ppm	No	0.00 to 0.00	0.00
<b>W01B00002181</b>	VOC (ppm)	0.5 ppm	No	0.00 to 0.00	0.00
	CO (ppm)	9 ppm	No	0.00 to 0.00	0.00
	H <sub>2</sub> S (ppm)	0.1 ppm	No	0.00 to 0.00	0.00
	LEL (%)	> 5%	No	0.00 to 0.00	0.00
<b>W01B00002183</b>	VOC (ppm)	0.5 ppm	No	0.00 to 0.01	0.00
	CO (ppm)	9 ppm	No	0.00 to 0.03	0.01
	H <sub>2</sub> S (ppm)	0.1 ppm	No	0.00 to 0.00	0.00
	LEL (%)	> 5%	No	0.00 to 0.00	0.00
	HCN (ppm)	1 ppm	No	0.00 to 0.00	0.00
<b>W01B00002206</b>	VOC (ppm)	0.5 ppm	No	0.00 to 0.00	0.00
	CO (ppm)	9 ppm	No	0.00 to 0.0	0.00
	H <sub>2</sub> S (ppm)	0.1 ppm	No	0.00 to 0.00	0.00
	LEL (%)	> 5%	No	0.00 to 0.00	0.00
<b>W01B00002208</b>	VOC (ppm)	0.5 ppm	No	0.00 to 0.00	0.00
	CO (ppm)	9 ppm	No	0.00 to 0.02	0.00
	H <sub>2</sub> S (ppm)	0.1 ppm	No	0.00 to 0.00	0.00
	LEL (%)	> 5%	No	0.00 to 0.00	0.00
<b>W01B00002220</b>	VOC (ppm)	0.5 ppm	No	0.00 to 0.0	0.00
	CO (ppm)	9 ppm	No	0.00 to 0.01	0.00
	H <sub>2</sub> S (ppm)	0.1 ppm	No	0.00 to 0.00	0.00
	LEL (%)	> 5%	No	0.00 to 0.00	0.00
<b>W01B00002221</b>	VOC (ppm)	0.5 ppm	No	0.00 to 0.00	0.00
	CO (ppm)	9 ppm	No	0.00 to 0.00	0.00
	H <sub>2</sub> S (ppm)	0.1 ppm	No	0.00 to 0.00	0.00
<b>W01B00002222</b>	VOC (ppm)	0.5 ppm	No	0.00 to 0.00	0.00
	CO (ppm)	9 ppm	No	0.00 to 0.03	0.01
	H <sub>2</sub> S (ppm)	0.1 ppm	No	0.00 to 0.00	0.00
	LEL (%)	> 5%	No	0.00 to 0.00	0.00
	HCN (ppm)	1 ppm	No	0.00 to 0.00	0.00
<b>W01B00002223</b>	VOC (ppm)	0.5 ppm	No	0.00 to 0.00	0.00
	CO (ppm)	9 ppm	No	0.00 to 0.00	0.00
	H <sub>2</sub> S (ppm)	0.1 ppm	No	0.00 to 0.00	0.00

Table 1  
Community Continuous Air Monitoring Results  
East Palestine Derailment Site  
East Palestine, Columbiana County, Ohio

**Monitoring Period: 03/13/2023 00:00 through 03/14/2023 12:44**

**Notes:**

<sup>1</sup> Site-Specific Action Level stated in the Tetra Tech Air Monitoring and Sampling Plan.

<sup>2</sup> Vehicle traffic observed during monitoring period near monitoring instrument.

Air monitoring measurements have been averaged over a 8-hour time period and summarized above.

Air monitoring is not performed during inclement weather conditions/rain and thunderstorms.

**Abbreviations:**

> - Greater than

% - Percent

CO - Carbon Monoxide

H<sub>2</sub>S - Hydrogen Sulfide

HCN - Hydrogen Cyanide

LEL - Lower Explosive Limit

mg/m<sup>3</sup> - milligrams per meter cubed

PM<sub>2.5</sub> - Particulate Matter, diameter 2.5 micrometers and smaller

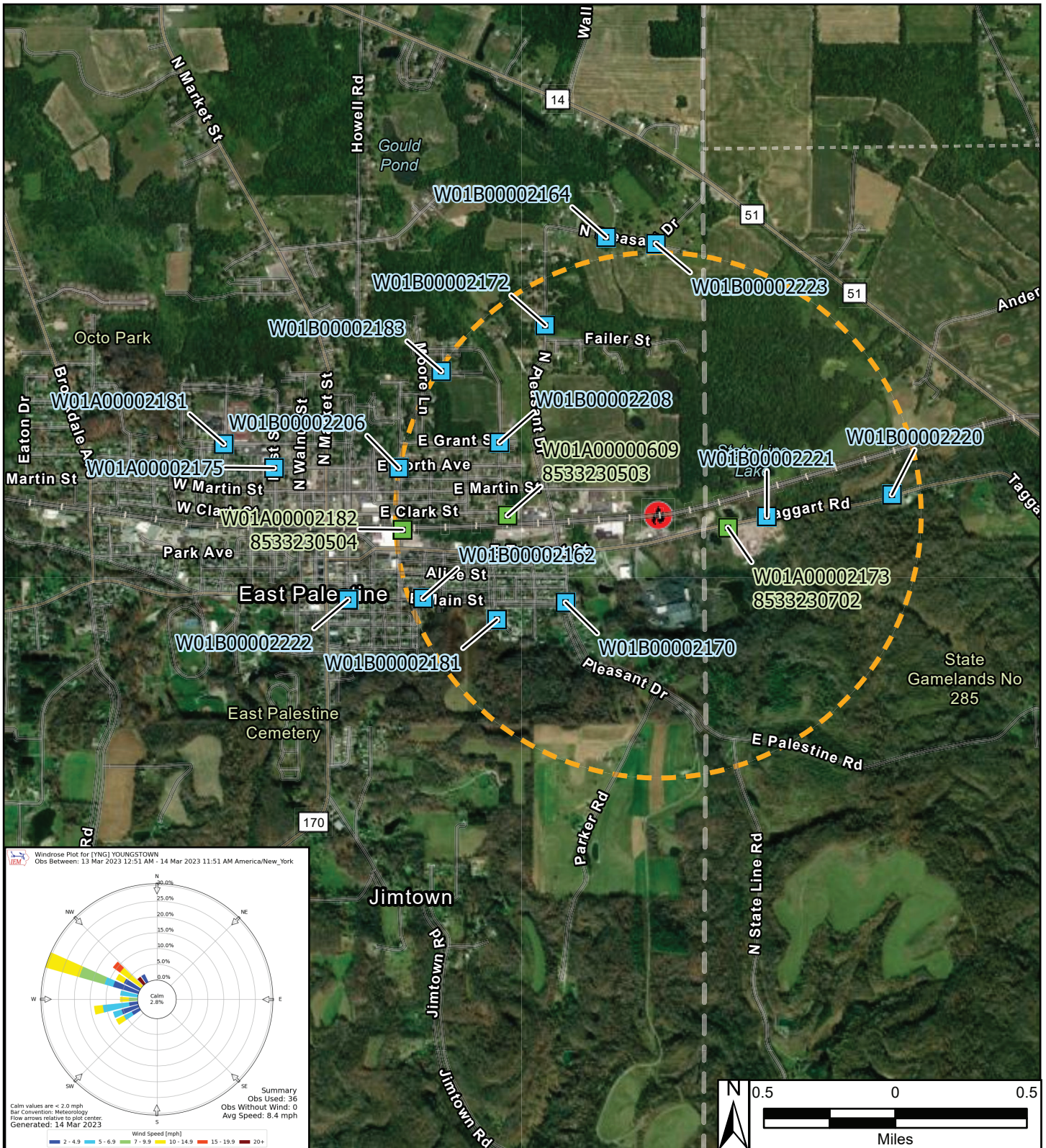
PM<sub>10</sub> - Particulate Matter, diameter 10 micrometers and smaller

ppm - Parts per million

S/N - Serial number

VOC - Volatile organic compound

<p>We are in the process of ensuring this document is accessible to all audiences. If you need assistance accessing this document, or any materials on the EPA East Palestine, Ohio emergency response webpages, please contact the Region 5 Public Information Officer on-call <a href="mailto:r5_eastpalestine@epa.gov">r5_eastpalestine@epa.gov</a></p>
--



**Legend**

- Continuous Air Monitoring Locations with DustTrak
- Continuous Air Monitoring Locations
- Derailment Location
- One Mile Radius

East Palestine Derailment ER Site  
 East Palestine, Columbiana County, OH 44413

**Figure 1**  
**Continuous Air Monitoring Community Stations**

**TETRA TECH**

Prepared For: EPA | Prepared By: Tetra Tech Inc.