

We are in the process of ensuring this document is accessible to all audiences. If you need assistance accessing this document, or any material on the EPA East Palestine, Ohio emergency response webpages, please contact the Region 5 Public Information Officer on-call at: R5_EastPalestine@epa.gov

Table 1
Community Continuous Air Monitoring Results
East Palestine Derailment Site
East Palestine, Columbiana County, Ohio

Monitoring Period: 03/19/2023 00:00 through 03/20/2023 11:11

Air Monitoring Instrument: Serial Number	Analyte	Screening Level ¹	Screening Level Exceeded?	8-hour Period Concentration Range	Average of All 8-hour Periods
8533230503	PM _{2.5} (mg/m ³)	0.035 mg/m ³	No	0.008 to 0.018	0.011
	PM ₁₀ (mg/m ³)	0.035 mg/m ³	No	0.014 to 0.027	0.017
8533230504	PM _{2.5} (mg/m ³)	0.035 mg/m ³	No	0.006 to 0.019	0.013
	PM ₁₀ (mg/m ³)	0.035 mg/m ³	No	0.008 to 0.020	0.014
8533230702	PM _{2.5} (mg/m ³)	0.035 mg/m ³	No	0.012 to 0.021	0.016
	PM ₁₀ (mg/m ³)	0.035 mg/m ³	Yes ²	0.013 to 0.043	0.028
W01A00002173	VOC (ppm)	0.5 ppm	No	0.00 to 0.00	0.00
W01A00000609	VOC (ppm)	0.5 ppm	No	0.00 to 0.00	0.00
W01A00002175	VOC (ppm)	0.5 ppm	No	0.00 to 0.00	0.00
W01A00002182	VOC (ppm)	0.5 ppm	No	0.00 to 0.00	0.00
W01B00002162	VOC (ppm)	0.5 ppm	No	0.00 to 0.00	0.00
W01B00002164	VOC (ppm)	0.5 ppm	No	0.00 to 0.00	0.00
W01B00002170	VOC (ppm)	0.5 ppm	No	0.00 to 0.00	0.00
W01B00002172	VOC (ppm)	0.5 ppm	No	0.00 to 0.00	0.00
W01B00002181	VOC (ppm)	0.5 ppm	No	0.00 to 0.00	0.00
W01B00002183	VOC (ppm)	0.5 ppm	No	0.00 to 0.01	0.00
W01B00002206	VOC (ppm)	0.5 ppm	No	0.00 to 0.00	0.00
W01B00002208	VOC (ppm)	0.5 ppm	No	0.00 to 0.00	0.00
W01B00002220	VOC (ppm)	0.5 ppm	No	0.00 to 0.00	0.00
W01B00002221	VOC (ppm)	0.5 ppm	No	0.00 to 0.00	0.00
W01B00002222	VOC (ppm)	0.5 ppm	No	0.00 to 0.00	0.00
W01B00002223	VOC (ppm)	0.5 ppm	No	0.00 to 0.00	0.00
W01A00002181	VOC (ppm)	0.5 ppm	No	0.00 to 0.00	0.00

Notes:

¹ Site-Specific Action Level stated in the Tetra Tech Air Monitoring and Sampling Plan.

² Vehicle traffic observed during monitoring period near monitoring instrument.

Air monitoring measurements have been averaged over a 8-hour time period and summarized above.

Air monitoring is not performed during inclement weather conditions/rain and thunderstorms.

Abbreviations:

mg/m³ - milligrams per meter cubed

PM_{2.5} - Particulate Matter, diameter 2.5 micrometers and smaller

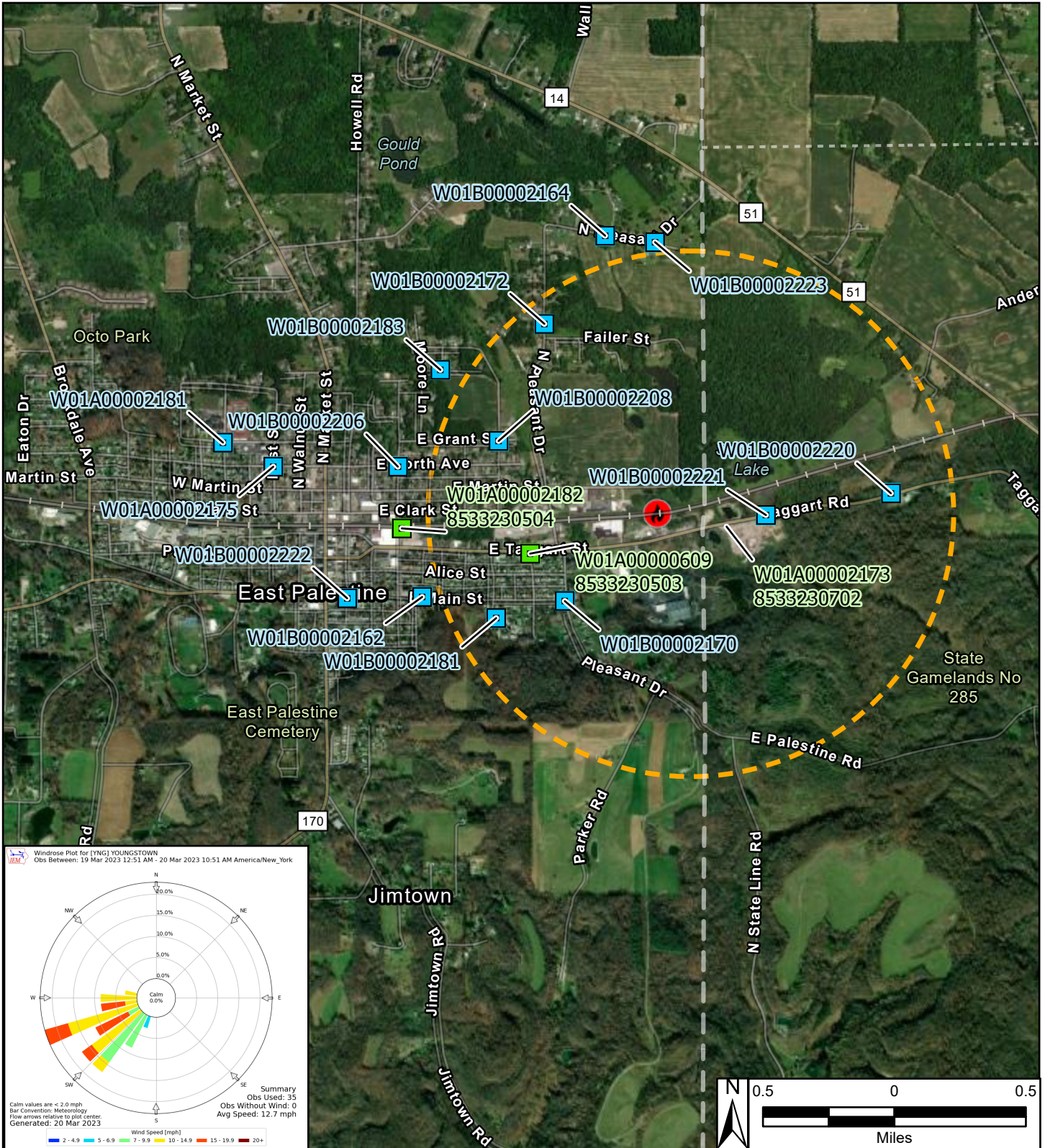
PM₁₀ - Particulate Matter, diameter 10 micrometers and smaller

ppm - Parts per million

S/N - Serial number

VOC - Volatile organic compound

We are in the process of ensuring this document is accessible to all audiences. If you need assistance accessing this document, or any materials on the EPA East Palestine, Ohio emergency response webpages, please contact the Region 5 Public Information Officer on-call r5_eastpalestine@epa.gov



Reference Map



Legend

- Continuous Air Monitoring Locations with DustTrak
- Continuous Air Monitoring Locations
- Derailment Location
- One Mile Radius

East Palestine Derailment ER Site
 East Palestine, Columbiana County, OH 44413

Figure 1
Continuous Air Monitoring
Community Stations



Prepared For: EPA

Prepared By: Tetra Tech Inc.