

We are in the process of ensuring this document is accessible to all audiences. If you need assistance accessing this document, or any material on the EPA East Palestine, Ohio emergency response webpages, please contact the Region 5 Public Information Officer on-call at:
R5_EastPalestine@epa.gov

Table 1
Community Continuous Air Monitoring Results
East Palestine Derailment Site
East Palestine, Columbiana County, Ohio

Monitoring Period: 03/23/2023 00:00 through 03/24/2023 10:48

Air Monitoring Instrument: Serial Number	Analyte	Screening Level ¹	Screening Level Exceeded?	8-hour Period Concentration Range	Average of All 8-hour Periods
W01A00000609	VOC (ppm)	0.5 ppm	No	0.00 to 0.05	0.01
W01A00002175	VOC (ppm)	0.5 ppm	No	0.00 to 0.00	0.00
W01A00002181	VOC (ppm)	0.5 ppm	No	0.00 to 0.00	0.00
W01A00002182	VOC (ppm)	0.5 ppm	No	0.00 to 0.03	0.01
W01B00002162	VOC (ppm)	0.5 ppm	No	0.00 to 0.00	0.00
W01B00002164	VOC (ppm)	0.5 ppm	No	0.00 to 0.00	0.00
W01B00002170	VOC (ppm)	0.5 ppm	No	0.00 to 0.00	0.00
W01B00002172	VOC (ppm)	0.5 ppm	No	0.00 to 0.00	0.00
W01B00002181	VOC (ppm)	0.5 ppm	No	0.00 to 0.00	0.00
W01B00002183	VOC (ppm)	0.5 ppm	No	0.00 to 0.01	0.00
W01B00002206	VOC (ppm)	0.5 ppm	No	0.00 to 0.00	0.00
W01B00002208	VOC (ppm)	0.5 ppm	No	0.00 to 0.00	0.00
W01B00002220	VOC (ppm)	0.5 ppm	No	0.00 to 0.00	0.00
W01B00002221	VOC (ppm)	0.5 ppm	No	0.00 to 0.00	0.00
W01B00002222	VOC (ppm)	0.5 ppm	No	0.00 to 0.00	0.00
W01B00002223	VOC (ppm)	0.5 ppm	No	0.00 to 0.00	0.00

Notes:

¹ Site-Specific Screening Levels stated in the Tetra Tech Air Monitoring and Sampling Plan. Screening levels were modified on March 16, 2023 to reflect updated operation procedures on when to apply mitigation methods to reduce dust. Action levels set by health departments have not changed.

² Vehicle traffic observed during monitoring period near monitoring instrument.

Air monitoring measurements have been averaged over a 8-hour time period and summarized above.

Air monitoring is not performed during inclement weather conditions/rain and thunderstorms.

Particulate measurements (PM_{2.5} and PM₁₀) were not collected during this monitoring period due to precipitation events

Abbreviations:

mg/m³ - milligrams per meter cubed

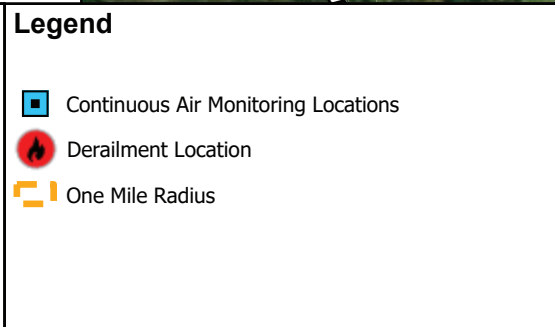
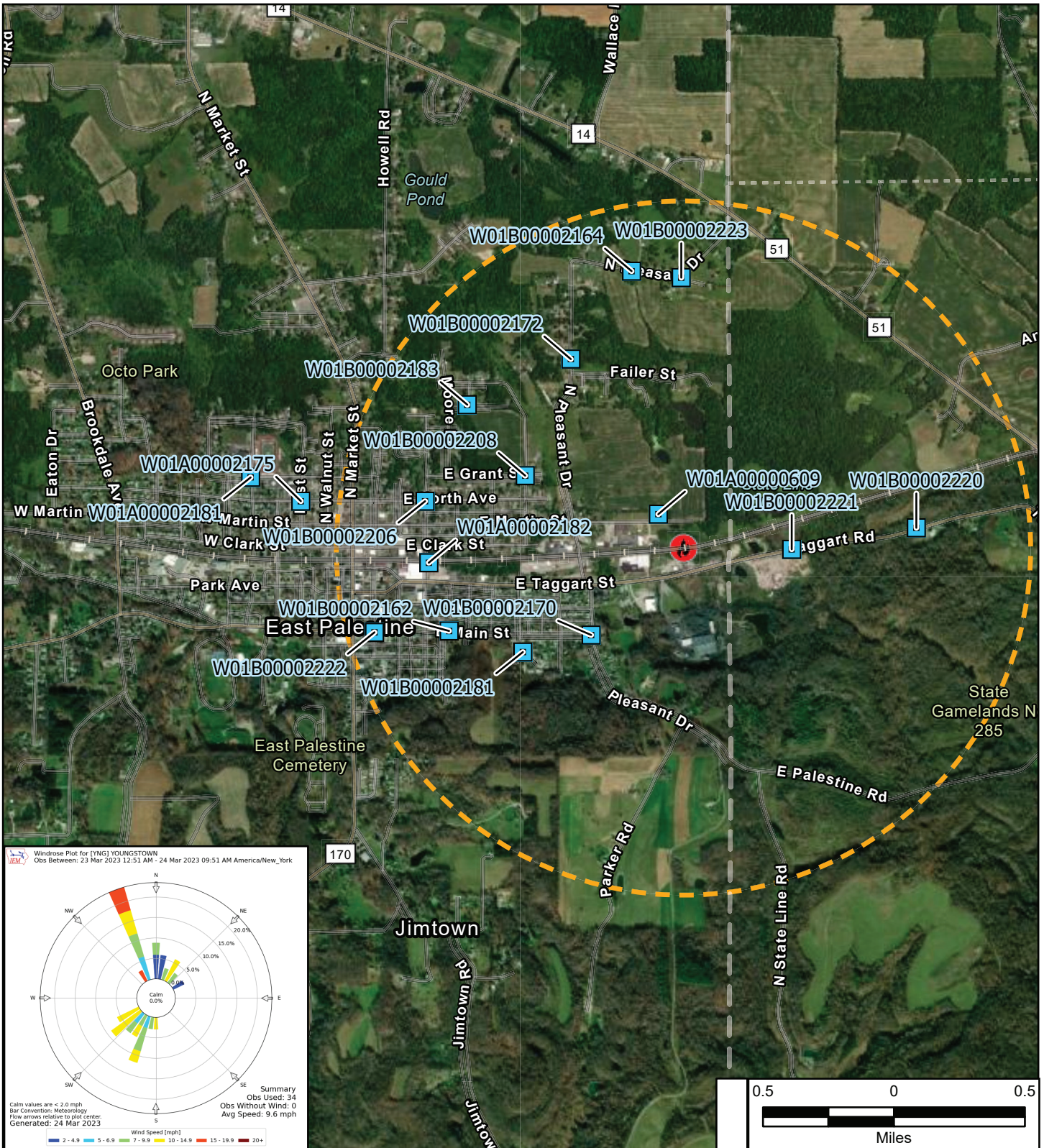
PM_{2.5} - Particulate Matter, diameter 2.5 micrometers and smaller

PM₁₀ - Particulate Matter, diameter 10 micrometers and smaller

ppm - Parts per million

VOC - Volatile organic compound

We are in the process of ensuring this document is accessible to all audiences. If you need assistance accessing this document, or any materials on the EPA East Palestine, Ohio emergency response webpages, please contact the Region 5 Public Information Officer on-call
r5_eastpalestine@epa.gov



East Palestine Derailment ER Site
 East Palestine, Columbiana County, OH 44413

Figure 1
Continuous Air Monitoring Community Stations

Prepared For: EPA Prepared By: Tetra Tech Inc.