

Table 1
Community Continuous Air Monitoring Results
East Palestine Derailment Site
East Palestine, Columbiana County, Ohio

Monitoring Period: 04/12/2023 00:00 through 04/13/2023 10:45

Air Monitoring Instrument: Serial Number	Analyte	Screening Level ¹	Screening Level Exceeded?	8-hour Period Concentration Range	Average of All 8-hour Periods
8533230504	PM _{2.5} (mg/m ³)	0.035 (mg/m ³)	No	0.005 to 0.027	0.014
	PM ₁₀ (mg/m ³)	0.070 (mg/m ³)	No	0.011 to 0.034	0.020
8533230503	PM _{2.5} (mg/m ³)	0.035 (mg/m ³)	Yes ²	0.025 to 0.041	0.032
	PM ₁₀ (mg/m ³)	0.070 (mg/m ³)	Yes ²	0.041 to 0.119	0.073
8533230702	PM _{2.5} (mg/m ³)	0.035 (mg/m ³)	No	0.014 to 0.024	0.018
	PM ₁₀ (mg/m ³)	0.070 (mg/m ³)	No	0.016 to 0.027	0.020
W01A00000609	VOC (ppm)	0.5 (ppm)	No	0.00 to 0.00	0.00
W01B00002209	VOC (ppm)	0.5 (ppm)	No	0.00 to 0.00	0.00
W01A00002175	VOC (ppm)	0.5 (ppm)	No	0.00 to 0.00	0.00
W01A00002181	VOC (ppm)	0.5 (ppm)	No	0.00 to 0.16	0.05
W01A00002182	VOC (ppm)	0.5 (ppm)	No	0.00 to 0.00	0.00
W01B00002162	VOC (ppm)	0.5 (ppm)	No	0.00 to 0.00	0.00
W01B00002164	VOC (ppm)	0.5 (ppm)	No	0.00 to 0.00	0.00
W01B00002170	VOC (ppm)	0.5 (ppm)	No	0.00 to 0.00	0.00
W01B00002172	VOC (ppm)	0.5 (ppm)	No	0.00 to 0.00	0.00
W01B00002181	VOC (ppm)	0.5 (ppm)	No	0.00 to 0.00	0.00
W01B00002183	VOC (ppm)	0.5 (ppm)	No	0.00 to 0.00	0.00
W01B00002206	VOC (ppm)	0.5 (ppm)	No	0.00 to 0.03	0.01
W01B00002208	VOC (ppm)	0.5 (ppm)	No	0.00 to 0.00	0.00
W01B00002220	VOC (ppm)	0.5 (ppm)	No	0.00 to 0.02	0.01
W01B00002221	VOC (ppm)	0.5 (ppm)	No	0.00 to 0.00	0.00
W01B00002222	VOC (ppm)	0.5 (ppm)	No	0.00 to 0.02	0.00
W01B00002223	VOC (ppm)	0.5 (ppm)	No	0.00 to 0.00	0.00

Notes:

¹ Site-Specific Screening Levels stated in the Tetra Tech Air Monitoring and Sampling Plan. Screening levels were modified on March 16, 2023 to reflect updated operation procedures on when to apply mitigation methods to reduce dust. Action levels set by health departments have not changed.

² Vehicle traffic observed during monitoring period near monitoring instrument.

Air monitoring measurements have been averaged over a 8-hour time period and summarized above.

Air monitoring is not performed during inclement weather conditions/rain and thunderstorms.

Abbreviations:

mg/m³ - milligrams per meter cubed

PM_{2.5} - Particulate Matter, diameter 2.5 micrometers and smaller

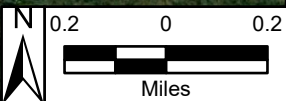
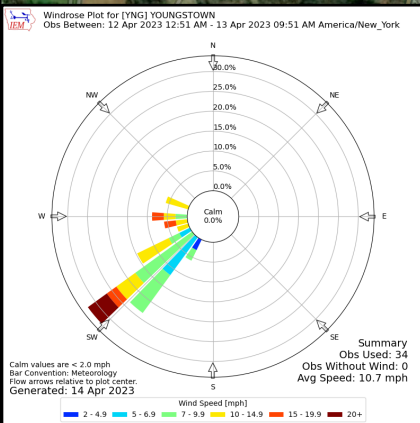
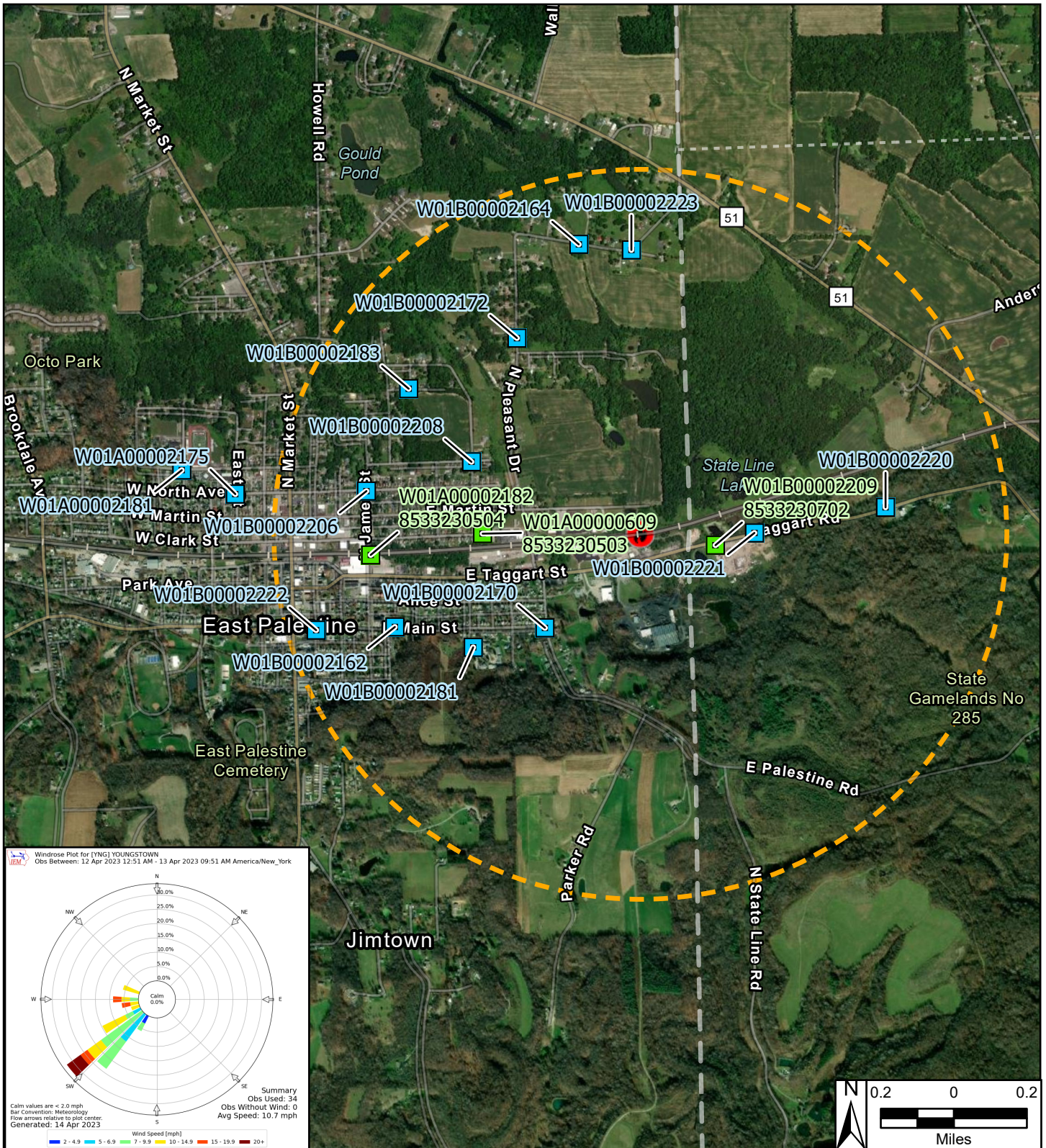
PM₁₀ - Particulate Matter, diameter 10 micrometers and smaller

ppm - Parts per million

S/N - Serial number

VOC - Volatile organic compound

We are in the process of ensuring this document is accessible to all audiences. If you need assistance accessing this document, or any materials on the EPA East Palestine, Ohio emergency response webpages, please contact the Region 5 Public Information Officer on-call r5_eastpalestine@epa.gov



Reference Map



Legend

- Continuous Air Monitoring Locations with DustTrak
- Continuous Air Monitoring Locations
- 🔥 Derailment Location
- ⬭ One Mile Radius

East Palestine Derailment ER Site
East Palestine, Columbiana County, OH 44413

Figure 1
Continuous Air Monitoring Community Stations



Prepared For: EPA

Prepared By: Tetra Tech Inc.