

Table 1
Community Continuous Air Monitoring Results
East Palestine Derailment Site
East Palestine, Columbiana County, Ohio

Monitoring Period: 04/18/2023 00:00 through 04/19/2023 10:25

Air Monitoring Instrument: Serial Number	Analyte	Screening Level ¹	Screening Level Exceeded?	8-hour Period Concentration Range	Average of All 8-hour Periods
8533230504	PM _{2.5} (mg/m ³)	0.035 (mg/m ³)	Yes ²	0.007 to 0.040	0.018
	PM ₁₀ (mg/m ³)	0.070 (mg/m ³)	No	0.009 to 0.042	0.019
8533230503	PM _{2.5} (mg/m ³)	0.035 (mg/m ³)	No	0.004 to 0.03	0.014
	PM ₁₀ (mg/m ³)	0.070 (mg/m ³)	No	0.005 to 0.039	0.023
8533230702	PM _{2.5} (mg/m ³)	0.035 (mg/m ³)	No	0.007 to 0.030	0.015
	PM ₁₀ (mg/m ³)	0.070 (mg/m ³)	No	0.007 to 0.031	0.016
W01A00000609	VOC (ppm)	0.5 (ppm)	No	0.00 to 0.00	0.00
W01B00002209	VOC (ppm)	0.5 (ppm)	No	0.01 to 0.06	0.03
W01A000002175	VOC (ppm)	0.5 (ppm)	No	0.00 to 0.00	0.00
W01A000002181	VOC (ppm)	0.5 (ppm)	No	0.00 to 0.00	0.00
W01A000002182	VOC (ppm)	0.5 (ppm)	No	0.00 to 0.00	0.00
W01B000002162	VOC (ppm)	0.5 (ppm)	No	0.00 to 0.00	0.00
W01B000002164	VOC (ppm)	0.5 (ppm)	No	0.00 to 0.00	0.00
W01B000002170	VOC (ppm)	0.5 (ppm)	No	0.00 to 0.00	0.00
W01B000002172	VOC (ppm)	0.5 (ppm)	No	0.00 to 0.00	0.00
W01B000002181	VOC (ppm)	0.5 (ppm)	No	0.00 to 0.00	0.00
W01B000002183	VOC (ppm)	0.5 (ppm)	No	0.00 to 0.03	0.01
W01B000002206	VOC (ppm)	0.5 (ppm)	No	0.00 to 0.00	0.00
W01B000002208	VOC (ppm)	0.5 (ppm)	No	0.00 to 0.00	0.00
W01B000002220	VOC (ppm)	0.5 (ppm)	No	0.00 to 0.00	0.00
W01B000002221	VOC (ppm)	0.5 (ppm)	No	0.00 to 0.00	0.00
W01B000002222	VOC (ppm)	0.5 (ppm)	No	0.00 to 0.00	0.00
W01B000002223	VOC (ppm)	0.5 (ppm)	No	0.00 to 0.00	0.00

Notes:

¹ Site-Specific Screening Levels stated in the Tetra Tech Air Monitoring and Sampling Plan. Screening levels were modified on March 16, 2023 to reflect updated operation procedures on when to apply mitigation methods to reduce dust. Action levels set by health departments have not changed.

² Vehicle traffic observed during monitoring period near monitoring instrument.

Air monitoring measurements have been averaged over a 8-hour time period and summarized above.

Air monitoring is not performed during inclement weather conditions/rain and thunderstorms.

Abbreviations:

mg/m³ - milligrams per meter cubed

PM_{2.5} - Particulate Matter, diameter 2.5 micrometers and smaller

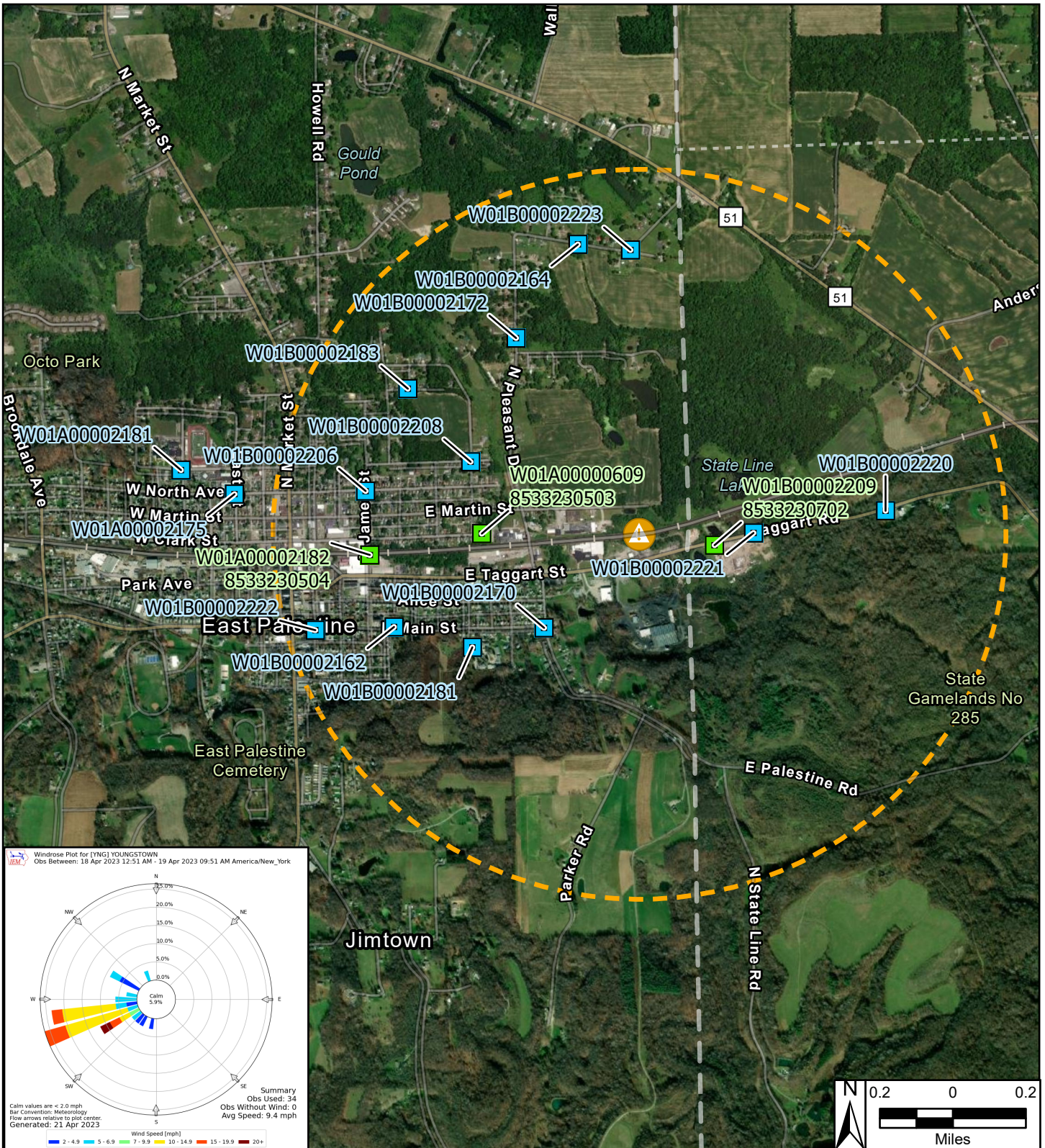
PM₁₀ - Particulate Matter, diameter 10 micrometers and smaller

ppm - Parts per million

S/N - Serial number

VOC - Volatile organic compound

We are in the process of ensuring this document is accessible to all audiences. If you need assistance accessing this document, or any materials on the EPA East Palestine, Ohio emergency response webpages, please contact the Region 5 Public Information Officer on-call r5_eastpalestine@epa.gov



East Palestine Derailment ER Site
 East Palestine, Columbiana County, OH 44413

Figure 1
Continuous Air Monitoring
Community Stations



Prepared For: EPA | Prepared By: Tetra Tech Inc.



- Legend**
- Continuous Air Monitoring Locations with DustTrak
 - Continuous Air Monitoring Locations
 - One Mile Radius
 - ▲ Derailment Location