

East Palestine

TRAIN DERAILMENT RESPONSE

Serving East Palestine, Negley, Darlington
and surrounding communities

NEWSLETTER



EPA responder logging a truck leaving the derailment site

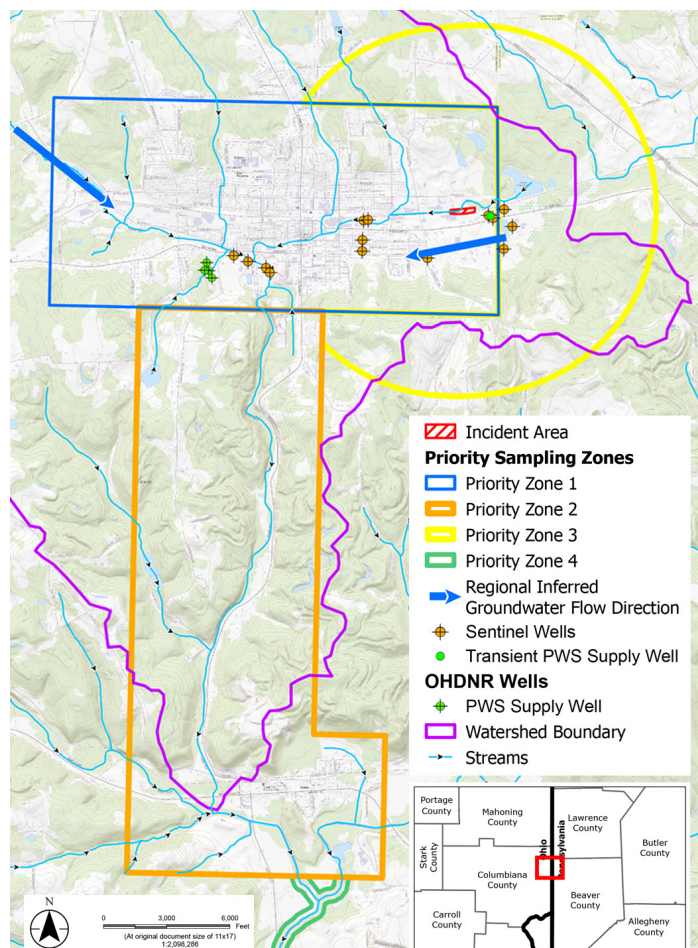
PROGRESS MADE

Water Sampling is Expanding

Columbiana County Health District and Norfolk Southern are expanding private well sampling to include two additional priority zones and a more targeted list of chemicals for analysis. The additional testing zones include a one-mile radius around the derailment site and a 250-foot buffer along the potentially impacted streams, extending all the way to the Ohio River. Last week, scheduling started for homes that had previously requested sampling within the now expanded priority areas. If your home is within one of the priority areas, you can request well sampling by calling 330-849-3919.

Soil Sampling Results

Phase 1 of soil sampling is completed and most of the preliminary data are in. Most of the results are within typical ranges for soil and there is no noticeable difference between shallow and deeper soils. Samples taken on private properties are at or below screening levels, and only a few samples taken along public rights-of-way show higher levels of compounds. Next steps include notifying property and business owners, posting data on EPA's website, and conducting statistical analysis.



THE WEEK AHEAD

At the derailment site:

- Excavation work along the north track has started and will continue.
- Expect increased traffic along East Martin Street.
- Excavated soil and wastewater will continue to be shipped off-site.
- The Trace Atmospheric Gas Analyzer (TAGA) bus will continue air monitoring. Two similar mobile laboratories, using Proton Transfer Reaction – Mass Spectrometry (PTR-MS), will also be monitoring air quality to compare results with the TAGA.
- Taggart Street remains closed to the public.

In the greater community:

- EPA's Community Welcome Center remains open to the public at 25 North Market Street in East Palestine. Expect changes to weekend hours over the coming weeks.
- The Way Station will host an informational session on air monitoring and sampling at 109 West Rebecca Street on April 27 from 6 to 7 p.m.
- Water sampling will include two additional priority zones.
- Stream assessments will continue all the way down to Little Beaver Creek.
- Air monitoring will continue at 23 locations around the community.

COMMUNITY CORNER

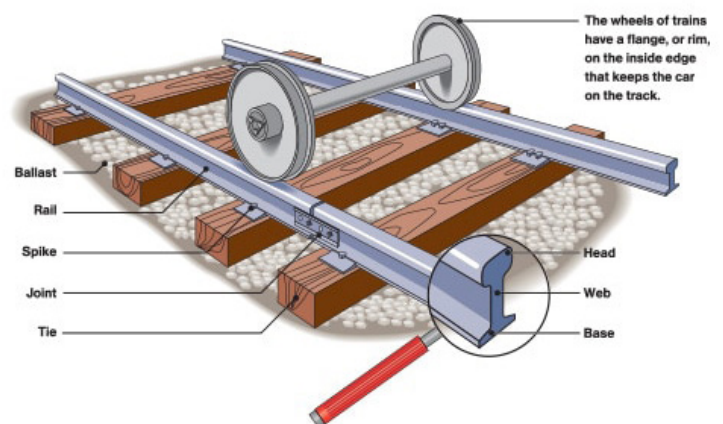
On April 18, an East Palestine gardening group hosted a phytoremediation and seed distribution event at the First Church of Christ in East Palestine. Seed companies donated a variety of seeds, including corn, mustard, and sunflowers, to the East Palestine community. Environmental engineer Steve Rock gave a presentation on the ability of plants to reduce contamination in soil. For example, vinyl chloride, a chemical released in the train derailment, degrades quickly in soil at a rate of about 25% per week, and plants help it break down even faster. Another chemical being assessed in the area, dioxin, does not degrade much in soil but it does not transfer into plants. Potentially impacted yards have been sampled and special precautions are not needed when planting your garden.



DID YOU KNOW?

Track upgrades are underway in East Palestine.

Over the last few weeks, contaminated soil under the south track was removed, and excavated areas were cleared and backfilled with clean material. Then, ribbon rails, also known as continuous welded rails, or CWR, were hauled in by train and installed over clean soil and compacted ballast (gravel or coarse stone used to form the bed of a railroad track or road). Ribbon rails are single uninterrupted sections of steel up to several miles in length and are being used instead of pieces of panel rail. Since ribbon rails are continuously welded, they minimize individual weld points and replace jointed areas that can create an uneven and bumpy ride.



www.washingtonpost.com/sf/brand-connect/wp/enterprise/ribbons-of-rail/



(866) 361-0526



R5_eastpalestine@epa.gov



response.epa.gov/EastPalestineTrainDerailment

TOP 3 QUESTIONS OF THE WEEK

01 Can I grow a garden at home and eat the produce?

Yes. You can continue to use your yard as you normally would. Residential soil sampling results are within typical ranges for the area, and garden plants are generally considered safe to eat. Follow normal measures like peeling carrots and root vegetables and washing leafy greens.

02 What is the East Palestine Potable Water Sampling Work Plan?

In February, EPA required Norfolk Southern to investigate drinking water sources through a work plan approved by responding agencies. The work plan is being used to monitor drinking water near the derailment site, and recently changed to include more areas for water sampling. These new areas were chosen based on groundwater and surface water flows, and the watershed basin. Agencies coordinating the drinking water sampling include EPA, Ohio EPA, Columbiana County Health District, Ohio Department of Health, and the Pennsylvania Department of Environmental Protection.

03 How is waste leaving the derailment site tracked?

EPA on-scene coordinators are assigned to track liquid-and solid-waste trucks entering and leaving the derailment site. They log every truck, oversee the loading and covering of waste, truck washing and weighing, and the proper placement of placards. Responders take pictures throughout the process. All trucks go to approved and regulated waste facilities.

BY THE NUMBERS

As of April 20

33,216

ESTIMATED TONS OF SOLID WASTE SHIPPED OFFSITE

13.1 million

EST. GALLONS OF WASTEWATER SHIPPED OFFSITE

459

PRIVATE WELLS SAMPLED

148

AREAS SAMPLED FOR SOIL ANALYSIS

649

VISITORS TO THE WELCOME CENTER

COMMUNITY RESOURCE LIST

HEALTH RESOURCES

Pennsylvania Residents:

Call the Department of Health Hotline (877-PA-HEALTH) to connect with a nurse to find appropriate local health care services

Ohio Residents:

The East Palestine Clinic is located at 139 North Walnut, East Palestine, Ohio

The clinic will operate:

- Monday - Thursday 9 a.m. - 5 p.m. by appointment only
- The clinic can be contacted by calling 330-383-6020
- The clinic is a primary care office for evaluating and treating acute illnesses, as well as focusing on health maintenance and preventive medical care

ENVIRONMENTAL RESOURCES

Pennsylvania Residents:

Pennsylvania Department of Environmental Protection

- Southwest Regional Office water testing line: 412-442-4000

Pennsylvania Department of Agriculture

- Pennsylvania farmers and producers who are affected by the derailment and have questions or concerns can call 855-777-6735

Ohio Residents:

Ohio Environmental Protection Agency

- For public drinking water quality and surface water results: 614-644-2160

Ohio Department of Agriculture

- For questions about livestock and pet health.
- Division of Animal Health: 614-728-6220

IN CASE YOU MISSED IT



The Way Station and First United Presbyterian Church hosted an informational session about soil where EPA representatives discussed the soil sampling program and demonstrated how they collect and log a sample. Preliminary results will be posted on EPA's website.

Scan the QR code to watch a recording of the meeting.



(866) 361-0526



R5_eastpalestine@epa.gov



response.epa.gov/EastPalestineTrainDerailment

KEY COMMUNITY EVENTS THIS WEEK

On April 27, The Way Station and First United Presbyterian Church will host an informational session about EPA's air program from 6 to 7 p.m. EPA representatives will be discussing air monitoring and sampling and demonstrating the specific instruments used. This session will be held at 109 West Rebecca Street in East Palestine.

Missed last week's session on soil sampling?

Scan the code on p. 3 under "In Case You Missed It" to watch the recording.

NEW EPA WELCOME CENTER HOURS

Monday - Saturday: 8 a.m. - 8 p.m

Sunday: 1 p.m. - 6 p.m

Please contact EPA's Information Line at 866-361-0526 if you have any questions.

ABOUT THIS PUBLICATION

This weekly newsletter is being developed through a joint effort of local, state, federal agencies, and community organizations. If you would like more information about topics discussed, please visit response.epa.gov/EastPalestineTrainDerailment or call EPA's Information Line at **866-361-0526**



SCAN ME for a list of additional resources

EPA Welcome Center - EPTD
25 N. Market St
East Palestine, OH 44413