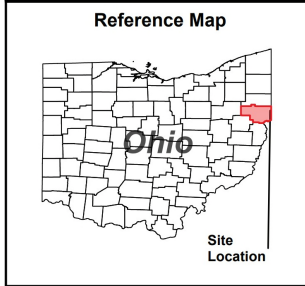
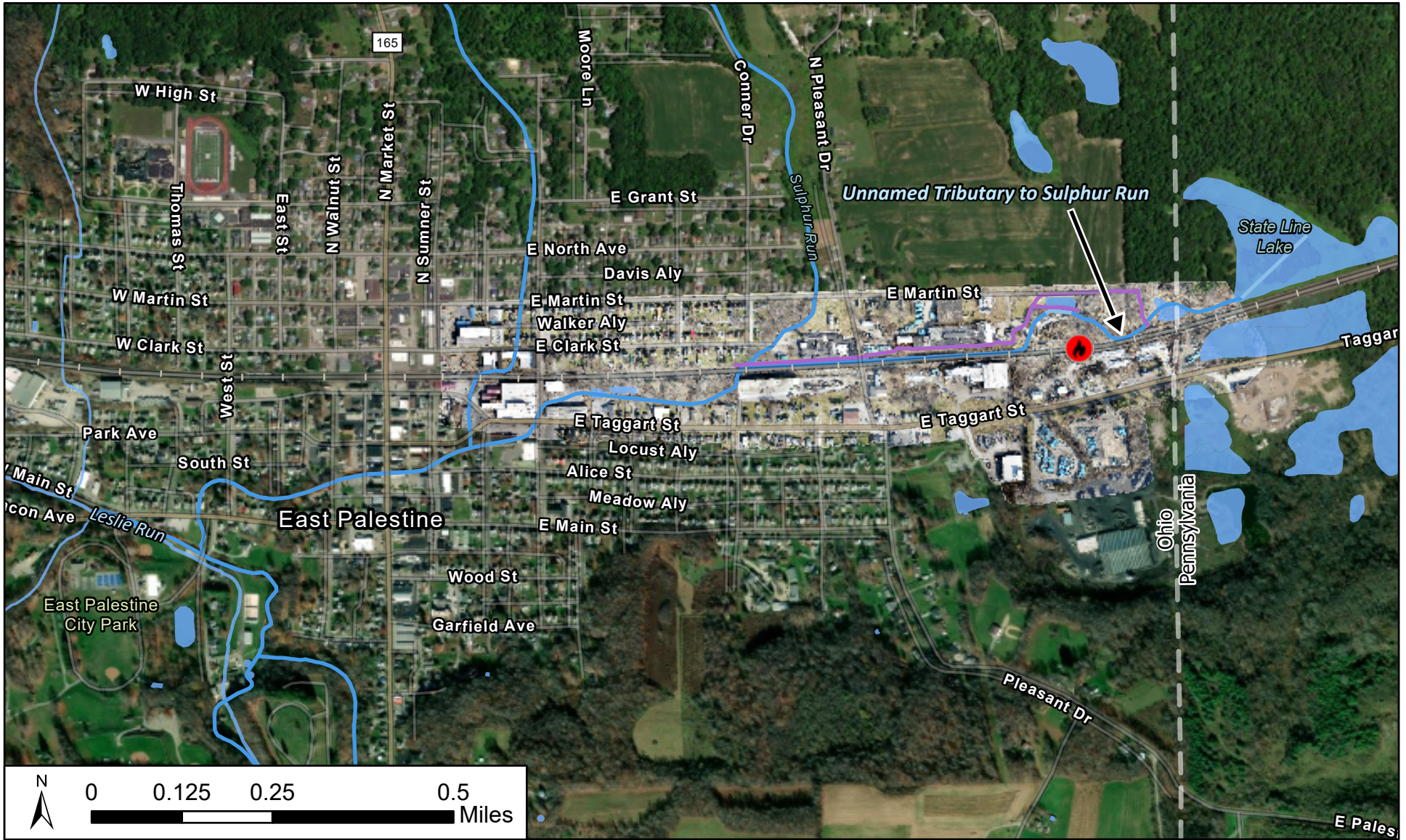




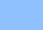



## EXHIBIT A



Legend


 Derailment Location	 NHD Flowlines
 Water Bypass	 Stream/River
 Wetland	 Artificial Path

East Palestine, Ohio Train Derailment Response

---

Map of Site Features:  
Sulphur Run to Leslie Run

---

 Prepared By: U.S. EPA  
Date: 3/25/2023