

Table 1
Community Roving Air Monitoring Results Summary Table
East Palestine Derailment Emergency Response
East Palestine, Ohio
Monitoring Period: 03/24/2023 07:56 to 03/24/2023 16:52

We are in the process of ensuring this document is accessible to all audiences. If you need assistance accessing this document, or any material on the EPA East Palestine, Ohio emergency response web pages, please contact the Region 5 Public Information Officer on-call at:
R5_EastPalestine@epa.gov

Location	Date/Time	VOC (ppm)	PM _{2.5} (mg/m ³) ¹	PM ₁₀ (mg/m ³) ¹
		Screening Levels		
		0.5 ppm	0.035 mg/m ³	0.070 mg/m ³
PCR-N-03	3/24/2023 8:15	0	0.006	0.007
	3/24/2023 11:24	0	0.007	0.009
	3/24/2023 14:18	0	0.016	0.025
PCR-N-04	3/24/2023 9:00	0	0.009	0.012
	3/24/2023 11:58	0	0.019	0.033
	3/24/2023 14:42	0	0.011	0.013
PCR-N-05	3/24/2023 9:07	0	0.006	0.006
	3/24/2023 12:05	0	0.023	0.043
	3/24/2023 14:46	0	0.009	0.009
PCR-N-06	3/24/2023 8:49	0	0.005	0.006
	3/24/2023 11:46	0	0.008	0.009
	3/24/2023 14:36	0	0.011	0.013
PCR-N-07	3/24/2023 8:21	0	0.005	0.005
	3/24/2023 11:27	0	0.012	0.013
	3/24/2023 14:21	0	0.015	0.023
PCR-N-08	3/24/2023 8:27	0	0.005	0.006
	3/24/2023 11:31	0	0.008	0.008
	3/24/2023 14:25	0	0.008	0.009
PCR-N-09	3/24/2023 8:34	0	0.004	0.005
	3/24/2023 11:36	0	0.009	0.011
	3/24/2023 14:29	0	0.009	0.011
PCR-N-10	3/24/2023 8:42	0	0.005	0.005
	3/24/2023 11:43	0	0.01	0.022
	3/24/2023 14:32	0	0.011	0.013
PCR-N-11	3/24/2023 9:15	0	0.006	0.006
	3/24/2023 12:09	0	0.014	0.021
	3/24/2023 14:49	0	0.01	0.013
PCR-N-12	3/24/2023 9:21	0	0.006	0.008
	3/24/2023 12:13	0	0.012	0.019
	3/24/2023 14:53	0	0.01	0.016
PCR-N-13	3/24/2023 8:54	0	0.005	0.005
	3/24/2023 11:50	0	0.01	0.012
	3/24/2023 14:39	0	0.01	0.012
PCR-S-01	3/24/2023 10:56	0	0.008	0.011
	3/24/2023 13:02	0	0.017	0.027
	3/24/2023 16:18	0	0.008	0.011

We are in the process of ensuring this document is accessible to all audiences. If you need assistance accessing this document, or any materials on the EPA East Palestine, Ohio emergency response webpages, please contact the Region 5 Public Information Officer on-call r5_eastpalestine@epa.gov

Table 1
Community Roving Air Monitoring Results Summary Table
East Palestine Derailment Emergency Response
East Palestine, Ohio
Monitoring Period: 03/24/2023 07:56 to 03/24/2023 16:52

Location	Date/Time	VOC (ppm)	PM _{2.5} (mg/m ³) ¹	PM ₁₀ (mg/m ³) ¹
		Screening Levels		
		0.5 ppm	0.035 mg/m ³	0.070 mg/m ³
PCR-S-04	3/24/2023 10:24	0	0.006	0.007
	3/24/2023 12:57	0	0.011	0.019
	3/24/2023 15:58	0	0.01	0.011
PCR-S-05	3/24/2023 10:13	0	0.01	0.013
	3/24/2023 12:45	0	0.01	0.012
	3/24/2023 15:26	0	0.01	0.012
PCR-S-06	3/24/2023 10:05	0	0.009	0.01
	3/24/2023 12:41	0	0.019	0.028
	3/24/2023 15:22	0	0.018	0.02
PCR-S-07	3/24/2023 9:59	0	0.007	0.007
	3/24/2023 12:36	0	0.012	0.018
	3/24/2023 15:19	0	0.013	0.014
PCR-S-08	3/24/2023 9:32	0	0.006	0.006
	3/24/2023 12:21	0	0.01	0.013
	3/24/2023 15:02	0	0.016	0.022
PCR-S-09	3/24/2023 10:19	0	0.007	0.009
	3/24/2023 12:49	0	0.009	0.01
	3/24/2023 15:30	0	0.012	0.014
PCR-S-10	3/24/2023 7:56	0	0.005	0.005
	3/24/2023 11:19	0	0.022	0.03
	3/24/2023 14:09	0	0.012	0.012
	3/24/2023 16:52	0	0.013	0.014
PCR-S-14	3/24/2023 9:42	0	0.006	0.006
	3/24/2023 12:27	0	0.017	0.025
	3/24/2023 15:09	0	0.022	0.032
PCR-S-15	3/24/2023 9:49	0	0.006	0.007
	3/24/2023 12:30	0	0.009	0.014
	3/24/2023 15:12	0	0.011	0.013
PCR-S-16	3/24/2023 9:54	0	0.009	0.011
	3/24/2023 12:33	0	0.007	0.008
	3/24/2023 15:15	0	0.011	0.012

Table 1
Community Roving Air Monitoring Results Summary Table
East Palestine Derailment Emergency Response
East Palestine, Ohio
Monitoring Period: 03/24/2023 07:56 to 03/24/2023 16:52

Notes:

Highlighted indicate detections above screening levels
Grey cells indicate no measurement was collected for that specific parameter
1 - Site-Specific Public Health Screening Levels for particulate matter are based on 24-hour time-weighted averages (TWAs). Fixed discrete monitoring readings are discrete readings, and so do not represent conditions over a full 24-hour period. Screening levels were modified on March 16, 2023 to reflect updated operation procedures on when to apply mitigation methods to reduce dust. Action levels set by health departments have not changed.

* - the screening level is the instrument's limit of detection.

mg/m³ - milligrams per cubic meter

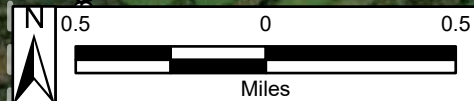
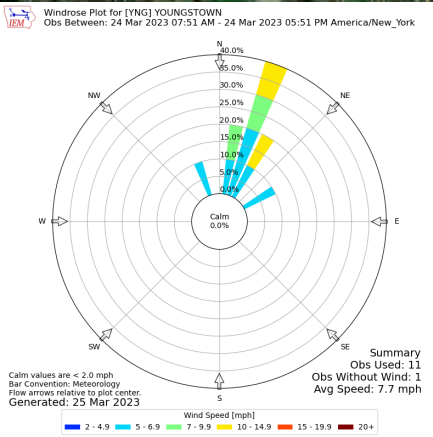
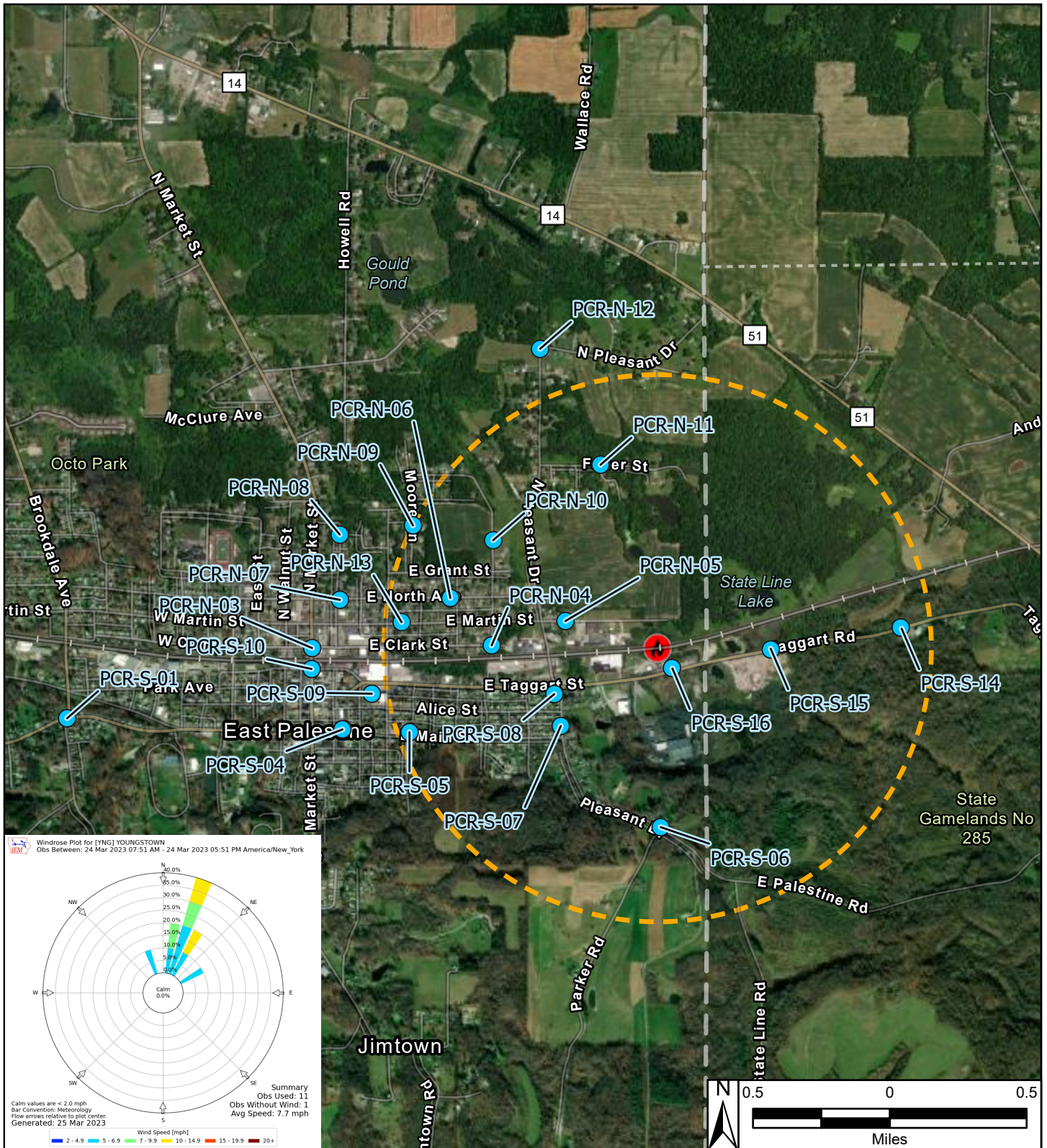
PM_{2.5} - particles that are 2.5 micrometers and smaller

PM₁₀ - particles that are 10 micrometers and smaller

ppm - parts per million

TWA - time-weighted average

VOC - volatile organic compounds



Reference Map



Legend

- Derailment Location
- One Mile Radius
- Roaming Air Monitoring Locations

East Palestine Derailment ER Site
 East Palestine, Columbiana County, OH 44413

Figure 1
Roaming Air Monitoring
Community Locations



Prepared For: EPA

Prepared By: Tetra Tech Inc.