

Table 1  
Community Roving Air Monitoring Results Summary Table  
East Palestine Derailment Emergency Response  
East Palestine, Ohio  
Monitoring Period: 04/23/2023 07:44 to 04/23/2023 17:08

Location	Date/Time	VOC (ppm)	PM <sub>2.5</sub> (mg/m <sup>3</sup> ) <sup>1</sup>	PM <sub>10</sub> (mg/m <sup>3</sup> ) <sup>1</sup>
		Screening Levels		
		0.5 ppm	0.035 mg/m <sup>3</sup>	0.070 mg/m <sup>3</sup>
PCR-N-03	4/23/2023 8:09	0	0.008	0.01
	4/23/2023 11:17	0	0.006	0.007
	4/23/2023 15:20	0	0.011	0.012
PCR-N-04	4/23/2023 9:10	0	0.008	0.009
	4/23/2023 13:12	0	0.009	0.014
	4/23/2023 15:55	0	0.006	0.01
PCR-N-05	4/23/2023 9:20	0	0.01	0.013
	4/23/2023 13:19	0	0.007	0.008
	4/23/2023 15:59	0	0.028	0.057
PCR-N-06	4/23/2023 8:58	0	0.008	0.009
	4/23/2023 11:49	0	0.007	0.008
	4/23/2023 15:46	0	0.004	0.005
PCR-N-07	4/23/2023 8:20	0	0.008	0.009
	4/23/2023 11:22	0	0.008	0.008
	4/23/2023 15:24	0	0.004	0.005
PCR-N-08	4/23/2023 8:29	0	0.008	0.011
	4/23/2023 11:30	0	0.008	0.009
	4/23/2023 15:29	0	0.003	0.003
PCR-N-09	4/23/2023 8:40	0	0.008	0.01
	4/23/2023 11:36	0	0.008	0.009
	4/23/2023 15:37	0	0.004	0.005
PCR-N-10	4/23/2023 8:50	0	0.007	0.008
	4/23/2023 11:40	0	0.007	0.008
	4/23/2023 15:42	0		0.004
PCR-N-11	4/23/2023 9:27	0	0.009	0.013
	4/23/2023 13:25	0	0.013	0.017
	4/23/2023 16:06	0	0.007	0.015
PCR-N-12	4/23/2023 13:29	0	0.006	0.007
	4/23/2023 16:11	0	0.003	0.004
PCR-N-13	4/23/2023 9:05	0	0.009	0.012
	4/23/2023 13:08	0	0.007	0.009
	4/23/2023 15:50	0	0.004	0.006
PCR-S-01	4/23/2023 10:46	0	0.008	0.009
	4/23/2023 15:01	0	0.004	0.005
	4/23/2023 17:08	0	0.007	0.008

We are in the process of ensuring this document is accessible to all audiences. If you need assistance accessing this document, or any materials on the EPA East Palestine, Ohio emergency response webpages, please contact the Region 5 Public Information Officer on-call r5\_eastpalestine@epa.gov

Table 1  
Community Roving Air Monitoring Results Summary Table  
East Palestine Derailment Emergency Response  
East Palestine, Ohio  
Monitoring Period: 04/23/2023 07:44 to 04/23/2023 17:08

Location	Date/Time	VOC (ppm)	PM <sub>2.5</sub> (mg/m <sup>3</sup> ) <sup>1</sup>	PM <sub>10</sub> (mg/m <sup>3</sup> ) <sup>1</sup>
		Screening Levels		
		0.5 ppm	0.035 mg/m <sup>3</sup>	0.070 mg/m <sup>3</sup>
PCR-S-04	4/23/2023 10:30	0	0.008	0.009
	4/23/2023 14:49	0	0.006	0.007
	4/23/2023 16:55	0	0.004	0.005
PCR-S-05	4/23/2023 10:24	0	0.007	0.007
	4/23/2023 14:42	0	0.014	0.015
	4/23/2023 16:52	0	0.004	0.005
PCR-S-06	4/23/2023 10:15	0	0.009	0.01
	4/23/2023 14:24	0	0.004	0.004
	4/23/2023 16:45	0	0.004	0.004
PCR-S-07	4/23/2023 10:09	0	0.008	0.009
	4/23/2023 14:17	0	0.007	0.008
	4/23/2023 16:41	0	0.003	0.003
PCR-S-08	4/23/2023 9:45	0	0.007	0.008
	4/23/2023 13:38	0	0.014	0.014
	4/23/2023 16:20	0	0.004	0.005
PCR-S-09	4/23/2023 10:38	0	0.009	0.011
	4/23/2023 14:53	0	0.005	0.005
	4/23/2023 17:00	0	0.006	0.008
PCR-S-10	4/23/2023 7:44	0	0.011	0.014
	4/23/2023 11:11	0	0.013	0.014
	4/23/2023 15:08	0	0.005	0.006
PCR-S-14	4/23/2023 9:53	0	0.009	0.011
	4/23/2023 13:46	0	0.017	0.018
	4/23/2023 16:26	0	0.003	0.004
PCR-S-15	4/23/2023 9:59	0	0.017	0.019
	4/23/2023 13:51	0	0.011	0.012
	4/23/2023 16:30	0	0.004	0.004
PCR-S-16	4/23/2023 10:06	0	0.009	0.013
	4/23/2023 13:55	0	0.027	0.031
	4/23/2023 16:35	0	0.005	0.006

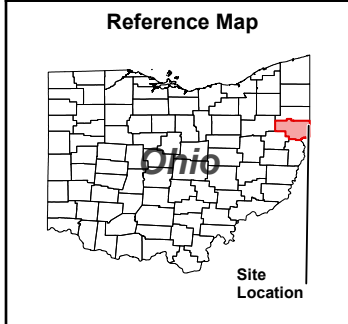
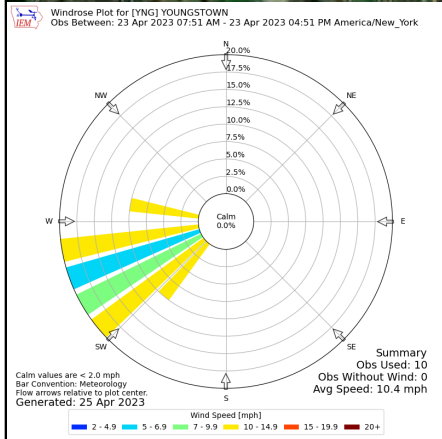
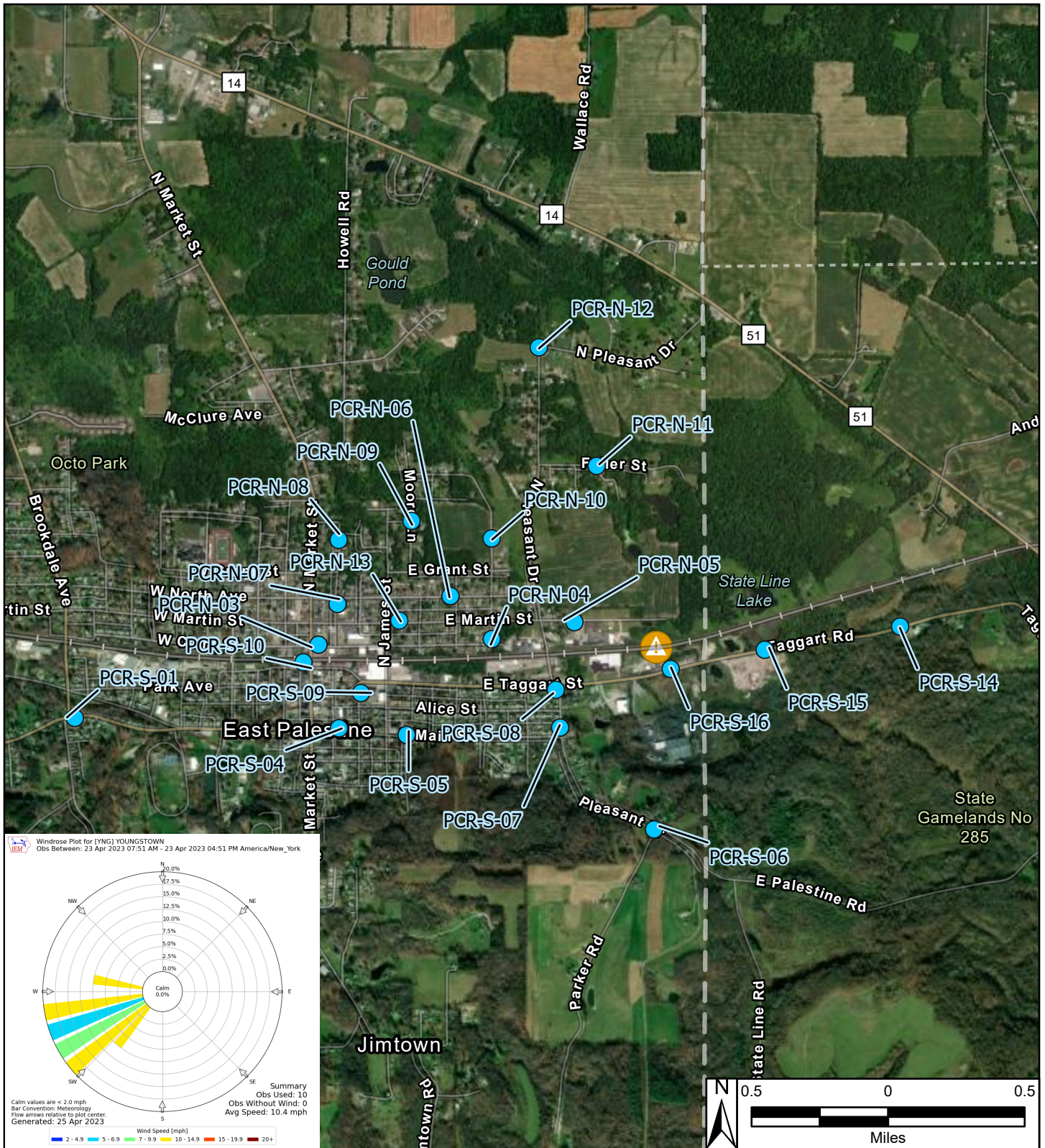
Table 1  
Community Roving Air Monitoring Results Summary Table  
East Palestine Derailment Emergency Response  
East Palestine, Ohio  
Monitoring Period: 04/23/2023 07:44 to 04/23/2023 17:08

Notes:

Highlighted indicate detections above screening levels  
Grey cells indicate no measurement was collected for that specific parameter

1 - Site-Specific Public Health Screening Levels for particulate matter are based on 24-hour time-weighted averages (TWAs). Fixed discrete monitoring readings are discrete readings, and so do not represent conditions over a full 24-hour period. Screening levels were modified on March 16, 2023 to reflect updated operation procedures on when to apply mitigation methods to reduce dust. Action levels set by health departments have not changed.

mg/m<sup>3</sup> - milligrams per cubic meter  
PM<sub>2.5</sub> - particles that are 2.5 micrometers and smaller  
PM<sub>10</sub> - particles that are 10 micrometers and smaller  
ppm - parts per million  
TWA - time-weighted average  
VOC - volatile organic compounds



- Legend**
- Roaming Air Monitoring Locations
  - ▲ Derailment Location
  - One Mile Radius

East Palestine Derailment ER Site  
 East Palestine, Columbiana County, OH 44413

**Figure 1**  
**Roaming Air Monitoring**  
**Community Locations**



Prepared For: EPA

Prepared By: Tetra Tech Inc.