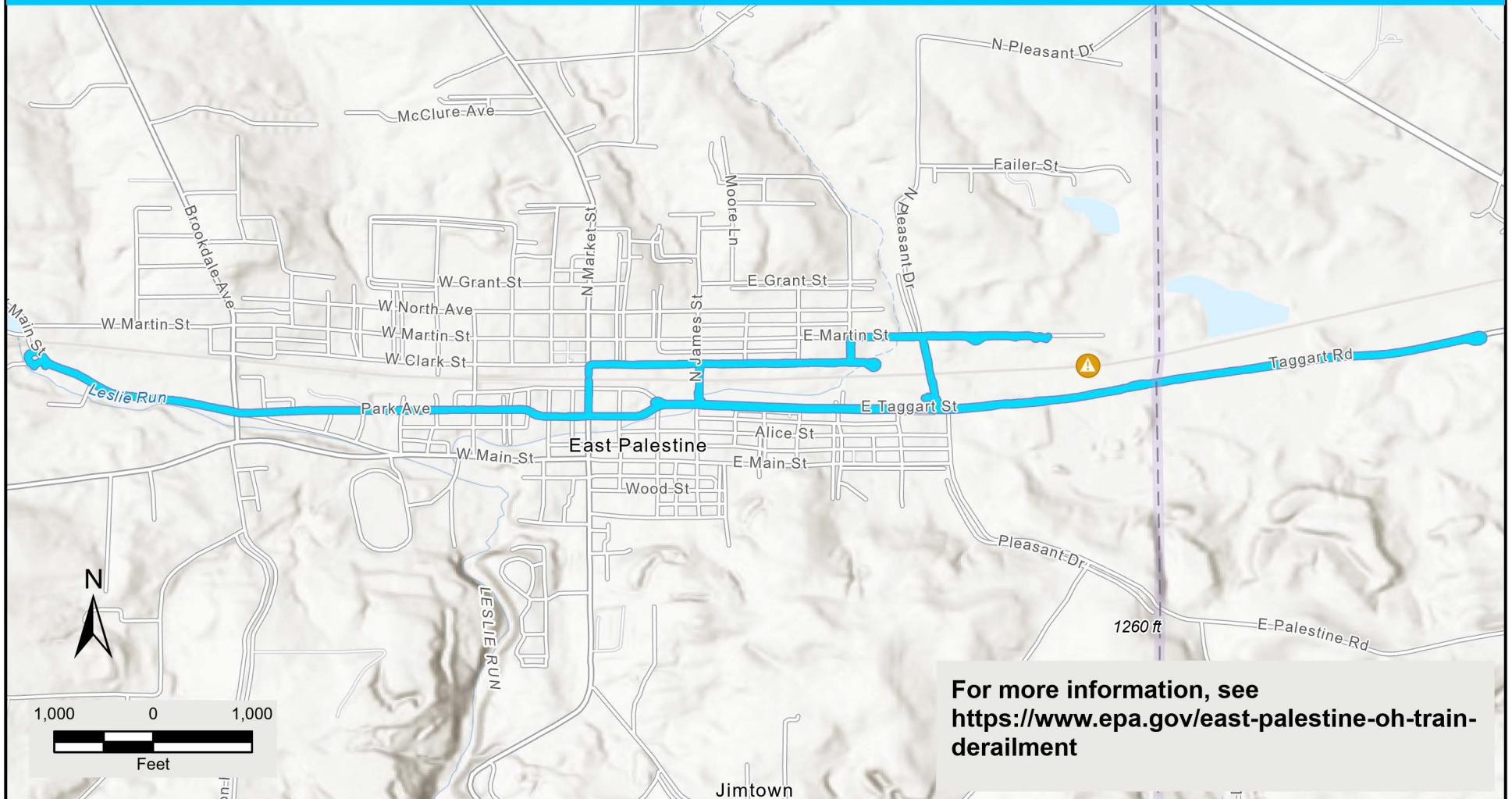


# East Palestine Train Derailment - TAGA Route Map -



For more information, see  
<https://www.epa.gov/east-palestine-oh-train-derailment>

**On April 24, 2023 EPA's Trace Atmospheric Gas Analyzer (TAGA) bus performed air monitoring around the East Palestine Derailment Location, monitoring for n-Butyl Acrylate.**

**Of the 32,300 real-time readings taken during the day, 100% of the readings were below site-specific mobile thresholds.**

-  Derailment Location
-  TAGA Route



Prepared For: U.S. EPA Prepared By: U.S. EPA GIS Unit