

# EPA's Climate Pollution Reduction Grants (CPRG):

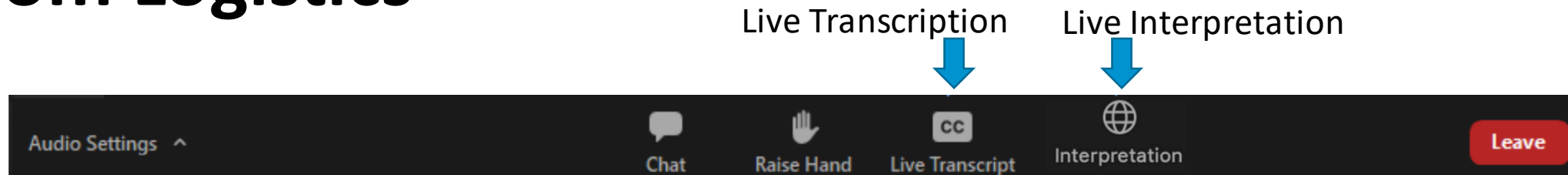
Engaging with Communities on CPRG Benefits

April 17, 2023 | 6 PM Eastern

Three audio options:

1. Listen via computer
  2. Use the "Call Me" feature
    - Dial +1 669 254 5252 or +1 669 216 1590 or +1 646 828 7666 or +1 551 285 1373
- Webinar ID: 160 701 3729

# Zoom Logistics



- **This session is being recorded.** A copy of the recording and presentation slides will be available online in the near future (<https://www.epa.gov/inflation-reduction-act/climate-pollution-reduction-grants>).
- **All attendees will be muted upon entry.** The moderator will call on individuals to share input and EPA staff will then unmute them.
- **Technical difficulties:** If you are having technical difficulties, please email [IRASTakeholders@epa.gov](mailto:IRASTakeholders@epa.gov).
- **Live transcription:** Automated live transcription is available by clicking the “Live Transcript” icon in your Zoom toolbar.
- **Live interpretation:** Live Spanish interpretation is available by clicking the “Interpretation” icon and selecting Spanish. – Note, to mute English audio when listening in Spanish, click “Mute Original Audio.”
- **Additional Feedback:** Submit written feedback to [IRASTakeholders@epa.gov](mailto:IRASTakeholders@epa.gov).

# Para acceder a la sesión en español

- Deberá descargar la aplicación “Zoom” y unirse al seminario web usando la aplicación (y no la versión en línea).
- Debe usar el audio de su computadora o su teléfono inteligente (no seleccione las opciones 'marcar' o 'llamarme' en su teléfono móvil).

## Instrucciones de la computadora

- En los controles de la reunión o el seminario web, haga clic en Interpretación
- Haga clic en español **Instrucciones para teléfonos inteligentes**

## Instrucciones para teléfonos inteligentes

- In your meeting controls, **tap the ellipses icon (...)** *En los controles de la reunion, toque (...)*
- Tap **Language Interpretation**. Click **Spanish** option *Toque Interpretación de idiomas*
- (Optional) Tap the toggle to **Mute Original Audio** *(Opcional) Toque el botón de alternancia silenciar audio original*
- Click **Done** *Haga clic en Finalizado*

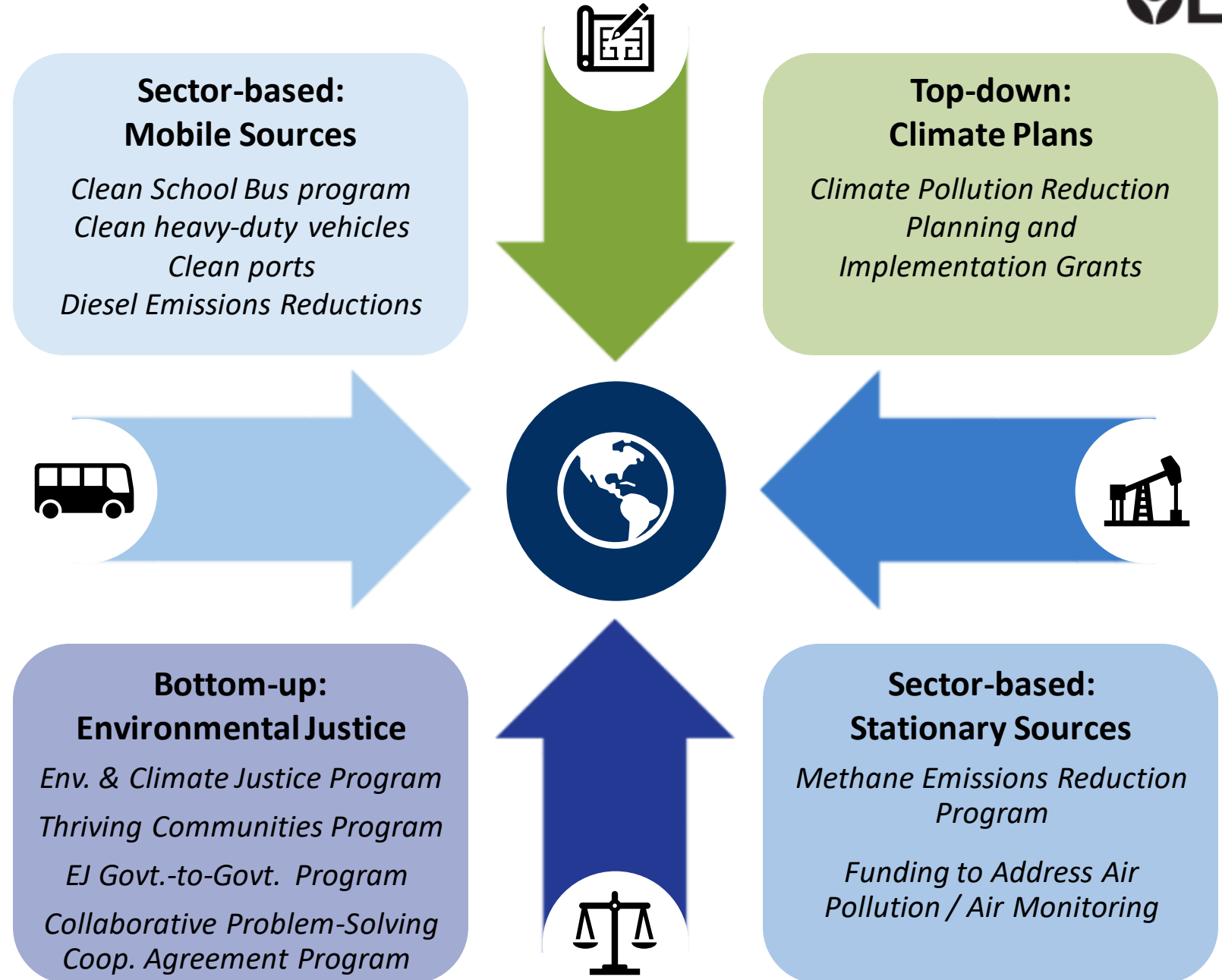
# Climate Pollution Reduction Grant Program

**1. Planning grants** to develop strong climate pollution reduction strategies (\$250 million)

- Administered through cooperative agreements to states, territories, Tribes, air pollution control agencies, and local governments

**2. Competitive implementation grants** to help put plans into action (\$4.6 billion)

# Tackling Climate and Air Pollution from Multiple Angles

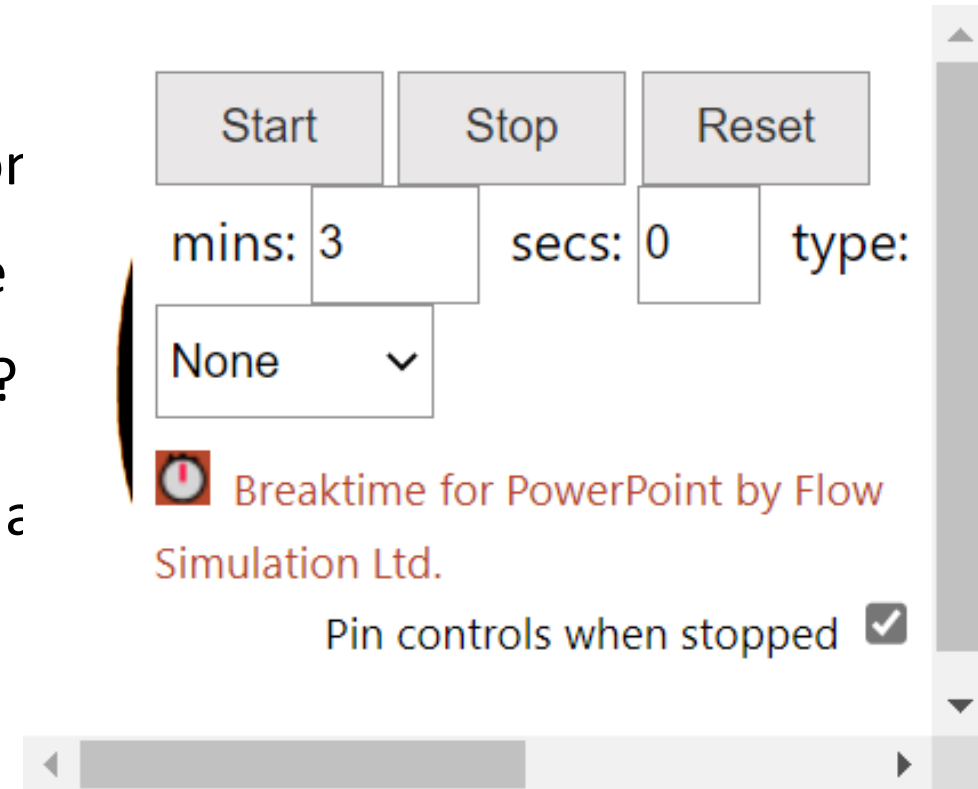


# Instructions/Norms

- The moderator will call on individuals, who will then be unmuted.
- Please...
  - Keep remarks under 3 minutes
  - Let us know which question you will be answering or if you will be answering more than one
  - Speak slowly for the interpreters,
  - Always be respectful, and
  - Use I statements.

# Questions Overview

1. What specific greenhouse gas (GHG) emissions reduction measures (programs, policies, projects, or actions) that could be implemented through the CPRG would achieve the most **significant benefits to low-income and disadvantaged communities (LIDAC)**? At the state level? At the municipal level? Within tribes?
2. What are the most important additional **outcomes** that a program like CPRG could bring to you and your community?
3. What should EPA consider in the design of the program criteria to support **meaningful engagement** with communities?
4. What are the best strategies for states/locals/tribes to conduct meaningful engagement?



# Thank you

## Additional Resources:

- [FAQ](#)
- [Optional Workplan and Reporting Tool](#)





## Question 1

What specific GHG emissions reduction measures (programs, policies, projects, or actions) that could be implemented through the CPRG would achieve the most **significant benefits to LIDACs**? At the state level? At the municipal level? Within tribes?

## Question 2

What are the most important additional **outcomes** that a program like CPRG could bring to you and your community?

## Question 3

What should EPA consider in the design of the program criteria to support **meaningful engagement** with communities?

## Question 4

What are the best strategies for states/locals/tribes to conduct meaningful engagement?