

Table 1
Community Continuous Air Monitoring Results
East Palestine Derailment Site
East Palestine, Columbiana County, Ohio

Monitoring Period: 05/05/2023 00:00 through 05/06/2023 11:38

| Air Monitoring Instrument: Serial Number | Analyte | Screening Level ¹ | Screening Level Exceeded? | 8-hour Period Concentration Range | Average of All 8-hour Periods |
|--|--|------------------------------|---------------------------|-----------------------------------|-------------------------------|
| 8533230504 | PM _{2.5} (mg/m ³) | 0.035 (mg/m ³) | No | 0.003 to 0.030 | 0.015 |
| | PM ₁₀ (mg/m ³) | 0.070 (mg/m ³) | No | 0.004 to 0.032 | 0.016 |
| 8533230702 | PM _{2.5} (mg/m ³) | 0.035 (mg/m ³) | No | 0.002 to 0.011 | 0.005 |
| | PM ₁₀ (mg/m ³) | 0.070 (mg/m ³) | No | 0.002 to 0.011 | 0.005 |
| W01A00002175 | VOC (ppm) | 0.5 (ppm) | No | 0.00 to 0.00 | 0.00 |
| W01A00002181 | VOC (ppm) | 0.5 (ppm) | No | 0.00 to 0.04 | 0.01 |
| W01A00002182 | VOC (ppm) | 0.5 (ppm) | No | 0.00 to 0.00 | 0.00 |
| W01B00002162 | VOC (ppm) | 0.5 (ppm) | No | 0.00 to 0.01 | 0.00 |
| W01B00002164 | VOC (ppm) | 0.5 (ppm) | No | 0.00 to 0.00 | 0.00 |
| W01B00002170 | VOC (ppm) | 0.5 (ppm) | No | 0.00 to 0.08 | 0.03 |
| W01B00002172 | VOC (ppm) | 0.5 (ppm) | No | 0.00 to 0.00 | 0.00 |
| W01B00002181 | VOC (ppm) | 0.5 (ppm) | No | 0.00 to 0.00 | 0.00 |
| W01B00002183 | VOC (ppm) | 0.5 (ppm) | No | 0.00 to 0.00 | 0.00 |
| W01B00002206 | VOC (ppm) | 0.5 (ppm) | No | 0.00 to 0.20 | 0.05 |
| W01B00002208 | VOC (ppm) | 0.5 (ppm) | No | 0.00 to 0.00 | 0.00 |
| W01B00002209 | VOC (ppm) | 0.5 (ppm) | No | 0.00 to 0.06 | 0.03 |
| W01B00002220 | VOC (ppm) | 0.5 (ppm) | No | 0.00 to 0.09 | 0.00 |
| W01B00002221 | VOC (ppm) | 0.5 (ppm) | No | 0.00 to 0.00 | 0.00 |
| W01B00002222 | VOC (ppm) | 0.5 (ppm) | No | 0.00 to 0.00 | 0.00 |
| W01B00002223 | VOC (ppm) | 0.5 (ppm) | No | 0.00 to 0.00 | 0.00 |

Notes:

¹ Site-Specific Screening Levels stated in the Tetra Tech Quality Assurance Project Plan. Screening levels were modified on March 16, 2023 to reflect updated operation procedures on when to apply mitigation methods to reduce dust. Action levels set by health departments have not changed.

Air monitoring measurements have been averaged over a 8-hour time period and summarized above.

Air monitoring is not performed during inclement weather conditions/rain and thunderstorms.

Abbreviations:

mg/m³ - milligrams per meter cubed

PM_{2.5} - Particulate Matter, diameter 2.5 micrometers and smaller

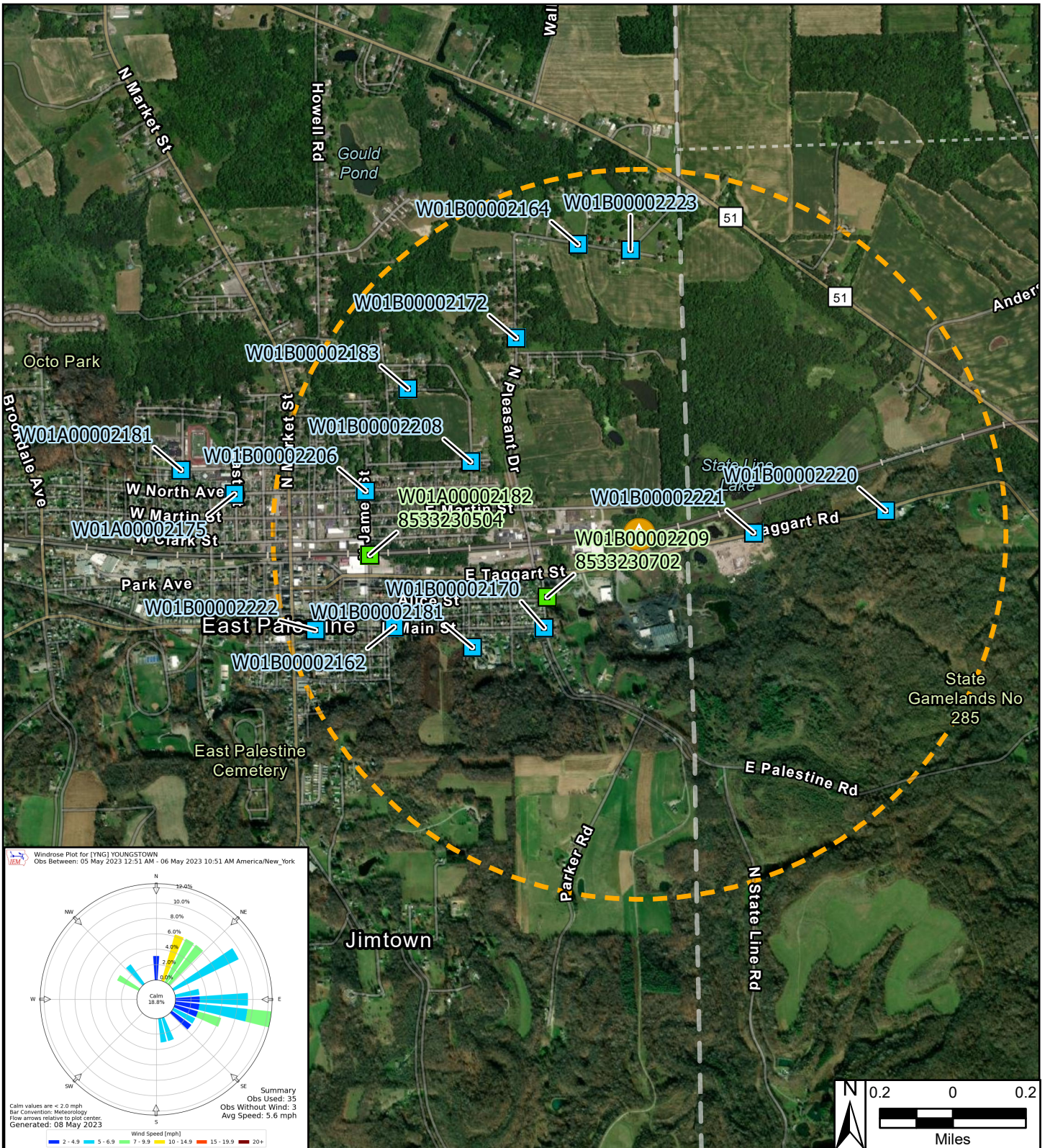
PM₁₀ - Particulate Matter, diameter 10 micrometers and smaller

ppm - Parts per million

S/N - Serial number

VOC - Volatile organic compound

We are in the process of ensuring this document is accessible to all audiences. If you need assistance accessing this document, or any materials on the EPA East Palestine, Ohio emergency response webpages, please contact the Region 5 Public Information Officer on-call r5_eastpalestine@epa.gov



- Legend**
- Continuous Air Monitoring Locations with DustTrak
 - Continuous Air Monitoring Locations
 - One Mile Radius
 - Derailment Location

East Palestine Derailment ER Site
 East Palestine, Columbiana County, OH 44413

Figure 1
Continuous Air Monitoring Community Stations

Prepared For: EPA | Prepared By: Tetra Tech Inc.