

Track Excavation & Impacted Areas

Tricia A. Edwards – USEPA
Current – Operations Section Chief



Acronyms

- OEPA – Ohio Environmental Protection Agency
- USEPA – United States Environmental Protection Agency
- NS – Norfolk Southern
- PHILIS – Portable High-throughput Integrated Laboratory System
- TAGA – Trace Atmospheric Gas Analyzer
- PTR-MS – Proton Transfer Reaction – Mass Spectrometry
- IC – Incident Commander

Main Line Interim Soil Removal Plan

Soil Sampling

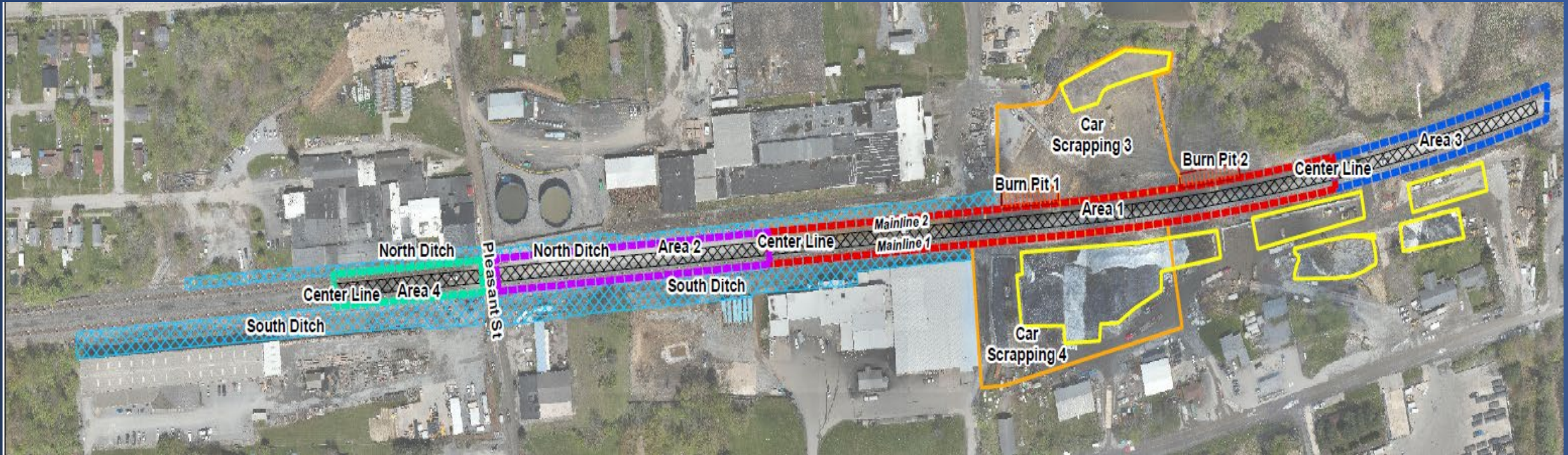
- Norfolk Southern
- USEPA
- OEPA

- Norfolk Southern
 - Contractors
- USEPA
 - Contractors

Track Excavation & Impacted Areas

- Main Line #1 – South Track
- Main Line #2 – North Track
- Centerline
- Burn Pits
- North Ditch
- South Ditch
- Car Scraping Areas

*Pre-Established Grids by location



Excavation & Sampling Approach

- Removal of Ballast
- Removal of ~12" of Glacial Till
- Visual inspection
- Screening of Material
- Additional Excavation, as needed
- Sampling (0-2", 12-14", 24-26")
- Analysis (PHILIS, Laboratory)
- Evaluation of Data (Norfolk Southern, OEPA, USEPA)
- Additional Excavation & Re-Sampling
- Incident Command (IC) Approval
- Backfill







Air Monitoring & Control Measures

- SUMMA
- MultiRAE
- TAGA / PTR

- Covering of Piles
- Butyl Buster
- Fans
- Equipment Washing
- By-Pass System





WASTE STAGING AREAS





OOCL

UAS

FRITTO

tex

U.S.

40

125-T

TX







Questions?

