

Table 1
Community Roving Air Monitoring Results Summary Table
East Palestine Derailment Emergency Response
East Palestine, Ohio
Monitoring Period: 04/26/2023 07:57 to 04/26/2023 16:53

Location	Date/Time	VOC (ppm)	PM _{2.5} (mg/m ³) ¹	PM ₁₀ (mg/m ³) ¹
		Screening Levels		
		0.5 ppm	0.035 mg/m ³	0.070 mg/m ³
PCR-N-03	4/26/2023 7:57	0	0.032	0.036
	4/26/2023 10:27	0	0.033	0.035
	4/26/2023 12:58	0	0.03	0.034
	4/26/2023 15:29	0	0.024	0.028
PCR-N-04	4/26/2023 8:37	0	0.033	0.039
	4/26/2023 11:03	0	0.047	0.075
	4/26/2023 13:34	0	0.036	0.051
	4/26/2023 16:05	0	0.028	0.039
PCR-N-05	4/26/2023 8:43	0	0.035	0.038
	4/26/2023 11:10	0	0.034	0.035
	4/26/2023 13:42	0	0.033	0.034
	4/26/2023 16:10	0	0.021	0.024
PCR-N-06	4/26/2023 8:26	0	0.03	0.033
	4/26/2023 10:55	0	0.031	0.032
	4/26/2023 13:24	0	0.032	0.035
	4/26/2023 15:57	0	0.02	0.021
PCR-N-07	4/26/2023 8:03	0	0.03	0.032
	4/26/2023 10:31	0	0.031	0.033
	4/26/2023 13:02	0	0.028	0.03
	4/26/2023 15:33	0	0.025	0.029
PCR-N-08	4/26/2023 8:07	0	0.03	0.034
	4/26/2023 10:35	0	0.032	0.034
	4/26/2023 13:06	0	0.03	0.034
	4/26/2023 15:37	0	0.024	0.026
PCR-N-09	4/26/2023 8:13	0	0.03	0.033
	4/26/2023 10:41	0	0.031	0.032
	4/26/2023 13:13	0	0.028	0.031
	4/26/2023 15:43	0	0.02	0.022
PCR-N-10	4/26/2023 8:19	0	0.031	0.035
	4/26/2023 10:45	0	0.03	0.034
	4/26/2023 13:19	0		0.035
	4/26/2023 15:52	0	0.02	0.021

We are in the process of ensuring this document is accessible to all audiences. If you need assistance accessing this document, or any materials on the EPA East Palestine, Ohio emergency response webpages, please contact the Region 5 Public Information Officer on-call r5_eastpalestine@epa.gov

Table 1
Community Roving Air Monitoring Results Summary Table
East Palestine Derailment Emergency Response
East Palestine, Ohio
Monitoring Period: 04/26/2023 07:57 to 04/26/2023 16:53

Location	Date/Time	VOC (ppm)	PM _{2.5} (mg/m ³) ¹	PM ₁₀ (mg/m ³) ¹
		Screening Levels		
		0.5 ppm	0.035 mg/m ³	0.070 mg/m ³
PCR-N-11	4/26/2023 8:49	0	0.036	0.046
	4/26/2023 11:16	0	0.031	0.035
	4/26/2023 13:48	0	0.03	0.033
	4/26/2023 16:15	0	0.025	0.041
PCR-N-12	4/26/2023 8:56	0	0.031	0.035
	4/26/2023 11:24	0	0.028	0.032
	4/26/2023 13:55	0	0.031	0.035
	4/26/2023 16:21	0	0.018	0.021
PCR-N-13	4/26/2023 8:31	0	0.041	0.056
	4/26/2023 10:59	0	0.031	0.035
	4/26/2023 13:30	0	0.035	0.043
	4/26/2023 16:01	0	0.02	0.023
PCR-S-01	4/26/2023 10:05	0	0.034	0.037
	4/26/2023 12:22	0	0.035	0.042
	4/26/2023 14:53	0	0.035	0.037
PCR-S-04	4/26/2023 9:59	0	0.034	0.037
	4/26/2023 12:16	0	0.03	0.032
	4/26/2023 14:47	0	0.031	0.033
PCR-S-05	4/26/2023 9:49	0	0.036	0.039
	4/26/2023 12:08	0	0.032	0.034
	4/26/2023 14:39	0	0.032	0.035
PCR-S-06	4/26/2023 9:40	0	0.034	0.041
	4/26/2023 12:01	0	0.03	0.034
	4/26/2023 14:31	0	0.031	0.034
	4/26/2023 16:53	0	0.017	0.02
PCR-S-07	4/26/2023 9:36	0	0.034	0.036
	4/26/2023 11:55	0	0.034	0.039
	4/26/2023 14:26	0	0.033	0.038
	4/26/2023 16:48	0	0.026	0.045
PCR-S-08	4/26/2023 9:11	0	0.037	0.046
	4/26/2023 11:33	0	0.036	0.041
	4/26/2023 14:04	0	0.036	0.042
	4/26/2023 16:31	0	0.023	0.032
PCR-S-09	4/26/2023 9:54	0	0.039	0.041
	4/26/2023 12:12	0	0.035	0.041
	4/26/2023 14:43	0	0.03	0.033

Table 1
 Community Roving Air Monitoring Results Summary Table
 East Palestine Derailment Emergency Response
 East Palestine, Ohio
 Monitoring Period: 04/26/2023 07:57 to 04/26/2023 16:53

Location	Date/Time	VOC (ppm)	PM _{2.5} (mg/m ³) ¹	PM ₁₀ (mg/m ³) ¹
		Screening Levels		
		0.5 ppm	0.035 mg/m ³	0.070 mg/m ³
PCR-S-10	4/26/2023 10:12	0	0.033	0.035
	4/26/2023 12:54	0	0.028	0.03
	4/26/2023 15:24	0	0.022	0.025
PCR-S-14	4/26/2023 9:19	0	0.032	0.038
	4/26/2023 11:42	0	0.033	0.042
	4/26/2023 14:11	0	0.035	
	4/26/2023 16:37	0	0.018	0.024
PCR-S-15	4/26/2023 9:25	0	0.03	0.034
	4/26/2023 11:46	0	0.029	0.03
	4/26/2023 14:17	0	0.031	0.033
	4/26/2023 16:40	0	0.017	0.019
PCR-S-16	4/26/2023 9:31	0	0.034	0.037
	4/26/2023 11:49	0	0.033	0.038
	4/26/2023 14:21	0	0.034	0.041
	4/26/2023 16:44	0	0.018	0.021

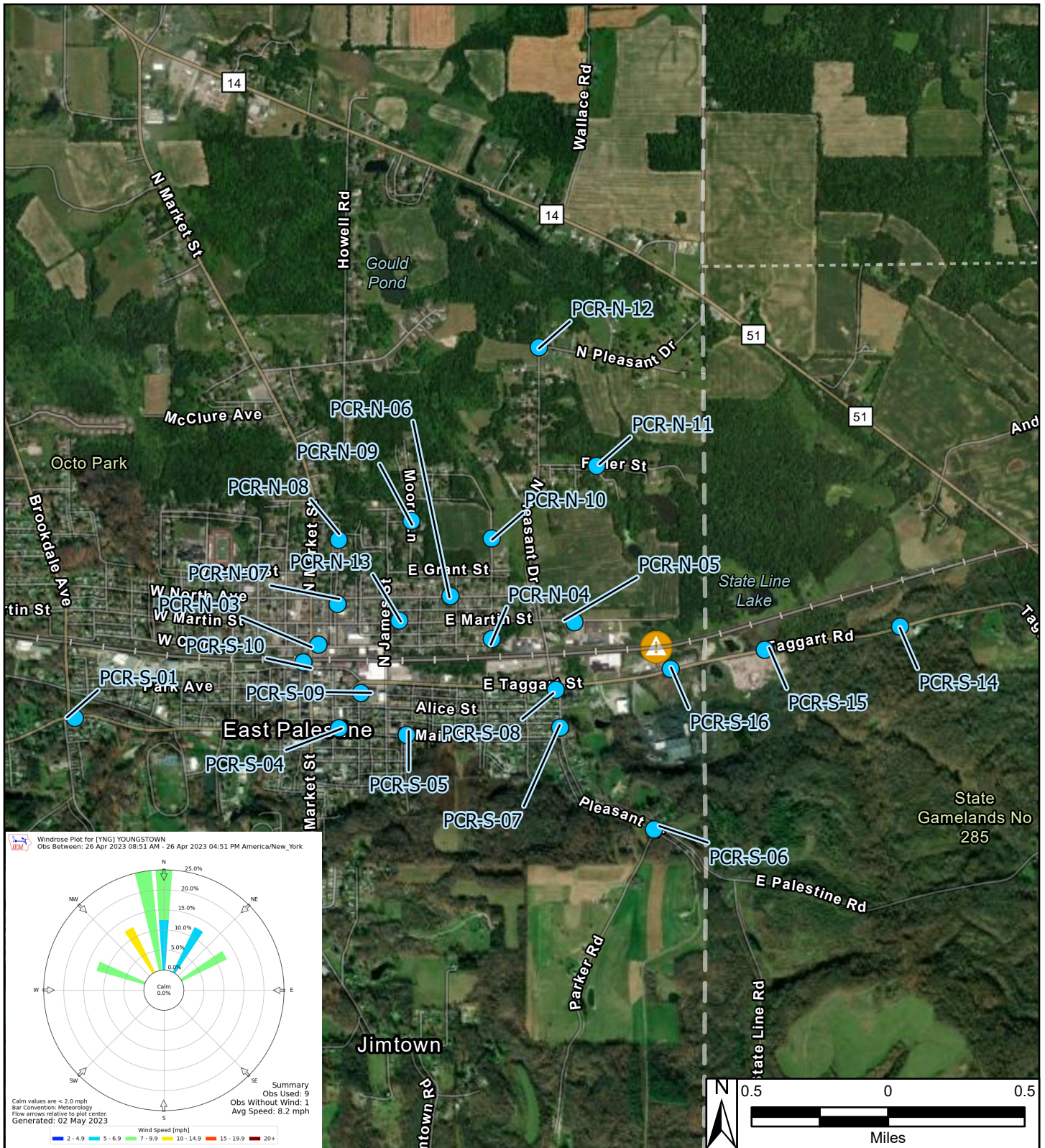
Table 1
Community Roving Air Monitoring Results Summary Table
East Palestine Derailment Emergency Response
East Palestine, Ohio
Monitoring Period: 04/26/2023 07:57 to 04/26/2023 16:53

Notes:

Highlighted indicate detections above screening levels
Grey cells indicate no measurement was collected for that specific parameter

1 - Site-Specific Public Health Screening Levels for particulate matter are based on 24-hour time-weighted averages (TWAs). Fixed discrete monitoring readings are discrete readings, and so do not represent conditions over a full 24-hour period. Screening levels were modified on March 16, 2023 to reflect updated operation procedures on when to apply mitigation methods to reduce dust. Action levels set by health departments have not changed.

mg/m³ - milligrams per cubic meter
PM_{2.5} - particles that are 2.5 micrometers and smaller
PM₁₀ - particles that are 10 micrometers and smaller
ppm - parts per million
TWA - time-weighted average
VOC - volatile organic compounds



Reference Map



Legend

- Roaming Air Monitoring Locations
- ▲ Derailment Location
- One Mile Radius

East Palestine Derailment ER Site
 East Palestine, Columbiana County, OH 44413

Figure 1
Roaming Air Monitoring
Community Locations



Prepared For: EPA

Prepared By: Tetra Tech Inc.