

Table 1
Community Roving Air Monitoring Results Summary Table
East Palestine Derailment Emergency Response
East Palestine, Ohio
Monitoring Period: 05/13/2023 08:04 to 05/13/2023 16:49

Location	Date/Time	VOC (ppm)	PM _{2.5} (mg/m ³) ¹	PM ₁₀ (mg/m ³) ¹
		Screening Levels		
		0.5 ppm	0.035 mg/m ³	0.070 mg/m ³
PCR-N-03	5/13/2023 8:17	0	0.043	0.05
PCR-N-03	5/13/2023 8:20	0	0.043	0.05
PCR-N-03	5/13/2023 11:19	0	0.038	0.041
PCR-N-03	5/13/2023 14:37	0	0.026	0.029
PCR-N-04	5/13/2023 9:11	0	0.053	0.068
PCR-N-04	5/13/2023 12:12	0	0.035	0.039
PCR-N-04	5/13/2023 15:12	0	0.022	0.025
PCR-N-05	5/13/2023 9:25	0	0.044	0.052
PCR-N-05	5/13/2023 12:19	0	0.032	0.035
PCR-N-05	5/13/2023 12:27	0	0.03	0.037
PCR-N-05	5/13/2023 15:24	0	0.02	0.024
PCR-N-06	5/13/2023 8:56	0	0.044	0.052
PCR-N-06	5/13/2023 11:49	0	0.037	0.04
PCR-N-06	5/13/2023 15:05	0	0.022	0.024
PCR-N-07	5/13/2023 8:29	0	0.044	0.053
PCR-N-07	5/13/2023 11:23	0	0.037	0.042
PCR-N-07	5/13/2023 14:41	0	0.025	0.029
PCR-N-08	5/13/2023 8:35	0	0.042	0.049
PCR-N-08	5/13/2023 11:27	0	0.037	0.04
PCR-N-08	5/13/2023 14:47	0	0.024	0.026
PCR-N-09	5/13/2023 8:42	0	0.036	0.04
PCR-N-09	5/13/2023 11:33	0	0.038	0.041
PCR-N-09	5/13/2023 14:54	0	0.023	0.026
PCR-N-10	5/13/2023 8:04	0	0.043	0.05
PCR-N-10	5/13/2023 8:50	0	0.036	0.045
PCR-N-10	5/13/2023 11:39	0	0.037	0.04
PCR-N-10	5/13/2023 15:01	0	0.021	0.024
PCR-N-11	5/13/2023 9:31	0	0.049	0.056
PCR-N-11	5/13/2023 15:31	0	0.027	0.03
PCR-N-12	5/13/2023 9:40	0.0209	0.046	0.052
PCR-N-12	5/13/2023 12:33	0	0.032	0.037
PCR-N-12	5/13/2023 15:36	0	0.022	0.026
PCR-N-13	5/13/2023 9:03	0	0.043	0.052
PCR-N-13	5/13/2023 12:05	0	0.038	0.042
PCR-N-13	5/13/2023 15:09	0	0.021	0.024
PCR-S-01	5/13/2023 10:57	0	0.04	0.045
PCR-S-01	5/13/2023 14:25	0	0.026	0.029
PCR-S-01	5/13/2023 16:49	0	0.021	0.029
PCR-S-04	5/13/2023 10:41	0	0.043	0.046
PCR-S-04	5/13/2023 14:18	0	0.026	0.028
PCR-S-04	5/13/2023 16:43	0	0.018	0.02
PCR-S-05	5/13/2023 10:29	0	0.04	0.049
PCR-S-05	5/13/2023 14:08	0	0.025	0.029
PCR-S-05	5/13/2023 16:34	0	0.019	0.024
PCR-S-06	5/13/2023 10:23	0	0.043	0.043
PCR-S-06	5/13/2023 14:00	0	0.025	0.029
PCR-S-06	5/13/2023 16:25	0	0.016	0.02
PCR-S-07	5/13/2023 10:17	0	0.04	0.046
PCR-S-07	5/13/2023 13:56	0	0.025	0.029
PCR-S-07	5/13/2023 16:17	0	0.017	0.021
PCR-S-08	5/13/2023 9:51	0	0.039	0.039
PCR-S-08	5/13/2023 12:44	0	0.032	0.036
PCR-S-08	5/13/2023 12:52	0	0.029	0.032
PCR-S-08	5/13/2023 15:45	0	0.019	0.023
PCR-S-09	5/13/2023 10:36	0	0.036	0.039
PCR-S-09	5/13/2023 14:15	0	0.025	0.028
PCR-S-09	5/13/2023 16:39	0	0.018	0.022
PCR-S-10	5/13/2023 11:14	0	0.039	0.044
PCR-S-10	5/13/2023 14:33	0	0.027	0.029

We are in the process of ensuring this document is accessible to all audiences. If you need assistance accessing this document, or any materials on the EPA East Palestine, Ohio emergency response webpages, please contact the Region 5 Public Information Officer on-call r5_eastpalestine@epa.gov

Table 1
 Community Roving Air Monitoring Results Summary Table
 East Palestine Derailment Emergency Response
 East Palestine, Ohio
 Monitoring Period: 05/13/2023 08:04 to 05/13/2023 16:49

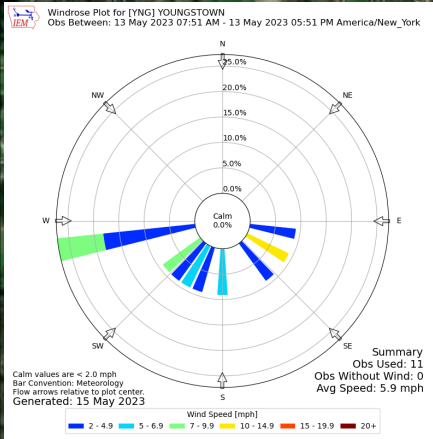
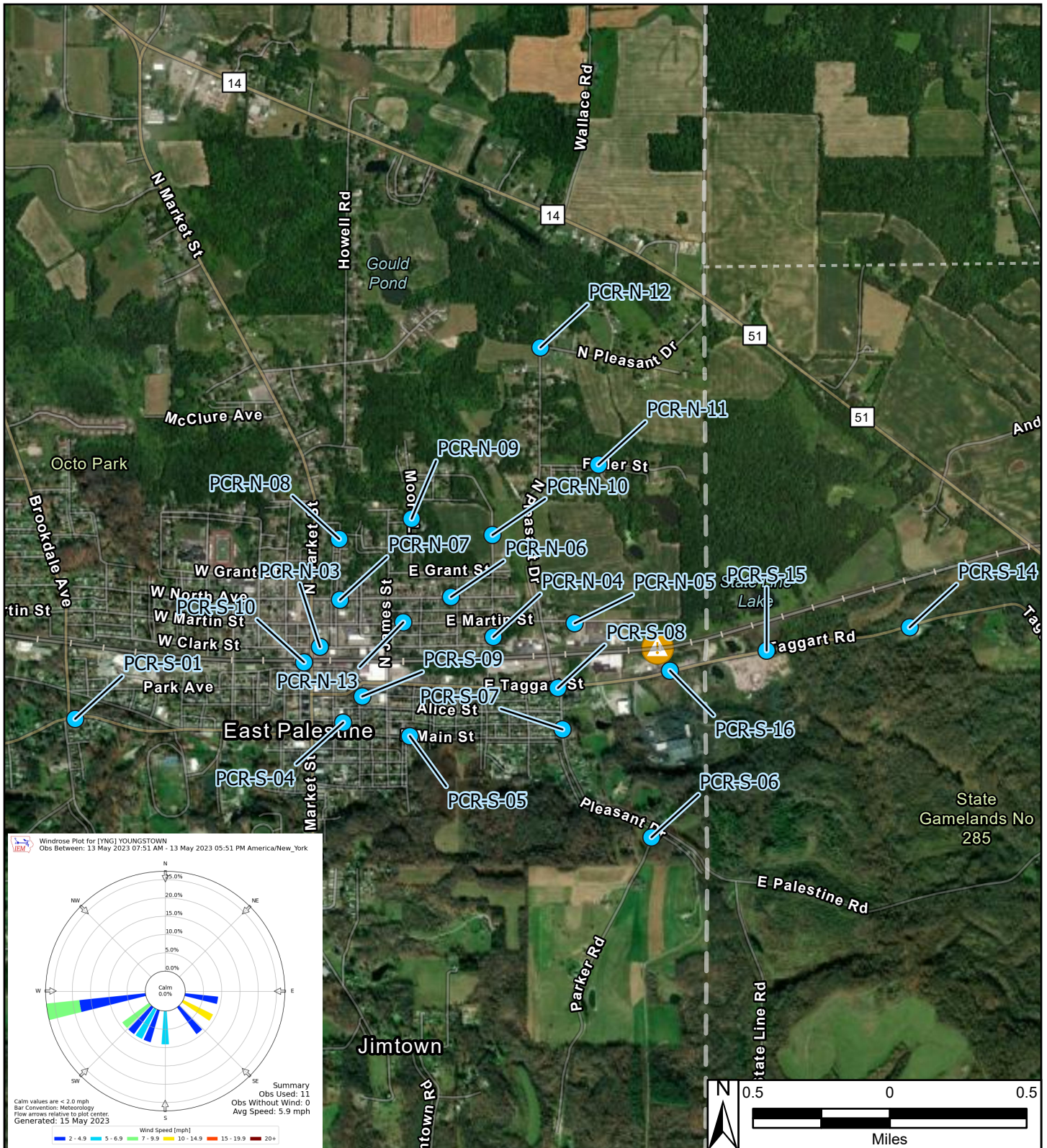
Location	Date/Time	VOC (ppm)	PM _{2.5} (mg/m ³) ¹	PM ₁₀ (mg/m ³) ¹
		Screening Levels		
		0.5 ppm	0.035 mg/m ³	0.070 mg/m ³
PCR-S-14	5/13/2023 10:00	0	0.037	0.041
PCR-S-14	5/13/2023 15:51	0	0.022	0.027
PCR-S-15	5/13/2023 10:05	0	0.048	0.06
PCR-S-15	5/13/2023 12:58	0	0.032	0.04
PCR-S-15	5/13/2023 15:55	0	0.019	0.022
PCR-S-16	5/13/2023 10:12	0	0.041	0.046
PCR-S-16	5/13/2023 13:02	0	0.032	0.037
PCR-S-16	5/13/2023 16:03		0.016	0.021

Notes:

- Highlighted indicate detections above screening levels
- Grey cells indicate no measurement was collected for that specific parameter

1 - Site-Specific Public Health Screening Levels for particulate matter are based on 24-hour time-weighted averages (TWAs). Fixed discrete monitoring readings are discrete readings, and so do not represent conditions over a full 24-hour period. Screening levels were modified on March 16, 2023 to reflect updated operation procedures on when to apply mitigation methods to reduce dust. Action levels set by health departments have not changed.

- mg/m³ - milligrams per cubic meter
- PM_{2.5} - particles that are 2.5 micrometers and smaller
- PM₁₀ - particles that are 10 micrometers and smaller
- ppm - parts per million
- TWA - time-weighted average
- VOC - volatile organic compounds



Legend

- Roaming Air Monitoring Locations
- ⚠ Derailment Location
- One Mile Radius

East Palestine Derailment ER Site
East Palestine, Columbiana County, OH 44413

Figure 1
Roaming Air Monitoring
Community Locations

TETRA TECH

Prepared For: EPA Prepared By: Tetra Tech Inc.