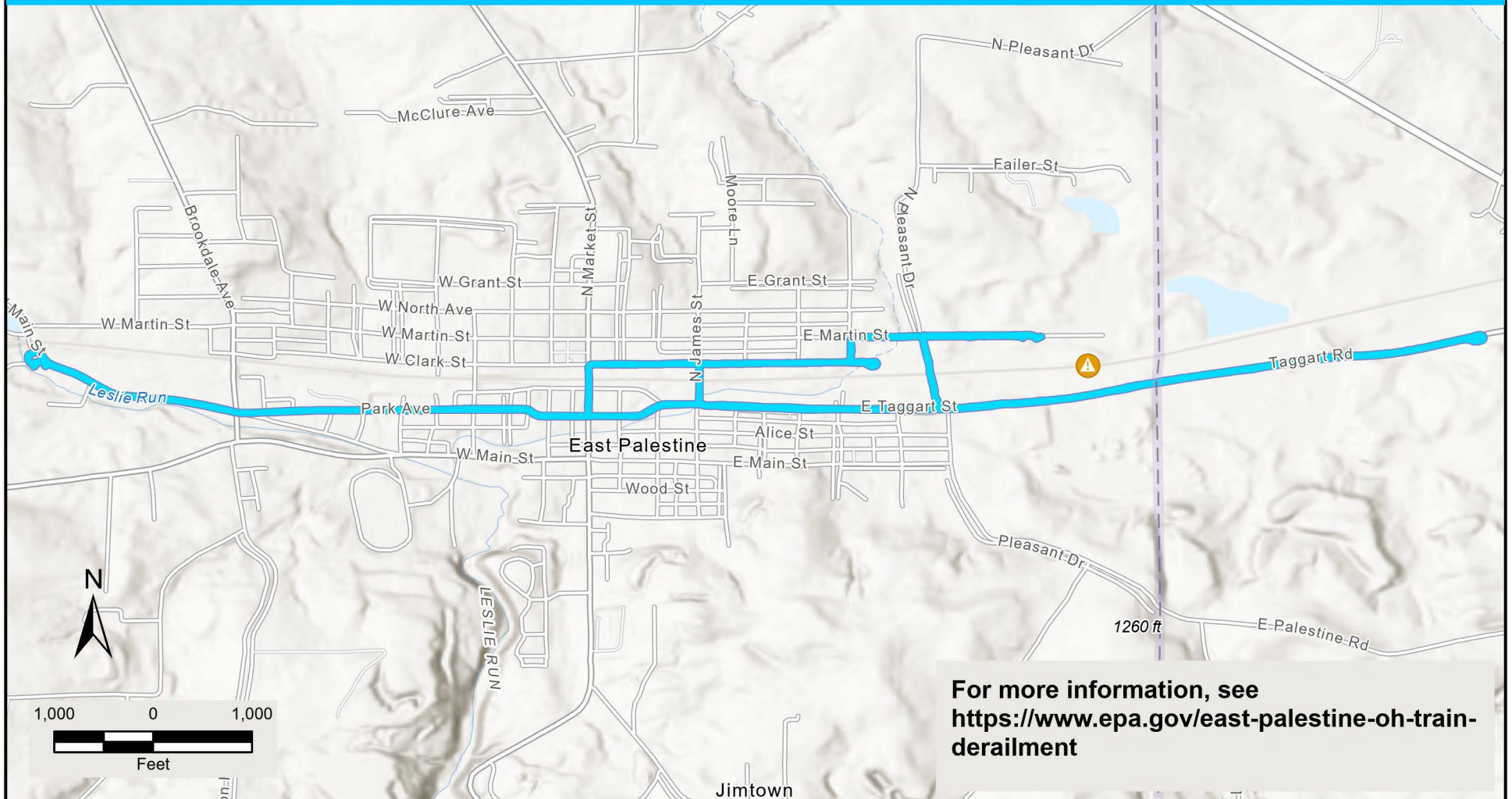


East Palestine Train Derailment - TAGA Route Map -



On May 9, 2023 EPA's Trace Atmospheric Gas Analyzer (TAGA) bus performed air monitoring around the East Palestine Derailment Location, monitoring for n-Butyl Acrylate.

Of the 31,021 real-time readings taken during the day, 100% of the readings were below site-specific mobile thresholds.

 Derailment Location



Prepared For: U.S. EPA Prepared By: U.S. EPA GIS Unit