

## 1/3 Cord Firewood Storage: 2"X4" Ends



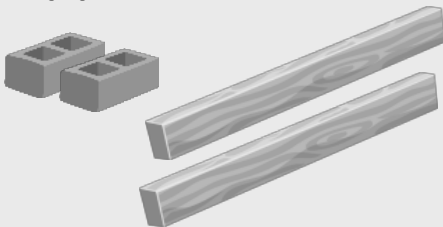
- Extendable to hold more wood
- Inexpensive materials
- Video instructions at:

[www.epa.gov/burnwise/videos](http://www.epa.gov/burnwise/videos)

### Base

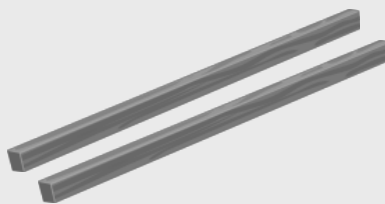
(2) 8-foot landscape timbers

(2) Cinder blocks



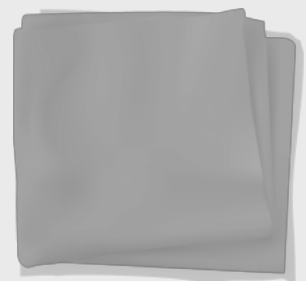
### Ends

(2) 2"x4"x10' treated lumber (to be cut in half)



### Roof

(1) 8'X10' tarp



**Tools: Gloves, Safety Glasses, Saw**

## Tips

- Slope roof to prevent water collection
- Use a large enough roof so the overhang protects wood from rain & snow
- Stack larger pieces of firewood at the base to increase stability
- Extend base using 2 additional landscape timbers + 1 cinder block